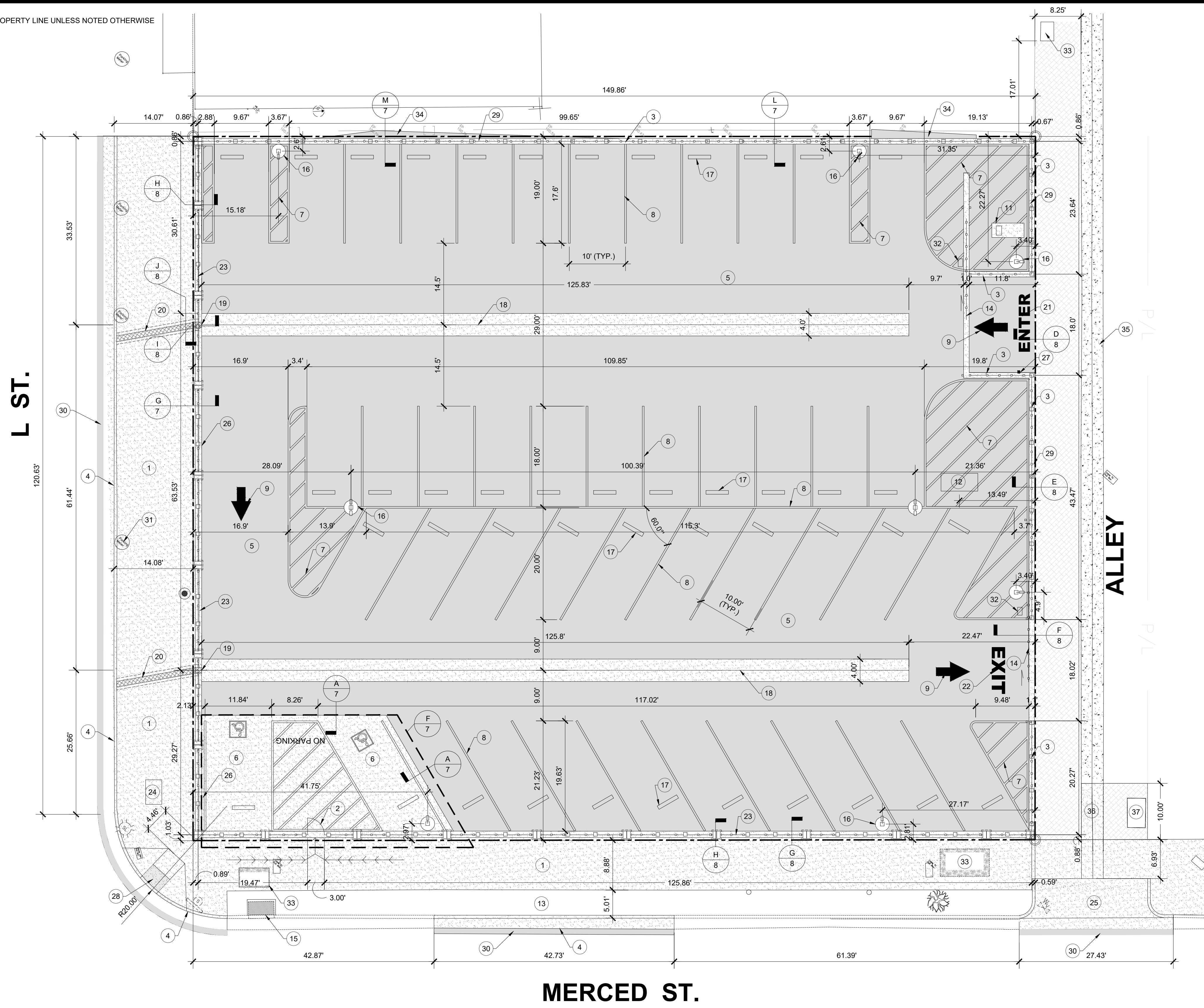


ALL DIMENSIONS ARE TO PROPERTY LINE UNLESS NOTED OTHERWISE



KEY NOTES

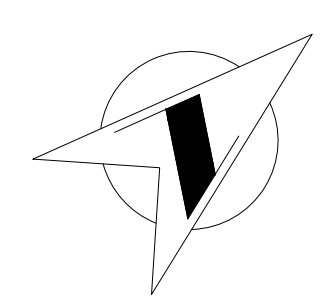
1. CONSTRUCT CONCRETE SIDEWALK PER CITY OF FRESNO STD. DETAIL P-5
2. CONSTRUCT 7' TALL PEDESTRIAN WROUGHT IRON GATE, SEE C/7
3. CONSTRUCT 7' TALL WROUGHT IRON FENCE PER DETAIL K/7
4. CONSTRUCT CONCRETE CURB AND GUTTER PER CITY OF FRESNO STD. DETAIL P-9
5. CONSTRUCT AC PAVEMENT PER DETAIL A/7
6. NEW ACCESSIBLE PARKING, 6" THICK CONCRETE BROOM FINISH W/ #4 REBAR @ 24" O.C. E.W. SEE DETAIL A/7
7. PAINT 4" WIDE WHITE DIAGONAL STRIPING @ 36" O.C. (TYP.)
8. PAINT 4" WIDE WHITE PARKING STALL STRIPING (TYP.)
9. PAINT DIRECTIONAL ARROW PER CALTRANS STD A24A, TYPE I.
10. NOT USED
11. NEW ELECTRICAL SERVICE METERED PEDESTAL - SEE ELECTRICAL DRAWINGS.
12. FURNISH AND INSTALL BIKE RACK - SEE DETAIL J/7
13. NEW LANDSCAPE AREA TO MATCH EXISTING
14. FURNISH AND INSTALL 18'-0" WIDE WROUGHT IRON SLIDING GATE AND APPURTENANCES - SEE DETAIL C/8
15. EXISTING TYPE "D" STORM DRAIN CURB INLET TO REMAIN
16. PROPOSED ELECTRICAL LIGHT POLE, PEDESTAL AND FIXTURE TYP. OF 8 (SEE ELECTRICAL PLAN)
17. FURNISH AND INSTALL WHEELSTOP PER DETAIL I/7 (TYP.)
18. CONSTRUCT CONCRETE VALLEY GUTTER- SEE DETAIL H/7
19. SIDEWALK DRAIN INLET PER CITY OF FRESNO STD. P-23
20. CONSTRUCT SIDEWALK DRAIN AS PER CITY OF FRESNO STD. P-23
21. "ENTER" LETTERING WITH SOLID WHITE PAINT. SEE DETAIL L/8
22. "EXIT" LETTERING WITH SOLID WHITE PAINT. SEE DETAIL L/8
23. 7' HIGH WROUGHT IRON FENCE WITH 16"x16"x7' HIGH PILASTERS SPACED @ 16' O.C. MAX. SEE DETAIL B/8
24. INSTALL UTILITY VAULT (SEE ELECTRICAL PLANS)
25. REMOVE AND CONSTRUCT NEW ALLEY APPROACH PER CITY OF FRESNO STD P-13
26. CONSTRUCT GRADE BEAM. SEE DETAIL G/7
27. NEW SLIDING GATE KEYPAD. SEE DETAIL K/8
28. NEW CONCRETE CURB RAMP PER CITY OF FRESNO STD. P-28 AND P-32
29. NEW 12" WIDE CONCRETE MOWSTRIP SEE DETAILS L/7, M/7, E/8 & F/8
30. INSTALL 12" WIDE X 7" THICK HMA OVER 95% COMPACTED SOIL
31. (3) EXISTING PARKING METERS TO BE REMOVED PRIOR TO CONSTRUCTION AND REINSTALLED. CALL CITY OF FRESNO PARKING SERVICES AT (559) 621-7275
32. GATE CONTROLLER ON CONCRETE PAD. SEE SPECIFICATIONS.
33. EXISTING PGE VAULT TO REMAIN
34. 2" AC OVER 95% CNS
35. EXISTING VALLEY GUTTER TO REMAIN
36. EXISTING 10' LENGTH OF VALLEY GUTTER TO BE REMOVED AND REPLACED
37. EXISTING UTILITY VAULT TO REMAIN

LEGEND

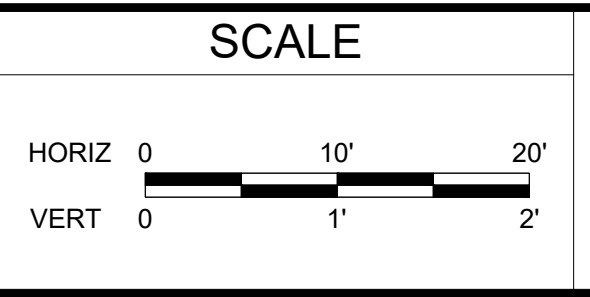
- NEW CONCRETE
- NEW PARKING LOT AC PAVEMENT
- NEW ALLEY PAVEMENT PER CITY OF FRESNO STD. DETAIL P-12
- PROPERTY LINE
- WROUGHT IRON FENCE
- ACCESSIBLE PATH OF TRAVEL (P.O.T.)
- PROPERTY CORNER

PARKING COUNT

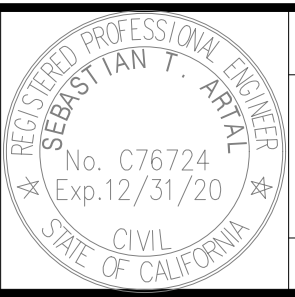
STANDARD STALLS	42
VAN ACCESSIBLE STALLS	2
TOTAL STALLS	44



DESIGNED: CZ	DATE: 5/28/19	RECORD DRAWING	DATE
DRAWN: CZ	5/28/19	RESIDENT ENGINEER	
CHECKED: SA	5/28/19		



SUPERVISING ENGINEER _____ DATE _____



PROJECT: FRESNO COUNTY ASSESSOR'S OFFICE
PARKING LOT IMPROVEMENTS



DEPARTMENT OF PUBLIC WORKS AND PLANNING
SITE PLAN
DRAWING NO. 11297 SHEET NO. 5 TOTAL 13

FOR RIGHT OF WAY DATA AND ACCURATE ACCESS DETERMINATION, SEE DOCUMENTS IN THE DEPARTMENT OF PUBLIC WORKS AND PLANNING.