

BEFORE THE BOARD OF SUPERVISORS  
OF THE COUNTY OF FRESNO  
STATE OF CALIFORNIA

IN THE MATTER OF ADOPTING AND )  
LEVYING THE SPECIAL TAX )  
FOR DEVELOPED PROPERTIES )  
WITHIN COMMUNITY FACILITIES ) RESOLUTION  
DISTRICT NO. 2006-01 (POLICE )  
PROTECTION SERVICES) COUNTY OF )  
FRESNO, INCLUDING ITS )  
ANNEXATION TERRITORIES, )  
FOR FISCAL YEAR 2017-18 )

WHEREAS, the Countywide Community Facilities District ("CFD") is comprised of the original CFD 2006-01 and its associated annexation territories nos. 1A, 2A, 1B, 3A, 7A, 8A and 8B (collectively, the "District")<sup>1</sup>.

WHEREAS, under County Ordinance No. 06-010 for the original Community Facilities District No. 2006-01, County Ordinance No. 06-014 for Annexation Territory No. 1A, County Ordinance No. 06-021 for Annexation Territory 2A, County Ordinance No. 07-046 for Annexation Territory No. 1B, County Ordinance No. 08-031 for Annexation Territory No. 3A, County Ordinance No. 12-014 for Annexation Territory No. 7A, County Ordinance No. 15-002 for Annexation Territory No. 8A, and County Ordinance No. 15-004 for Annexation Territory No. 8B, the Board of Supervisors (this "Board") of the County of Fresno, or its designee, is authorized by ordinance, resolution or by other action if permitted by applicable law to establish the specific amounts of the Special Tax to levy on each Developed Property, referred to below, within the District for each County fiscal year.

WHEREAS, as provided in the Special Tax Rate and Method of Apportionment of the District, which is Exhibit B of each of the forgoing County Ordinances, the CFD Administrator annually shall calculate the rates of the Special Tax based on the Special Tax Rate and Method of Apportionment of the District.

WHEREAS, the CFD Administrator duly calculated the specific maximum rates of the Special Tax, as set forth in Exhibit A to this resolution, pursuant to the Special Tax Rate and

<sup>1</sup> Each annexation territory is designated as "Annexation Territory No. [specify number, e.g., 1A, 2A, 1B, 3A, 7A, 8A or 8B respectively] of Community Facilities District No. 2006-01 (Police Protection Services) of

1 Method of Apportionment of the District, with respect to the District for County Fiscal Year 2017-  
2 18.

3 WHEREAS, that calculation by the CFD Administrator of the specific maximum rate of  
4 the Special Tax is shown in Exhibit D to this resolution and was based, in part, on the Annual  
5 Escalation Factor, as defined in the Special Tax Rate and Method of Apportionment of the  
6 District.

7 WHEREAS the CFD Administrator, in calculating the specific maximum of the Special  
8 Tax, determined that the Escalation Factor Adjustment, as defined in the Special Tax Rate and  
9 Method of Apportionment of the District, must be analyzed for the District for the County FY  
10 2017-18, as shown in Exhibit E.

11 WHEREAS the CFD Administrator determined that the Escalation Factor Adjustment is  
12 4.299 percent with respect to the District for County FY 2017-18, and therefore, the Annual  
13 Escalation Factor should be reduced by that Escalation Factor Adjustment for the District for  
14 County FY 2017-18.

15 WHEREAS the rates and amounts calculated by the CFD Administrator do not exceed  
16 any rates or amounts allowed pursuant to the Special Tax Rate and Method of Apportionment of  
17 the District.

18 WHEREAS the Annual Escalation Factor is not a new tax, but an inflationary adjustment  
19 established in the Special Tax Rate and Method of Apportionment of the District, which was  
20 approved by the qualified electors (i.e., qualified landowner voters) of the District, and therefore  
21 the County is not legally required under California Constitution, Articles XIIC or XIID, which are  
22 included in "Proposition 218," or under any other law, to obtain the approval from any of the  
23 qualified electors of the District with respect to any of the matters that are the subject of this  
24 resolution.

25 WHEREAS, the CFD Administrator duly determined that, as of May 1, 2017, three  
26 hundred two (302) Taxable Properties within the District were Developed Properties.

27  
28 the County of Fresno. For the ease of reference in this resolution, such annexation territories are referred  
to by their respective annexation territory numbers only (e.g., 1A, 2A, 1B, 3A, 7A, 8B or 8A respectively).

1 WHEREAS, accordingly, the CFD Administrator prepared a certified list of all parcels in  
2 the District that are subject to the Special Tax levy ("CFD Administrator's Certified List") as  
3 follows: (a) the CFD Administrator identified those three hundred two (302) Developed  
4 Properties within the District for County Fiscal Year 2017-18, pursuant to the Special Tax Rate  
5 and Method of Apportionment of the District; and (b) the specific amount(s) of the Special Tax,  
6 which are at the maximum rate(s), respectively, of the Special Tax, all of which is set forth in  
7 Exhibit B to this resolution.

8 WHEREAS, a boundary map of the District is shown in Exhibit C to this resolution.

9 WHEREAS, those three hundred two (302) Developed Properties within the District for  
10 County Fiscal Year 2017-18 are, under the Special Tax Rate and Method of Apportionment of  
11 the District, subject to the levy of the Special Tax of the District for County Fiscal Year 2017-18.

12 WHEREAS, all capitalized terms used in this resolution are defined in the Special Tax  
13 Rate and Method of Apportionment of the District, unless otherwise defined in this resolution.

14 NOW THEREFORE, BE IT RESOLVED, that all of the foregoing recitals are true and  
15 correct.

16 BE IT FURTHER RESOLVED that this Board hereby finds and determines that the CFD  
17 Administrator duly calculated the specific maximum rates of such Special Tax, as set forth in  
18 Exhibit A, pursuant to the Special Tax Rate and Method of Apportionment of the District, above,  
19 with respect to the District for Fiscal Year 2017-18.

20 BE IT FURTHER RESOLVED, that this Board hereby finds and determines that the  
21 rates and amounts calculated by the CFD Administrator do not exceed any rates or amounts  
22 allowed under the Special Tax Rate and Method of Apportionment of the District.

23 BE IT FURTHER RESOLVED, that this Board hereby finds and determines that the  
24 Annual Escalation Factor is not a new tax, but rather, an inflationary adjustment established in  
25 the Special Tax Rate and Method of Apportionment of the District, which was approved by the  
26 qualified electors (i.e., qualified landowner voters) of the District, and therefore the County is not  
27 legally required under California Constitution, Articles XIIC or XIID, which are included in  
28

1 "Proposition 218," or under any other law, to obtain the approval from any of the qualified  
2 electors of the District with respect to any of the matters that are the subject of this resolution.

3 BE IT FURTHER RESOLVED that this Board hereby determines, approves, authorizes,  
4 establishes, and adopts the maximum rates for the Special Tax, as set forth in Exhibit A, with  
5 respect to the District for Fiscal Year 2017-18.

6 BE IT FURTHER RESOLVED that this Board hereby finds and determines that the CFD  
7 Administrator duly determined the Developed Properties and the specific amounts of the Special  
8 Tax, as set forth in Exhibit B, under the Special Tax Rate and Method of Apportionment of the  
9 District, above, with respect to the District for Fiscal Year 2017-18.

10 BE IT FURTHER RESOLVED, that the specific amounts of the Special Tax to be levied  
11 on each Developed Property, shall be levied at the maximum rates of the Special Tax, as set  
12 forth in Exhibit A, as applicable for the land use class and description of property (as defined in  
13 the Special Tax Rate and Method of Apportionment of the District), within the District for County  
14 Fiscal Year 2017-18.

15 BE IT FURTHER RESOLVED, that this Board hereby accepts, approves, and adopts the  
16 CFD Administrator's Certified List stating that there are three hundred two (302) Developed  
17 Properties within the District, as set forth in Exhibit B, for County Fiscal Year 2017-18, and  
18 therefore, this Board does hereby levy the Special Tax in the specific amounts, as further set  
19 forth in Exhibit B, on all such Developed Properties within the District, as further set forth in  
20 Exhibit B, as applicable for land use class and description of property (as defined in the Special  
21 Tax Rate and Method of Apportionment of the District), for County Fiscal Year 2017-18.

22 BE IT FURTHER RESOLVED that the Clerk to this Board promptly shall file this  
23 resolution, or a certified copy, with the Auditor-Controller/Treasurer-Tax Collector, but not later  
24 than August 10, 2017 (unless the Auditor-Controller/Treasurer-Tax Collector gives her prior  
25 written consent to receive this resolution, or a certified copy, at a later date, in which case this  
26 resolution, or a certified copy, shall be promptly filed with the Auditor-Controller/Treasurer-Tax  
27 Collector not later than August 28, 2017).

28

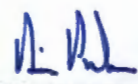
1  
2  
3  
4  
5  
6  
7  
8  
9  
10  
11  
12  
13  
14  
15  
16  
17  
18  
19  
20  
21  
22  
23  
24  
25  
26  
27  
28

BE IT FURTHER RESOLVED that the Clerk to this Board, the CFD Administrator, and the Auditor-Controller/Treasurer-Tax Collector each are individually authorized to take all necessary actions to carry out this resolution to the fullest intent provided in this resolution.

BE IT FURTHER RESOLVED, that this resolution shall take effect immediately upon its adoption by this Board.

THE FOREGOING was passed and adopted by the following vote of the Board of Supervisors of the County of Fresno this 11th day of July, 2017, to-wit:

AYES:  
NOES:  
ABSENT:



CHAIRMAN, Board of Supervisors

ATTEST:

BERNICE E. SEIDEL, Clerk  
Board of Supervisors

By Susan Bishop  
Deputy

APPROVED AS TO LEGAL FORM:  
DANIEL C. CEDERBORG, COUNTY COUNSEL

BY: [Signature] Deputy

APPROVED AS TO ACCOUNTING FORM:  
OSCAR J. GARCIA, C.P.A., AUDITOR-CONTROLLER/  
TREASURER-TAX COLLECTOR

BY: [Signature]

**Exhibit A**

**County Wide CFD No. 2006-01; Annexation 1A, Annexation 2A, Annexation 1B,  
Annexation 3A, Annexation 7A, Annexation 8A, and Annexation 8B  
Special Tax for  
FY 2016-17 Developed Property**

Land Use Class 1, Residential Property.....	\$691.27
Land Use Class 2, Multi-Family Property.....	\$519.99

**EXHIBIT B**  
**Countywide, CFD No. 2006-01**  
**(Including annexation territories 1A, 2A, 1B, 3A, 7A, 8A, 8B)**

**Certified List of All Parcels in the District Subject to Special Tax Levy**

I, Thomas Trester, Sheriff-Coroner's Administrative Services Director, am the duly appointed designee of the Sheriff-Coroner of the County of Fresno, the CFD Administrator for Community Facilities District No. 2006-01 (Police Protection Services) County of Fresno, including any annexation territories (collectively, the "District"), and hereby state and certify, as follows:

1. The boundary map of the District that is attached to this certificate is true and complete.
2. After carefully and diligently conducting a review of the County of Fresno's records concerning the District, making other inquiries and investigations as I reasonably deem appropriate, and receiving certain information certified from the Department of Public Works and Planning, I have determined that, as of May 1, 2017, the following parcels are Developed Properties of Land Use Class 1, Residential Property, and for that reason are subject to the levy of the Special Tax of the District for County Fiscal Year 2017-18, in the following specific amount(s):

<b>No.</b>	<b>Developed Property Parcel Number</b>	<b>CFD Title</b>	<b>Tract No.</b>	<b>Amount of Special Tax to be levied on each parcel for County Fiscal Year 2016-17</b>
1.	043-250-09S	Caruthers	5401	\$ 691.27
2.	043-250-10S	Caruthers	5401	\$ 691.27
3.	043-250-11S	Caruthers	5401	\$ 691.27
4.	043-250-13S	Caruthers	5401	\$ 691.27
5.	043-250-14S	Caruthers	5401	\$ 691.27
6.	043-250-17S	Caruthers	5401	\$ 691.27
7.	043-250-18S	Caruthers	5401	\$ 691.27
8.	043-250-19S	Caruthers	5401	\$ 691.27
9.	043-250-20S	Caruthers	5401	\$ 691.27
10.	043-250-22S	Caruthers	5401	\$ 691.27
11.	043-250-23S	Caruthers	5401	\$ 691.27
12.	043-250-24S	Caruthers	5401	\$ 691.27
13.	043-250-25S	Caruthers	5401	\$ 691.27
14.	043-250-27S	Caruthers	5401	\$ 691.27
15.	043-250-32S	Caruthers	5401	\$ 691.27
16.	043-250-33S	Caruthers	5401	\$ 691.27
17.	043-250-34S	Caruthers	5401	\$ 691.27
18.	043-250-36S	Caruthers	5401	\$ 691.27
19.	043-250-37S	Caruthers	5401	\$ 691.27
20.	043-250-38S	Caruthers	5401	\$ 691.27
21.	043-250-43S	Caruthers	5401	\$ 691.27
22.	043-250-52S	Caruthers	5401	\$ 691.27
23.	043-250-53S	Caruthers	5401	\$ 691.27
24.	043-250-56S	Caruthers	5401	\$ 691.27
25.	043-250-57S	Caruthers	5401	\$ 691.27
26.	043-250-62S	Caruthers	5401	\$ 691.27
27.	053-500-01S	Countryside Estates	5504	\$ 691.27

28.	053-500-02S	Countryside Estates	5504	\$	691.27
29.	053-500-03S	Countryside Estates	5504	\$	691.27
30.	053-500-04S	Countryside Estates	5504	\$	691.27
31.	053-500-05S	Countryside Estates	5504	\$	691.27
32.	053-500-06S	Countryside Estates	5504	\$	691.27
33.	053-500-07S	Countryside Estates	5504	\$	691.27
34.	053-500-08S	Countryside Estates	5504	\$	691.27
35.	053-500-09S	Countryside Estates	5504	\$	691.27
36.	053-500-10S	Countryside Estates	5504	\$	691.27
37.	053-500-11S	Countryside Estates	5504	\$	691.27
38.	053-500-12S	Countryside Estates	5504	\$	691.27
39.	053-500-13S	Countryside Estates	5504	\$	691.27
40.	053-500-16S	Countryside Estates	5504	\$	691.27
41.	053-500-19S	Countryside Estates	5504	\$	691.27
42.	053-500-20S	Countryside Estates	5504	\$	691.27
43.	053-500-21S	Countryside Estates	5504	\$	691.27
44.	053-500-22S	Countryside Estates	5504	\$	691.27
45.	053-500-25S	Countryside Estates	5504	\$	691.27
46.	053-500-29S	Countryside Estates	5504	\$	691.27
47.	053-500-30S	Countryside Estates	5504	\$	691.27
48.	053-500-31S	Countryside Estates	5504	\$	691.27
49.	053-500-32S	Countryside Estates	5504	\$	691.27
50.	053-500-33S	Countryside Estates	5504	\$	691.27
51.	053-500-34S	Countryside Estates	5504	\$	691.27
52.	053-500-35S	Countryside Estates	5504	\$	691.27
53.	053-500-36S	Countryside Estates	5504	\$	691.27
54.	053-500-37S	Countryside Estates	5504	\$	691.27
55.	053-500-38S	Countryside Estates	5504	\$	691.27
56.	053-500-40S	Countryside Estates	5504	\$	691.27
57.	053-500-42S	Countryside Estates	5504	\$	691.27
58.	053-500-43S	Countryside Estates	5504	\$	691.27
59.	053-500-44S	Countryside Estates	5504	\$	691.27
60.	053-500-45S	Countryside Estates	5504	\$	691.27
61.	053-500-46S	Countryside Estates	5504	\$	691.27
62.	053-500-48S	Countryside Estates	5504	\$	691.27
63.	053-500-49S	Countryside Estates	5504	\$	691.27
64.	053-500-50S	Countryside Estates	5504	\$	691.27
65.	053-500-51S	Countryside Estates	5504	\$	691.27
66.	053-500-52S	Countryside Estates	5504	\$	691.27
67.	053-500-53S	Countryside Estates	5504	\$	691.27
68.	053-500-55S	Countryside Estates	5504	\$	691.27
69.	053-500-57S	Countryside Estates	5504	\$	691.27
70.	053-500-59S	Countryside Estates	5504	\$	691.27
71.	053-500-60S	Countryside Estates	5504	\$	691.27
72.	053-511-01S	County Meadows	5397	\$	691.27
73.	053-511-02S	County Meadows	5397	\$	691.27
74.	053-511-03S	County Meadows	5397	\$	691.27
75.	053-511-04S	County Meadows	5397	\$	691.27
76.	053-511-06S	County Meadows	5397	\$	691.27
77.	053-511-07S	County Meadows	5397	\$	691.27
78.	053-511-09S	County Meadows	5397	\$	691.27
79.	053-511-12S	County Meadows	5397	\$	691.27



80.	053-511-14S	County Meadows	5397	\$	691.27
81.	053-513-11S	County Meadows	5397	\$	691.27
82.	053-513-13S	County Meadows	5397	\$	691.27
83.	053-514-04S	County Meadows	5397	\$	691.27
84.	053-515-01S	County Meadows	5397	\$	691.27
85.	053-515-02S	County Meadows	5397	\$	691.27
86.	053-515-03S	County Meadows	5397	\$	691.27
87.	053-515-04S	County Meadows	5397	\$	691.27
88.	053-515-05S	County Meadows	5397	\$	691.27
89.	053-515-06S	County Meadows	5397	\$	691.27
90.	136-350-29	Timber Ridge	5485	\$	691.27
91.	136-360-25	Timber Ridge	5485	\$	691.27
92.	136-360-27	Timber Ridge	5485	\$	691.27
93.	136-360-30	Timber Ridge	5485	\$	691.27
94.	136-371-09	Quartz Mountain	5276	\$	691.27
95.	136-371-15	Quartz Mountain	5276	\$	691.27
96.	136-372-12	Quartz Mountain	5276	\$	691.27
97.	136-373-05	Quartz Mountain	5276	\$	691.27
98.	136-375-05	Quartz Mountain	5276	\$	691.27
99.	136-375-06	Quartz Mountain	5276	\$	691.27
100.	136-375-07	Quartz Mountain	5276	\$	691.27
101.	136-375-12	Quartz Mountain	5276	\$	691.27
102.	136-375-13	Quartz Mountain	5276	\$	691.27
103.	136-375-17	Quartz Mountain	5276	\$	691.27
104.	136-375-22	Quartz Mountain	5276	\$	691.27
105.	136-375-26	Quartz Mountain	5276	\$	691.27
106.	136-375-30	Quartz Mountain	5276	\$	691.27
107.	136-390-13	Tract No. 5990	5990	\$	691.27
108.	136-390-21	Tract No. 5990	5990	\$	691.27
109.	136-390-22	Tract No. 5990	5990	\$	691.27
110.	136-390-24	Tract No. 5990	5990	\$	691.27
111.	136-390-26	Tract No. 5990	5990	\$	691.27
112.	136-390-27	Tract No. 5990	5990	\$	691.27
113.	136-390-28	Tract No. 5990	5990	\$	691.27
114.	136-400-45	Tract No. 5990	5990	\$	691.27
115.	136-400-46	Tract No. 5990	5990	\$	691.27
116.	300-630-01S	Granite Crest	4870	\$	691.27
117.	300-630-02S	Granite Crest	4870	\$	691.27
118.	300-630-03S	Granite Crest	4870	\$	691.27
119.	300-630-04S	Granite Crest	4870	\$	691.27
120.	300-630-05S	Granite Crest	4870	\$	691.27
121.	300-630-06S	Granite Crest	4870	\$	691.27
122.	300-630-07S	Granite Crest	4870	\$	691.27
123.	300-630-08S	Granite Crest	4870	\$	691.27
124.	300-630-09S	Granite Crest	4870	\$	691.27
125.	300-630-10S	Granite Crest	4870	\$	691.27
126.	300-630-12S	Granite Crest	4870	\$	691.27
127.	300-630-13S	Granite Crest	4870	\$	691.27
128.	300-630-15S	Granite Crest	4870	\$	691.27
129.	300-630-16S	Granite Crest	4870	\$	691.27
130.	300-630-17S	Granite Crest	4870	\$	691.27
131.	300-630-18S	Granite Crest	4870	\$	691.27


132.	300-630-19S	Granite Crest	4870	\$	691.27
133.	300-630-20S	Granite Crest	4870	\$	691.27
134.	300-630-21S	Granite Crest	4870	\$	691.27
135.	300-630-22S	Granite Crest	4870	\$	691.27
136.	300-630-23S	Granite Crest	4870	\$	691.27
137.	300-630-24S	Granite Crest	4870	\$	691.27
138.	300-630-25S	Granite Crest	4870	\$	691.27
139.	300-641-01S	Granite Crest	4870	\$	691.27
140.	300-641-02S	Granite Crest	4870	\$	691.27
141.	300-641-03S	Granite Crest	4870	\$	691.27
142.	300-641-04S	Granite Crest	4870	\$	691.27
143.	300-641-05S	Granite Crest	4870	\$	691.27
144.	300-641-06S	Granite Crest	4870	\$	691.27
145.	300-641-07S	Granite Crest	4870	\$	691.27
146.	300-641-08S	Granite Crest	4870	\$	691.27
147.	300-641-09S	Granite Crest	4870	\$	691.27
148.	300-641-10S	Granite Crest	4870	\$	691.27
149.	300-641-11S	Granite Crest	4870	\$	691.27
150.	300-641-12S	Granite Crest	4870	\$	691.27
151.	300-641-13S	Granite Crest	4870	\$	691.27
152.	300-641-14S	Granite Crest	4870	\$	691.27
153.	300-641-15S	Granite Crest	4870	\$	691.27
154.	300-641-16S	Granite Crest	4870	\$	691.27
155.	300-642-01S	Granite Crest	4870	\$	691.27
156.	300-642-02S	Granite Crest	4870	\$	691.27
157.	300-642-05S	Granite Crest	4870	\$	691.27
158.	300-642-06S	Granite Crest	4870	\$	691.27
159.	300-642-07S	Granite Crest	4870	\$	691.27
160.	300-643-01S	Granite Crest	4870	\$	691.27
161.	300-643-02S	Granite Crest	4870	\$	691.27
162.	300-643-03S	Granite Crest	4870	\$	691.27
163.	300-643-04S	Granite Crest	4870	\$	691.27
164.	300-643-06S	Granite Crest	4870	\$	691.27
165.	300-643-07S	Granite Crest	4870	\$	691.27
166.	300-643-08S	Granite Crest	4870	\$	691.27
167.	300-643-09S	Granite Crest	4870	\$	691.27
168.	300-643-10S	Granite Crest	4870	\$	691.27
169.	300-643-12S	Granite Crest	4870	\$	691.27
170.	300-643-13S	Granite Crest	4870	\$	691.27
171.	300-643-14S	Granite Crest	4870	\$	691.27
172.	300-643-15S	Granite Crest	4870	\$	691.27
173.	300-643-16S	Granite Crest	4870	\$	691.27
174.	300-643-17S	Granite Crest	4870	\$	691.27
175.	300-643-18S	Granite Crest	4870	\$	691.27
176.	300-643-19S	Granite Crest	4870	\$	691.27
177.	300-643-20S	Granite Crest	4870	\$	691.27
178.	300-643-21S	Granite Crest	4870	\$	691.27
179.	300-643-22S	Granite Crest	4870	\$	691.27
180.	300-643-23S	Granite Crest	4870	\$	691.27
181.	300-643-24S	Granite Crest	4870	\$	691.27
182.	300-643-26S	Granite Crest	4870	\$	691.27
183.	300-643-27S	Granite Crest	4870	\$	691.27

184.	300-643-28S	Granite Crest	4870	\$	691.27
185.	300-643-29S	Granite Crest	4870	\$	691.27
186.	300-643-30S	Granite Crest	4870	\$	691.27
187.	300-643-31S	Granite Crest	4870	\$	691.27
188.	300-643-32S	Granite Crest	4870	\$	691.27
189.	300-644-01S	Granite Crest	4870	\$	691.27
190.	300-644-02S	Granite Crest	4870	\$	691.27
191.	300-644-03S	Granite Crest	4870	\$	691.27
192.	300-644-04S	Granite Crest	4870	\$	691.27
193.	300-644-05S	Granite Crest	4870	\$	691.27
194.	300-644-06S	Granite Crest	4870	\$	691.27
195.	300-644-08S	Granite Crest	4870	\$	691.27
196.	300-644-09S	Granite Crest	4870	\$	691.27
197.	300-644-10S	Granite Crest	4870	\$	691.27
198.	300-644-12S	Granite Crest	4870	\$	691.27
199.	300-644-13S	Granite Crest	4870	\$	691.27
200.	300-644-14S	Granite Crest	4870	\$	691.27
201.	300-650-01S	Granite Crest	4870	\$	691.27
202.	300-650-02S	Granite Crest	4870	\$	691.27
203.	300-650-03S	Granite Crest	4870	\$	691.27
204.	300-650-04S	Granite Crest	4870	\$	691.27
205.	300-650-05S	Granite Crest	4870	\$	691.27
206.	300-650-06S	Granite Crest	4870	\$	691.27
207.	300-650-07S	Granite Crest	4870	\$	691.27
208.	300-650-08S	Granite Crest	4870	\$	691.27
209.	300-650-09S	Granite Crest	4870	\$	691.27
210.	300-650-10S	Granite Crest	4870	\$	691.27
211.	300-650-11S	Granite Crest	4870	\$	691.27
212.	300-650-12S	Granite Crest	4870	\$	691.27
213.	300-650-13S	Granite Crest	4870	\$	691.27
214.	300-650-14S	Granite Crest	4870	\$	691.27
215.	300-650-15S	Granite Crest	4870	\$	691.27
216.	300-650-16S	Granite Crest	4870	\$	691.27
217.	300-650-17S	Granite Crest	4870	\$	691.27
218.	300-650-18S	Granite Crest	4870	\$	691.27
219.	300-650-19S	Granite Crest	4870	\$	691.27
220.	300-650-20S	Granite Crest	4870	\$	691.27
221.	300-650-21S	Granite Crest	4870	\$	691.27
222.	300-650-22S	Granite Crest	4870	\$	691.27
223.	300-650-23S	Granite Crest	4870	\$	691.27
224.	300-650-24S	Granite Crest	4870	\$	691.27
225.	300-650-25S	Granite Crest	4870	\$	691.27
226.	300-650-26S	Granite Crest	4870	\$	691.27
227.	300-650-27S	Granite Crest	4870	\$	691.27
228.	300-650-28S	Granite Crest	4870	\$	691.27
229.	300-650-29S	Granite Crest	4870	\$	691.27
230.	300-650-30S	Granite Crest	4870	\$	691.27
231.	300-650-31S	Granite Crest	4870	\$	691.27
232.	300-660-01S	Granite Crest	4870	\$	691.27
233.	300-660-02S	Granite Crest	4870	\$	691.27
234.	300-660-03S	Granite Crest	4870	\$	691.27
235.	300-660-04S	Granite Crest	4870	\$	691.27

236.	300-660-05S	Granite Crest	4870	\$	691.27
237.	300-660-06S	Granite Crest	4870	\$	691.27
238.	300-660-07S	Granite Crest	4870	\$	691.27
239.	300-660-08S	Granite Crest	4870	\$	691.27
240.	300-660-10S	Granite Crest	4870	\$	691.27
241.	300-660-11S	Granite Crest	4870	\$	691.27
242.	300-660-12S	Granite Crest	4870	\$	691.27
243.	300-660-13S	Granite Crest	4870	\$	691.27
244.	300-660-14S	Granite Crest	4870	\$	691.27
245.	300-660-15S	Granite Crest	4870	\$	691.27
246.	300-660-16S	Granite Crest	4870	\$	691.27
247.	300-660-17S	Granite Crest	4870	\$	691.27
248.	300-660-18S	Granite Crest	4870	\$	691.27
249.	300-660-19S	Granite Crest	4870	\$	691.27
250.	300-660-20S	Granite Crest	4870	\$	691.27
251.	300-660-21S	Granite Crest	4870	\$	691.27
252.	300-660-22S	Granite Crest	4870	\$	691.27
253.	300-660-23S	Granite Crest	4870	\$	691.27
254.	300-660-24S	Granite Crest	4870	\$	691.27
255.	300-660-25S	Granite Crest	4870	\$	691.27
256.	300-660-26S	Granite Crest	4870	\$	691.27
257.	300-660-27S	Granite Crest	4870	\$	691.27
258.	300-660-29S	Granite Crest	4870	\$	691.27
259.	300-660-30S	Granite Crest	4870	\$	691.27
260.	300-660-31S	Granite Crest	4870	\$	691.27
261.	300-660-32S	Granite Crest	4870	\$	691.27
262.	300-660-33S	Granite Crest	4870	\$	691.27
263.	300-660-36S	Granite Crest	4870	\$	691.27
264.	309-390-01	Red Hawk	5126	\$	691.27
265.	309-390-02	Red Hawk	5126	\$	691.27
266.	309-390-03	Red Hawk	5126	\$	691.27
267.	309-390-04	Red Hawk	5126	\$	691.27
268.	309-390-05	Red Hawk	5126	\$	691.27
269.	309-390-06	Red Hawk	5126	\$	691.27
270.	309-390-07	Red Hawk	5126	\$	691.27
271.	309-390-08	Red Hawk	5126	\$	691.27
272.	309-390-09	Red Hawk	5126	\$	691.27
273.	309-390-10	Red Hawk	5126	\$	691.27
274.	309-390-11	Red Hawk	5126	\$	691.27
275.	309-390-12	Red Hawk	5126	\$	691.27
276.	309-390-13	Red Hawk	5126	\$	691.27
277.	309-390-14	Red Hawk	5126	\$	691.27
278.	309-390-15	Red Hawk	5126	\$	691.27
279.	309-390-18	Red Hawk	5126	\$	691.27
280.	309-390-19	Red Hawk	5126	\$	691.27
281.	309-390-20	Red Hawk	5126	\$	691.27
282.	309-390-21	Red Hawk	5126	\$	691.27
283.	309-390-22	Red Hawk	5126	\$	691.27
284.	309-390-23	Red Hawk	5126	\$	691.27
285.	309-390-24	Red Hawk	5126	\$	691.27
286.	309-390-25	Red Hawk	5126	\$	691.27
287.	309-390-26	Red Hawk	5126	\$	691.27

288.	309-390-27	Red Hawk	5126	\$ 691.27
289.	309-390-28	Red Hawk	5126	\$ 691.27
290.	309-390-29	Red Hawk	5126	\$ 691.27
291.	309-390-30	Red Hawk	5126	\$ 691.27
292.	309-390-31	Red Hawk	5126	\$ 691.27
293.	309-400-01	Red Hawk	5126	\$ 691.27
294.	309-400-02	Red Hawk	5126	\$ 691.27
295.	309-400-03	Red Hawk	5126	\$ 691.27
296.	309-400-09	Red Hawk	5126	\$ 691.27
297.	309-400-15	Red Hawk	5126	\$ 691.27
298.	309-400-18	Red Hawk	5126	\$ 691.27
299.	309-410-23	Hatfield	5334	\$ 691.27
300.	309-410-25	Hatfield	5334	\$ 691.27
301.	309-410-27	Hatfield	5334	\$ 691.27
302.	309-410-28	Hatfield	5334	\$ 691.27
<b>Total</b>				<b><u>\$208,763.54</u></b>

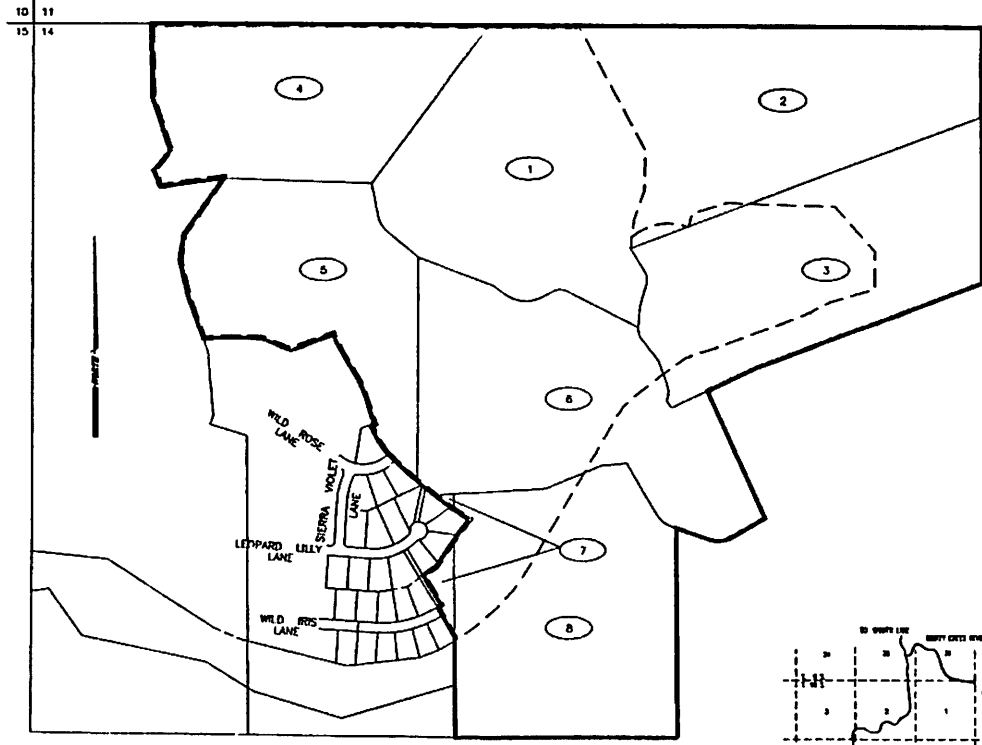
- The specific amount(s) of the Special Tax, above, are at the "Adopted Rate(s)" (as that term is defined in the resolution of the Board of Supervisors to which this certificate relates) of the Special Tax of the District for such land use classification and description, all of which I have calculated according to the Special Tax Rate and Method of Apportionment of the District.
- Each of the capitalized terms in this certificate that is not defined in this certificate has the meaning given to it in the Special Tax Rate and Method of Apportionment of the District. All documents referred to in this certificate are on file with the Sheriff-Coroner's Business Office (2200 Fresno Street, Fresno, California 93717), and are available for inspection by the public during the regular business hours of that office.

By  \_\_\_\_\_  
**Thomas Trester**

Date: 6/15/17

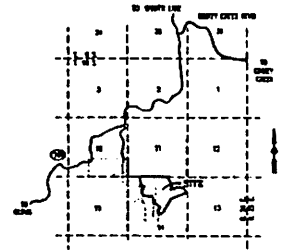
MAP OF PROPOSED BOUNDARIES OF COMMUNITY FACILITIES  
DISTRICT No. 2006-01 ANNEXATION 2A (POLICE PROTECTION SERVICES)

SITE 1



**LEGEND**  
 ——— CFD BOUNDARY  
 - - - - TRACT 5737 BOUNDARY  
 (1) ASSESSMENT NUMBER

ADPT NO	ASSESSOR'S PARCEL NO	SITE NO	TRACT NO
1	130-580-03	1	5737
2	130-580-08	2	5737
3	130-580-07	3	5737
4	130-580-06	4	5737
5	130-580-13	5	5737
6	130-580-14	6	5737
7	130-570-22	7	5737
8	130-570-23	8	5737



VICINITY MAP

FILED IN THE OFFICE OF THE CLERK TO THE BOARD OF SUPERVISORS THIS  
28th DAY OF September 2006

I HEREBY CERTIFY THAT THE WITHIN MAP SHOWING PROPOSED BOUNDARIES OF COMMUNITY FACILITIES DISTRICT NO. 2006-01 ANNEXATION 2A (POLICE PROTECTION SERVICES), COUNTY OF FRESNO, STATE OF CALIFORNIA, WAS APPROVED BY THE BOARD OF SUPERVISORS OF COUNTY OF FRESNO AT A REGULAR MEETING THEREOF HELD ON THE 26th DAY OF September, 2006 BY ITS RESOLUTION NO. 06-5737.

*Shawn L. Coon, Deputy*  
 CLERK TO THE BOARD OF SUPERVISORS  
 COUNTY OF FRESNO

FILED THIS 28th DAY OF Sept. 2006 AT THE HOUR OF 2:18 O'CLOCK P.M. IN BOOK 41 PAGE(S) 26, 27 OF MAPS OF ASSESSMENT AND COMMUNITY FACILITIES DISTRICTS AND AS INSTRUMENT NO. 2006000943 IN THE OFFICE OF THE COUNTY RECORDER IN THE COUNTY OF FRESNO, STATE OF CALIFORNIA

*Robert C. Werner*  
 DEPUTY RECORDER  
 FRESNO COUNTY RECORDER

THE LINES AND DIMENSIONS OF EACH LOT OR PARCEL SHOWN ON THIS DIAGRAM SHALL BE THOSE LINES AND DIMENSIONS AS SHOWN ON THE FRESNO COUNTY ASSESSOR'S MAP FOR THOSE PARCELS LISTED.

THE FRESNO COUNTY ASSESSOR'S MAPS SHALL GOVERN FOR ALL DETAILS CONCERNING THE LINES AND DIMENSIONS OF SUCH LOTS AND PARCELS.

THE BOARD OF SUPERVISORS OF THE COUNTY OF FRESNO APPROVED THE ORIGINAL BOUNDARY MAP OF THE DISTRICT, ENTITLED "MAP OF PROPOSED BOUNDARIES OF COMMUNITY FACILITIES DISTRICT NO. 2006-01 (POLICE PROTECTION SERVICES), COUNTY OF FRESNO, STATE OF CALIFORNIA" WHICH WAS FILED PERMISSANT TO SECTION 31111 OF THE CALIFORNIA STREETS AND HIGHWAYS CODE ON APRIL 3, 2006 IN BOOK 41, AT PAGES 26 AND 27, OF MAPS OF ASSESSMENT AND COMMUNITY FACILITIES DISTRICTS, IN THE OFFICE OF THE COUNTY RECORDER OF THE COUNTY OF FRESNO, STATE OF CALIFORNIA, AS INSTRUMENT NO. 2006000943.

PREPARED BY

IWF BREWER ENGINEERING  
 P.O. BOX 478  
 ALBANY, GA 31707  
 (706) 820-3112  
 RCE 31487

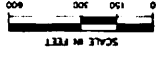
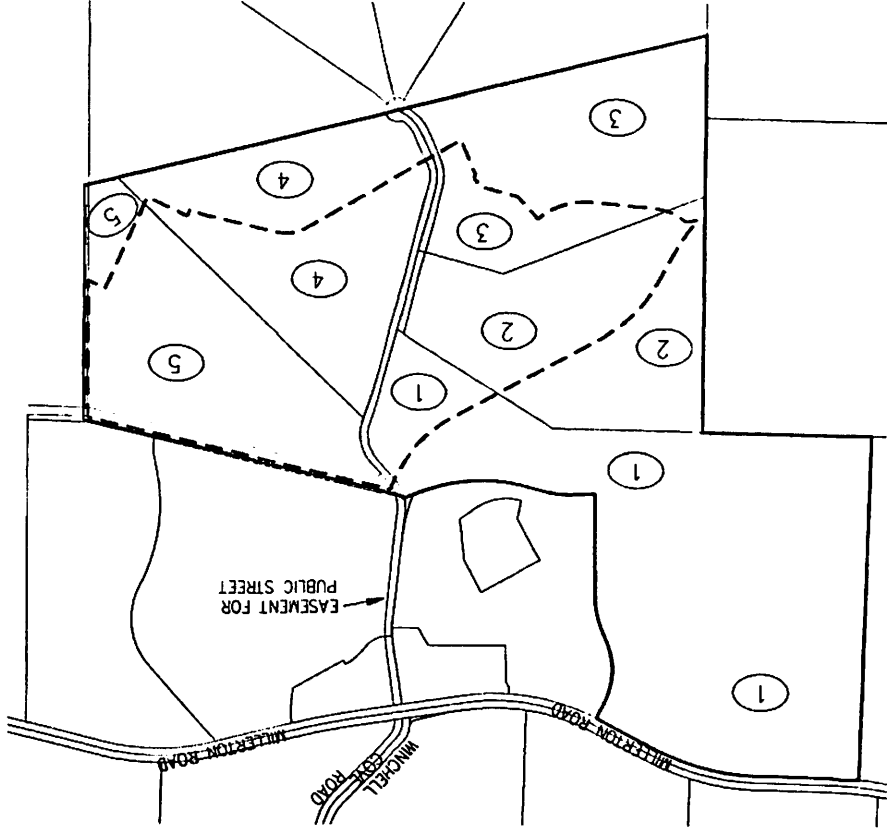
Exhibit C (cont'd)

27

MAP OF PROPOSED BOUNDARIES OF  
 COMMUNITY FACILITIES DISTRICT NO. 2006-01 ANNEXATION 2A (POLICE PROTECTION SERVICES)

SHEET 2 OF 2

STATE OF CALIFORNIA  
 COUNTY OF FRESNO



ASMT. NO.	PARCEL NO.	SITE NO.	TRACT.
1	300-540-265	2	4870
2	300-540-085	2	4870
3	300-540-095	2	4870
4	300-540-145	2	4870
5	300-540-155	2	4870

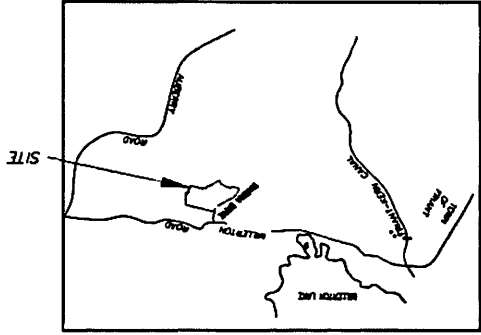
LEGEND

— CFD BOUNDARY

- - - TRACT 4870 BOUNDARY

① ASSESSMENT NUMBER

VICINITY MAP  
 NOT TO SCALE



Prepared by

**PROVOST & PRITCHARD**  
 ENGINEERING GROUP

EST. 1968

286 WEST CROMWELL AVENUE  
 FRESNO, CALIFORNIA 93711-6162  
 559/449-2700 FAX 559/449-2715

DATE: 08/10/06  
 JOB NO.: 11640201

Exhibit C (cont'd)

**EXHIBIT A**  
 ANNEXATION MAP NO. 88 OF  
 COMMUNITY FACILITIES DISTRICT NO. 2006-01 (POLICE PROTECTION SERVICES),  
 COUNTY OF FRESNO, STATE OF CALIFORNIA

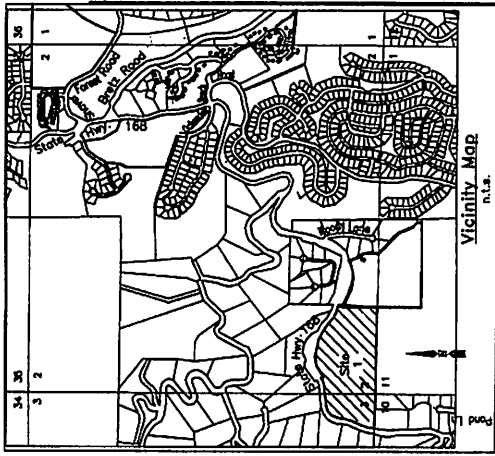
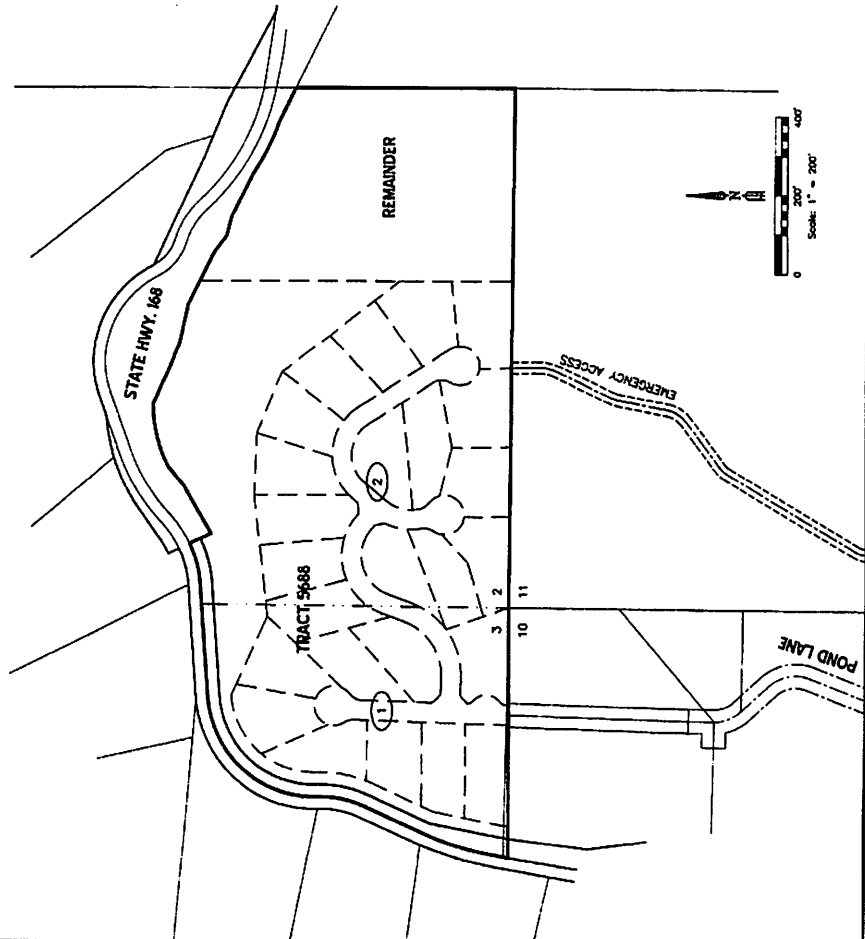
PREPARED BY:  
 STRAHM ENGINEERING ASSOCIATES, INC.  
 5100 N. Sixth St. # 117, FRESNO CA. 93710  
 PH. (559) 227-8680 FAX (559) 227-8860

SITE #1

LEGEND

- TRACT 5688 AND REMAINDER/CFD BOUNDARY
- - - TRACT 5688 LOT LINES
- ① ASSESSMENT NUMBER

ASMT. No.	ASSESSOR'S PARCEL No.	SITE No.	TRACT MAP No.
1	130-410-01	1	5688
2	130-430-28	1	5688 & REMAINDER



I, HEREBY CERTIFY THAT THE WITHIN MAP SHOWING BOUNDARIES OF ANNEXATION NO. 88 OF COMMUNITY FACILITIES DISTRICT NO. 2006-01 (POLICE PROTECTION SERVICES), COUNTY OF FRESNO, STATE OF CALIFORNIA, WAS APPROVED BY THE BOARD OF SUPERVISORS OF THE COUNTY OF FRESNO AT A REGULAR MEETING THEREOF HELD ON THE 15 DAY OF January, 2015 BY ITS RESOLUTION No. 15-2028

FILED IN THE OFFICE OF THE CLERK TO THE BOARD OF SUPERVISORS THIS 15 DAY OF January, 2015

*[Signature]*  
 CLERK TO THE BOARD OF SUPERVISORS  
 OF THE COUNTY OF FRESNO

FILED THIS 15 DAY OF January, 2015 AT THE HOUR OF 9:30 O'CLOCK P.M. IN BOOK 144 PAGE(S) 23  
 FACILITIES DISTRICTS AND AS INSTRUMENT No. 2015-0009727  
 IN THE OFFICE OF THE COUNTY RECORDER IN THE COUNTY OF FRESNO, STATE OF CALIFORNIA.

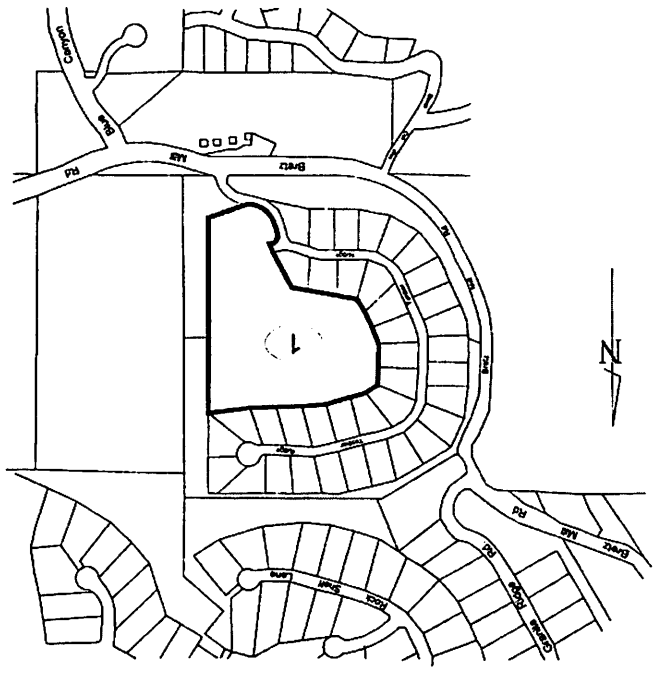
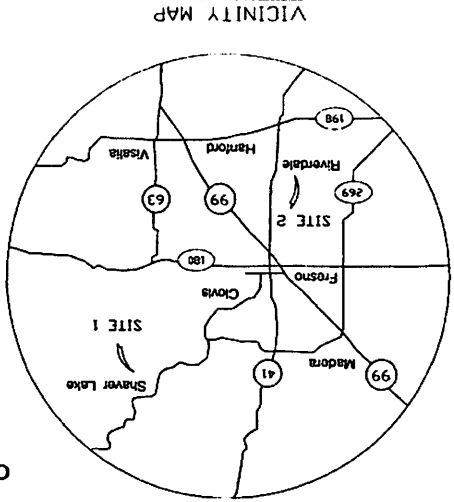
*[Signature]*  
 DEPUTY RECORDER  
 FRESNO COUNTY RECORDER

THE LINES AND DIMENSIONS OF EACH LOT OR PARCEL SHOWN ON THIS DIAGRAM SHALL BE THOSE LINES AND DIMENSIONS AS SHOWN ON THE FRESNO COUNTY ASSESSOR'S MAP FOR THOSE PARCELS LISTED.

THE FRESNO COUNTY ASSESSOR'S MAP SHALL GOVERN FOR ALL DETAIL CONCERNING THE LINES AND DIMENSIONS OF SUCH LOTS AND PARCELS.

THE BOARD OF SUPERVISORS OF THE COUNTY OF FRESNO APPROVED THE ORIGINAL BOUNDARY MAP OF THE DISTRICT, ENTITLED "MAP OF PROPOSED BOUNDARIES OF COMMUNITY FACILITIES DISTRICT NO. 2006-01 (POLICE PROTECTION SERVICES), COUNTY OF FRESNO, STATE OF CALIFORNIA," WHICH IS FILED IN SECTION 3111 OF THE CALIFORNIA STREETS AND HIGHWAYS CODE ON APRIL 3, 2006 IN BOOK 41 AT PAGE 80. THE BOARD OF SUPERVISORS OF THE COUNTY OF FRESNO APPROVED THE ANNEXATION MAP NO. 88 OF THE COUNTY OF FRESNO, STATE OF CALIFORNIA, AS INSTRUMENT NO. 2006008894.





Asmt. No.	Assessor's Parcel No.	Site No.	Tract No.
1	130-031-88	1	5485

LEGEND  
 ——— CFD BOUNDARY  
 ① ASSESSMENT NUMBER

THE LINES AND DIVISIONS OF EACH LOT OR PARCEL SHOWN ON THIS DIAGRAM SHALL BE THOSE LINES AND DIVISIONS AS SHOWN ON THE FRESNO COUNTY ACCESSORS MAPS FOR THOSE PARCELS LISTED.

THE FRESNO COUNTY ASSESSORS MAPS SHALL GOVERN FOR ALL DETAILS CONCERNING THE LINES AND DIVISIONS OF SUCH LOTS OR PARCELS.

STATE OF CALIFORNIA  
 COUNTY OF FRESNO  
 I, David J. Smith, County Registrar  
 do hereby certify that the within map showing proposed boundaries of Community Facilities District No. 2006-01 (Police Protection Services) was filed in my office on the 17th day of April, 2006, at the hour of 10:41 o'clock in Book 41 of Maps of said County, and as witness my hand and the seal of said County of Fresno, this 17th day of April, 2006.

STATE OF CALIFORNIA  
 COUNTY OF FRESNO  
 I, David J. Smith, County Registrar  
 do hereby certify that the within map showing proposed boundaries of Community Facilities District No. 2006-01 (Police Protection Services) was filed in my office on the 17th day of April, 2006, at the hour of 10:41 o'clock in Book 41 of Maps of said County, and as witness my hand and the seal of said County of Fresno, this 17th day of April, 2006.

MAP OF PROPOSED BOUNDARIES OF  
 COMMUNITY FACILITIES DISTRICT NO. 2006-01 (POLICE PROTECTION SERVICES)

Exhibit C (cont'd)

80

Exhibit C (cont'd)

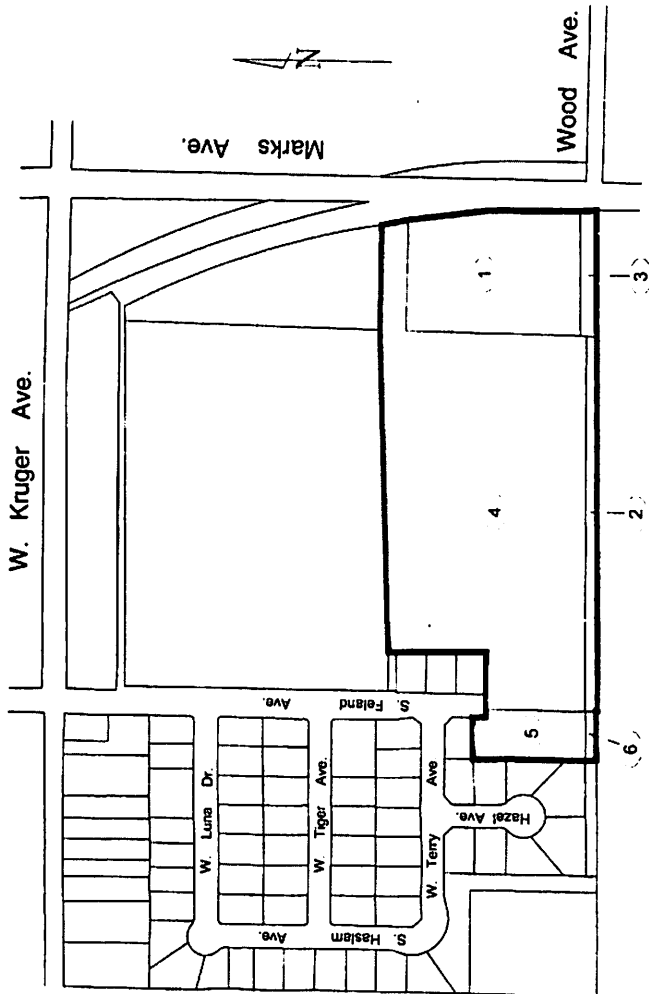
81

SHEET 2 OF 2

MAP OF PROPOSED BOUNDARIES OF  
COMMUNITY FACILITIES DISTRICT NO. 2006-01 (POLICE PROTECTION SERVICES)

COUNTY OF FRESNO  
STATE OF CALIFORNIA

SITE 2



LEGEND  
 ——— CFD BOUNDARY  
 ( 1 ) ASSESSMENT NUMBER

Asmt. No.	Assessor's Parcel No.	Site No.	Tract No.
1	053-380-31S	2	5504
2	053-380-65	2	5504
3	053-380-66	2	5504
4	053-380-69S	2	5504
5	053-490-26S	2	5504
6	053-490-27	2	5504

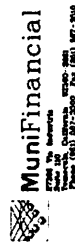






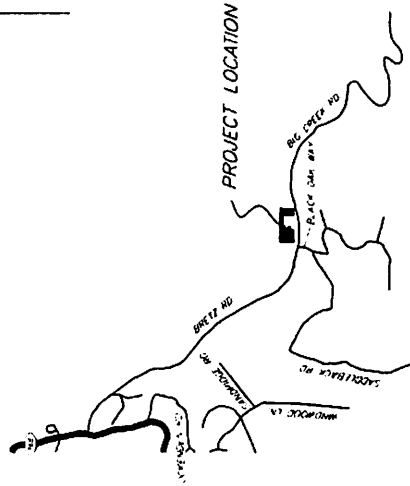
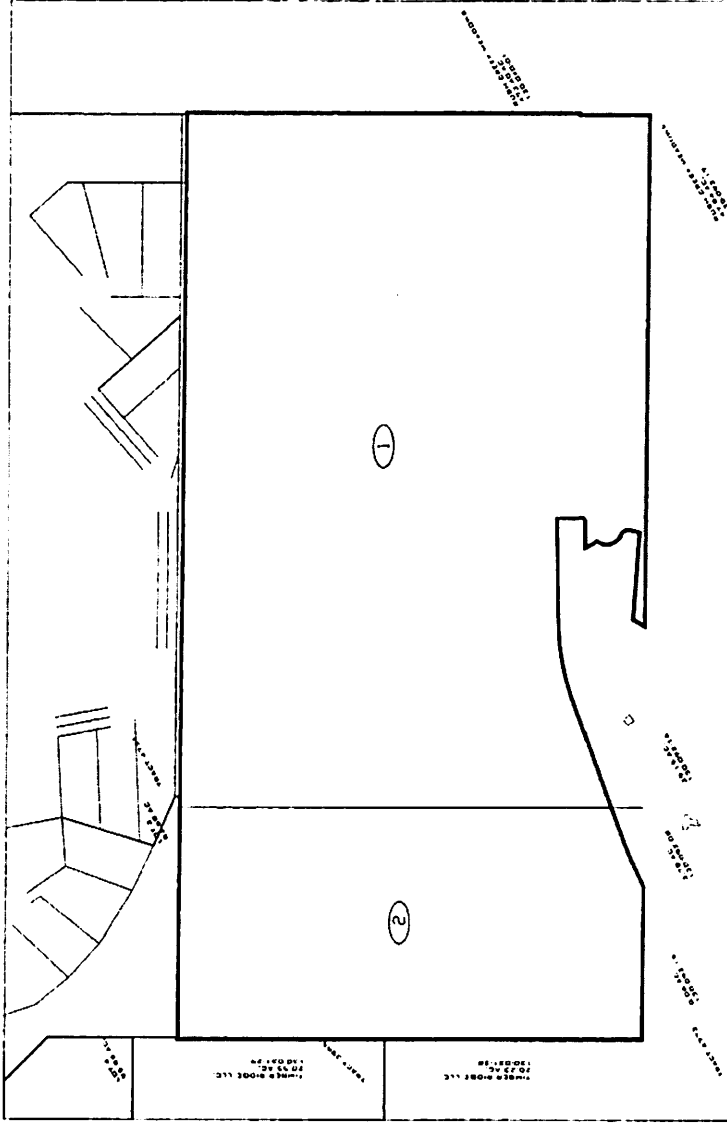
Exhibit C (cont'd)

SHEET 3 OF 4

MAP OF PROPOSED BOUNDARIES OF  
COMMUNITY FACILITIES DISTRICT NO. 2006-01 ANNEXATION 1A (POLICE PROTECTION SERVICES)

COUNTY OF FRESNO  
STATE OF CALIFORNIA

SITE 3



VICINITY MAP

NO SCALE

LEGEND:  
 --- CTD BOUNDARY  
 (1) ASSESSMENT NUMBER

Assmt No.	Assessor's Parcel No.	Site No.	Tract No.
1	130-031-81	J	5276
2	130-031-83	J	5278



7200 N. MISSION ST. FRESNO, CA 93720-1000 (509) 251-1000

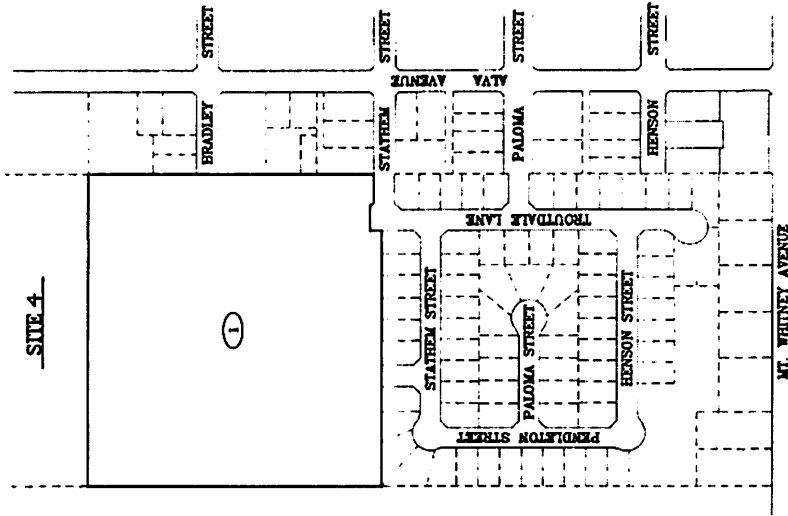
Exhibit (cont'd)

94

# MAP OF PROPOSED BOUNDARIES OF COMMUNITY FACILITIES DISTRICT No. 2006-01 ANNEXATION 1A (POLICE PROTECTION SERVICES)

SHEET 4 OF 4

COUNTY OF FRESNO  
STATE OF CALIFORNIA

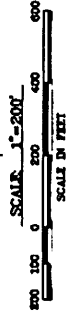


ASMT No	ASSESSOR'S PARCEL No	SITE No	TRACT No
1	053-440-205	4	5307

**LEGEND**

--- CITY BOUNDARY

① ASSESSMENT NUMBER



NOT FOR CONSTRUCTION  
DATE: MAY 18, 2009  
JOB No. 0-09770  
Drawn By: G. Lawrence  
Drawing No. \_\_\_\_\_

**R. W. Greenwood Associates, Inc.**  
CIVIL ENGINEERING LAND SURVEYING  
Fresno, California 93701  
Tel: (559) 283-7631







Exhibit C (cont'd)

ANNEXATION MAP NO. 8A OF  
 COMMUNITY FACILITIES DISTRICT NO. 2006-01 (POLICE PROTECTION SERVICES),  
 COUNTY OF FRESNO, CALIFORNIA  
 SHEET 1 OF 1  
 SITE 1  
 REDWOOD PARK  
 Bk. 5, Pg. 4 OF RECORD OF SURVEYS, F.C.R.  
 FILED IN THE OFFICE OF THE CLERK TO THE BOARD OF SUPERVISORS THIS 11 DAY OF January 2015

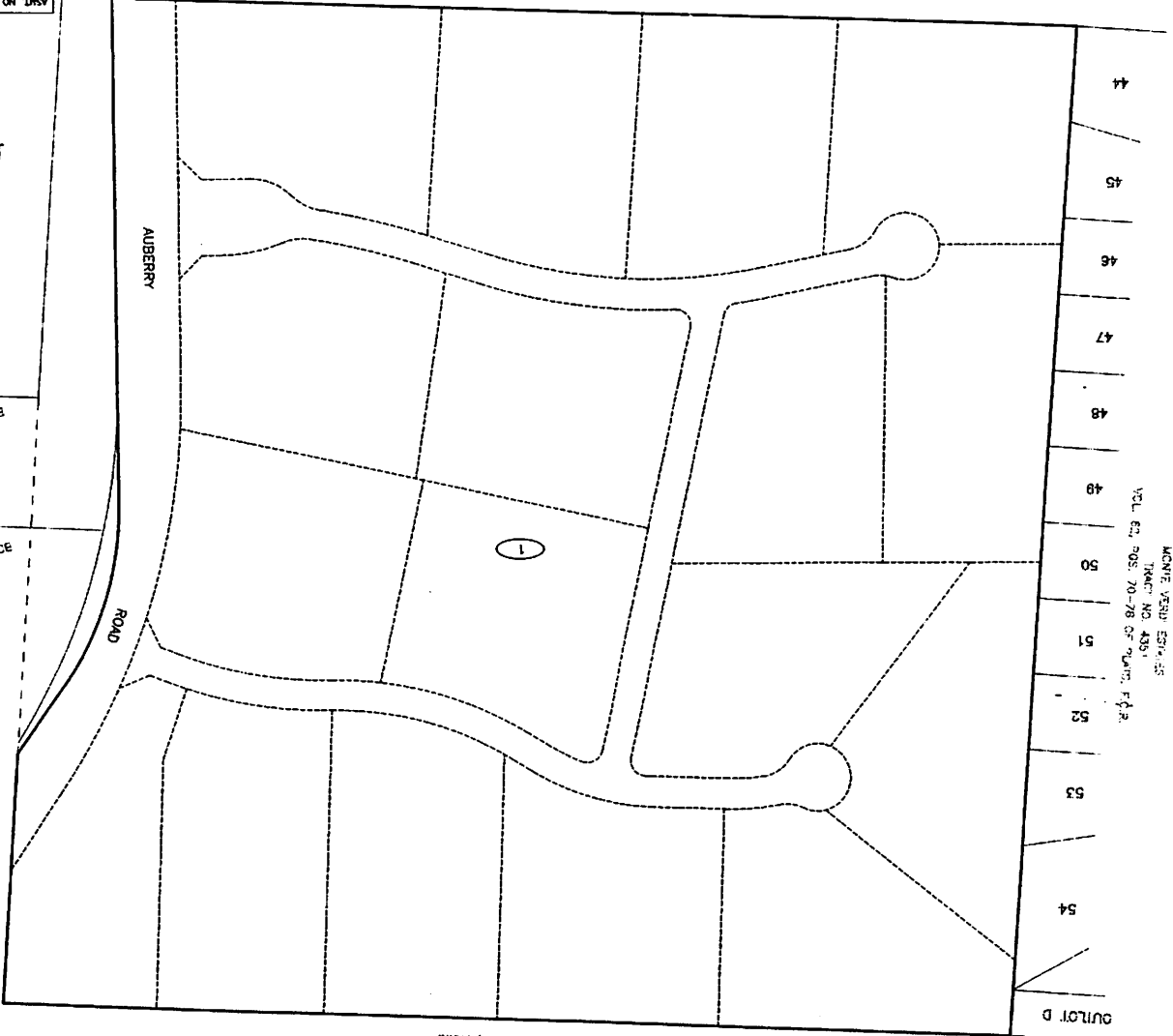
CLERK TO THE BOARD OF SUPERVISORS  
Don Lutz  
 OF THE COUNTY OF FRESNO

FILED THIS 11 DAY OF January 2015 AT THE HOUR OF 12:57 O'CLOCK P.M. IN BOOK 44  
 INSTRUMENT NO. 2015-001419 IN THE OFFICE OF THE COUNTY RECORDER IN THE COUNTY  
 OF FRESNO, STATE OF CALIFORNIA.  
**Paul D'Arcy, City Assessor-Recorder**  
 OF THE COUNTY OF FRESNO  
Paul D'Arcy  
 DEPUTY RECORDER  
 FRESNO COUNTY RECORDER

THE LINES AND DIMENSIONS OF EACH LOT OR PARCEL SHOWN ON THIS DIAGRAM SHALL BE THOSE  
 LISTED.  
 THE LINES AND DIMENSIONS AS SHOWN ON THE FRESNO COUNTY ASSESSORS MAP FOR THOSE PARCELS  
 THE FRESNO COUNTY ASSESSORS MAP SHALL GOVERN FOR ALL DETAIL CONCERNING THE LINES AND  
 DIMENSIONS OF SUCH LOTS AND PARCELS.  
 THE BOARD OF SUPERVISORS OF THE COUNTY OF FRESNO APPROVED THE ORIGINAL BOUNDARY MAP  
 2006-01 (POLICE PROTECTION SERVICES) COUNTY OF FRESNO, STATE OF CALIFORNIA WHICH WAS  
 FILED PURSUANT TO SECTION 3111 OF THE CALIFORNIA STREETS AND HIGHWAYS CODE, ON APRIL 5,  
 2006. IN BOOK 41, AT PAGES 80 AND 81 OF MAPS OF ASSESSMENT AND COMMUNITY FACILITIES  
 DISTRICTS IN THE OFFICE OF THE COUNTY RECORDER OF THE COUNTY OF FRESNO, STATE OF  
 CALIFORNIA AS INSTRUMENT NO. 2006006943.

PARCEL 3  
 PARCEL MAP NO. 2706  
 BOOK 17, PAGE 99 OF PARCEL MAPS, F.C.R.

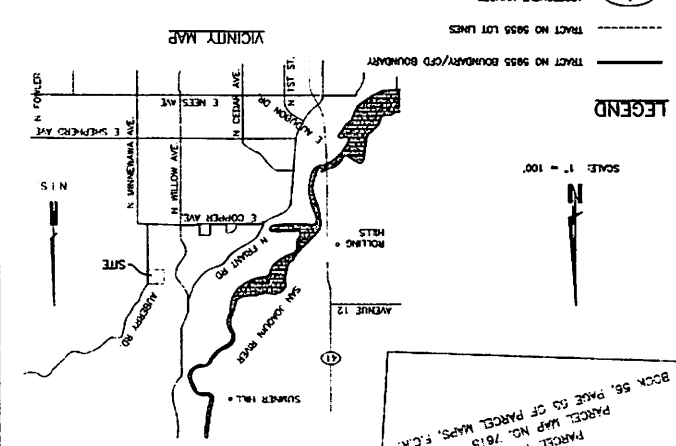
PARCEL 1  
 PARCEL MAP NO. 7615  
 BOOK 58, PAGE 63 OF PARCEL MAPS, F.C.R.



MONTE VISTO EST. 35  
 TRACT NO. 439  
 VOL. 62, PAGES 70-78 OF MAPS, F.C.R.

ASST. NO.	1	500-020-13	1	9895
ASSESSOR'S PARCEL NO.	1	500-020-13	1	9895
TRACT MAP NO.	1	500-020-13	1	9895

1115 N. STREET  
 FRESNO, CA 93721  
 (530) 244-3080



LEGEND

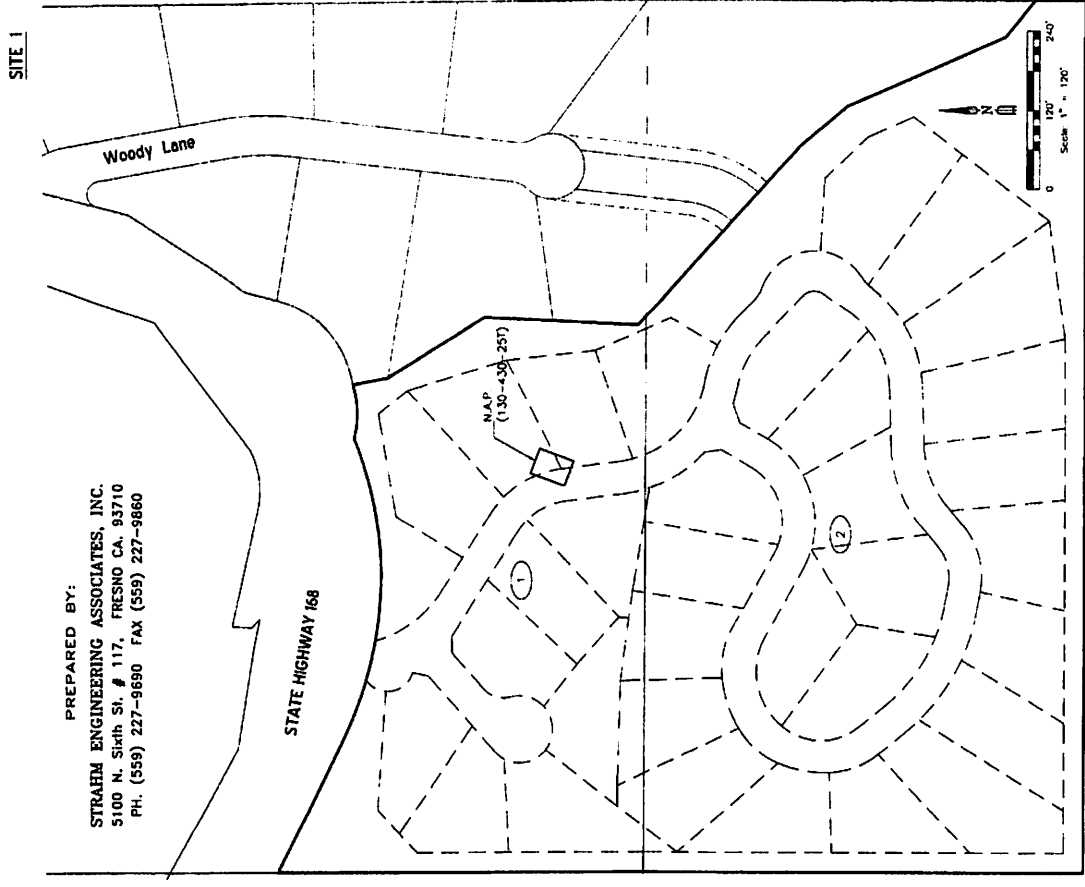
- 1 ASSESSMENT NUMBER
- TRACT NO 9895 LOT LINES
- TRACT NO 9895 BOUNDARY/CFD BOUNDARY

GARY G. GIANNETTA  
 CIVIL ENGINEERING & LAND SURVEYING

Exhibit (cont'd)

ANNEXATION MAP NO. 7A OF  
COMMUNITY FACILITIES DISTRICT NO. 2006-01 (POLICE PROTECTION SERVICES),  
COUNTY OF FRESNO, CALIFORNIA

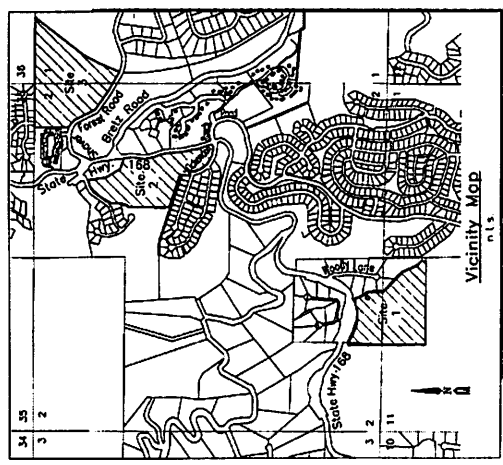
PREPARED BY:  
STRAHM ENGINEERING ASSOCIATES, INC.  
5100 N. Sixth St. # 117, FRESNO CA. 93710  
PH. (559) 227-9690 FAX (559) 227-9660



LEGEND

- TRACT 5305 BOUNDARY/CFD BOUNDARY
- - - TRACT 5305 LOT LINES
- (1) ASSESSMENT NUMBER
- N.A.P. NOT A PART

ASMT. No.	ASSESSOR'S PARCEL No.	SITE No.	TRACT MAP No.
1	130-430-32	1	5305
2	130-430-45	1	5305



I, HEREBY CERTIFY THAT THE WITHIN MAP SHOWING BOUNDARIES OF ANNEXATION NO. 7A OF COMMUNITY FACILITIES DISTRICT NO. 2006-01 (POLICE PROTECTION SERVICES), COUNTY OF FRESNO, STATE OF CALIFORNIA, WAS APPROVED BY THE BOARD OF SUPERVISORS OF THE COUNTY OF FRESNO AT A REGULAR MEETING HELD ON THE 13<sup>th</sup> DAY OF September, 2012 BY ITS RESOLUTION No. 12-312

FILED IN THE OFFICE OF THE CLERK TO THE BOARD OF SUPERVISORS THIS 13<sup>th</sup> DAY OF September, 2012

*Quintana Lopez*  
CLERK TO THE BOARD OF SUPERVISORS  
OF THE COUNTY OF FRESNO

FILED THIS 10<sup>th</sup> DAY OF Sept, 2012, AT THE HOUR OF 2:49 O'CLOCK P.M. IN BOOK 113 PAGE(S) 72, 73, 74  
IN THE OFFICE OF THE COUNTY RECORDER IN THE COUNTY OF FRESNO, STATE OF CALIFORNIA.

*Ornella*  
DEPUTY RECORDER  
FRESNO COUNTY RECORDER

THE LINES AND DIMENSIONS OF EACH LOT OR PARCEL SHOWN ON THIS DIAGRAM SHALL BE THOSE LINES AND DIMENSIONS AS SHOWN ON THE FRESNO COUNTY ASSESSOR'S MAP FOR THOSE PARCELS LISTED

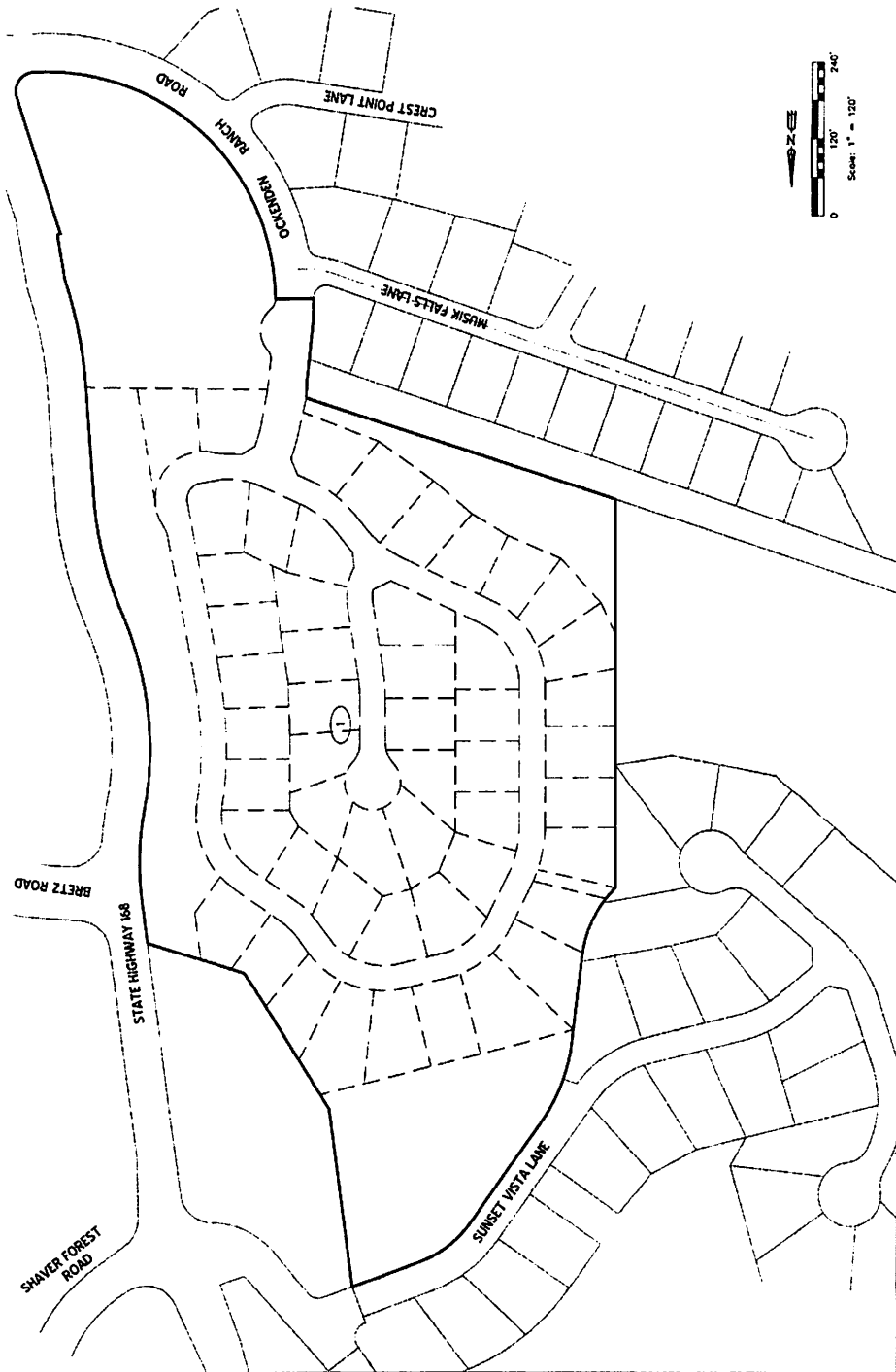
THE FRESNO COUNTY ASSESSOR'S MAP SHALL GOVERN FOR ALL DETAIL CONCERNING THE LINES AND DIMENSIONS OF SUCH LOTS AND PARCELS.

THE BOARD OF SUPERVISORS OF THE COUNTY OF FRESNO APPROVED THE ORIGINAL BOUNDARY MAP OF THE DISTRICT, ENDED MAP OF PROPOSED BOUNDARIES OF COMMUNITY FACILITIES DISTRICT NO. 2006-01 (POLICE PROTECTION SERVICES) OF THE COUNTY OF FRESNO, STATE OF CALIFORNIA, AND HIGHWAY CODE, ON APRIL 1, 2006 IN BOOK 41 AT PAGES 80 AND 81 OF MAPS OF ASSESSMENT AND COMMUNITY FACILITIES DISTRICTS, IN THE OFFICE OF THE COUNTY RECORDER OF THE COUNTY OF FRESNO, STATE OF CALIFORNIA, AS INSTRUMENT NO. 2006008894.

19 Exhibit (cont'd)

ANNEXATION MAP NO. 7A OF  
COMMUNITY FACILITIES DISTRICT NO. 2006-01 (POLICE PROTECTION SERVICES),  
COUNTY OF FRESNO, CALIFORNIA

SITE 2



LEGEND

- TRACT 5890 BOUNDARY/CFD BOUNDARY
- TRACT 5990 LOT LINES
- ASSESSMENT NUMBER

ASAP No	ASSESSOR'S PARCEL No.	SITF No.	TRACT MAP No.
1	130-031-48	2	5990



Drawn by: [unclear]  
Plot date: 5/4/2017

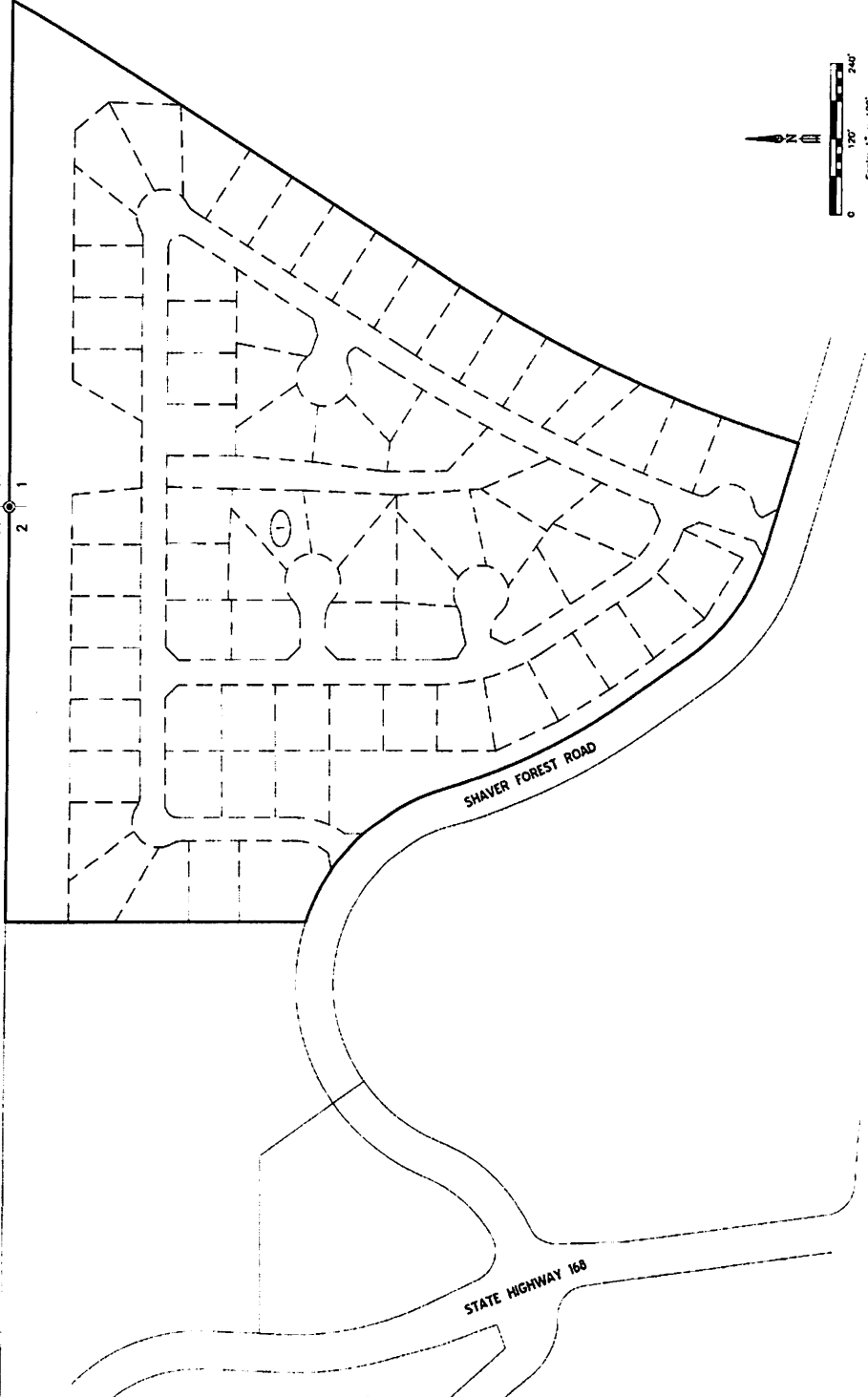
14

# Exhibit C (cont'd)

ANNEXATION MAP NO. 7A OF  
COMMUNITY FACILITIES DISTRICT NO. 2006-01 (POLICE PROTECTION SERVICES),  
COUNTY OF FRESNO, CALIFORNIA

## SITE 3

35 36  
2 1



### LEGEND

- BOUNDARY/CTD BOUNDARY
- - - LOT LINES
- ASSESSMENT NUMBER

ASMT. No.	ASSESSOR'S PARCEL No.	SITE No.	TRACT MAP No.
1	130-031-39	3	5991

Reference: C:\projects\assmnt\area 8\130-031-39\06090.dwg  
Plot date: 6/29/2012

## EXHIBIT D

### Mello-Roos Escalation Factor Tax Calculation For Fiscal Year 2017-18 Countywide CFD No. 2006-01 Single Family

CPI for Current Period April 2017	268.896
<b>less:</b> CPI for Previous Period -April 2016	259.386
<hr/> Index Point Change	<hr/> 9.510
<hr/> Divide by Previous Period CPI (April 2016)	<hr/> 259.386
<hr/> Equals Annual Escalation Factor	<hr/> 3.666%
Plus 3%	3.000%
	<hr/> 6.666%
Less: Escalation Adjustment	-4.299%
	<hr/> 2.367%
Base FY 2016-17 (BAI#31, 07/12/16)	\$ 675.28
Escalation (Base X Escalation factor of 2.367%)	\$ 15.99
<hr/> <b>Base plus Escalation</b>	<hr/> <b>\$ 691.27</b>

Single Family dwelling Tax

Sources: CPI calculated using data from:

[www.bls.gov/CPI](http://www.bls.gov/CPI)

CPI-Urban Wage Earners and Clerical Workers for San Francisco/Oakland/San Jose, CA - 06/06/17

Base FY 2016-17 obtained from BAI #31, 07/12/16

## EXHIBIT D

**Mello-Roos Escalation Factor Tax Calculation**  
**For Fiscal Year 2017-18**  
**Countywide CFD No. 2006-01**  
Multi Family

CPI for Current Period April 2017	268.896
<b>less:</b> CPI for Previous Period -April 2016	259.386
Index Point Change	9.510
Divide by Previous Period CPI (April 2016)	259.386
Equals Annual Escalation Factor	3.666%
Plus 3%	3.000%
	6.666%
Less: Escalation Adjustment	-4.299%
	2.367%
Base FY 2016-17 (BAI#31, 07/12/16)	\$ 507.97
Escalation (Base X Escalation factor of 2.367%)	\$ 12.02
<b>Base plus Escalation</b>	<b>\$ 519.99</b>

**Multi family dwelling tax**

Sources: CPI calculated using data from: [www.bls.gov/CPI](http://www.bls.gov/CPI)

CPI-Urban Wage Earners and Clerical Workers for San Francisco/Oakland/San Jose, CA - 06/06/17

Base FY 2016-17 obtained from BAI #31, 07/12/16

**EXHIBIT E**

**COUNTYWIDE CFD NO. 2006-01**

**FY 2017-18**

**Escalation Factor Adjustment Calculation**

**Single Family Dwelling**

		Annual Escalation Factor					
CPI	April 2016	259.386	Apr 2015	252.875	Apr 2014	250.085	
CPI	April 2017	268.896	Apr 2016	259.386	Apr 2015	252.875	
Index Point Change from Prior Year		9.510 (Apr - Apr)		6.511 (Apr - Apr)		2.790 (Apr - Apr)	
		3.666% CPI %		2.575% CPI %		1.116% CPI %	
		3.000%		3.000%		3.000% +	
<b>Cumulative Annual Escalation Factor</b>	<b>16.357%</b>	<b>6.666% Annual Escalation Factor</b>		<b>5.575% Annual Escalation Factor</b>		<b>4.116% Annual Escalation Factor</b>	

		Actual Costs (Sal & Benefits)					
Estimate	2015-16	\$ 136,167.00	2014-15	\$ 132,643.72	2013-14	\$ 127,626.60	
	2016-17	\$ 143,615.69	2015-16	\$ 136,167.00	2014-15	\$ 132,643.72	
		\$ 7,448.69		\$ 3,523.28		\$ 5,017.12	
		5.470%		2.656%		3.931%	
<b>Cumulative Increase</b>	<b>12.058%</b>	<b>5.470% Increase</b>		<b>2.656% Increase</b>		<b>3.931% Increase</b>	

If the Cumulative Increase is less than Cumulative Annual Escalation Factor, then the difference thereof shall be the amount of the Escalation Factor Adjustment  
 If the Cumulative Increase is equal to or greater than the Cumulative Annual Escalation Factor, then the amount of the Escalation Factor Adjustment shall be zero.

Base FY 2016-17 (BAI#31, 07/12/16)	\$	675.28
Annual Escalation Factor %		6.666%
Annual Escalation Factor Adjustment %		-4.299%
		2.367%
Annual Escalation	\$	15.99
Base + Escalation	\$	691.27

**FY 2017-18 Special Tax Rate-Single Family Dwelling**

Sources: CPI calculated using data from: [www.bls.gov/CPI](http://www.bls.gov/CPI)  
 CPI-Urban Wage Earners and Clerical Workers for San Francisco/Oakland/San Jose, CA - 06/06/17  
 Base FY 2016-17 obtained from BAI #31, 07/12/16

## EXHIBIT E

### COUNTYWIDE CFD NO. 2006-01 FY 2017-18 Escalation Factor Adjustment Calculation Multi Family dwelling

		Annual Escalation Factor				
CPI	April 2013	259.386	Apr 2012	252.875	Apr 2011	250.085
CPI	April 2014	268.896	Apr 2013	259.386	Apr 2012	252.875
Index Point Change from Prior Year		9.510 (Apr - Apr)	6.511 (Apr - Apr)		2.790 (Apr - Apr)	
		3.666% CPI %	2.575% CPI %		1.116% CPI %	
		3.000%	3.000%		3.000% +	
<hr/>						
Cumulative Annual Escalation Factor	16.357%	6.666% Annual Escalation Factor		5.575% Annual Escalation Factor		4.116% Annual Escalation Factor

		Actual Costs (Sal & Benefits)				
		ESTIMATE				
Estimate	2015-16	\$ 136,167.00	2014-15	\$ 132,643.72	2013-14	\$ 127,626.60
	2016-17	\$ 143,615.69	2015-16	\$ 136,167.00	2014-15	\$ 132,643.72
		\$ 7,448.69	\$ 3,523.28		\$ 5,017.12	
		5.470%	2.656%		3.931%	
<hr/>						
Cumulative Increase	12.058%	5.470% Increase		2.656% Increase		3.931% Increase

If the Cumulative Increase is less than Cumulative Annual Escalation Factor, then the difference thereof shall be the amount of the Escalation Factor Adjustment  
 If the Cumulative Increase is equal to or greater than the Cumulative Annual Escalation Factor, then the amount of the Escalation Factor Adjustment shall be zero.

Base FY 2016-17 (BAI#31, 07/12/16)	\$ 507.97
Annual Escalation Factor %	6.666%
Annual Escalation Factor Adjustment %	-4.299%
	2.367%
Annual Escalation	\$ 12.02
Base + Escalation	\$ 519.99

**FY 2017-18 Special Tax Rate-Multiple Family Dwelling**