

BEFORE THE BOARD OF SUPERVISORS  
OF THE COUNTY OF FRESNO  
STATE OF CALIFORNIA

**RESOLUTION ADOPTING AND LEVYING THE SPECIAL TAX FOR DEVELOPED PROPERTIES  
WITHIN COMMUNITY FACILITIES DISTRICT NO. 2006-01 (POLICE PROTECTION SERVICES)  
COUNTY OF FRESNO, INCLUDING ITS ANNEXATION TERRITORIES, FOR FISCAL YEAR 2020-21**

WHEREAS, the Countywide Community Facilities District (“CFD”) is comprised of the original CFD 2006-01 and its associated annexation territories nos. 1A, 2A, 1B, 3A, 7A, 8A, 8B, 9A, and 10A (collectively, the “District”)<sup>1</sup>;

WHEREAS, under County Ordinance No. 06-010 for the original Community Facilities District No. 2006-01, County Ordinance No. 06-014 for Annexation Territory No. 1A, County Ordinance No. 06-021 for Annexation Territory 2A, County Ordinance No. 07-046 for Annexation Territory No. 1B, County Ordinance No. 08-031 for Annexation Territory No. 3A, County Ordinance No. 12-014 for Annexation Territory No. 7A, County Ordinance No. 15-002 for Annexation Territory No. 8A, County Ordinance No. 15-004 for Annexation Territory No. 8B, County Ordinance No. 17-015 for Annexation Territory No. 9A, and County Ordinance No. 19-014 for Annexation Territory No. 10A, the Board of Supervisors (this “Board”) of the County of Fresno, or its designee, is authorized by ordinance, resolution or by other action if permitted by applicable law to establish the specific amounts of the Special Tax to levy on each Developed Property, referred to below, within the District for each County fiscal year;

WHEREAS, as provided in the Special Tax Rate and Method of Apportionment of the District, which is Exhibit B of each of the forgoing County Ordinances, the CFD Administrator annually shall calculate the rates of the Special Tax based on the Special Tax Rate and Method of Apportionment of the District;

---

<sup>1</sup> Each annexation territory is designated as “Annexation Territory No. [specify number, e.g., 1A, 2A, 1B, 3A, 7A, 8A, 8B, 9A, or 10A respectively] of Community Facilities District No. 2006-01 (Police Protection Services) of the County of Fresno. For the ease of reference in this resolution, such annexation territories are referred to by their respective annexation territory numbers only (e.g., 1A, 2A, 1B, 3A, 7A, 8A, 8B, 9A, or 10A respectively).

1           WHEREAS, the CFD Administrator duly calculated the specific maximum rates of the Special  
2 Tax, as set forth in Exhibit A to this resolution, pursuant to the Special Tax Rate and Method of  
3 Apportionment of the District, with respect to the District for County Fiscal Year 2020-21;

4           WHEREAS, that calculation by the CFD Administrator of the specific maximum rate of the  
5 Special Tax is shown in Exhibit D to this resolution and was based, in part, on the Annual Escalation  
6 Factor, as defined in the Special Tax Rate and Method of Apportionment of the District;

7           WHEREAS, the CFD Administrator, in calculating the specific maximum of the Special Tax,  
8 determined that the Escalation Factor Adjustment as defined in the Special Tax Rate and Method of  
9 Apportionment of the District, must be analyzed for the District for the County FY 2020-2021, as shown  
10 in Exhibit E;

11           WHEREAS, the CFD Administrator determined that since the cumulative increase of actual  
12 costs is greater than the cumulative annual escalation factor the Escalation Factor Adjustment should  
13 be zero percent in respect to the District for County FY 2020-2021, and therefore, the Annual  
14 Escalation Factor should not be affected by that Escalation Factor Adjustment for the District for County  
15 FY 2020-21;

16           WHEREAS, the rates and amounts calculated by the CFD Administrator do not exceed any  
17 rates or amounts allowed pursuant to the Special Tax Rate and Method of Apportionment of the  
18 District;

19           WHEREAS, the Annual Escalation Factor is not a new tax, but an inflationary adjustment  
20 established in the Special Tax Rate and Method of Apportionment of the District, which was approved  
21 by the qualified electors (i.e., qualified landowner voters) of the District, and therefore the County is not  
22 legally required under California Constitution, Articles XIII C or XIII D, which are included in "Proposition  
23 218," or under any other law, to obtain the approval from any of the qualified electors of the District with  
24 respect to any of the matters that are the subject of this resolution;

25           WHEREAS, the CFD Administrator duly determined that, as of June 1, 2020, 398 Taxable  
26 Properties within the District were Developed Residential Properties, 397 of which contained one Unit  
27 each and one of which contained two Units, for a total of 399 Residential Property Units;

1           WHEREAS, accordingly, the CFD Administrator prepared a certified list of all parcels in the  
2 District that are subject to the Special Tax levy (“CFD Administrator’s Certified List”) as follows: (a) the  
3 CFD Administrator identified those 398 Developed Residential Properties within the District for County  
4 Fiscal Year 2020-21, pursuant to the Special Tax Rate and Method of Apportionment of the District;  
5 and (b) the specific amount(s) of the Special Tax, which are at the maximum rate(s), respectively, of the  
6 Special Tax, all of which is set forth in Exhibit B to this resolution;

7           WHEREAS, a boundary map of the District is shown in Exhibit C to this resolution;

8           WHEREAS, those 398 Developed Residential Properties within the District for County Fiscal  
9 Year 2020-21 are, under the Special Tax Rate and Method of Apportionment of the District, subject to  
10 the levy of the Special Tax of the District for County Fiscal Year 2020-21;

11           WHEREAS, all capitalized terms used in this resolution are defined in the Special Tax Rate and  
12 Method of Apportionment of the District, unless otherwise defined in this resolution;

13           NOW THEREFORE, BE IT RESOLVED, FOUND, AND DETERMINED:

14           1.       All of the recitals above are true and correct.

15           2.       The CFD Administrator duly calculated the specific maximum rates of such  
16 Special Tax, as set forth in Exhibit A, pursuant to the Special Tax Rate and Method of  
17 Apportionment of the District, above, with respect to the District for Fiscal Year 2020-21.

18           3.       The rates and amounts calculated by the CFD Administrator do not exceed any rates or  
19 amounts allowed under the Special Tax Rate and Method of Apportionment of the District.

20           4.       The Annual Escalation Factor is not a new tax, but rather, an inflationary adjustment  
21 established in the Special Tax Rate and Method of Apportionment of the District, which was approved  
22 by the qualified electors (i.e., qualified landowner voters) of the District, and therefore the County is not  
23 legally required under California Constitution, Articles XIII C or XIII D, which are included in “Proposition  
24 218,” or under any other law, to obtain the approval from any of the qualified electors of the District with  
25 respect to any of the matters that are the subject of this resolution.



1           5.       The Board hereby determines, approves, authorizes, establishes, and adopts the  
2 maximum rates for the Special Tax, as set forth in Exhibit A, with respect to the District for Fiscal Year  
3 2020-21.

4           6.       The CFD Administrator duly determined the Developed Properties and the specific  
5 amounts of the Special Tax, as set forth in Exhibit B, under the Special Tax Rate and Method of  
6 Apportionment of the District, above, with respect to the District for Fiscal Year 2020-21.

7           7.       The specific amounts of the Special Tax to be levied on each Developed Property, shall  
8 be levied at the maximum rates of the Special Tax, as set forth in Exhibit A, as applicable for the land  
9 use class and description of property (as defined in the Special Tax Rate and Method of Apportionment  
10 of the District), within the District for County Fiscal Year 2020-21.

11          8.       The Board hereby accepts, approves, and adopts the CFD Administrator's Certified List  
12 stating that there are 398 Developed Residential Properties within the District, 397 of which contain one  
13 Unit each and one of which contains two Units, for a total of 399 Residential Property Units, as set forth  
14 in Exhibit B, for County Fiscal Year 2020-21, and therefore, this Board does hereby levy the Special  
15 Tax in the specific amounts, as further set forth in Exhibit B, on all such Developed Properties within the  
16 District, as further set forth in Exhibit B, as applicable for land use class and description of property (as  
17 defined in the Special Tax Rate and Method of Apportionment of the District), for County Fiscal Year  
18 2020-21.

19          9.       The Clerk of the Board promptly shall file this resolution, or a certified copy, with the  
20 Auditor-Controller/Treasurer-Tax Collector, but not later than August 10, 2020 (unless the Auditor-  
21 Controller/Treasurer-Tax Collector gives prior written consent to receive this resolution, or a certified  
22 copy, at a later date, in which case this resolution, or a certified copy, shall be promptly filed with the  
23 Auditor-Controller/Treasurer-Tax Collector not later than August 28, 2020).

24          10.       The Clerk of the Board, the CFD Administrator, and the Auditor-Controller/Treasurer-Tax  
25 Collector are each individually authorized to take all necessary actions to carry out this resolution to the  
26 fullest intent provided in this resolution.

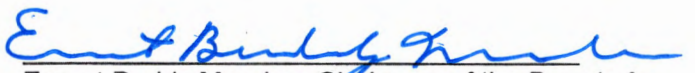
27          11.       This resolution is effective immediately upon its adoption by this Board.  
28



1 BE IT FURTHER RESOLVED, that this resolution shall take effect immediately upon its  
2 adoption by this Board.

3  
4  
5  
6  
7  
8  
9 THE FOREGOING, was passed and adopted by the following vote of the Board of Supervisors  
10 of the County of Fresno this 7th day of July, 2020, to wit:

- 11  
12 AYES: Supervisors Brandau, Magsig, Mendes, Pacheco, Quintero  
13 NOES: None  
14 ABSENT: None  
15 ABSTAINED: None

16   
Ernest Buddy Mendes, Chairman of the Board of  
Supervisors of the County of Fresno

17  
18 **ATTEST:**  
Bernice E. Seidel  
19 Clerk of the Board of Supervisors  
County of Fresno, State of California

20 By: Susan Bishop  
21 Deputy

**Exhibit A**

**County Wide CFD No. 2006-01; Annexation 1A, Annexation 2A, Annexation 1B,  
Annexation 3A, Annexation 7A, Annexation 8A, Annexation 8B, and  
Annexation 9A**

**Special Tax for  
FY 2020-21 Developed Property**

Land Use Class 1, Residential Property.....	\$768.53
Land Use Class 2, Multi-Family Property.....	\$578.11

**Note:** If the proposed special tax includes an odd number of cents, then the amount of the tax collected will be slightly different. This is due to the Auditor-Controller/Treasurer-Tax Collector's statutory process for collection, in which an odd number may not be entered on the tax roll because the amount must be divisible by two (for two payment installments). Pursuant to Revenue and Taxation Code section 2152.5, the odd cent will be dropped to make an even number that will then be the actual amount collected. This will result in the total special tax collected being a few dollars lower than the proposed amount that goes to the Board.

**EXHIBIT B**

**Countywide, CFD No. 2006-01  
(Including annexation territories 1A, 1B, 2A, 3A, 7A, 8A, 8B, 9A)  
Certified List of All Parcels in the District Subject to Special Tax Levy**

I, Thomas Trester, Sheriff's Administrative Services Director, am the duly appointed designee of the Sheriff's Office of the County of Fresno, the CFD Administrator for Community Facilities District No. 2006-01 (Police Protection Services) County of Fresno, including any annexation territories (collectively, the "District"), and hereby state and certify, as follows:

1. The boundary map of the District that is attached to this certificate is true and complete.
2. After carefully and diligently conducting a review of the County of Fresno's records concerning the District, making other inquiries and investigations as I reasonably deem appropriate, and receiving certain information certified from the Department of Public Works and Planning, I have determined that, as of May 10, 2019, the following parcels are Developed Properties of Land Use Class 1, Residential Property, and for that reason are subject to the levy of the Special Tax of the District for County Fiscal Year 2019-20, in the following specific amount(s):

<u>No. Developed Property</u>	<u>Parcel Number</u>	<u>CFD Title</u>	<u>Tract No.</u>	<u>Amount of Special Tax to be levied on each parcel for County Fiscal Year 2019-20</u>
1.	043-250-08S	Caruthers	5401	\$768.53
2.	043-250-09S	Caruthers	5401	\$768.53
3.	043-250-10S	Caruthers	5401	\$768.53
4.	043-250-11S	Caruthers	5401	\$768.53
5.	043-250-12S	Caruthers	5401	\$768.53
6.	043-250-13S	Caruthers	5401	\$768.53
7.	043-250-14S	Caruthers	5401	\$768.53
8.	043-250-16S	Caruthers	5401	\$768.53
9.	043-250-17S	Caruthers	5401	\$768.53
10.	043-250-18S	Caruthers	5401	\$768.53
11.	043-250-19S	Caruthers	5401	\$768.53
12.	043-250-20S	Caruthers	5401	\$768.53
13.	043-250-22S	Caruthers	5401	\$768.53
14.	043-250-23S	Caruthers	5401	\$768.53
15.	043-250-24S	Caruthers	5401	\$768.53
16.	043-250-25S	Caruthers	5401	\$768.53
17.	043-250-26S	Caruthers	5401	\$768.53
18.	043-250-27S	Caruthers	5401	\$768.53
19.	043-250-32S	Caruthers	5401	\$768.53
20.	043-250-33S	Caruthers	5401	\$768.53
21.	043-250-34S	Caruthers	5401	\$768.53
22.	043-250-36S	Caruthers	5401	\$768.53
23.	043-250-37S	Caruthers	5401	\$768.53
24.	043-250-38S	Caruthers	5401	\$768.53
25.	043-250-40S	Caruthers	5401	\$768.53
26.	043-250-41S	Caruthers	5401	\$768.53
27.	043-250-42S	Caruthers	5401	\$768.53
28.	043-250-43S	Caruthers	5401	\$768.53
29.	043-250-45S	Caruthers	5401	\$768.53
30.	043-250-46S	Caruthers	5401	\$768.53
31.	043-250-47S	Caruthers	5401	\$768.53
32.	043-250-48S	Caruthers	5401	\$768.53
33.	043-250-49S	Caruthers	5401	\$768.53
34.	043-250-50S	Caruthers	5401	\$768.53
35.	043-250-51S	Caruthers	5401	\$768.53
36.	043-250-52S	Caruthers	5401	\$768.53
37.	043-250-53S	Caruthers	5401	\$768.53
38.	043-250-54S	Caruthers	5401	\$768.53
39.	043-250-55S	Caruthers	5401	\$768.53
40.	043-250-56S	Caruthers	5401	\$768.53
41.	043-250-57S	Caruthers	5401	\$768.53
42.	043-250-59S	Caruthers	5401	\$768.53
43.	043-250-60S	Caruthers	5401	\$768.53
44.	043-250-61S	Caruthers	5401	\$768.53
45.	043-250-62S	Caruthers	5401	\$768.53
46.	043-250-63S	Caruthers	5401	\$768.53
47.	043-250-64S	Caruthers	5401	\$768.53
48.	043-250-65S	Caruthers	5401	\$768.53
49.	043-250-66S	Caruthers	5401	\$768.53
50.	053-500-01S	Countryside Estates	5504	\$768.53
51.	053-500-02S	Countryside Estates	5504	\$768.53





127.	053-515-06S	Country Meadows	5397	\$768.53
128.	053-516-01S	Country Meadows	5397	\$768.53
129.	053-516-02S	Country Meadows	5397	\$768.53
130.	053-516-03S	Country Meadows	5397	\$768.53
131.	053-516-05S	Country Meadows	5397	\$768.53
132.	136-350-26	Timber Ridge	5485	\$768.53
133.	136-350-29	Timber Ridge	5485	\$768.53
134.	136-350-30	Timber Ridge	5485	\$768.53
135.	136-360-25	Timber Ridge	5485	\$768.53
136.	136-360-27	Timber Ridge	5485	\$768.53
137.	136-360-29	Timber Ridge	5485	\$768.53
138.	136-360-30	Timber Ridge	5485	\$768.53
139.	136-371-09	Quartz Mountain	5276	\$768.53
140.	136-371-15	Quartz Mountain	5276	\$768.53
141.	136-371-17	Quartz Mountain	5276	\$768.53
142.	136-372-12	Quartz Mountain	5276	\$768.53
143.	136-372-24	Quartz Mountain	5276	\$768.53
144.	136-373-02	Quartz Mountain	5276	\$768.53
145.	136-373-05	Quartz Mountain	5276	\$768.53
146.	136-375-05	Quartz Mountain	5276	\$768.53
147.	136-375-06	Quartz Mountain	5276	\$768.53
148.	136-375-07	Quartz Mountain	5276	\$768.53
149.	136-375-12	Quartz Mountain	5276	\$768.53
150.	136-375-13	Quartz Mountain	5276	\$768.53
151.	136-375-17	Quartz Mountain	5276	\$768.53
152.	136-375-19	Quartz Mountain	5276	\$768.53
153.	136-375-22	Quartz Mountain	5276	\$768.53
154.	136-375-26	Quartz Mountain	5276	\$768.53
155.	136-375-30	Quartz Mountain	5276	\$768.53
156.	136-375-33	Quartz Mountain	5276	\$768.53
157.	136-390-13	Tract No. 5990	5990	\$768.53
158.	136-390-21	Tract No. 5990	5990	\$768.53
159.	136-390-22	Tract No. 5990	5990	\$768.53
160.	136-390-24	Tract No. 5990	5990	\$768.53
161.	136-390-25	Tract No. 5990	5990	\$768.53
162.	136-390-26	Tract No. 5990	5990	\$768.53
163.	136-390-27	Tract No. 5990	5990	\$768.53
164.	136-390-28	Tract No. 5990	5990	\$768.53
165.	136-400-44	Tract No. 5990	5990	\$768.53
166.	136-400-45	Tract No. 5990	5990	\$768.53
167.	136-400-46	Tract No. 5990	5990	\$768.53
168.	300-630-01S	Granite Crest	4870	\$768.53
169.	300-630-02S	Granite Crest	4870	\$768.53
170.	300-630-03S	Granite Crest	4870	\$768.53
171.	300-630-04S	Granite Crest	4870	\$768.53
172.	300-630-05S	Granite Crest	4870	\$768.53
173.	300-630-06S	Granite Crest	4870	\$768.53
174.	300-630-07S	Granite Crest	4870	\$768.53
175.	300-630-08S	Granite Crest	4870	\$768.53
176.	300-630-09S	Granite Crest	4870	\$768.53
177.	300-630-10S	Granite Crest	4870	\$768.53
178.	300-630-12S	Granite Crest	4870	\$768.53
179.	300-630-13S	Granite Crest	4870	\$768.53
180.	300-630-15S	Granite Crest	4870	\$768.53
181.	300-630-16S	Granite Crest	4870	\$768.53
182.	300-630-17S	Granite Crest	4870	\$768.53
183.	300-630-18S	Granite Crest	4870	\$768.53
184.	300-630-19S	Granite Crest	4870	\$768.53
185.	300-630-20S	Granite Crest	4870	\$768.53
186.	300-630-21S	Granite Crest	4870	\$768.53
187.	300-630-22S	Granite Crest	4870	\$768.53
188.	300-630-23S	Granite Crest	4870	\$768.53
189.	300-630-24S	Granite Crest	4870	\$768.53
190.	300-630-25S	Granite Crest	4870	\$768.53
191.	300-641-01S	Granite Crest	4870	\$768.53
192.	300-641-02S	Granite Crest	4870	\$768.53
193.	300-641-03S	Granite Crest	4870	\$768.53
194.	300-641-04S	Granite Crest	4870	\$768.53
195.	300-641-05S	Granite Crest	4870	\$768.53
196.	300-641-06S	Granite Crest	4870	\$768.53
197.	300-641-07S	Granite Crest	4870	\$768.53
198.	300-641-08S	Granite Crest	4870	\$768.53
199.	300-641-09S	Granite Crest	4870	\$768.53
200.	300-641-10S	Granite Crest	4870	\$768.53
201.	300-641-11S	Granite Crest	4870	\$768.53







352.	300-684-25S	Granite Crest	4870	\$768.53
353.	309-390-01	Red Hawk	5126	\$768.53
354.	309-390-02	Red Hawk	5126	\$768.53
355.	309-390-03	Red Hawk	5126	\$768.53
356.	309-390-04	Red Hawk	5126	\$768.53
357.	309-390-05	Red Hawk	5126	\$768.53
358.	309-390-06	Red Hawk	5126	\$768.53
359.	309-390-07	Red Hawk	5126	\$768.53
360.	309-390-08	Red Hawk	5126	\$768.53
361.	309-390-09	Red Hawk	5126	\$768.53
362.	309-390-10	Red Hawk	5126	\$768.53
363.	309-390-11	Red Hawk	5126	\$768.53
364.	309-390-12	Red Hawk	5126	\$768.53
365.	309-390-13	Red Hawk	5126	\$768.53
366.	309-390-14	Red Hawk	5126	\$768.53
367.	309-390-15	Red Hawk	5126	\$768.53
368.	309-390-18	Red Hawk	5126	\$768.53
369.	309-390-19	Red Hawk	5126	\$768.53
370.	309-390-20	Red Hawk	5126	\$768.53
371.	309-390-21	Red Hawk	5126	\$768.53
372.	309-390-22	Red Hawk	5126	\$768.53
373.	309-390-23	Red Hawk	5126	\$768.53
374.	309-390-24	Red Hawk	5126	\$768.53
375.	309-390-25	Red Hawk	5126	\$768.53
376.	309-390-26	Red Hawk	5126	\$768.53
377.	309-390-27	Red Hawk	5126	\$768.53
378.	309-390-28	Red Hawk	5126	\$768.53
379.	309-390-29	Red Hawk	5126	\$768.53
380.	309-390-30	Red Hawk	5126	\$768.53
381.	309-390-31	Red Hawk	5126	\$768.53
382.	309-400-01	Red Hawk	5126	\$768.53
383.	309-400-02	Red Hawk	5126	\$768.53
384.	309-400-03	Red Hawk	5126	\$768.53
385.	309-400-07	Red Hawk	5126	\$768.53
386.	309-400-09	Red Hawk	5126	\$768.53
387.	309-400-13	Red Hawk	5126	\$768.53
388.	309-400-14	Red Hawk	5126	\$768.53
389.	309-400-15	Red Hawk	5126	\$768.53
390.	309-400-16	Red Hawk	5126	\$768.53
391.	309-400-17	Red Hawk	5126	\$768.53
392.	309-400-18	Red Hawk	5126	\$768.53
393.	309-410-23 (x2)	Hatfield	5334	\$1,537.06
394.	309-410-25	Hatfield	5334	\$768.53
395.	309-410-26	Hatfield	5334	\$768.53
396.	309-410-27	Hatfield	5334	\$768.53
397.	309-410-28	Hatfield	5334	\$768.53
398.	580-140-02	Chelsea Downs	5955	\$768.53
<b>TOTAL</b>				<b>\$306,643.47</b>

3. The specific amount(s) of the Special Tax, above, are at the "Adopted Rate(s)" (as that term is defined in the resolution of the Board of Supervisors to which this certificate relates) of the Special Tax of the District for such land use classification and description, all of which I have calculated according to the Special Tax Rate and Method of Apportionment of the District.
4. Each of the capitalized terms in this certificate that is not defined in this certificate has the meaning given to it in the Special Tax Rate and Method of Apportionment of the District. All documents referred to in this certificate are on file with the Sheriff-Coroner's Business Office (2200 Fresno Street, Fresno, California 93717), and are available for inspection by the public during the regular business hours of that office.

By Thomas Trester  
for *Thomas Trester*

Date: 6-9-2020

**Note:** If the proposed special tax includes an odd number of cents, then the amount of the tax collected will be slightly different. This is due to the Auditor-Controller/Treasurer-Tax Collector's statutory process for collection, in which an odd number may not be entered on the tax roll because the amount must be divisible by two (for two payment installments). Pursuant to Revenue and Taxation Code section 2152.5, the odd cent will be dropped to make an even number that will then be the actual amount collected. This will result in the total special tax collected being a few dollars lower than the proposed amount that goes to the Board.

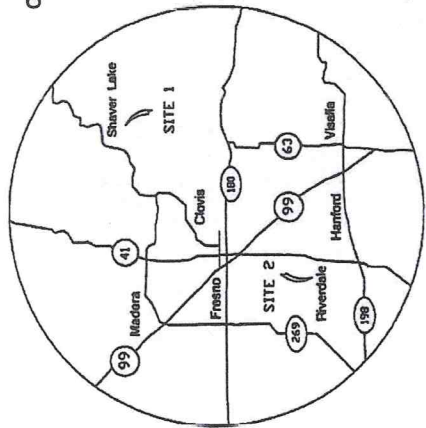
80

Exhibit C

SHEET 1 OF 2

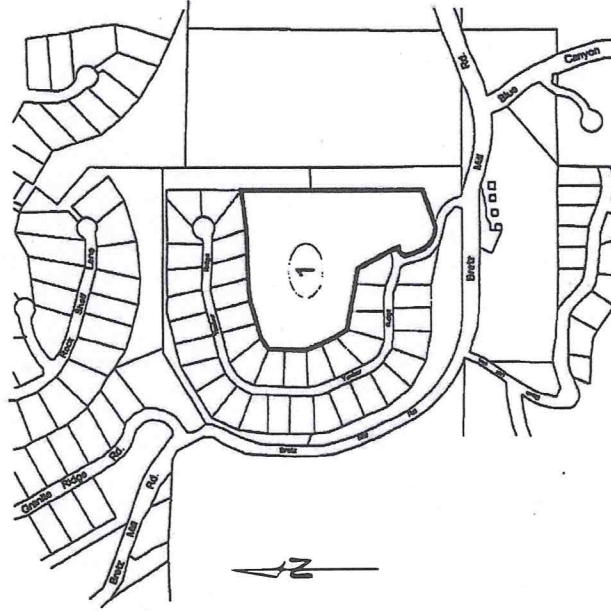
MAP OF PROPOSED BOUNDARIES OF  
COMMUNITY FACILITIES DISTRICT NO. 2006-01 (POLICE PROTECTION SERVICES)

COUNTY OF FRESNO  
STATE OF CALIFORNIA



VICINITY MAP

SITE 1



FILED IN THE OFFICE OF THE CLERK TO THE BOARD OF SUPERVISORS THIS  
DAY OF \_\_\_\_\_, 2006.

I HEREBY CERTIFY THAT THE WITHIN MAP IS CORRECT BOUNDARIES OF  
COMMUNITY FACILITIES DISTRICT NO. 2006-01 (POLICE PROTECTION SERVICES)  
AS SHOWN ON THE WITHIN MAP. I AM A MEMBER OF THE BOARD OF SUPERVISORS  
OF THE COUNTY OF FRESNO AT A REGULAR MEETING HELD AT THE  
OFFICE OF THE COUNTY CLERK TO THE BOARD OF SUPERVISORS ON  
DATE OF \_\_\_\_\_, 2006.

*Gregory H. Seay*  
MEMBER OF THE BOARD OF SUPERVISORS  
COUNTY OF FRESNO  
STATE OF CALIFORNIA

I HEREBY CERTIFY THAT THE WITHIN MAP IS CORRECT BOUNDARIES OF  
COMMUNITY FACILITIES DISTRICT NO. 2006-01 (POLICE PROTECTION SERVICES)  
AS SHOWN ON THE WITHIN MAP. I AM A MEMBER OF THE BOARD OF SUPERVISORS  
OF THE COUNTY OF FRESNO AT A REGULAR MEETING HELD AT THE  
OFFICE OF THE COUNTY CLERK TO THE BOARD OF SUPERVISORS ON  
DATE OF \_\_\_\_\_, 2006.

*David A. Stinson*  
MEMBER OF THE BOARD OF SUPERVISORS  
COUNTY OF FRESNO  
STATE OF CALIFORNIA

THE LINES AND DIMENSIONS OF EACH LOT OR PARCEL SHOWN ON THIS DIAGRAM  
SHALL BE THOSE LINES AND DIMENSIONS AS SHOWN ON THE FRESNO COUNTY  
ASSESSOR'S MAPS FOR THOSE PARCELS LISTED.

THE FRESNO COUNTY ASSESSOR'S MAPS SHALL GOVERN FOR ALL DETAILS  
CONCERNING THE LINES AND DIMENSIONS OF SUCH LOTS OR PARCELS.

LEGEND

— CPTD BOUNDARY

(1) ASSESSMENT NUMBER

Assmt. No.	Assessor's Parcel No.	Site No.	Tract No.
1	130-031-88	1	5485





81

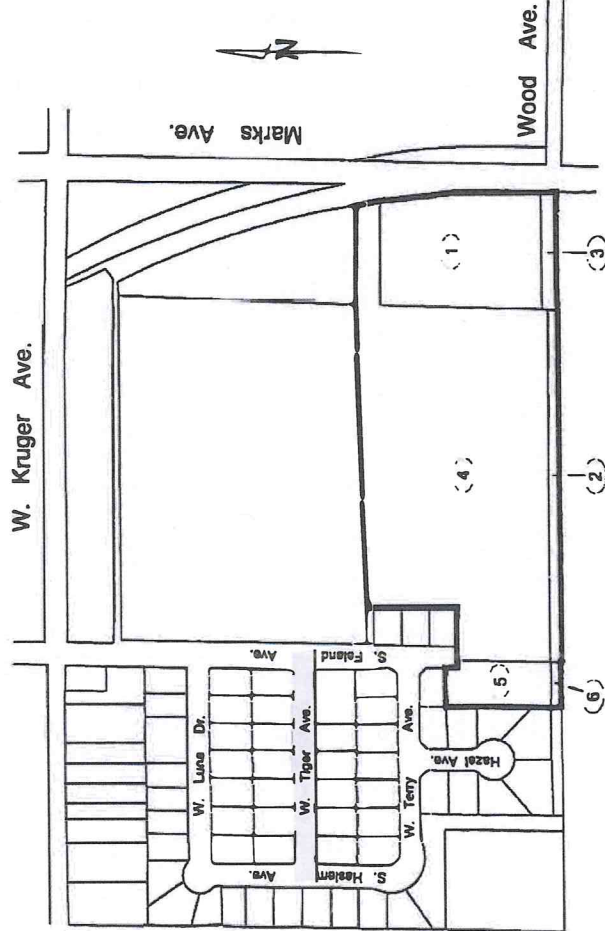
Exhibit C (cont'd)

SHEET 2 OF 2

MAP OF PROPOSED BOUNDARIES OF  
COMMUNITY FACILITIES DISTRICT NO. 2006-01 (POLICE PROTECTION SERVICES)

COUNTY OF FRESNO  
STATE OF CALIFORNIA

SITE 2



LEGEND  
 ——— CTD BOUNDARY  
 (1) ASSESSMENT NUMBER

Asmt. No.	Assessor's Parcel No.	Site No.	Tract No.
1	053-380-31s	2	5504
2	053-380-65	2	5504
3	053-380-66	2	5504
4	053-380-69s	2	5504
5	053-490-26s	2	5504
6	053-490-27	2	5504





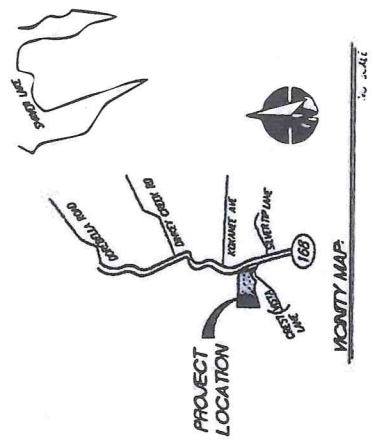
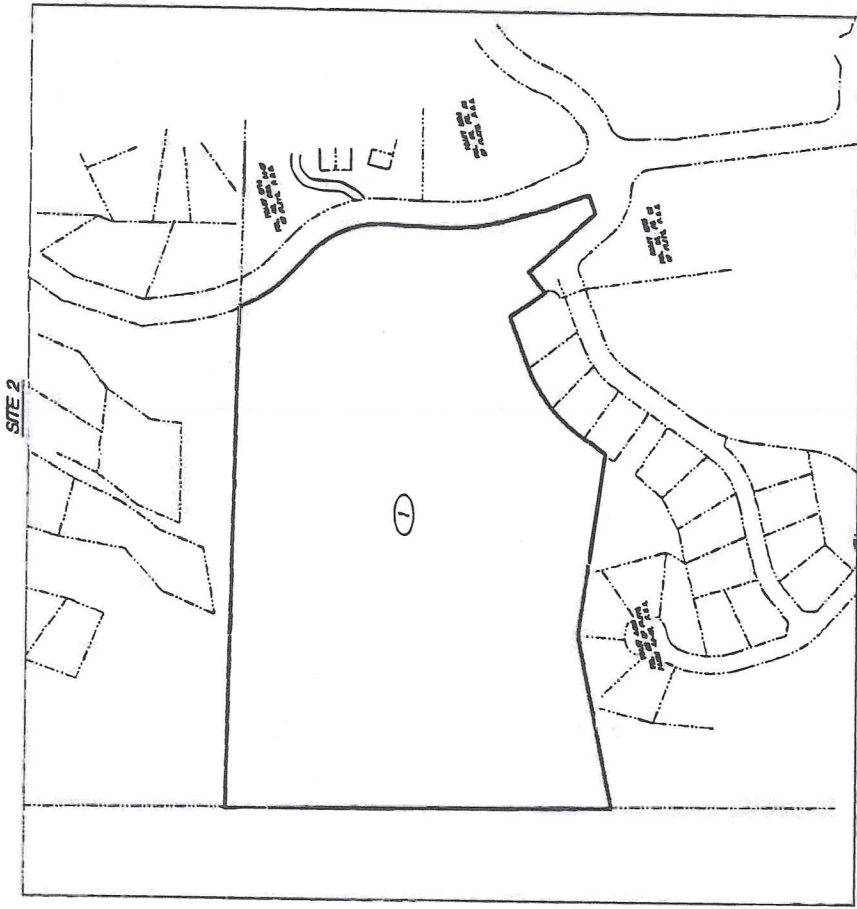
Exhibit C (cont'd)

92

SHEET 2 OF 4

MAP OF PROPOSED BOUNDARIES OF  
 COMMUNITY FACILITIES DISTRICT NO. 2006-01 ANNEXATION 1A (POLICE PROTECTION SERVICES)

COUNTY OF RESNO  
 STATE OF CALIFORNIA



LEGEND:  
 — CTD BOUNDARY  
 (1) ASSESSMENT NUMBER

Assmt. No.	Assessor's Parcel No.	Site No.	Tract No.
1	120-001-08	2	5050

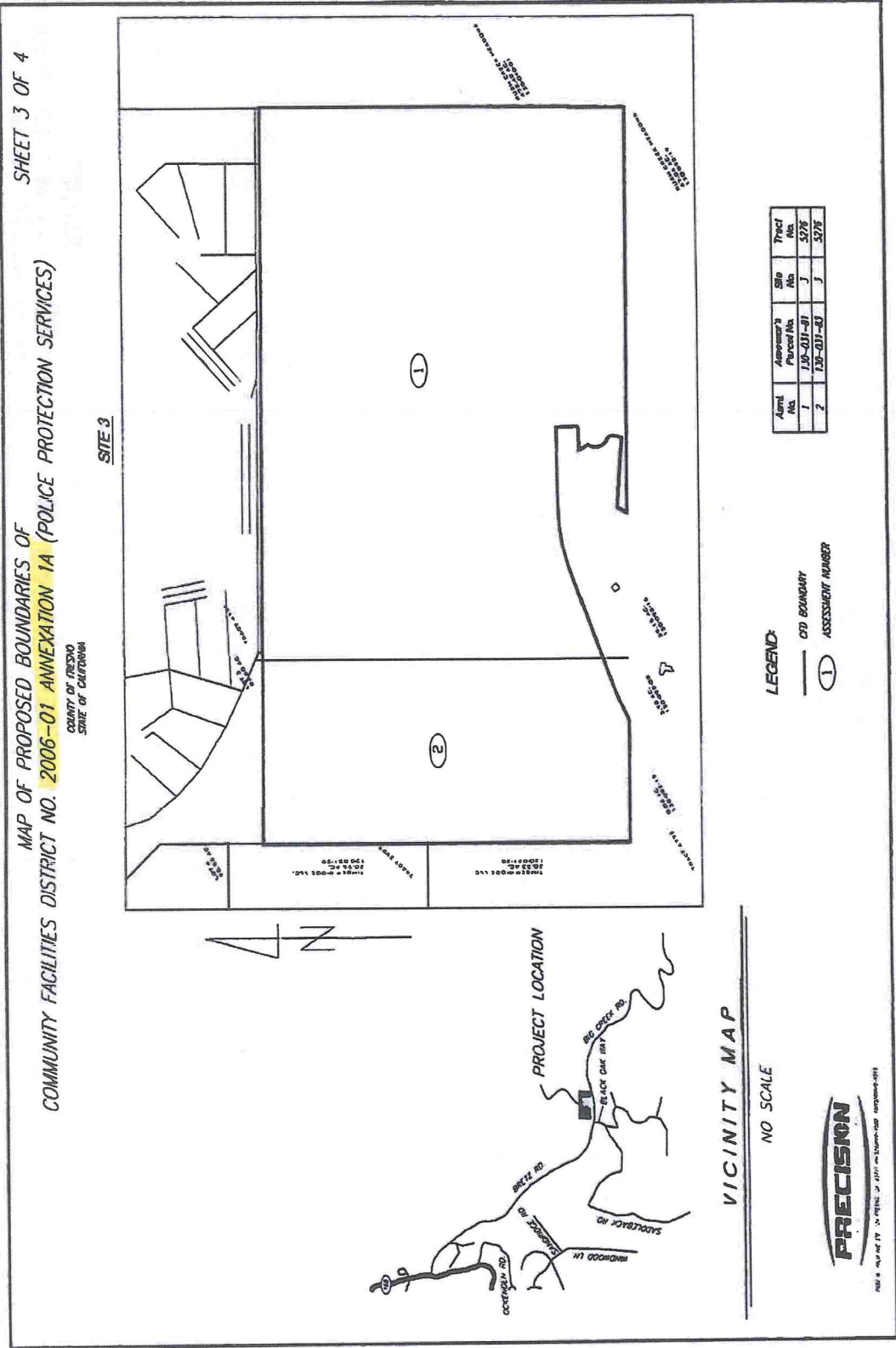


Map is prepared by the County of Resno, California, and is not to be used for any other purpose.



93

Exhibit C (cont'd)



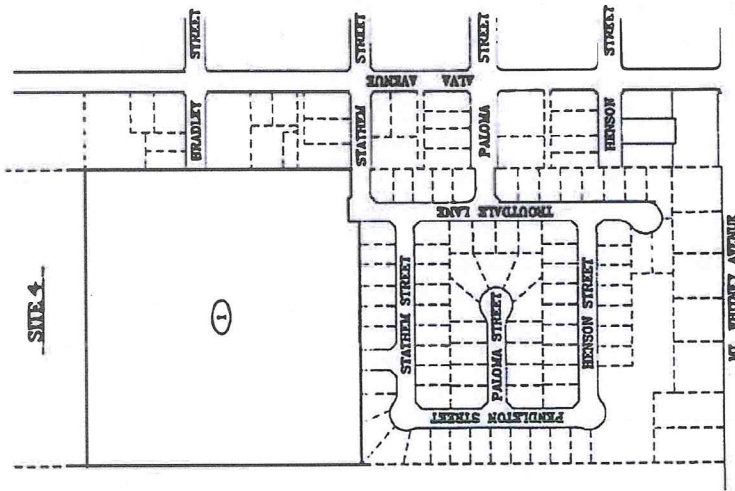
94

Exhibit (cont'd)

MAP OF PROPOSED BOUNDARIES OF COMMUNITY FACILITIES DISTRICT  
No. 2006-01 ANNEXATION 1A (POLICE PROTECTION SERVICES)

COUNTY OF FRESNO  
STATE OF CALIFORNIA

SHEET 4 OF 4



**LEGEND**  
 --- CITY BOUNDARY  
 (1) ASSESSMENT NUMBER

ASSET No.	ASSESSOR'S PARCEL No.	SITE No.	TRACT No.
1	063-442-288	4	6367



SCALE: 1"=200'  
 0 100 200 300 400 500 600  
 SCALE IN FEET

NOT BE USED FOR ANY OTHER PURPOSES

Date: MAY 18, 2006  
 Job No: 06020  
 Drawn By: AJAMES  
 Drawing No: \_\_\_\_\_

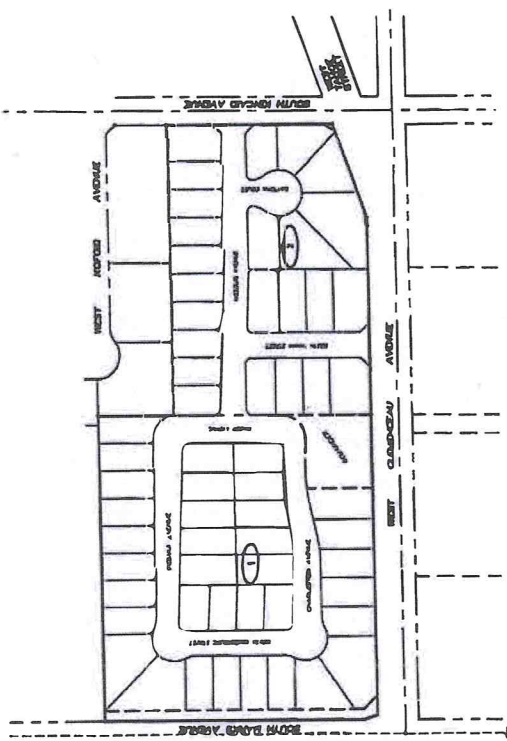
**R. W. Greenwood Associates, Inc.**  
 CIVIL ENGINEERING LAND SURVEYING  
 2258 E. Olive Avenue  
 Fresno, California 93701  
 Tel: (559) 798-1781

65

# Exhibit C (cont'd)

## MAP OF PROPOSED BOUNDARIES OF ANNEXATION MAP No. 1B OF COMMUNITY FACILITIES DISTRICT No. 2006-01 (POLICE PROTECTION SERVICES), COUNTY OF FRESNO, STATE OF CALIFORNIA

### SITE 1



**LEGEND:**

- CITY BOUNDARY
- TRACT SHOT BOUNDARY
- ASSESSMENT NUMBER

ASMT. No.	ASSESSOR'S PARCEL No.	SITE No.	TRACT No.
1	043-041-01	1	5401
2	043-041-405	1	5401



I HEREBY CERTIFY THAT THE WITHIN MAP SHOWING PROPOSED BOUNDARIES OF ANNEXATION IS CORRECT AND ACCURATE AND THAT THE SAID MAP WAS PREPARED BY THE BOARD OF SUPERVISORS OF THE COUNTY OF FRESNO AT A REGULAR MEETING HELD ON THE 14<sup>TH</sup> DAY OF August, 2007 BY ITS RESOLUTION No. 07-148.

*Devin A. Smith*  
 COUNTY CLERK

I, the undersigned, being of the legal age and of sound mind and memory, do hereby certify that the within map was prepared by me or under my direct supervision and that I am a resident of the County of Fresno, State of California.

*Devin A. Smith*  
 COUNTY CLERK

THE LINES AND BOUNDARIES OF EACH PARCEL SHOWN ON THIS MAP SHALL BE MORE EXACTLY AND ACCURATELY AS SHOWN ON THE FRESNO COUNTY ASSESSOR'S MAP FOR THOSE PARCELS LISTED.

THE FRESNO COUNTY ASSESSOR'S MAPS SHALL CONTROL FOR ALL PURPOSES IN CONNECTION WITH THE PROPOSED ANNEXATION MAP OF PROPOSED BOUNDARIES OF COMMUNITY FACILITIES DISTRICT NO. 2006-01, WHICH HAS BEEN PREPARED TO SHOW THE CITY OF FRESNO'S INTERESTS IN THE SAID PARCELS AND COMMUNITY FACILITIES DISTRICTS IN THE COUNTY OF FRESNO, STATE OF CALIFORNIA.

PREPARED BY:  
 YAMASE & ASSOCIATES, INC.  
 1500 EAST BROADWAY, SUITE 108  
 FRESNO, CALIFORNIA 93702-4478  
 PH: 558-140-2725 FAX: 558-244-9778

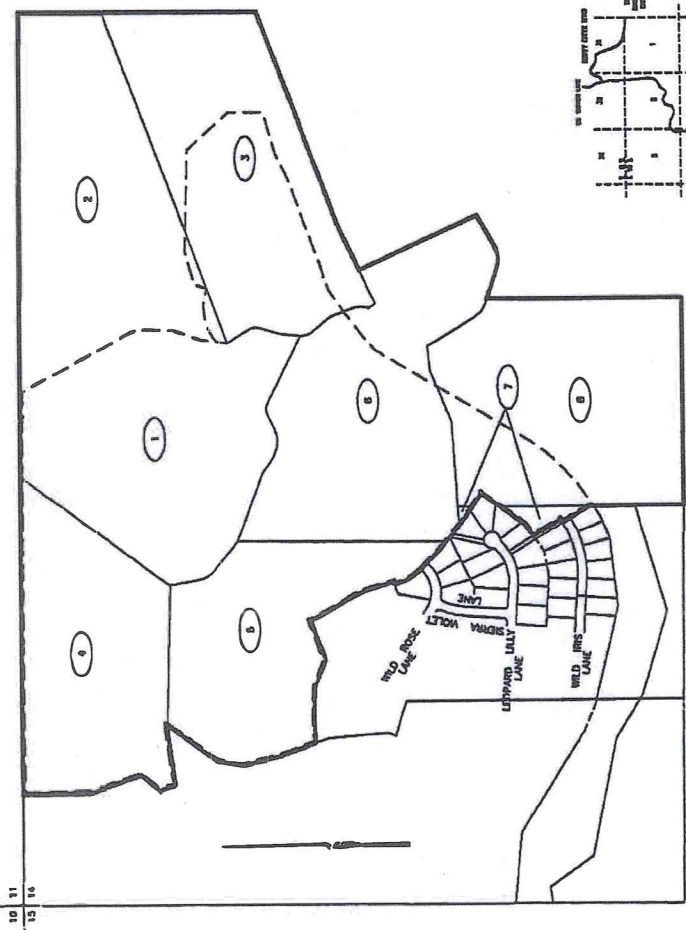


26

# Exhibit C (Cont'd)

## MAP OF PROPOSED BOUNDARIES OF COMMUNITY FACILITIES DISTRICT No. 2006-01 ANNEXATION 2A (POLICE PROTECTION SERVICES)

### SITE 1



TRACT	ASSESSMENT YEAR	TRACT NO.	TRACT AREA
1	15-150-01	1	3177
2	15-150-02	2	3177
3	15-150-03	3	3177
4	15-150-04	4	3177
5	15-150-05	5	3177
6	15-150-06	6	3177
7	15-150-07	7	3177
8	15-150-08	8	3177

- LEGEND**
- CTD BOUNDARY
  - TRACT CITY BOUNDARY
  - ① ASSESSMENT NUMBER



FILED IN THE OFFICE OF THE CLERK TO THE BOARD OF SUPERVISORS THIS  
DAY OF \_\_\_\_\_, 2006

I HEREBY CERTIFY THAT THE WITHIN MAPS BEING HEREBY PROPOSED BOUNDARIES OF  
COMMUNITY FACILITIES DISTRICT NO. 2006-01 ANNEXATION 2A (POLICE PROTECTION SERVICES)  
AS SHOWN ON THE MAPS AND AS APPROVED BY THE BOARD OF SUPERVISORS OF THE COUNTY OF FRESNO AT A REGULAR MEETING HELD ON THE  
DAY OF \_\_\_\_\_, 2006 BY ITS RESOLUTION NO.  
\_\_\_\_\_.

*Robert C. Ough*  
CLERK TO THE BOARD OF SUPERVISORS  
COUNTY OF FRESNO

ON THIS DAY OF \_\_\_\_\_, 2006, I, \_\_\_\_\_, COUNTY CLERK OF SAID  
COUNTY OF FRESNO, DO HEREBY CERTIFY THAT THE WITHIN MAPS AND AS APPROVED BY THE  
BOARD OF SUPERVISORS OF THE COUNTY OF FRESNO AT A REGULAR MEETING HELD ON THE  
DAY OF \_\_\_\_\_, 2006 BY ITS RESOLUTION NO.  
\_\_\_\_\_.

*Robert C. Ough*  
COUNTY CLERK  
COUNTY OF FRESNO

THE LINES AND DIMENSIONS OF EACH LOT OR PARCEL SHOWN ON THIS DIAGRAM  
ARE TAKEN FROM THE RECORDS OF THE COUNTY OF FRESNO, CALIFORNIA,  
ASSESSORS MAP FOR THOSE PARCELS LISTED.

THE FRESNO COUNTY ASSESSORS MAPS SHALL GOVERN FOR ALL DETAIL  
CONCERNING THE LINES AND DIMENSIONS OF SUCH LOTS AND PARCELS.

THE BOARD OF SUPERVISORS OF THE COUNTY OF FRESNO APPROVED THE ORIGINAL  
MAPS OF THE WITHIN DISTRICT NO. 2006-01 ANNEXATION 2A (POLICE PROTECTION SERVICES)  
COUNTY OF FRESNO, STATE OF CALIFORNIA, WHICH WAS FILED FOR REPLY TO  
THE COUNTY OF FRESNO, STATE OF CALIFORNIA, AS REQUIRED BY SECTION 56000  
OF THE GOVERNMENT CODE, AND THE WITHIN MAPS OF ASSESSMENT AND COMMUNITY  
FACILITIES DISTRICTS, IN THE OFFICE OF THE COUNTY CLERK OF THE COUNTY  
OF FRESNO, STATE OF CALIFORNIA, AS INSTALLED BY RESOLUTION NO. \_\_\_\_\_.

PREPARED BY  
THE COUNTY ENGINEER  
FRESNO, CALIFORNIA  
DATE: 12-15-06  
SHEET 1 OF 2

27

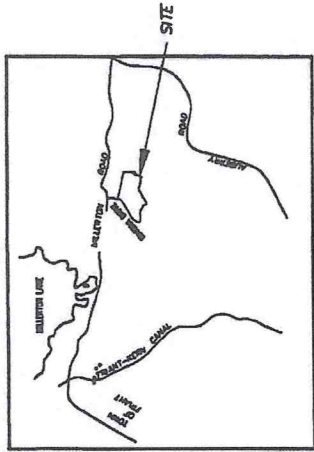
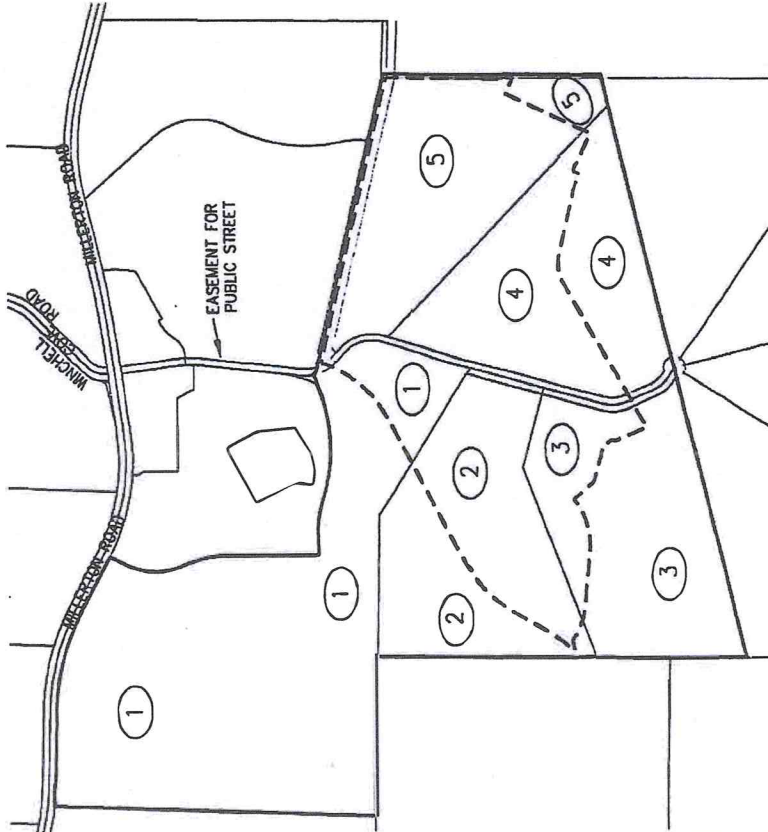
Exhibit C (cont'd)

SHEET 2 OF 2

MAP OF PROPOSED BOUNDARIES OF  
COMMUNITY FACILITIES DISTRICT NO. 2006-01 ANNEXATION 2A (POLICE PROTECTION SERVICES)

COUNTY OF FRESNO  
STATE OF CALIFORNIA

SUE2

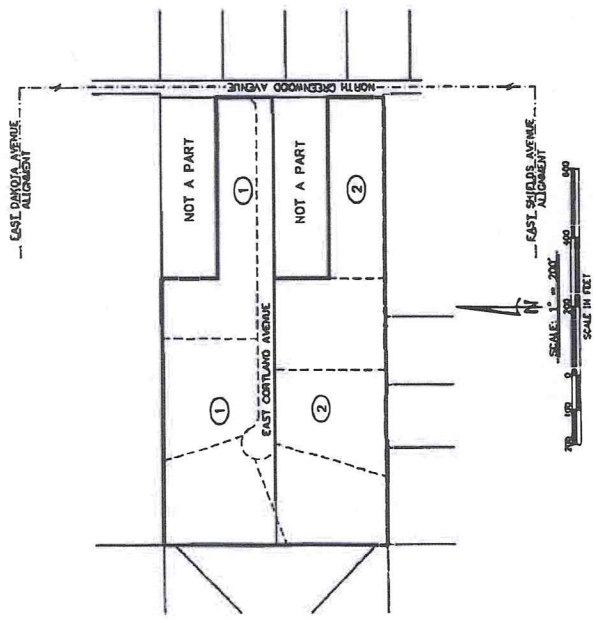


- LEGEND
- CFD BOUNDARY
  - - - TRACT 4870 BOUNDARY
  - ① ASSESSMENT NUMBER

ASMT. NO.	ASSESSOR'S PARCEL NO.	SITE NO.	TRACT NO.
1	300-340-265	2	4870
2	300-540-085	2	4870
3	300-540-085	2	4870
4	300-540-145	2	4870
5	300-540-155	2	4870

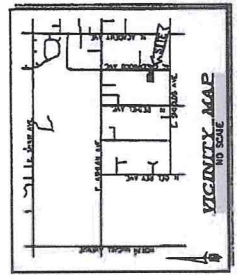
Prepared by  
**PROVOST & PRITCHARD**  
 ENGINEERING GROUP  
 206 WEST CROWWELL AVENUE  
 FRESNO, CALIFORNIA 93711-0166  
 559/489-2700 FAX 559/489-2715  
 DATE: 08/10/06  
 JOB NO.: 11640201

ANNEXATION MAP NO. 3A OF  
COMMUNITY FACILITIES DISTRICT NO. 2006-01 (POLICE PROTECTION SERVICES),  
COUNTY OF FRESNO, CALIFORNIA



ASST. ASSESSOR'S NO.	TRACT	STREETS	AREA	VAL.
1	5334	SHIELDS	100	100

LEGEND  
 TRACT 5334 BOUNDARY/OTO BOUNDARY  
 TRACT 5334 LOT LINES  
 ASSESSMENT NUMBER  
 ①



I HEREBY CERTIFY THAT THE WITHIN MAP SHOWING BOUNDARIES OF ANNEXATION MAP NO. 3A OF COMMUNITY FACILITIES DISTRICT NO. 2006-01 (POLICE PROTECTION SERVICES), COUNTY OF FRESNO, STATE OF CALIFORNIA, WAS APPROVED BY THE BOARD OF SUPERVISORS OF THE COUNTY OF FRESNO AT A REGULAR MEETING THEREOF, HELD ON THE 21<sup>ST</sup> DAY OF SEPTEMBER, 2006 BY ITS RESOLUTION NO. 2006-5453.

FILED IN THE OFFICE OF THE CLERK TO THE BOARD OF SUPERVISORS THIS 22<sup>ND</sup> DAY OF SEPTEMBER, 2006.

*[Signature]*  
 CLERK TO THE BOARD OF SUPERVISORS  
 COUNTY OF FRESNO

FILED THIS 22<sup>ND</sup> DAY OF SEPTEMBER, 2006, AT THE OFFICE OF THE CLERK TO THE BOARD OF SUPERVISORS, COUNTY OF FRESNO, STATE OF CALIFORNIA. BY *[Signature]* COUNTY RECORDER IN THE COUNTY OF FRESNO, STATE OF CALIFORNIA.

*[Signature]*  
 FRESNO COUNTY RECORDER

THE LINES AND DIMENSIONS OF EACH LOT OR PARCEL SHOWN ON THIS DIAGRAM SHALL BE THOSE LINES AND DIMENSIONS AS SHOWN ON THE FRESNO COUNTY ASSESSOR'S MAP FOR THOSE PARCELS LISTED.

THE FRESNO COUNTY ASSESSOR'S MAPS SHALL CONTROL FOR ALL DETAILS CONCERNING THE LINES AND DIMENSIONS OF SUCH LOTS AND PARCELS.

THE BOARD OF SUPERVISORS OF THE COUNTY OF FRESNO APPROVED THE ORIGINAL BOUNDARY MAP OF THE DISTRICT, ENTITLED, "MAP OF PROPOSED BOUNDARIES OF COMMUNITY FACILITIES DISTRICT NO. 2006-01 (POLICE PROTECTION SERVICES) OF THE CALIFORNIA STREETS AND HIGHWAYS CODE, ON APRIL 3, 2006, IN BOOK 41, AT PAGES 60 AND 61 OF MAPS OF ASSASSMENT AND COMMUNITY FACILITIES OF FRESNO, STATE OF CALIFORNIA, AS INSTRUMENT NO. 2006-028844.

PREPARED BY  
 R. F. GREENWOOD AND ASSOCIATES  
 CIVIL ENGINEERS AND SURVEYORS  
 1000 EAST GALT AVENUE  
 FRESNO, CALIFORNIA 93701  
 DATE: 09-22-06  
 JOB NO. 06-00000000  
 APP. NO. 06-00000000  
 SHEET NO. 1 OF 1



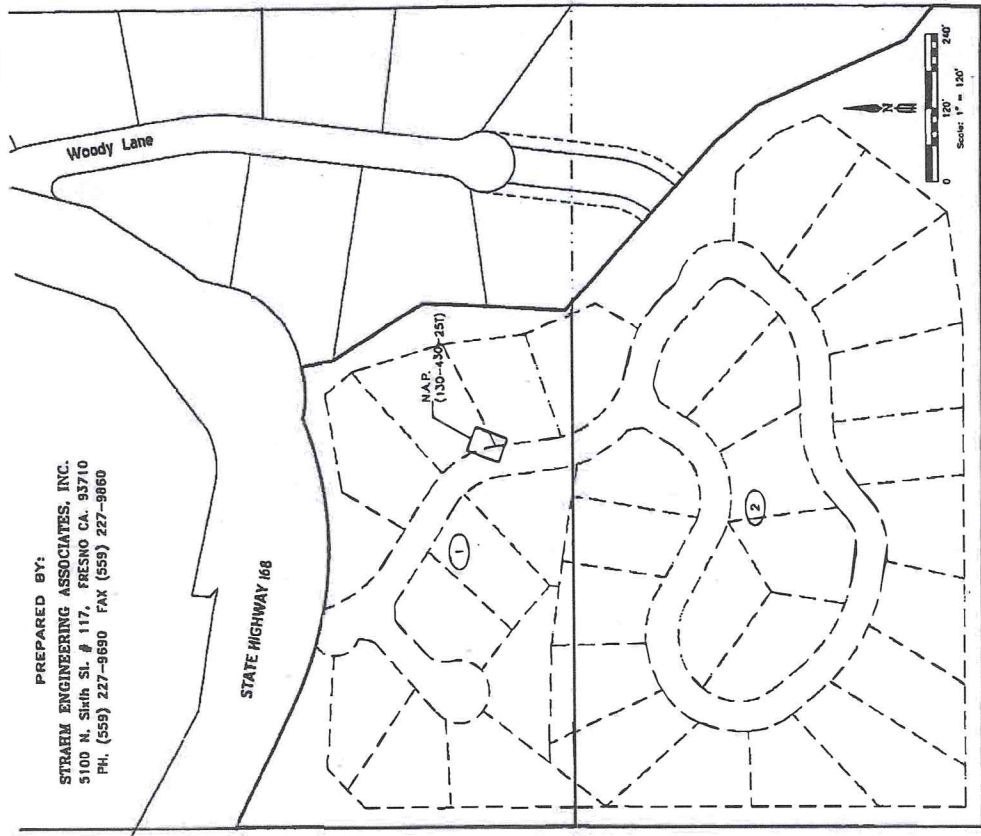
10

# Exhibit C (cont'd)

## ANNEXATION MAP NO. 7A OF COMMUNITY FACILITIES DISTRICT NO. 2006-01 (POLICE PROTECTION SERVICES), COUNTY OF FRESNO, CALIFORNIA

SITE 1

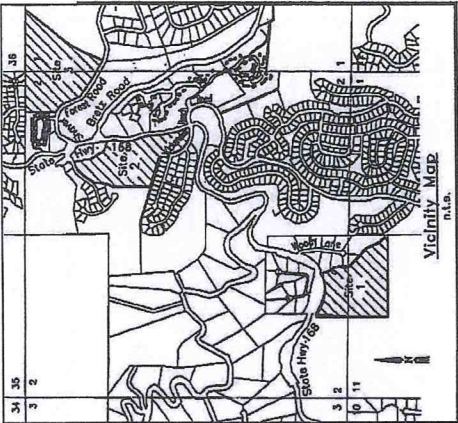
PREPARED BY:  
**STRAHM ENGINEERING ASSOCIATES, INC.**  
5100 N. Sixth St. # 117, FRESNO CA. 93710  
PH. (559) 227-9690 FAX (559) 227-9660



**LEGEND**

- TRACT 5305 BOUNDARY/CTD BOUNDARY
- TRACT 5305 LOT LINES
- (1) ASSESSMENT NUMBER
- N.A.P. NOT A PART

ASMT. No.	ASSESSOR'S PARCEL No.	SITE No.	TRACT MAP No.
1	130-430-32	1	5305
2	130-430-45	1	5305



I, HEREBY CERTIFY THAT THE WITHIN MAP SHOWING BOUNDARIES OF ANNEXATION NO. 7A OF COMMUNITY FACILITIES DISTRICT NO. 2006-01 (POLICE PROTECTION SERVICES), COUNTY OF FRESNO, STATE OF CALIFORNIA, WAS APPROVED BY THE BOARD OF SUPERVISORS OF THE COUNTY OF FRESNO AT A PUBLIC MEETING THEREOF HELD ON THE 13th DAY OF August, 2012 BY ITS RESOLUTION NO. 12-030.

FILED IN THE OFFICE OF THE CLERK TO THE BOARD OF SUPERVISORS THIS 13th DAY OF August, 2012.

*Shirley E. Oyster*  
CLERK TO THE BOARD OF SUPERVISORS  
OF THE COUNTY OF FRESNO

FILED THIS 10th DAY OF September, 2012 AT THE HOUR OF 12:00 O'CLOCK PM IN BOOK 135 (2012) PAGES 233 AND 234 OF THE MAPS OF ASSESSMENT AND COMMUNITY FACILITIES DISTRICT NO. 2006-01 (POLICE PROTECTION SERVICES) COUNTY OF FRESNO, STATE OF CALIFORNIA, IN THE OFFICE OF THE COUNTY RECORDER IN THE COUNTY OF FRESNO, STATE OF CALIFORNIA.

*[Signature]*  
DEPUTY RECORDER  
FRESNO COUNTY RECORDER

THE LINES AND DIMENSIONS OF EACH LOT OR PARCEL SHOWN ON THIS DIAGRAM SHALL BE THOSE LINES AND DIMENSIONS AS SHOWN ON THE FRESNO COUNTY ASSESSOR'S MAP FOR THOSE PARCELS LISTED.

THE FRESNO COUNTY ASSESSOR'S MAP SHALL GOVERN FOR ALL DETAIL CONCERNING THE LINES AND DIMENSIONS OF SUCH LOTS AND PARCELS.

THE BOARD OF SUPERVISORS OF THE COUNTY OF FRESNO APPROVED THE ORIGINAL BOUNDARY MAP OF THE DISTRICT BOTTLED MAP OF PROPOSED BOUNDARIES OF COMMUNITY FACILITIES DISTRICT NO. 2006-01 (POLICE PROTECTION SERVICES) COUNTY OF FRESNO, STATE OF CALIFORNIA, WHICH WAS FILED PURSUANT TO SECTION 3111 OF THE CALIFORNIA STREETS AND HIGHWAYS CODE, ON APRIL 3, 2006, IN BOOK 41, AT PAGES 80 AND 81 OF MAPS OF ASSESSMENT AND COMMUNITY FACILITIES DISTRICTS, IN THE OFFICE OF THE COUNTY RECORDER OF THE COUNTY OF FRESNO, STATE OF CALIFORNIA, AS INSTRUMENT NO. 200606894.







# Exhibit C (cont'd)

31

**ANNEXATION MAP NO. 8A OF  
COMMUNITY FACILITIES DISTRICT NO. 2006-01 (POLICE PROTECTION SERVICES),  
COUNTY OF FRESNO, CALIFORNIA**

SHEET 1 OF 1  
**SITE 1**

BK. 5, PD. 4 OF RECORD OF SURVEYS, F.C.R.  
REDWOOD PARK



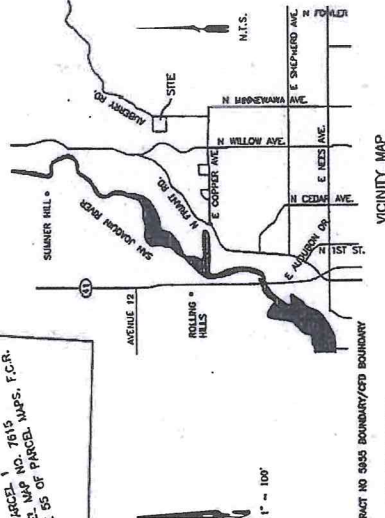
I HEREBY CERTIFY THAT THE WITHIN MAP SHOWING ACQUISITION OF ANNEXATION NO. 8A OF COMMUNITY FACILITIES DISTRICT NO. 2006-01 (POLICE PROTECTION SERVICES), COUNTY OF FRESNO, STATE OF CALIFORNIA, WAS APPROVED BY THE BOARD OF SUPERVISORS OF THE COUNTY OF FRESNO ON THIS 11th DAY OF FEBRUARY 2015, IN ACCORDANCE WITH RESOLUTION NO. 2015-011.

FILED IN THE OFFICE OF THE CLERK TO THE BOARD OF SUPERVISORS THIS 11th DAY OF FEBRUARY 2015.  
*Dee Leoff*  
CLERK TO THE BOARD OF SUPERVISORS  
COUNTY OF FRESNO

FILED THIS 11th DAY OF FEBRUARY 2015 AT THE HOUR OF 11:55 O'CLOCK A.M. IN BOOK 511 PAGE(S) 51 OF THE MAPS OF ASSESSMENT AND COMMUNITY FACILITIES DISTRICTS AND AS DISTRICTS IN THE COUNTY OF FRESNO, STATE OF CALIFORNIA, IN THE OFFICE OF THE COUNTY ASSESSOR.  
PAUL TRUETT, CPA, COUNTY ASSESSOR-REGISTRAR  
OF THE COUNTY OF FRESNO  
DEPUTY ASSESSOR  
FRESNO COUNTY RECORDER

THE LINES AND DIMENSIONS OF EACH LOT OR PARCEL SHOWN ON THIS PROGRAM SHALL BE THOSE LINES AND DIMENSIONS AS SHOWN ON THE FRESNO COUNTY ASSESSOR'S MAP FOR THESE PARCELS LISTED.  
THE FRESNO COUNTY ASSESSOR'S MAP SHALL GOVERN FOR ALL DETAIL CONCERNING THE LINES AND DIMENSIONS OF SUCH LOTS AND PARCELS.  
THE BOUNDARIES OF THE COUNTY OF FRESNO APPROVED THE ORIGINAL BOUNDARY MAP OF THE DISTRICT, ENTITLED "MAP OF PROPOSED BOUNDARIES OF COMMUNITY FACILITIES DISTRICT NO. 2006-01 (POLICE PROTECTION SERVICES), COUNTY OF FRESNO, STATE OF CALIFORNIA, IN BOOK 511, PAGE 51, AT PAGES 40 AND 41 OF MAPS OF ASSESSMENT AND COMMUNITY FACILITIES DISTRICTS, IN THE OFFICE OF THE COUNTY ASSESSOR OF THE COUNTY OF FRESNO, STATE OF CALIFORNIA, IS HEREBY NO. 2006-011.

PARCEL 3  
TRACT NO. 2705  
F.C.R.  
PARCEL MAP NO. 17615  
PAGE 55 OF PARCEL MAPS, F.C.R.  
BOOK 60, PAGE 55 OF PARCEL MAPS, F.C.R.



**LEGEND**

- TRACT NO 9855 BOUNDARY/STY BOUNDARY
- TRACT NO 5855 LOT LINES
- ① ASSESSMENT NUMBER

AMT. NO.	ASSESSOR'S PARCEL NO.	SITE NO.	TRACT MAP NO.
1	300-020-13	1	3853

**GARY C. GIANNETTA**  
CIVIL ENGINEERING & LAND SURVEYING  
1110 W. STREET  
FRESNO, CA 93728  
(509) 241-3930

# Exhibit C (cont'd)

## EXHIBIT A ANNEXATION MAP NO. 88 OF COMMUNITY FACILITIES DISTRICT NO. 2006-01 (POLICE PROTECTION SERVICES), COUNTY OF FRESNO, STATE OF CALIFORNIA

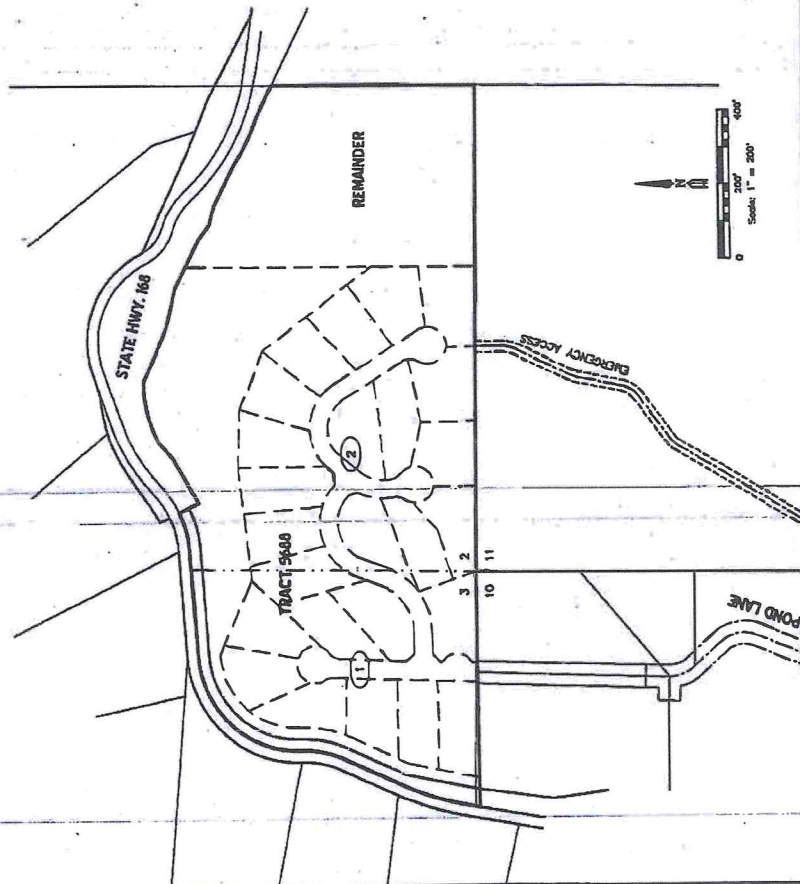
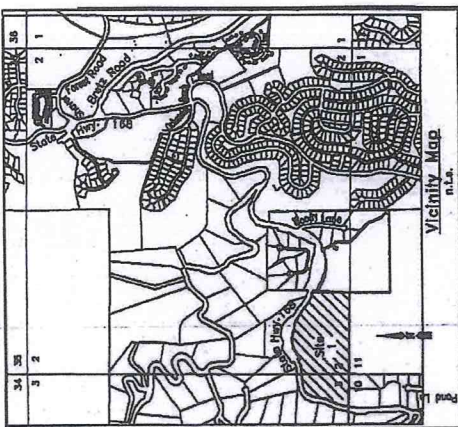
PREPARED BY:  
STRABEK ENGINEERING ASSOCIATES, INC.  
5100 N. SHAW ST. # 117, FRESNO CA. 93710  
PH. (559) 227-9690 FAX (559) 227-8860

SITE #1

### LEGEND

- TRACT 5888 AND REMAINDER/CFD BOUNDARY
- TRACT 5888 LOT LINES
- ASSESSMENT NUMBER

ASMT. No.	ASSESSOR'S PARCEL No.	SITE No.	TRACT MAP No.
2	130-430-01	1	5888
	130-430-2B	1	5888 & REMAINDER



I, HEREBY CERTIFY THAT THE WITHIN MAP SHOWING BOUNDARIES OF ANNEXATION NO. 88 OF COMMUNITY FACILITIES DISTRICT NO. 2006-01 (POLICE PROTECTION SERVICES), COUNTY OF FRESNO, STATE OF CALIFORNIA, WAS APPROVED BY THE BOARD OF SUPERVISORS OF THE COUNTY OF FRESNO AT A REGULAR MEETING THEREOF HELD ON THE 15<sup>TH</sup> DAY OF JANUARY, 2015 BY ITS RESOLUTION NO. 2015-01-01.

FILED 15<sup>TH</sup> DAY OF JANUARY 2015  
CLERK TO THE BOARD OF SUPERVISORS OF THE COUNTY OF FRESNO

*Janice C. D. [Signature]*  
CLERK TO THE BOARD OF SUPERVISORS OF THE COUNTY OF FRESNO

FILED THIS 15<sup>TH</sup> DAY OF JANUARY 2015 AT THE HOUR OF 9:38 O'CLOCK A.M. IN BOOK 2015-01-01, PAGE(S) 1-2  
FACILITIES DISTRICTS AND AS INSTRUMENT NO. 2006-01-01 OF THE COUNTY OF FRESNO, STATE OF CALIFORNIA

*Paul Debus [Signature]*  
DEPUTY RECORDER  
FRESNO COUNTY RECORDER

THE LINES AND DIMENSIONS OF EACH LOT OR PARCEL SHOWN ON THIS DIAGRAM SHALL BE THOSE LINES AND DIMENSIONS AS SHOWN ON THE FRESNO COUNTY ASSESSOR'S MAP FOR THOSE PARCELS LISTED.

THE FRESNO COUNTY ASSESSOR'S MAP SHALL GOVERN FOR ALL DETAIL CONCERNING THE LINES AND DIMENSIONS OF SUCH LOTS AND PARCELS.

THE BOARD OF SUPERVISORS OF THE COUNTY OF FRESNO APPROVED THE ORIGINAL BOUNDARY MAP OF THE DISTRICT OF POLICE PROTECTION SERVICES OF COMMUNITY FACILITIES DISTRICT NO. 2006-01 (POLICE PROTECTION SERVICES) COUNTY OF FRESNO, STATE OF CALIFORNIA, WHICH WAS FILED PURSUANT TO SECTION 3111 OF THE CALIFORNIA STREETS AND HIGHWAYS CODE, ON APRIL 3, 2006, IN BOOK 41, AT PAGES 80 AND 81 OF MAPS OF ASSESSMENT AND COMMUNITY FACILITIES DISTRICTS IN THE OFFICE OF THE COUNTY RECORDER OF THE COUNTY OF FRESNO, STATE OF CALIFORNIA, AS INSTRUMENT NO. 2006006894S.



01

Exhibit C (cont'd)

**ANNEXATION MAP NO. 9A OF COMMUNITY FACILITIES DISTRICT NO. 2006-01  
(POLICE PROTECTION SERVICES), COUNTY OF FRESNO, STATE OF CALIFORNIA**

IN THE COUNTY OF FRESNO, STATE OF CALIFORNIA

SITE 1

**LEGEND**

- PROPOSED ANNEXATION TO CTD
- EXISTING CTD NO. 2006-01
- LIMITS OF TRACT 4988
- PROPOSED LOTS FOR TRACT 4988
- ① ASSESSMENT NUMBER



PREPARED BY:  
GATEWAY DESIGNING, INC.  
5811 E. PROCESSION AVE.  
FRESNO, CA 93727

ASMT.	ASSESSOR'S PARCEL NO.	SITE NO.	TRACT MAP NO.
1	300-340-11-S	1	4988

FILE THIS MAP WITH THE BOARD OF SUPERVISORS OF THE COUNTY OF FRESNO, STATE OF CALIFORNIA, AT THE OFFICE OF THE CLERK TO THE BOARD OF SUPERVISORS THIS 10<sup>th</sup> DAY OF August, 2012.

FILE THIS MAP WITH THE BOARD OF SUPERVISORS OF THE COUNTY OF FRESNO, STATE OF CALIFORNIA, AT THE OFFICE OF THE CLERK TO THE BOARD OF SUPERVISORS THIS 10<sup>th</sup> DAY OF August, 2012.

*[Signature]*  
PAUL BOTTES CPA  
CLERK TO THE BOARD OF SUPERVISORS  
OF THE COUNTY OF FRESNO

*[Signature]*  
FRESNO COUNTY RECORDER

THE LINES AND DIMENSIONS OF EACH LOT OR PARCEL SHOWN ON THIS DIAGRAM SHALL BE THOSE LINES AND DIMENSIONS AS SHOWN ON THE FRESNO COUNTY ASSESSOR'S MAP FOR THOSE PARCELS LISTED.

THE FRESNO COUNTY ASSESSOR'S MAP SHALL GOVERN FOR ALL DETAIL CONCERNING THE LINES AND DIMENSIONS OF SUCH LOTS AND PARCELS.

THE BOARD OF SUPERVISORS OF THE COUNTY OF FRESNO APPROVED THE ORIGINAL BOUNDARY MAP OF THE DISTRICT, ENTITLED "MAP OF PROPOSED BOUNDARIES OF COMMUNITY FACILITIES DISTRICT NO. 2006-01 (POLICE PROTECTION SERVICES), COUNTY OF FRESNO, STATE OF CALIFORNIA" ON APRIL 1, 2006, IN BOOK 41, AT PAGES 60 AND 61 OF THE PUBLIC RECORDS OF THE COUNTY OF FRESNO.

THE BOARD OF SUPERVISORS OF THE COUNTY OF FRESNO APPROVED THE ORIGINAL BOUNDARY MAP OF THE DISTRICT, ENTITLED "MAP OF PROPOSED BOUNDARIES OF COMMUNITY FACILITIES DISTRICT NO. 2006-01 (POLICE PROTECTION SERVICES), COUNTY OF FRESNO, STATE OF CALIFORNIA" ON APRIL 1, 2006, IN BOOK 41, AT PAGES 60 AND 61 OF THE PUBLIC RECORDS OF THE COUNTY OF FRESNO.

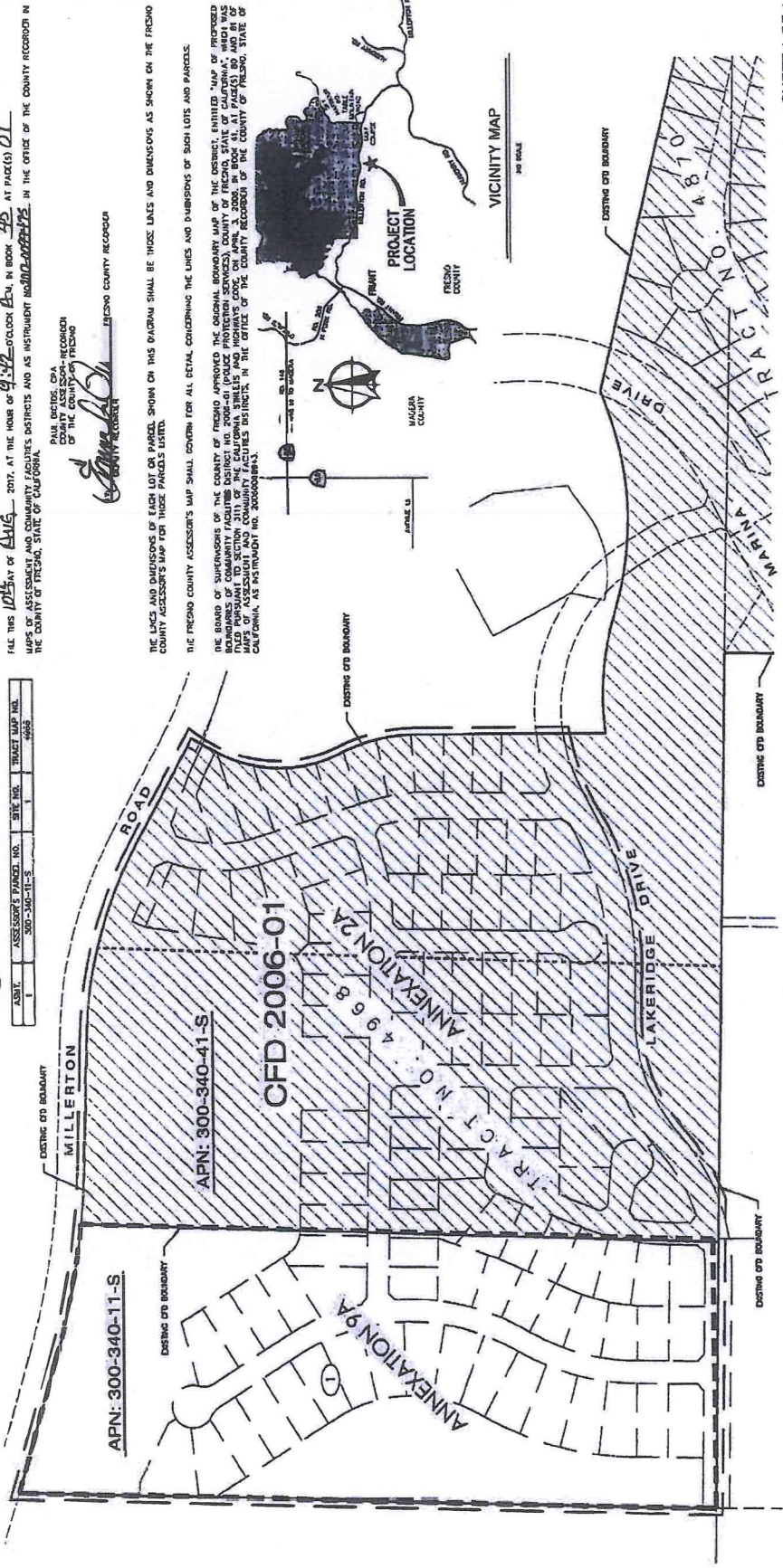








Exhibit C

**EXHIBIT A**

**ANNEXATION MAP NO. 10A OF COMMUNITY FACILITIES DISTRICT NO. 2006-01  
(POLICE PROTECTION SERVICES), COUNTY OF FRESNO, STATE OF CALIFORNIA**

IN THE COUNTY OF FRESNO, STATE OF CALIFORNIA

**SITE #2**

I, COUNTY CLERK OF THE COUNTY OF FRESNO, DO HEREBY CERTIFY THAT THE ABOVE MAP SHOWS THE BOUNDARIES OF THE POLICE PROTECTION SERVICES DISTRICT NO. 2006-01 AS SHOWN ON THE MAP OF THE COUNTY OF FRESNO, STATE OF CALIFORNIA AS APPROVED BY THE BOARD OF SUPERVISORS OF THE COUNTY OF FRESNO AT A REGULAR MEETING HELD ON THE 28<sup>th</sup> DAY OF APRIL, 2016 AT ITS REGULAR MEETING ROOM, 115-138

FILED IN THE OFFICE OF THE CLERK OF SUPERVISORS THIS 29<sup>th</sup> DAY OF APRIL, 2016

*Shirley C. Smith*  
County Clerk  
OF THE COUNTY OF FRESNO

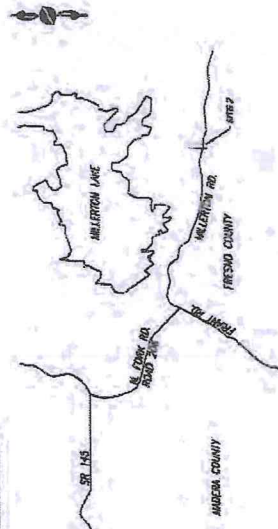
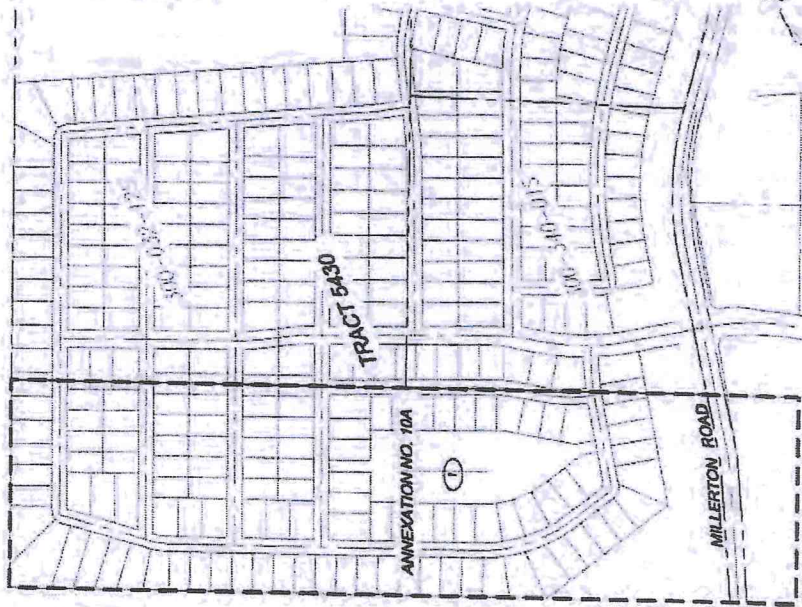
FILE THIS MAP OF APRIL 28, 2016, AT THE HOUR OF 3:47, IN BOOK 145, AT PAGE 59  
MAP OF ANNEXATION AND COMMUNITY FACILITIES DISTRICT NO. 2006-01 IN THE OFFICE OF THE COUNTY CLERK OF THE COUNTY OF FRESNO, STATE OF CALIFORNIA  
EXEMPT FROM 582 FRES. P.S. 66-875.3(a)(1)(c)

FILED IN THE  
COUNTY ARCHIVE-RECORDS  
OF THE COUNTY OF FRESNO

BY *Joseph Valenzuela*  
COUNTY ARCHIVE-RECORDS

THE LINES AND DIMENSIONS OF EACH LOT OR PARCEL SHOWN IN THIS MAP SHALL BE THESE LINES AND DIMENSIONS AS SHOWN ON THE FRESNO COUNTY ASSessor'S MAP FOR THOSE PARCELS LISTED IN THE FRESNO COUNTY ASSessor'S MAP SHALL CEASE FOR ALL LEGAL PURPOSES FOR THE LINES AND DIMENSIONS OF SUCH LOTS AND PARCELS.

THE BOARD OF SUPERVISORS OF THE COUNTY OF FRESNO APPROVED THE ORIGINAL BOUNDARY MAP OF THE DISTRICT, SIGNED MAP OF FRESNO BOUNDARIES OF COMMUNITY FACILITIES DISTRICT NO. 2006-01 POLICE PROTECTION SERVICES, COUNTY OF FRESNO, STATE OF CALIFORNIA, WHICH WAS FILED PURSUANT TO SECTION 5111 OF THE CALIFORNIA STATUTES AND ADMINISTRATIVE CODE, ON APRIL 3, 2006 AT 10:00 A.M. AT THE OFFICE OF THE COUNTY CLERK OF THE COUNTY OF FRESNO, STATE OF CALIFORNIA, AS SET FORTH IN SAID DOCUMENT.



**VICINITY MAP**  
NOT TO SCALE

SCALE 1" = 200'

 PLANNING & SURVEYING & CIVIL ENGINEERING 1924 S STREET, FRESNO, CALIFORNIA 93731 TEL: 559-449-4500 FAX: 559-449-4575 WWW.PRECISIONCIVIL.NET	PROJECT TITLE MILLERTON SPECIFIC PLAN	PROJECT NO. FRESNO GROUP 1385 W. HERDON SUITE 110 FRESNO, CA 93711 (559) 440-8308	SHEET DESCRIPTION ANNEXATION MAP NO. 10A SITE 2	CITY OF FRESNO	COUNTY OF FRESNO
	PROJECT NO. FRESNO GROUP 1385 W. HERDON SUITE 110 FRESNO, CA 93711 (559) 440-8308	SHEET NO. 1 OF 15	CHECKED BY DATE	DRAWN BY DATE	SHEET NUMBER 1 OF 15











Exhibit C

**EXHIBIT A**

**ANNEXATION MAP NO. 10A OF COMMUNITY FACILITIES DISTRICT NO. 2006-01  
(POLICE PROTECTION SERVICES), COUNTY OF FRESNO, STATE OF CALIFORNIA  
IN THE COUNTY OF FRESNO, STATE OF CALIFORNIA**

**SITE #15**

A PLAT CERTIFICATE HAS BEEN FILED WITH THE COUNTY CLERK'S OFFICE IN THE COUNTY OF FRESNO, STATE OF CALIFORNIA, AND THE COUNTY CLERK HAS APPROVED THE MAP OF SUPERVISORS OF THE COUNTY OF FRESNO AT A PUBLIC HEARING HELD ON THE 24th DAY OF APRIL, 2016, AT 10:00 AM IN THE OFFICE OF THE COUNTY CLERK, 1000 N. MARKET STREET, FRESNO, CALIFORNIA 93701.

THE PLAT IS THE PROPERTY OF SUPERVISORS OF THE COUNTY OF FRESNO, STATE OF CALIFORNIA.

*John L. ...*  
COUNTY CLERK

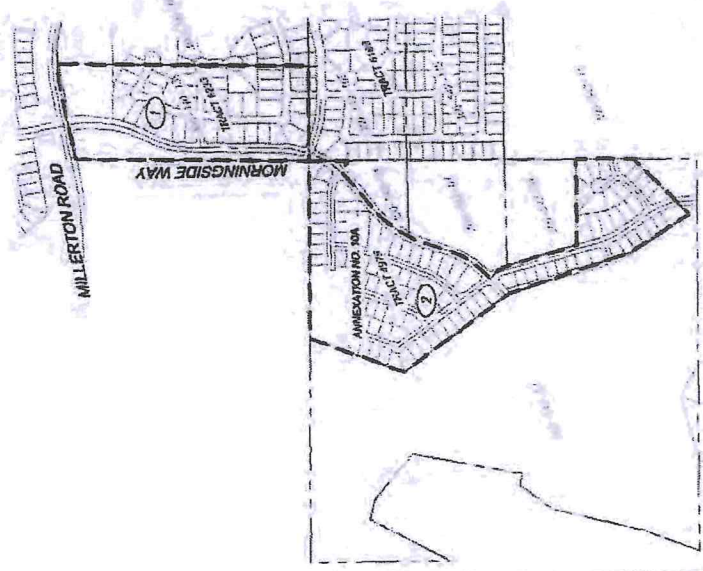
THE MAP WAS FILED AT THE CLERK'S OFFICE OF THE COUNTY OF FRESNO, STATE OF CALIFORNIA, ON APRIL 22, 2016, AT 10:00 AM. THE MAP IS SUBJECT TO THE PROVISIONS OF SECTION 56200 OF THE GOVERNMENT CODE, WHICH PROVIDES THAT THE COUNTY CLERK SHALL NOT BE RESPONSIBLE FOR THE CONTENTS OF THE MAP OR FOR THE ACCURACY OF THE INFORMATION THEREON.

EXEMPT FROM 562 FEES PER 56277(b)(1)(C)

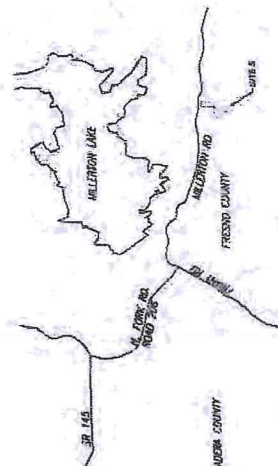
*Angela ...*  
COUNTY CLERK

THE LINES AND BOUNDARIES OF EACH LOT OR TRACT SHOWN ON THIS MAP SHALL BE THOSE LINES AND BOUNDARIES AS SHOWN ON THE RECORDS OF THE COUNTY OF FRESNO, STATE OF CALIFORNIA.

THE PLAT IS SUBJECT TO THE PROVISIONS OF SECTION 56200 OF THE GOVERNMENT CODE, WHICH PROVIDES THAT THE COUNTY CLERK SHALL NOT BE RESPONSIBLE FOR THE CONTENTS OF THE MAP OR FOR THE ACCURACY OF THE INFORMATION THEREON.



CATEGORY	DESCRIPTION	ACREAGE	APPROXIMATE VALUE
1	Lot 1503	0.15	\$15,000
2	Lot 1504	0.15	\$15,000
3	Lot 1505	0.15	\$15,000
4	Lot 1506	0.15	\$15,000
5	Lot 1507	0.15	\$15,000
6	Lot 1508	0.15	\$15,000
7	Lot 1509	0.15	\$15,000
8	Lot 1510	0.15	\$15,000
9	Lot 1511	0.15	\$15,000
10	Lot 1512	0.15	\$15,000
11	Lot 1513	0.15	\$15,000
12	Lot 1514	0.15	\$15,000
13	Lot 1515	0.15	\$15,000
14	Lot 1516	0.15	\$15,000
15	Lot 1517	0.15	\$15,000
16	Lot 1518	0.15	\$15,000
17	Lot 1519	0.15	\$15,000
18	Lot 1520	0.15	\$15,000
19	Lot 1521	0.15	\$15,000
20	Lot 1522	0.15	\$15,000
21	Lot 1523	0.15	\$15,000
22	Lot 1524	0.15	\$15,000
23	Lot 1525	0.15	\$15,000
24	Lot 1526	0.15	\$15,000
25	Lot 1527	0.15	\$15,000
26	Lot 1528	0.15	\$15,000
27	Lot 1529	0.15	\$15,000
28	Lot 1530	0.15	\$15,000
29	Lot 1531	0.15	\$15,000
30	Lot 1532	0.15	\$15,000
31	Lot 1533	0.15	\$15,000
32	Lot 1534	0.15	\$15,000
33	Lot 1535	0.15	\$15,000
34	Lot 1536	0.15	\$15,000
35	Lot 1537	0.15	\$15,000
36	Lot 1538	0.15	\$15,000
37	Lot 1539	0.15	\$15,000
38	Lot 1540	0.15	\$15,000
39	Lot 1541	0.15	\$15,000
40	Lot 1542	0.15	\$15,000
41	Lot 1543	0.15	\$15,000
42	Lot 1544	0.15	\$15,000
43	Lot 1545	0.15	\$15,000
44	Lot 1546	0.15	\$15,000
45	Lot 1547	0.15	\$15,000
46	Lot 1548	0.15	\$15,000
47	Lot 1549	0.15	\$15,000
48	Lot 1550	0.15	\$15,000
49	Lot 1551	0.15	\$15,000
50	Lot 1552	0.15	\$15,000
51	Lot 1553	0.15	\$15,000
52	Lot 1554	0.15	\$15,000
53	Lot 1555	0.15	\$15,000
54	Lot 1556	0.15	\$15,000
55	Lot 1557	0.15	\$15,000
56	Lot 1558	0.15	\$15,000
57	Lot 1559	0.15	\$15,000
58	Lot 1560	0.15	\$15,000
59	Lot 1561	0.15	\$15,000
60	Lot 1562	0.15	\$15,000
61	Lot 1563	0.15	\$15,000
62	Lot 1564	0.15	\$15,000
63	Lot 1565	0.15	\$15,000
64	Lot 1566	0.15	\$15,000
65	Lot 1567	0.15	\$15,000
66	Lot 1568	0.15	\$15,000
67	Lot 1569	0.15	\$15,000
68	Lot 1570	0.15	\$15,000
69	Lot 1571	0.15	\$15,000
70	Lot 1572	0.15	\$15,000
71	Lot 1573	0.15	\$15,000
72	Lot 1574	0.15	\$15,000
73	Lot 1575	0.15	\$15,000
74	Lot 1576	0.15	\$15,000
75	Lot 1577	0.15	\$15,000
76	Lot 1578	0.15	\$15,000
77	Lot 1579	0.15	\$15,000
78	Lot 1580	0.15	\$15,000
79	Lot 1581	0.15	\$15,000
80	Lot 1582	0.15	\$15,000
81	Lot 1583	0.15	\$15,000
82	Lot 1584	0.15	\$15,000
83	Lot 1585	0.15	\$15,000
84	Lot 1586	0.15	\$15,000
85	Lot 1587	0.15	\$15,000
86	Lot 1588	0.15	\$15,000
87	Lot 1589	0.15	\$15,000
88	Lot 1590	0.15	\$15,000
89	Lot 1591	0.15	\$15,000
90	Lot 1592	0.15	\$15,000
91	Lot 1593	0.15	\$15,000
92	Lot 1594	0.15	\$15,000
93	Lot 1595	0.15	\$15,000
94	Lot 1596	0.15	\$15,000
95	Lot 1597	0.15	\$15,000
96	Lot 1598	0.15	\$15,000
97	Lot 1599	0.15	\$15,000
98	Lot 1600	0.15	\$15,000
99	Lot 1601	0.15	\$15,000
100	Lot 1602	0.15	\$15,000



VICINITY MAP  
NOT TO SCALE

62

<b>PRECISION CIVIL ENGINEERING, INC.</b> PLANNING & SURVEYING & CIVIL ENGINEERING 1730 O STREET, FRESNO, CALIFORNIA 93701 TEL: 559-449-4500 FAX: 559-419-4515 WWW.PRECISIONENG.NET	PROJECT TITLE MILLERTON SPECIFIC PLAN ANNEXATION MAP NO. 10A SITES	PROJECT NO. ASSEMBLY GROUP FRESNO, CA 93711 1706 W. HENDON SUITE 110 (559) 440-0308	DRAWN BY: RA CHECKED BY: DY DATE: 12/20/16	SHEET NUMBER: 1 OF 145 JOB NUMBER: 16-008
	CITY OF: FRESNO	COUNTY OF: FRESNO	PROJECT NO.	PROJECT NO.















Exhibit C

**EXHIBIT A**

**ANNEXATION MAP NO. 10A OF COMMUNITY FACILITIES DISTRICT NO. 2006-01  
(POLICE PROTECTION SERVICES), COUNTY OF FRESNO, STATE OF CALIFORNIA**

IN THE COUNTY OF FRESNO, STATE OF CALIFORNIA

**SITE #90**

A CITY COUNTY HAS THE RIGHT AND POWER TO ANNEX TERRITORY IN THE COUNTY OF FRESNO, STATE OF CALIFORNIA AND PROVED BY THE  
 CITY OF FRESNO, CALIFORNIA, AS A POLICE PROTECTION SERVICE, COUNTY OF FRESNO, STATE OF CALIFORNIA, AS A POLICE PROTECTION SERVICE,  
 TO BE IN THE CITY OF FRESNO, CALIFORNIA, AS A POLICE PROTECTION SERVICE, COUNTY OF FRESNO, STATE OF CALIFORNIA, AS A POLICE PROTECTION SERVICE,

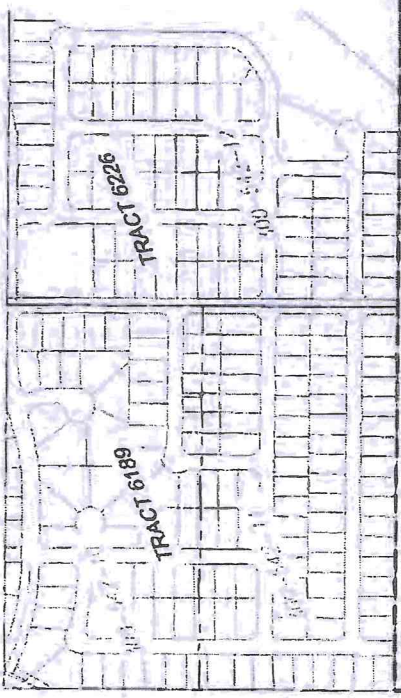
*Shirley Lynn Davis*  
 COUNTY CLERK - FRESNO

FILE THIS MAP WITH THE COUNTY CLERK OF FRESNO, CALIFORNIA, IN THE OFFICE OF THE COUNTY CLERK IN THE COUNTY OF FRESNO, STATE OF CALIFORNIA,  
 WITHIN 30 DAYS OF THE DATE OF THE CITY OF FRESNO, CALIFORNIA, AS A POLICE PROTECTION SERVICE, COUNTY OF FRESNO, STATE OF CALIFORNIA, AS A POLICE PROTECTION SERVICE,  
 EXEMPT FROM S&L FEES PER  
 SECTION 213.1(a)(1)

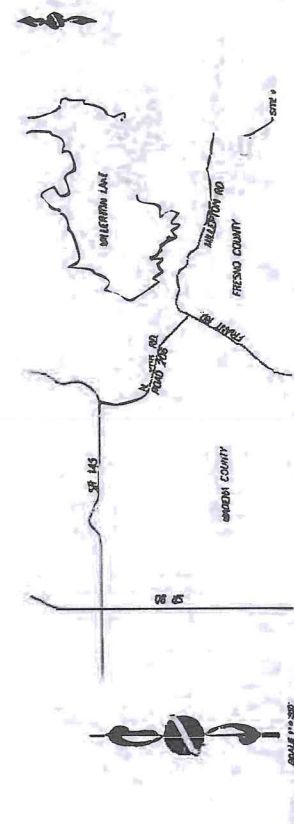
*Angela Williams*  
 COUNTY CLERK - FRESNO

THE CITY AND COUNTY OF FRESNO, CALIFORNIA, AS A POLICE PROTECTION SERVICE, COUNTY OF FRESNO, STATE OF CALIFORNIA, AS A POLICE PROTECTION SERVICE,  
 THE FRESNO COUNTY ASSOCIATION HAS THE RIGHT AND POWER TO ANNEX TERRITORY IN THE COUNTY OF FRESNO, STATE OF CALIFORNIA, AS A POLICE PROTECTION SERVICE,  
 TO BE IN THE CITY OF FRESNO, CALIFORNIA, AS A POLICE PROTECTION SERVICE, COUNTY OF FRESNO, STATE OF CALIFORNIA, AS A POLICE PROTECTION SERVICE,

THE FRESNO COUNTY ASSOCIATION HAS THE RIGHT AND POWER TO ANNEX TERRITORY IN THE COUNTY OF FRESNO, STATE OF CALIFORNIA, AS A POLICE PROTECTION SERVICE,  
 TO BE IN THE CITY OF FRESNO, CALIFORNIA, AS A POLICE PROTECTION SERVICE, COUNTY OF FRESNO, STATE OF CALIFORNIA, AS A POLICE PROTECTION SERVICE,  
 THE FRESNO COUNTY ASSOCIATION HAS THE RIGHT AND POWER TO ANNEX TERRITORY IN THE COUNTY OF FRESNO, STATE OF CALIFORNIA, AS A POLICE PROTECTION SERVICE,  
 TO BE IN THE CITY OF FRESNO, CALIFORNIA, AS A POLICE PROTECTION SERVICE, COUNTY OF FRESNO, STATE OF CALIFORNIA, AS A POLICE PROTECTION SERVICE,



TRACT 1490A  
 ANNEXATION NO. 10A



**VICINITY MAP**  
 NOT TO SCALE

 PRECISION PLANNING & SURVEYING & CIVIL ENGINEERING, INC. 1250 N. TRINITY, FRESNO, CALIFORNIA 93728 TEL: 558-6848 FAX: 558-6848-4535 WWW.PRECISIONINC.COM	PROJECT TITLE ANNEXATION MAP NO. 10A SITE 9	CITY OF FRESNO	PREPARED FOR ASSEM GROUP FRESNO, CA 93711 (559) 440-8308	SHEET NUMBER 1 OF 146 JOB NUMBER 15-008
	PROJECT NUMBER ANNEXATION MAP NO. 10A SITE 9	COUNTY OF FRESNO	DRAWN BY CHECKED BY DATE	SCALE 1" = 200'



Exhibit C

**EXHIBIT A**  
**ANNEXATION MAP NO. 10A OF COMMUNITY FACILITIES DISTRICT NO. 2006-01**  
**(POLICE PROTECTION SERVICES), COUNTY OF FRESNO, STATE OF CALIFORNIA**  
**IN THE COUNTY OF FRESNO, STATE OF CALIFORNIA**

**SITE #10**

I, COUNTY CLERK OF THE COUNTY OF FRESNO, STATE OF CALIFORNIA, DO HEREBY CERTIFY THAT THE ABOVE DESCRIBED MAP WAS FILED IN THE OFFICE OF THE COUNTY CLERK OF FRESNO COUNTY, CALIFORNIA, ON APRIL 11, 2006, AT 10:00 AM, AND THAT THE SAME IS A TRUE AND CORRECT COPY OF THE MAP AS SUBMITTED TO THE COUNTY CLERK OF FRESNO COUNTY, CALIFORNIA, ON APRIL 11, 2006, AT 10:00 AM.

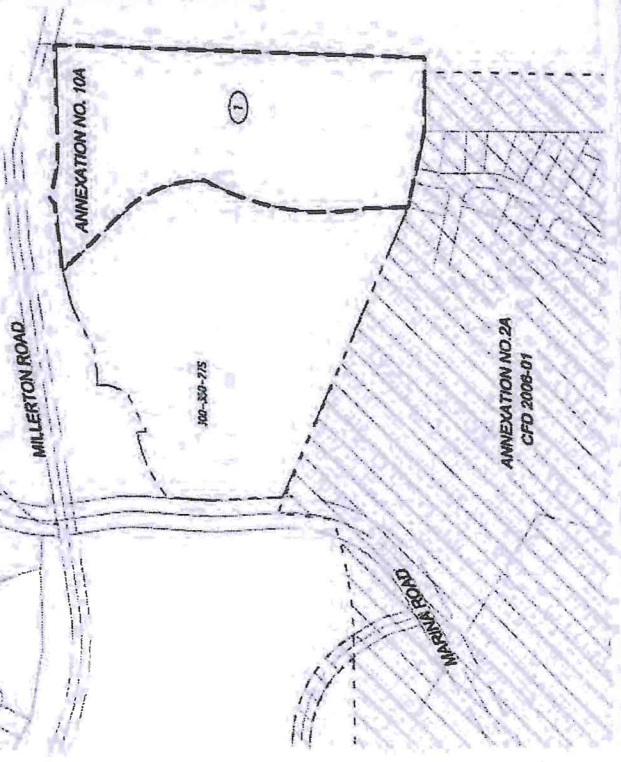
*Christina D. Duff*  
 COUNTY CLERK OF FRESNO COUNTY

THE MAP WAS FILED IN THE OFFICE OF THE COUNTY CLERK OF FRESNO COUNTY, CALIFORNIA, ON APRIL 11, 2006, AT 10:00 AM, AND THAT THE SAME IS A TRUE AND CORRECT COPY OF THE MAP AS SUBMITTED TO THE COUNTY CLERK OF FRESNO COUNTY, CALIFORNIA, ON APRIL 11, 2006, AT 10:00 AM.

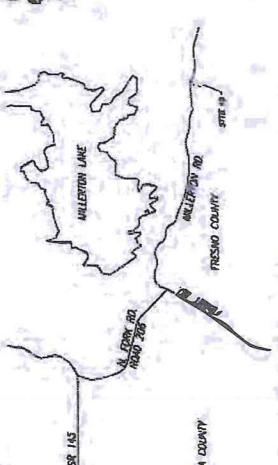
BY *Angela Ballester*  
 COUNTY ASSessor

THE LAND AND INCLUDES OF EACH LOT OR PARCEL, SHOWN ON THIS MAP, SHALL BE THESE LANDS AND INCLUDES AS SHOWN ON THE RECORD COUNTY ASSessor'S MAP FOR FISCAL YEAR 2006-01.

THE FRESNO COUNTY ASSessor'S MAP SHALL BE THE BASIS FOR THE DETERMINATION OF THE TAXES AND INCLUDES OF SUCH LOTS AND PARCELS.



TRACT	DESCRIPTION	ASSessor'S MAP NO.	TRACT MAP NO.
1	LOT 10	300-300-300	10
2	LOT 11	300-300-300	11
3	LOT 12	300-300-300	12
4	LOT 13	300-300-300	13
5	LOT 14	300-300-300	14
6	LOT 15	300-300-300	15
7	LOT 16	300-300-300	16
8	LOT 17	300-300-300	17
9	LOT 18	300-300-300	18
10	LOT 19	300-300-300	19
11	LOT 20	300-300-300	20
12	LOT 21	300-300-300	21
13	LOT 22	300-300-300	22
14	LOT 23	300-300-300	23
15	LOT 24	300-300-300	24
16	LOT 25	300-300-300	25
17	LOT 26	300-300-300	26
18	LOT 27	300-300-300	27
19	LOT 28	300-300-300	28
20	LOT 29	300-300-300	29
21	LOT 30	300-300-300	30



**VICINITY MAP**  
 NOT TO SCALE

<b>PRECISION</b> CIVIL ENGINEERING, INC. PLANNING & SURVEYING & CIVIL ENGINEERING 1034 STREET, FRESNO, CALIFORNIA 93711 TEL: 329-445-4500 FAX: 329-445-4515 WWW.PRECISIONINC.NET	PROJECT TITLE MILLERTON SPECIFIC PLAN	DRAWN BY ANNEKATON MAP NO. 10A SITE 10	CITY OR COUNTY FRESNO
	PREPARED FOR ASSEM GROUP FRESNO, CA 93711 1588 W. HERDON SUITE 110 (559) 440-8308	SHEET NUMBER 1 OF 1	DRAWN BY DY
PROJECT NO. 06-0000		DATE 3/29/06	SHEET NUMBER 1 OF 1



Exhibit C

68

**EXHIBIT A**

**ANNEXATION MAP NO. 10A OF COMMUNITY FACILITIES DISTRICT NO. 2006-01  
(POLICE PROTECTION SERVICES), COUNTY OF FRESNO, STATE OF CALIFORNIA  
IN THE COUNTY OF FRESNO, STATE OF CALIFORNIA**

**SITE #11**

I, COUNTY CLERK OF THE COUNTY OF FRESNO, STATE OF CALIFORNIA, DO HEREBY CERTIFY THAT THE ABOVE MAP SHOWS THE BOUNDARIES OF THE POLICE PROTECTION SERVICES DISTRICT NO. 2006-01 AS APPROVED BY THE BOARD OF SUPERVISORS OF THE COUNTY OF FRESNO, STATE OF CALIFORNIA, ON THE DATE OF THE BOARD'S ACTION AS SHOWN ON THE MAP.

IN WITNESS WHEREOF, I HAVE HEREUNTO SET MY HAND AND SEAL OF OFFICE AT FRESNO, CALIFORNIA, THIS 11TH DAY OF FEBRUARY, 2006.

*[Signature]*  
COUNTY CLERK  
OF THE COUNTY OF FRESNO

THE MAP OF THE DISTRICT NO. 2006-01, AS SHOWN ON THE MAP, IS THE PROPERTY OF THE COUNTY OF FRESNO, STATE OF CALIFORNIA.

**EXTRACT FROM 462 FEES FOR  
G.C. 27380 (C)(4)**

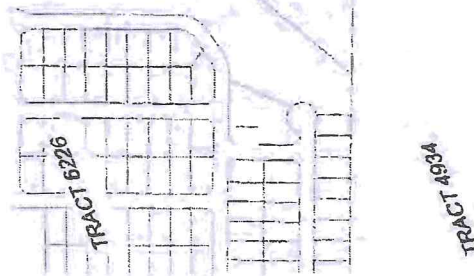
BY *[Signature]*  
COUNTY RECORDER  
OF THE COUNTY OF FRESNO

THE LINES AND DIMENSIONS OF EACH LOT OF LAND, SHOWN ON THIS MAP, HAVE BEEN MEASURED AND FOUND TO BE CORRECT AND ACCURATE AS SHOWN ON THE MAP.

THE FRESNO COUNTY ASSESSOR'S MAP SHALL GOVERN OVER ALL OTHER MAPS CONCERNING THE LAND AND DIMENSIONS OF SUCH LOTS AND PARCELS.

ANNEXATION NO. 2A  
CFD 2006-01

ANNEXATION NO. 10A



PROPERTY	ASSESSOR'S MAP NO.	DATE	TRACT NUMBER
LOT 1	100-100-00-000	11	1
LOT 2	100-100-00-000	11	2
LOT 3	100-100-00-000	11	3
LOT 4	100-100-00-000	11	4
LOT 5	100-100-00-000	11	5
LOT 6	100-100-00-000	11	6
LOT 7	100-100-00-000	11	7
LOT 8	100-100-00-000	11	8
LOT 9	100-100-00-000	11	9
LOT 10	100-100-00-000	11	10

PROPERTY	ASSESSOR'S MAP NO.	DATE	TRACT NUMBER
LOT 1	100-100-00-000	11	1
LOT 2	100-100-00-000	11	2
LOT 3	100-100-00-000	11	3
LOT 4	100-100-00-000	11	4
LOT 5	100-100-00-000	11	5
LOT 6	100-100-00-000	11	6
LOT 7	100-100-00-000	11	7
LOT 8	100-100-00-000	11	8
LOT 9	100-100-00-000	11	9
LOT 10	100-100-00-000	11	10



**VICINITY MAP**  
NOT TO SCALE



<b>PRECISION CIVIL ENGINEERING, INC.</b> PLANNING SURVEYING & CIVIL ENGINEERING 1040 S 5TH ST, FRESNO, CALIFORNIA 93721 TEL: 559-499-4300 FAX: 559-499-4313 WWW.PRECISIONE.NET	PROJECT TITLE: <b>MILITON SPECIFIC PLAN</b>	SHEET DESCRIPTION: <b>ANNEXATION MAP NO. 10A SITE 11</b>	CITY OF: <b>FRESNO</b>
	PROJECT NO. FOR: <b>ARSEMI GROUP</b> <b>1366 W. HENDON SUITE 110</b> <b>FRESNO, CA 93711</b> (559) 440-8300	DRAWN BY: <b>DA</b>	CHECKED BY: <b>DT</b>
SHEET NUMBER: <b>1-11-OF-195</b>		TOTAL SHEETS: <b>195-198</b>	



Exhibit C

**ANNEXATION MAP NO. 10A OF COMMUNITY FACILITIES DISTRICT NO. 2006-01  
(POLICE PROTECTION SERVICES), COUNTY OF FRESNO, STATE OF CALIFORNIA**

**EXHIBIT A**

IN THE COUNTY OF FRESNO, STATE OF CALIFORNIA

**SITE #12**

I, Board of Supervisors of the County of Fresno, do hereby certify that the within map showing boundaries of Annexation No. 10A of Community Facilities District No. 2006-01 (Police Protection Services) County of Fresno, State of California was approved by the Board of Supervisors of the County of Fresno at a regular meeting held on the 22nd day of April, 2006, at Fresno, California, in accordance with the provisions of the State Constitution and the laws of the State of California.

*Shirley Lynn DeSantis*  
 Clerk to the Board of Supervisors  
 of the County of Fresno

FILE THIS MAP IN THE OFFICE OF THE COUNTY CLERK OF FRESNO, CALIFORNIA, AT THE MAIN OFFICE OF THE COUNTY CLERK, 1000 N. MARKET STREET, FRESNO, CALIFORNIA 93701. THE COUNTY CLERK SHALL RECORD THIS MAP IN THE OFFICE OF THE COUNTY CLERK OF FRESNO, CALIFORNIA, AT THE MAIN OFFICE OF THE COUNTY CLERK, 1000 N. MARKET STREET, FRESNO, CALIFORNIA 93701. THE COUNTY CLERK SHALL RECORD THIS MAP IN THE OFFICE OF THE COUNTY CLERK OF FRESNO, CALIFORNIA, AT THE MAIN OFFICE OF THE COUNTY CLERK, 1000 N. MARKET STREET, FRESNO, CALIFORNIA 93701.

FILE THIS MAP IN THE OFFICE OF THE COUNTY CLERK OF FRESNO, CALIFORNIA, AT THE MAIN OFFICE OF THE COUNTY CLERK, 1000 N. MARKET STREET, FRESNO, CALIFORNIA 93701.

EXEMPT FROM SML FEES PER  
 GC 27308.1(2)(C)

FILE THIS MAP IN THE OFFICE OF THE COUNTY CLERK OF FRESNO, CALIFORNIA, AT THE MAIN OFFICE OF THE COUNTY CLERK, 1000 N. MARKET STREET, FRESNO, CALIFORNIA 93701.

FILE THIS MAP IN THE OFFICE OF THE COUNTY CLERK OF FRESNO, CALIFORNIA, AT THE MAIN OFFICE OF THE COUNTY CLERK, 1000 N. MARKET STREET, FRESNO, CALIFORNIA 93701.

FILE THIS MAP IN THE OFFICE OF THE COUNTY CLERK OF FRESNO, CALIFORNIA, AT THE MAIN OFFICE OF THE COUNTY CLERK, 1000 N. MARKET STREET, FRESNO, CALIFORNIA 93701.

*Angela Bell*  
 County Assessor-Recorder  
 of the County of Fresno

THE LAND AND INTERESTS OF EACH LOT OR PARCEL SHOWN IN THIS MAP SHALL BE THOSE SHOWN AS SHOWN ON THE FRESNO COUNTY ASSESSOR'S MAP FOR FISCAL YEAR 2006.

THE FRESNO COUNTY ASSESSOR'S MAP SHALL SHOW THE LAND AND INTERESTS OF EACH LOT AND PARCEL.

THE BOARD OF SUPERVISORS OF THE COUNTY OF FRESNO APPROVES THE CHANGING BOUNDARY MAP OF THE DISTRICT, DISTRICT NO. 2006-01 (POLICE PROTECTION SERVICES) COUNTY OF FRESNO, STATE OF CALIFORNIA, WHICH HAS BEEN PREPARED TO SECOND 2311 OF THE CALIFORNIA SURVEY AND ADJUSTMENT CODE, ON APRIL 3, 2006, IN ACCORDANCE WITH THE PROVISIONS OF THE STATE OF CALIFORNIA, AS APPLICABLE TO THIS DISTRICT.

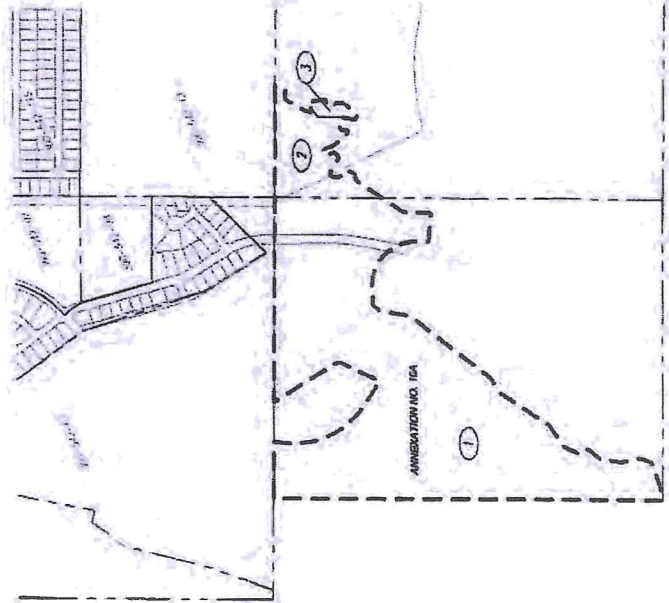
**PRECISION**  
 CIVIL ENGINEERING, INC.  
 PLANNING & SURVEYING & CIVIL ENGINEERING  
 1424 O STREET, FRESNO, CALIFORNIA 93701  
 TEL: 558-45-1300 FAX: 558-45-1313  
 WWW.PRECISIONENR.COM

PROJECT TITLE: MILLERTON SPECIFIC PLAN  
 SHEET NO. 10A SITE 12  
 COUNTY OF FRESNO

PREPARED FOR: ASSDAL GROUP  
 1506 W. HERON SUITE 110  
 FRESNO, CA 93711  
 (559) 440-8300

DATE: 3/27/06  
 DRAWN BY: RA  
 CHECKED BY: DJ

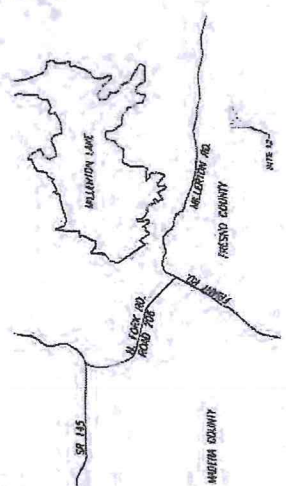
SCALE: 1" = 500'  
 0' 100' 200'



**LEGEND**

BOUNDARY	DESCRIPTION
(1)	ANNEXATION NUMBER
(2)	LOT LINE
(3)	OWNER LINE
(4)	APN LINES
(5)	PROPOSED ANNEXATION TO DISTRICT NO. 2006-01
(6)	EXISTING ANNEXATION (SEE DISTRICT NO. 2006-01)

PARCEL	ASSASSOR'S PARCEL NO.	SITE NO.	TRACT MAP NO.
1	300-540-30	12	
2	300-540-31	13	
3	300-540-32	14	



**VICINITY MAP**  
 NOT TO SCALE



Exhibit C

70

**ANNEXATION MAP NO. 10A OF COMMUNITY FACILITIES DISTRICT NO. 2006-01  
(POLICE PROTECTION SERVICES), COUNTY OF FRESNO, STATE OF CALIFORNIA**

**EXHIBIT A**

**PRECISION CIVIL ENGINEERING, INC.**  
PLANNING SURVEYING & CIVIL ENGINEERING  
1141 P STREET, FRESNO, CALIFORNIA 93711  
TEL: 558-454-4500 FAX: 558-454-4515  
WWW.PRECISION-ENG.COM

**PROJECT TITLE**  
MILITON SPECIFIC PLAN  
**SHEET DESCRIPTION**  
ANNEXATION MAP NO. 10A SITE 13  
**CITY OR COUNTY OR**  
FRESNO

**PREPARED FOR**  
ASSEM GROUP  
FRESNO, CA 93711  
1388 W. HENDON SUITE 110  
(559) 440-8308

**DATE:** 08/11/10  
**DESIGNED BY:** DV  
**CHECKED BY:** JTB  
**DATE:** 07/29/10

**SHEET NUMBER**  
1 OF 16  
**JOB NUMBER**  
10-018

**SITE #13**  
I HEREBY CERTIFY THAT THE OFFICE HAS REVIEWED THE APPLICATION AND HAS DETERMINED THAT THE PROPOSED ANNEXATION IS IN THE BEST INTERESTS OF THE COUNTY OF FRESNO AND THAT THE PROPOSED ANNEXATION IS IN ACCORDANCE WITH THE POLICE PROTECTION SERVICES DISTRICT NO. 2006-01 AS AMENDED BY THE COUNTY BOARD OF SUPERVISORS ON 08/11/10.

*David S. ...*  
COUNTY CLERK  
OF THE COUNTY OF FRESNO

THE LANDS AND INTERESTS OF THE CITY OF FRESNO, CALIFORNIA, ARE HEREBY ANNEXED TO THE COUNTY OF FRESNO, CALIFORNIA, AS SHOWN ON THE ATTACHED MAP AND SUBJECT TO THE TERMS AND CONDITIONS SET FORTH IN THE ANNEXATION MAP NO. 10A OF COMMUNITY FACILITIES DISTRICT NO. 2006-01 AS AMENDED BY THE COUNTY BOARD OF SUPERVISORS ON 08/11/10.

*David S. ...*  
COUNTY CLERK  
OF THE COUNTY OF FRESNO

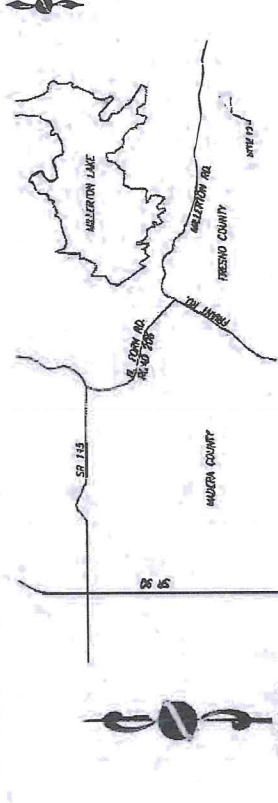
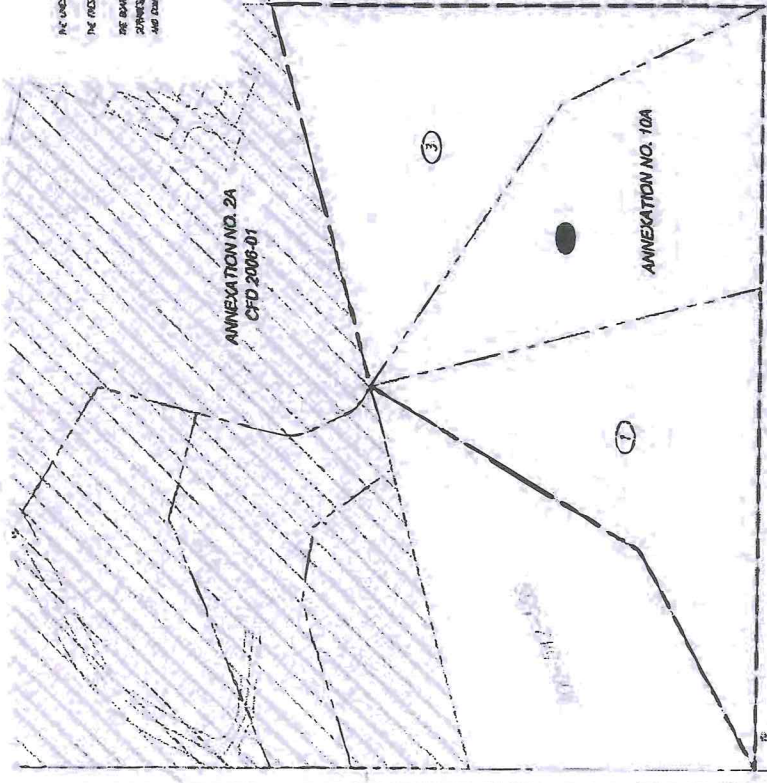
THE FRESNO COUNTY ASSOCIATES SHALL COMPLY WITH ALL LOCAL ORDINANCES, LAWS AND REGULATIONS OF THE COUNTY OF FRESNO, CALIFORNIA, AS SHOWN ON THE ATTACHED MAP AND SUBJECT TO THE TERMS AND CONDITIONS SET FORTH IN THE ANNEXATION MAP NO. 10A OF COMMUNITY FACILITIES DISTRICT NO. 2006-01 AS AMENDED BY THE COUNTY BOARD OF SUPERVISORS ON 08/11/10.

THE FRESNO COUNTY ASSOCIATES SHALL COMPLY WITH ALL LOCAL ORDINANCES, LAWS AND REGULATIONS OF THE COUNTY OF FRESNO, CALIFORNIA, AS SHOWN ON THE ATTACHED MAP AND SUBJECT TO THE TERMS AND CONDITIONS SET FORTH IN THE ANNEXATION MAP NO. 10A OF COMMUNITY FACILITIES DISTRICT NO. 2006-01 AS AMENDED BY THE COUNTY BOARD OF SUPERVISORS ON 08/11/10.

**LEGEND**

CAUTION	RECORDATION	PROPERTY ADDRESS
	LOT LINES	OWNER LINE
	APN LINES	PROPOSED ANNEXATION TO DISTRICT NO. 2006-01
		DISTRICT BOUNDARY DISTRICT NO. 2006-01

ASSEMBLY	ASSEMBLY PARCELS NO.	APN NO.	SUBJECT MAP NO.
1	100-144-105	13	-
2	100-144-105	14	-
3	100-144-105	15	-



**VICINITY MAP**  
NOT TO SCALE









## EXHIBIT D

**Mello-Roos Escalation Factor Tax Calculation**  
**For Fiscal Year 2020-21**  
**Countywide CFD No. 2006-01**  
Single Family

CPI for Current Period April 2020	290.304
<b>less:</b> CPI for Previous Period -April 2019	288.266
<hr/>	<hr/>
Index Point Change	2.038
<hr/>	<hr/>
Divide by Previous Period CPI (April 2019)	288.266
<hr/>	<hr/>
Equals Annual Escalation Factor	0.707%
Plus 3%	3.000%
	<hr/>
	3.707%
Less: Escalation Adjustment	0.000%
	<hr/>
	3.707%
Base FY 2020-21 (BAI#34, 07/9/19)	\$ 741.06
Escalation (Base X Escalation factor of 3.707%)	\$ 27.47
<hr/>	<hr/>
<b>Base plus Escalation</b>	<b>\$ 768.53</b>
<hr/>	<hr/>

**Single Family dwelling Tax**

Sources: CPI calculated using data from:

[www.bls.gov/CPI](http://www.bls.gov/CPI)

CPI-Urban Wage Earners and Clerical Workers for San Francisco/Oakland/San Jose, CA - 06/02/20

Base FY 2019-20 obtained from BAI #34, 07/9/19

## EXHIBIT D

**Mello-Roos Escalation Factor Tax Calculation**  
**For Fiscal Year 2020-21**  
**Countywide CFD No. 2006-01**  
Multi Family

CPI for Current Period April 2020	290.304
<b>less:</b> CPI for Previous Period -April 2019	288.266
<hr/>	
Index Point Change	2.038
<hr/>	
Divide by Previous Period CPI (April 2019)	288.266
<hr/>	
Equals Annual Escalation Factor	0.707%
Plus 3%	3.000%
	<hr/>
	3.707%
Less: Escalation Adjustment	0.000%
	<hr/>
	3.707%
Base FY 2020-21 (BAI#34, 07/9/19)	\$ 557.45
Escalation (Base X Escalation factor of 3.707%)	\$ 20.66
<hr/>	
<b>Base plus Escalation</b>	<b>\$ 578.11</b>
<hr/>	

**Multi family dwelling tax**

Sources: CPI calculated using data from:

[www.bls.gov/CPI](http://www.bls.gov/CPI)

CPI-Urban Wage Earners and Clerical Workers for San Francisco/Oakland/San Jose, CA - 06/02/20

Base FY 2019-20 obtained from BAI #34, 07/9/19



**EXHIBIT E**

**COUNTYWIDE CFD NO. 2006-01**

**FY 2020-21**

**Escalation Factor Adjustment Calculation**

Multi Family dwelling

		Annual Escalation Factor		Annual Escalation Factor	
CPI	April 2019	Apr 2018	Apr 2017	Apr 2018	Apr 2017
CPI	288.266	278.039	268.896	278.039	278.039
	290.304	288.266	278.039	278.039	278.039
Index Point Change from Prior Year	2.038 (Apr - Apr)	10.227 (Apr - Apr)	9.143 (Apr - Apr)	9.143 (Apr - Apr)	9.143 (Apr - Apr)
	0.707% CPI %	3.678% CPI %	3.400% CPI %	3.400% CPI %	3.400% CPI %
	3.000%	3.000%	3.000% +	3.000% +	3.000% +
<b>Cumulative Annual Escalation Factor</b>	<b>16.785%</b>	<b>3.707% Annual Escalation Factor</b>	<b>6.678% Annual Escalation Factor</b>	<b>6.678% Annual Escalation Factor</b>	<b>6.400% Annual Escalation Factor</b>

		Actual Costs (Sal & Benefits)		Actual Costs (Sal & Benefits)	
ESTIMATE	2018-19	2017-18	2016-17	2017-18	2016-17
	\$ 159,766.47	\$ 153,688.41	\$ 143,615.69	\$ 153,688.41	\$ 143,615.69
Estimate	\$ 172,097.51	\$ 159,766.47	\$ 153,688.41	\$ 159,766.47	\$ 153,688.41
	\$ 12,331.04	\$ 6,078.06	\$ 10,072.72	\$ 6,078.06	\$ 10,072.72
	7.718%	3.955%	7.014%	7.718%	7.014%
<b>Cumulative Increase</b>	<b>18.687%</b>	<b>7.718% Increase</b>	<b>3.955% Increase</b>	<b>7.718% Increase</b>	<b>7.014% Increase</b>

If the Cumulative Increase is less than Cumulative Annual Escalation Factor, then the difference thereof shall be the amount of the Escalation Factor Adjustment  
 If the Cumulative Increase is equal to or greater than the Cumulative Annual Escalation Factor, then the amount of the Escalation Factor Adjustment shall be zero.

Base FY 2019-20 (BAI#34, 07/09/19)	\$ 557.45
Annual Escalation Factor %	3.707%
Annual Escalation Factor Adjustment %	0.000%
	3.707%
Annual Escalation \$	20.66
Base + Escalation \$	578.11

FY 2020-21 Special Tax Rate-Multiple Family Dwelling

Sources: CPI calculated using data from: [www.bls.gov/cpi](http://www.bls.gov/cpi)  
 CPI-Urban Wage Earners and Clerical Workers for San Francisco/Oakland/San Jose, CA - 06/02/20  
 Base FY 2019-20 obtained from BAI #34, 07/09/20

**EXHIBIT E**

**COUNTYWIDE CFD NO. 2006-01**

**FY 2020-21**

**Escalation Factor Adjustment Calculation**

Single Family Dwelling

	Annual Escalation Factor			
CPI	April 2019	288.266	Apr 2018	278.039
CPI	April 2020	290.304	Apr 2019	288.266
Index Point Change from Prior Year	2.038 (Apr - Apr)	10.227 (Apr - Apr)	9.143 (Apr - Apr)	268.896
	0.707% CPI %	3.678% CPI %	3.400% CPI %	278.039
	3.000%	3.000%	3.000% +	
Cumulative Annual Escalation Factor	16.785%	3.707% Annual Escalation Factor	6.678% Annual Escalation Factor	6.400% Annual Escalation Factor

	Actual Costs (Sal & Benefits)			
Estimate	2018-19	\$ 159,766.47	2017-18	\$ 153,688.41
	2019-20	\$ 172,097.51	2018-19	\$ 159,766.47
	\$ 12,331.04	\$ 6,078.06	\$ 10,072.72	\$ 143,615.69
	7.718%	3.955%	7.014% Increase	
Cumulative Increase	18.687%	7.718% Increase	3.955% Increase	7.014% Increase

If the Cumulative Increase is less than Cumulative Annual Escalation Factor, then the difference thereof shall be the amount of the Escalation Factor Adjustment  
 If the Cumulative Increase is equal to or greater than the Cumulative Annual Escalation Factor, then the amount of the Escalation Factor Adjustment shall be zero.

Base FY 2019-20 (BAI#34, 07/09/19)	\$ 741.06
Annual Escalation Factor %	3.707%
Annual Escalation Factor Adjustment %	0.000%
	3.707%
Annual Escalation \$	27.47
Base + Escalation \$	768.53

FY 2020-21 Special Tax Rate-Single Family Dwelling

Sources: CPI calculated using data from: [www.bls.gov/CPI](http://www.bls.gov/CPI)  
 CPI-Urban Wage Earners and Clerical Workers for San Francisco/Oakland/San Jose, CA - 06/02/20  
 Base FY 2019-20 obtained from BAI #34, 07/09/19