

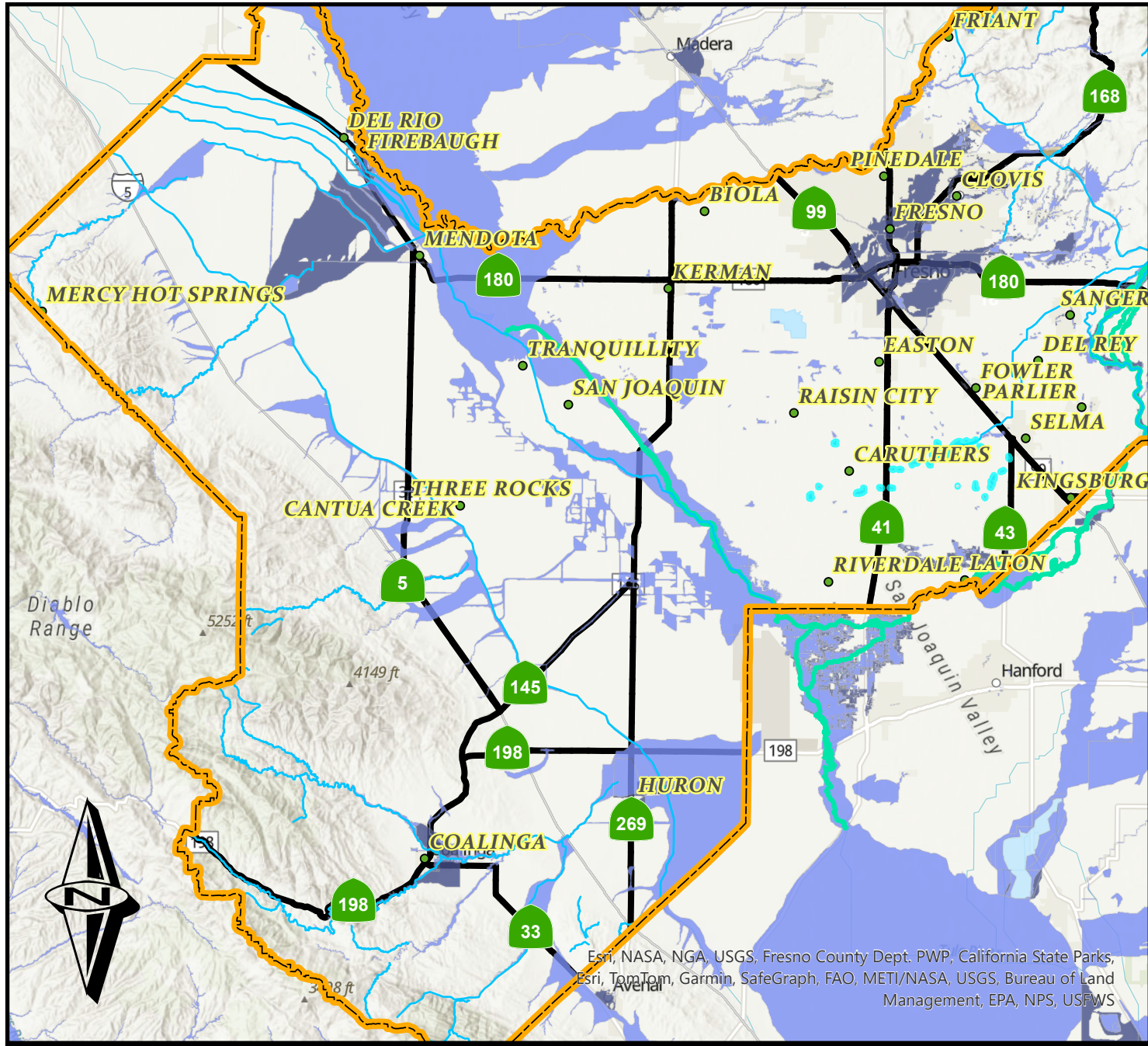


## Legend

- County Line
  - Waterway
  - Kings River
- ### FEMA Flood Zones
- 0.2% Annual Chance Flood Hazard
  - 1% Annual Chance Flood Hazard
  - Future Conditions 1% Annual Chance Flood Hazard
  - Regulatory Floodway
  - Area with Reduced Risk Due to Levee
  - Special Floodway

### State Highway

- Freeways
- Highways

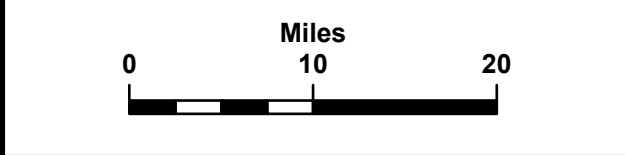


Esri, NASA, NGA, USGS, Fresno County Dept. PWP, California State Parks, Esri, TomTom, Garmin, SafeGraph, FAO, METI/NASA, USGS, Bureau of Land Management, EPA, NPS, USFWS

Prepared By: Diana Nuttman, Staff Analyst  
 Date: 01/16/2024  
 Agency: County of Fresno  
 Department: Public Works & Planning  
 Division: Design

2220 TULARE STREET, 6TH FLOOR, FRESNO, CA 93721  
 Phone: (559) 600-4109 | Fax: (559) 600-4544

SCALE IN MILES



DEPARTMENT OF PUBLIC WORKS & PLANNING

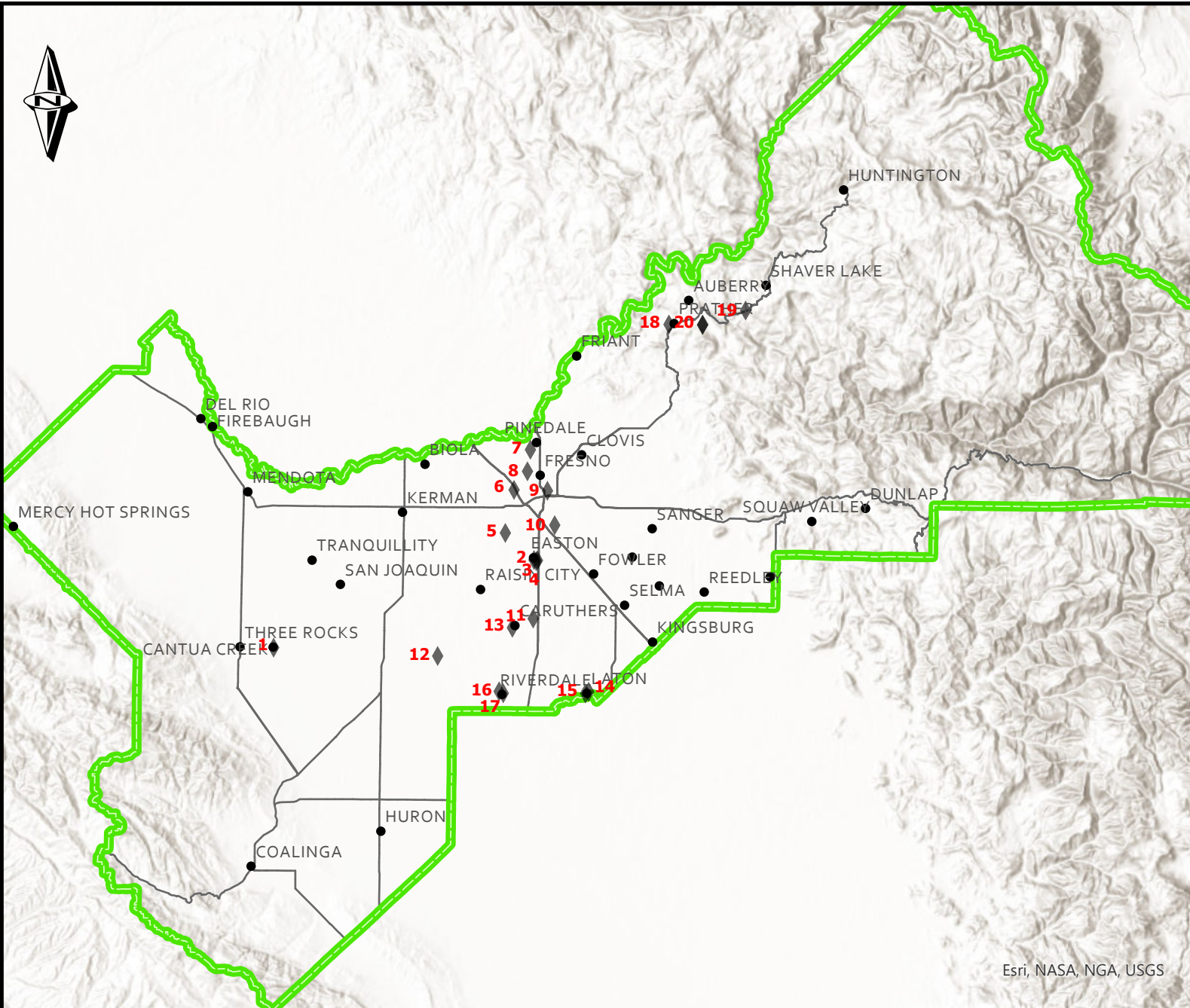
**WESTERN FRESNO COUNTY  
 FEMA FLOOD ZONES**



### Legend

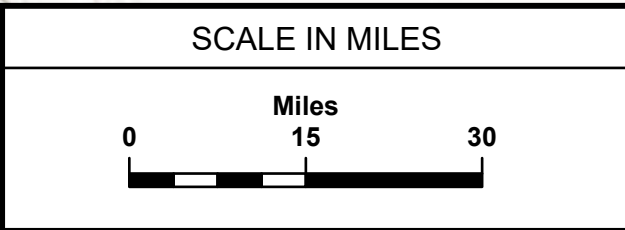
- x ♦ SCHOOLS
- County Line
- Highways / Freeways
- Cities / Towns

NO.	SCHOOL
1	Cantua Elementary
2	Easton Continuation High
3	Washington Colony Elementary
4	Washington Union High
5	West Park Elementary
6	Addams Elementary
7	Kratt Elementary
8	Powers-Ginsburg Elementary
9	Mayfair Elementary
10	Calwa Elementary
11	Alvina Elementary School
12	Burrel Union Elementary
13	Caruthers High
14	Laton Elementary
15	Laton High
16	Riverdale Elementary
17	Riverdale High School
18	Foothill Elementary School
19	Pine Ridge Elementary
20	Sierra High/Junior High



Esri, NASA, NGA, USGS

Prepared By: Diana Nuttman, Staff Analyst  
 Date: 01/18/2024  
 Agency: County of Fresno  
 Department: Public Works & Planning  
 Division: Design  
 2220 TULARE STREET, 6TH FLOOR, FRESNO, CA 93721  
 Phone: (559) 600-4109 | Fax: (559) 600-4544



*DEPARTMENT OF PUBLIC WORKS & PLANNING*

**FRESNO COUNTY REGIONAL SAFE ROUTES  
 TO SCHOOL ACTION PLAN:  
 SCHOOL LOCATIONS**