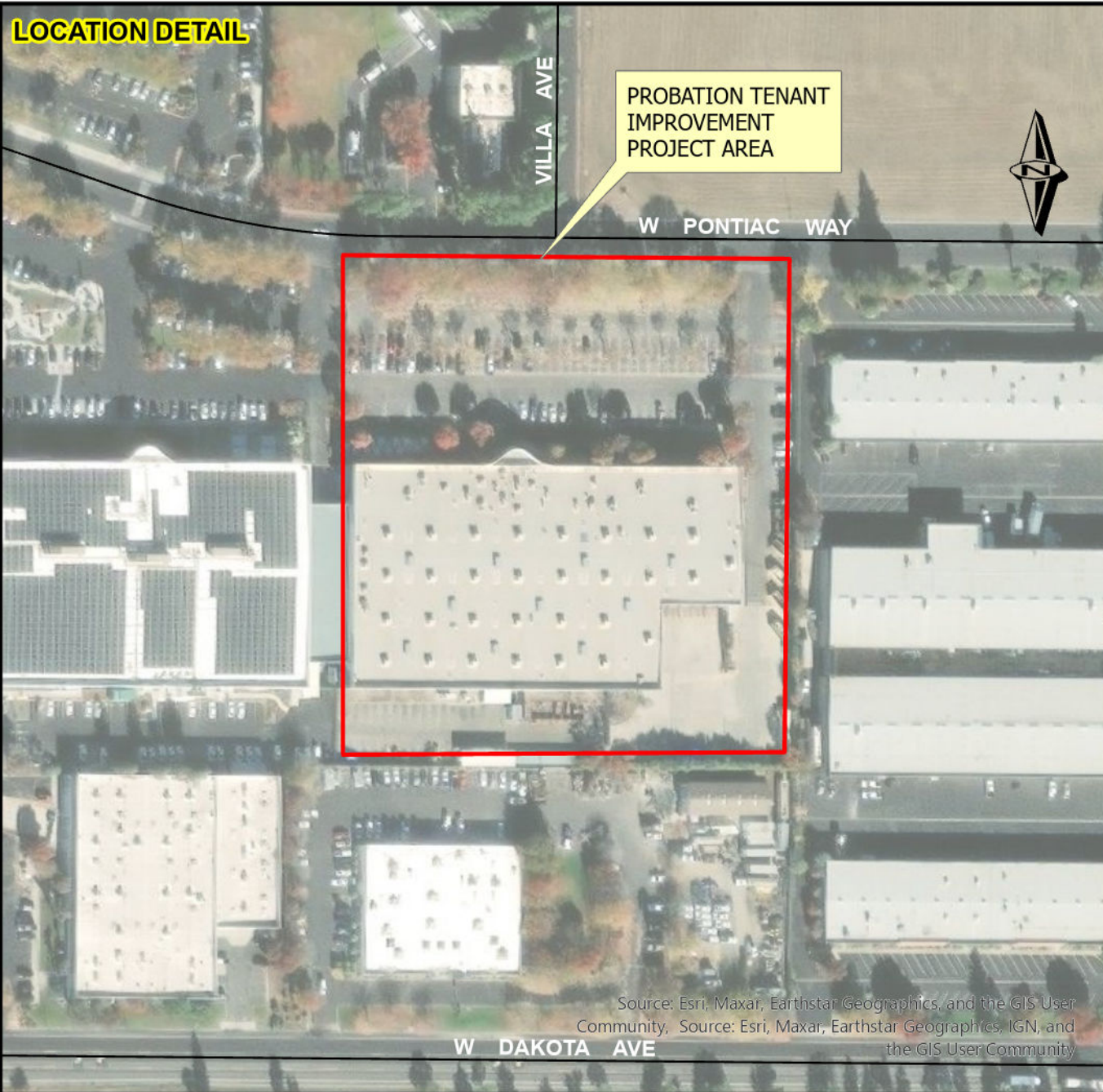


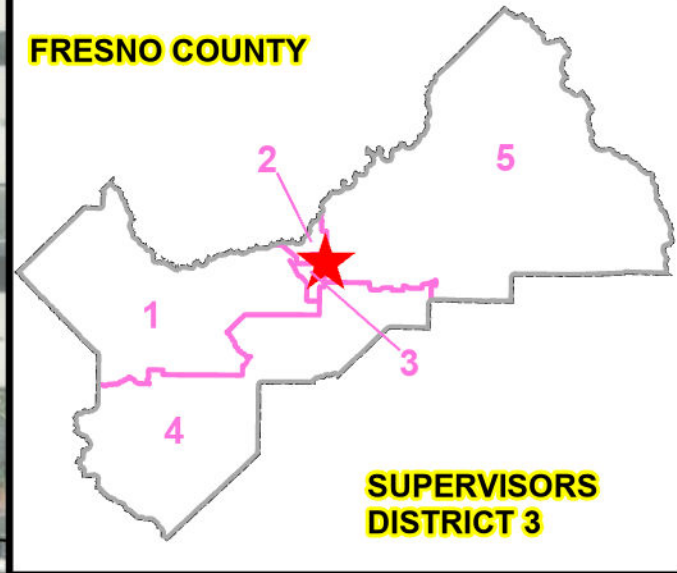
LOCATION DETAIL



PROBATION TENANT
IMPROVEMENT
PROJECT AREA



STREETS



FRESNO COUNTY

**SUPERVISORS
DISTRICT 3**

Source: Esri, Maxar, Earthstar Geographics, and the GIS User Community. Source: Esri, Maxar, Earthstar Geographics, IGN, and the GIS User Community

	DATE:	SCALE IN FEET
DESIGNED: D.N.	01/14/2025	
DRAWN: D.N.	01/14/2025	
STATE BRIDGE NO.	N/A	



DEPARTMENT OF PUBLIC WORKS & PLANNING

**PROBATION TENANT IMPROVEMENT
200 W. PONTIAC WAY, CLOVIS, CA 93612**