

2011 - 2021 Adopted Supervisorial District Map

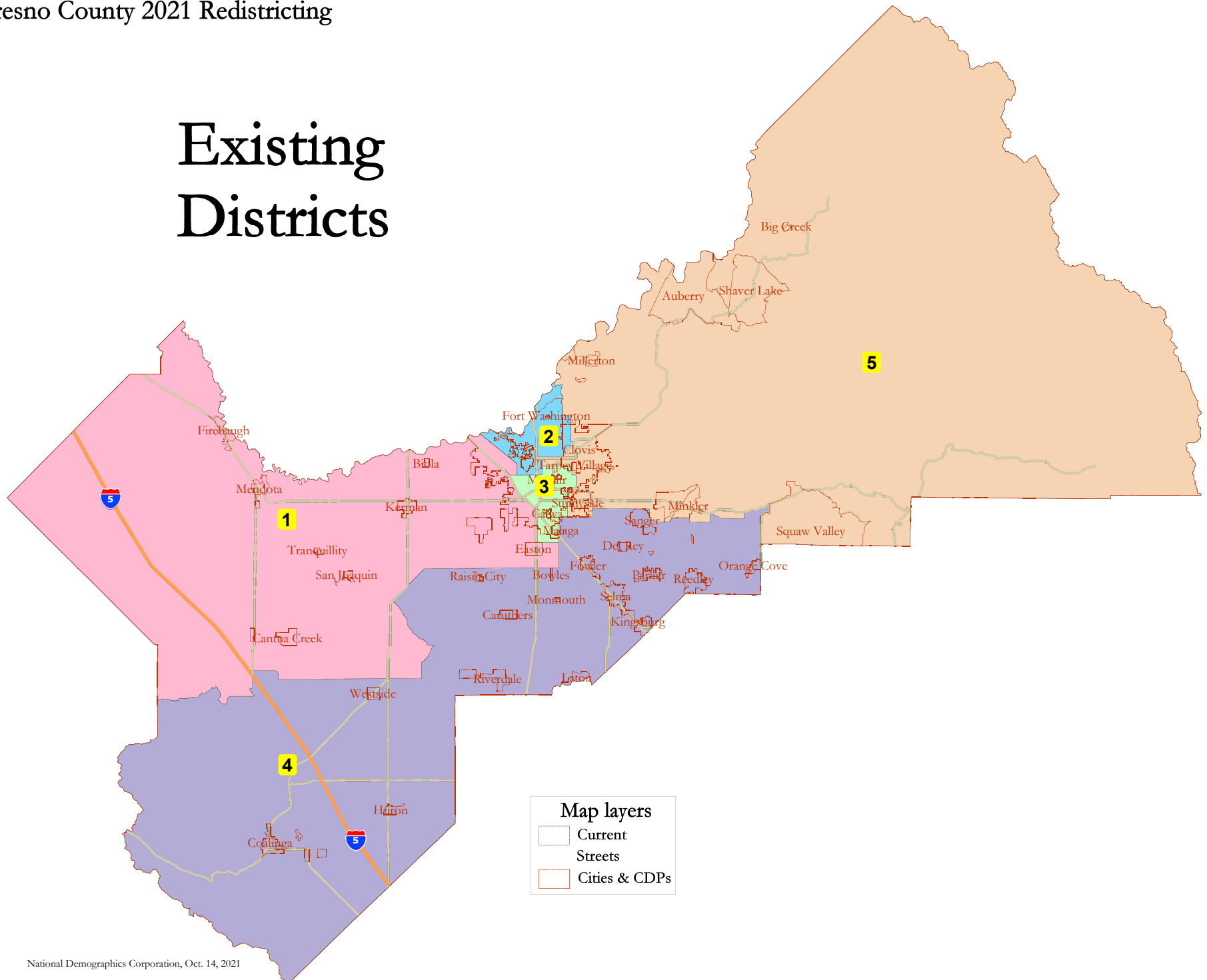
	Map Label	Name	Contiguous	Population Deviation	Notes
	Current	2011 Adopted	Yes	21.75%	Current Boundaries

2021 Draft Map Proposals

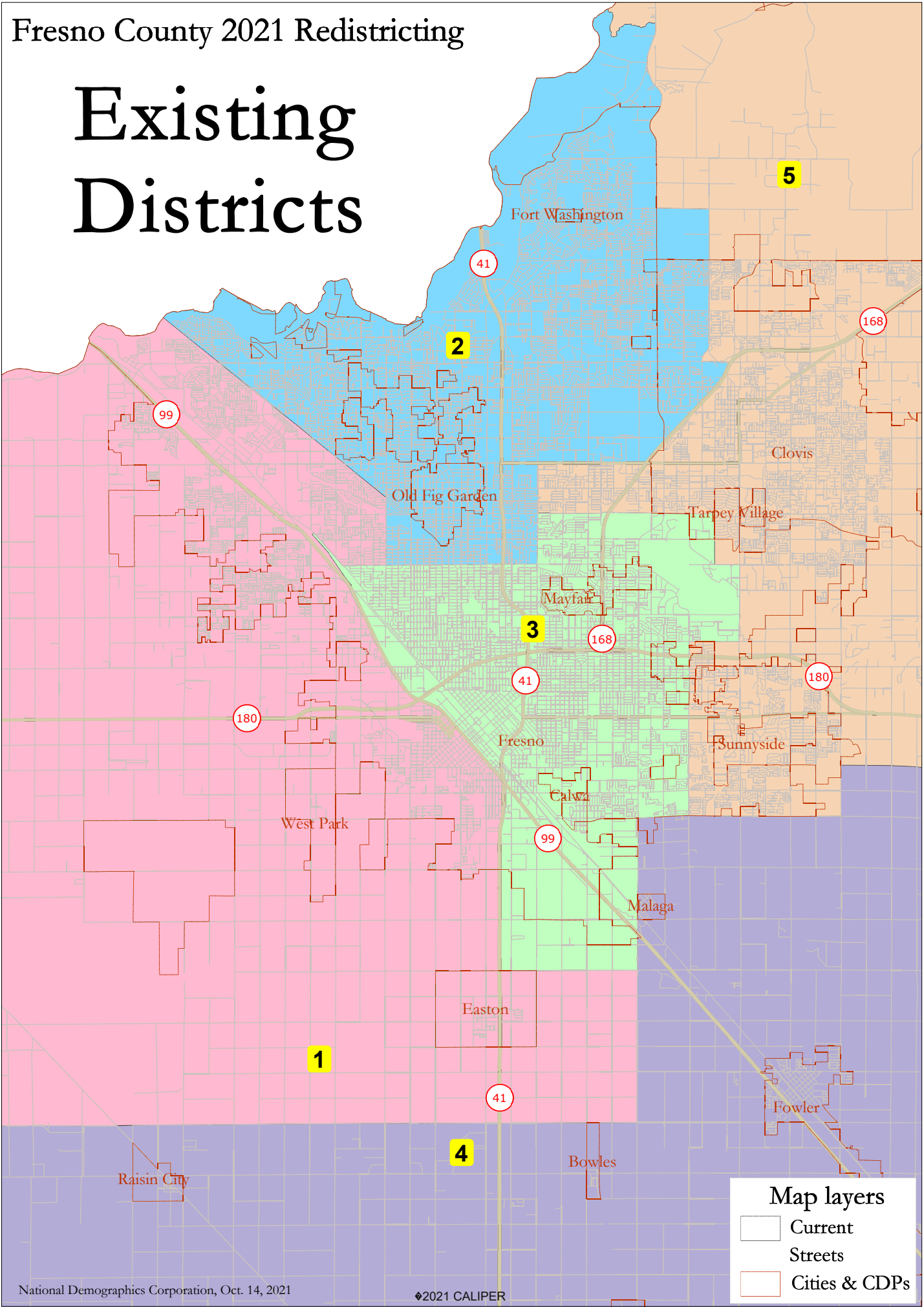
ARC Recommendation	Map Label	Name	Contiguous	Population Deviation	Notes
Yes	Public 101b	Fair Representation Fresno County	Yes	1.00%	ARC Recommended Public Map 101, as amended.
No	County A	Staff Developed	Yes	3.62%	Based on Board comments on Nov. 2, Agenda Item #17
No	County B	Staff Developed	Yes	1.69%	Based on Board comments on Nov. 2, Agenda Item #17
No	County C	Staff Developed	Yes	3.05%	Based on Board comments on Nov. 2, Agenda Item #17
No	County D	Staff Developed	Yes	1.48%	Based on Board comments on Nov. 2, Agenda Item #17
No	County E	Staff Developed	Yes	2.24%	Based on Board comments on Nov. 2, Agenda Item #17
No	County F	Staff Developed	Yes	1.99%	Based on Board comments on Nov. 2, Agenda Item #17
No	Public 125	Equitable Map Coalition	Yes	0.17%	Revisions submitted on Oct. 31, 2021

Note: An interactive GIS version of each listed map is available at : <https://arcg.is/1HDL0P0>
 The GIS website allows a user to compare various maps and zoom down to street level

Existing Districts



Existing Districts



Fresno County - Current Districts

District		1	2	3	4	5	Total
	Total Pop	205,264	199,107	188,307	185,990	229,862	1,008,530
	Deviation from ideal	3,558	-2,599	-13,399	-15,716	28,156	43,872
	% Deviation	1.76%	-1.29%	-6.64%	-7.79%	13.96%	21.75%
Total Pop	% Hisp	62.5%	34%	66%	77%	34%	54%
	% NH White	16%	45%	13%	16%	41%	27%
	% NH Black	8%	6%	7%	1%	4%	5%
	% Asian-American	12%	12%	12%	4%	17%	12%
Citizen Voting Age Pop	Total	104,729	142,491	100,997	94,210	142,620	585,047
	% Hisp	51%	27%	55%	64%	28%	42%
	% NH White	26%	57%	23%	28%	53%	40%
	% NH Black	11%	5%	8%	1%	4%	6%
	% Asian/Pac.Isl.	10%	10%	12%	5%	14%	11%
Voter Registration (Nov 2020)	Total	90,010	122,649	77,938	79,545	133,838	503,980
	% Latino est.	51%	25%	56%	64%	27%	41%
	% Spanish-Surnamed	47%	24%	52%	59%	25%	38%
	% Asian-Surnamed	6%	5%	3%	3%	6%	5%
	% Filipino-Surnamed	1%	1%	1%	1%	1%	1%
	% NH White est.	30%	64%	30%	32%	63%	48%
	% NH Black	14%	4%	11%	1%	4%	6%
Voter Turnout (Nov 2020)	Total	59,903	98,178	46,061	56,494	105,575	366,211
	% Latino est.	48%	23%	54%	59%	25%	37%
	% Spanish-Surnamed	45%	22%	50%	55%	23%	35%
	% Asian-Surnamed	6%	5%	3%	4%	5%	5%
	% Filipino-Surnamed	1%	1%	1%	1%	1%	1%
	% NH White est.	32%	67%	33%	36%	66%	52%
	% NH Black	12%	4%	10%	1%	3%	5%
Voter Turnout (Nov 2018)	Total	38,001	71,692	29,021	38,459	70,456	247,629
	% Latino est.	44%	19%	50%	53%	21%	33%
	% Spanish-Surnamed	42%	18%	48%	51%	20%	31%
	% Asian-Surnamed	5%	4%	2%	4%	4%	4%
	% Filipino-Surnamed	1%	1%	1%	1%	1%	1%
	% NH White est.	36%	71%	36%	41%	70%	56%
	% NH Black est.	12%	4%	9%	1%	3%	5%
ACS Pop. Est.	Total	201,631	200,621	181,466	185,693	211,858	981,270
Age	age0-19	34%	27%	33%	33%	30%	31%
	age20-60	52%	51%	53%	50%	51%	52%
	age60plus	14%	22%	14%	16%	18%	17%
Immigration	immigrants	27%	14%	24%	28%	15%	21%
	naturalized	33%	58%	37%	29%	62%	41%
Language spoken at home	english	45%	74%	43%	40%	71%	55%
	spanish	44%	15%	46%	56%	16%	35%
	asian-lang	5%	6%	9%	1%	9%	6%
	other lang	6%	5%	2%	3%	5%	4%
Language Fluency	Speaks Eng. "Less than Very Well"	27%	8%	24%	27%	9%	19%
Education (among those age 25+)	hs-grad	47%	43%	46%	45%	49%	46%
	bachelor	9%	23%	8%	9%	19%	14%
	graduatedegree	3%	14%	3%	4%	9%	7%
Child in Household	child-under18	47%	31%	42%	47%	38%	40%
Pct of Pop. Age 16+	employed	62%	63%	58%	60%	63%	61%
Household Income	income 0-25k	26%	17%	39%	26%	16%	24%
	income 25-50k	26%	18%	26%	27%	19%	23%
	income 50-75k	19%	18%	16%	17%	17%	17%
	income 75-200k	26%	39%	17%	27%	41%	31%
	income 200k-plus	2%	9%	1%	3%	7%	5%
Housing Stats	single family	76%	71%	61%	81%	82%	74%
	multi-family	24%	29%	39%	19%	18%	26%
	rented	51%	43%	65%	46%	33%	47%
	owned	49%	57%	35%	54%	67%	53%

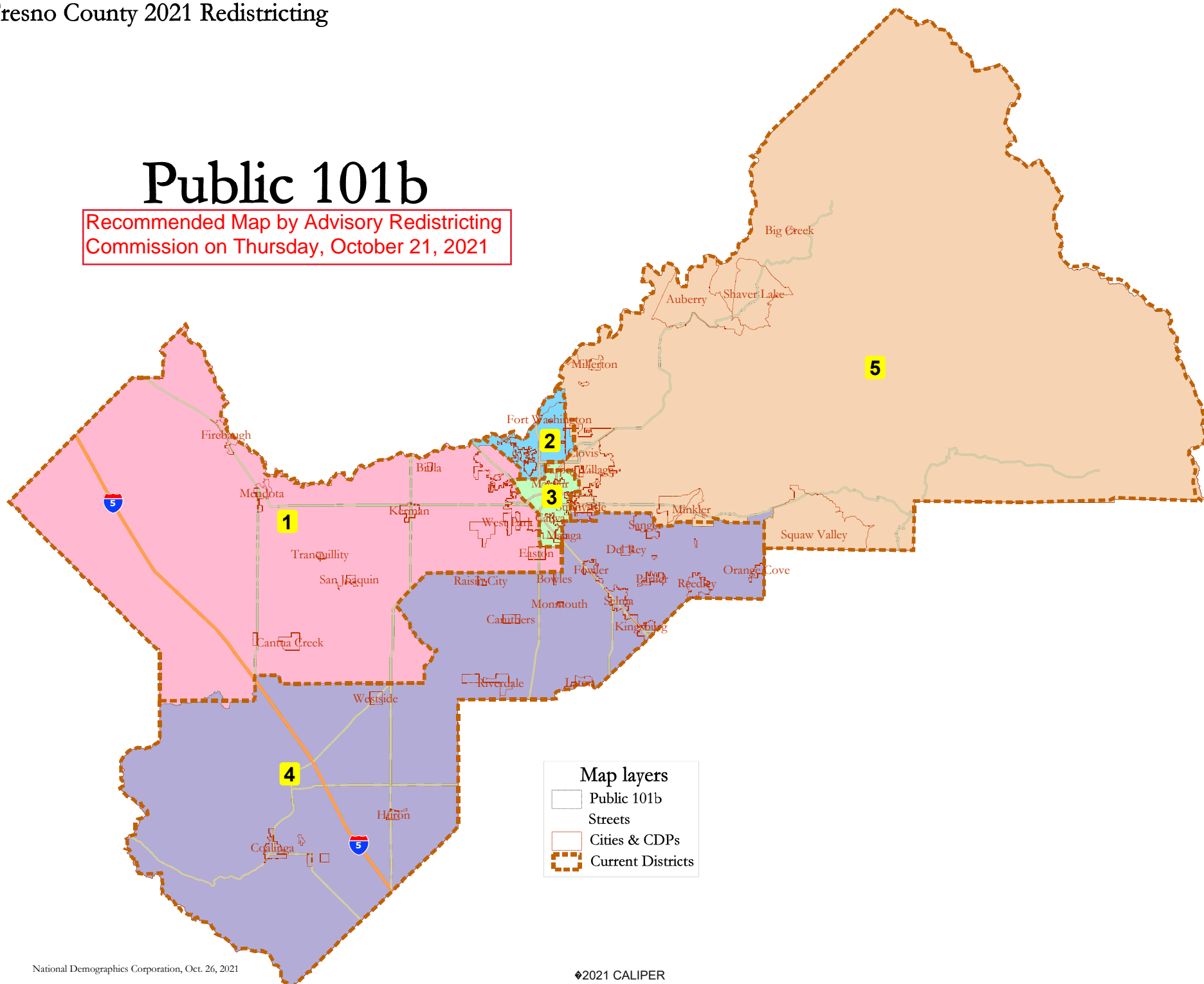
Total population data from the 2010 Decennial Census.

Surname-based Voter Registration and Turnout data from the California Statewide Database.

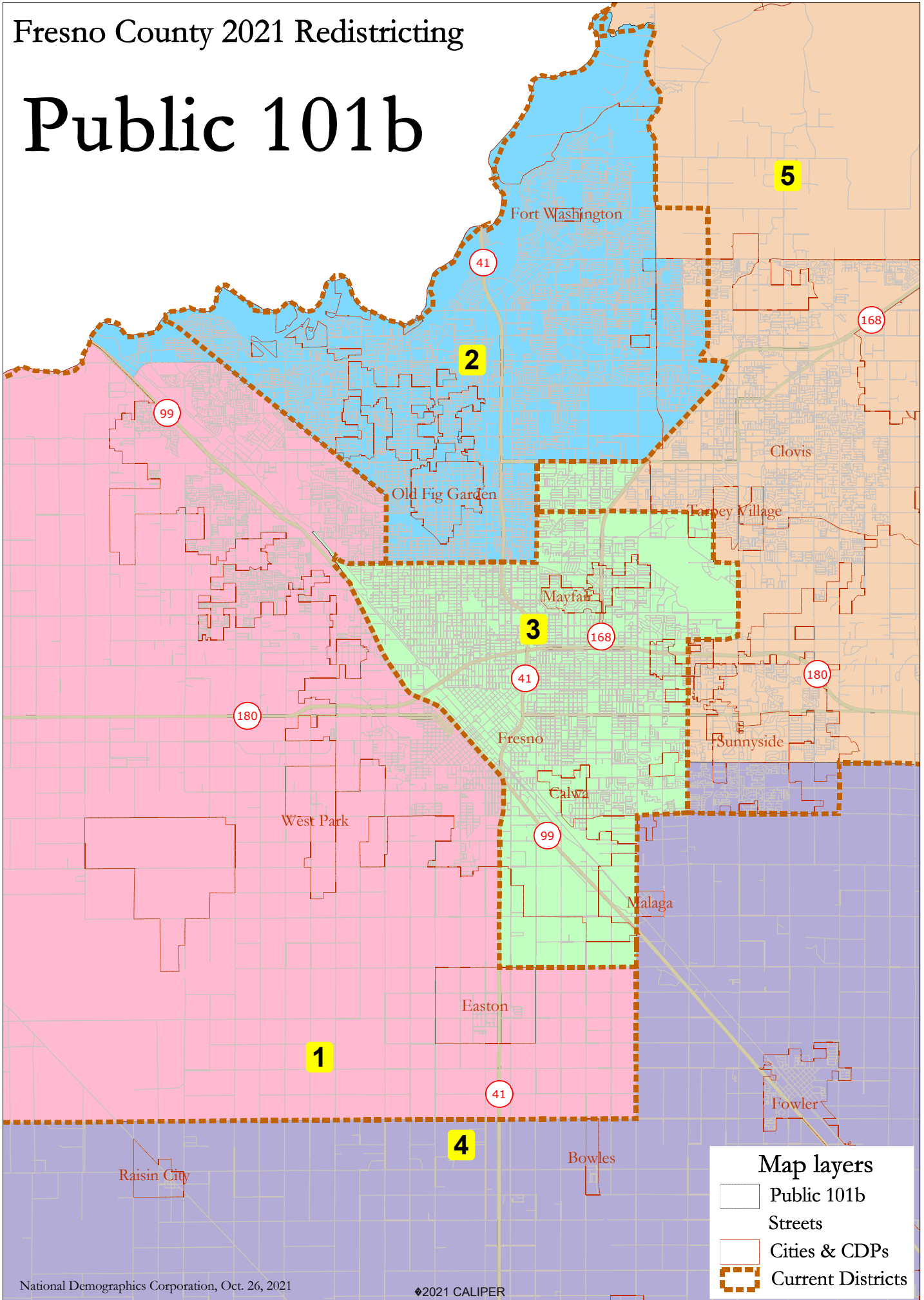
Latino voter registration and turnout data are Spanish-surname counts adjusted using Census Population Department undercount estimates. NH White and NH Black registration and turnout counts estimated by NDC. Citizen Voting Age Pop., Age, Immigration, and other demographics from the 2013-2017 American Community Survey and Special Tabulation 5-year data.

Public 101b

Recommended Map by Advisory Redistricting Commission on Thursday, October 21, 2021



Public 101b



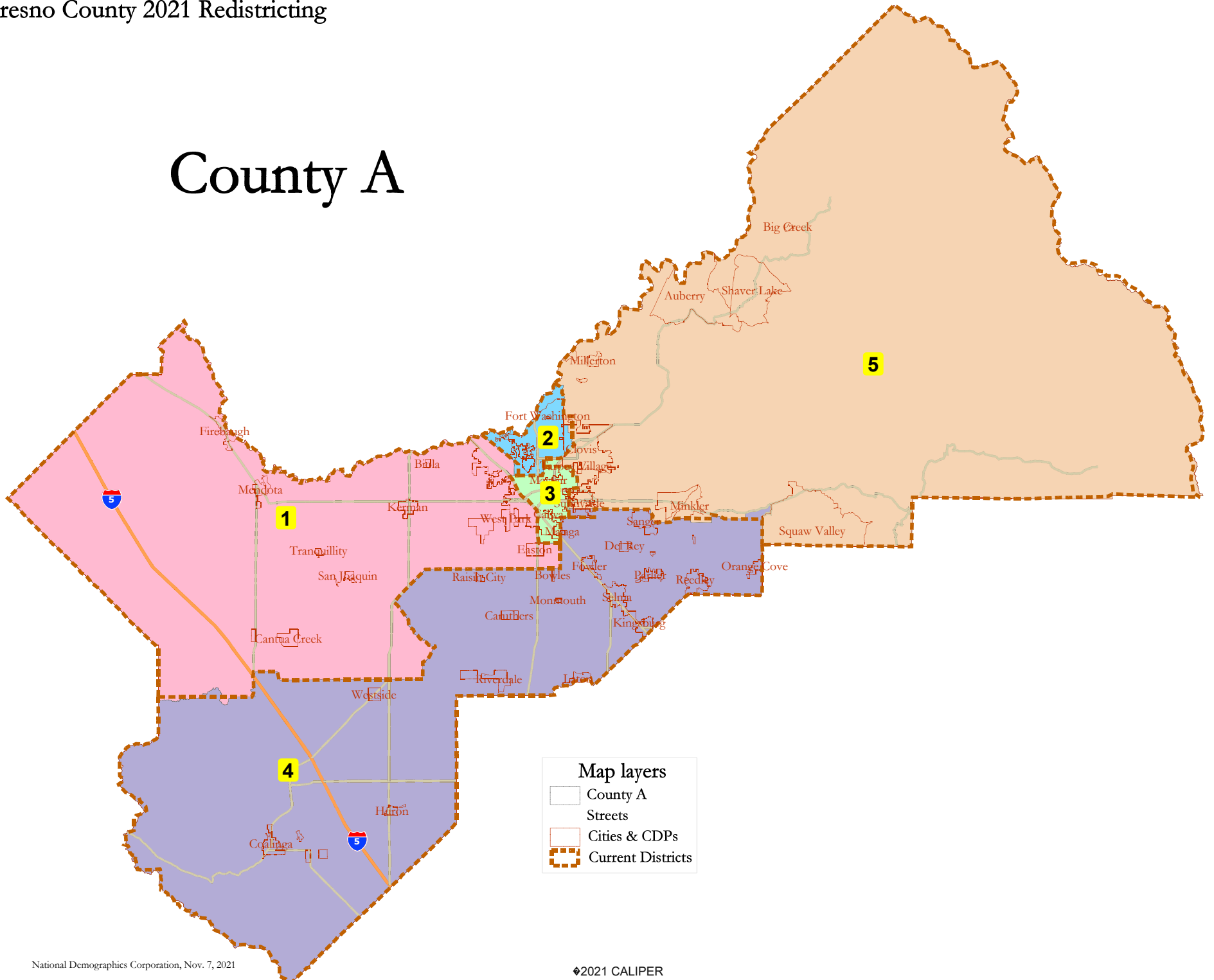
Public 101b							
District		1	2	3	4	5	Total
	Total Pop	200,917	201,595	202,936	201,698	201,384	1,008,530
	Deviation from ideal	-789	-111	1,230	-8	-322	2,019
	% Deviation	-0.39%	-0.06%	0.61%	0.00%	-0.16%	1.00%
Total Pop	% Hisp	63.0%	34%	65%	74%	32%	54%
	% NH White	15%	44%	14%	16%	45%	27%
	% NH Black	8%	6%	7%	1%	3%	5%
	% Asian-American	11%	12%	12%	7%	16%	12%
Citizen Voting Age Pop	Total	102,354	143,568	111,091	102,174	125,860	585,047
	% Hisp	51%	27%	54%	62%	26%	42%
	% NH White	26%	56%	24%	27%	57%	40%
	% NH Black	11%	5%	8%	1%	3%	6%
	% Asian/Pac.Isl.	10%	10%	12%	8%	12%	11%
Voter Registration (Nov 2020)	Total	87,552	123,832	85,123	87,322	120,151	503,980
	% Latino est.	51%	26%	55%	62%	25%	41%
	% Spanish-Surnamed	47%	24%	51%	57%	23%	38%
	% Asian-Surnamed	6%	5%	3%	5%	5%	5%
	% Filipino-Surnamed	1%	1%	1%	1%	1%	1%
	% NH White est.	30%	64%	32%	32%	66%	48%
	% NH Black	14%	5%	11%	2%	3%	6%
Voter Turnout (Nov 2020)	Total	57,968	98,999	50,967	62,050	96,227	366,211
	% Latino est.	48%	23%	53%	57%	23%	37%
	% Spanish-Surnamed	45%	22%	49%	53%	22%	35%
	% Asian-Surnamed	6%	5%	3%	5%	5%	5%
	% Filipino-Surnamed	1%	1%	1%	1%	1%	1%
	% NH White est.	32%	66%	34%	36%	68%	52%
	% NH Black	12%	4%	10%	2%	3%	5%
Voter Turnout (Nov 2018)	Total	36,733	72,164	32,169	41,580	64,983	247,629
	% Latino est.	44%	20%	49%	52%	20%	33%
	% Spanish-Surnamed	42%	19%	46%	50%	19%	31%
	% Asian-Surnamed	5%	4%	2%	4%	4%	4%
	% Filipino-Surnamed	1%	1%	1%	1%	1%	1%
	% NH White est.	36%	70%	37%	40%	73%	56%
	% NH Black est.	13%	4%	9%	1%	2%	5%
ACS Pop. Est.	Total	198,177	202,130	195,431	199,410	186,121	981,270
Age	age0-19	34%	27%	32%	34%	30%	31%
	age20-60	52%	51%	54%	51%	50%	52%
	age60plus	14%	22%	14%	16%	19%	17%
Immigration	immigrants	27%	14%	23%	28%	14%	21%
	naturalized	33%	58%	38%	32%	63%	41%
Language spoken at home	english	45%	74%	44%	41%	73%	55%
	spanish	44%	15%	45%	54%	14%	35%
	asian-lang	5%	6%	9%	2%	8%	6%
	other lang	6%	5%	2%	3%	4%	4%
Language Fluency	Speaks Eng. "Less than Very Well"	27%	8%	23%	26%	8%	19%
Education (among those age 25+)	hs-grad	47%	43%	47%	45%	48%	46%
	bachelor	9%	23%	8%	9%	19%	14%
	graduatedegree	3%	14%	3%	4%	10%	7%
Child in Household	child-under18	47%	31%	41%	47%	38%	40%
Pct of Pop. Age 16+	employed	61%	63%	58%	61%	63%	61%
Household Income	income 0-25k	27%	17%	38%	25%	15%	24%
	income 25-50k	27%	18%	27%	27%	18%	23%
	income 50-75k	19%	18%	16%	17%	16%	17%
	income 75-200k	26%	39%	18%	29%	43%	31%
	income 200k-plus	2%	9%	1%	3%	8%	5%
Housing Stats	single family	75%	72%	60%	82%	84%	74%
	multi-family	25%	28%	40%	18%	16%	26%
	rented	52%	43%	64%	44%	32%	47%
	owned	48%	57%	36%	56%	68%	53%

Total population data from the 2020 Decennial Census.

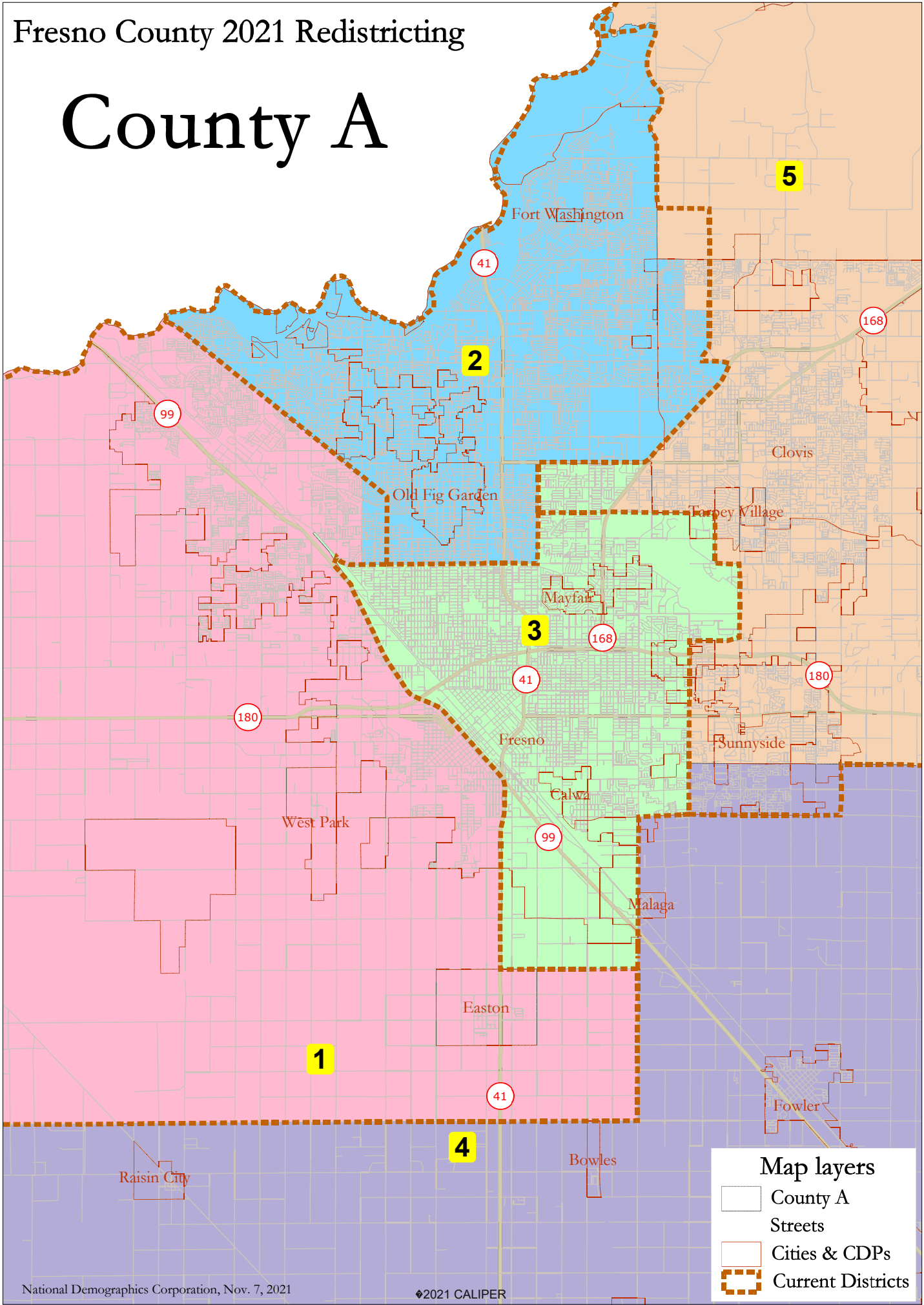
Surname-based Voter Registration and Turnout data from the California Statewide Database.

Latino voter registration and turnout data are Spanish-surname counts adjusted using Census Population Department undercount estimates. NH White and NH Black registration and turnout counts estimated by NDC. Citizen Voting Age Pop., Age, Immigration, and other demographics from the 2015-2019 American Community Survey and Special Tabulation 5-year data.

County A

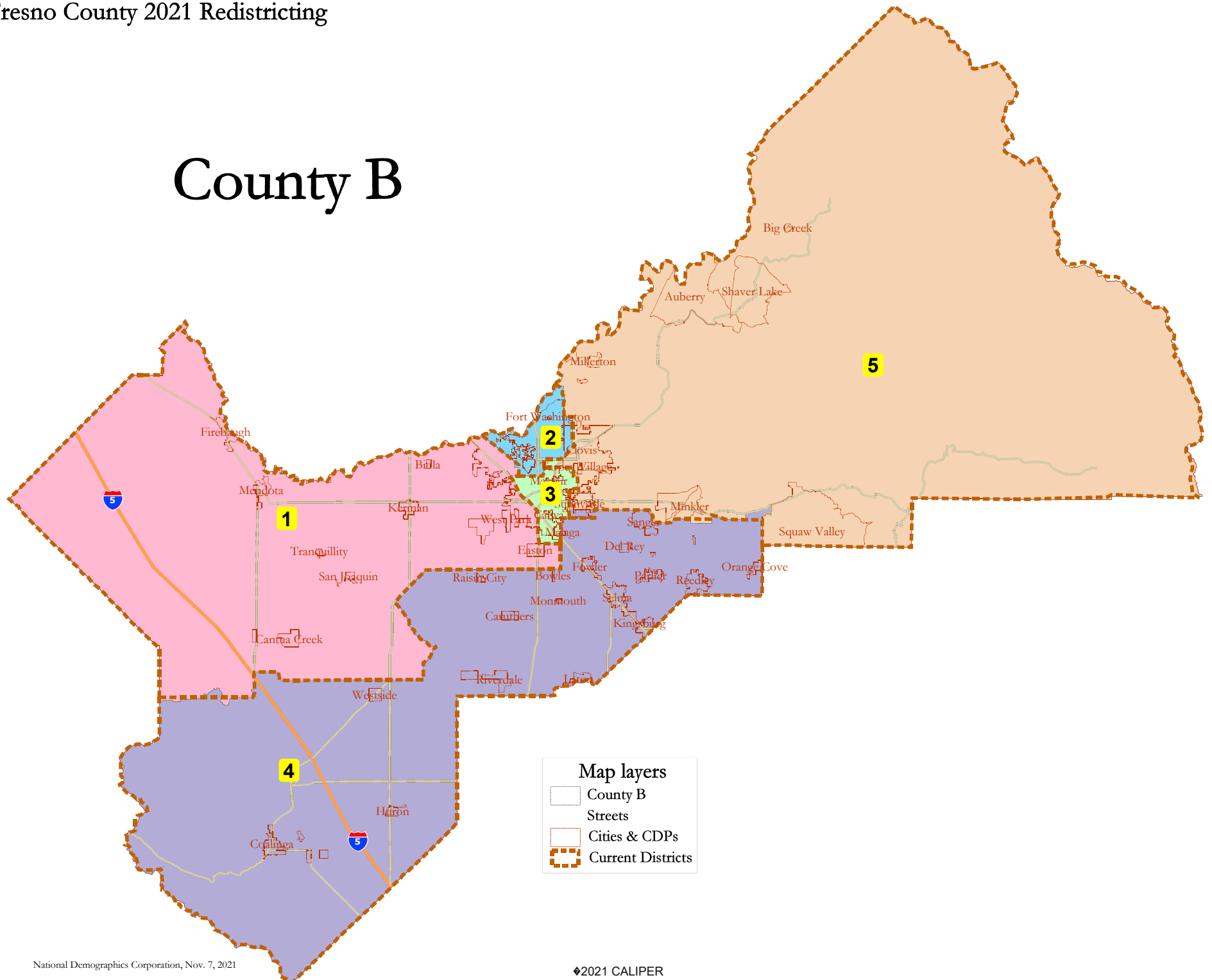


County A

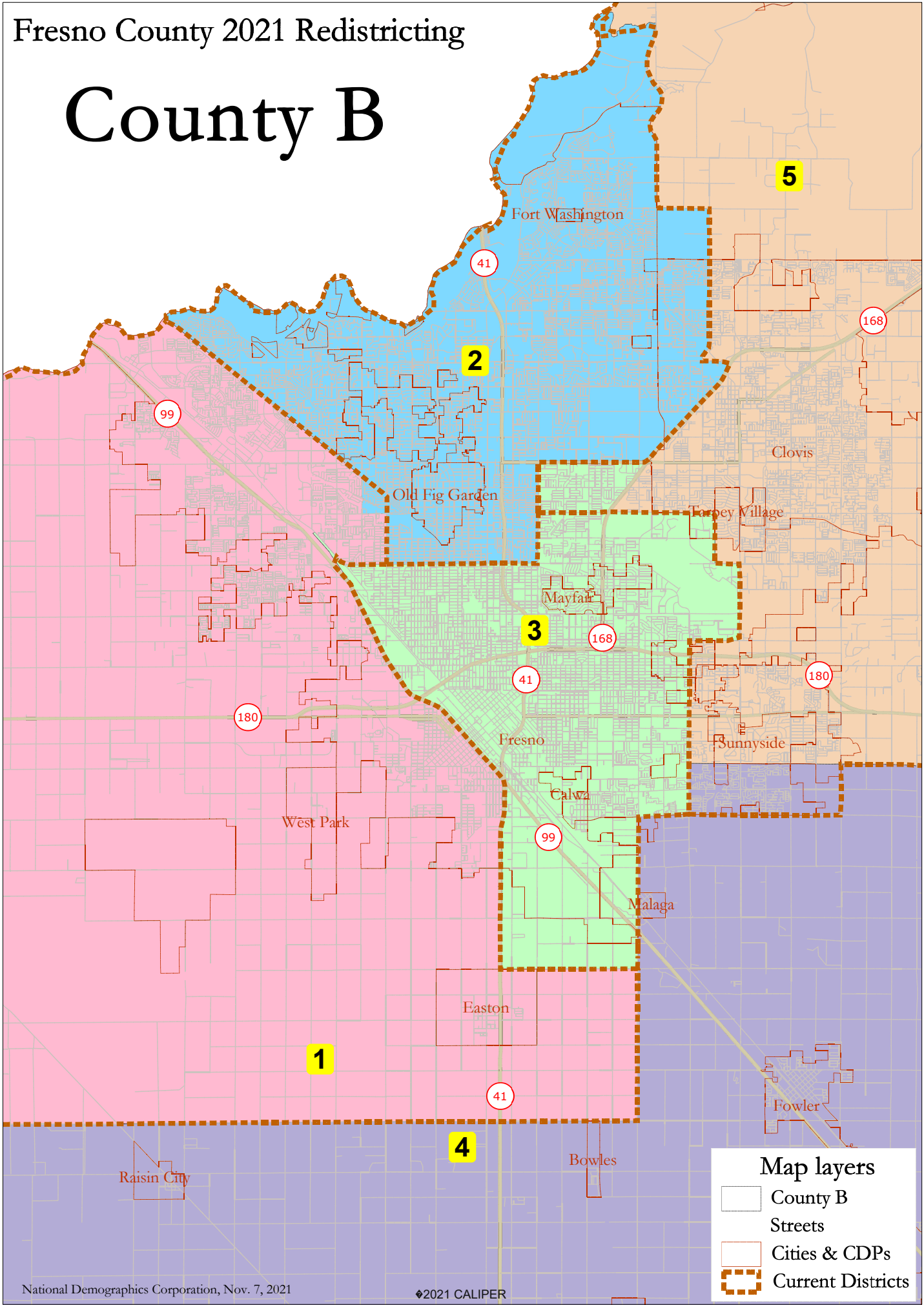


County A							
District		1	2	3	4	5	Total
	Total Pop	197,601	204,911	202,936	201,698	201,384	1,008,530
	Deviation from ideal	-4,105	3,205	1,230	-8	-322	7,310
	% Deviation	-2.04%	1.59%	0.61%	0.00%	-0.16%	3.62%
Total Pop	% Hisp	62.5%	35%	65%	74%	32%	54%
	% NH White	16%	44%	14%	16%	45%	27%
	% NH Black	8%	6%	7%	1%	3%	5%
	% Asian-American	12%	12%	12%	7%	16%	12%
Citizen Voting Age Pop	Total	99,953	145,968	111,091	102,174	125,860	585,047
	% Hisp	51%	28%	54%	62%	26%	42%
	% NH White	26%	56%	24%	27%	57%	40%
	% NH Black	11%	5%	8%	1%	3%	6%
	% Asian/Pac.Isl.	10%	10%	12%	8%	12%	11%
Voter Registration (Nov 2020)	Total	86,463	124,921	85,123	87,322	120,151	503,980
	% Latino est.	50%	26%	55%	62%	25%	41%
	% Spanish-Surnamed	47%	24%	51%	57%	23%	38%
	% Asian-Surnamed	6%	5%	3%	5%	5%	5%
	% Filipino-Surnamed	1%	1%	1%	1%	1%	1%
	% NH White est.	30%	63%	32%	32%	66%	48%
	% NH Black	14%	5%	11%	2%	3%	6%
Voter Turnout (Nov 2020)	Total	57,606	99,361	50,967	62,050	96,227	366,211
	% Latino est.	48%	24%	53%	57%	23%	37%
	% Spanish-Surnamed	45%	22%	49%	53%	22%	35%
	% Asian-Surnamed	7%	5%	3%	5%	5%	5%
	% Filipino-Surnamed	1%	1%	1%	1%	1%	1%
	% NH White est.	32%	66%	34%	36%	68%	52%
	% NH Black	12%	4%	10%	2%	3%	5%
Voter Turnout (Nov 2018)	Total	36,627	72,270	32,169	41,580	64,983	247,629
	% Latino est.	44%	20%	49%	52%	20%	33%
	% Spanish-Surnamed	42%	19%	46%	50%	19%	31%
	% Asian-Surnamed	5%	4%	2%	4%	4%	4%
	% Filipino-Surnamed	1%	1%	1%	1%	1%	1%
	% NH White est.	36%	70%	37%	40%	73%	56%
	% NH Black est.	12%	4%	9%	1%	2%	5%
ACS Pop. Est.	Total	194,634	205,674	195,431	199,410	186,121	981,270
Age	age0-19	34%	27%	32%	34%	30%	31%
	age20-60	52%	51%	54%	51%	50%	52%
	age60plus	13%	22%	14%	16%	19%	17%
Immigration	immigrants	27%	14%	23%	28%	14%	21%
	naturalized	33%	57%	38%	32%	63%	41%
Language spoken at home	english	45%	73%	44%	41%	73%	55%
	spanish	44%	16%	45%	54%	14%	35%
	asian-lang	5%	6%	9%	2%	8%	6%
	other lang	6%	5%	2%	3%	4%	4%
Language Fluency	Speaks Eng. "Less than Very Well"	27%	9%	23%	26%	8%	19%
Education (among those age 25+)	hs-grad	46%	44%	47%	45%	48%	46%
	bachelor	10%	22%	8%	9%	19%	14%
	graduatedegree	4%	14%	3%	4%	10%	7%
Child in Household	child-under18	47%	32%	41%	47%	38%	40%
Pct of Pop. Age 16+	employed	62%	63%	58%	61%	63%	61%
Household Income	income 0-25k	26%	17%	38%	25%	15%	24%
	income 25-50k	26%	19%	27%	27%	18%	23%
	income 50-75k	19%	18%	16%	17%	16%	17%
	income 75-200k	27%	38%	18%	29%	43%	31%
	income 200k-plus	3%	8%	1%	3%	8%	5%
Housing Stats	single family	76%	71%	60%	82%	84%	74%
	multi-family	24%	29%	40%	18%	16%	26%
	rented	51%	44%	64%	44%	32%	47%
	owned	49%	56%	36%	56%	68%	53%
Total population data from the 2020 Decennial Census.							
Surname-based Voter Registration and Turnout data from the California Statewide Database.							
Latino voter registration and turnout data are Spanish-surname counts adjusted using Census Population Department undercount estimates. NH White and NH Black registration and turnout counts estimated by NDC. Citizen Voting Age Pop., Age, Immigration, and other demographics from the 2015-2019 American Community Survey and Special Tabulation 5-year data.							

County B



County B



Map layers

- County B
- Streets
- Cities & CDPs
- Current Districts

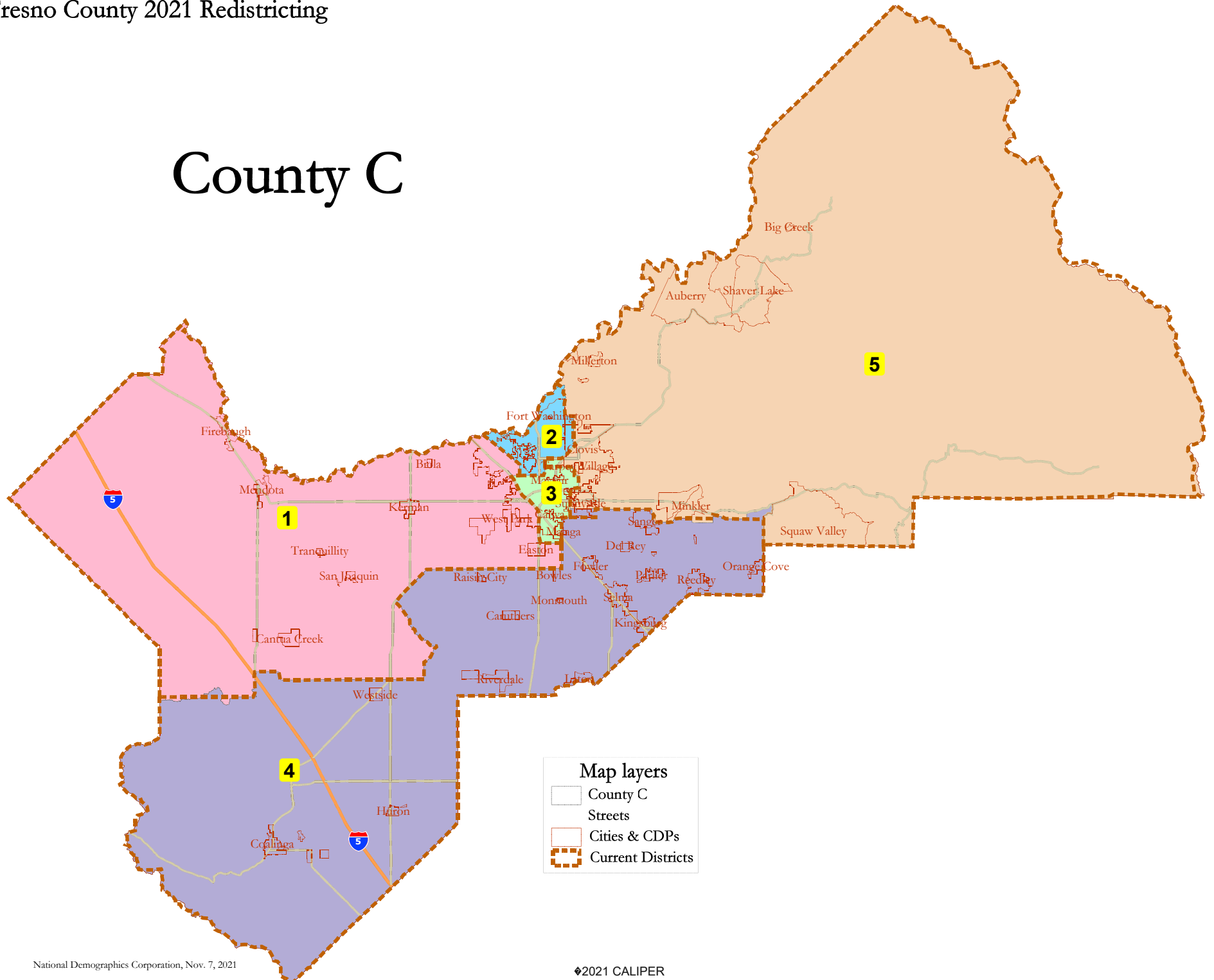
County B							
District		1	2	3	4	5	Total
	Total Pop	202,437	201,934	202,936	201,698	199,525	1,008,530
	Deviation from ideal	731	228	1,230	-8	-2,181	3,411
	% Deviation	0.36%	0.11%	0.61%	0.00%	-1.08%	1.69%
Total Pop	% Hisp	62.7%	34%	65%	74%	32%	54%
	% NH White	16%	45%	14%	16%	45%	27%
	% NH Black	8%	6%	7%	1%	3%	5%
	% Asian-American	12%	12%	12%	7%	16%	12%
Citizen Voting Age Pop	Total	102,743	144,476	111,091	102,174	124,562	585,047
	% Hisp	51%	27%	54%	62%	27%	42%
	% NH White	26%	56%	24%	27%	56%	40%
	% NH Black	11%	5%	8%	1%	3%	6%
	% Asian/Pac.Isl.	10%	10%	12%	8%	12%	11%
Voter Registration (Nov 2020)	Total	88,650	124,009	85,123	87,322	118,876	503,980
	% Latino est.	51%	26%	55%	62%	25%	41%
	% Spanish-Surnamed	47%	24%	51%	57%	23%	38%
	% Asian-Surnamed	6%	5%	3%	5%	5%	5%
	% Filipino-Surnamed	1%	1%	1%	1%	1%	1%
	% NH White est.	30%	64%	32%	32%	66%	48%
	% NH Black	14%	5%	11%	2%	3%	6%
Voter Turnout (Nov 2020)	Total	58,999	99,082	50,967	62,050	95,113	366,211
	% Latino est.	48%	23%	53%	57%	23%	37%
	% Spanish-Surnamed	45%	22%	49%	53%	22%	35%
	% Asian-Surnamed	6%	5%	3%	5%	5%	5%
	% Filipino-Surnamed	1%	1%	1%	1%	1%	1%
	% NH White est.	32%	66%	34%	36%	68%	52%
	% NH Black	12%	4%	10%	2%	3%	5%
Voter Turnout (Nov 2018)	Total	37,449	72,244	32,169	41,580	64,187	247,629
	% Latino est.	44%	20%	49%	52%	20%	33%
	% Spanish-Surnamed	42%	19%	46%	50%	19%	31%
	% Asian-Surnamed	5%	4%	2%	4%	4%	4%
	% Filipino-Surnamed	1%	1%	1%	1%	1%	1%
	% NH White est.	36%	70%	37%	40%	72%	56%
	% NH Black est.	12%	4%	9%	1%	2%	5%
ACS Pop. Est.	Total	198,962	203,291	195,431	199,410	184,176	981,270
Age	age0-19	34%	27%	32%	34%	30%	31%
	age20-60	52%	51%	54%	51%	50%	52%
	age60plus	13%	22%	14%	16%	19%	17%
Immigration	immigrants	27%	14%	23%	28%	14%	21%
	naturalized	33%	58%	38%	32%	63%	41%
Language spoken at home	english	45%	74%	44%	41%	73%	55%
	spanish	44%	15%	45%	54%	14%	35%
	asian-lang	5%	6%	9%	2%	8%	6%
	other lang	6%	5%	2%	3%	4%	4%
Language Fluency	Speaks Eng. "Less than Very Well"	27%	8%	23%	26%	8%	19%
Education (among those age 25+)	hs-grad	47%	43%	47%	45%	49%	46%
	bachelor	9%	23%	8%	9%	19%	14%
	graduatedegree	3%	14%	3%	4%	10%	7%
Child in Household	child-under18	47%	31%	41%	47%	38%	40%
Pct of Pop. Age 16+	employed	62%	63%	58%	61%	63%	61%
Household Income	income 0-25k	26%	17%	38%	25%	15%	24%
	income 25-50k	26%	19%	27%	27%	19%	23%
	income 50-75k	19%	18%	16%	17%	16%	17%
	income 75-200k	26%	38%	18%	29%	42%	31%
	income 200k-plus	2%	9%	1%	3%	8%	5%
Housing Stats	single family	76%	71%	60%	82%	83%	74%
	multi-family	24%	29%	40%	18%	17%	26%
	rented	51%	43%	64%	44%	32%	47%
	owned	49%	57%	36%	56%	68%	53%

Total population data from the 2020 Decennial Census.

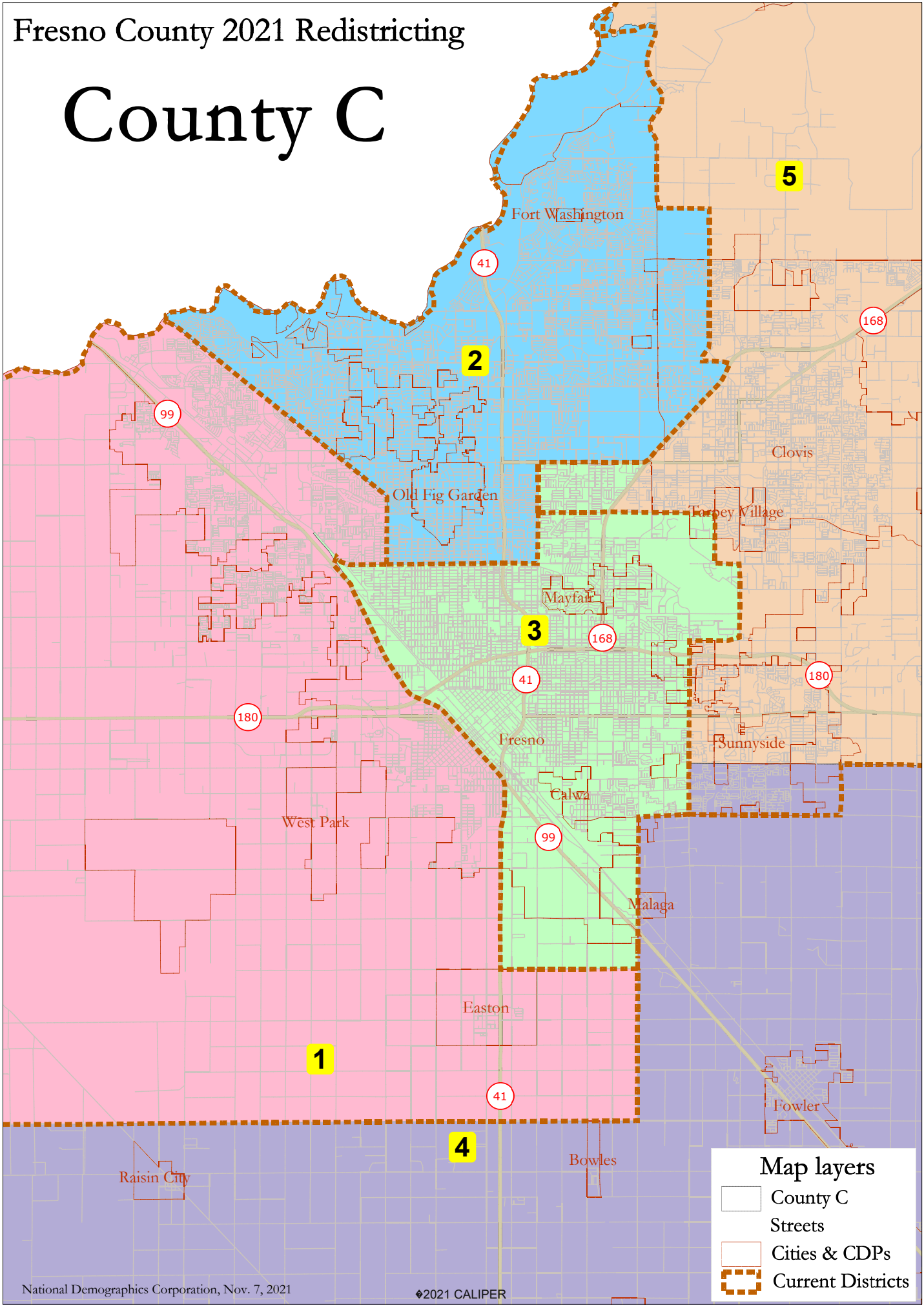
Surname-based Voter Registration and Turnout data from the California Statewide Database.

Latino voter registration and turnout data are Spanish-surname counts adjusted using Census Population Department undercount estimates. NH White and NH Black registration and turnout counts estimated by NDC. Citizen Voting Age Pop., Age, Immigration, and other demographics from the 2015-2019 American Community Survey and Special Tabulation 5-year data.

County C



County C



Map layers

- County C
- Streets
- Cities & CDPs
- Current Districts

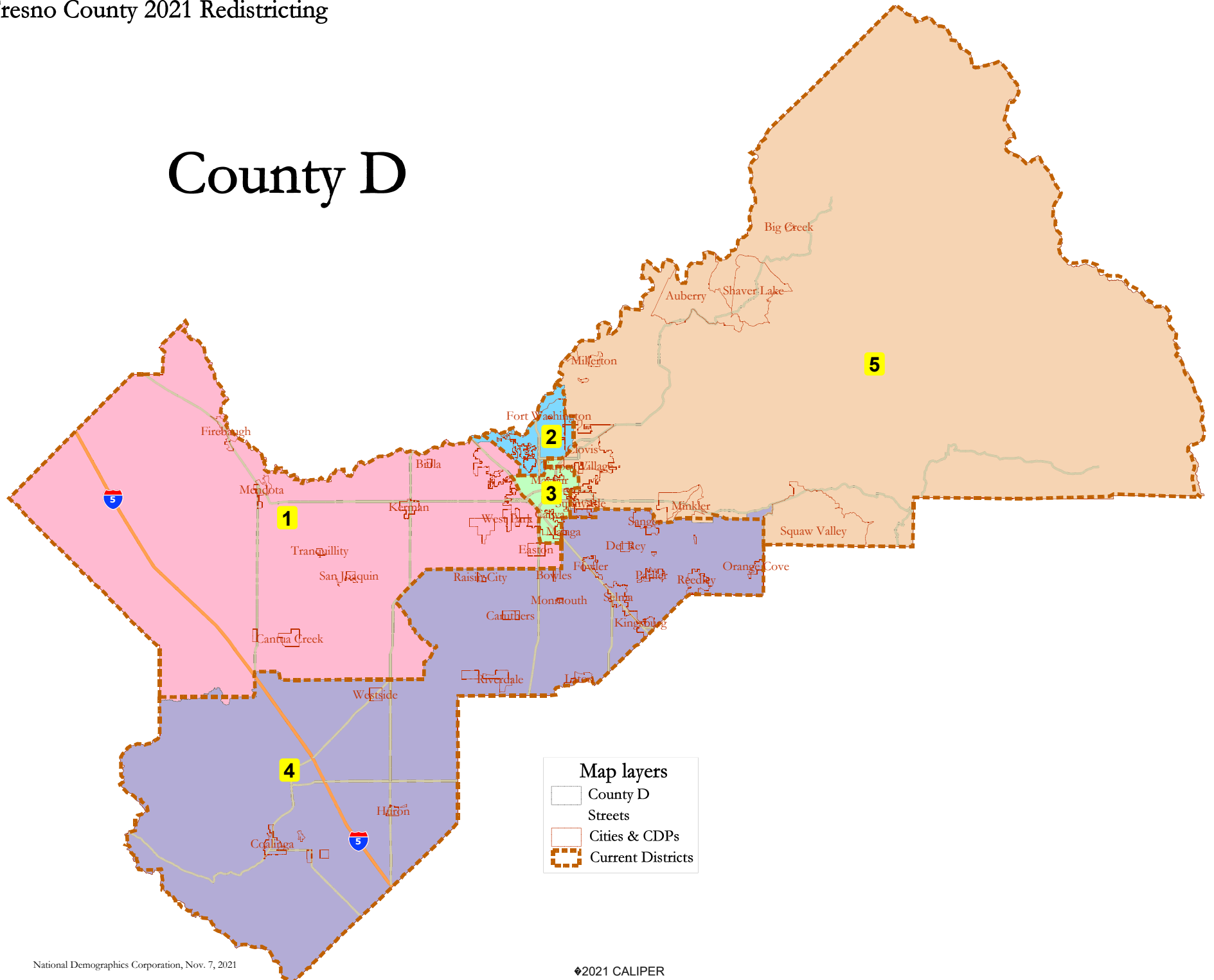
County C							
District		1	2	3	4	5	Total
	Total Pop	205,264	199,107	202,936	201,698	199,525	1,008,530
	Deviation from ideal	3,558	-2,599	1,230	-8	-2,181	6,157
	% Deviation	1.76%	-1.29%	0.61%	0.00%	-1.08%	3.05%
Total Pop	% Hisp	62.5%	34%	65%	74%	32%	54%
	% NH White	16%	45%	14%	16%	45%	27%
	% NH Black	8%	6%	7%	1%	3%	5%
	% Asian-American	12%	12%	12%	7%	16%	12%
Citizen Voting Age Pop	Total	104,729	142,491	111,091	102,174	124,562	585,047
	% Hisp	51%	27%	54%	62%	27%	42%
	% NH White	26%	57%	24%	27%	56%	40%
	% NH Black	11%	5%	8%	1%	3%	6%
	% Asian/Pac.Isl.	10%	10%	12%	8%	12%	11%
Voter Registration (Nov 2020)	Total	90,010	122,649	85,123	87,322	118,876	503,980
	% Latino est.	51%	25%	55%	62%	25%	41%
	% Spanish-Surnamed	47%	24%	51%	57%	23%	38%
	% Asian-Surnamed	6%	5%	3%	5%	5%	5%
	% Filipino-Surnamed	1%	1%	1%	1%	1%	1%
	% NH White est.	30%	64%	32%	32%	66%	48%
	% NH Black	14%	4%	11%	2%	3%	6%
Voter Turnout (Nov 2020)	Total	59,903	98,178	50,967	62,050	95,113	366,211
	% Latino est.	48%	23%	53%	57%	23%	37%
	% Spanish-Surnamed	45%	22%	49%	53%	22%	35%
	% Asian-Surnamed	6%	5%	3%	5%	5%	5%
	% Filipino-Surnamed	1%	1%	1%	1%	1%	1%
	% NH White est.	32%	67%	34%	36%	68%	52%
	% NH Black	12%	4%	10%	2%	3%	5%
Voter Turnout (Nov 2018)	Total	38,001	71,692	32,169	41,580	64,187	247,629
	% Latino est.	44%	19%	49%	52%	20%	33%
	% Spanish-Surnamed	42%	18%	46%	50%	19%	31%
	% Asian-Surnamed	5%	4%	2%	4%	4%	4%
	% Filipino-Surnamed	1%	1%	1%	1%	1%	1%
	% NH White est.	36%	71%	37%	40%	72%	56%
	% NH Black est.	12%	4%	9%	1%	2%	5%
ACS Pop. Est.	Total	201,631	200,621	195,431	199,410	184,176	981,270
Age	age0-19	34%	27%	32%	34%	30%	31%
	age20-60	52%	51%	54%	51%	50%	52%
	age60plus	14%	22%	14%	16%	19%	17%
Immigration	immigrants	27%	14%	23%	28%	14%	21%
	naturalized	33%	58%	38%	32%	63%	41%
Language spoken at home	english	45%	74%	44%	41%	73%	55%
	spanish	44%	15%	45%	54%	14%	35%
	asian-lang	5%	6%	9%	2%	8%	6%
	other lang	6%	5%	2%	3%	4%	4%
Language Fluency	Speaks Eng. "Less than Very Well"	27%	8%	23%	26%	8%	19%
Education (among those age 25+)	hs-grad	47%	43%	47%	45%	49%	46%
	bachelor	9%	23%	8%	9%	19%	14%
	graduatedegree	3%	14%	3%	4%	10%	7%
Child in Household	child-under18	47%	31%	41%	47%	38%	40%
Pct of Pop. Age 16+	employed	62%	63%	58%	61%	63%	61%
Household Income	income 0-25k	26%	17%	38%	25%	15%	24%
	income 25-50k	26%	18%	27%	27%	19%	23%
	income 50-75k	19%	18%	16%	17%	16%	17%
	income 75-200k	26%	39%	18%	29%	42%	31%
	income 200k-plus	2%	9%	1%	3%	8%	5%
Housing Stats	single family	76%	71%	60%	82%	83%	74%
	multi-family	24%	29%	40%	18%	17%	26%
	rented	51%	43%	64%	44%	32%	47%
	owned	49%	57%	36%	56%	68%	53%

Total population data from the 2020 Decennial Census.

Surname-based Voter Registration and Turnout data from the California Statewide Database.

Latino voter registration and turnout data are Spanish-surname counts adjusted using Census Population Department undercount estimates. NH White and NH Black registration and turnout counts estimated by NDC. Citizen Voting Age Pop., Age, Immigration, and other demographics from the 2015-2019 American Community Survey and Special Tabulation 5-year data.

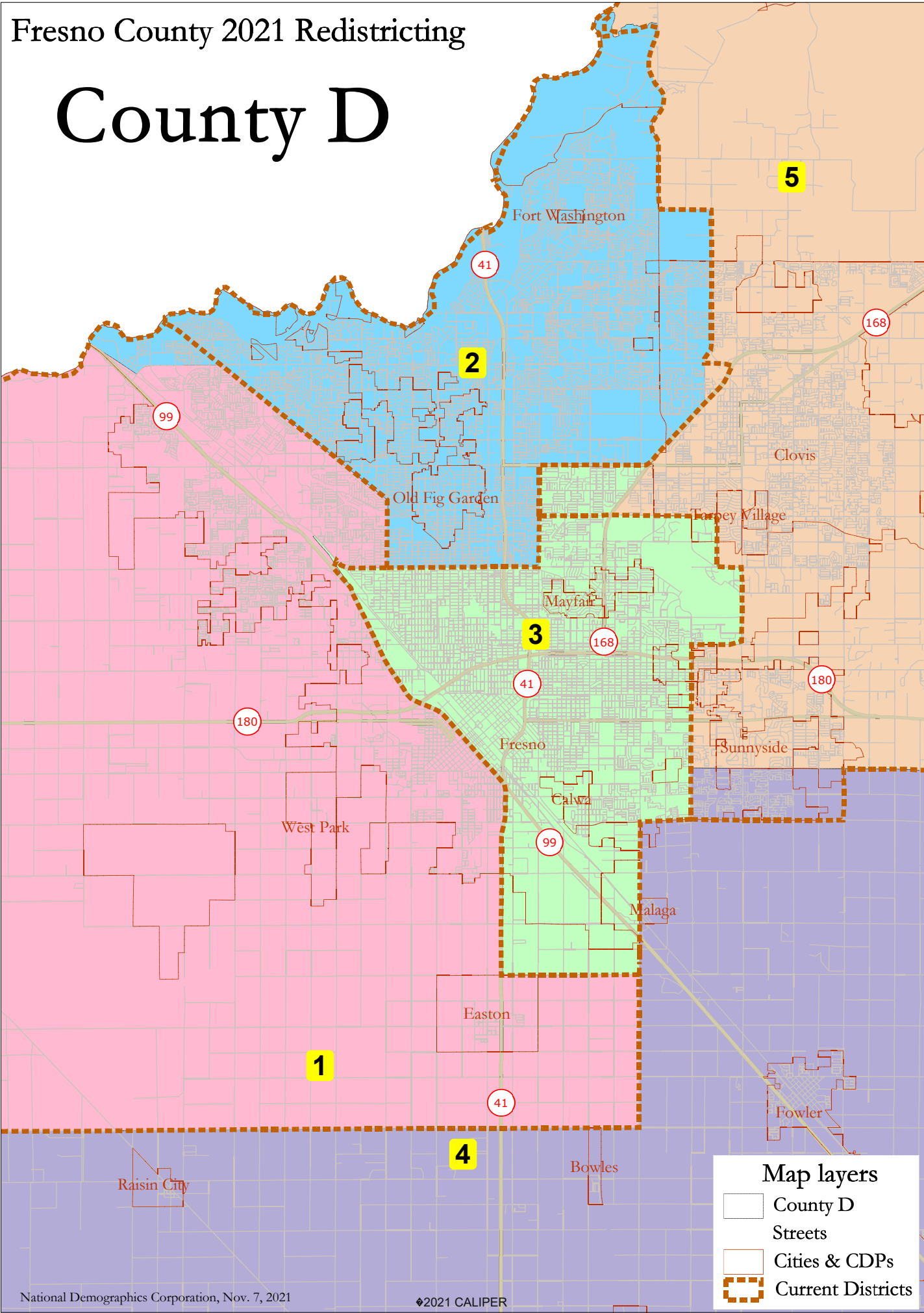
County D



Map layers

- County D
- Streets
- Cities & CDPs
- Current Districts

County D



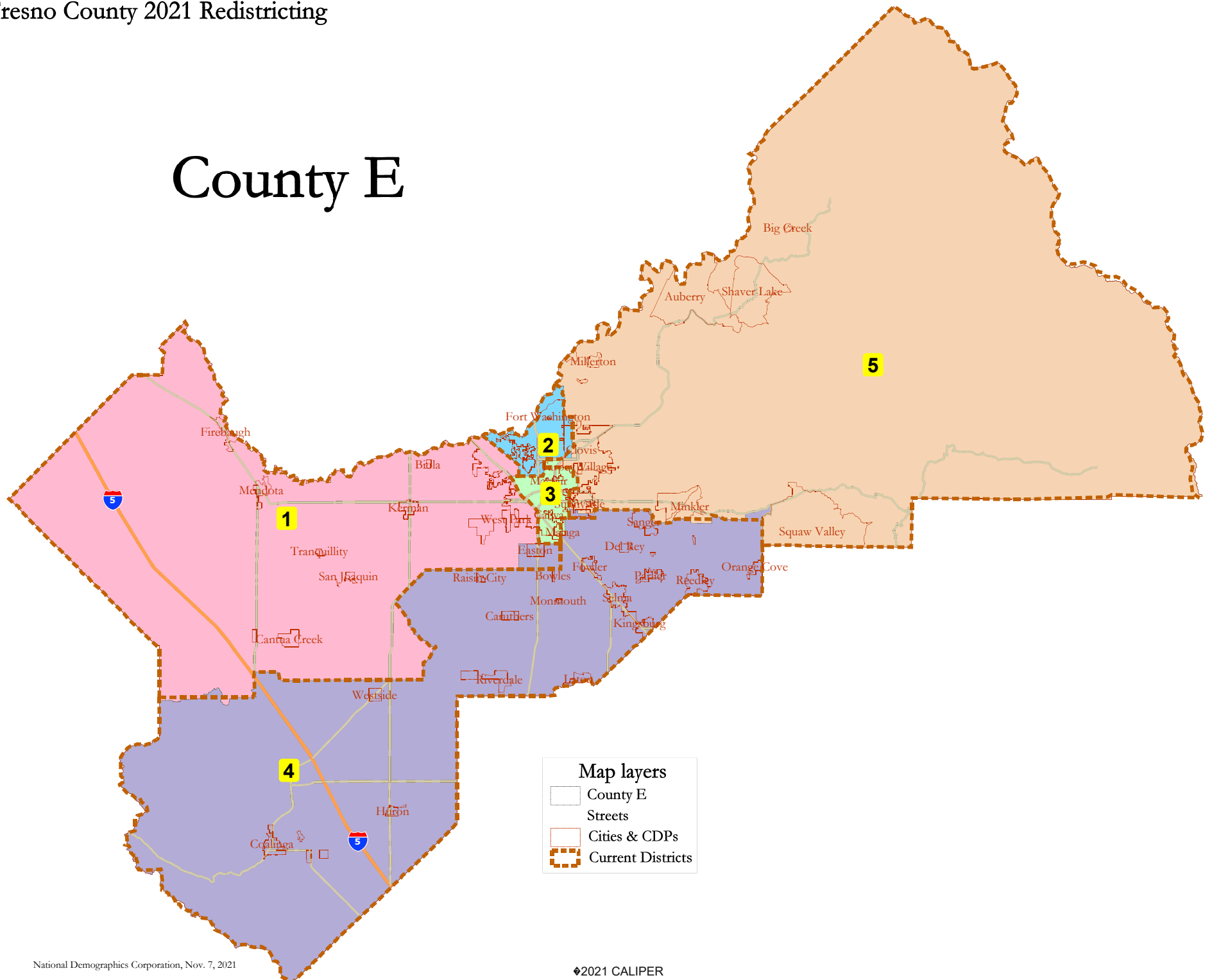
County D							
District		1	2	3	4	5	Total
	Total Pop	200,917	202,980	202,936	201,698	199,999	1,008,530
	Deviation from ideal	-789	1,274	1,230	-8	-1,707	2,981
	% Deviation	-0.39%	0.63%	0.61%	0.00%	-0.85%	1.48%
Total Pop	% Hisp	63.0%	34%	65%	74%	32%	54%
	% NH White	15%	44%	14%	16%	45%	27%
	% NH Black	8%	6%	7%	1%	3%	5%
	% Asian-American	11%	12%	12%	7%	16%	12%
Citizen Voting Age Pop	Total	102,354	144,618	111,091	102,174	124,810	585,047
	% Hisp	51%	27%	54%	62%	27%	42%
	% NH White	26%	56%	24%	27%	57%	40%
	% NH Black	11%	5%	8%	1%	3%	6%
	% Asian/Pac.Isl.	10%	10%	12%	8%	12%	11%
Voter Registration (Nov 2020)	Total	87,552	124,829	85,123	87,322	119,154	503,980
	% Latino est.	51%	26%	55%	62%	25%	41%
	% Spanish-Surnamed	47%	24%	51%	57%	23%	38%
	% Asian-Surnamed	6%	5%	3%	5%	5%	5%
	% Filipino-Surnamed	1%	1%	1%	1%	1%	1%
	% NH White est.	30%	64%	32%	32%	66%	48%
	% NH Black	14%	5%	11%	2%	3%	6%
Voter Turnout (Nov 2020)	Total	57,968	99,881	50,967	62,050	95,345	366,211
	% Latino est.	48%	23%	53%	57%	23%	37%
	% Spanish-Surnamed	45%	22%	49%	53%	22%	35%
	% Asian-Surnamed	6%	5%	3%	5%	5%	5%
	% Filipino-Surnamed	1%	1%	1%	1%	1%	1%
	% NH White est.	32%	66%	34%	36%	68%	52%
	% NH Black	12%	4%	10%	2%	3%	5%
Voter Turnout (Nov 2018)	Total	36,733	72,747	32,169	41,580	64,400	247,629
	% Latino est.	44%	20%	49%	52%	20%	33%
	% Spanish-Surnamed	42%	19%	46%	50%	19%	31%
	% Asian-Surnamed	5%	4%	2%	4%	4%	4%
	% Filipino-Surnamed	1%	1%	1%	1%	1%	1%
	% NH White est.	36%	70%	37%	40%	72%	56%
	% NH Black est.	13%	4%	9%	1%	2%	5%
ACS Pop. Est.	Total	198,177	203,761	195,431	199,410	184,490	981,270
Age	age0-19	34%	27%	32%	34%	30%	31%
	age20-60	52%	51%	54%	51%	50%	52%
	age60plus	14%	22%	14%	16%	19%	17%
Immigration	immigrants	27%	14%	23%	28%	14%	21%
	naturalized	33%	58%	38%	32%	63%	41%
Language spoken at home	english	45%	74%	44%	41%	73%	55%
	spanish	44%	15%	45%	54%	14%	35%
	asian-lang	5%	6%	9%	2%	8%	6%
	other lang	6%	5%	2%	3%	4%	4%
Language Fluency	Speaks Eng. "Less than Very Well"	27%	8%	23%	26%	8%	19%
Education (among those age 25+)	hs-grad	47%	43%	47%	45%	49%	46%
	bachelor	9%	23%	8%	9%	19%	14%
	graduatedegree	3%	14%	3%	4%	10%	7%
Child in Household	child-under18	47%	32%	41%	47%	38%	40%
Pct of Pop. Age 16+	employed	61%	63%	58%	61%	63%	61%
Household Income	income 0-25k	27%	16%	38%	25%	15%	24%
	income 25-50k	27%	18%	27%	27%	19%	23%
	income 50-75k	19%	18%	16%	17%	16%	17%
	income 75-200k	26%	39%	18%	29%	42%	31%
	income 200k-plus	2%	9%	1%	3%	8%	5%
Housing Stats	single family	75%	72%	60%	82%	83%	74%
	multi-family	25%	28%	40%	18%	17%	26%
	rented	52%	43%	64%	44%	32%	47%
	owned	48%	57%	36%	56%	68%	53%

Total population data from the 2020 Decennial Census.

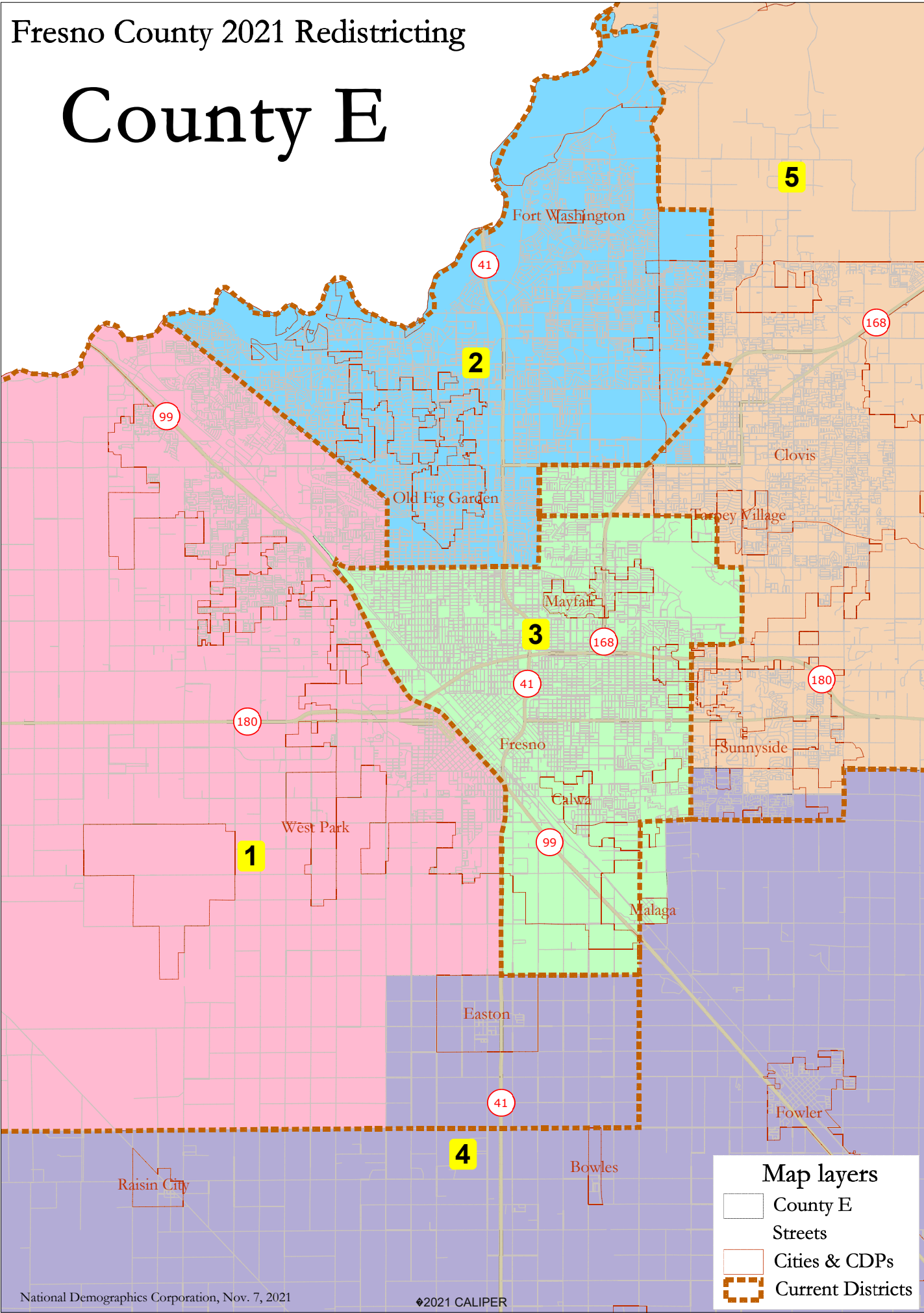
Surname-based Voter Registration and Turnout data from the California Statewide Database.

Latino voter registration and turnout data are Spanish-surname counts adjusted using Census Population Department undercount estimates. NH White and NH Black registration and turnout counts estimated by NDC. Citizen Voting Age Pop., Age, Immigration, and other demographics from the 2015-2019 American Community Survey and Special Tabulation 5-year data.

County E



County E

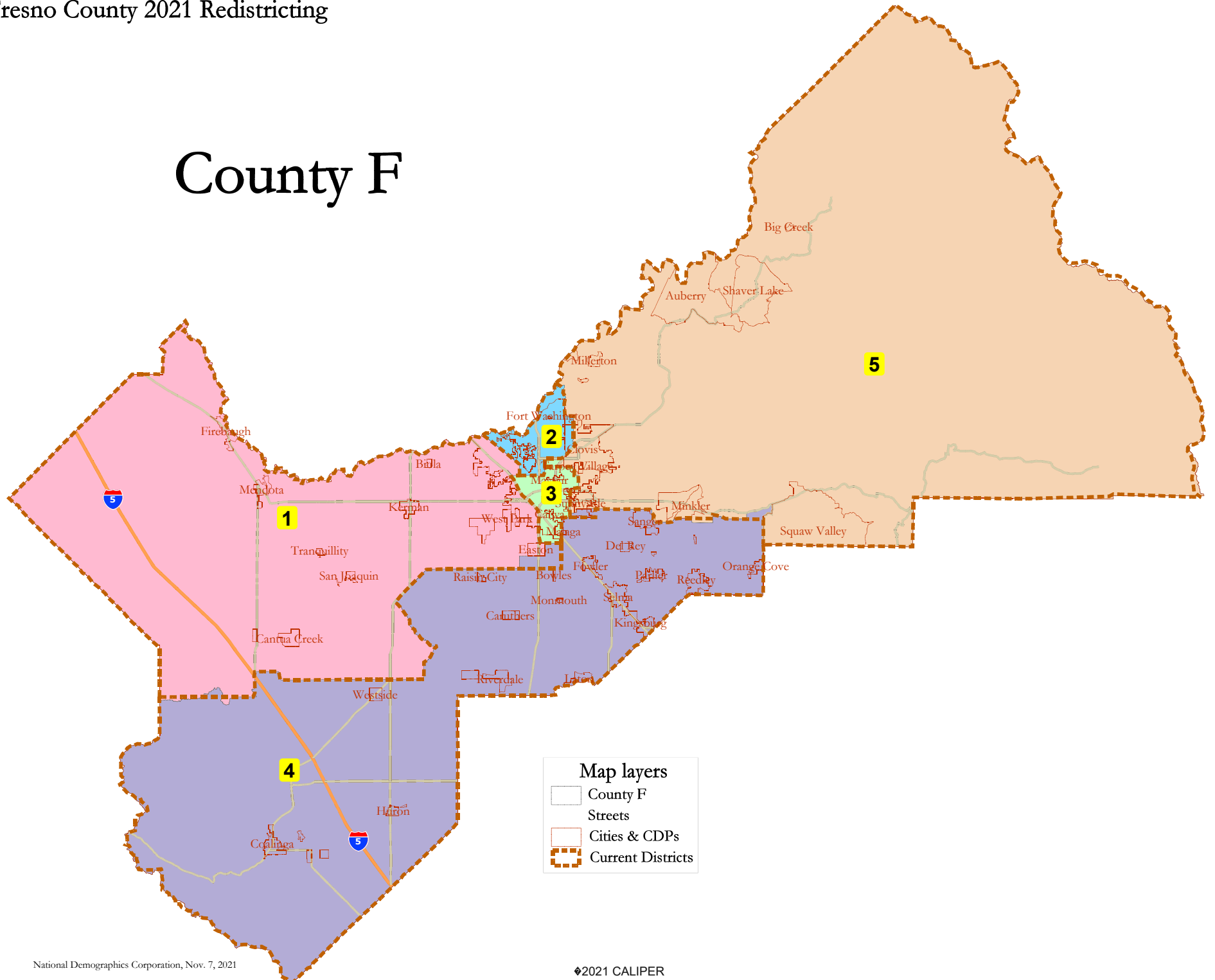


Map layers

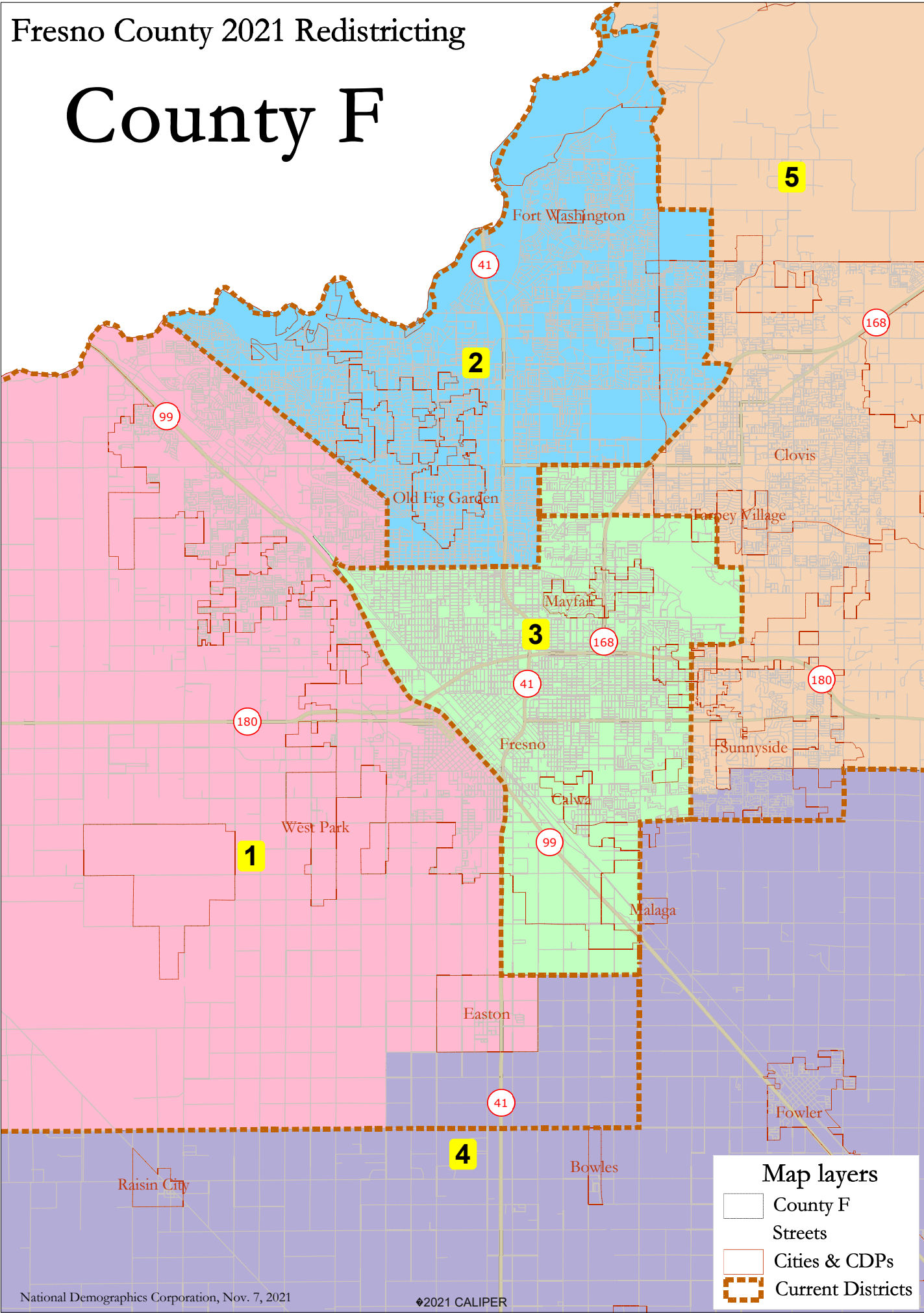
- County E
- Streets
- Cities & CDPs
- Current Districts

County E							
District		1	2	3	4	5	Total
	Total Pop	200,969	203,825	203,982	200,290	199,464	1,008,530
	Deviation from ideal	-737	2,119	2,276	-1,416	-2,242	4,518
	% Deviation	-0.37%	1.05%	1.13%	-0.70%	-1.11%	2.24%
Total Pop	% Hisp	62.5%	34%	65%	75%	32%	54%
	% NH White	15%	45%	14%	16%	44%	27%
	% NH Black	8%	6%	7%	1%	3%	5%
	% Asian-American	12%	12%	12%	6%	17%	12%
Citizen Voting Age Pop	Total	102,129	145,929	111,803	101,522	123,664	585,047
	% Hisp	51%	27%	54%	62%	27%	42%
	% NH White	26%	57%	24%	28%	55%	40%
	% NH Black	11%	5%	8%	1%	3%	6%
	% Asian/Pac.Isl.	11%	10%	12%	7%	13%	11%
Voter Registration (Nov 2020)	Total	87,748	124,854	85,650	86,699	119,029	503,980
	% Latino est.	50%	26%	55%	62%	25%	41%
	% Spanish-Surnamed	47%	24%	51%	58%	23%	38%
	% Asian-Surnamed	6%	5%	3%	4%	5%	5%
	% Filipino-Surnamed	1%	1%	1%	1%	1%	1%
	% NH White est.	30%	64%	32%	32%	66%	48%
	% NH Black	14%	4%	11%	1%	3%	6%
Voter Turnout (Nov 2020)	Total	58,290	99,801	51,281	61,648	95,191	366,211
	% Latino est.	48%	23%	53%	57%	23%	37%
	% Spanish-Surnamed	45%	22%	49%	53%	22%	35%
	% Asian-Surnamed	6%	5%	3%	5%	5%	5%
	% Filipino-Surnamed	1%	1%	1%	1%	1%	1%
	% NH White est.	32%	67%	34%	36%	68%	52%
	% NH Black	13%	4%	10%	1%	3%	5%
Voter Turnout (Nov 2018)	Total	36,833	72,743	32,406	41,610	64,037	247,629
	% Latino est.	44%	19%	49%	52%	20%	33%
	% Spanish-Surnamed	42%	18%	47%	49%	19%	31%
	% Asian-Surnamed	5%	4%	2%	4%	4%	4%
	% Filipino-Surnamed	1%	1%	1%	1%	1%	1%
	% NH White est.	35%	71%	37%	41%	72%	56%
	% NH Black est.	13%	4%	9%	1%	3%	5%
ACS Pop. Est.	Total	197,024	205,660	196,640	198,449	183,497	981,270
Age	age0-19	34%	27%	32%	34%	30%	31%
	age20-60	52%	51%	54%	51%	50%	52%
	age60plus	13%	22%	14%	16%	19%	17%
Immigration	immigrants	27%	14%	24%	28%	14%	21%
	naturalized	33%	57%	38%	31%	64%	41%
Language spoken at home	english	45%	74%	44%	41%	73%	55%
	spanish	44%	15%	45%	55%	15%	35%
	asian-lang	5%	6%	9%	2%	8%	6%
	other lang	6%	5%	2%	3%	4%	4%
Language Fluency	Speaks Eng. "Less than Very Well"	27%	8%	23%	26%	9%	19%
Education (among those age 25+)	hs-grad	47%	44%	47%	46%	48%	46%
	bachelor	9%	23%	8%	9%	19%	14%
	graduatedegree	3%	14%	3%	4%	10%	7%
Child in Household	child-under18	47%	31%	41%	47%	39%	40%
Pct of Pop. Age 16+	employed	62%	63%	58%	60%	63%	61%
Household Income	income 0-25k	27%	17%	38%	25%	15%	24%
	income 25-50k	26%	19%	27%	27%	18%	23%
	income 50-75k	19%	18%	16%	17%	16%	17%
	income 75-200k	26%	38%	18%	28%	43%	31%
	income 200k-plus	2%	9%	1%	3%	8%	5%
Housing Stats	single family	75%	71%	60%	82%	85%	74%
	multi-family	25%	29%	40%	18%	15%	26%
	rented	52%	43%	64%	44%	30%	47%
	owned	48%	57%	36%	56%	70%	53%
Total population data from the 2020 Decennial Census.							
Surname-based Voter Registration and Turnout data from the California Statewide Database.							
Latino voter registration and turnout data are Spanish-surname counts adjusted using Census Population Department undercount estimates. NH White and NH Black registration and turnout counts estimated by NDC. Citizen Voting Age Pop., Age, Immigration, and other demographics from the 2015-2019 American Community Survey and Special Tabulation 5-year data.							

County F

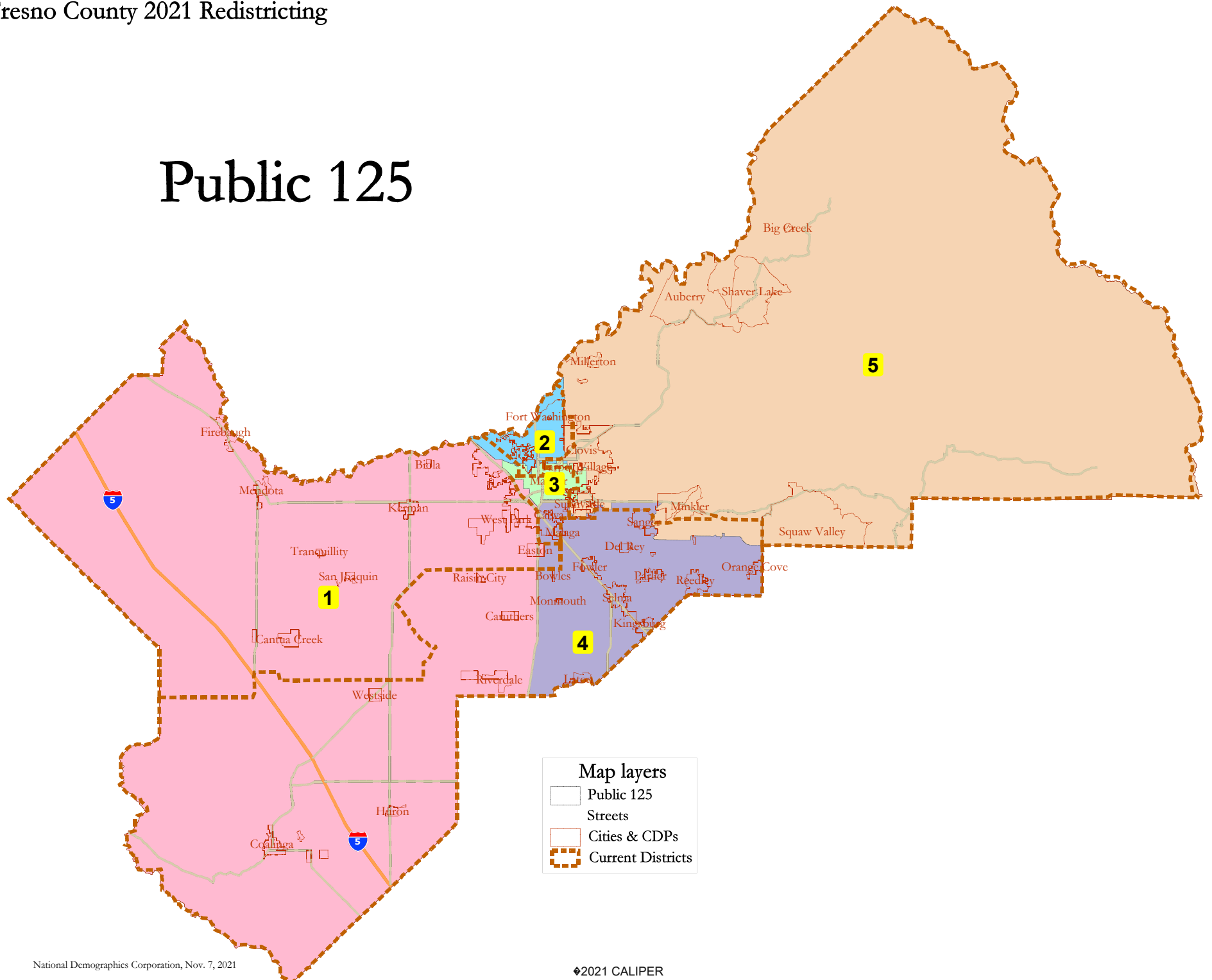


County F

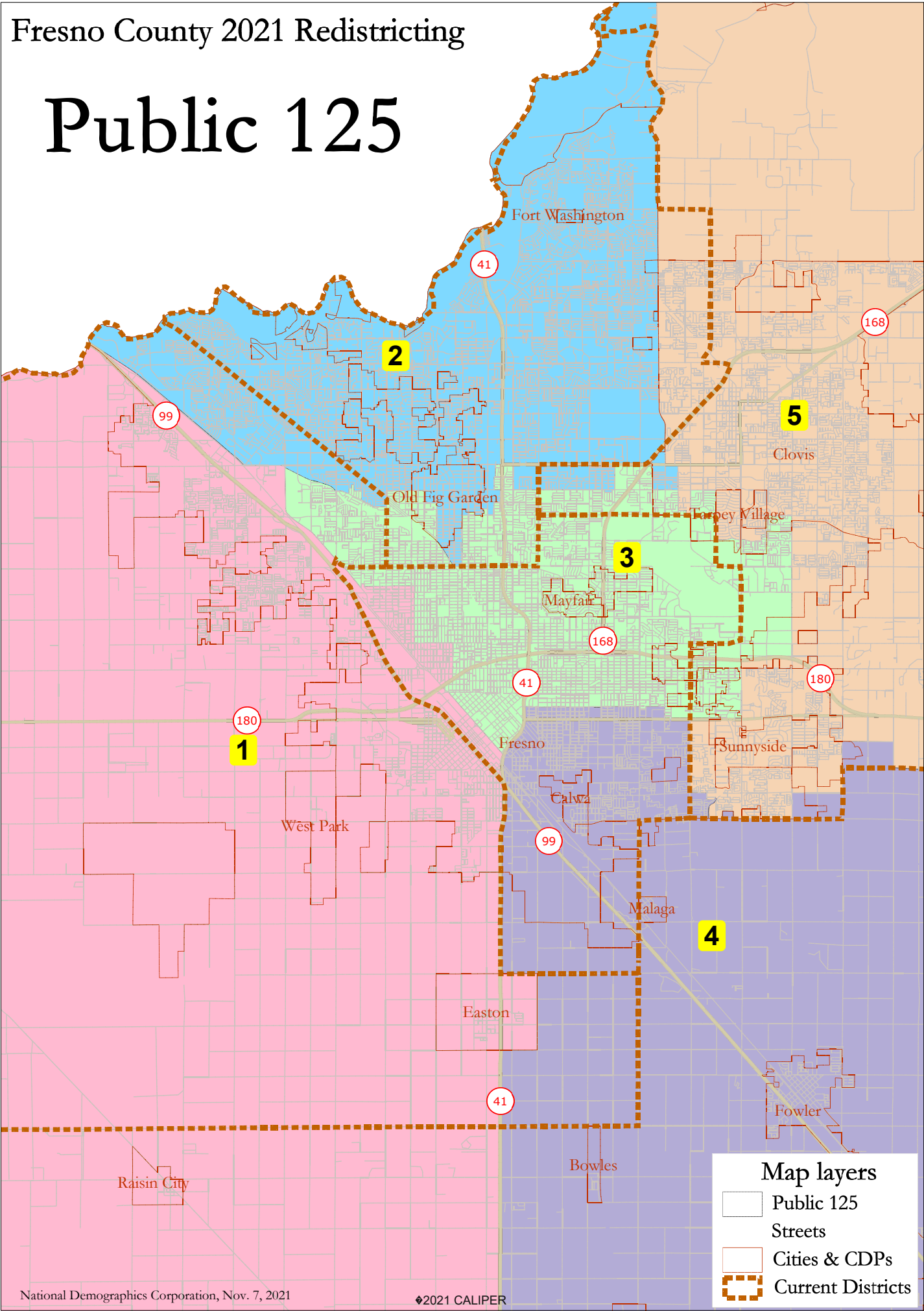


County F							
District		1	2	3	4	5	Total
	Total Pop	203,117	199,107	202,936	201,841	201,529	1,008,530
	Deviation from ideal	1,411	-2,599	1,230	135	-177	4,010
	% Deviation	0.70%	-1.29%	0.61%	0.07%	-0.09%	1.99%
Total Pop	% Hisp	62.5%	34%	65%	74%	32%	54%
	% NH White	16%	45%	14%	16%	44%	27%
	% NH Black	8%	6%	7%	1%	3%	5%
	% Asian-American	12%	12%	12%	6%	16%	12%
Citizen Voting Age Pop	Total	103,419	142,491	111,091	102,376	125,670	585,047
	% Hisp	51%	27%	54%	62%	27%	42%
	% NH White	26%	57%	24%	28%	56%	40%
	% NH Black	11%	5%	8%	1%	3%	6%
	% Asian/Pac.Isl.	10%	10%	12%	7%	13%	11%
Voter Registration (Nov 2020)	Total	88,959	122,649	85,123	87,300	119,949	503,980
	% Latino est.	51%	25%	55%	62%	25%	41%
	% Spanish-Surnamed	47%	24%	51%	58%	23%	38%
	% Asian-Surnamed	6%	5%	3%	4%	5%	5%
	% Filipino-Surnamed	1%	1%	1%	1%	1%	1%
	% NH White est.	30%	64%	32%	32%	66%	48%
	% NH Black	14%	4%	11%	2%	3%	6%
Voter Turnout (Nov 2020)	Total	59,142	98,178	50,967	62,058	95,866	366,211
	% Latino est.	48%	23%	53%	57%	23%	37%
	% Spanish-Surnamed	45%	22%	49%	53%	22%	35%
	% Asian-Surnamed	6%	5%	3%	5%	5%	5%
	% Filipino-Surnamed	1%	1%	1%	1%	1%	1%
	% NH White est.	32%	67%	34%	36%	68%	52%
	% NH Black	12%	4%	10%	1%	3%	5%
Voter Turnout (Nov 2018)	Total	37,463	71,692	32,169	41,744	64,561	247,629
	% Latino est.	44%	19%	49%	52%	20%	33%
	% Spanish-Surnamed	42%	18%	46%	50%	19%	31%
	% Asian-Surnamed	5%	4%	2%	4%	4%	4%
	% Filipino-Surnamed	1%	1%	1%	1%	1%	1%
	% NH White est.	36%	71%	37%	40%	72%	56%
	% NH Black est.	13%	4%	9%	1%	2%	5%
ACS Pop. Est.	Total	199,244	200,621	195,431	199,879	186,095	981,270
Age	age0-19	34%	27%	32%	34%	30%	31%
	age20-60	52%	51%	54%	51%	50%	52%
	age60plus	14%	22%	14%	16%	19%	17%
Immigration	immigrants	27%	14%	23%	28%	14%	21%
	naturalized	33%	58%	38%	31%	63%	41%
Language spoken at home	english	45%	74%	44%	41%	73%	55%
	spanish	44%	15%	45%	54%	15%	35%
	asian-lang	5%	6%	9%	2%	8%	6%
	other lang	6%	5%	2%	3%	4%	4%
Language Fluency	Speaks Eng. "Less than Very Well"	27%	8%	23%	26%	8%	19%
Education (among those age 25+)	hs-grad	47%	43%	47%	46%	49%	46%
	bachelor	9%	23%	8%	9%	19%	14%
	graduatedegree	3%	14%	3%	4%	10%	7%
Child in Household	child-under18	47%	31%	41%	47%	38%	40%
Pct of Pop. Age 16+	employed	62%	63%	58%	60%	63%	61%
Household Income	income 0-25k	26%	17%	38%	25%	15%	24%
	income 25-50k	26%	18%	27%	27%	19%	23%
	income 50-75k	19%	18%	16%	17%	16%	17%
	income 75-200k	26%	39%	18%	28%	42%	31%
	income 200k-plus	2%	9%	1%	3%	8%	5%
Housing Stats	single family	75%	71%	60%	83%	84%	74%
	multi-family	25%	29%	40%	17%	16%	26%
	rented	51%	43%	64%	44%	32%	47%
	owned	49%	57%	36%	56%	68%	53%
Total population data from the 2020 Decennial Census.							
Surname-based Voter Registration and Turnout data from the California Statewide Database.							
Latino voter registration and turnout data are Spanish-surname counts adjusted using Census Population Department undercount estimates. NH White and NH Black registration and turnout counts estimated by NDC. Citizen Voting Age Pop., Age, Immigration, and other demographics from the 2015-2019 American Community Survey and Special Tabulation 5-year data.							

Public 125



Public 125



Public 125							
District		1	2	3	4	5	Total
	Total Pop	201,779	201,748	201,753	201,449	201,801	1,008,530
	Deviation from ideal	73	42	47	-257	95	352
	% Deviation	0.04%	0.02%	0.02%	-0.13%	0.05%	0.17%
Total Pop	% Hisp	68.3%	34%	60%	76%	30%	54%
	% NH White	14%	43%	18%	13%	46%	27%
	% NH Black	6%	6%	7%	2%	3%	5%
	% Asian-American	9%	13%	12%	7%	17%	12%
Citizen Voting Age Pop	Total	97,875	142,992	116,487	102,668	125,025	585,047
	% Hisp	55%	27%	50%	64%	24%	42%
	% NH White	26%	55%	29%	23%	58%	40%
	% NH Black	9%	6%	9%	3%	3%	6%
	% Asian/Pac.Isl.	9%	11%	11%	8%	13%	11%
Voter Registration (Nov 2020)	Total	82,632	122,707	89,139	86,847	122,655	503,980
	% Latino est.	54%	26%	51%	65%	24%	41%
	% Spanish-Surnamed	50%	24%	46%	60%	22%	38%
	% Asian-Surnamed	5%	6%	3%	4%	6%	5%
	% Filipino-Surnamed	1%	1%	1%	1%	1%	1%
	% NH White est.	29%	63%	37%	28%	67%	48%
	% NH Black	12%	5%	10%	4%	3%	6%
Voter Turnout (Nov 2020)	Total	54,024	98,302	55,365	58,953	99,567	366,211
	% Latino est.	51%	24%	48%	61%	22%	37%
	% Spanish-Surnamed	48%	22%	45%	57%	21%	35%
	% Asian-Surnamed	6%	6%	3%	4%	5%	5%
	% Filipino-Surnamed	1%	1%	1%	1%	1%	1%
	% NH White est.	32%	65%	40%	32%	68%	52%
	% NH Black	10%	5%	9%	3%	3%	5%
Voter Turnout (Nov 2018)	Total	34,324	71,081	35,143	39,465	67,616	247,629
	% Latino est.	47%	20%	43%	56%	19%	33%
	% Spanish-Surnamed	44%	19%	41%	53%	18%	31%
	% Asian-Surnamed	5%	5%	2%	4%	4%	4%
	% Filipino-Surnamed	1%	1%	1%	1%	1%	1%
	% NH White est.	35%	69%	44%	36%	73%	56%
	% NH Black est.	10%	4%	8%	3%	3%	5%
ACS Pop. Est.	Total	199,925	198,696	195,169	202,058	185,423	981,270
Age	age0-19	35%	26%	32%	34%	30%	31%
	age20-60	52%	53%	53%	50%	50%	52%
	age60plus	14%	21%	15%	15%	19%	17%
Immigration	immigrants	29%	15%	20%	28%	14%	21%
	naturalized	29%	59%	41%	32%	64%	41%
Language spoken at home	english	40%	73%	52%	38%	74%	55%
	spanish	51%	13%	38%	56%	13%	35%
	asian-lang	4%	7%	8%	3%	8%	6%
	other lang	5%	7%	2%	3%	4%	4%
Language Fluency	Speaks Eng. "Less than Very Well"	30%	9%	18%	28%	8%	19%
Education (among those age 25+)	hs-grad	45%	43%	50%	45%	47%	46%
	bachelor	8%	23%	9%	8%	21%	14%
	graduatedegree	2%	14%	4%	3%	11%	7%
Child in Household	child-under18	49%	30%	40%	47%	39%	40%
Pct of Pop. Age 16+	employed	60%	65%	58%	60%	64%	61%
Household Income	income 0-25k	28%	15%	36%	29%	13%	24%
	income 25-50k	26%	20%	26%	27%	17%	23%
	income 50-75k	18%	19%	17%	16%	15%	17%
	income 75-200k	25%	38%	20%	25%	46%	31%
	income 200k-plus	2%	8%	1%	2%	9%	5%
Housing Stats	single family	79%	70%	60%	77%	86%	74%
	multi-family	21%	30%	40%	23%	14%	26%
	rented	52%	43%	62%	49%	28%	47%
	owned	48%	57%	38%	51%	72%	53%

Total population data from the 2020 Decennial Census.

Surname-based Voter Registration and Turnout data from the California Statewide Database.

Latino voter registration and turnout data are Spanish-surname counts adjusted using Census Population Department undercount estimates. NH White and NH Black registration and turnout counts estimated by NDC. Citizen Voting Age Pop., Age, Immigration, and other demographics from the 2015-2019 American Community Survey and Special Tabulation 5-year data.