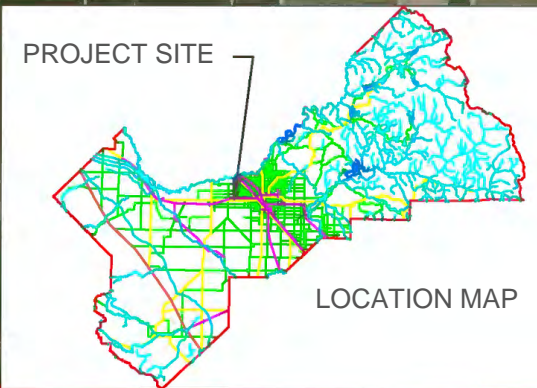




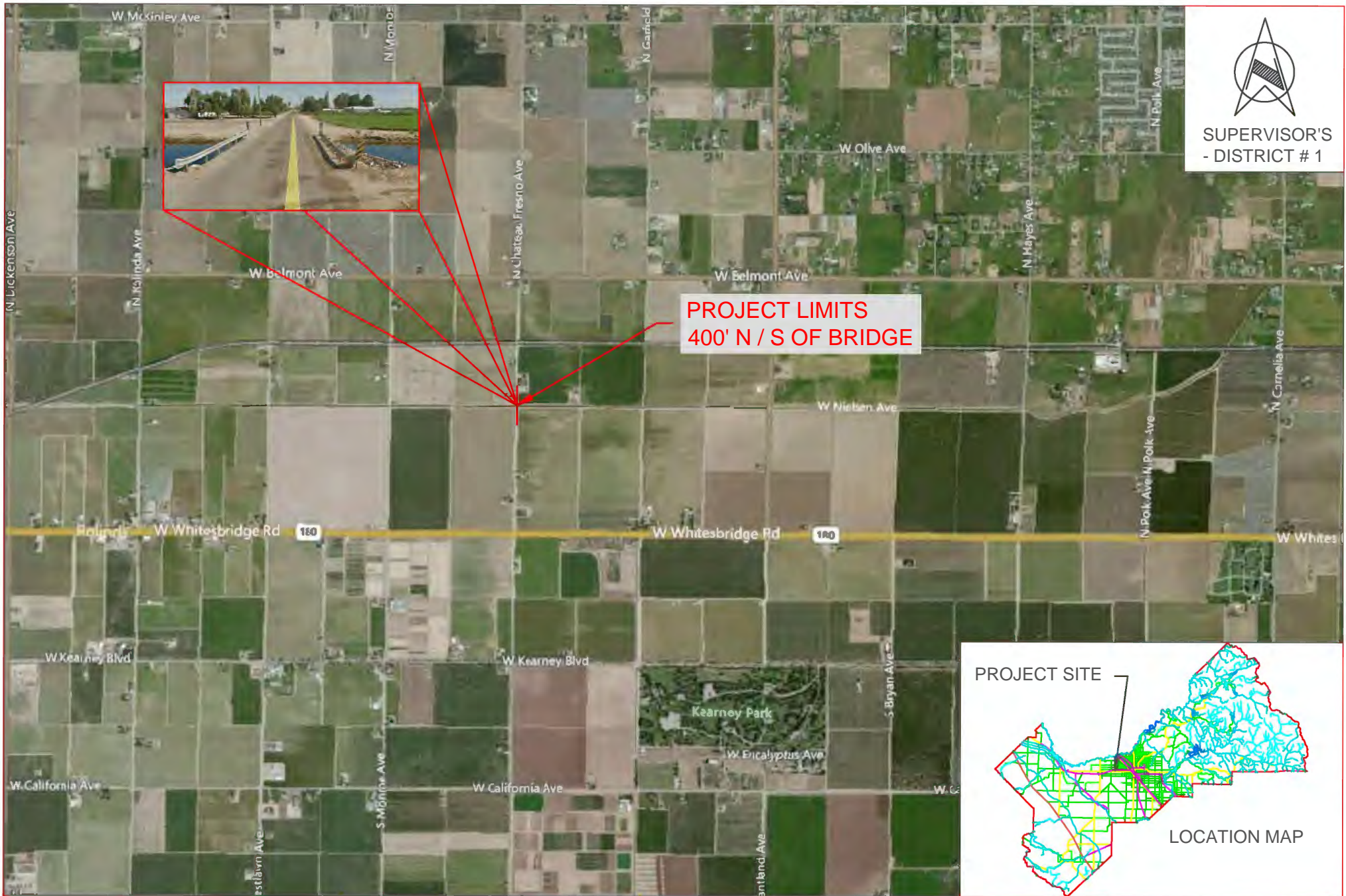
SUPERVISOR'S
- DISTRICT # 1



PROJECT LIMITS
400' N / S OF BRIDGE



LOCATION MAP



	DATE:	SCALE
DESIGNED: MYS	01/14	
DRAWN: JM	01/14	
BRIDGE NO. 42C0486 / 04-030		

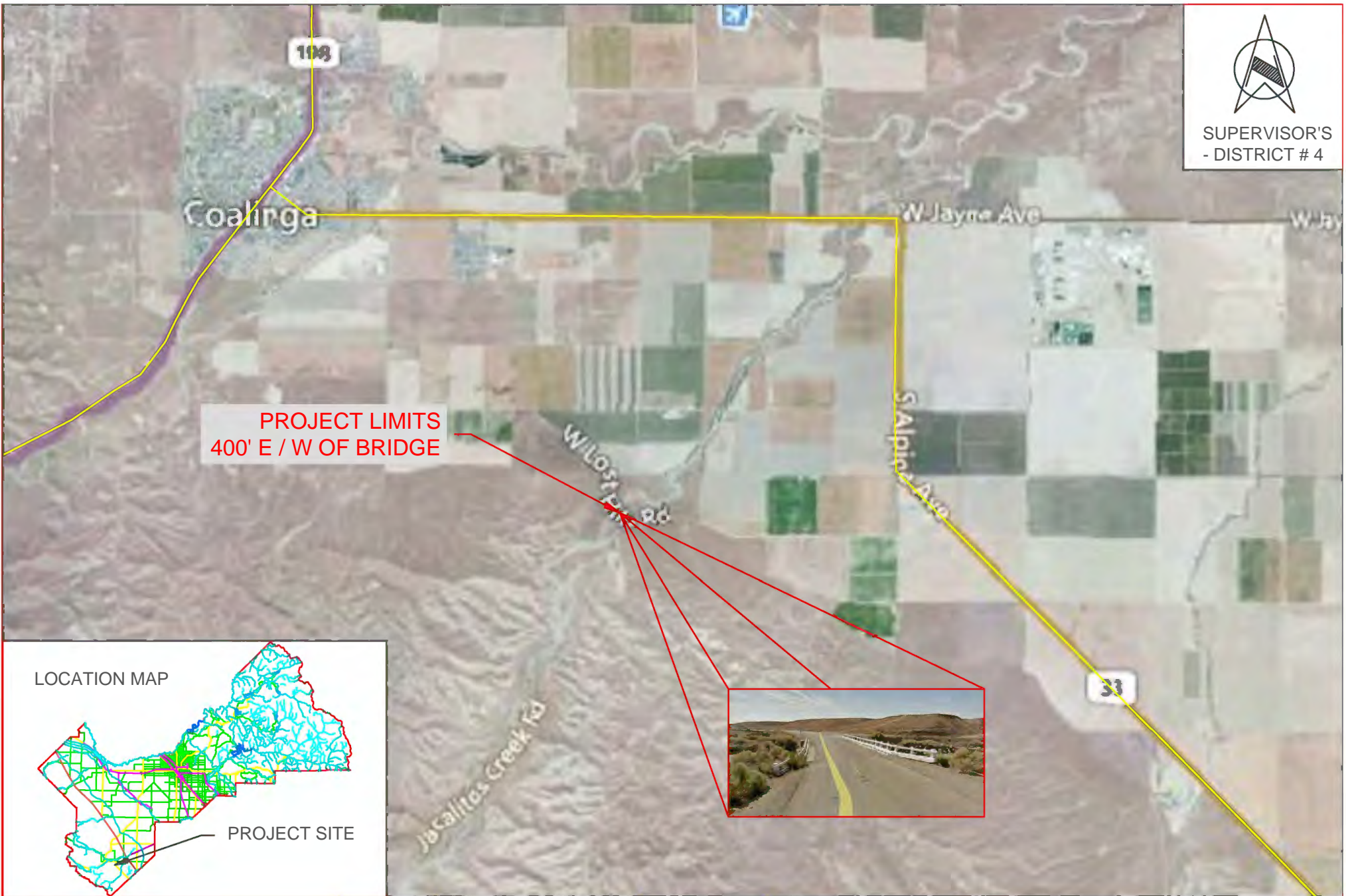


DEPARTMENT OF PUBLIC WORKS AND PLANNING

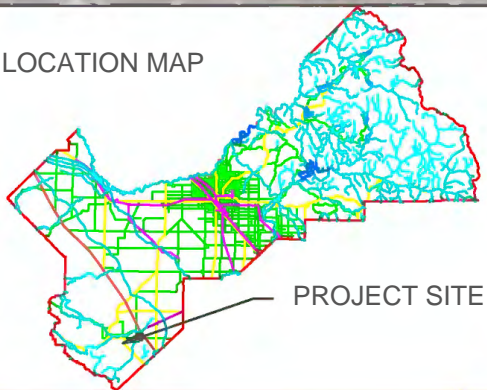
**HOUGHTON CANAL BRIDGE REPLACEMENT
ON N. CHATEAU FRESNO AVE**



SUPERVISOR'S
- DISTRICT # 4



LOCATION MAP



DESIGNED: MYS

DRAWN: JM

BRIDGE NO. 42C0078 / 03-038

DATE:

01/14

01/14

SCALE

0 1/2 mi 1 mi



DEPARTMENT OF PUBLIC WORKS AND PLANNING

**JACALITOS CREEK BRIDGE REPLACEMENT
ON W. LOST HILLS RD**

LOCATION DETAIL

ATTACHMENT A



DINKEY CREEK ROAD



PROJECT LOCATION



Source: Esri, DigitalGlobe, GeoEye, Earthstar Geographics, CNES/Airbus DS, USDA, USGS, AeroGRID, IGN, and the GIS User Community

STREETS

TOLLHOUSE RD

BRETZ RD

SHAVER LAKE

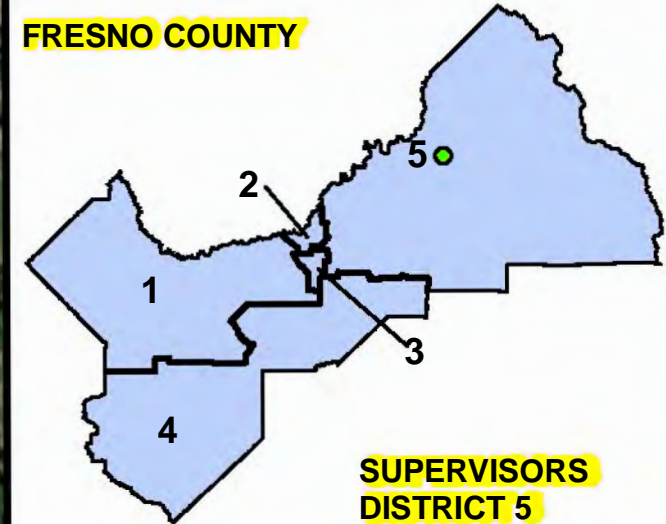
DINKEY CREEK RD

168



Source: Esri, DigitalGlobe, GeoEye, Earthstar Geographics, CNES/Airbus DS, USDA, USGS, AeroGRID, IGN, and the GIS User Community

FRESNO COUNTY



SUPERVISORS DISTRICT 5

DATE:

SCALE IN FEET

DESIGNED: C.M.

09/10/2020

DRAWN: C.M.

09/10/2020

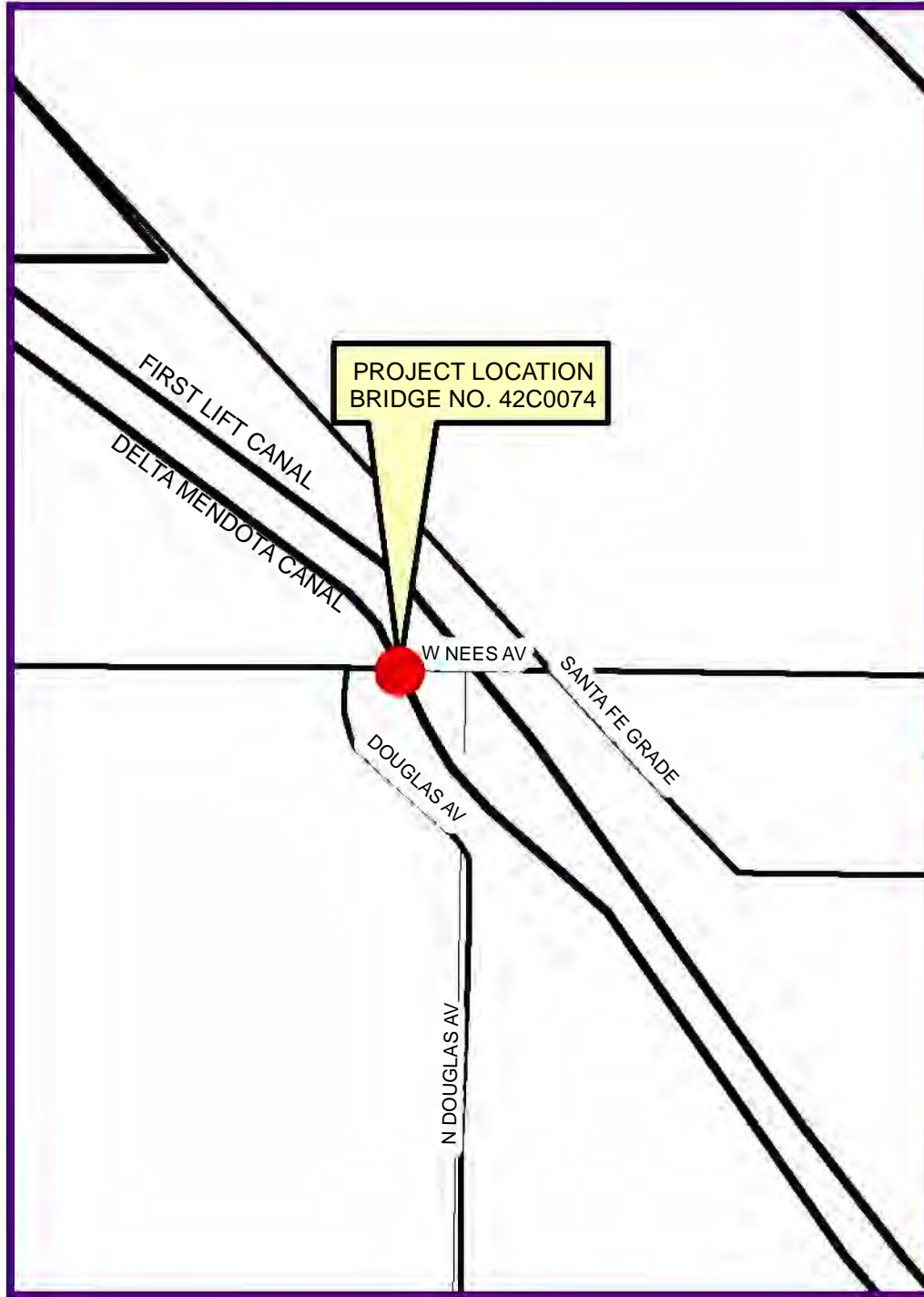
STATE BRIDGE NO. N/A



DEPARTMENT OF PUBLIC WORKS & PLANNING

DINKEY CREEK CULVERT REPLACEMENT OVER MARKWOOD CREEK

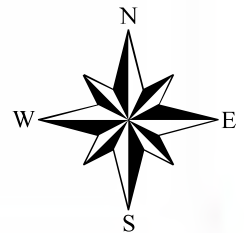
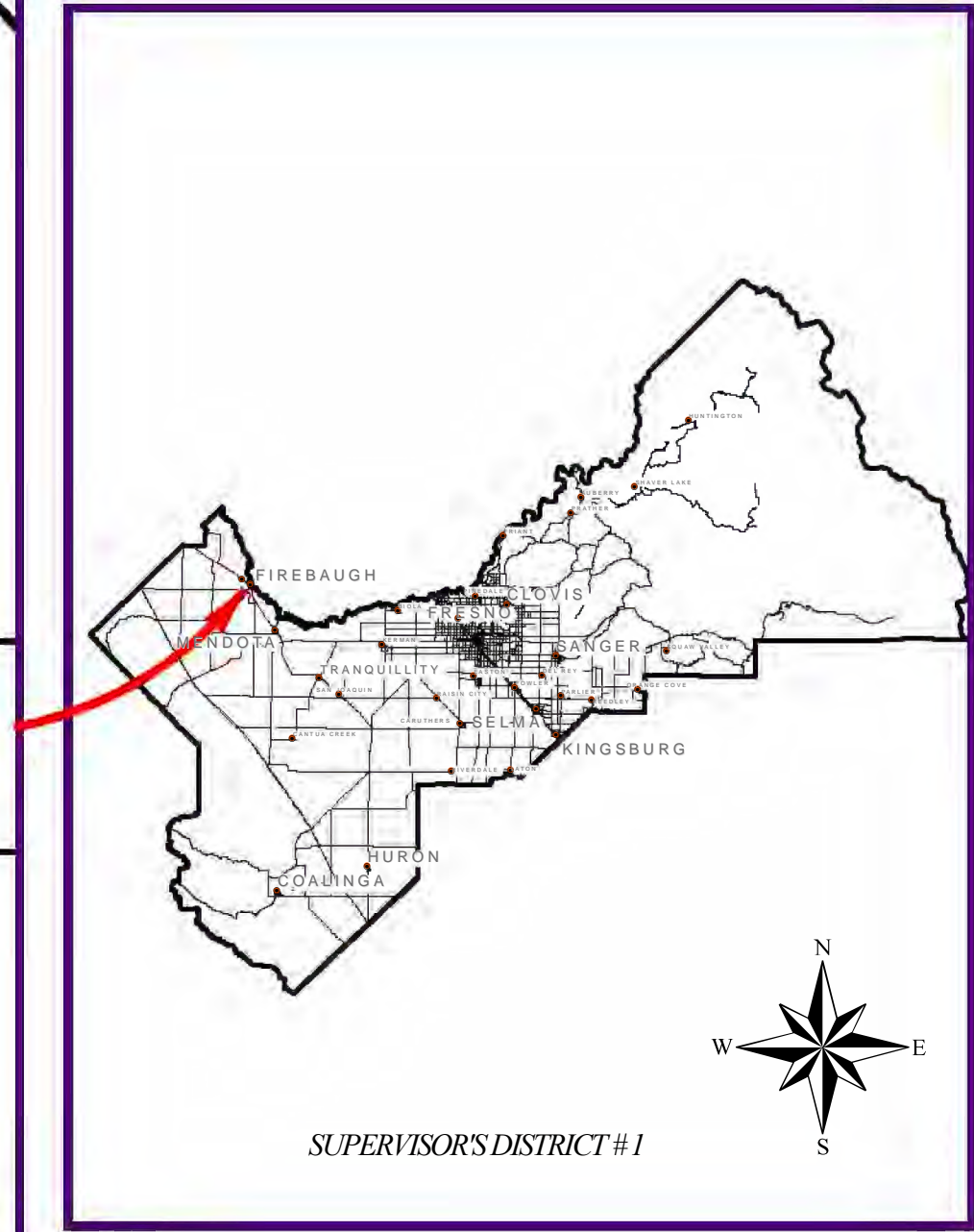
PROJECT LOCATION MAP



SCALE: 0 0.125 0.25 Miles

LOCATION MAP

BRIDGE No. 42C0074 NEES AVE. & DELTA MENDOTA CANAL
BRIDGE REPLACEMENT

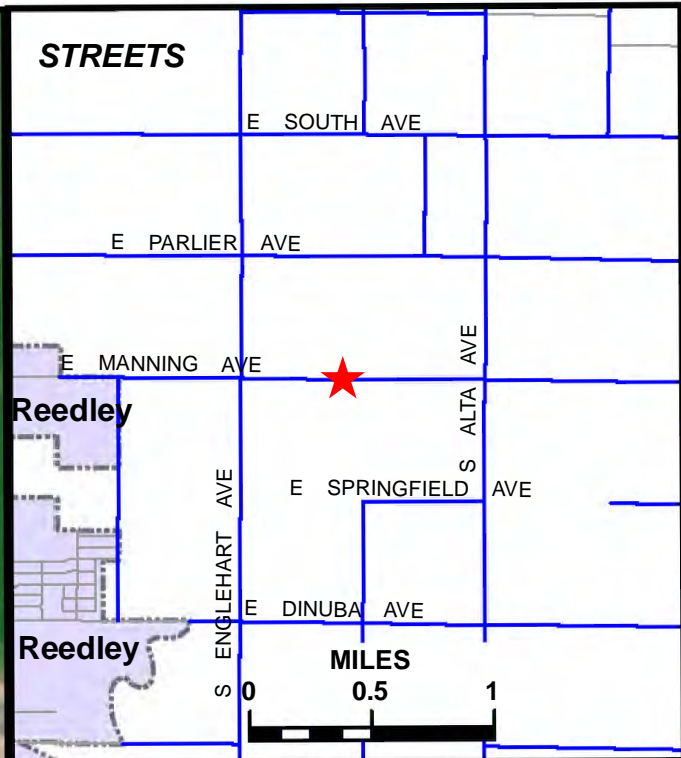


DEPARTMENT OF PUBLIC WORKS AND PLANNING

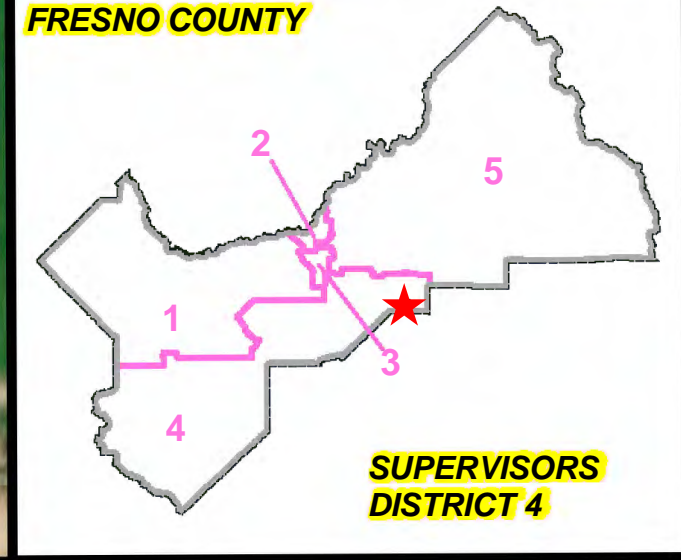
LOCATION DETAIL



Source: Esri, DigitalGlobe, GeoEye, Earthstar Geographics, CNES/Airbus DS, USDA, USGS, AeroGRID, IGN, and the GIS User Community



FRESNO COUNTY



		DATE:	SCALE IN FEET		<i>DEPARTMENT OF PUBLIC WORKS & PLANNING</i> HIGHWAY BRIDGE PROGRAM MANNING AVENUE BRIDGE REPLACEMENT OVER TRAVERS CREEK BRLO-5942(198)		
DESIGNED:	D.N.	06/25/21	<div>FEET</div> <div>050100</div> 				
DRAWN:	D.N.	06/25/21					
STATE BRIDGE NO.		42C0175					



LIBERTY MILLRACE CANAL

PROPOSED ALIGNMENT

PROPOSED BRIDGE LOCATION

EXISTING BRIDGE

W. ELKHORN AVENUE

STREET MAP



LIBERTY MILLRACE CANAL

BRIDGE

W. ELKHORN AVE

S. CORNELIA AVE

S. CORNELIA AVE

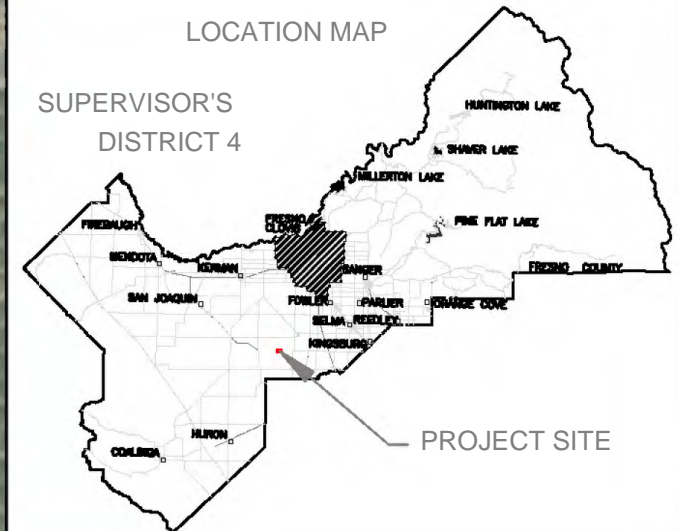
W. DAVIS AVE

0 1/2 1 mi
0 2640 5280 ft

S. POLK AVE

LOCATION MAP

SUPERVISOR'S
DISTRICT 4



PROJECT SITE

DATE:

SCALE IN FEET

DESIGNED: J.D.

12/17

0 100 200

DRAWN: J.D.

12/17

COUNTY BRIDGE NO. 05 - 132



DEPARTMENT OF PUBLIC WORKS AND PLANNING

BRIDGE REPLACEMENT PROJECT
LIBERTY MILLRACE CANAL BRIDGE
ON W. ELKHORN AVE 1.0mi W/O CORNELIA AVE



SUPERVISOR'S
- DISTRICT 5



PROJECT LIMITS 400'
N/S OF BRIDGE SITE

PROJECT SITE

LOCATION MAP

DESIGNED:	M.Y.S.
DRAWN:	J.M.
BRIDGE NO. 42C0496 / 08-039	

DATE:

12/14

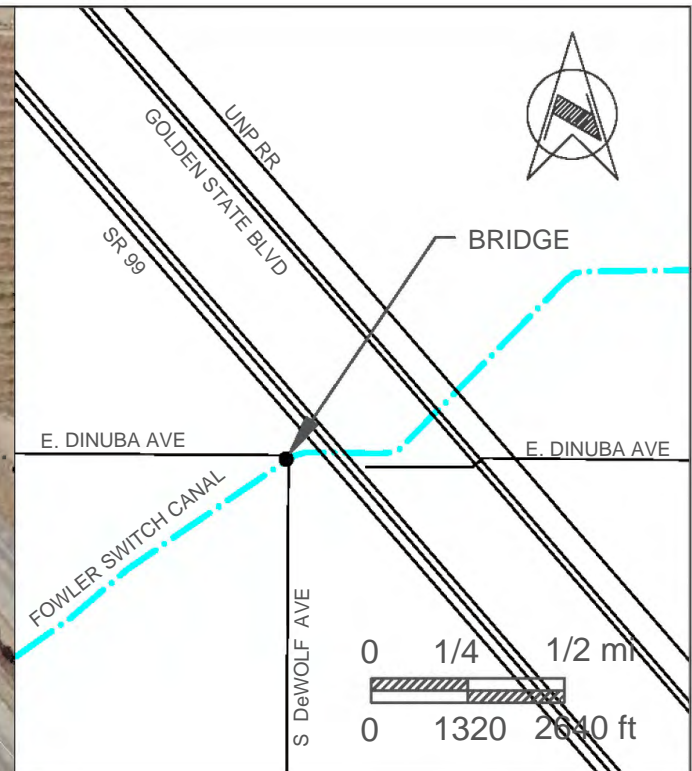
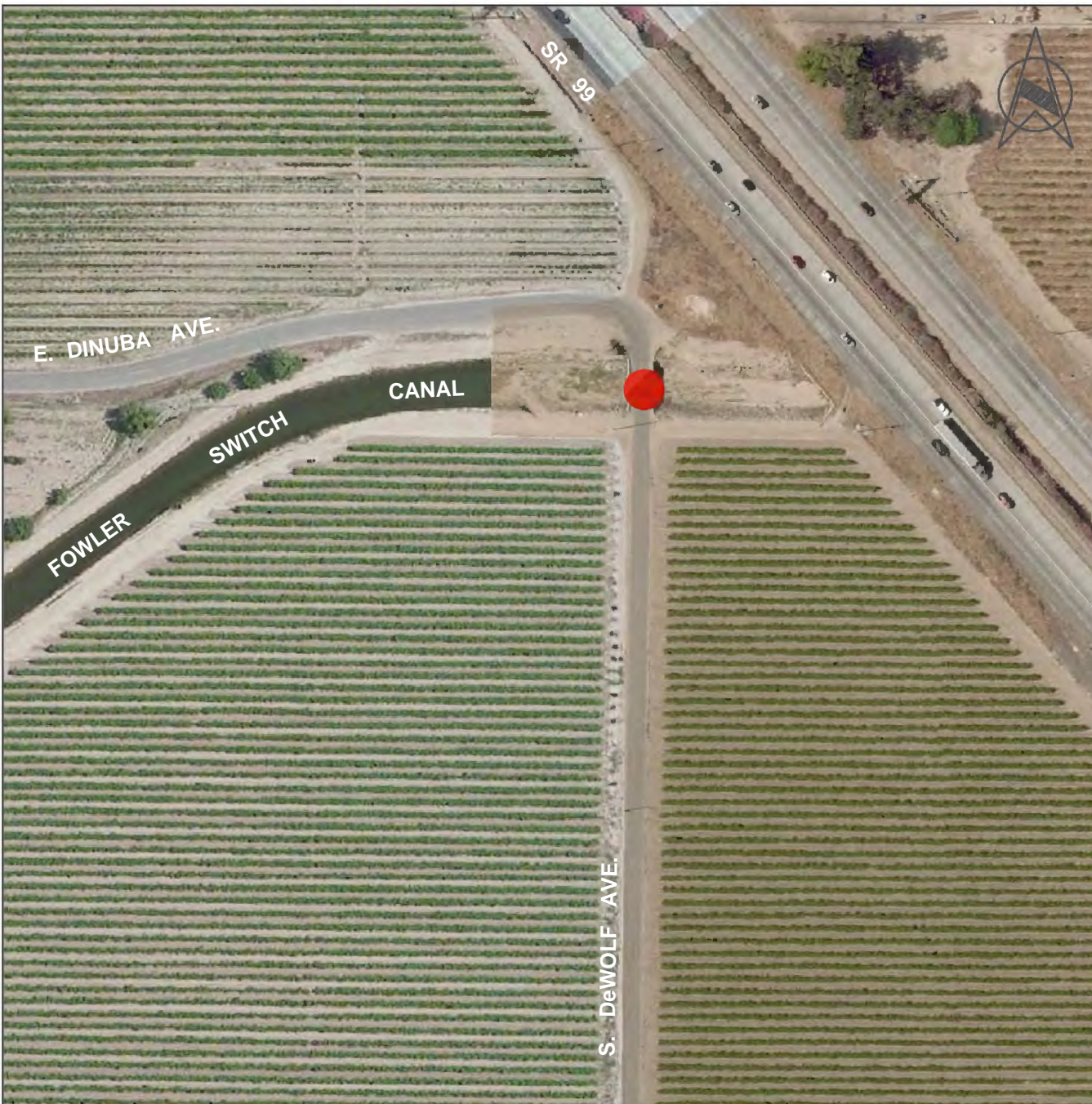
SCALE

0 $\frac{1}{4}$ mi $\frac{1}{2}$ mi

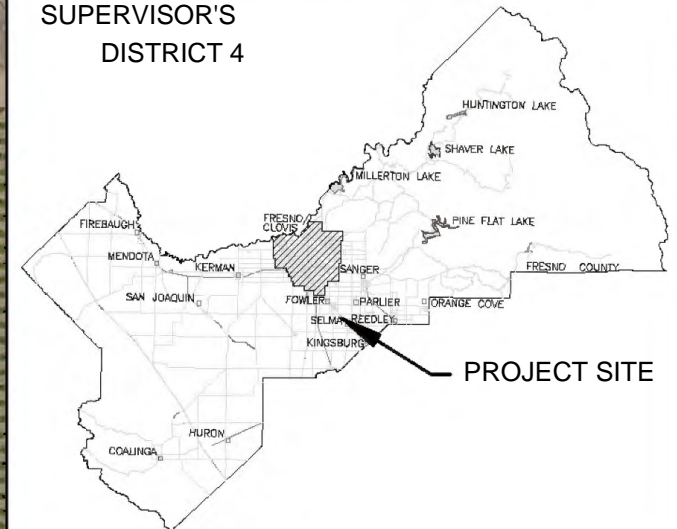


DEPARTMENT OF PUBLIC WORKS AND PLANNING

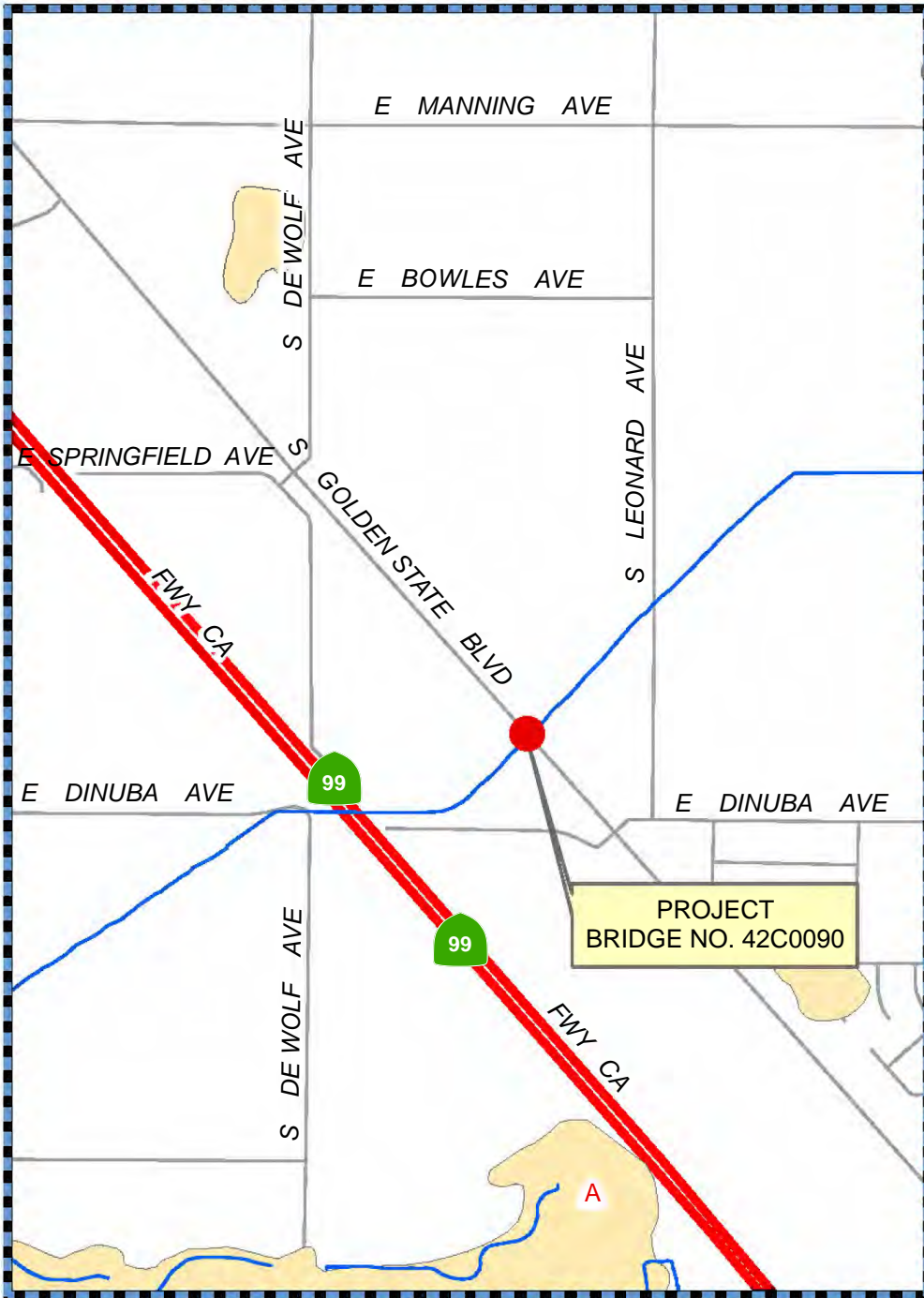
FRESNO CANAL BRIDGE REPLACEMENT
ON N. DEL REY AVE



SUPERVISOR'S DISTRICT 4



	DATE:	SCALE IN FEET		DEPARTMENT OF PUBLIC WORKS AND PLANNING
DESIGNED: J.G.	07/16	0 75 150 		BRIDGE REPLACEMENT PROJECT FOWLER SWITCH CANAL BRIDGE ON S. DE WOLF AVENUE
DRAWN: S.G.	07/16			
BRIDGE NO. 42C0039 / 09 - 005				



LOCATION MAP

FOWLER SWITCH CANAL BRIDGE REPLACEMENT
ON S. GOLDEN STATE BOULEVARD
BRDGE NO. 42C0090



DISTRICT # 4

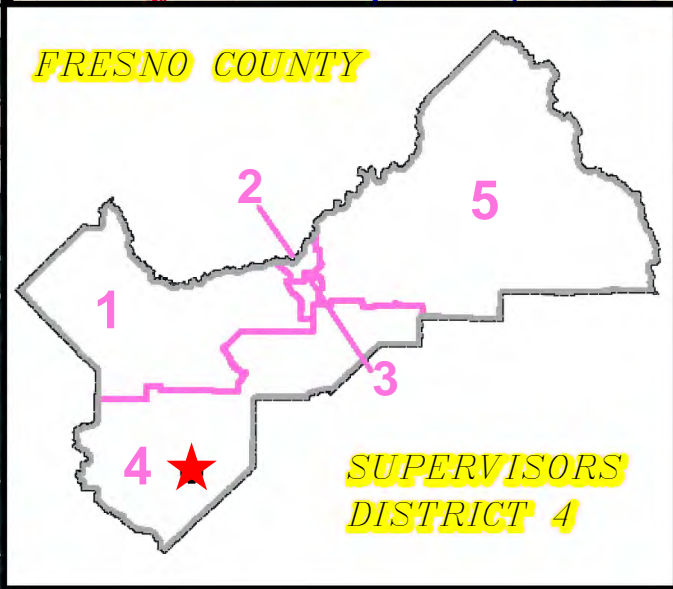
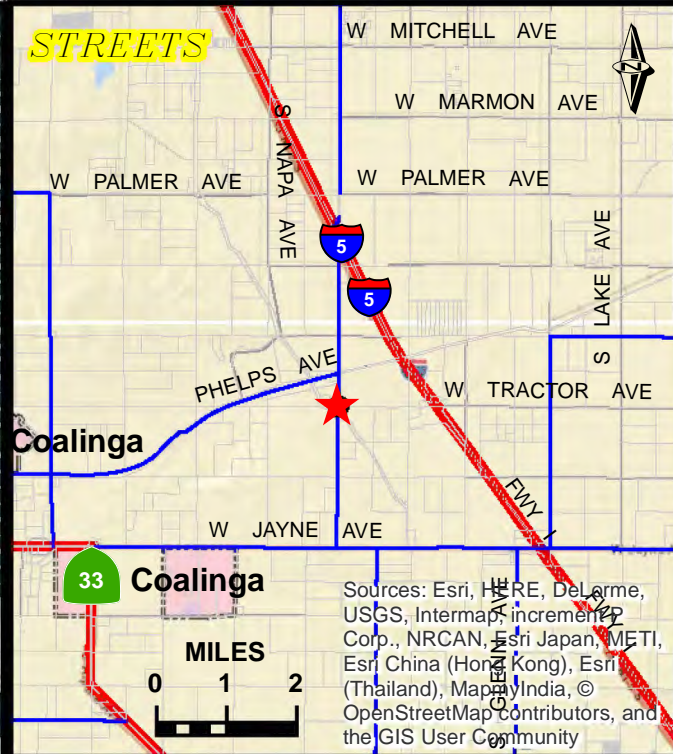


DEPARTMENT OF PUBLIC WORKS AND PLANNING

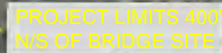
LOCATION DETAIL



Source: Esri, DigitalGlobe, GeoEye, Earthstar Geographics, CNES/Airbus DS, USDA, USGS, AEX, Getmapping, Aerogrid, IGN, IGP, swisstopo, and the GIS User Community

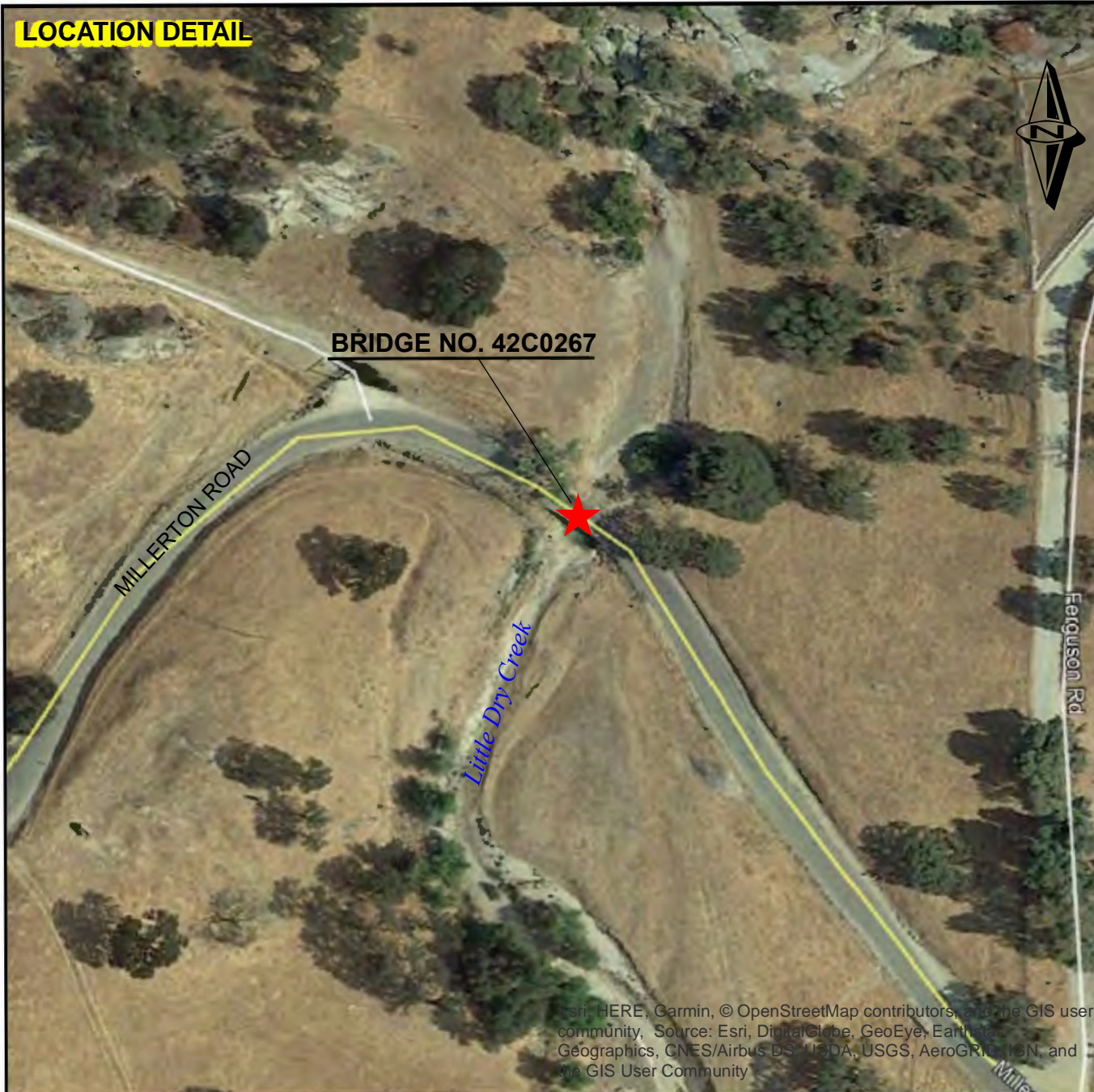


	DATE:	SCALE IN FEET		<i>DEPARTMENT OF PUBLIC WORKS & PLANNING</i>	
DESIGNED: D.N.	04/18/16	<div>Feet</div> <div>0100200</div> 		<div>HBP - BRIDGE REPLACEMENT</div> <div>EL DORADO AVE OVER ARROYO PASAJERO</div> <div>BRLO-5942(271)</div>	
DRAWN: D.N.	04/18/16				
STATE BRIDGE NO. 42C0097					



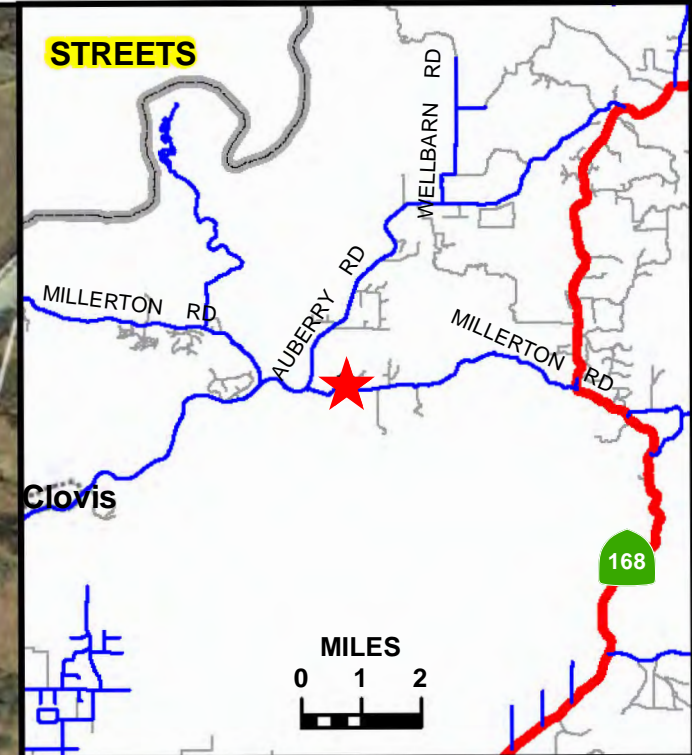
BALD MILL CREEK BRIDGE REPLACEMENT ON JOSE BASIN RD

LOCATION DETAIL

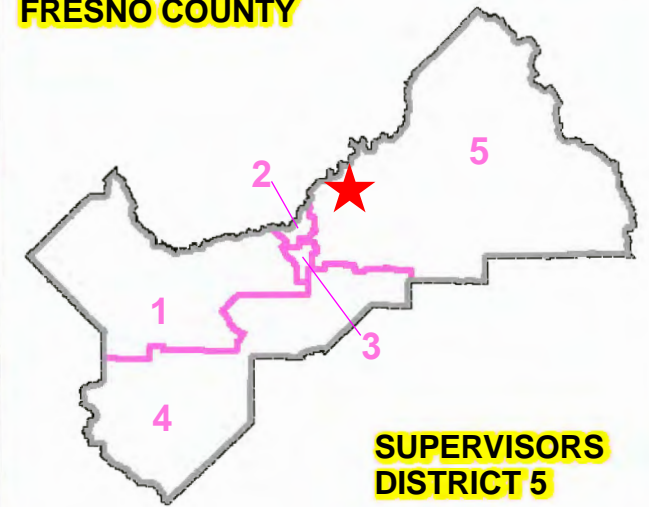


Esri, HERE, Garmin, © OpenStreetMap contributors, and the GIS user community, Source: Esri, DigitalGlobe, GeoEye, Earthstar Geographics, CNES/Airbus DS, USDA, USGS, AeroGRID, IGN, and the GIS User Community

STREETS



FRESNO COUNTY



**SUPERVISORS
DISTRICT 5**

DATE:

SCALE IN FEET

DESIGNED: D.N.

10/28/19

DRAWN: D.N.

10/28/19

STATE BRIDGE NO. 42C0267



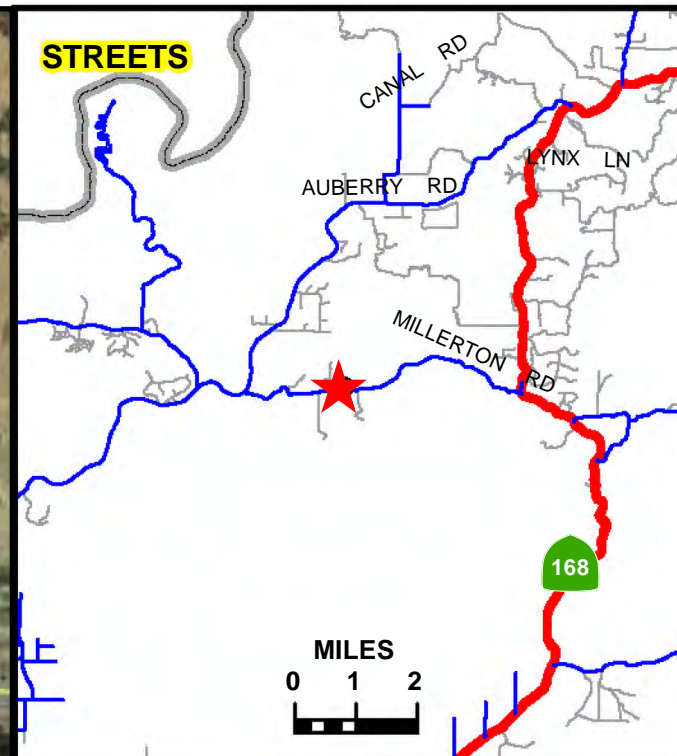
DEPARTMENT OF PUBLIC WORKS & PLANNING

**HIGHWAY BRIDGE PROGRAM
LITTLE DRY CREEK BRIDGE ON MILLERTON ROAD
BRLO-5942(210) - 42C0267**

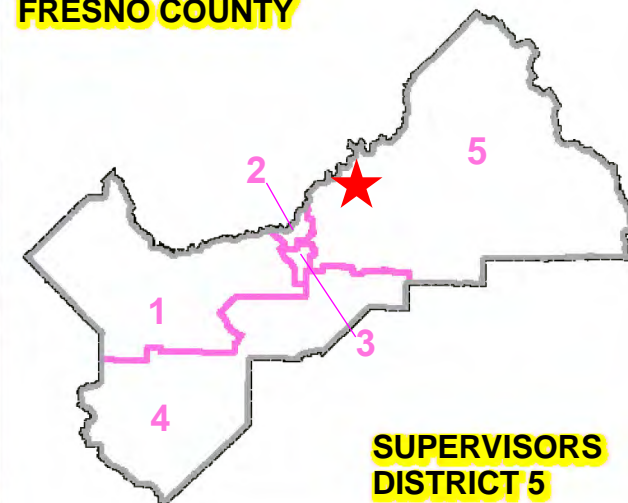
LOCATION DETAIL



STREETS



FRESNO COUNTY



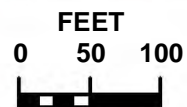
DATE:

SCALE IN FEET

DESIGNED: D.N. 10/28/19

DRAWN: D.N. 10/28/19

STATE BRIDGE NO. 42C0268



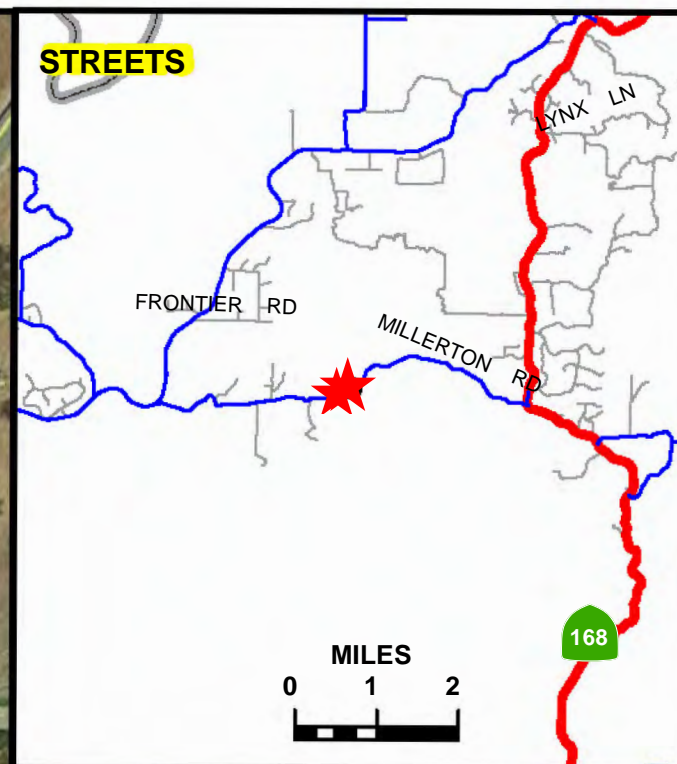
DEPARTMENT OF PUBLIC WORKS & PLANNING

HIGHWAY BRIDGE PROGRAM
LITTLE DRY CREEK BRIDGE ON MILLERTON ROAD
BRLO-5942(210) - 42C0268

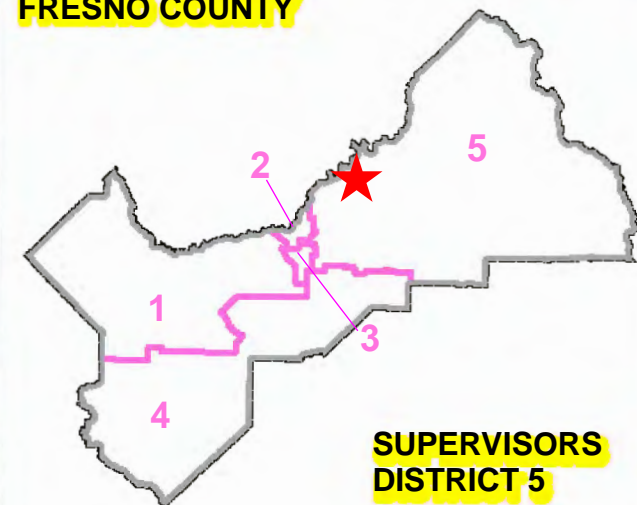
LOCATION DETAIL



STREETS



FRESNO COUNTY



**SUPERVISORS
DISTRICT 5**

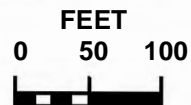
DATE:

SCALE IN FEET

DESIGNED: D.N. 10/28/19

DRAWN: D.N. 10/28/19

STATE BRIDGE NO. 42C0269



DEPARTMENT OF PUBLIC WORKS & PLANNING

**HIGHWAY BRIDGE PROGRAM
LITTLE DRY CREEK BRIDGE ON MILLERTON ROAD
BRLO-5942(210) - 42C0269**

LOCATION DETAIL

BRIDGE NO. 42C0270

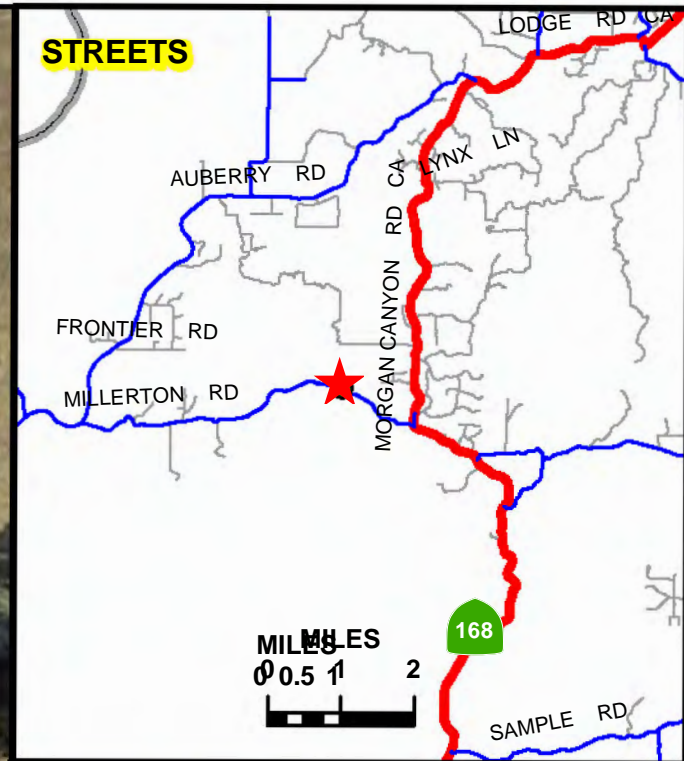
Little Dry Creek

MILLERTON ROAD

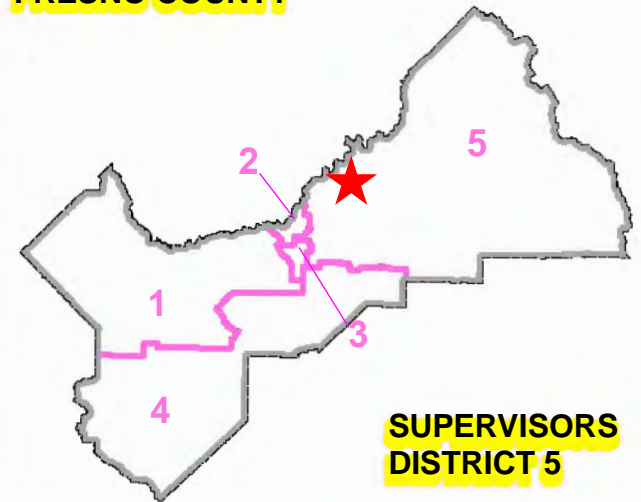


Esri, HERE, Garmin, © OpenStreetMap contributors, and the GIS user community, Source: Esri, DigitalGlobe, GeoEye, Earthstar Geographics, CNES/Airbus DS, USDA, USGS, AeroGRID, IGN, and the GIS User Community

STREETS



FRESNO COUNTY



**SUPERVISORS
DISTRICT 5**

DATE:

SCALE IN FEET

DESIGNED: D.N.

10/28/19

DRAWN: D.N.

10/28/19

STATE BRIDGE NO. 42C0270

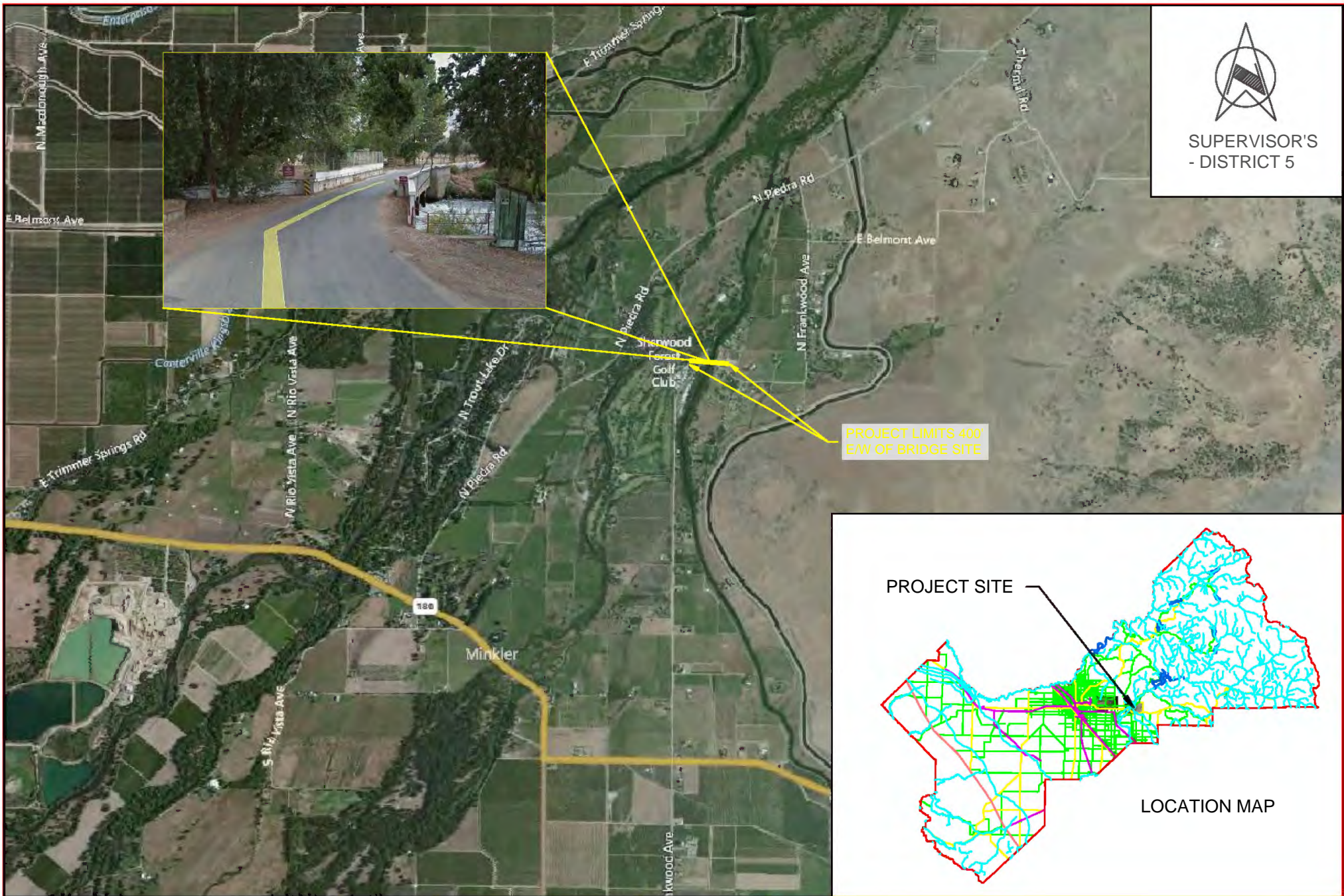


DEPARTMENT OF PUBLIC WORKS & PLANNING

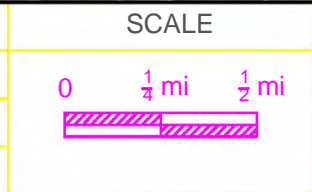
**HIGHWAY BRIDGE PROGRAM
LITTLE DRY CREEK BRIDGE ON MILLERTON ROAD
BRLO-5942(287) - 42C0270**



SUPERVISOR'S
- DISTRICT 5

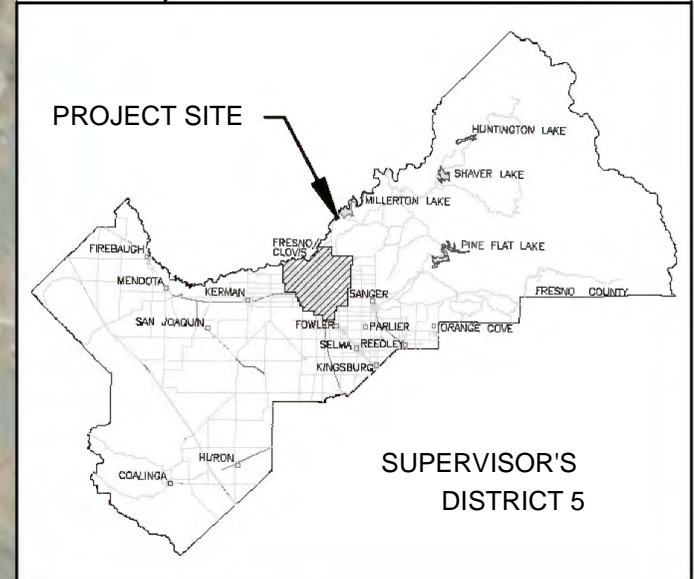
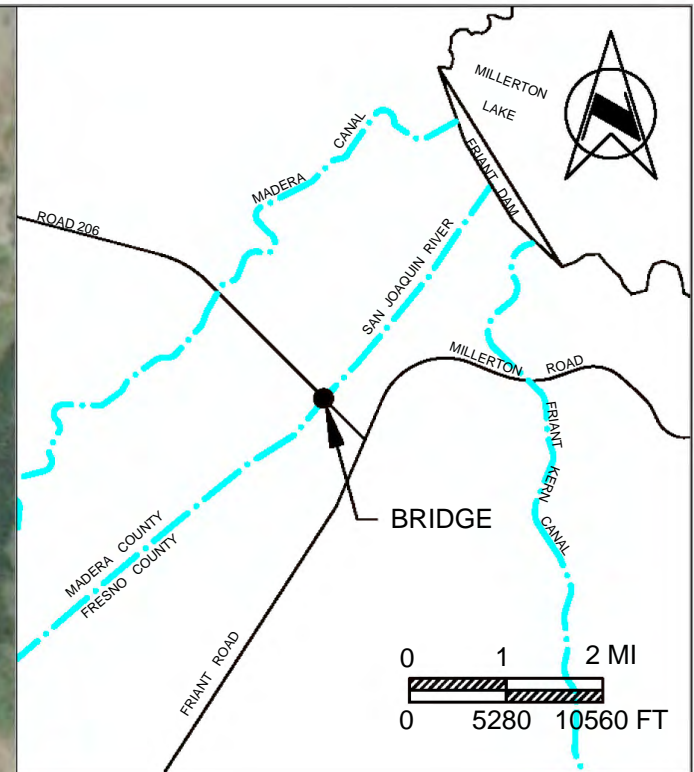


DESIGNED:	M.Y.S.	DATE:	12/14
DRAWN:	J.M.	DATE:	12/14
BRIDGE NO. 42C0289 / 09-048			



DEPARTMENT OF PUBLIC WORKS AND PLANNING

ALTA MAIN CANAL BRIDGE REPLACEMENT ON N. FRANKWOOD AVE



	DATE:	SCALE IN FEET		DEPARTMENT OF PUBLIC WORKS AND PLANNING	
DESIGNED: S.G.	10/17			HBP - SAN JOAQUIN RIVER BRIDGE ON NORTH FORK RD 0.1 mi NW/O FRIANT RD	
DRAWN: S.G.	10/17				
BRIDGE NO. 42C0001					