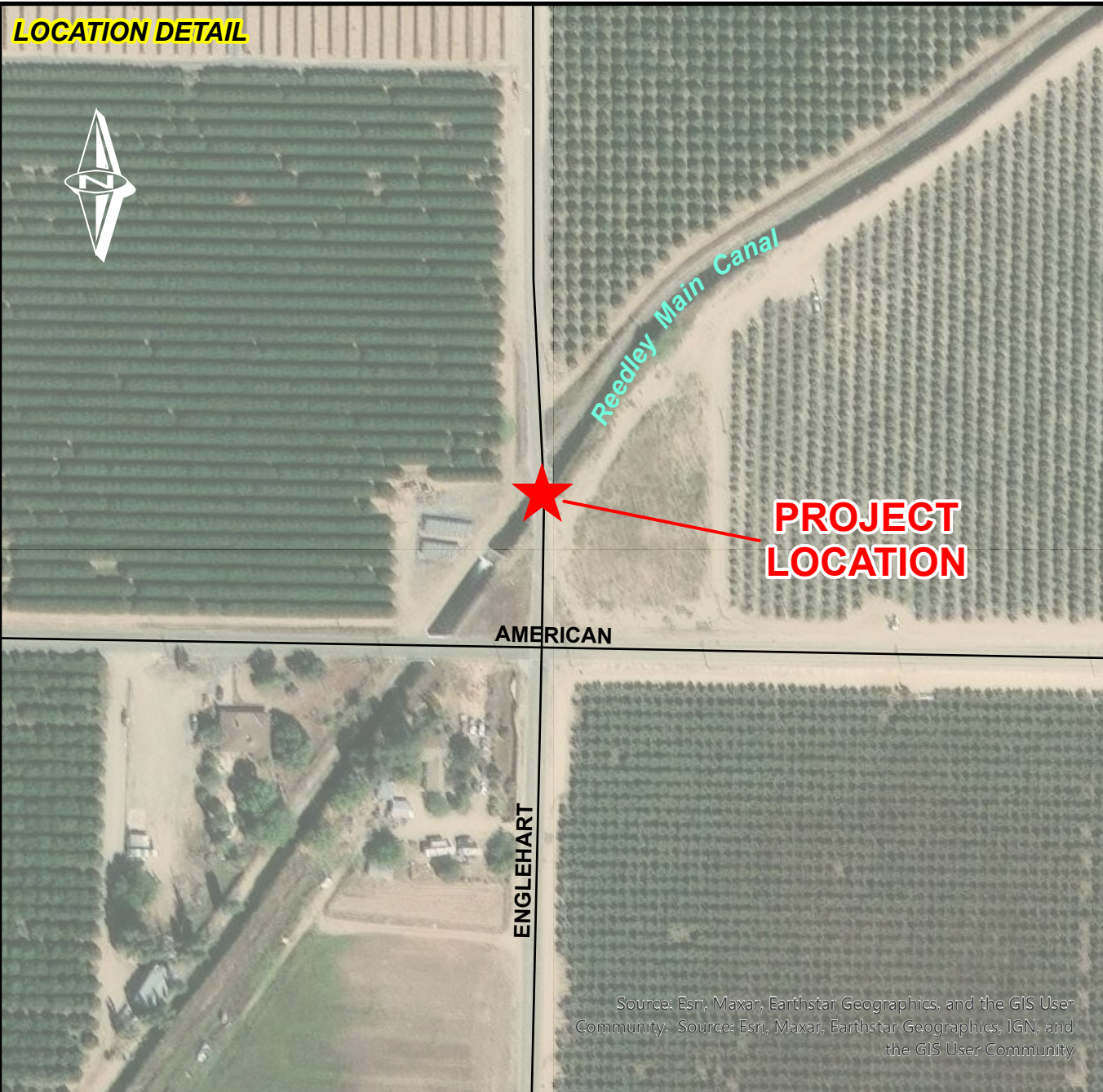


**LOCATION DETAIL**

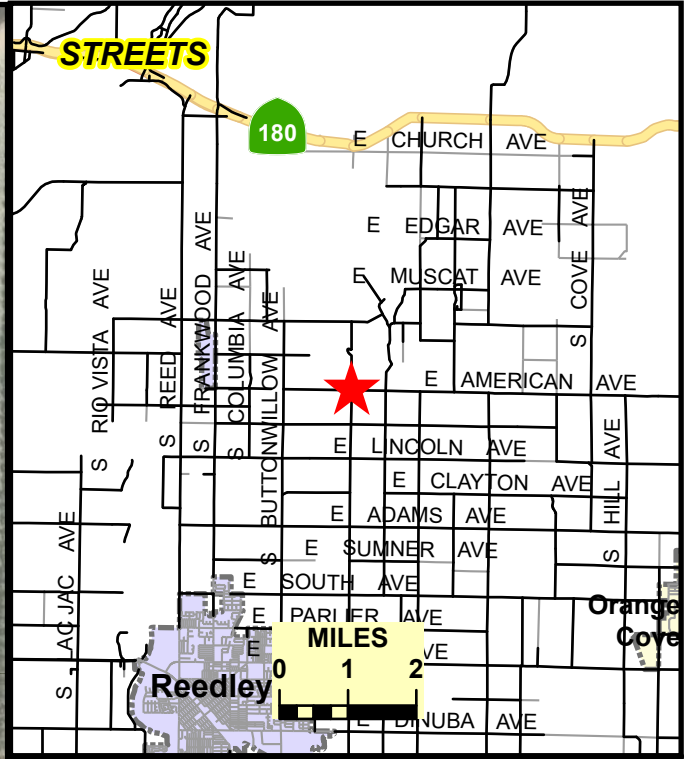


AMERICAN

ENGLEHART

**PROJECT  
LOCATION**

Source: Esri, Maxar, Earthstar Geographics, and the GIS User Community, Source: Esri, Maxar, Earthstar Geographics, IGN, and the GIS User Community



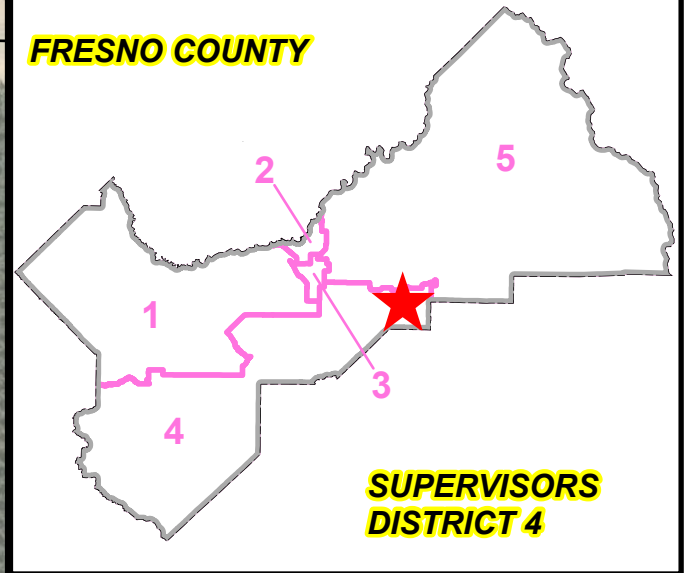
**STREETS**

180

MILES  
0 1 2

Reedley

**FRESNO COUNTY**



**SUPERVISORS  
DISTRICT 4**

DATE:

SCALE IN FEET

DESIGNED: D.N.

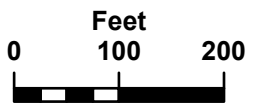
05/08/2024

DRAWN: D.N.

05/08/2024

STATE BRIDGE NO.

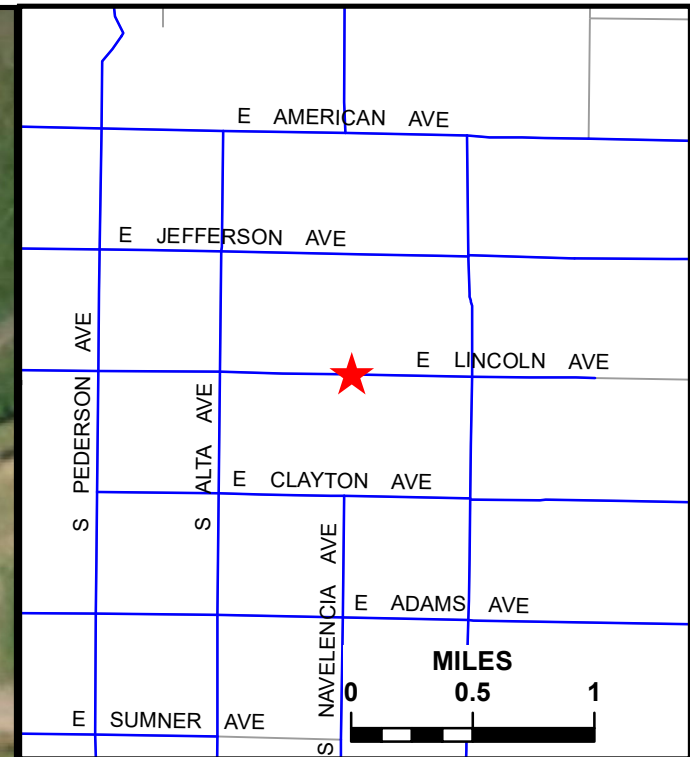
42C0276



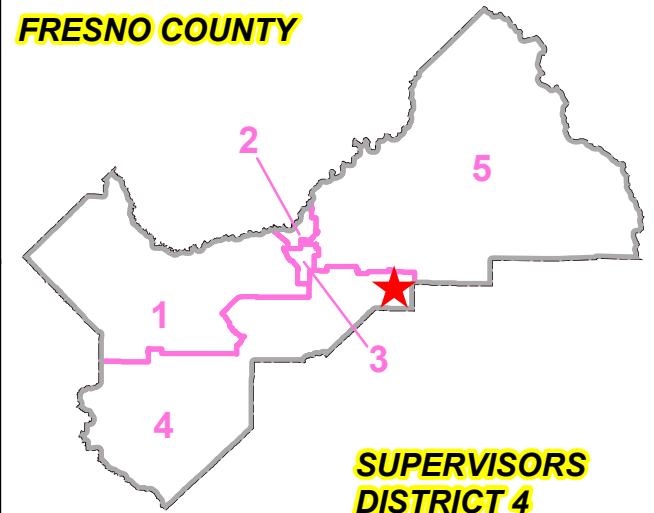
DEPARTMENT OF PUBLIC WORKS & PLANNING

**REEDLEY MAIN CANAL BRIDGE REPLACEMENT  
ON ENGLEHART AVENUE**

**LOCATION DETAIL**



**FRESNO COUNTY**



**SUPERVISORS DISTRICT 4**

Source: Esri, DigitalGlobe, GeoEye, Earthstar Geographics, CNES/Airbus DS, USDA, USGS, AeroGRID, IGN, and the GIS User Community

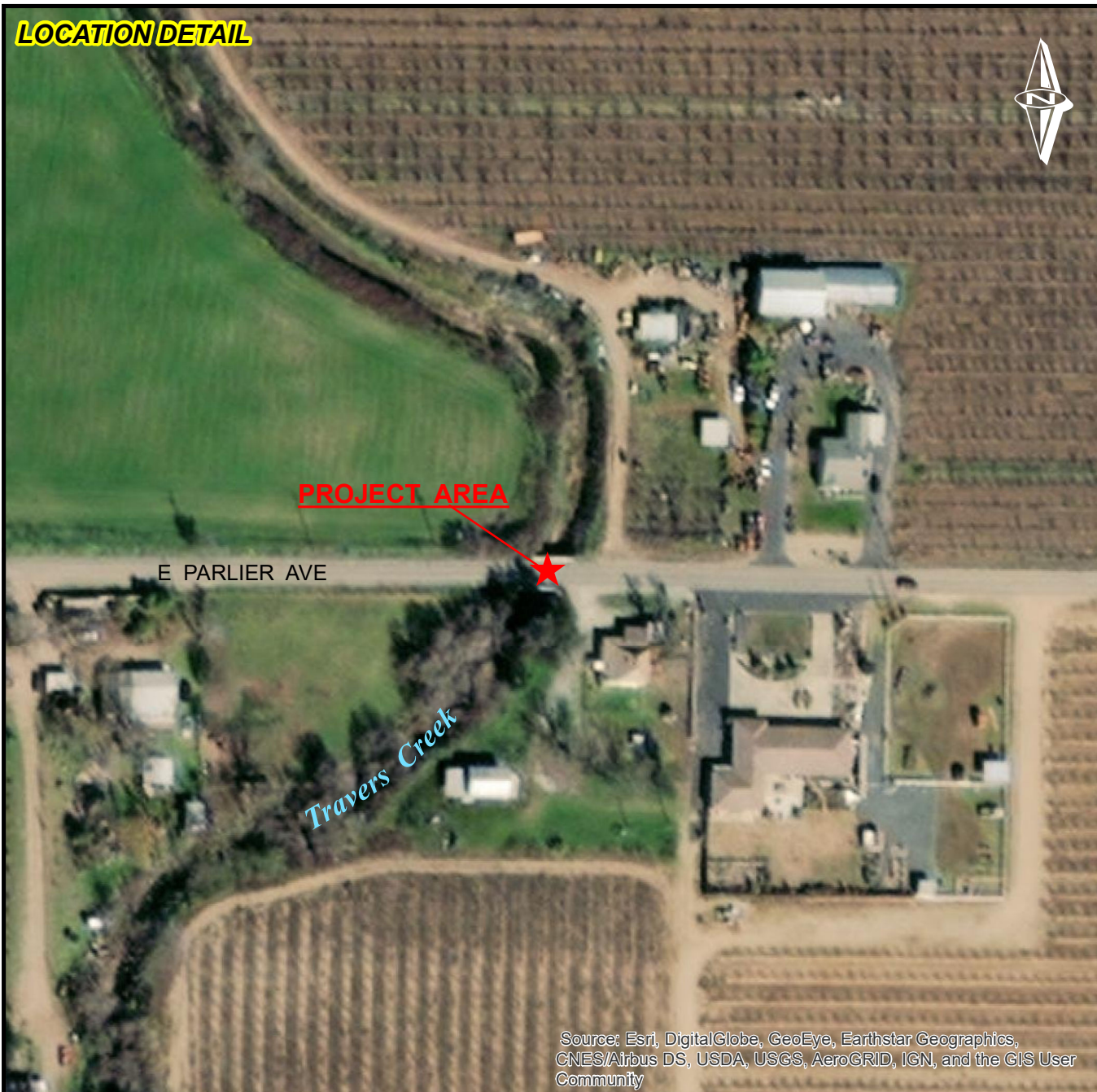
	DATE:	SCALE IN FEET
DESIGNED: D.N.	06/25/21	
DRAWN: D.N.	06/25/21	
STATE BRIDGE NO.	42C0413	



DEPARTMENT OF PUBLIC WORKS & PLANNING

**HIGHWAY BRIDGE PROGRAM  
LINCOLN AVENUE BRIDGE REPLACEMENT  
OVER TRAVERS CREEK BRLO-5942(226)**

**LOCATION DETAIL**

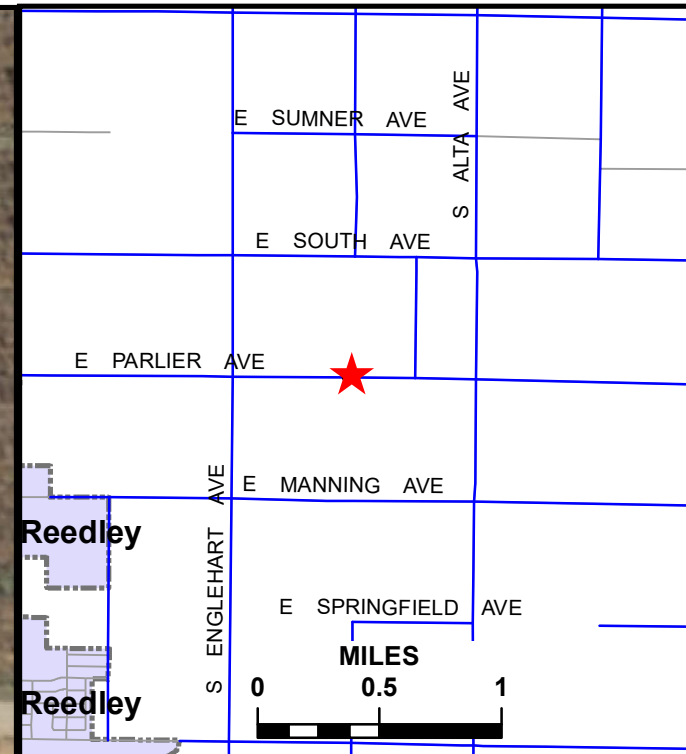


**PROJECT AREA**

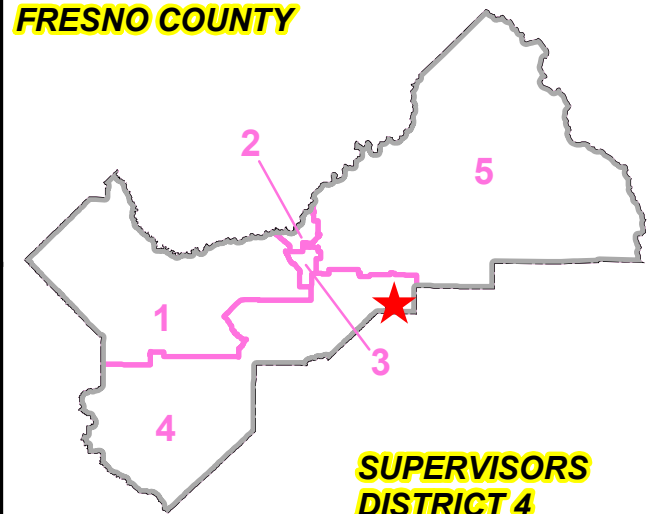
E PARLIER AVE

Travers Creek

Source: Esri, DigitalGlobe, GeoEye, Earthstar Geographics, CNES/Airbus DS, USDA, USGS, AeroGRID, IGN, and the GIS User Community



**FRESNO COUNTY**



**SUPERVISORS DISTRICT 4**

	DATE:	SCALE IN FEET
DESIGNED: D.N.	06/25/21	
DRAWN: D.N.	06/25/21	
STATE BRIDGE NO. 42C0417		



DEPARTMENT OF PUBLIC WORKS & PLANNING

**HIGHWAY BRIDGE PROGRAM  
PARLIER AVENUE BRIDGE REPLACEMENT  
OVER TRAVERS CREEK BRLO-5942(227)**