

BEFORE THE BOARD OF SUPERVISORS
OF THE COUNTY OF FRESNO
STATE OF CALIFORNIA

IN THE MATTER OF: AMENDING)
ESTABLISHED DRAINAGE COSTS AND) RESOLUTION
FEES FOR THE LOCAL DRAINAGE AND)
FLOOD CONTROL MASTER PLAN)

WHEREAS, the Board of Supervisors of the County of Fresno has enacted Chapter 17.64, Title 17 of the Fresno County Ordinance Code, which ordinance is hereby incorporated herein by this reference, creating and establishing the authority for imposing and charging fees for the construction of planned local storm drainage facilities pursuant to the adopted Storm Drainage and Flood Control Master Plan; and

WHEREAS, an amended Storm Drainage and Flood Control Master Plan Map (Exhibit "A" hereto) specifying public facilities and improvements, existing and proposed, which are necessary to provide drainage service and flood control within the respective local drainage areas specified therein has been presented to the Board of Supervisors of the County of Fresno; and

WHEREAS, a fee study entitled "2022 Drainage Fee Schedule" ("Fee Study") has been conducted of the impacts of contemplated future development on the existing storm drainage services and facilities in the local drainage areas of the Fresno Metropolitan Flood Control District ("District") and the County of Fresno ("County") listed in Exhibit "B" attached hereto, along with an analysis of new, improved or expanded public facilities, the estimated costs of those improvements, and the schedule of per gross acre fees calculated to raise the sum of money necessary to pay the estimated total cost of local drainage facilities in said local drainage areas; and

WHEREAS, the Fee Study was available at the District's office for public inspection and review ten (10) days prior to this public hearing and notice was given in compliance with the requirements therefor, and

1 WHEREAS, a public hearing was held pursuant to the public notice cited herein at a regularly
2 scheduled meeting of the Board of Supervisors of the County of Fresno; and

3 WHEREAS, the Board of Supervisors of the County of Fresno finds as follows:

4 A. The purpose of this fee is to finance facilities within the County and District required for
5 the removal of surface and storm water; attributable to development; to obviate the menace to the public
6 health, safety and welfare arising from inadequate provision for removal of surface and storm waters
7 occurring as the result of development of property; to prevent deterioration of property values and
8 impairment of conditions making for desirable residential, commercial or industrial development, as the
9 case may be, which would result from the failure to construct planned local drainage facilities relative to
10 development of property; and to prevent deterioration of public streets and other public facilities which
11 would result from failure to construct planned local drainage facilities concurrently with development;

12 B. The fees collected pursuant to Chapter 17.64, Title 17 of the Fresno County Code and
13 this Resolution shall be used to finance only the public facilities described or identified in Exhibit "A,"
14 attached hereto;

15 C. After considering said Map and Fee Study and analysis prepared by the District, in
16 addition to the "Storm Drainage and Flood Control Master Plan," the "Fresno County General Plan," and
17 the various community and specific plans; and the information and testimony received at this public
18 hearing, the Board of Supervisors approves said Map and said study, and incorporates such herein. The
19 Board further finds that all development in the subject area will generate the needs, as described in this
20 recital for storm drainage facilities within the impacted area as described in Exhibit "A", and generates
21 an unmet need for storm drainage facilities and services within the impacted area;

22 D. There is a need in this described impact area for storm drainage facilities which have not
23 been constructed or have been constructed, and development will contribute its fair share towards these
24 facility costs through this fee, and said facilities have been called for in, or are consistent with, the
25 County's General Plan;

26 E. The facts and evidence presented establish that there is a reasonable relationship
27 between the need for the described public facilities and the impacts of the types of development as
28 described in Exhibit "A" and Exhibit "B" for which the corresponding fee set forth in Exhibit "B" is charged.

1 There is a reasonable relationship between the fee's use and the development of the lands in the service
2 area for which the fee is charged, as these reasonable relationships or nexuses are described in more
3 detail in the Fee Study and Map referred to above;

4 F. The Storm Drainage and Flood Control Master Plan Map attached hereto as Exhibit "A"
5 and the storm drainage fees set forth in Exhibit "B", as adopted by Paragraphs 2 and 3 herein below,
6 revise the Storm Drainage and Flood Control Master Plan, are in conformity with the County's General
7 Plan and are in compliance with Section 66483 of the California Government Code;

8 G. The cost estimates set forth in Exhibit "B" are reasonable cost estimates for constructing
9 these facilities and the fee schedule is predicated on said estimates and is to generate fees by
10 development which will not exceed the total of these costs;

11 H. After considering said Map and Fee Study and analysis prepared by the District, in
12 addition to the "Storm Drainage and Flood Control Master Plan," the "Fresno County General Plan," and
13 the various community and specific plans; and the information and testimony received at this public
14 hearing, the Board of Supervisors approves said Map and said study, and incorporates such herein. The
15 Board further finds that all development in the subject area will generate the needs, as described in this
16 recital for storm drainage facilities within the impacted area as described in Exhibit "A", and generates
17 an unmet need for storm drainage facilities and services within the impacted area.

18 I. There is a need in this described impact area for storm drainage facilities which have not
19 been constructed or have been constructed, and development will contribute its fair share towards these
20 facility costs through this fee, and said facilities have been called for in, or are consistent with, the
21 County's General Plan;

22 J. The Storm Drainage and Flood Control Master Plan Map attached hereto as Exhibit "A"
23 and the storm drainage fees set forth in Exhibit "B", as adopted by Paragraphs 2 and 3 herein below,
24 revise the Storm Drainage and Flood Control Master Plan, are in conformity with the County's General
25 Plan and are in compliance with Section 66483 of the California Government Code;

26 NOW, THEREFORE, it is hereby resolved by the Board of Supervisors of the County of Fresno
27 that:

28

1 1. The above recitals are true and correct, and this Board of Supervisors so finds and
2 determines.

3 2. The Storm Drainage and Flood Control Master Plan is hereby amended to include that
4 Storm Drain and Flood Control Master Plan Map attached hereto as Exhibit "A" as supported by Exhibit
5 "B".

6 3. The schedule of drainage fees for those respective local drainage areas listed in Exhibit
7 "B" hereto is hereby amended as set forth in said Exhibit "B". The District shall prepare, and provide to
8 the County, a 2022 schedule of drainage fees for each of its local drainage areas, which shall include
9 the amendments adopted hereby. Fees shall be paid in accordance with the Drainage Fee Ordinances
10 according to said 2022 drainage fee schedule.

11 4. The fee shall be solely used to pay: (a) costs related to the design, administration and
12 construction of the described public storm water facilities; (b) for reimbursing the District for the
13 development's fair share of those capital improvements constructed by the District; or (c) to reimburse
14 other developers who have constructed public facilities in each service area where those facilities were
15 beyond that needed to mitigate the impacts of the other developers' project or projects and where
16 reimbursement is provided for under the Drainage Fee Ordinance or the Fresno County Ordinance.

17 5. The District, pursuant to Chapter 17.64 of Title 17 of the Fresno County Ordinance Code,
18 shall review the estimated cost of the described capital improvements for which this fee is charged, the
19 continued or expanded need therefore, and the reasonable relationship between such facility needs and
20 the varying types and development. The Manager shall report the findings to the Board of Supervisors
21 and recommend any adjustment to this fee or other action as may be needed.

22 6. Pursuant to California Government Code 66022, any judicial action or proceeding to
23 attack, review, set aside, void or annul this Resolution shall be brought within 120 days of the effective
24 date hereof, which shall be 60 days after the date of adoption hereof.

25 7. The Ordinances of the County of Fresno has an administrative mechanism whereby a
26 property owner who seeks to develop property within the boundaries of the County of Fresno and the
27 Fresno Metropolitan Flood Control District can challenge the fees imposed thereunder only by first paying
28 said fees under protest. Developers of property within the Fresno Metropolitan Flood Control District

1 shall adhere to the applicable ordinance of the County of Fresno under which it is required that drainage
2 fees must be paid before development is allowed, and such fee may be paid under protest.

3
4 THE FOREGOING, was passed and adopted by the following vote of the Board of
5 Supervisors of the County of Fresno this 1st day of February, 2022 to wit:

6
7 AYES: Supervisors Brandau, Magsig, Mendes, Pacheco, Quintero

8 NOES: None

9 ABSENT: None

10 ABSTAINED: None

11 VACANT: None

12
13 

14 _____
15 Brian Pacheco, Chairman of the Board of
16 Supervisors of the County of Fresno

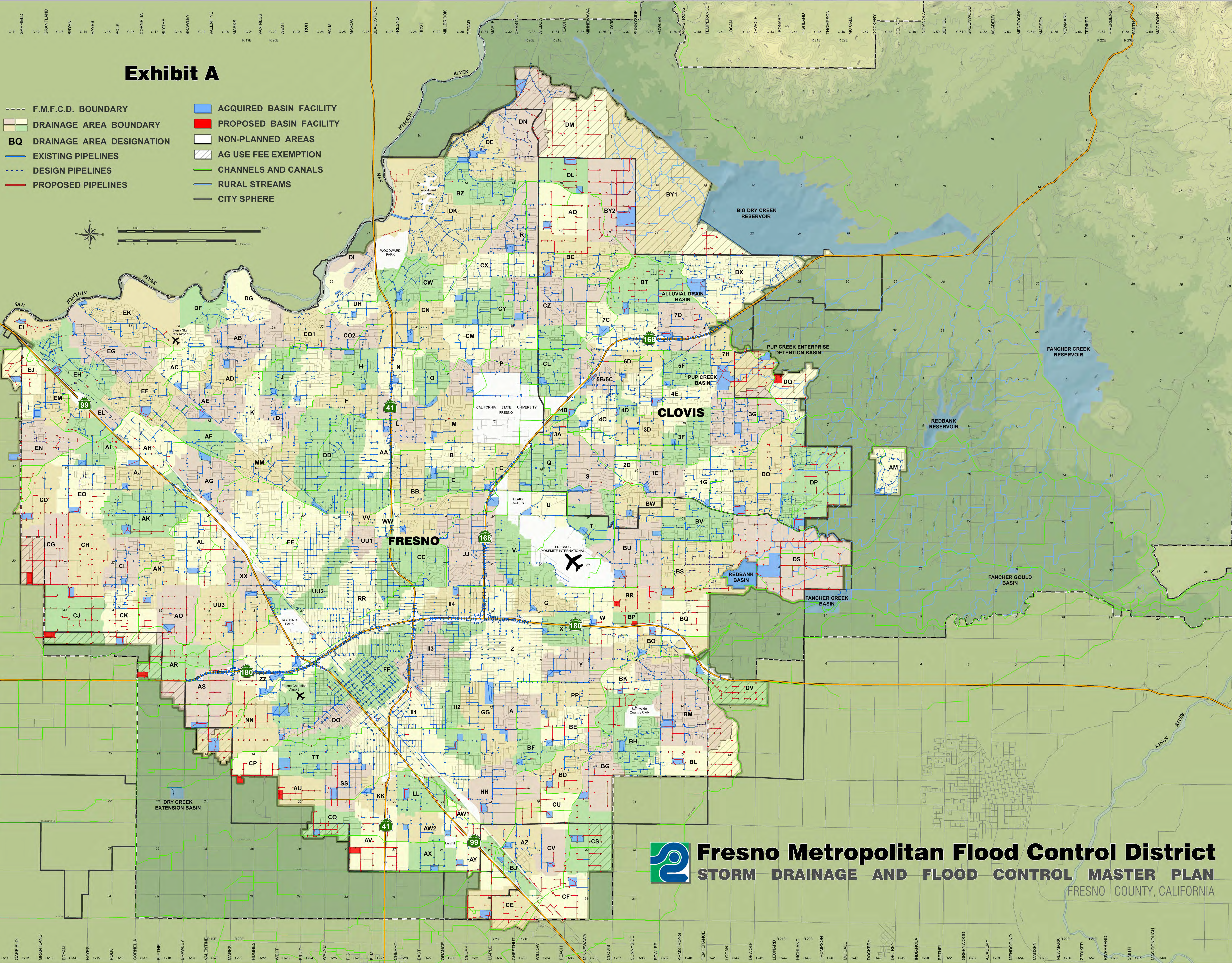
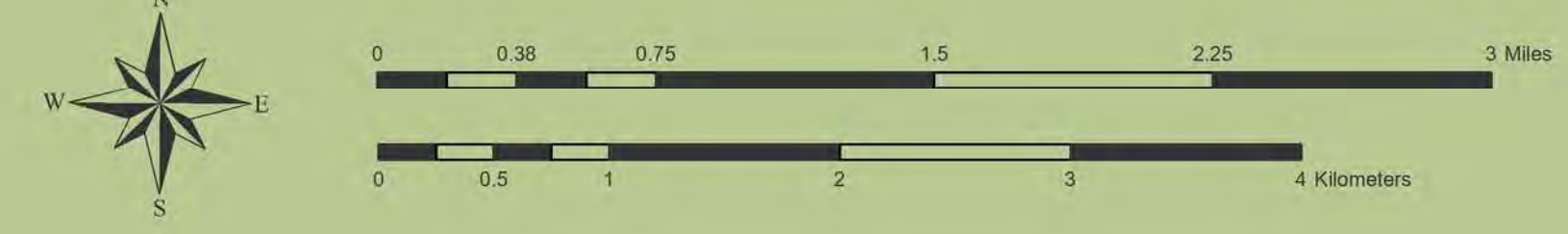
17 **ATTEST:**
18 Bernice E. Seidel
19 Clerk of the Board of Supervisors
20 County of Fresno, State of California

21 By:  _____
22 Deputy

23
24
25
26
27
28

Exhibit A

- F.M.F.C.D. BOUNDARY
- DRAINAGE AREA BOUNDARY
- BQ DRAINAGE AREA DESIGNATION
- EXISTING PIPELINES
- - - DESIGN PIPELINES
- PROPOSED PIPELINES
- ACQUIRED BASIN FACILITY
- PROPOSED BASIN FACILITY
- NON-PLANNED AREAS
- ▨ AG USE FEE EXEMPTION
- CHANNELS AND CANALS
- RURAL STREAMS
- CITY SPHERE



Fresno Metropolitan Flood Control District
STORM DRAINAGE AND FLOOD CONTROL MASTER PLAN
 FRESNO COUNTY, CALIFORNIA

EXHIBIT B

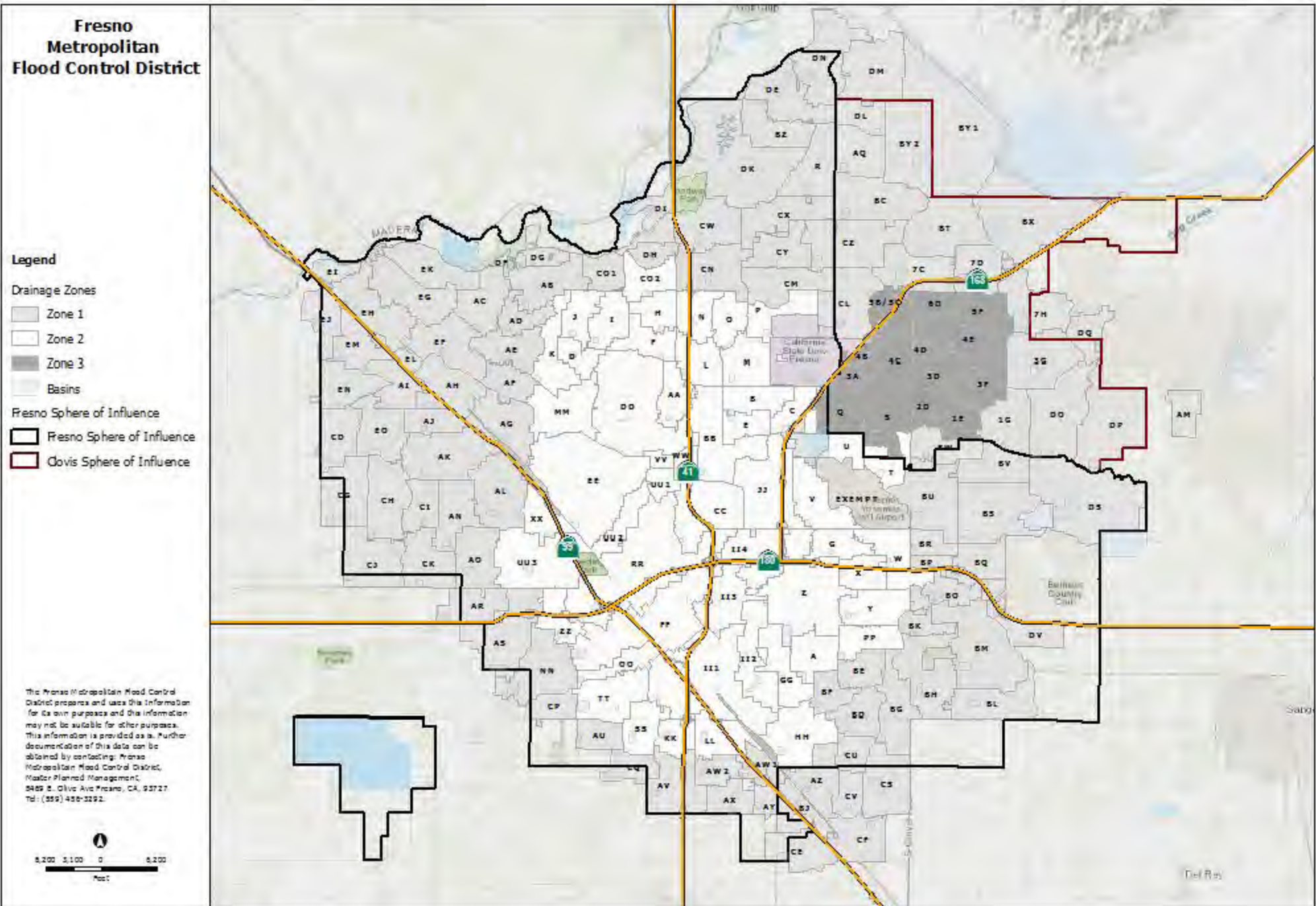
Fresno Metropolitan Flood Control District



2022 DRAINAGE FEE SCHEDULE

Fresno County

Effective Date: 3/1/2022



DRAINAGE FEE SCHEDULE FOR ZONE 1: PLANNED LOCAL DRAINAGE AREAS

Area		AE-5, A-L, O	A1, A2, RR	R-1-E, R-1-EH, R-A	R-1-A, R-1-AH	R-1-B, R-1-C, RE	R-1 40%	R-1 45%	R-1 50%	R-2, M-H	R-3	R-4, T-P	M-1, M-2, M-3, C-R, M-1-P, S-L	C-P, C-M, R-P	C-1, C-2, C-3, C-4, C-5, C-6, C-L, P	Total Cost
R	BASIN	\$1,430	\$1,630	\$2,050	\$2,450	\$2,870	\$3,070	\$3,220	\$3,380	\$3,380	\$3,780	\$4,600	\$6,690	\$7,170	\$7,680	\$3,037,290
	PIPE	\$1,840	\$2,080	\$2,770	\$3,010	\$3,260	\$3,390	\$3,500	\$3,600	\$3,600	\$3,850	\$4,110	\$4,780	\$5,050	\$5,330	\$2,830,980
	TOTAL	\$3,270	\$3,710	\$4,820	\$5,460	\$6,130	\$6,460	\$6,720	\$6,980	\$6,980	\$7,630	\$8,710	\$11,470	\$12,220	\$13,010	\$5,868,270
AB	BASIN	\$1,060	\$1,210	\$1,520	\$1,820	\$2,120	\$2,270	\$2,390	\$2,510	\$2,510	\$2,800	\$3,410	\$4,960	\$5,310	\$5,690	\$1,824,370
	PIPE	\$1,000	\$1,130	\$1,500	\$1,630	\$1,770	\$1,840	\$1,900	\$1,950	\$1,950	\$2,090	\$2,230	\$2,590	\$2,740	\$2,890	\$1,420,070
	TOTAL	\$2,060	\$2,340	\$3,020	\$3,450	\$3,890	\$4,110	\$4,290	\$4,460	\$4,460	\$4,890	\$5,640	\$7,550	\$8,050	\$8,580	\$3,244,440
AC	BASIN	\$640	\$730	\$920	\$1,100	\$1,280	\$1,370	\$1,440	\$1,520	\$1,520	\$1,700	\$2,060	\$3,000	\$3,210	\$3,440	\$1,095,117
	PIPE	\$890	\$1,010	\$1,340	\$1,460	\$1,580	\$1,650	\$1,700	\$1,740	\$1,740	\$1,870	\$1,990	\$2,320	\$2,450	\$2,580	\$1,164,819
	TOTAL	\$1,530	\$1,740	\$2,260	\$2,560	\$2,860	\$3,020	\$3,140	\$3,260	\$3,260	\$3,570	\$4,050	\$5,320	\$5,660	\$6,020	\$2,259,936
AD	BASIN	\$1,480	\$1,690	\$2,120	\$2,530	\$2,960	\$3,170	\$3,330	\$3,490	\$3,490	\$3,910	\$4,750	\$6,910	\$7,400	\$7,930	\$1,204,600
	PIPE	\$480	\$540	\$720	\$780	\$840	\$880	\$910	\$930	\$930	\$1,000	\$1,060	\$1,230	\$1,310	\$1,380	\$330,500
	TOTAL	\$1,960	\$2,230	\$2,840	\$3,310	\$3,800	\$4,050	\$4,240	\$4,420	\$4,420	\$4,910	\$5,810	\$8,140	\$8,710	\$9,310	\$1,535,100
AE	BASIN	\$1,940	\$2,220	\$2,780	\$3,320	\$3,890	\$4,160	\$4,370	\$4,590	\$4,590	\$5,130	\$6,240	\$9,070	\$9,720	\$10,420	\$2,734,680
	PIPE	\$630	\$710	\$950	\$1,030	\$1,120	\$1,160	\$1,200	\$1,230	\$1,230	\$1,320	\$1,410	\$1,640	\$1,730	\$1,830	\$716,550
	TOTAL	\$2,570	\$2,930	\$3,730	\$4,350	\$5,010	\$5,320	\$5,570	\$5,820	\$5,820	\$6,450	\$7,650	\$10,710	\$11,450	\$12,250	\$3,451,230
AF	BASIN	\$900	\$1,030	\$1,290	\$1,540	\$1,800	\$1,930	\$2,020	\$2,120	\$2,120	\$2,370	\$2,890	\$4,200	\$4,500	\$4,820	\$1,512,650
	PIPE	\$500	\$570	\$760	\$820	\$890	\$930	\$960	\$980	\$980	\$1,050	\$1,120	\$1,300	\$1,380	\$1,460	\$510,250
	TOTAL	\$1,400	\$1,600	\$2,050	\$2,360	\$2,690	\$2,860	\$2,980	\$3,100	\$3,100	\$3,420	\$4,010	\$5,500	\$5,880	\$6,280	\$2,022,900
AG	BASIN	\$520	\$590	\$740	\$880	\$1,030	\$1,110	\$1,160	\$1,220	\$1,220	\$1,360	\$1,660	\$2,410	\$2,580	\$2,770	\$1,431,120
	PIPE	\$1,710	\$1,930	\$2,570	\$2,790	\$3,030	\$3,150	\$3,250	\$3,340	\$3,340	\$3,580	\$3,820	\$4,430	\$4,690	\$4,950	\$2,888,080
	TOTAL	\$2,230	\$2,520	\$3,310	\$3,670	\$4,060	\$4,260	\$4,410	\$4,560	\$4,560	\$4,940	\$5,480	\$6,840	\$7,270	\$7,720	\$4,319,200
AH	BASIN	\$1,490	\$1,700	\$2,130	\$2,540	\$2,980	\$3,180	\$3,350	\$3,510	\$3,510	\$3,930	\$4,780	\$6,950	\$7,440	\$7,970	\$4,696,880
	PIPE	\$2,330	\$2,630	\$3,490	\$3,800	\$4,120	\$4,290	\$4,430	\$4,540	\$4,540	\$4,870	\$5,190	\$6,030	\$6,380	\$6,730	\$4,237,520
	TOTAL	\$3,820	\$4,330	\$5,620	\$6,340	\$7,100	\$7,470	\$7,780	\$8,050	\$8,050	\$8,800	\$9,970	\$12,980	\$13,820	\$14,700	\$8,934,400
AI	BASIN	\$1,660	\$1,890	\$2,370	\$2,830	\$3,310	\$3,550	\$3,730	\$3,910	\$3,910	\$4,370	\$5,320	\$7,740	\$8,280	\$8,880	\$2,730,960
	PIPE	\$3,610	\$4,070	\$5,410	\$5,880	\$6,380	\$6,630	\$6,850	\$7,030	\$7,030	\$7,540	\$8,040	\$9,340	\$9,880	\$10,420	\$3,897,710
	TOTAL	\$5,270	\$5,960	\$7,780	\$8,710	\$9,690	\$10,180	\$10,580	\$10,940	\$10,940	\$11,910	\$13,360	\$17,080	\$18,160	\$19,300	\$6,628,670
AJ	BASIN	\$1,930	\$2,200	\$2,750	\$3,290	\$3,850	\$4,120	\$4,330	\$4,550	\$4,550	\$5,080	\$6,180	\$8,990	\$9,630	\$10,320	\$1,741,860
	PIPE	\$590	\$670	\$890	\$970	\$1,050	\$1,090	\$1,130	\$1,160	\$1,160	\$1,240	\$1,320	\$1,540	\$1,620	\$1,710	\$435,470
	TOTAL	\$2,520	\$2,870	\$3,640	\$4,260	\$4,900	\$5,210	\$5,460	\$5,710	\$5,710	\$6,320	\$7,500	\$10,530	\$11,250	\$12,030	\$2,177,330
AK	BASIN	\$1,170	\$1,330	\$1,670	\$2,000	\$2,340	\$2,500	\$2,630	\$2,760	\$2,760	\$3,090	\$3,750	\$5,460	\$5,840	\$6,260	\$3,554,090
	PIPE	\$2,100	\$2,380	\$3,150	\$3,430	\$3,720	\$3,870	\$3,990	\$4,100	\$4,100	\$4,390	\$4,690	\$5,440	\$5,760	\$6,080	\$4,768,210
	TOTAL	\$3,270	\$3,710	\$4,820	\$5,430	\$6,060	\$6,370	\$6,620	\$6,860	\$6,860	\$7,480	\$8,440	\$10,900	\$11,600	\$12,340	\$8,322,300
AL	BASIN	\$1,150	\$1,310	\$1,640	\$1,960	\$2,300	\$2,460	\$2,580	\$2,710	\$2,710	\$3,030	\$3,690	\$5,360	\$5,740	\$6,150	\$2,803,410
	PIPE	\$2,490	\$2,810	\$3,730	\$4,050	\$4,400	\$4,580	\$4,720	\$4,850	\$4,850	\$5,200	\$5,540	\$6,440	\$6,810	\$7,190	\$4,650,720
	TOTAL	\$3,640	\$4,120	\$5,370	\$6,010	\$6,700	\$7,040	\$7,300	\$7,560	\$7,560	\$8,230	\$9,230	\$11,800	\$12,550	\$13,340	\$7,454,130
AM	BASIN	\$2,370	\$2,370	\$2,970	\$3,550	\$4,150	\$4,450	\$4,670	\$4,900	\$4,900	\$5,480	\$6,670	\$9,700	\$10,390	\$11,130	\$1,260,966
	PIPE	\$5,950	\$5,950	\$7,900	\$8,590	\$9,330	\$9,700	\$10,010	\$10,280	\$10,280	\$11,010	\$11,750	\$13,650	\$14,440	\$15,230	\$2,886,860
	TOTAL	\$8,320	\$8,320	\$10,870	\$12,140	\$13,480	\$14,150	\$14,680	\$15,180	\$15,180	\$16,490	\$18,420	\$23,350	\$24,830	\$26,360	\$4,147,826

DRAINAGE FEE SCHEDULE FOR ZONE 1: PLANNED LOCAL DRAINAGE AREAS

Area		AE-5, A-L, O	A1, A2, RR	R-1-E, R-1-EH, R-A	R-1-A, R-1-AH	R-1-B, R-1-C, RE	R-1 40%	R-1 45%	R-1 50%	R-2, M-H	R-3	R-4, T-P	M-1, M-2, M-3, C-R, M-1-P, S-L	C-P, C-M, R-P	C-1, C-2, C-3, C-4, C-5, C-6, C-L, P	Total Cost
AN	BASIN	\$1,860	\$2,120	\$2,660	\$3,190	\$3,730	\$3,990	\$4,190	\$4,400	\$4,400	\$4,920	\$5,980	\$8,700	\$9,320	\$9,990	\$2,631,910
	PIPE	\$1,950	\$2,200	\$2,920	\$3,170	\$3,440	\$3,580	\$3,700	\$3,790	\$3,790	\$4,070	\$4,340	\$5,040	\$5,330	\$5,620	\$2,318,090
	TOTAL	\$3,810	\$4,320	\$5,580	\$6,360	\$7,170	\$7,570	\$7,890	\$8,190	\$8,190	\$8,990	\$10,320	\$13,740	\$14,650	\$15,610	\$4,950,000
AO	BASIN	\$1,790	\$2,040	\$2,560	\$3,060	\$3,580	\$3,830	\$4,030	\$4,220	\$4,220	\$4,720	\$5,740	\$8,360	\$8,950	\$9,590	\$3,220,500
	PIPE	\$5,340	\$6,040	\$8,010	\$8,710	\$9,460	\$9,830	\$10,150	\$10,420	\$10,420	\$11,170	\$11,910	\$13,840	\$14,640	\$15,440	\$7,201,430
	TOTAL	\$7,130	\$8,080	\$10,570	\$11,770	\$13,040	\$13,660	\$14,180	\$14,640	\$14,640	\$15,890	\$17,650	\$22,200	\$23,590	\$25,030	\$10,421,930
AQ	BASIN	\$1,790	\$2,040	\$2,560	\$3,060	\$3,580	\$3,830	\$4,030	\$4,230	\$4,230	\$4,730	\$5,750	\$8,360	\$8,950	\$9,600	\$3,855,130
	PIPE	\$4,880	\$5,510	\$7,320	\$7,950	\$8,630	\$8,980	\$9,270	\$9,510	\$9,510	\$10,200	\$10,880	\$12,630	\$13,370	\$14,100	\$6,891,230
	TOTAL	\$6,670	\$7,550	\$9,880	\$11,010	\$12,210	\$12,810	\$13,300	\$13,740	\$13,740	\$14,930	\$16,630	\$20,990	\$22,320	\$23,700	\$10,746,360
AR	BASIN	\$1,980	\$2,260	\$2,830	\$3,390	\$3,960	\$4,240	\$4,460	\$4,680	\$4,680	\$5,230	\$6,360	\$9,250	\$9,910	\$10,620	\$4,075,270
	PIPE	\$6,650	\$7,520	\$9,980	\$10,850	\$11,780	\$12,240	\$12,640	\$12,970	\$12,970	\$13,910	\$14,840	\$17,230	\$18,230	\$19,230	\$8,468,130
	TOTAL	\$8,630	\$9,780	\$12,810	\$14,240	\$15,740	\$16,480	\$17,100	\$17,650	\$17,650	\$19,140	\$21,200	\$26,480	\$28,140	\$29,850	\$12,543,400
AS	BASIN	\$1,520	\$1,730	\$2,180	\$2,600	\$3,040	\$3,260	\$3,420	\$3,590	\$3,590	\$4,020	\$4,880	\$7,110	\$7,610	\$8,160	\$4,816,410
	PIPE	\$5,510	\$6,230	\$8,270	\$8,980	\$9,760	\$10,140	\$10,470	\$10,750	\$10,750	\$11,520	\$12,290	\$14,280	\$15,100	\$15,930	\$12,281,120
	TOTAL	\$7,030	\$7,960	\$10,450	\$11,580	\$12,800	\$13,400	\$13,890	\$14,340	\$14,340	\$15,540	\$17,170	\$21,390	\$22,710	\$24,090	\$17,097,530
AU	BASIN	\$4,090	\$4,660	\$5,850	\$6,990	\$8,180	\$8,750	\$9,200	\$9,650	\$9,650	\$10,790	\$13,120	\$19,090	\$20,440	\$21,920	\$3,538,510
	PIPE	\$4,760	\$5,370	\$7,130	\$7,750	\$8,420	\$8,750	\$9,040	\$9,270	\$9,270	\$9,940	\$10,610	\$12,320	\$13,030	\$13,740	\$3,368,730
	TOTAL	\$8,850	\$10,030	\$12,980	\$14,740	\$16,600	\$17,500	\$18,240	\$18,920	\$18,920	\$20,730	\$23,730	\$31,410	\$33,470	\$35,660	\$6,907,240
AV	BASIN	\$1,630	\$1,860	\$2,330	\$2,790	\$3,260	\$3,490	\$3,670	\$3,850	\$3,850	\$4,300	\$5,230	\$7,610	\$8,150	\$8,730	\$5,506,580
	PIPE	\$7,690	\$8,680	\$11,530	\$12,530	\$13,600	\$14,140	\$14,600	\$14,990	\$14,990	\$16,060	\$17,140	\$19,900	\$21,060	\$22,210	\$14,708,180
	TOTAL	\$9,320	\$10,540	\$13,860	\$15,320	\$16,860	\$17,630	\$18,270	\$18,840	\$18,840	\$20,360	\$22,370	\$27,510	\$29,210	\$30,940	\$20,214,760
AW1	BASIN	\$1,330	\$1,510	\$1,900	\$2,270	\$2,650	\$2,840	\$2,980	\$3,130	\$3,130	\$3,500	\$4,260	\$6,190	\$6,630	\$7,110	\$1,952,330
	PIPE	\$7,640	\$8,630	\$11,460	\$12,450	\$13,520	\$14,050	\$14,510	\$14,890	\$14,890	\$15,960	\$17,030	\$19,780	\$20,930	\$22,070	\$6,234,790
	TOTAL	\$8,970	\$10,140	\$13,360	\$14,720	\$16,170	\$16,890	\$17,490	\$18,020	\$18,020	\$19,460	\$21,290	\$25,970	\$27,560	\$29,180	\$8,187,120
AW2	BASIN	\$990	\$1,130	\$1,420	\$1,700	\$1,990	\$2,130	\$2,240	\$2,350	\$2,350	\$2,620	\$3,190	\$4,640	\$4,970	\$5,330	\$1,539,010
	PIPE	\$990	\$1,120	\$1,490	\$1,620	\$1,760	\$1,830	\$1,890	\$1,940	\$1,940	\$2,080	\$2,220	\$2,580	\$2,730	\$2,870	\$854,280
	TOTAL	\$1,980	\$2,250	\$2,910	\$3,320	\$3,750	\$3,960	\$4,130	\$4,290	\$4,290	\$4,700	\$5,410	\$7,220	\$7,700	\$8,200	\$2,393,290
AX	BASIN	\$1,290	\$1,470	\$1,850	\$2,210	\$2,590	\$2,770	\$2,910	\$3,050	\$3,050	\$3,420	\$4,150	\$6,040	\$6,470	\$6,930	\$2,047,230
	PIPE	\$2,220	\$2,510	\$3,330	\$3,620	\$3,930	\$4,080	\$4,220	\$4,330	\$4,330	\$4,640	\$4,950	\$5,750	\$6,080	\$6,410	\$1,947,650
	TOTAL	\$3,510	\$3,980	\$5,180	\$5,830	\$6,520	\$6,850	\$7,130	\$7,380	\$7,380	\$8,060	\$9,100	\$11,790	\$12,550	\$13,340	\$3,994,880
AY	BASIN	\$1,890	\$2,150	\$2,700	\$3,230	\$3,780	\$4,040	\$4,250	\$4,460	\$4,460	\$4,990	\$6,060	\$8,820	\$9,440	\$10,120	\$3,443,240
	PIPE	\$3,290	\$3,720	\$4,940	\$5,360	\$5,830	\$6,060	\$6,250	\$6,420	\$6,420	\$6,880	\$7,340	\$8,520	\$9,020	\$9,510	\$3,327,410
	TOTAL	\$5,180	\$5,870	\$7,640	\$8,590	\$9,610	\$10,100	\$10,500	\$10,880	\$10,880	\$11,870	\$13,400	\$17,340	\$18,460	\$19,630	\$6,770,650
AZ	BASIN	\$560	\$640	\$810	\$960	\$1,130	\$1,210	\$1,270	\$1,330	\$1,330	\$1,490	\$1,810	\$2,630	\$2,820	\$3,020	\$1,517,460
	PIPE	\$2,390	\$2,700	\$3,580	\$3,890	\$4,220	\$4,390	\$4,530	\$4,650	\$4,650	\$4,990	\$5,320	\$6,180	\$6,540	\$6,890	\$3,736,100
	TOTAL	\$2,950	\$3,340	\$4,390	\$4,850	\$5,350	\$5,600	\$5,800	\$5,980	\$5,980	\$6,480	\$7,130	\$8,810	\$9,360	\$9,910	\$5,253,560
BC	BASIN	\$1,820	\$2,080	\$2,610	\$3,120	\$3,640	\$3,900	\$4,100	\$4,300	\$4,300	\$4,810	\$5,850	\$8,510	\$9,110	\$9,770	\$5,005,980
	PIPE	\$3,030	\$3,430	\$4,550	\$4,940	\$5,370	\$5,580	\$5,760	\$5,910	\$5,910	\$6,340	\$6,760	\$7,850	\$8,310	\$8,760	\$6,117,560
	TOTAL	\$4,850	\$5,510	\$7,160	\$8,060	\$9,010	\$9,480	\$9,860	\$10,210	\$10,210	\$11,150	\$12,610	\$16,360	\$17,420	\$18,530	\$11,123,540

DRAINAGE FEE SCHEDULE FOR ZONE 1: PLANNED LOCAL DRAINAGE AREAS

Area		AE-5, A-L, O	A1, A2, RR	R-1-E, R-1-EH, R-A	R-1-A, R-1-AH	R-1-B, R-1-C, RE	R-1 40%	R-1 45%	R-1 50%	R-2, M-H	R-3	R-4, T-P	M-1, M-2, M-3, C-R, M-1-P, S-L	C-P, C-M, R-P	C-1, C-2, C-3, C-4, C-5, C-6, C-L, P	Total Cost
BD	BASIN	\$1,510	\$1,720	\$2,160	\$2,580	\$3,020	\$3,230	\$3,390	\$3,560	\$3,560	\$3,980	\$4,840	\$7,050	\$7,540	\$8,090	\$2,512,240
	PIPE	\$3,190	\$3,610	\$4,790	\$5,210	\$5,650	\$5,880	\$6,070	\$6,230	\$6,230	\$6,670	\$7,120	\$8,270	\$8,750	\$9,230	\$3,556,080
	TOTAL	\$4,700	\$5,330	\$6,950	\$7,790	\$8,670	\$9,110	\$9,460	\$9,790	\$9,790	\$10,650	\$11,960	\$15,320	\$16,290	\$17,320	\$6,068,320
BE	BASIN	\$1,530	\$1,740	\$2,180	\$2,610	\$3,050	\$3,260	\$3,430	\$3,600	\$3,600	\$4,030	\$4,900	\$7,120	\$7,630	\$8,180	\$1,397,560
	PIPE	\$2,680	\$3,020	\$4,010	\$4,360	\$4,740	\$4,920	\$5,080	\$5,220	\$5,220	\$5,590	\$5,970	\$6,930	\$7,330	\$7,730	\$2,100,940
	TOTAL	\$4,210	\$4,760	\$6,190	\$6,970	\$7,790	\$8,180	\$8,510	\$8,820	\$8,820	\$9,620	\$10,870	\$14,050	\$14,960	\$15,910	\$3,498,500
BF	BASIN	\$2,080	\$2,380	\$2,980	\$3,570	\$4,170	\$4,460	\$4,690	\$4,920	\$4,920	\$5,500	\$6,690	\$9,740	\$10,420	\$11,180	\$1,797,290
	PIPE	\$1,390	\$1,570	\$2,080	\$2,260	\$2,460	\$2,550	\$2,640	\$2,710	\$2,710	\$2,900	\$3,090	\$3,590	\$3,800	\$4,010	\$973,050
	TOTAL	\$3,470	\$3,950	\$5,060	\$5,830	\$6,630	\$7,010	\$7,330	\$7,630	\$7,630	\$8,400	\$9,780	\$13,330	\$14,220	\$15,190	\$2,770,340
BG	BASIN	\$1,730	\$1,980	\$2,480	\$2,970	\$3,470	\$3,710	\$3,900	\$4,090	\$4,090	\$4,580	\$5,570	\$8,100	\$8,670	\$9,300	\$4,050,010
	PIPE	\$3,610	\$4,080	\$5,420	\$5,890	\$6,390	\$6,640	\$6,860	\$7,040	\$7,040	\$7,550	\$8,050	\$9,350	\$9,890	\$10,430	\$5,639,280
	TOTAL	\$5,340	\$6,060	\$7,900	\$8,860	\$9,860	\$10,350	\$10,760	\$11,130	\$11,130	\$12,130	\$13,620	\$17,450	\$18,560	\$19,730	\$9,689,290
BH	BASIN	\$1,010	\$1,150	\$1,440	\$1,730	\$2,020	\$2,160	\$2,270	\$2,380	\$2,380	\$2,670	\$3,240	\$4,720	\$5,050	\$5,420	\$2,026,790
	PIPE	\$4,360	\$4,930	\$6,550	\$7,110	\$7,720	\$8,030	\$8,290	\$8,510	\$8,510	\$9,120	\$9,730	\$11,300	\$11,960	\$12,610	\$7,690,260
	TOTAL	\$5,370	\$6,080	\$7,990	\$8,840	\$9,740	\$10,190	\$10,560	\$10,890	\$10,890	\$11,790	\$12,970	\$16,020	\$17,010	\$18,030	\$9,717,050
BJ	BASIN	\$990	\$1,120	\$1,410	\$1,680	\$1,970	\$2,110	\$2,220	\$2,330	\$2,330	\$2,600	\$3,160	\$4,600	\$4,930	\$5,280	\$1,225,630
	PIPE	\$3,450	\$3,900	\$5,180	\$5,630	\$6,110	\$6,350	\$6,560	\$6,730	\$6,730	\$7,220	\$7,700	\$8,940	\$9,460	\$9,980	\$2,376,340
	TOTAL	\$4,440	\$5,020	\$6,590	\$7,310	\$8,080	\$8,460	\$8,780	\$9,060	\$9,060	\$9,820	\$10,860	\$13,540	\$14,390	\$15,260	\$3,601,970
BK	BASIN	\$2,370	\$2,710	\$3,390	\$4,060	\$4,750	\$5,080	\$5,340	\$5,600	\$5,600	\$6,270	\$7,620	\$11,080	\$11,870	\$12,720	\$2,407,350
	PIPE	\$2,930	\$3,310	\$4,400	\$4,780	\$5,190	\$5,390	\$5,570	\$5,710	\$5,710	\$6,120	\$6,530	\$7,590	\$8,030	\$8,470	\$1,893,940
	TOTAL	\$5,300	\$6,020	\$7,790	\$8,840	\$9,940	\$10,470	\$10,910	\$11,310	\$11,310	\$12,390	\$14,150	\$18,670	\$19,900	\$21,190	\$4,301,290
BL	BASIN	\$1,690	\$1,930	\$2,420	\$2,890	\$3,380	\$3,620	\$3,810	\$3,990	\$3,990	\$4,460	\$5,430	\$7,900	\$8,460	\$9,060	\$4,949,210
	PIPE	\$5,260	\$5,940	\$7,890	\$8,570	\$9,310	\$9,680	\$9,990	\$10,260	\$10,260	\$10,990	\$11,730	\$13,620	\$14,410	\$15,200	\$9,662,820
	TOTAL	\$6,950	\$7,870	\$10,310	\$11,460	\$12,690	\$13,300	\$13,800	\$14,250	\$14,250	\$15,450	\$17,160	\$21,520	\$22,870	\$24,260	\$14,612,030
BM	BASIN	\$910	\$1,040	\$1,300	\$1,560	\$1,820	\$1,950	\$2,050	\$2,150	\$2,150	\$2,400	\$2,920	\$4,250	\$4,550	\$4,880	\$3,714,150
	PIPE	\$3,980	\$4,500	\$5,980	\$6,490	\$7,050	\$7,330	\$7,570	\$7,770	\$7,770	\$8,330	\$8,890	\$10,320	\$10,920	\$11,520	\$12,016,230
	TOTAL	\$4,890	\$5,540	\$7,280	\$8,050	\$8,870	\$9,280	\$9,620	\$9,920	\$9,920	\$10,730	\$11,810	\$14,570	\$15,470	\$16,400	\$15,730,380
BO	BASIN	\$1,620	\$1,840	\$2,310	\$2,770	\$3,230	\$3,460	\$3,640	\$3,820	\$3,820	\$4,270	\$5,190	\$7,550	\$8,090	\$8,670	\$1,849,550
	PIPE	\$1,970	\$2,230	\$2,960	\$3,220	\$3,500	\$3,630	\$3,750	\$3,850	\$3,850	\$4,130	\$4,400	\$5,110	\$5,410	\$5,710	\$1,721,030
	TOTAL	\$3,590	\$4,070	\$5,270	\$5,990	\$6,730	\$7,090	\$7,390	\$7,670	\$7,670	\$8,400	\$9,590	\$12,660	\$13,500	\$14,380	\$3,570,580
BP	BASIN	\$3,520	\$4,020	\$5,040	\$6,030	\$7,050	\$7,540	\$7,930	\$8,320	\$8,320	\$9,310	\$11,310	\$16,460	\$17,620	\$18,890	\$2,328,970
	PIPE	\$4,570	\$5,160	\$6,850	\$7,440	\$8,080	\$8,400	\$8,680	\$8,910	\$8,910	\$9,540	\$10,180	\$11,830	\$12,510	\$13,200	\$1,673,570
	TOTAL	\$8,090	\$9,180	\$11,890	\$13,470	\$15,130	\$15,940	\$16,610	\$17,230	\$17,230	\$18,850	\$21,490	\$28,290	\$30,130	\$32,090	\$4,002,540
BQ	BASIN	\$1,530	\$1,750	\$2,190	\$2,620	\$3,070	\$3,280	\$3,450	\$3,620	\$3,620	\$4,050	\$4,920	\$7,160	\$7,660	\$8,210	\$2,799,660
	PIPE	\$3,780	\$4,270	\$5,660	\$6,150	\$6,680	\$6,950	\$7,170	\$7,360	\$7,360	\$7,890	\$8,420	\$9,780	\$10,350	\$10,910	\$4,414,650
	TOTAL	\$5,310	\$6,020	\$7,850	\$8,770	\$9,750	\$10,230	\$10,620	\$10,980	\$10,980	\$11,940	\$13,340	\$16,940	\$18,010	\$19,120	\$7,214,310
BR	BASIN	\$2,330	\$2,660	\$3,330	\$3,990	\$4,660	\$4,990	\$5,250	\$5,500	\$5,500	\$6,160	\$7,490	\$10,890	\$11,660	\$12,500	\$2,973,340
	PIPE	\$4,170	\$4,710	\$6,260	\$6,800	\$7,380	\$7,680	\$7,930	\$8,130	\$8,130	\$8,720	\$9,300	\$10,800	\$11,430	\$12,060	\$2,949,740
	TOTAL	\$6,500	\$7,370	\$9,590	\$10,790	\$12,040	\$12,670	\$13,180	\$13,630	\$13,630	\$14,880	\$16,790	\$21,690	\$23,090	\$24,560	\$5,923,080

DRAINAGE FEE SCHEDULE FOR ZONE 1: PLANNED LOCAL DRAINAGE AREAS

Area		AE-5, A-L, O	A1, A2, RR	R-1-E, R-1-EH, R-A	R-1-A, R-1-AH	R-1-B, R-1-C, RE	R-1 40%	R-1 45%	R-1 50%	R-2, M-H	R-3	R-4, T-P	M-1, M-2, M-3, C-R, M-1-P, S-L	C-P, C-M, R-P	C-1, C-2, C-3, C-4, C-5, C-6, C-L, P	Total Cost
BS	BASIN	\$1,700	\$1,930	\$2,430	\$2,900	\$3,390	\$3,630	\$3,820	\$4,000	\$4,000	\$4,480	\$5,440	\$7,920	\$8,480	\$9,090	\$4,954,320
	PIPE	\$5,200	\$5,880	\$7,810	\$8,480	\$9,210	\$9,580	\$9,890	\$10,150	\$10,150	\$10,880	\$11,610	\$13,480	\$14,260	\$15,040	\$11,699,310
	TOTAL	\$6,900	\$7,810	\$10,240	\$11,380	\$12,600	\$13,210	\$13,710	\$14,150	\$14,150	\$15,360	\$17,050	\$21,400	\$22,740	\$24,130	\$16,653,630
BT	BASIN	\$2,330	\$2,650	\$3,330	\$3,980	\$4,660	\$4,980	\$5,240	\$5,490	\$5,490	\$6,150	\$7,470	\$10,870	\$11,640	\$12,480	\$4,836,130
	PIPE	\$4,850	\$5,490	\$7,280	\$7,910	\$8,590	\$8,930	\$9,220	\$9,470	\$9,470	\$10,150	\$10,830	\$12,570	\$13,300	\$14,030	\$8,899,510
	TOTAL	\$7,180	\$8,140	\$10,610	\$11,890	\$13,250	\$13,910	\$14,460	\$14,960	\$14,960	\$16,300	\$18,300	\$23,440	\$24,940	\$26,510	\$13,735,640
BU	BASIN	\$550	\$630	\$790	\$940	\$1,100	\$1,180	\$1,240	\$1,300	\$1,300	\$1,450	\$1,760	\$2,570	\$2,750	\$2,940	\$2,468,350
	PIPE	\$2,020	\$2,280	\$3,030	\$3,290	\$3,580	\$3,720	\$3,840	\$3,940	\$3,940	\$4,220	\$4,500	\$5,230	\$5,530	\$5,840	\$5,320,610
	TOTAL	\$2,570	\$2,910	\$3,820	\$4,230	\$4,680	\$4,900	\$5,080	\$5,240	\$5,240	\$5,670	\$6,260	\$7,800	\$8,280	\$8,780	\$7,788,960
BV	BASIN	\$1,000	\$1,140	\$1,430	\$1,720	\$2,010	\$2,150	\$2,260	\$2,370	\$2,370	\$2,650	\$3,220	\$4,680	\$5,020	\$5,380	\$1,442,990
	PIPE	\$2,280	\$2,570	\$3,420	\$3,710	\$4,030	\$4,190	\$4,330	\$4,440	\$4,440	\$4,760	\$5,080	\$5,900	\$6,240	\$6,580	\$2,691,610
	TOTAL	\$3,280	\$3,710	\$4,850	\$5,430	\$6,040	\$6,340	\$6,590	\$6,810	\$6,810	\$7,410	\$8,300	\$10,580	\$11,260	\$11,960	\$4,134,600
BW	BASIN	\$970	\$1,110	\$1,390	\$1,660	\$1,940	\$2,080	\$2,190	\$2,300	\$2,300	\$2,570	\$3,120	\$4,540	\$4,860	\$5,210	\$1,211,930
	PIPE	\$1,090	\$1,240	\$1,640	\$1,780	\$1,940	\$2,010	\$2,080	\$2,130	\$2,130	\$2,290	\$2,440	\$2,830	\$3,000	\$3,160	\$1,082,900
	TOTAL	\$2,060	\$2,350	\$3,030	\$3,440	\$3,880	\$4,090	\$4,270	\$4,430	\$4,430	\$4,860	\$5,560	\$7,370	\$7,860	\$8,370	\$2,294,830
BX	BASIN	\$1,550	\$1,760	\$2,210	\$2,650	\$3,100	\$3,310	\$3,480	\$3,650	\$3,650	\$4,090	\$4,970	\$7,230	\$7,740	\$8,300	\$6,284,770
	PIPE	\$2,960	\$3,340	\$4,430	\$4,820	\$5,230	\$5,440	\$5,620	\$5,770	\$5,770	\$6,180	\$6,590	\$7,660	\$8,100	\$8,540	\$9,816,340
	TOTAL	\$4,510	\$5,100	\$6,640	\$7,470	\$8,330	\$8,750	\$9,100	\$9,420	\$9,420	\$10,270	\$11,560	\$14,890	\$15,840	\$16,840	\$16,101,110
*Note: A surcharge fee is in effect per Board Resolution Nos. 2017-864 & 2018-908.																
BY1	BASIN	\$1,360	\$1,550	\$1,940	\$2,320	\$2,710	\$2,900	\$3,050	\$3,200	\$3,200	\$3,580	\$4,350	\$6,340	\$6,780	\$7,270	\$3,732,900
	PIPE	\$950	\$1,080	\$1,430	\$1,550	\$1,690	\$1,750	\$1,810	\$1,860	\$1,860	\$1,990	\$2,120	\$2,470	\$2,610	\$2,750	\$2,578,230
	TOTAL	\$2,310	\$2,630	\$3,370	\$3,870	\$4,400	\$4,650	\$4,860	\$5,060	\$5,060	\$5,570	\$6,470	\$8,810	\$9,390	\$10,020	\$6,311,130
BY2	BASIN	\$1,820	\$2,070	\$2,600	\$3,110	\$3,640	\$3,890	\$4,090	\$4,290	\$4,290	\$4,800	\$5,840	\$8,490	\$9,090	\$9,750	\$4,277,390
	PIPE	\$7,210	\$8,150	\$10,820	\$11,760	\$12,770	\$13,270	\$13,710	\$14,070	\$14,070	\$15,080	\$16,090	\$18,680	\$19,770	\$20,850	\$14,222,460
	TOTAL	\$9,030	\$10,220	\$13,420	\$14,870	\$16,410	\$17,160	\$17,800	\$18,360	\$18,360	\$19,880	\$21,930	\$27,170	\$28,860	\$30,600	\$18,499,850
BZ	BASIN	\$2,830	\$3,230	\$4,050	\$4,850	\$5,670	\$6,070	\$6,380	\$6,690	\$6,690	\$7,480	\$9,100	\$13,240	\$14,170	\$15,190	\$3,600,920
	PIPE	\$2,020	\$2,280	\$3,030	\$3,290	\$3,570	\$3,710	\$3,830	\$3,930	\$3,930	\$4,220	\$4,500	\$5,220	\$5,530	\$5,830	\$2,176,590
	TOTAL	\$4,850	\$5,510	\$7,080	\$8,140	\$9,240	\$9,780	\$10,210	\$10,620	\$10,620	\$11,700	\$13,600	\$18,460	\$19,700	\$21,020	\$5,777,510
CD	BASIN	\$2,240	\$2,560	\$3,210	\$3,840	\$4,490	\$4,800	\$5,050	\$5,300	\$5,300	\$5,930	\$7,210	\$10,480	\$11,220	\$12,030	\$3,508,750
	PIPE	\$4,090	\$4,620	\$6,130	\$6,660	\$7,240	\$7,520	\$7,770	\$7,970	\$7,970	\$8,540	\$9,120	\$10,590	\$11,200	\$11,810	\$4,927,970
	TOTAL	\$6,330	\$7,180	\$9,340	\$10,500	\$11,730	\$12,320	\$12,820	\$13,270	\$13,270	\$14,470	\$16,330	\$21,070	\$22,420	\$23,840	\$8,436,720
CE	BASIN	\$1,160	\$1,320	\$1,660	\$1,980	\$2,320	\$2,480	\$2,610	\$2,740	\$2,740	\$3,060	\$3,730	\$5,420	\$5,800	\$6,220	\$3,432,410
	PIPE	\$7,090	\$8,010	\$10,630	\$11,550	\$12,540	\$13,040	\$13,470	\$13,820	\$13,820	\$14,810	\$15,800	\$18,360	\$19,420	\$20,480	\$11,624,830
	TOTAL	\$8,250	\$9,330	\$12,290	\$13,530	\$14,860	\$15,520	\$16,080	\$16,560	\$16,560	\$17,870	\$19,530	\$23,780	\$25,220	\$26,700	\$15,057,240
CF	BASIN	\$940	\$1,070	\$1,340	\$1,600	\$1,870	\$2,010	\$2,110	\$2,210	\$2,210	\$2,470	\$3,010	\$4,380	\$4,690	\$5,020	\$2,887,400
	PIPE	\$6,300	\$7,110	\$9,440	\$10,260	\$11,140	\$11,580	\$11,960	\$12,280	\$12,280	\$13,160	\$14,040	\$16,310	\$17,250	\$18,200	\$10,755,360
	TOTAL	\$7,240	\$8,180	\$10,780	\$11,860	\$13,010	\$13,590	\$14,070	\$14,490	\$14,490	\$15,630	\$17,050	\$20,690	\$21,940	\$23,220	\$13,642,760
CG	BASIN	\$2,990	\$3,410	\$4,280	\$5,120	\$5,990	\$6,410	\$6,740	\$7,070	\$7,070	\$7,900	\$9,610	\$13,980	\$14,970	\$16,050	\$5,628,190
	PIPE	\$5,910	\$6,680	\$8,860	\$9,630	\$10,460	\$10,870	\$11,230	\$11,520	\$11,520	\$12,350	\$13,180	\$15,300	\$16,190	\$17,070	\$9,298,220
	TOTAL	\$8,900	\$10,090	\$13,140	\$14,750	\$16,450	\$17,280	\$17,970	\$18,590	\$18,590	\$20,250	\$22,790	\$29,280	\$31,160	\$33,120	\$14,926,410

DRAINAGE FEE SCHEDULE FOR ZONE 1: PLANNED LOCAL DRAINAGE AREAS

Area		AE-5, A-L, O	A1, A2, RR	R-1-E, R-1-EH, R-A	R-1-A, R-1-AH	R-1-B, R-1-C, RE	R-1 40%	R-1 45%	R-1 50%	R-2, M-H	R-3	R-4, T-P	M-1, M-2, M-3, C-R, M-1-P, S-L	C-P, C-M, R-P	C-1, C-2, C-3, C-4, C-5, C-6, C-L, P	Total Cost
CH	BASIN	\$1,990	\$2,260	\$2,840	\$3,400	\$3,970	\$4,250	\$4,470	\$4,690	\$4,690	\$5,250	\$6,380	\$9,280	\$9,930	\$10,650	\$3,853,320
	PIPE	\$7,410	\$8,370	\$11,110	\$12,070	\$13,110	\$13,630	\$14,070	\$14,440	\$14,440	\$15,480	\$16,520	\$19,180	\$20,290	\$21,410	\$12,061,770
	TOTAL	\$9,400	\$10,630	\$13,950	\$15,470	\$17,080	\$17,880	\$18,540	\$19,130	\$19,130	\$20,730	\$22,900	\$28,460	\$30,220	\$32,060	\$15,915,090
CI	BASIN	\$2,080	\$2,370	\$2,970	\$3,560	\$4,160	\$4,450	\$4,680	\$4,910	\$4,910	\$5,490	\$6,670	\$9,710	\$10,400	\$11,140	\$2,038,220
	PIPE	\$3,390	\$3,830	\$5,080	\$5,520	\$5,990	\$6,230	\$6,430	\$6,600	\$6,600	\$7,080	\$7,550	\$8,770	\$9,280	\$9,790	\$2,769,720
	TOTAL	\$5,470	\$6,200	\$8,050	\$9,080	\$10,150	\$10,680	\$11,110	\$11,510	\$11,510	\$12,570	\$14,220	\$18,480	\$19,680	\$20,930	\$4,807,940
CJ	BASIN	\$2,620	\$2,990	\$3,740	\$4,480	\$5,240	\$5,600	\$5,890	\$6,180	\$6,180	\$6,910	\$8,410	\$12,230	\$13,090	\$14,040	\$4,987,500
	PIPE	\$6,030	\$6,810	\$9,040	\$9,830	\$10,670	\$11,090	\$11,450	\$11,750	\$11,750	\$12,600	\$13,440	\$15,610	\$16,520	\$17,420	\$9,740,390
	TOTAL	\$8,650	\$9,800	\$12,780	\$14,310	\$15,910	\$16,690	\$17,340	\$17,930	\$17,930	\$19,510	\$21,850	\$27,840	\$29,610	\$31,460	\$14,727,890
CK	BASIN	\$2,330	\$2,660	\$3,330	\$3,990	\$4,660	\$4,990	\$5,250	\$5,500	\$5,500	\$6,160	\$7,490	\$10,890	\$11,660	\$12,500	\$3,625,680
	PIPE	\$5,630	\$6,360	\$8,440	\$9,180	\$9,960	\$10,360	\$10,700	\$10,980	\$10,980	\$11,760	\$12,550	\$14,580	\$15,420	\$16,270	\$7,409,100
	TOTAL	\$7,960	\$9,020	\$11,770	\$13,170	\$14,620	\$15,350	\$15,950	\$16,480	\$16,480	\$17,920	\$20,040	\$25,470	\$27,080	\$28,770	\$11,034,780
CL	BASIN	\$850	\$970	\$1,210	\$1,450	\$1,700	\$1,820	\$1,910	\$2,000	\$2,000	\$2,240	\$2,730	\$3,970	\$4,250	\$4,550	\$2,221,940
	PIPE	\$1,170	\$1,330	\$1,760	\$1,910	\$2,080	\$2,160	\$2,230	\$2,290	\$2,290	\$2,450	\$2,620	\$3,040	\$3,220	\$3,390	\$2,230,610
	TOTAL	\$2,020	\$2,300	\$2,970	\$3,360	\$3,780	\$3,980	\$4,140	\$4,290	\$4,290	\$4,690	\$5,350	\$7,010	\$7,470	\$7,940	\$4,452,550
CM	BASIN	\$350	\$400	\$510	\$610	\$710	\$760	\$800	\$840	\$840	\$940	\$1,140	\$1,660	\$1,770	\$1,900	\$926,910
	PIPE	\$740	\$830	\$1,100	\$1,200	\$1,300	\$1,350	\$1,400	\$1,430	\$1,430	\$1,540	\$1,640	\$1,900	\$2,010	\$2,120	\$1,258,840
	TOTAL	\$1,090	\$1,230	\$1,610	\$1,810	\$2,010	\$2,110	\$2,200	\$2,270	\$2,270	\$2,480	\$2,780	\$3,560	\$3,780	\$4,020	\$2,185,750
*Note: A surcharge fee is in effect per Board Resolution No.1228.																
CN	BASIN	\$200	\$220	\$280	\$340	\$390	\$420	\$440	\$460	\$460	\$520	\$630	\$920	\$980	\$1,050	\$648,160
	PIPE	\$890	\$1,010	\$1,340	\$1,460	\$1,580	\$1,640	\$1,700	\$1,740	\$1,740	\$1,870	\$1,990	\$2,310	\$2,450	\$2,580	\$1,839,680
	TOTAL	\$1,090	\$1,230	\$1,620	\$1,800	\$1,970	\$2,060	\$2,140	\$2,200	\$2,200	\$2,390	\$2,620	\$3,230	\$3,430	\$3,630	\$2,487,840
*Note: A surcharge fee is in effect per Board Resolution Nos. 1159, 1342, 1414, & 1422.																
CO1	BASIN	\$530	\$600	\$750	\$900	\$1,050	\$1,130	\$1,180	\$1,240	\$1,240	\$1,390	\$1,690	\$2,460	\$2,630	\$2,820	\$446,571
	PIPE	\$1,640	\$1,850	\$2,460	\$2,670	\$2,900	\$3,020	\$3,120	\$3,200	\$3,200	\$3,430	\$3,660	\$4,250	\$4,490	\$4,740	\$1,191,940
	TOTAL	\$2,170	\$2,450	\$3,210	\$3,570	\$3,950	\$4,150	\$4,300	\$4,440	\$4,440	\$4,820	\$5,350	\$6,710	\$7,120	\$7,560	\$1,638,511
CP	BASIN	\$3,700	\$4,210	\$5,290	\$6,320	\$7,390	\$7,910	\$8,320	\$8,720	\$8,720	\$9,760	\$11,860	\$17,260	\$18,480	\$19,810	\$2,868,880
	PIPE	\$6,910	\$7,810	\$10,370	\$11,270	\$12,230	\$12,720	\$13,130	\$13,480	\$13,480	\$14,440	\$15,410	\$17,900	\$18,940	\$19,970	\$4,262,800
	TOTAL	\$10,610	\$12,020	\$15,660	\$17,590	\$19,620	\$20,630	\$21,450	\$22,200	\$22,200	\$24,200	\$27,270	\$35,160	\$37,420	\$39,780	\$7,131,680
CQ	BASIN	\$2,890	\$3,300	\$4,140	\$4,950	\$5,790	\$6,190	\$6,510	\$6,830	\$6,830	\$7,640	\$9,290	\$13,510	\$14,470	\$15,510	\$3,074,540
	PIPE	\$4,890	\$5,520	\$7,330	\$7,970	\$8,650	\$9,000	\$9,290	\$9,530	\$9,530	\$10,220	\$10,900	\$12,660	\$13,400	\$14,130	\$3,895,180
	TOTAL	\$7,780	\$8,820	\$11,470	\$12,920	\$14,440	\$15,190	\$15,800	\$16,360	\$16,360	\$17,860	\$20,190	\$26,170	\$27,870	\$29,640	\$6,969,720
CS	BASIN	\$680	\$780	\$970	\$1,170	\$1,360	\$1,460	\$1,530	\$1,610	\$1,610	\$1,800	\$2,190	\$3,180	\$3,410	\$3,650	\$2,666,290
	PIPE	\$4,680	\$5,290	\$7,030	\$7,640	\$8,290	\$8,620	\$8,900	\$9,140	\$9,140	\$9,790	\$10,450	\$12,130	\$12,840	\$13,540	\$10,167,680
	TOTAL	\$5,360	\$6,070	\$8,000	\$8,810	\$9,650	\$10,080	\$10,430	\$10,750	\$10,750	\$11,590	\$12,640	\$15,310	\$16,250	\$17,190	\$12,833,970
CU	BASIN	\$1,700	\$1,940	\$2,440	\$2,920	\$3,410	\$3,650	\$3,840	\$4,020	\$4,020	\$4,500	\$5,470	\$7,960	\$8,520	\$9,140	\$2,510,070
	PIPE	\$4,100	\$4,630	\$6,150	\$6,680	\$7,250	\$7,540	\$7,780	\$7,990	\$7,990	\$8,560	\$9,140	\$10,610	\$11,230	\$11,840	\$3,345,280
	TOTAL	\$5,800	\$6,570	\$8,590	\$9,600	\$10,660	\$11,190	\$11,620	\$12,010	\$12,010	\$13,060	\$14,610	\$18,570	\$19,750	\$20,980	\$5,855,350
CV	BASIN	\$1,390	\$1,590	\$1,990	\$2,380	\$2,790	\$2,980	\$3,140	\$3,290	\$3,290	\$3,680	\$4,480	\$6,510	\$6,970	\$7,470	\$2,173,940
	PIPE	\$1,210	\$1,370	\$1,820	\$1,980	\$2,140	\$2,230	\$2,300	\$2,360	\$2,360	\$2,530	\$2,700	\$3,140	\$3,320	\$3,500	\$1,047,620
	TOTAL	\$2,600	\$2,960	\$3,810	\$4,360	\$4,930	\$5,210	\$5,440	\$5,650	\$5,650	\$6,210	\$7,180	\$9,650	\$10,290	\$10,970	\$3,221,560

DRAINAGE FEE SCHEDULE FOR ZONE 1: PLANNED LOCAL DRAINAGE AREAS

Area		AE-5, A-L, O	A1, A2, RR	R-1-E, R-1-EH, R-A	R-1-A, R-1-AH	R-1-B, R-1-C, RE	R-1 40%	R-1 45%	R-1 50%	R-2, M-H	R-3	R-4, T-P	M-1, M-2, M-3, C-R, M-1-P, S-L	C-P, C-M, R-P	C-1, C-2, C-3, C-4, C-5, C-6, C-L, P	Total Cost
CW	BASIN	\$690	\$780	\$980	\$1,170	\$1,370	\$1,470	\$1,540	\$1,620	\$1,620	\$1,810	\$2,200	\$3,200	\$3,430	\$3,670	\$1,694,460
	PIPE	\$600	\$670	\$890	\$970	\$1,050	\$1,100	\$1,130	\$1,160	\$1,160	\$1,250	\$1,330	\$1,540	\$1,630	\$1,720	\$1,005,380
	TOTAL	\$1,290	\$1,450	\$1,870	\$2,140	\$2,420	\$2,570	\$2,670	\$2,780	\$2,780	\$3,060	\$3,530	\$4,740	\$5,060	\$5,390	\$2,699,840
CX	BASIN	\$810	\$920	\$1,160	\$1,390	\$1,620	\$1,740	\$1,820	\$1,910	\$1,910	\$2,140	\$2,600	\$3,790	\$4,050	\$4,350	\$1,465,840
	PIPE	\$1,140	\$1,280	\$1,700	\$1,850	\$2,010	\$2,090	\$2,160	\$2,210	\$2,210	\$2,370	\$2,530	\$2,940	\$3,110	\$3,280	\$1,662,520
	TOTAL	\$1,950	\$2,200	\$2,860	\$3,240	\$3,630	\$3,830	\$3,980	\$4,120	\$4,120	\$4,510	\$5,130	\$6,730	\$7,160	\$7,630	\$3,128,360
CY	BASIN	\$790	\$900	\$1,130	\$1,350	\$1,580	\$1,690	\$1,780	\$1,870	\$1,870	\$2,090	\$2,540	\$3,690	\$3,960	\$4,240	\$1,215,810
	PIPE	\$1,000	\$1,130	\$1,500	\$1,630	\$1,770	\$1,840	\$1,900	\$1,950	\$1,950	\$2,090	\$2,230	\$2,590	\$2,740	\$2,890	\$1,211,940
	TOTAL	\$1,790	\$2,030	\$2,630	\$2,980	\$3,350	\$3,530	\$3,680	\$3,820	\$3,820	\$4,180	\$4,770	\$6,280	\$6,700	\$7,130	\$2,427,750
CZ	BASIN	\$550	\$620	\$780	\$940	\$1,090	\$1,170	\$1,230	\$1,290	\$1,290	\$1,440	\$1,760	\$2,550	\$2,740	\$2,930	\$1,511,580
	PIPE	\$1,260	\$1,420	\$1,880	\$2,050	\$2,220	\$2,310	\$2,380	\$2,450	\$2,450	\$2,620	\$2,800	\$3,250	\$3,440	\$3,630	\$2,786,520
	TOTAL	\$1,810	\$2,040	\$2,660	\$2,990	\$3,310	\$3,480	\$3,610	\$3,740	\$3,740	\$4,060	\$4,560	\$5,800	\$6,180	\$6,560	\$4,298,100
DE	BASIN	\$1,580	\$1,800	\$2,250	\$2,690	\$3,150	\$3,370	\$3,550	\$3,720	\$3,720	\$4,160	\$5,060	\$7,360	\$7,880	\$8,450	\$3,097,350
	PIPE	\$2,100	\$2,370	\$3,150	\$3,420	\$3,720	\$3,870	\$3,990	\$4,100	\$4,100	\$4,390	\$4,680	\$5,440	\$5,760	\$6,070	\$3,296,380
	TOTAL	\$3,680	\$4,170	\$5,400	\$6,110	\$6,870	\$7,240	\$7,540	\$7,820	\$7,820	\$8,550	\$9,740	\$12,800	\$13,640	\$14,520	\$6,393,730
*Note: A surcharge fee is in effect per Board Resolution No. 2006-486.																
DF	BASIN	\$570	\$650	\$820	\$970	\$1,140	\$1,220	\$1,280	\$1,350	\$1,350	\$1,510	\$1,830	\$2,660	\$2,850	\$3,060	\$165,172
	PIPE	\$1,070	\$1,210	\$1,610	\$1,750	\$1,900	\$1,970	\$2,040	\$2,090	\$2,090	\$2,240	\$2,390	\$2,780	\$2,940	\$3,100	\$283,883
	TOTAL	\$1,640	\$1,860	\$2,430	\$2,720	\$3,040	\$3,190	\$3,320	\$3,440	\$3,440	\$3,750	\$4,220	\$5,440	\$5,790	\$6,160	\$449,055
DG	BASIN	\$720	\$830	\$1,040	\$1,240	\$1,450	\$1,550	\$1,630	\$1,710	\$1,710	\$1,910	\$2,320	\$3,380	\$3,620	\$3,880	\$447,419
	PIPE	\$1,260	\$1,430	\$1,900	\$2,060	\$2,240	\$2,320	\$2,400	\$2,460	\$2,460	\$2,640	\$2,820	\$3,270	\$3,460	\$3,650	\$720,114
	TOTAL	\$1,980	\$2,260	\$2,940	\$3,300	\$3,690	\$3,870	\$4,030	\$4,170	\$4,170	\$4,550	\$5,140	\$6,650	\$7,080	\$7,530	\$1,167,533
DH	BASIN	\$860	\$980	\$1,230	\$1,470	\$1,720	\$1,840	\$1,930	\$2,030	\$2,030	\$2,270	\$2,760	\$4,010	\$4,290	\$4,600	\$1,590,510
	PIPE	\$960	\$1,080	\$1,440	\$1,560	\$1,690	\$1,760	\$1,820	\$1,870	\$1,870	\$2,000	\$2,130	\$2,480	\$2,620	\$2,770	\$1,109,580
	TOTAL	\$1,820	\$2,060	\$2,670	\$3,030	\$3,410	\$3,600	\$3,750	\$3,900	\$3,900	\$4,270	\$4,890	\$6,490	\$6,910	\$7,370	\$2,700,090
DI	BASIN	\$460	\$520	\$650	\$780	\$920	\$980	\$1,030	\$1,080	\$1,080	\$1,210	\$1,470	\$2,140	\$2,290	\$2,450	\$219,705
	PIPE	\$750	\$850	\$1,120	\$1,220	\$1,330	\$1,380	\$1,420	\$1,460	\$1,460	\$1,570	\$1,670	\$1,940	\$2,050	\$2,170	\$326,191
	TOTAL	\$1,210	\$1,370	\$1,770	\$2,000	\$2,250	\$2,360	\$2,450	\$2,540	\$2,540	\$2,780	\$3,140	\$4,080	\$4,340	\$4,620	\$545,896
DK	BASIN	\$210	\$240	\$300	\$350	\$410	\$440	\$460	\$490	\$490	\$550	\$660	\$960	\$1,030	\$1,110	\$955,890
	PIPE	\$1,790	\$2,020	\$2,680	\$2,910	\$3,160	\$3,290	\$3,400	\$3,490	\$3,490	\$3,740	\$3,990	\$4,630	\$4,900	\$5,170	\$6,946,640
	TOTAL	\$2,000	\$2,260	\$2,980	\$3,260	\$3,570	\$3,730	\$3,860	\$3,980	\$3,980	\$4,290	\$4,650	\$5,590	\$5,930	\$6,280	\$7,902,530
DL	BASIN	\$2,750	\$3,130	\$3,930	\$4,690	\$5,490	\$5,880	\$6,180	\$6,480	\$6,480	\$7,250	\$8,810	\$12,820	\$13,730	\$14,720	\$3,199,720
	PIPE	\$4,760	\$5,380	\$7,140	\$7,760	\$8,420	\$8,760	\$9,040	\$9,280	\$9,280	\$9,950	\$10,610	\$12,320	\$13,040	\$13,750	\$3,896,570
	TOTAL	\$7,510	\$8,510	\$11,070	\$12,450	\$13,910	\$14,640	\$15,220	\$15,760	\$15,760	\$17,200	\$19,420	\$25,140	\$26,770	\$28,470	\$7,096,290
DM	BASIN	\$2,070	\$2,360	\$2,960	\$3,530	\$4,130	\$4,420	\$4,650	\$4,880	\$4,880	\$5,460	\$6,640	\$9,650	\$10,340	\$11,080	\$5,060,300
	PIPE	\$6,730	\$7,610	\$10,100	\$10,980	\$11,920	\$12,390	\$12,800	\$13,130	\$13,130	\$14,080	\$15,020	\$17,440	\$18,450	\$19,460	\$13,593,740
	TOTAL	\$8,800	\$9,970	\$13,060	\$14,510	\$16,050	\$16,810	\$17,450	\$17,450	\$18,010	\$18,010	\$19,540	\$21,660	\$27,090	\$28,790	\$30,540
DN	BASIN	\$2,940	\$3,350	\$4,200	\$5,020	\$5,880	\$6,290	\$6,610	\$6,930	\$6,930	\$7,760	\$9,430	\$13,720	\$14,690	\$15,750	\$6,387,150
	PIPE	\$3,910	\$4,420	\$5,870	\$6,380	\$6,930	\$7,200	\$7,440	\$7,630	\$7,630	\$8,180	\$8,730	\$10,140	\$10,730	\$11,310	\$7,248,180
	TOTAL	\$6,850	\$7,770	\$10,070	\$11,400	\$12,810	\$13,490	\$14,050	\$14,050	\$14,560	\$14,560	\$15,940	\$18,160	\$23,860	\$25,420	\$27,060
*Note: A surcharge fee is in effect per Board Resolution Nos. 2016-840 & 2018-908.																

DRAINAGE FEE SCHEDULE FOR ZONE 1: PLANNED LOCAL DRAINAGE AREAS

Area		AE-5, A-L, O	A1, A2, RR	R-1-E, R-1-EH, R-A	R-1-A, R-1-AH	R-1-B, R-1-C, RE	R-1 40%	R-1 45%	R-1 50%	R-2, M-H	R-3	R-4, T-P	M-1, M-2, M-3, C-R, M-1-P, S-L	C-P, C-M, R-P	C-1, C-2, C-3, C-4, C-5, C-6, C-L, P	Total Cost
DO	BASIN	\$1,990	\$2,260	\$2,840	\$3,400	\$3,970	\$4,250	\$4,470	\$4,690	\$4,690	\$5,240	\$6,380	\$9,280	\$9,930	\$10,650	\$6,058,270
	PIPE	\$2,950	\$3,340	\$4,430	\$4,810	\$5,230	\$5,430	\$5,610	\$5,760	\$5,760	\$6,170	\$6,580	\$7,650	\$8,090	\$8,530	\$6,993,820
	TOTAL	\$4,940	\$5,600	\$7,270	\$8,210	\$9,200	\$9,680	\$10,080	\$10,450	\$10,450	\$11,410	\$12,960	\$16,930	\$18,020	\$19,180	\$13,052,090
*Note: A surcharge fee is in effect per Board Resolution Nos. 2007-522, 2014-806, 2018-887, 2018-908, & 2020-959																
DP	BASIN	\$1,830	\$2,080	\$2,610	\$3,130	\$3,660	\$3,910	\$4,110	\$4,310	\$4,310	\$4,830	\$5,870	\$8,540	\$9,140	\$9,800	\$6,826,920
	PIPE	\$6,300	\$7,120	\$9,450	\$10,260	\$11,150	\$11,590	\$11,960	\$12,280	\$12,280	\$13,160	\$14,040	\$16,310	\$17,250	\$18,200	\$17,510,400
	TOTAL	\$8,130	\$9,200	\$12,060	\$13,390	\$14,810	\$15,500	\$16,070	\$16,590	\$16,590	\$17,990	\$19,910	\$24,850	\$26,390	\$28,000	\$24,337,320
DQ	BASIN	\$6,430	\$7,330	\$9,190	\$10,990	\$12,860	\$13,760	\$14,470	\$15,170	\$15,170	\$16,970	\$20,640	\$30,020	\$32,150	\$34,460	\$5,304,770
	PIPE	\$5,410	\$6,110	\$8,120	\$8,820	\$9,580	\$9,960	\$10,280	\$10,550	\$10,550	\$11,310	\$12,070	\$14,020	\$14,830	\$15,640	\$3,842,840
	TOTAL	\$11,840	\$13,440	\$17,310	\$19,810	\$22,440	\$23,720	\$24,750	\$25,720	\$25,720	\$28,280	\$32,710	\$44,040	\$46,980	\$50,100	\$9,147,610
DS	BASIN	\$2,720	\$3,100	\$3,890	\$4,650	\$5,440	\$5,820	\$6,120	\$6,420	\$6,420	\$7,180	\$8,730	\$12,700	\$13,600	\$14,580	\$11,778,760
	PIPE	\$6,270	\$7,080	\$9,400	\$10,220	\$11,090	\$11,530	\$11,910	\$12,220	\$12,220	\$13,100	\$13,980	\$16,230	\$17,170	\$18,110	\$21,927,070
	TOTAL	\$8,990	\$10,180	\$13,290	\$14,870	\$16,530	\$17,350	\$18,030	\$18,640	\$18,640	\$20,280	\$22,710	\$28,930	\$30,770	\$32,690	\$33,705,830
DV	BASIN	\$760	\$860	\$1,080	\$1,290	\$1,510	\$1,620	\$1,700	\$1,780	\$1,780	\$2,000	\$2,430	\$3,530	\$3,780	\$4,050	\$1,568,490
	PIPE	\$6,900	\$7,790	\$10,340	\$11,240	\$12,210	\$12,690	\$13,100	\$13,450	\$13,450	\$14,410	\$15,380	\$17,860	\$18,890	\$19,930	\$8,342,370
	TOTAL	\$7,660	\$8,650	\$11,420	\$12,530	\$13,720	\$14,310	\$14,800	\$15,230	\$15,230	\$16,410	\$17,810	\$21,390	\$22,670	\$23,980	\$9,910,860
EF	BASIN	\$1,640	\$1,870	\$2,350	\$2,810	\$3,290	\$3,520	\$3,700	\$3,880	\$3,880	\$4,340	\$5,280	\$7,670	\$8,220	\$8,810	\$3,310,480
	PIPE	\$890	\$1,010	\$1,340	\$1,460	\$1,580	\$1,650	\$1,700	\$1,740	\$1,740	\$1,870	\$1,990	\$2,320	\$2,450	\$2,590	\$1,418,420
	TOTAL	\$2,530	\$2,880	\$3,690	\$4,270	\$4,870	\$5,170	\$5,400	\$5,620	\$5,620	\$6,210	\$7,270	\$9,990	\$10,670	\$11,400	\$4,728,900
EG	BASIN	\$900	\$1,020	\$1,280	\$1,530	\$1,790	\$1,920	\$2,010	\$2,110	\$2,110	\$2,360	\$2,870	\$4,180	\$4,480	\$4,800	\$2,119,330
	PIPE	\$1,800	\$2,040	\$2,700	\$2,940	\$3,190	\$3,320	\$3,420	\$3,510	\$3,510	\$3,770	\$4,020	\$4,670	\$4,940	\$5,210	\$3,187,930
	TOTAL	\$2,700	\$3,060	\$3,980	\$4,470	\$4,980	\$5,240	\$5,430	\$5,620	\$5,620	\$6,130	\$6,890	\$8,850	\$9,420	\$10,010	\$5,307,260
EH	BASIN	\$1,370	\$1,570	\$1,960	\$2,350	\$2,750	\$2,940	\$3,090	\$3,240	\$3,240	\$3,630	\$4,410	\$6,420	\$6,870	\$7,370	\$4,248,510
	PIPE	\$2,610	\$2,950	\$3,920	\$4,260	\$4,630	\$4,810	\$4,970	\$5,100	\$5,100	\$5,460	\$5,830	\$6,770	\$7,160	\$7,560	\$5,121,320
	TOTAL	\$3,980	\$4,520	\$5,880	\$6,610	\$7,380	\$7,750	\$8,060	\$8,340	\$8,340	\$9,090	\$10,240	\$13,190	\$14,030	\$14,930	\$9,369,830
EI	BASIN	\$3,370	\$3,850	\$4,820	\$5,770	\$6,750	\$7,220	\$7,590	\$7,960	\$7,960	\$8,910	\$10,830	\$15,760	\$16,870	\$18,080	\$2,809,810
	PIPE	\$3,480	\$3,940	\$5,230	\$5,680	\$6,170	\$6,410	\$6,620	\$6,790	\$6,790	\$7,280	\$7,770	\$9,020	\$9,550	\$10,070	\$1,725,530
	TOTAL	\$6,850	\$7,790	\$10,050	\$11,450	\$12,920	\$13,630	\$14,210	\$14,750	\$14,750	\$16,190	\$18,600	\$24,780	\$26,420	\$28,150	\$4,535,340
EJ	BASIN	\$4,120	\$4,700	\$5,900	\$7,050	\$8,250	\$8,830	\$9,280	\$9,730	\$9,730	\$10,890	\$13,240	\$19,260	\$20,620	\$22,110	\$4,200,810
	PIPE	\$4,950	\$5,590	\$7,430	\$8,070	\$8,760	\$9,110	\$9,410	\$9,650	\$9,650	\$10,350	\$11,040	\$12,820	\$13,560	\$14,310	\$4,354,250
	TOTAL	\$9,070	\$10,290	\$13,330	\$15,120	\$17,010	\$17,940	\$18,690	\$19,380	\$19,380	\$21,240	\$24,280	\$32,080	\$34,180	\$36,420	\$8,555,060
EK	BASIN	\$390	\$450	\$560	\$670	\$780	\$840	\$880	\$920	\$920	\$1,030	\$1,260	\$1,830	\$1,950	\$2,100	\$655,050
	PIPE	\$1,880	\$2,130	\$2,830	\$3,070	\$3,340	\$3,470	\$3,580	\$3,670	\$3,670	\$3,940	\$4,200	\$4,880	\$5,160	\$5,450	\$2,569,900
	TOTAL	\$2,270	\$2,580	\$3,390	\$3,740	\$4,120	\$4,310	\$4,460	\$4,590	\$4,590	\$4,970	\$5,460	\$6,710	\$7,110	\$7,550	\$3,224,950
EL	BASIN	\$2,130	\$2,430	\$3,040	\$3,640	\$4,260	\$4,550	\$4,790	\$5,020	\$5,020	\$5,620	\$6,830	\$9,940	\$10,640	\$11,410	\$1,026,890
	PIPE	\$1,470	\$1,660	\$2,210	\$2,400	\$2,610	\$2,710	\$2,800	\$2,870	\$2,870	\$3,080	\$3,280	\$3,810	\$4,030	\$4,250	\$393,890
	TOTAL	\$3,600	\$4,090	\$5,250	\$6,040	\$6,870	\$7,260	\$7,590	\$7,890	\$7,890	\$8,700	\$10,110	\$13,750	\$14,670	\$15,660	\$1,420,780
EM	BASIN	\$1,970	\$2,250	\$2,820	\$3,370	\$3,940	\$4,220	\$4,430	\$4,650	\$4,650	\$5,200	\$6,330	\$9,200	\$9,850	\$10,560	\$2,557,150
	PIPE	\$3,120	\$3,520	\$4,680	\$5,080	\$5,520	\$5,740	\$5,930	\$6,080	\$6,080	\$6,520	\$6,960	\$8,080	\$8,550	\$9,010	\$3,124,830
	TOTAL	\$5,090	\$5,770	\$7,500	\$8,450	\$9,460	\$9,960	\$10,360	\$10,730	\$10,730	\$11,720	\$13,290	\$17,280	\$18,400	\$19,570	\$5,681,980

DRAINAGE FEE SCHEDULE FOR ZONE 1: PLANNED LOCAL DRAINAGE AREAS

Area		AE-5, A-L, O	A1, A2, RR	R-1-E, R-1-EH, R-A	R-1-A, R-1-AH	R-1-B, R-1-C, RE	R-1 40%	R-1 45%	R-1 50%	R-2, M-H	R-3	R-4, T-P	M-1, M-2, M-3, C-R, M-1-P, S-L	C-P, C-M, R-P	C-1, C-2, C-3, C-4, C-5, C-6, C-L, P	Total Cost
EN	BASIN	\$1,590	\$1,810	\$2,270	\$2,710	\$3,170	\$3,400	\$3,570	\$3,740	\$3,740	\$4,190	\$5,090	\$7,410	\$7,930	\$8,500	\$3,283,070
	PIPE	\$6,040	\$6,830	\$9,060	\$9,850	\$10,690	\$11,110	\$11,480	\$11,780	\$11,780	\$12,620	\$13,470	\$15,640	\$16,550	\$17,460	\$8,318,460
	TOTAL	\$7,630	\$8,640	\$11,330	\$12,560	\$13,860	\$14,510	\$15,050	\$15,520	\$15,520	\$16,810	\$18,560	\$23,050	\$24,480	\$25,960	\$11,601,530
EO	BASIN	\$2,980	\$3,390	\$4,260	\$5,090	\$5,960	\$6,370	\$6,700	\$7,030	\$7,030	\$7,860	\$9,560	\$13,910	\$14,890	\$15,960	\$4,971,020
	PIPE	\$2,850	\$3,220	\$4,280	\$4,650	\$5,050	\$5,250	\$5,420	\$5,560	\$5,560	\$5,960	\$6,360	\$7,390	\$7,820	\$8,250	\$3,966,870
	TOTAL	\$5,830	\$6,610	\$8,540	\$9,740	\$11,010	\$11,620	\$12,120	\$12,590	\$12,590	\$13,820	\$15,920	\$21,300	\$22,710	\$24,210	\$8,937,890
NN	BASIN	\$1,610	\$1,830	\$2,300	\$2,750	\$3,210	\$3,440	\$3,610	\$3,790	\$3,790	\$4,240	\$5,160	\$7,500	\$8,030	\$8,610	\$4,033,230
	PIPE	\$3,670	\$4,150	\$5,510	\$5,990	\$6,500	\$6,760	\$6,980	\$7,160	\$7,160	\$7,680	\$8,190	\$9,510	\$10,060	\$10,610	\$7,155,400
	TOTAL	\$5,280	\$5,980	\$7,810	\$8,740	\$9,710	\$10,200	\$10,590	\$10,950	\$10,950	\$11,920	\$13,350	\$17,010	\$18,090	\$19,220	\$11,188,630
1G	BASIN	\$1,330	\$1,330	\$1,670	\$1,990	\$2,330	\$2,500	\$2,620	\$2,750	\$2,750	\$3,080	\$3,740	\$5,450	\$5,830	\$6,250	\$1,660,870
	PIPE	\$1,380	\$1,380	\$1,830	\$1,980	\$2,150	\$2,240	\$2,310	\$2,370	\$2,370	\$2,540	\$2,710	\$3,150	\$3,330	\$3,520	\$1,541,159
	TOTAL	\$2,710	\$2,710	\$3,500	\$3,970	\$4,480	\$4,740	\$4,930	\$5,120	\$5,120	\$5,620	\$6,450	\$8,600	\$9,160	\$9,770	\$3,202,029
3G	BASIN	\$2,130	\$2,430	\$3,050	\$3,650	\$4,270	\$4,560	\$4,800	\$5,030	\$5,030	\$5,630	\$6,850	\$9,960	\$10,670	\$11,430	\$4,649,160
	PIPE	\$2,260	\$2,560	\$3,390	\$3,690	\$4,010	\$4,160	\$4,300	\$4,410	\$4,410	\$4,730	\$5,050	\$5,860	\$6,200	\$6,540	\$4,154,740
	TOTAL	\$4,390	\$4,990	\$6,440	\$7,340	\$8,280	\$8,720	\$9,100	\$9,440	\$9,440	\$10,360	\$11,900	\$15,820	\$16,870	\$17,970	\$8,803,900
7C	BASIN	\$1,950	\$2,230	\$2,790	\$3,340	\$3,910	\$4,180	\$4,400	\$4,610	\$4,610	\$5,160	\$6,270	\$9,120	\$9,770	\$10,470	\$3,835,680
	PIPE	\$1,230	\$1,390	\$1,840	\$2,000	\$2,170	\$2,260	\$2,330	\$2,390	\$2,390	\$2,570	\$2,740	\$3,180	\$3,360	\$3,550	\$1,731,900
	TOTAL	\$3,180	\$3,620	\$4,630	\$5,340	\$6,080	\$6,440	\$6,730	\$7,000	\$7,000	\$7,730	\$9,010	\$12,300	\$13,130	\$14,020	\$5,567,580
7D	BASIN	\$2,140	\$2,440	\$3,060	\$3,660	\$4,290	\$4,590	\$4,820	\$5,060	\$5,060	\$5,660	\$6,880	\$10,010	\$10,710	\$11,480	\$3,756,650
	PIPE	\$1,830	\$2,060	\$2,740	\$2,980	\$3,230	\$3,360	\$3,470	\$3,560	\$3,560	\$3,820	\$4,070	\$4,730	\$5,010	\$5,280	\$2,216,710
	TOTAL	\$3,970	\$4,500	\$5,800	\$6,640	\$7,520	\$7,950	\$8,290	\$8,620	\$8,620	\$9,480	\$10,950	\$14,740	\$15,720	\$16,760	\$5,973,360
*Note: A surcharge fee is in effect per Board Resolution Nos. 2005-480 & 2018-908.																
7H	BASIN	\$2,290	\$2,610	\$3,280	\$3,920	\$4,580	\$4,900	\$5,150	\$5,410	\$5,410	\$6,050	\$7,350	\$10,700	\$11,450	\$12,280	\$5,192,980
	PIPE	\$4,590	\$5,180	\$6,880	\$7,480	\$8,120	\$8,440	\$8,710	\$8,940	\$8,940	\$9,590	\$10,230	\$11,880	\$12,570	\$13,250	\$7,363,960
	TOTAL	\$6,880	\$7,790	\$10,160	\$11,400	\$12,700	\$13,340	\$13,860	\$14,350	\$14,350	\$15,640	\$17,580	\$22,580	\$24,020	\$25,530	\$12,556,940
*Note: A surcharge fee is in effect per Board Resolution Nos. 2005-480 & 2018-908.																

DRAINAGE FEE SCHEDULE FOR ZONE 2: PLANNED LOCAL DRAINAGE AREAS

Area	AE-5, A-L, O	A1, A2, RR	R-1-E, R-1-EH, R-A	R-1-A, R-1-AH	R-1-B, R-1-C, RE	R-1 40%	R-1 45%	R-1 50%	R-2, M-H	R-3	R-4, T-P	M-1, M-2, M-3, C-R, M-1-P, S-L	C-P, C-M, R-P	C-1, C-2, C-3, C-4, C-5, C-6, C-L, P	Total Cost
Zone 2															
BASIN	\$750	\$850	\$1,070	\$1,280	\$1,490	\$1,600	\$1,680	\$1,760	\$1,760	\$1,970	\$2,390	\$3,480	\$3,730	\$4,000	\$83,994,458
PIPE	\$1,610	\$1,820	\$2,420	\$2,630	\$2,850	\$2,970	\$3,060	\$3,140	\$3,140	\$3,370	\$3,590	\$4,180	\$4,420	\$4,660	\$127,397,730
TOTAL	\$2,360	\$2,670	\$3,490	\$3,910	\$4,340	\$4,570	\$4,740	\$4,900	\$4,900	\$5,340	\$5,980	\$7,660	\$8,150	\$8,660	\$211,392,188

Planned Local Drianage Areas: Zone 2

Area	Basin Cost	Pipe Cost	Total	Area	Basin Cost	Pipe Cost	Total	Area	Basin Cost	Pipe Cost	Total
A	\$2,299,010	\$1,716,030	\$4,015,040	X	\$1,839,287	\$448,581	\$2,287,868	OO	\$2,241,180	\$790,011	\$3,031,191
B	\$1,050,726	\$142,170	\$1,192,896	Y	\$1,175,737	\$2,265,162	\$3,440,899	PP	\$1,827,799	\$1,220,346	\$3,048,145
C	\$479,953	\$317,414	\$797,367	Z	\$1,121,879	\$2,525,668	\$3,647,547 **	RR	\$5,178,163	\$18,328,132	\$23,506,295
D	\$801,395	\$694,153	\$1,495,548	AA	\$978,116	\$1,343,241	\$2,321,357	SS	\$2,525,088	\$3,296,790	\$5,821,878
E	\$777,422	\$228,063	\$1,005,485	BB	\$499,109	\$822,774	\$1,321,883	TT	\$1,959,614	\$1,599,471	\$3,559,085
F	\$284,535	\$302,016	\$586,551	CC	\$465,921	\$2,085,168	\$2,551,089	UU1	\$474,282	\$1,155,629	\$1,629,911
G	\$1,153,808	\$157,007	\$1,310,815	CO2	\$904,070	\$1,424,260	\$2,328,330	UU2	\$1,590,601	\$1,686,286	\$3,276,887
H	\$99,858	\$214,682	\$314,540	DD	\$1,896,981	\$7,725,461	\$9,622,442	UU3	\$3,419,421	\$9,617,554	\$13,036,975
I	\$227,828	\$248,025	\$475,853	EE	\$754,118	\$3,358,704	\$4,112,822	VV	\$34,124	\$116,961	\$151,085
J	\$1,682,005	\$435,847	\$2,117,852	FF	\$1,433,799	\$9,604,610	\$11,038,409	WW	\$18,653	\$360,044	\$378,697
K	\$1,040,301	\$677,207	\$1,717,508	GG	\$2,485,389	\$1,539,639	\$4,025,028	XX	\$1,025,092	\$2,174,474	\$3,199,566
L	\$662,320	\$494,850	\$1,157,170	HH	\$4,200,015	\$5,506,475	\$9,706,490	ZZ	\$2,565,696	\$2,869,195	\$5,434,891
M	\$967,464	\$257,885	\$1,225,349	II1	\$4,819,438	\$16,627,228	\$21,446,666				
N	\$482,052	\$434,159	\$916,211	II2	\$7,945,847	\$1,306,882	\$9,252,729				
O	\$1,046,970	\$190,138	\$1,237,108	II3	\$1,745,301	\$1,672,599	\$3,417,900				
P	\$884,478	\$277,552	\$1,162,030	II4	\$2,259,789	\$1,113,110	\$3,372,899				
T	\$1,731,054	\$2,463,036	\$4,194,090	JJ	\$2,039,095	\$3,846,098	\$5,885,193				
U	\$1,454,875	\$672,938	\$2,127,813	KK	\$1,999,167	\$1,486,803	\$3,485,970				
V	\$660,035	\$1,726,395	\$2,386,430	LL	\$2,283,613	\$3,412,009	\$5,695,622				
W	\$1,934,684	\$3,474,333	\$5,409,017 *	MM	\$567,301	\$944,465	\$1,511,766				

W * Note: A surcharge fee is in effect per Board Resolution No. 885-BPBR.
 Z ** Note: A surcharge fee is in effect per Board Resolution Nos. 1227, 1265, 1268, 1386.

DRAINAGE FEE SCHEDULE FOR ZONE 3: PLANNED LOCAL DRAINAGE AREAS

Area	AE-5, A-L, O	A1, A2, RR	R-1-E, R-1-EH, R-A	R-1-A, R-1-AH	R-1-B, R-1-C, RE	R-1 40%	R-1 45%	R-1 50%	R-2, M-H	R-3	R-4, T-P	M-1, M-2, M-3, C-R, M-1-P, S-L	C-P, C-M, R-P	C-1, C-2, C-3, C-4, C-5, C-6, C-L, P	Total Cost
Zone 3															
BASIN	\$1,410	\$1,600	\$2,010	\$2,410	\$2,820	\$3,010	\$3,170	\$3,320	\$3,320	\$3,720	\$4,520	\$6,570	\$7,040	\$7,550	\$25,987,808
PIPE	\$1,520	\$1,720	\$2,280	\$2,480	\$2,690	\$2,800	\$2,890	\$2,970	\$2,970	\$3,180	\$3,400	\$3,940	\$4,170	\$4,400	\$20,111,594
TOTAL	\$2,930	\$3,320	\$4,290	\$4,890	\$5,510	\$5,810	\$6,060	\$6,290	\$6,290	\$6,900	\$7,920	\$10,510	\$11,210	\$11,950	\$46,099,402

Planned Local Drianage Areas: Zone 3

Area	Basin Cost	Pipe Cost	Total
Q	\$393,027	\$411,805	\$804,832
S	\$1,310,299	\$2,270,780	\$3,581,079
1E	\$2,104,757	\$933,226	\$3,037,983
2D	\$831,893	\$1,423,085	\$2,254,978
3A	\$1,332,641	\$913,853	\$2,246,494
3D	\$1,427,625	\$1,032,196	\$2,459,821
3F	\$1,105,476	\$1,224,524	\$2,330,000
4B	\$1,549,023	\$988,399	\$2,537,422
4C	\$1,144,187	\$2,383,951	\$3,528,138
4D	\$3,623,973	\$1,032,287	\$4,656,260
4E	\$3,631,939	\$2,148,572	\$5,780,511
5B/5C	\$4,484,990	\$2,231,625	\$6,716,615
5F	\$1,589,077	\$1,530,399	\$3,119,476
6D	\$1,458,901	\$1,586,892	\$3,045,793

DRAINAGE FEE SCHEDULE FOR SURCHARGE AREAS: PLANNED LOCAL DRAINAGE AREAS

Area	AE-5, A-L, O	A1, A2, RR	R-1-E, R-1-EH, R-A	R-1-A, R-1-AH	R-1-B, R-1-C, RE	R-1 40%	R-1 45%	R-1 50%	R-2, M-H	R-3	R-4, T-P	M-1, M-2, M-3, C-R, M-1-P, S-L	C-P, C-M, R-P	C-1, C-2, C-3, C-4, C-5, C-6, C-L, P	
W	TOTAL	-	-	-	-	-	-	-	-	-	-	\$11,075	-	-	
	*Note: Surcharge Resolution: 885-BPBR														
Z	TOTAL	-	-	-	-	-	-	-	\$1,970	\$2,110	\$2,250	\$2,615	\$5,380	\$2,915	
	*Note: Surcharge Resolution: 1386														
BX	TOTAL	-	\$270	\$360	\$390	\$430	\$445	\$445	\$445	\$470	\$510	\$540	\$630	\$660	\$700
	*Note: Surcharge Resolution: 2008-590														
BX	TOTAL	-	-	-	-	-	-	-	-	-	-	-	\$14,310	-	
	*Note: Surcharge Resolution: 2017-884														
CM	TOTAL	\$90	\$105	\$135	\$145	\$160	\$165	\$165	\$165	\$175	\$185	\$200	\$235	\$485	\$260
	*Note: Surcharge Resolution: 1228														
CN	TOTAL	-	-	-	-	-	-	-	\$2,200	\$2,395	\$2,695	\$3,465	\$3,690	\$3,925	
	*Note: Surcharge Resolution: 1422														
DE	TOTAL	-	-	-	-	-	\$790	\$790	\$790	\$840	\$900	-	\$1,120	\$1,250	\$1,250
	*Note: Surcharge Resolution: 2006-486														
DN	TOTAL	-	-	-	-	-	\$11,270	\$11,640	\$11,940	\$11,940	-	-	-	-	\$17,700
	*Note: Surcharge Resolution: 2017-884														
DO	TOTAL	-	-	-	-	-	-	\$4,350	\$4,350	\$4,660	\$4,660	-	\$6,110	\$6,440	
	*Note: Surcharge Resolution: 2018-887														
DO	TOTAL	-	-	-	-	-	-	-	-	\$4,140	\$4,140	-	-	\$5,720	
	*Note: Surcharge Resolution: 2020-959														
7D	TOTAL	-	-	-	-	-	-	-	-	-	-	-	\$5,555	-	
	*Note: Surcharge Resolution: 2005-480														
7H	TOTAL	-	-	-	-	-	-	-	-	-	-	-	\$5,555	-	
	*Note: Surcharge Resolution: 2005-480														

EXHIBIT B

Effective Date: 3/1/2022

Fresno County

