

Proof of Service by Mail

(Code of Civil Procedure § 1013a)

I, Hana Cesar, declare as follows:

1. I am over 18 years of age and not a party to the matter connected with this proof of service.
2. I am employed by the County of Fresno in the office of the Clerk of the Board of Supervisors, at 2281 Tulare Street, Room 301, in Fresno, California 93721.
3. On February 7, 2025, I served the attached Notice of Hearing before the Board of Supervisors of the County of Fresno for the Partial Cancellation of Agricultural Land Conservation No. 8116 and 8119 (RLCC Nos. 1055 and 1056).
4. I served the documents by enclosing them in an envelope and placing the envelope for collection and mailing following our ordinary business practices. I am readily familiar with this business's practice for collecting and processing correspondence for mailing. On the same day that correspondence is placed for collection and mailing, it is deposited in the ordinary course of business with the United States Postal Service in a sealed envelope with postage fully prepaid.
5. The envelopes were addressed and mailed to each of the owners at their addresses, as shown on the current Fresno County Assessment Roll and on the property list compiled from said rolls, as set forth on the attached.

I declare under penalty of perjury under the laws of the State of California that the foregoing is true and correct. Executed on this 7th day of February 2025, in Fresno, California.



Deputy, Clerk of the Board

The original proof of service, including the list of persons and their addresses to whom notice was mailed, is maintained by Public Works staff.



County of Fresno

BOARD OF SUPERVISORS

Chairman
Buddy Mendes
District Four

Vice Chairman
Garry Bredefeld
District Two

Brian Pacheco
District One

Luis Chavez
District Three

Nathan Magsig
District Five

Bernice E. Seidel
Clerk

Notice of Public Hearing

Notice of hearing before the Board of Supervisors of the County of Fresno on **PARTIAL CANCELLATION OF AGRICULTURAL LAND CONSERVATION CONTRACT NO. 8116 and 8119 (RLCC NOS. 1055 and 1056)**

Notice is hereby given that the Board of Supervisors of the County of Fresno has set this hearing for **Tuesday, the 25th day of February** at the hour of **9:30 A.M. (or as soon thereafter as possible)**, in the **Board of Supervisors Chambers**, Room 301, Hall of Records, 2281 Tulare St., Fresno, California, as the time and place for holding a public hearing on the following matter:

To remove a 24.24-acre parcel and a 24.14-acre parcel from the Williamson Act Contracts to allow the 48.38-acres to be developed into a residential subdivision following annexation to the City of Kerman.

Please see attached map

For information, contact **Alexander Pretzer**, Department of Public Works and Planning, 2220 Tulare Street, (Corner of Tulare & "M" Streets, Suite B), Fresno, CA 93721, telephone **(559) 600-4205** or email apretzer@fresnocountyca.gov.

The full text of this Public Hearing will be available on the Fresno County website <https://fresnocounty.legistar.com/Calendar.aspx> under the February 25, 2025, meeting at the Meeting Details link by Wednesday, February 19, 2025.

PROGRAM ACCESSIBILITY AND ACCOMMODATIONS: The Americans with Disabilities Act (ADA) Title II covers the programs, services, activities, and facilities owned or operated by state and local governments like the County of Fresno ("County"). Further, the County promotes equality of opportunity and full participation by all persons, including persons with disabilities. Towards this end, the County works to ensure that it provides meaningful access to people with disabilities to every program, service, benefit, and activity, when viewed in its entirety. Similarly, the County also works to ensure that its operated or owned facilities that are open to the public provide meaningful access to people with disabilities.

To help ensure this meaningful access, the County will reasonably modify policies/ procedures and provide auxiliary aids/services to persons with disabilities. If, as an attendee or participant at the meeting, you need additional accommodations such as an American Sign Language (ASL) interpreter, an assistive listening device, large print material, electronic materials, Braille materials, or taped materials, please contact the Policy Planning staff as soon as possible during office hours at **(559) 600-4230** or at ipothast@fresnocountyca.gov. Reasonable requests made at least 48 hours in advance of the meeting will help to ensure accessibility to this meeting. Later requests will be accommodated to the extent reasonably feasible.

NOTES:




- Anyone may testify, please share this notice with your neighbors or anyone you feel may be interested.
- The Board of Supervisors will also accept written testimony such as letters, petitions, and statements. In order to provide adequate review time for the Board of Supervisors, please submit these documents to the Clerk to Board prior to the hearing date.
- If at some later date you challenge the final action on this matter in court, you may be limited to raising only those issues you or someone else raised at the public hearing described in this notice or in written correspondence delivered to the Board of Supervisors at, or prior to, the public hearing.

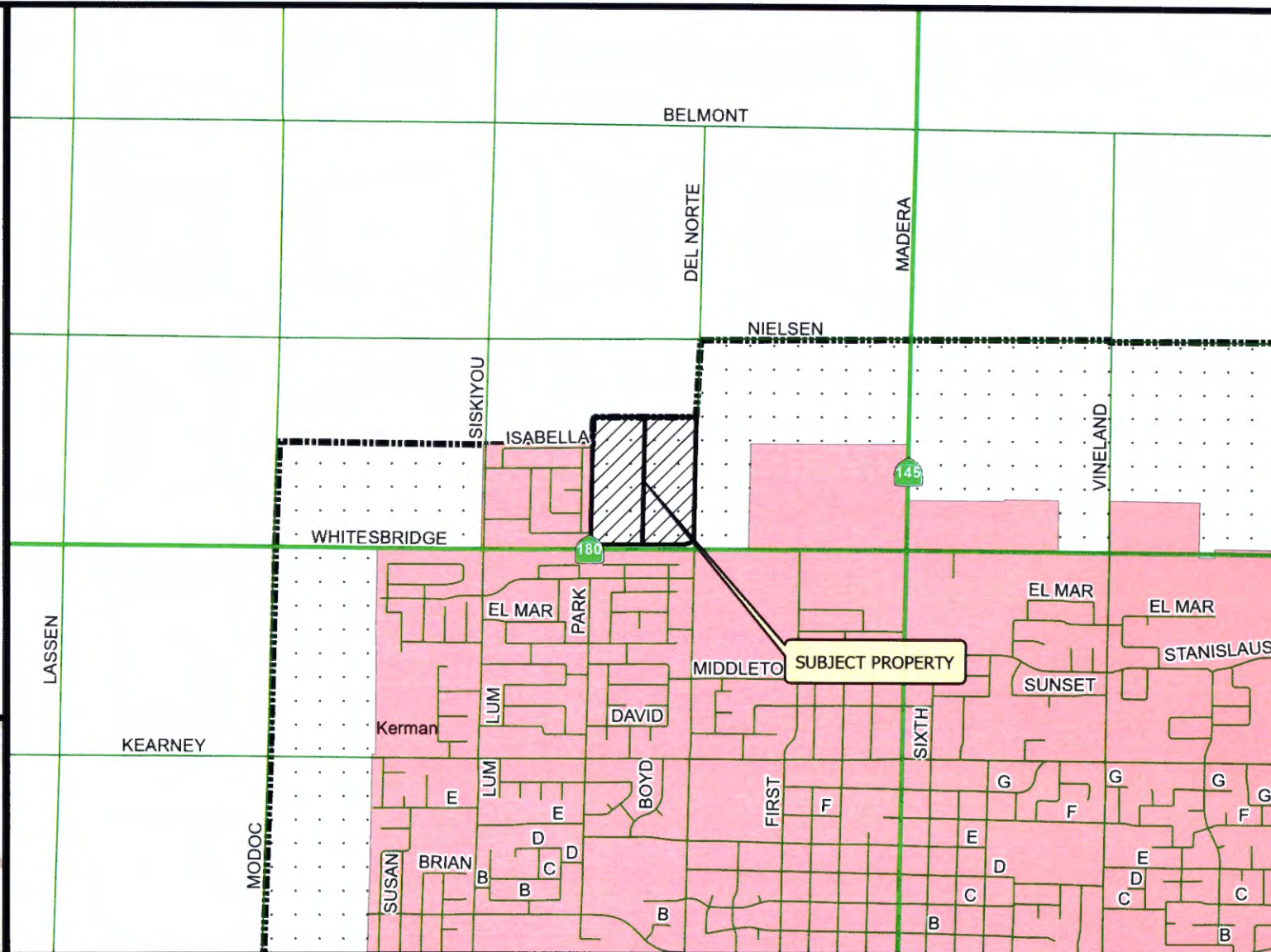
DATED: February 7, 2025

BERNICE E. SEIDEL
Board of Supervisors

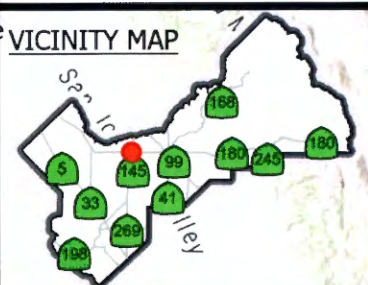
By *Hanam*

Legend

-  Subject Property
-  Kerman
-  City Sphere of Influence



VICINITY MAP



LOCATION MAP

RLCC 1055 AND RLCC 1056

2024

Prepared by : County of Fresno, Department of Public Works and Planning, Development Services Division
 Person Prepared by : chuang
 On Date : 2/29/2024

