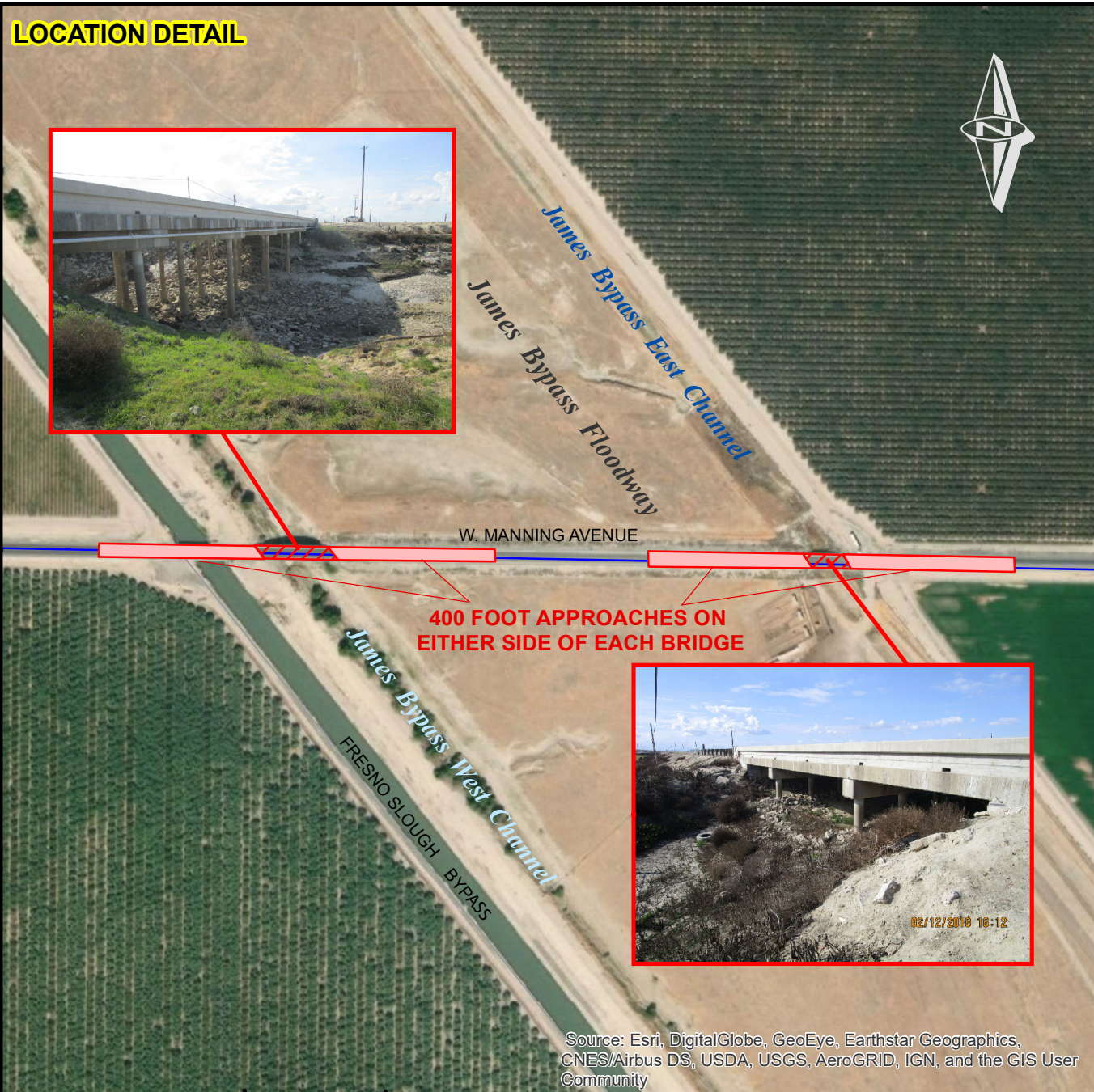


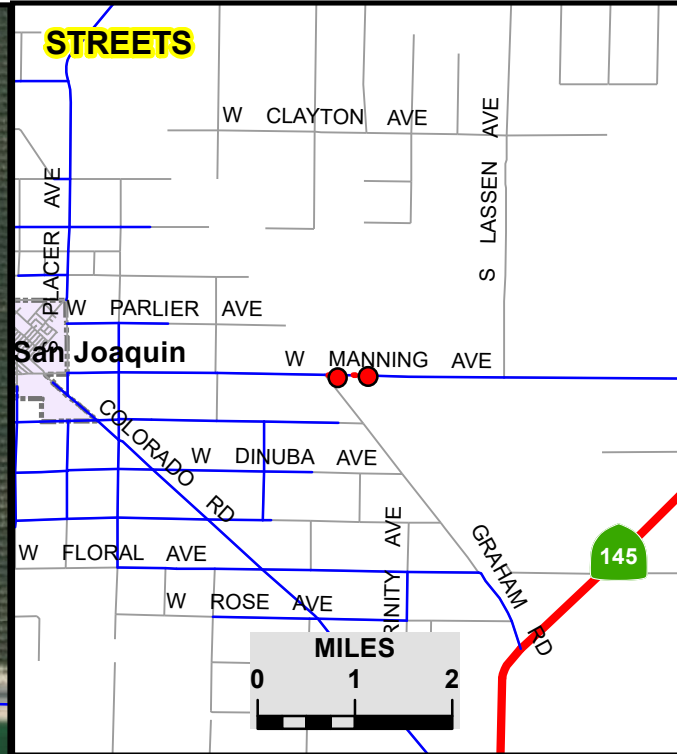
LOCATION DETAIL



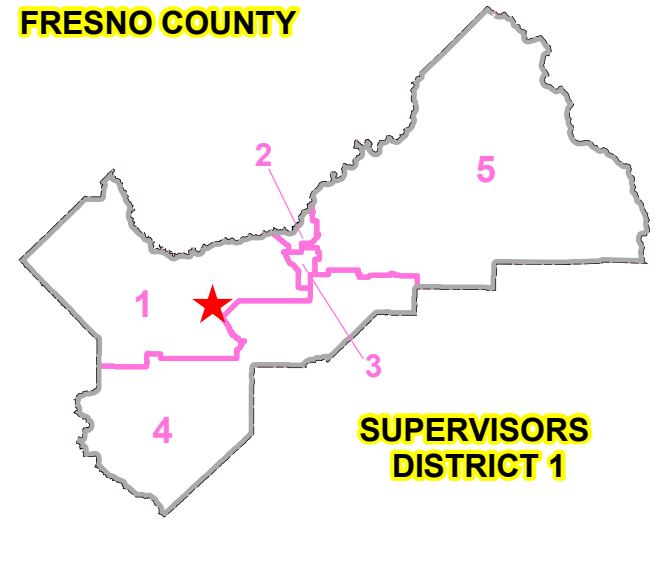
400 FOOT APPROACHES ON EITHER SIDE OF EACH BRIDGE

Source: Esri, DigitalGlobe, GeoEye, Earthstar Geographics, CNES/Airbus DS, USDA, USGS, AeroGRID, IGN, and the GIS User Community

STREETS



FRESNO COUNTY



SUPERVISORS DISTRICT 1

	DATE:	SCALE IN FEET
DESIGNED: D.N.	12/12/2019	
DRAWN: D.N.	12/12/2019	
STATE BRIDGE NOS. 42C0066 & 42C0067		



DEPARTMENT OF PUBLIC WORKS & PLANNING

**HIGHWAY BRIDGE PROGRAM
JAMES BYPASS BRIDGE REPLACEMENTS (2)
ON MANNING AVENUE
BRLO-5942(233)**