

Item #6
6-18-24

Fresno County
Senate Bill 1
Project List
and
Anticipated Force Account
Projects



Department of Public Works and Planning



SB-1 List Development

SB-1 emphasizes the importance of accountability and transparency in the delivery of California's transportation programs.

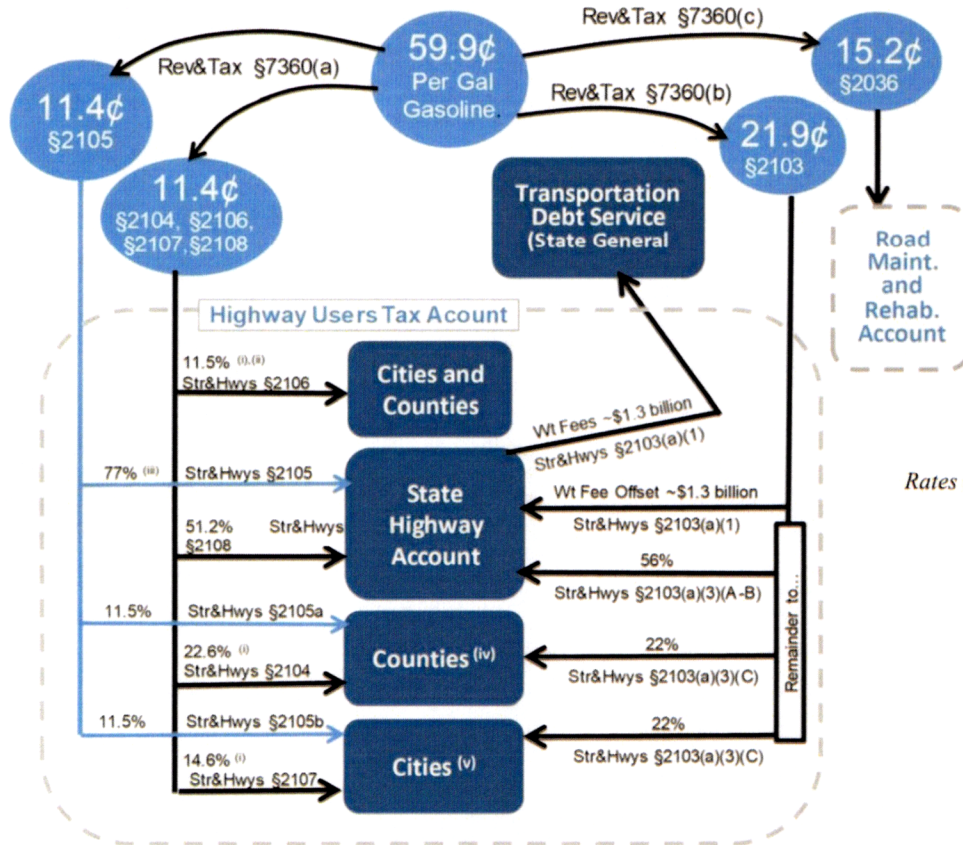
- Projects are identified from:
 - The Department's pavement management system (PMS)
 - Bridge Inspection Reports
 - Public Outreach

How HUTA & RMRA are apportioned

- ❖ Fresno has 3,500 County-maintained road miles, over 5% of the State, and we have 2.5% of the population
- ❖ Annually, we receive about 3% (\$55M) of the total amount apportioned to Counties(\$1.8 B)



Allocation of Gasoline Excise Tax Revenues



Rates effective July 1, 2024

- (i) The 4.39¢ local share of diesel fuel tax is allocated 1.8¢ to counties and 2.59¢ to cities.
- (ii) Str&Hwy Code §2106 funds are distributed based on registered vehicles, assessed property valuation, and population.
- (iii) A portion of funds in State Highway Account is allocated among counties and cities for Regional Transportation Improvement Programs.
- (iv) County apportionments are based on numbers of registered vehicles and county road mileage.
- (v) City apportionments are based on population.

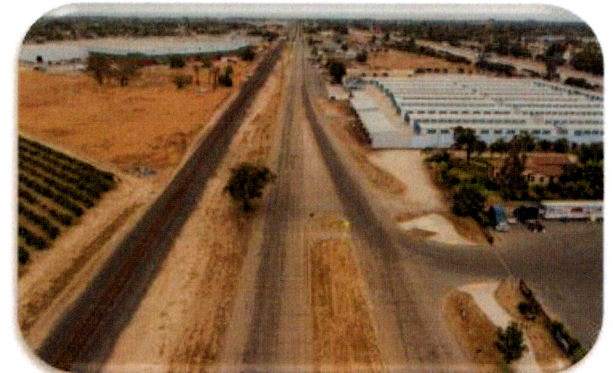
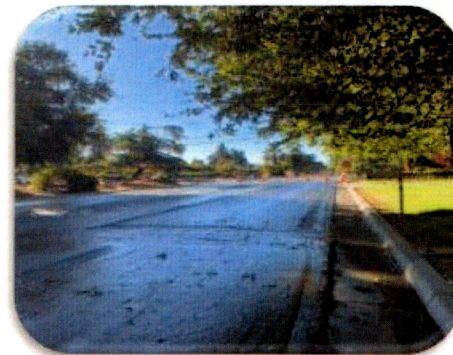
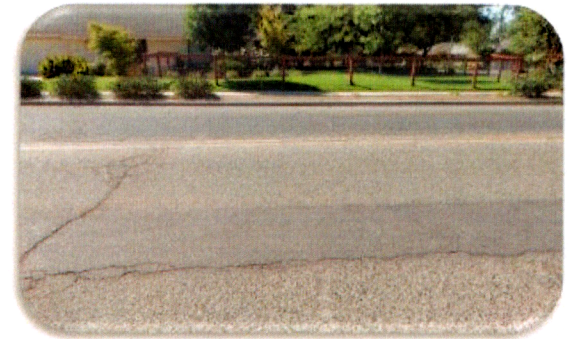
State Gas Taxes

SOURCES AND ALLOCATIONS

How we use SB-1 Funding

❖ Preservation Treatments

- Chip Seals
- Slurry Seals
- Contract Overlays
- Force Account Overlays



Local Match for Federal Projects



Jensen – Fig to West
Reconstruction

Ashlan & Palm Traffic Signal

Dry Creek Bridge on Burrough
Valley Road

Mt. Whitney Complete
Streets

Calwa Complete Streets



Force Account Projects

Public Contract Code Section 22031(g)

- Limits the amount of new construction and reconstruction that can be done by County forces to 30% of the total value of all work performed by force account other than maintenance
- The calculated force account limit is \$9,205,606 for FY 2024-25
- County forces perform overlays of less than 1 inch.

THANK YOU!

QUESTIONS?

