

**GENERAL SITE NOTES**

- ANY SURVEY MONUMENTS WITHIN THE AREA OF CONSTRUCTION SHALL BE PRESERVED OR RESET BY A PERSON LICENSED TO PRACTICE LAND SURVEYING IN THE STATE OF CALIFORNIA.
- TWO WORKING DAYS BEFORE COMMENCING EXCAVATION OPERATIONS WITHIN THE STREET RIGHT-OF-WAY OR UTILITY EASEMENTS, ALL EXISTING UNDERGROUND UTILITIES ALERT (USA) CALL 1-800-642-2444.
- REPAIR ALL DAMAGED AND/OR OFF-GRADE CONCRETE STREET IMPROVEMENTS AS DETERMINED BY THE CONSTRUCTION MANAGEMENT ENGINEER, PRIOR TO OCCUPANCY.
- CONTACT THE PUBLIC WORKS DEPARTMENT, TRAFFIC ENGINEERING AT (559) 621-8800, 10 WORKING DAYS PRIOR TO ANY OFF-SITE CONCRETE CONSTRUCTION.
- UNDERGROUND ALL EXISTING OFF-SITE OVERHEAD UTILITIES WITHIN THE LIMITS OF THIS APPLICATION AS PER FMC SECTION 15-2017.
- PROVIDE A 4' MIN. PATH OF TRAVEL ALONG THE PUBLIC SIDEWALK DIRECTLY IN FRONT OF PROPERTY, TO MEET CURRENT ACCESSIBILITY REGULATIONS. A PEDESTRIAN EASEMENT MAY BE REQUIRED IF REQUIREMENTS ARE NOT MET.
- CONTACT THE PUBLIC WORKS DEPARTMENT AT 559 621-8800, 10 WORKING DAYS PRIOR TO ANY OFFSITE CONCRETE CONSTRUCTION.

**PROJECT DATA**

- PROJECT TITLE: FRESNO COUNTY SHERIFF AREA 2 SUBSTATION
  - SUBSTATION BLDG
  - STORAGE BLDG
- PROJECT ADDRESS: 1129 N ARMSTRONG AVE FRESNO, CA 93721
- APN: 310-133-04, 05, 06T
- LEGAL:
- ZONING: IL/UM/GZ
- SITE AREA: 289,080 SF (6.50 AC)
- SUBSTATION BLDG
  - BLDG AREA: 22,700 SF
  - OCCUPANCY: A-3, B w/ A-2 AND S-1 ACCESSORY
  - CONSTRUCTION: IIB - SPRINKLERED
- STORAGE BLDG
  - BLDG AREA: 35,520 SF
  - OCCUPANCY: S-2
  - CONSTRUCTION: IIB - SPRINKLERED
- SITE COVERAGE: 20.6%
- BUILDING CODE: 2016 CALIFORNIA BUILDING CODE
- SEISMIC DESIGN CATEGORY D
- SPR APPLICATION NO. 8156

**KEYNOTES LEGEND**

- (E1) (E) CONCRETE CURB AND GUTTER. SEE CIVIL DRAWINGS FOR ANY REQUIRED MODIFICATIONS AS PER THE CITY OF FRESNO STANDARD.
- (E2) (E) ACCESSIBLE CURB RAMP. SEE CIVIL DRAWINGS FOR ANY REQUIRED MODIFICATIONS AS PER THE CITY OF FRESNO STANDARD, P-28 AND PER 2016 CALIFORNIA BUILDING CODE, TITLE 24, PART 2, VOLUME 1, CHAPTER 11B (2016 CBC T24 P2 V1 CHPT 11B).
- (E3) (E) CONCRETE SIDEWALK. SEE CIVIL DRAWINGS FOR ANY REQUIRED MODIFICATIONS AS PER THE CITY OF FRESNO STANDARD, P-28 AND PER 2016 CBC T24 P2 V1 CHPT 11B.
- (E4) (E) STREET LIGHT
- (E5) (E) FIRE HYDRANT
- (E6) (E) TREE
- (E7) (E) 6'-0" WIDE x 11'-0" PUBLIC UTILITY EASEMENT (PUE)
- (E8) (E) 6'-0" WIDE x 15'-0" PUBLIC UTILITY EASEMENT (PUE)
- (1) (P) CONCRETE SIDEWALK PER CITY OF FRESNO STANDARD AND PER 2016 CBC T24 P2 V1 CHPT 11B. SEE DETAIL A5/A1.5. SEE ALSO CIVIL DRAWINGS.
- (2) (P) GAP/ISOLATION SHALL NOT EXCEED 4' AT ANY POINT.
- (3) (P) NORTH ENTRY GATE W/ BATTERY BACKUP AND FIRE ACCESS TO WEST YARD. PROVIDE APPROVED POLICE/FIRE BYPASS LOCK ("BEST" PADLOCK MODEL 218100 SERIES OR ELECTRIC CYLINDER SWITCH MODEL W182) AND INSTALL PER FPD POLICY 402.009.
- (4) (P) SOUTH ENTRY GATE W/ BATTERY BACKUP AND FIRE ACCESS TO WEST YARD. SEE KEYNOTE 3 ABOVE FOR POLICE/FIRE BYPASS LOCK REQUIREMENT.
- (5) (P) 12' CLEAR TRIANGLE OF VISIBILITY AT DRIVE APPROACH.
- (6) FUTURE MONUMENT SIGN (NOT IN CONTRACT)
- (7) (P) LIGHTED BOLLARD, TYP. SEE DETAIL XX/XXX.
- (8) (P) FLAG POLE, TYP. SEE DETAIL JB/A1.6.
- (9) (P) ACCESSIBLE PARKING STALL W/ LOADING AREA, RAMP AND SIGN. SEE DETAIL AR/A1.4 SIM.
- (10) (P) STANDARD PARKING STALL, 9'-0" WIDE X 18'-0" LONG. LENGTH MAY INCLUDE 2'-0" MAX OVERHANG.
- (11) (P) RESERVED PARKING STALL FOR SAFE EXCHANGE. STALL MARKING SHALL READ 'PRIVATE PROPERTY AND E-COMMERCE TRANSACTIONS' IN 9" HIGH WHITE LETTERS.
- (12) (P) STUB OUT FOR PASSIVE UHF RFID SENSOR
- (13) (P) 30" "STOP" SIGN PER CITY OF FRESNO AND STATE STANDARD. SIGN SHALL BE MOUNTED ON A 2" GALVANIZED POST AND IMMEDIATELY BEHIND STREET SIDEWALK.
- (14) (P) PERSONNEL GATE IN CUM WALL. SEE DETAIL A11/A1.6 OR E11/A1.6.
- (15) (P) GENERATOR W/ FUEL TANK
- (16) (P) PERSONNEL GATE IN CHAIN LINK FENCE. SEE DETAIL N11/A1.6.
- (17) (P) FIRE HYDRANT (PRIVATE)
- (18) (P) COVERED LARGE VEHICLE PARKING SPACE. SEE DETAIL XX/XXX.
- (19) (P) CANOPY POSTS: STUB CONDUIT AND ELECTRICAL OUTLETS TO EACH POST FOR FUTURE NEEDS. EVERY OTHER POST SHALL HAVE 110 VOLT WEATHER RESISTANT 4-GANG OUTLETS AND HOSE BIBBS. TYPICAL AT ALL SOLAR COVERED PARKING SPACES.
- (20) (P) CONCRETE PAD FOR SEA TRAIN STORAGE CONTAINERS. PRE-PLAN FOR POWER. SEE DETAIL XX/XXX AND ELECTRICAL DRAWINGS.
- (21) (P) SEA TRAIN STORAGE CONTAINER
- (22) (P) FIRE RISER
- (23) (P) HVAC RISER
- (24) (P) ELECTRICAL OUTLETS, TYPICAL. SEE ELECTRICAL DRAWINGS.
- (25) (P) STEEL BOLLARD, TYPICAL. SEE DETAIL NS/A1.5.
- (26) (P) TRASH / RECYCLE ENCLOSURE. SEE DETAIL JB/A1.5.
- (27) (P) BEV-DIVE 35-40 FT BOAT AND TRAILERS
- (28) (P) 7'-0" HIGH CMU WALL, TYPICAL. SEE DETAIL A15/A1.6.
- (29) (P) 6'-0" CHAIN LINK FENCE W/ VISION SLATS. SEE DETAIL N15/A1.6.
- (30) (P) STRIPING TO DELINEATE PARKING SPACE SEPARATION AND CLEARANCE
- (31) (P) 6" HIGH CONCRETE CURB. SEE DETAILS N1 OR J1/A1.6.
- (32) (P) TREE. SEE LANDSCAPE DRAWINGS.
- (33) (P) NEW COMMERCIAL DRIVEWAY APPROACH PER CITY OF FRESNO PUBLIC WORKS STANDARDS P-2 AND P-6. WIDTH AS SHOWN. SEE CIVIL DRAWINGS.
- (34) (P) AG PAVING PER CITY OF FRESNO PUBLIC WORKS STANDARDS P-21, P-22 AND P-23. SEE CIVIL DRAWINGS.
- (35) (P) SHORT-TERM BICYCLE PARKING PER 2016 CGBSC 5.106.4.1.1 AT 5% OF NEW VISITOR MOTORIZED VEHICLE PARKING SPACES. FOR 60 MV SPACES, 3 BIKE SPACES REQUIRED. SEE DETAIL JS/A1.5.
- (36) (P) LONG-TERM BICYCLE PARKING PER 2016 CGBSC 5.106.4.1.2 AT 5% OF NEW EMPLOYEE MOTORIZED VEHICLE PARKING SPACES. FOR 259 MV SPACES, 13 BIKE SPACES REQUIRED. SEE DETAIL ES/A1.5.
- (37) (P) LIGHT POLE W/ CONCRETE BASE, TYP. SEE ELECTRICAL DRAWINGS.
- (38) (P) TRANSFORMER LOCATION. SEE ELECTRICAL DRAWINGS.
- (39) (P) BACKFLOW PREVENTION DEVICE AND METER. SEE CIVIL DRAWINGS.
- (40) (P) DEPRESS CONCRETE CURB TO 2" HIGH AT WIDTH AS SHOWN.
- (41) (P) 8'-0" CHAIN LINK FENCE W/ SECURITY WIRE AND PRIVACY SLATS. SEE DETAIL A1/A1.6.
- (42) (P) CONCRETE WHEEL STOP, TYPICAL. SEE DETAIL A1/A1.5.
- (43) (P) 2" PEA GRAVEL O/ COMPACTED SOIL AT A/C AND GENERATOR YARD UNLESS OTHERWISE NOTED.
- (44) (P) PLANTING AREA. SEE LANDSCAPE DRAWINGS.

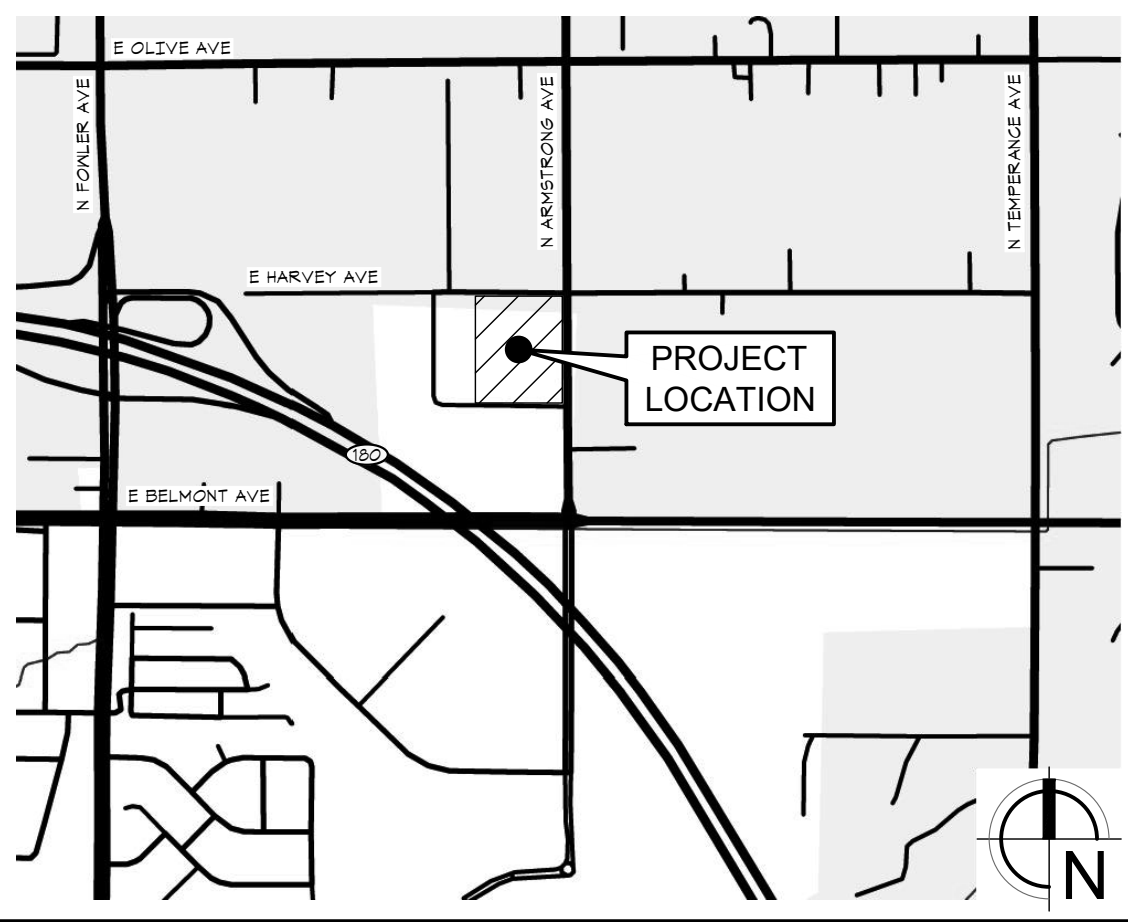
**SHEET NOTES**

- KEYNOTES SITE PLAN ONLY. SEE SHEETS A1.2 AND A1.3 FOR SITE DIMENSIONS.
- SEE SHEET A1.2 FOR EXTERIOR EXIT ROUTES.

**DEMOLITION KEYNOTES LEGEND**

- (D1) REMOVE (E) TREE TO BOTTOM OF ROOT BALL. SHOWN DASHED. SEE ALSO CIVIL DRAWINGS.
- (D2) SEE CIVIL DRAWINGS FOR EXTENT OF DEMOLITION WITHIN THIS AREA.

**VICINITY MAP**

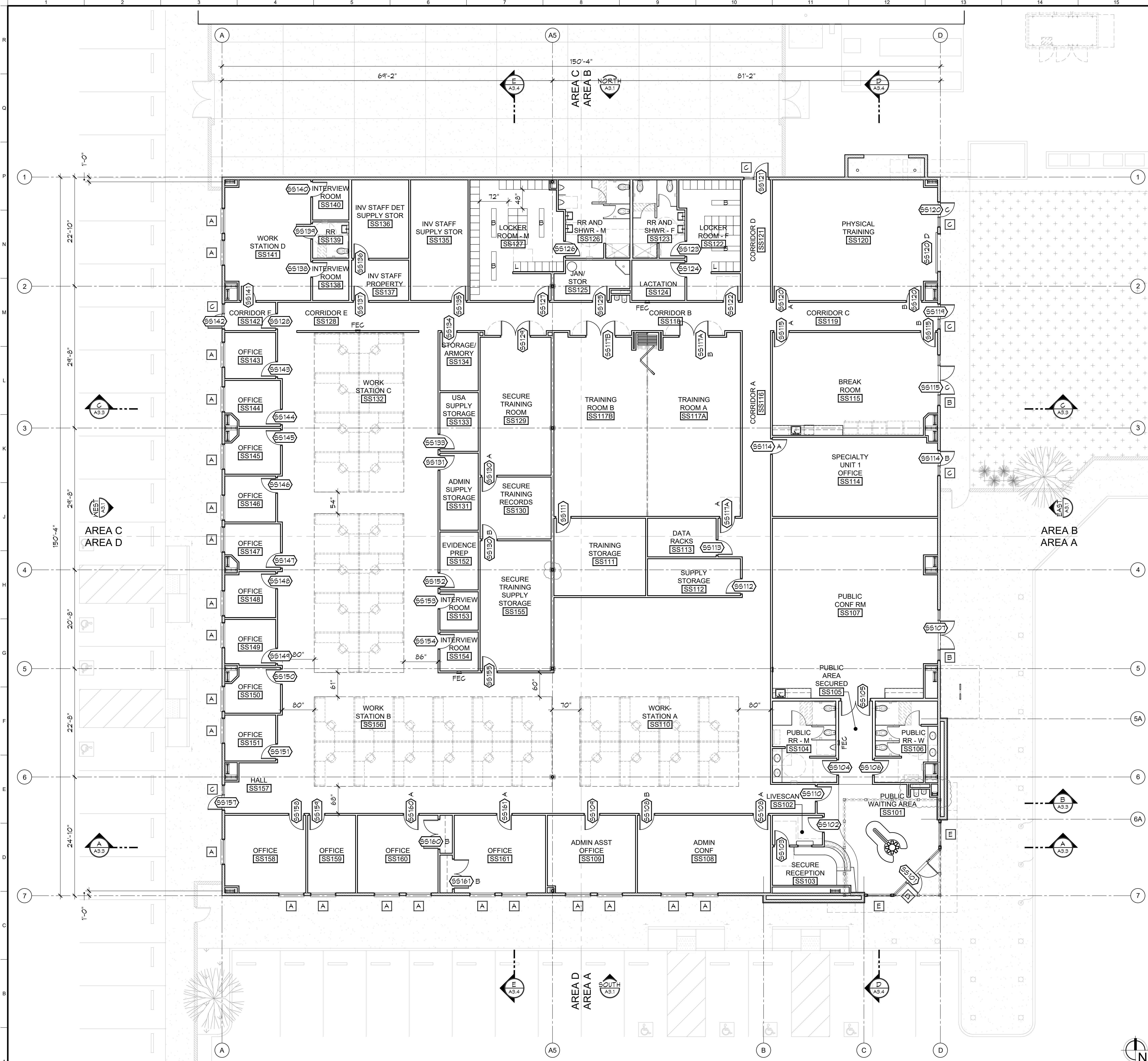


**Sheet Content: SITE PLAN**

Fresno County Department of Public Works and Planning  
Capital Projects  
2220 Tulare Street, 8th Floor  
Fresno, California 93721

Sheet No.  
**A1.1**  
Drawn by: --- Plot date: 02.03.2020

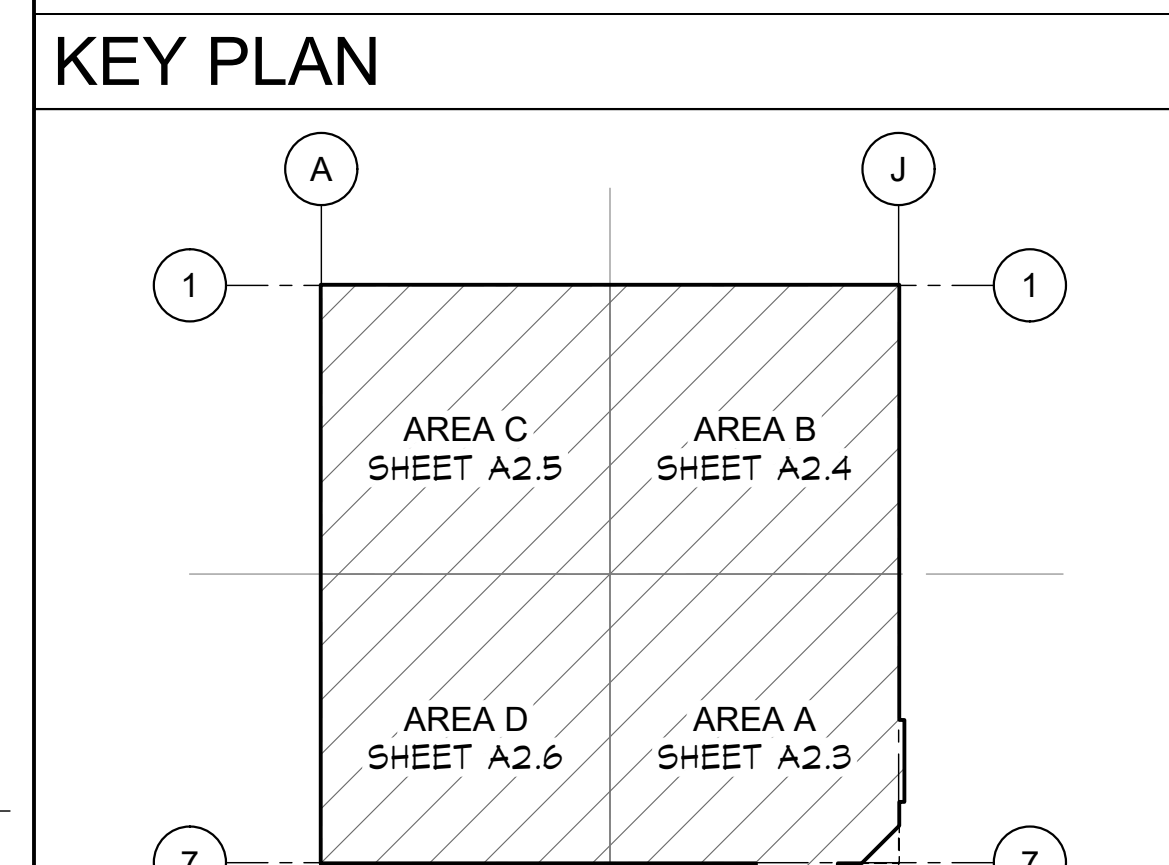




### WALL LEGEND

	EXTERIOR WALL (NR)
	1.1 INTERIOR WALL (NR) - 3 5/8" X 20 GA. METAL STUDS AT 24" O.C. MAX W/ 3-1/2" SOUND BATT INSULATION AND 5/8" GYP BD EA SIDE WHERE EXPOSED. EXTEND 6" MINIMUM ABOVE ADJACENT CEILING AND BRACE TO STRUCTURE.
	1.2 INTERIOR WALL (NR) - SAME AS 1.1 ABOVE EXCEPT USE 6" X 30 GA. METAL STUDS AT 24" O.C.
	2.1 INTERIOR WALL (NR) - 3 5/8" X 20 GA. METAL STUDS AT 24" O.C. MAX W/ 3 1/2" SOUND BATT INSULATION AND 5/8" GYP BD EACH SIDE. EXTEND TO BOTTOM OF STRUCTURE ABOVE.

- ### GENERAL NOTES
- FOR 'SYMBOLS LEGEND', SEE SHEET A0.1.
  - SEE 'ARCHITECTURAL NOTES', SHEET A0.2.
  - SEE 'TYPICAL STUD FRAMING' DETAIL J5/A6.1.



ARCHITECT:  
Neil Roger Davidson, A.I.A., Architect  
California Licensed Architect No. C-27818  
Ren. 10-31-2019  
Fresno County Department of Public Works  
Capital Projects  
2220 Tulare Street, Eighth Floor  
Fresno, California 93721  
Telephone: (559) 600-4477  
Email: nrdavidson@co.fresno.ca.us

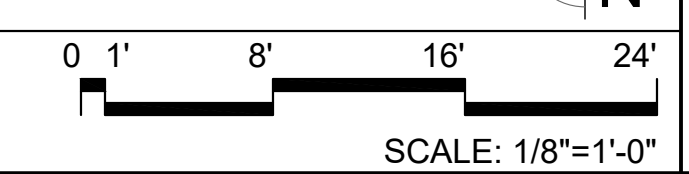
**Project:**  
Sheriff Area 2 Sub-Station  
11220 N. Armstrong Ave., Fresno, CA  
APN: 310-133-04, -05, and -06  
ISSUE DATE: 02.03.2020  
PROJECT NO: 780293 / 19003  
FILE NAME: 19003\_A2-2\_Floor\_Plan

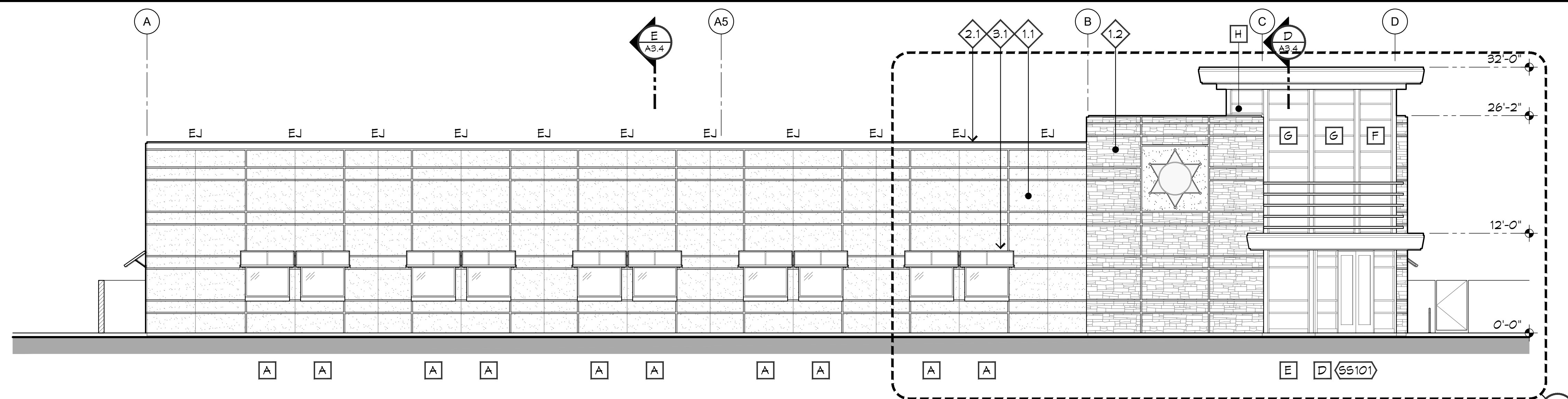
**Sheet Content:**  
FLOOR PLAN - OVERALL

Fresno County Department of Public Works and Planning  
Capital Projects  
2220 Tulare Street, 8th Floor  
Fresno, California 93721

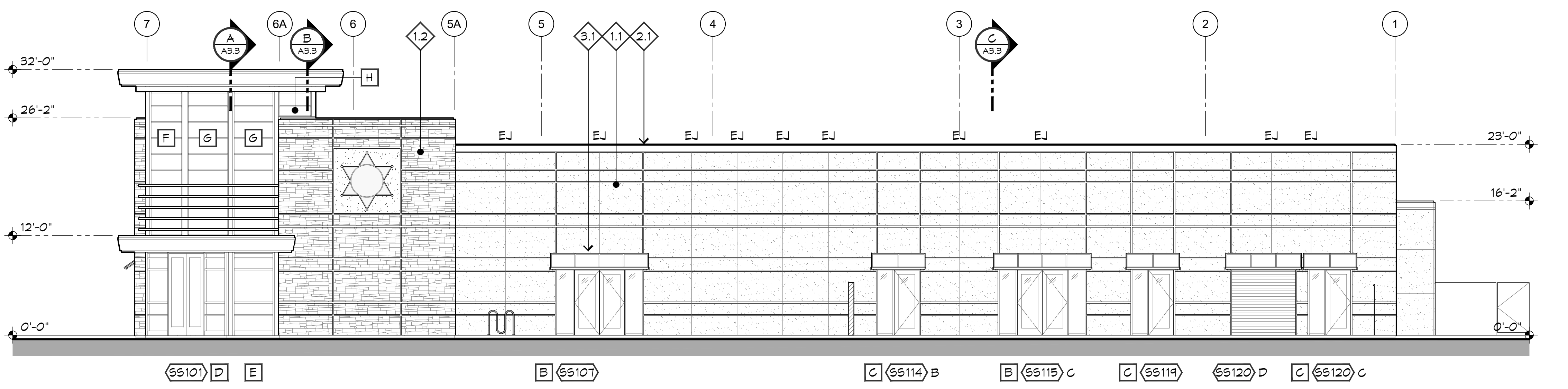
Sheet No.  
**A2.2**

**A1 FLOOR PLAN - OVERALL**  
A2.2

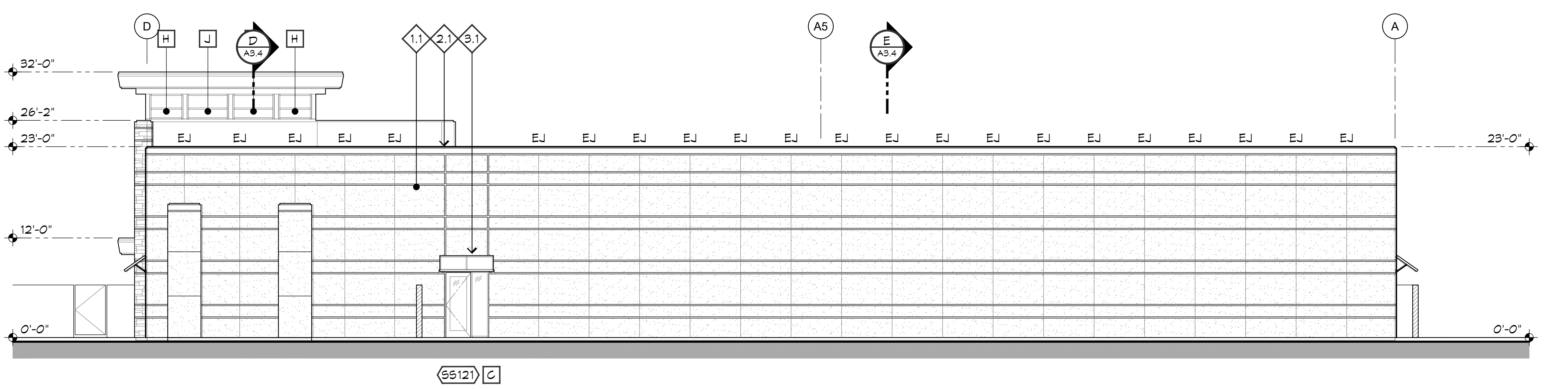




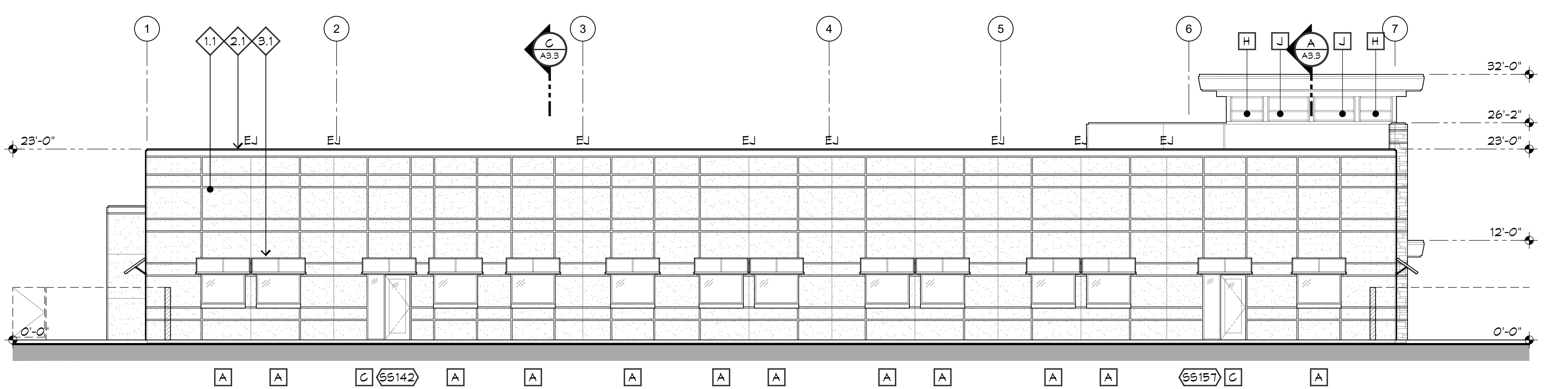
SOUTH



EAST



NORTH



WEST

EXTERIOR FINISH SCHEDULE

MARK	DESCRIPTION
1	STUCCO
1.2	STONE
2.1	TRIM, METAL
3.1	SHADE

KEYNOTES LEGEND

NOTE: SOME KEYNOTES MAY NOT APPEAR ON THIS SHEET.

1 SCRIBE STONE VENEER AROUND METAL FASCIA. 1/2" MAXIMUM JOINT. SEE DETAIL XX/AX.

2 ALL JOINTS IN STUCCO SHALL BE 2" ALUMINUM REVEAL UNLESS NOTED AS 'EJ' (EXPANSION JOINT).

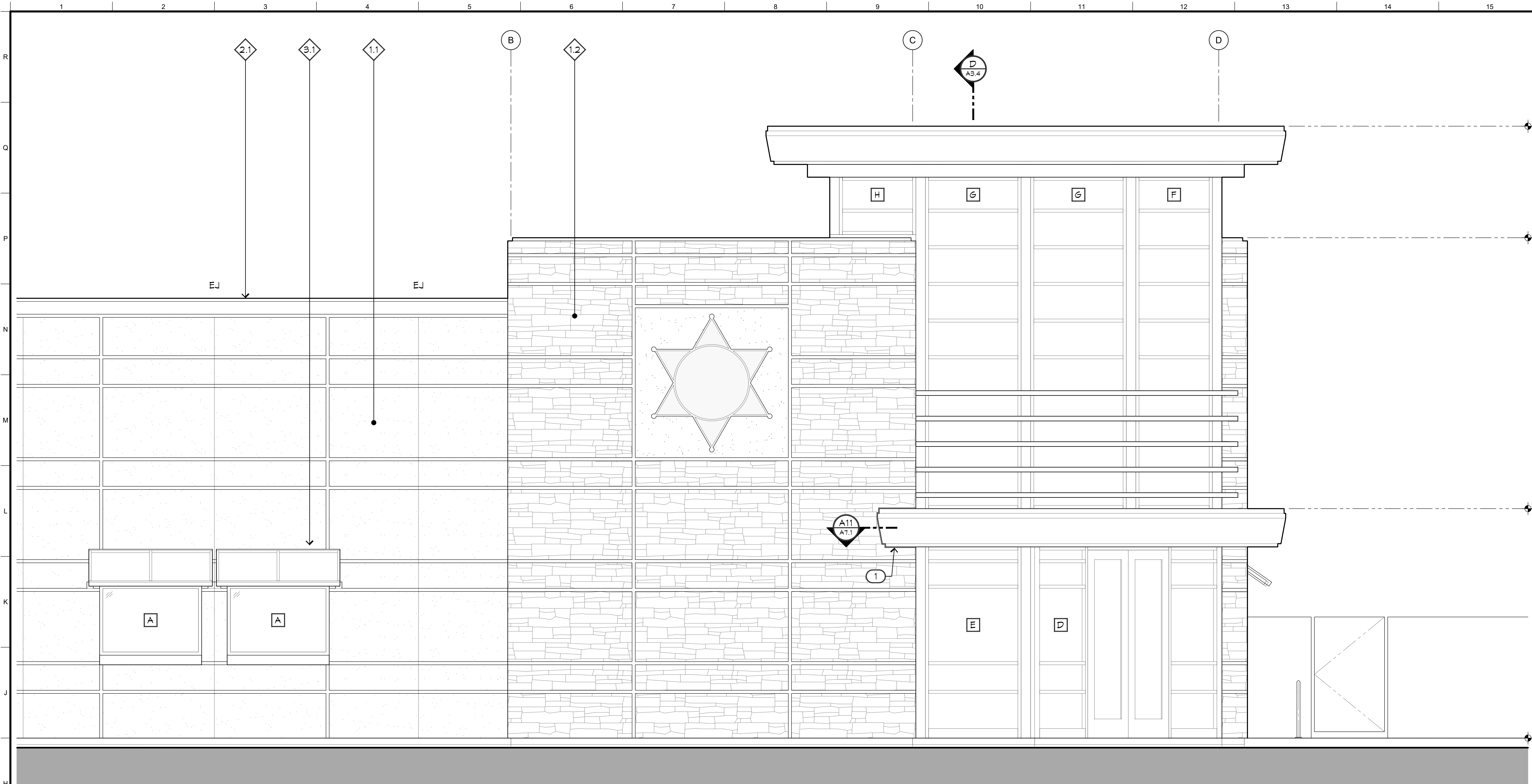


**Project:**  
 Sheriff Area 2 Sub-Station  
 1128 N. Armstrong Ave., Fresno, CA  
 APN: 310-133-04, -05, and -06  
 ISSUE DATE: 02.03.2020  
 PROJECT NO: 19003 / 19003  
 FILE NAME: 19003\_A3-1\_Extr\_Elev

**Sheet Content:**  
 EXTERIOR ELEVATIONS



Sheet No.  
**A3.1**



EXTERIOR FINISH SCHEDULE	
MARK	DESCRIPTION
1	STUCCO
2	STONE
3	TRIM, METAL
3	SHADE

**KEYNOTES LEGEND**  
 NOTE: SOME KEYNOTES MAY NOT APPEAR ON THIS SHEET.  
 1 SCRIBE STONE VENEER AROUND METAL FASCIA. 1/2" MAXIMUM JOINT. SEE DETAIL XX/AXX.  
 2 ALL JOINTS IN STUCCO SHALL BE 2" ALUMINUM REVEAL UNLESS NOTED AS 'EJ' (EXPANSION JOINT).

**F5 ENLARGED EXTERIOR ELEVATION**

55101  
 SCALE: 3/8"=1'-0"



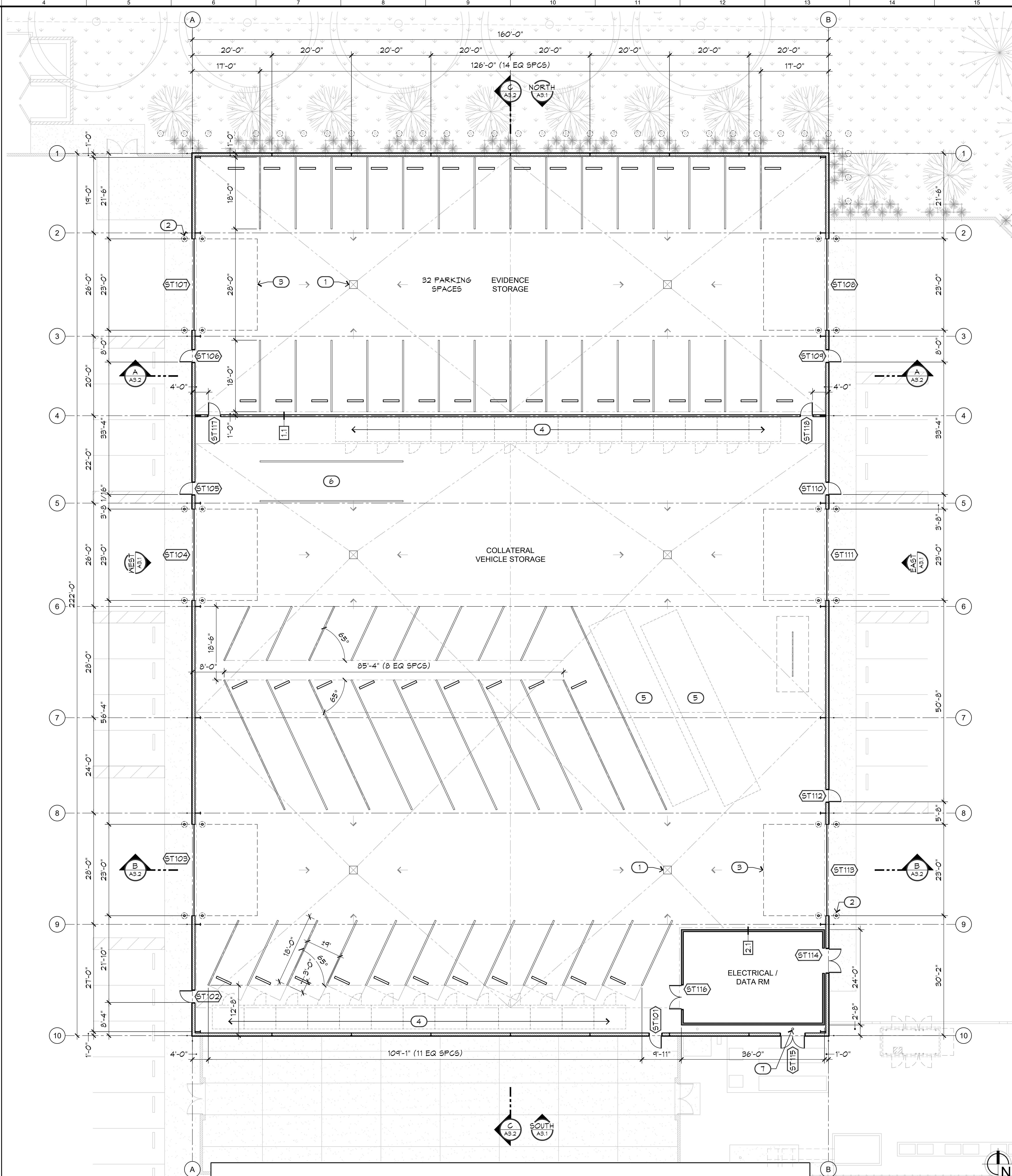
**Project:**  
 Sheriff Area 2 Sub-Station  
 1129 N. Armstrong Ave., Fresno, CA  
 APN: 310-133-04, -05, and -06  
 ISSUE DATE: 02.03.2020  
 PROJECT NO: 19003 / 19003  
 FILE NAME: 19003\_A3-2\_Extr\_Elev

**Sheet Content:**  
 EXTERIOR ELEVATIONS

Fresno County Department of  
 Public Works and Planning  
 Capital Projects  
 2220 Tulare Street, 8th Floor  
 Fresno, California 93721

**Sheet No.**  
**A3.2**





### WALL LEGEND

	EXTERIOR WALL (NR)
	INTERIOR WALL (NR) - 6" x 20 GA. METAL STUDS AT 24" O.C. MAX W/ 3-1/2" SOUND BATT INSULATION AND 5/8" GYP BD EACH SIDE. EXTEND TO BOTTOM OF STRUCTURE ABOVE
	INTERIOR WALL (NR)

### KEYNOTES LEGEND

	FLOOR DRAIN, TYPICAL OF SIX (6). SEE PLUMBING.
	REMOVABLE STEEL BOLLARD AT DOOR JAMB, TYPICAL.
	OUTLINE OF OVERHEAD SECTIONAL DOOR ABOVE, TYPICAL.
	GEAR LOCKER
	OHV 50 FT TRUCK PARKING
	RV COMMAND POST PARKING
	FIRE RISER

**A4 FLOOR PLAN**  
A2.2

ARCHITECT:  
Neil Roger Davidson, A.I.A., Architect  
California Licensed Architect No. C-27818  
Ren. 10-31-2019  
Fresno County Department of Public Works  
Capital Projects  
2220 Tulare Street, Eighth Floor  
Fresno, California 93721  
Telephone: (559) 600-4477  
E-mail: ndavidson@co.fresno.ca.us

**Project:**  
Sheriff Area 2 Sub-Station Storage  
11220 N. Armstrong Ave., Fresno, CA  
APN: 310-133-04, -05, and -06  
ISSUE DATE: 02.03.2020  
PROJECT NO: 19003-01 / 19003-01  
FILE NAME: 19003-01\_A2-2\_Floor\_Plan

**Sheet Content:**  
FLOOR PLAN

Fresno County Department of  
Public Works and Planning  
Capital Projects  
2220 Tulare Street, 8th Floor  
Fresno, California 93721

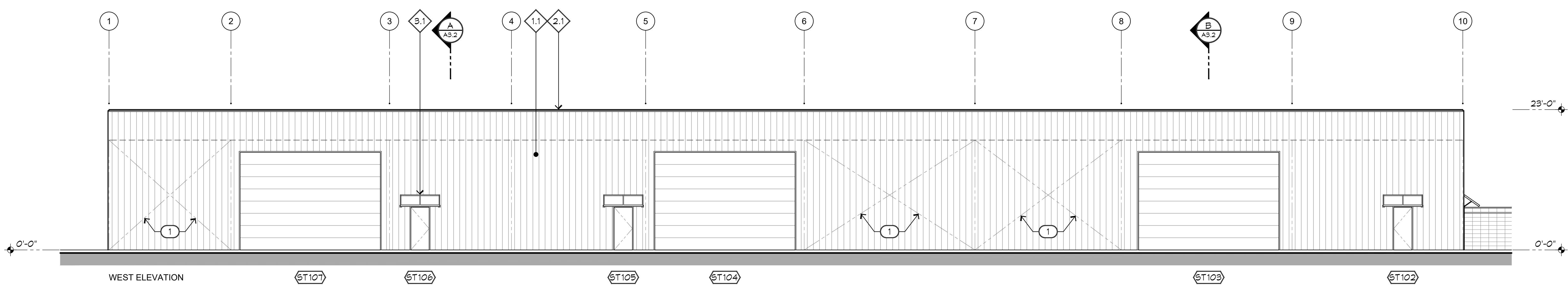
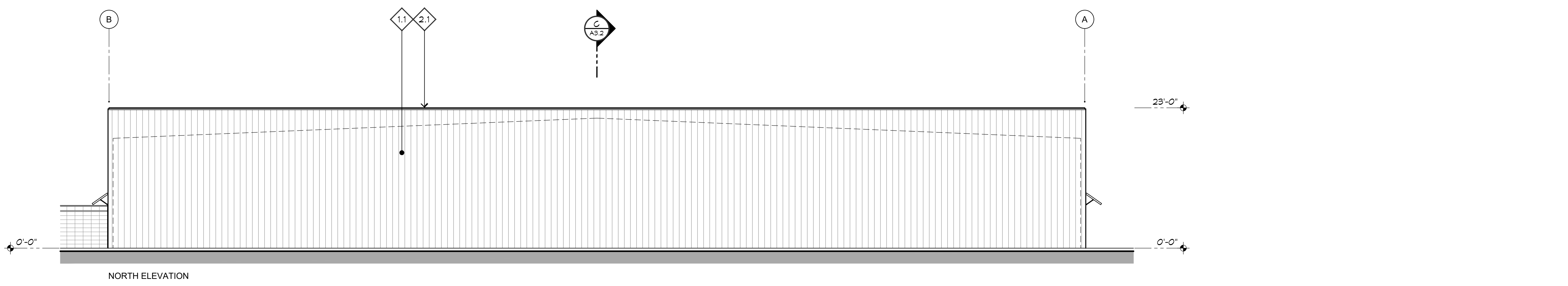
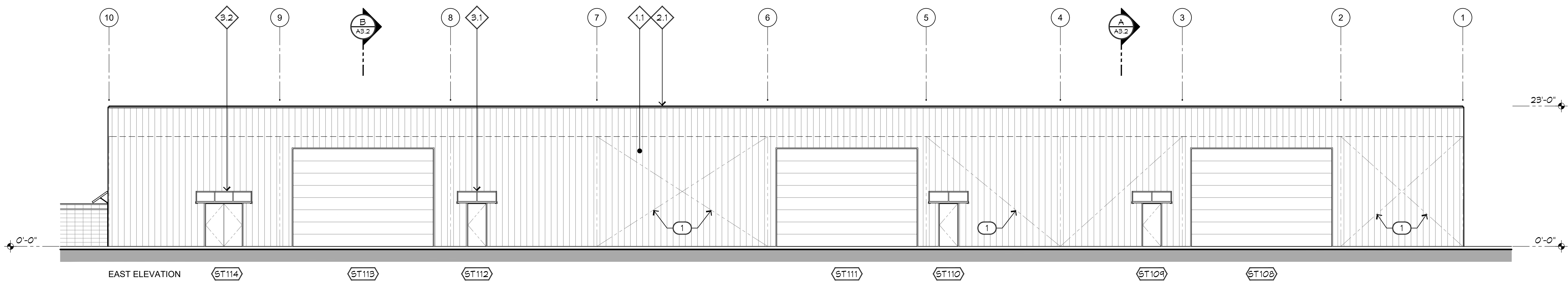
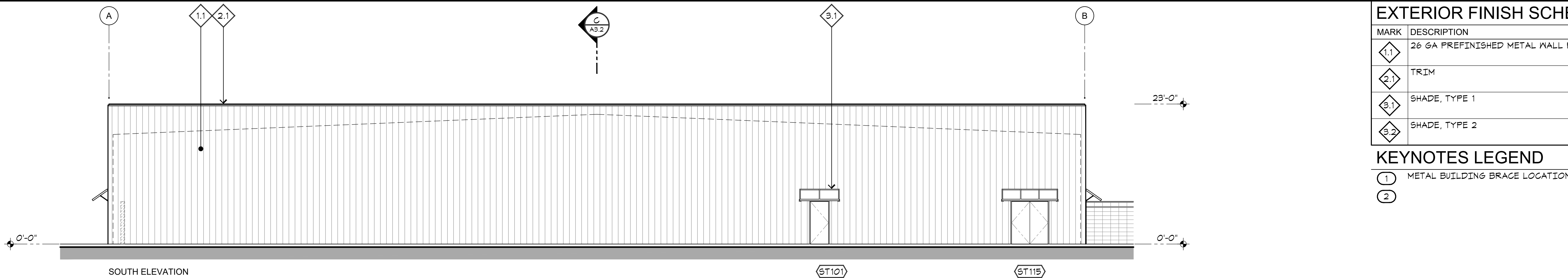
**Sheet No.**  
**A2.2**

**EXTERIOR FINISH SCHEDULE**

MARK	DESCRIPTION
1.1	26 GA PREFINISHED METAL WALL PANEL.
2.1	TRIM
3.1	SHADE, TYPE 1
3.2	SHADE, TYPE 2

**KEYNOTES LEGEND**

- 1 METAL BUILDING BRACE LOCATION
- 2



ARCHITECT:  
Neil Roger Davidson, A.I.A., Architect  
California Licensed Architect No. C-27818  
Ren. 10-31-2019  
Fresno County Department of Public Works  
Capital Projects  
2220 Tulare Street, Eighth Floor  
Fresno, California 93721

C-27818  
REN: 10-31-19

Telephone: (559) 600-4477  
Email: ndavidson@co.fresno.ca.us

**Project:**  
Sheriff Area 2 Sub-Station Storage  
1129 N. Armstrong Ave., Fresno, CA  
APN: 310-133-04, -05, and -06  
ISSUE DATE: 02.03.2020  
PROJECT NO: 780293 / 19003.01  
FILE NAME: 19003-01\_A3-1\_Ext\_Elev

**Sheet Content:**  
EXTERIOR ELEVATION

Fresno County Department of  
Public Works and Planning  
Capital Projects

2220 Tulare Street, 8th Floor  
Fresno, California 93721

Sheet No.

**A3.1**

