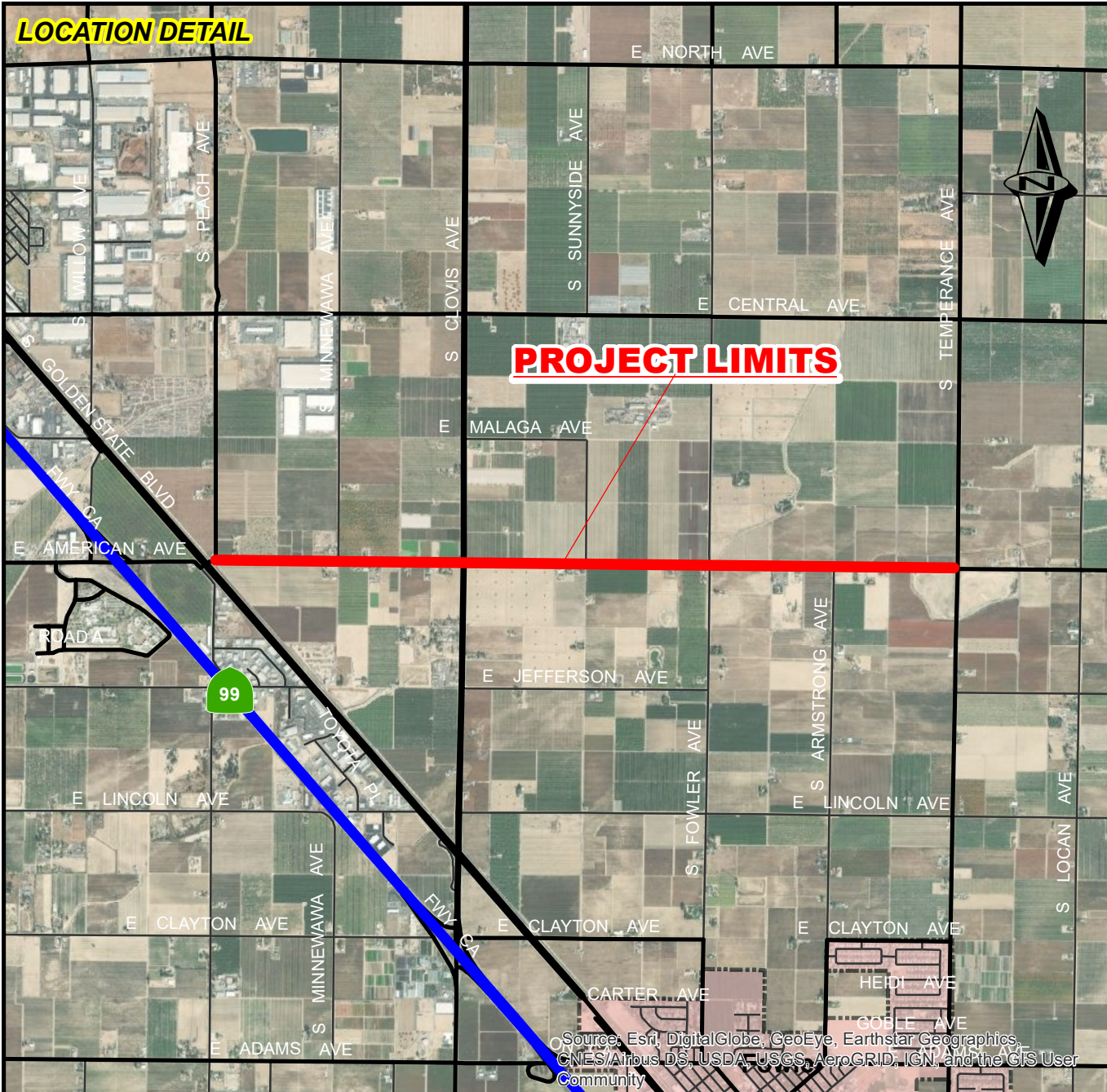
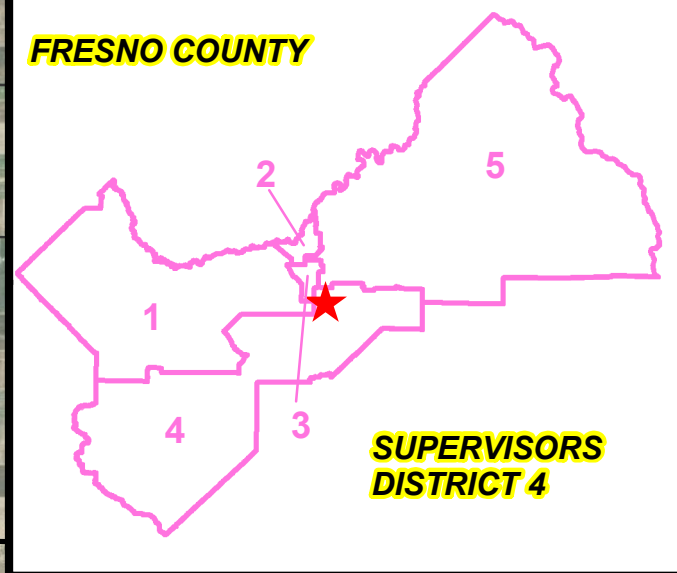


**LOCATION DETAIL**



**PROJECT LIMITS**



**FRESNO COUNTY**

**SUPERVISORS DISTRICT 4**

Source: Esri, DigitalGlobe, GeoEye, Earthstar Geographics, CNES/Airbus DS, USDA, USGS, AeroGRID, IGN, and the GIS User Community

Prepared By: Diana Nuttman, Staff Analyst  
 Date: 08/03/2021  
 Agency: County of Fresno  
 Department: Public Works & Planning  
 Division: Design

**SCALE IN MILES**



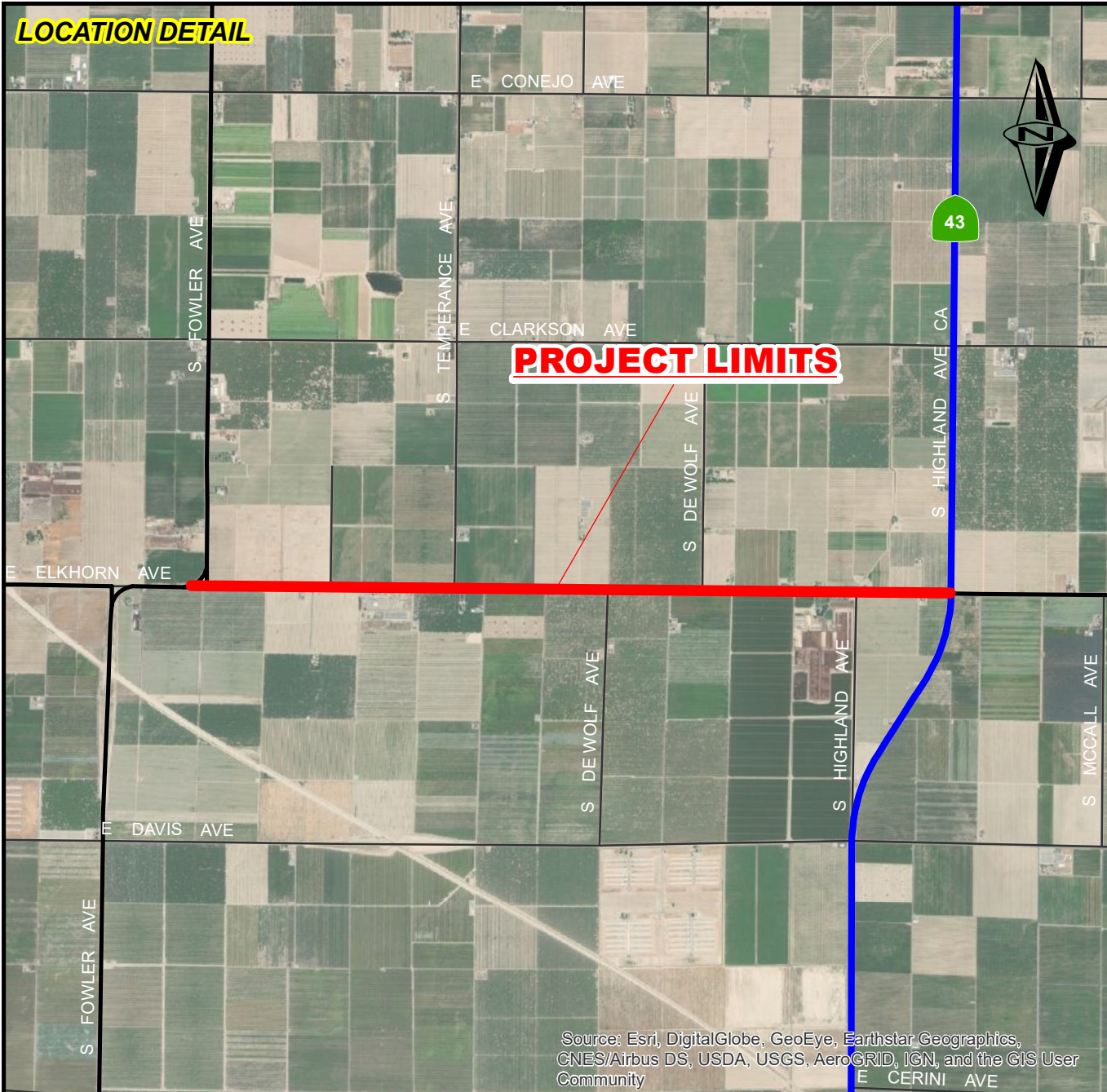
**DEPARTMENT OF PUBLIC WORKS & PLANNING**

**CMAQ CANDIDATE - AMERICAN AVE FROM PEACH AVE TO TEMPERANCE AVE SHOULDER IMPROVEMENTS**

2220 TULARE STREET, 6TH FLOOR, FRESNO, CA 93721  
 Phone: (559) 600-4109 | Fax: (559) 600-4544

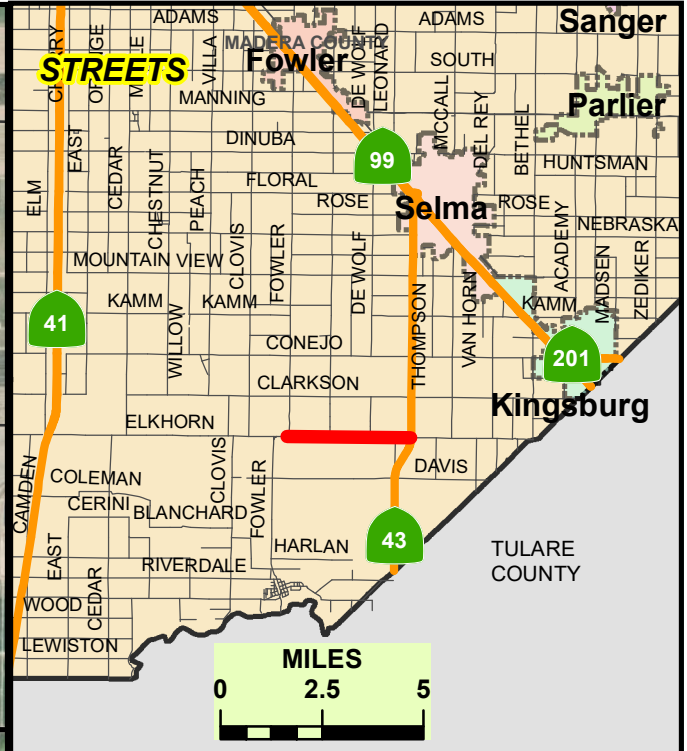


**LOCATION DETAIL**

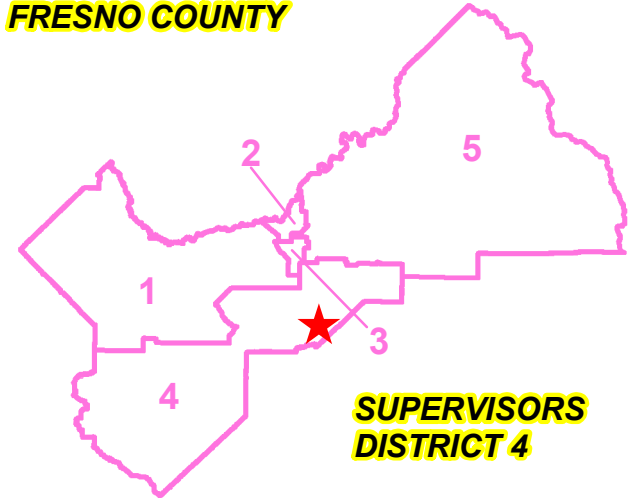


**PROJECT LIMITS**

Source: Esri, DigitalGlobe, GeoEye, Earthstar Geographics, CNES/Airbus DS, USDA, USGS, AeroGRID, IGN, and the GIS User Community



**FRESNO COUNTY**



**SUPERVISORS DISTRICT 4**

Prepared By: Diana Nuttman, Staff Analyst  
 Date: 08/03/2021  
 Agency: County of Fresno  
 Department: Public Works & Planning  
 Division: Design

**SCALE IN MILES**

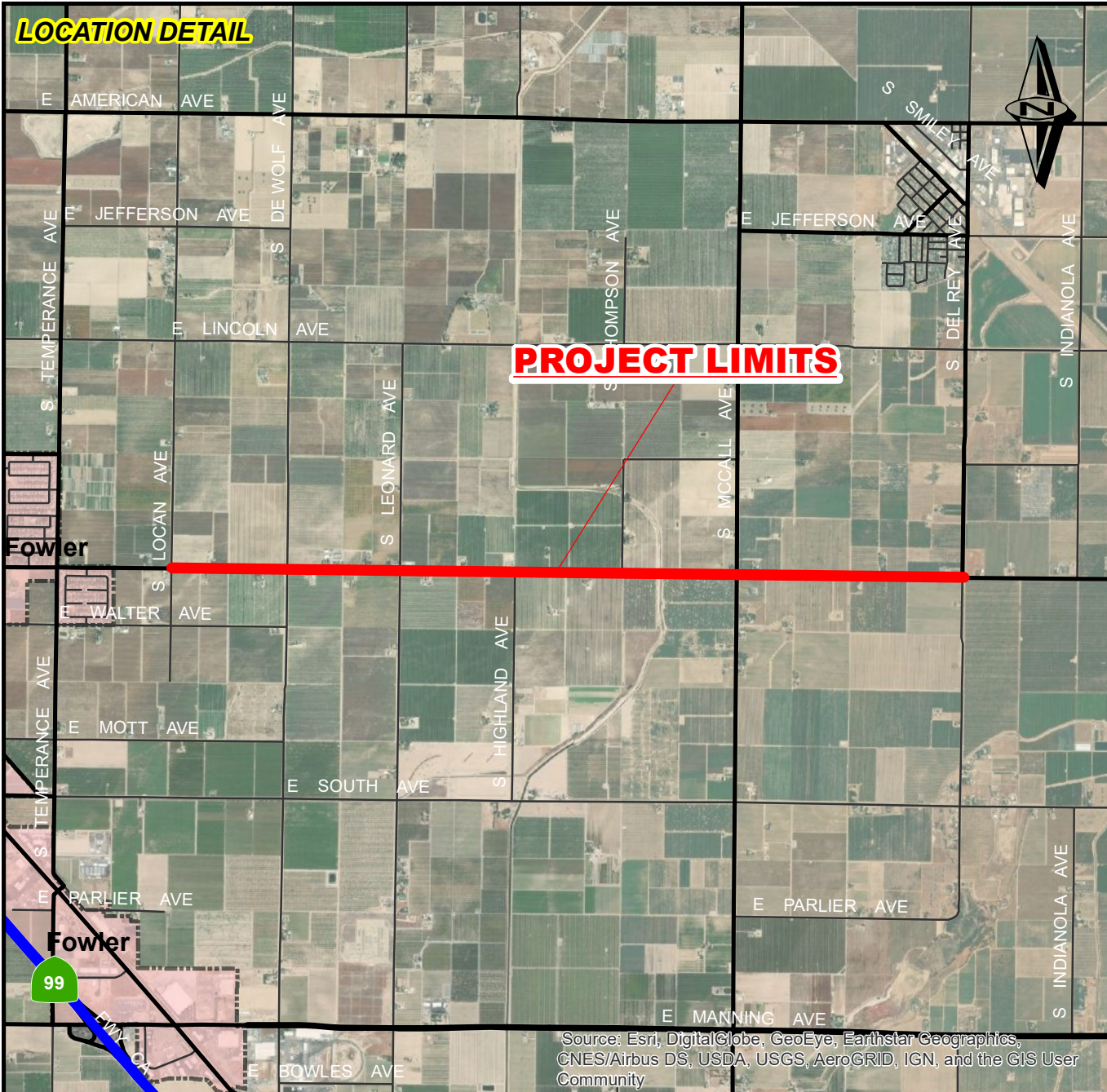


**DEPARTMENT OF PUBLIC WORKS & PLANNING**

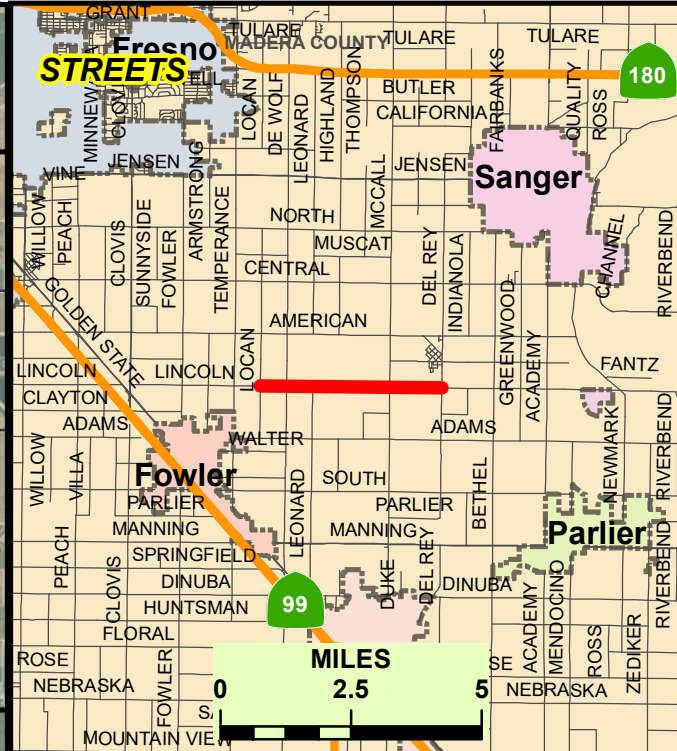
**CMAQ CANDIDATE  
 ELKHORN AVE FROM FOWLER AVE TO SR 43  
 SHOULDER IMPROVEMENTS**



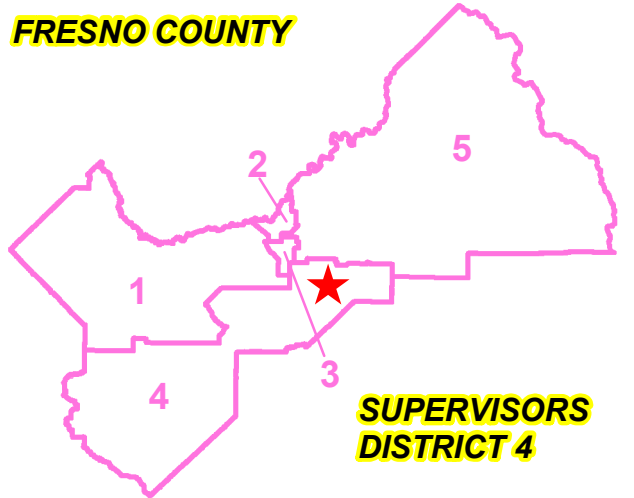
**LOCATION DETAIL**



**PROJECT LIMITS**



**FRESNO COUNTY**

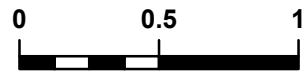


**SUPERVISORS DISTRICT 4**

Source: Esri, DigitalGlobe, GeoEye, Earthstar Geographics, CNES/Airbus DS, USDA, USGS, AeroGRID, IGN, and the GIS User Community

Prepared By: Diana Nuttman, Staff Analyst  
 Date: 08/03/2021  
 Agency: County of Fresno  
 Department: Public Works & Planning  
 Division: Design

SCALE IN MILES



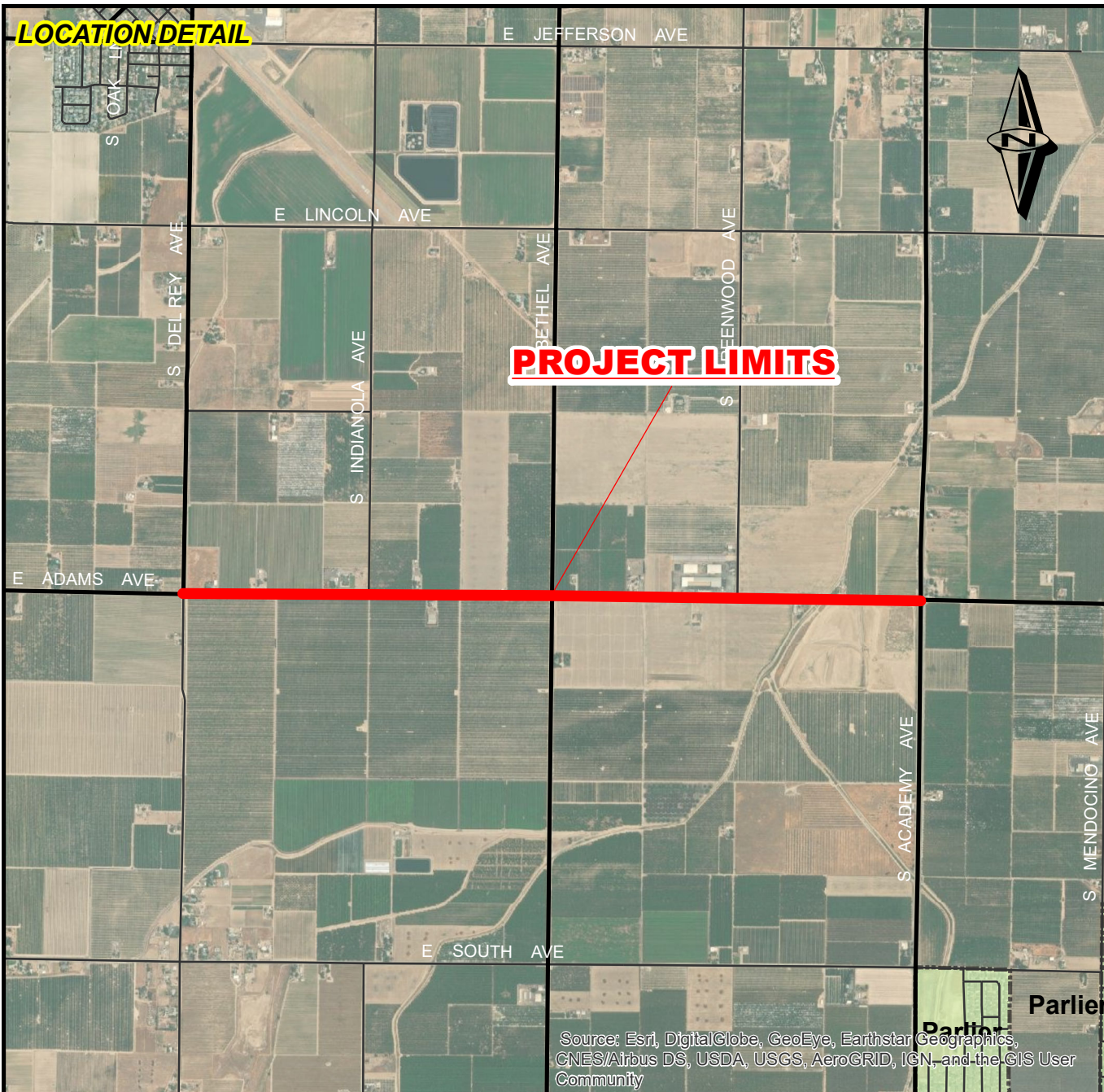
DEPARTMENT OF PUBLIC WORKS & PLANNING

**CMAQ CANDIDATE  
 ADAMS AVE FROM LOCAN AVE TO DEL REY AVE  
 SHOULDER IMPROVEMENTS**

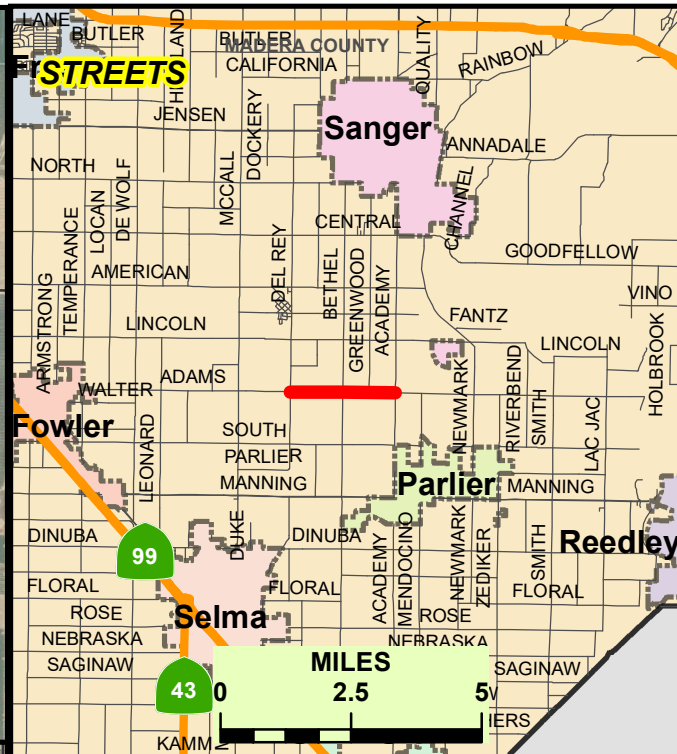
2220 TULARE STREET, 6TH FLOOR, FRESNO, CA 93721  
 Phone: (559) 600-4109 | Fax: (559) 600-4544



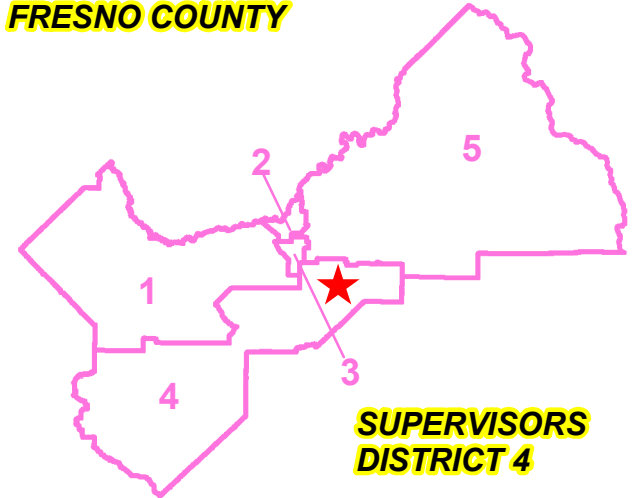
**LOCATION DETAIL**



**PROJECT LIMITS**



**FRESNO COUNTY**



**SUPERVISORS DISTRICT 4**

Source: Esri, DigitalGlobe, GeoEye, Earthstar Geographics, CNES/Airbus DS, USDA, USGS, AeroGRID, IGN, and the GIS User Community

Prepared By: Diana Nuttman, Staff Analyst  
 Date: 08/03/2021  
 Agency: County of Fresno  
 Department: Public Works & Planning  
 Division: Design

SCALE IN MILES

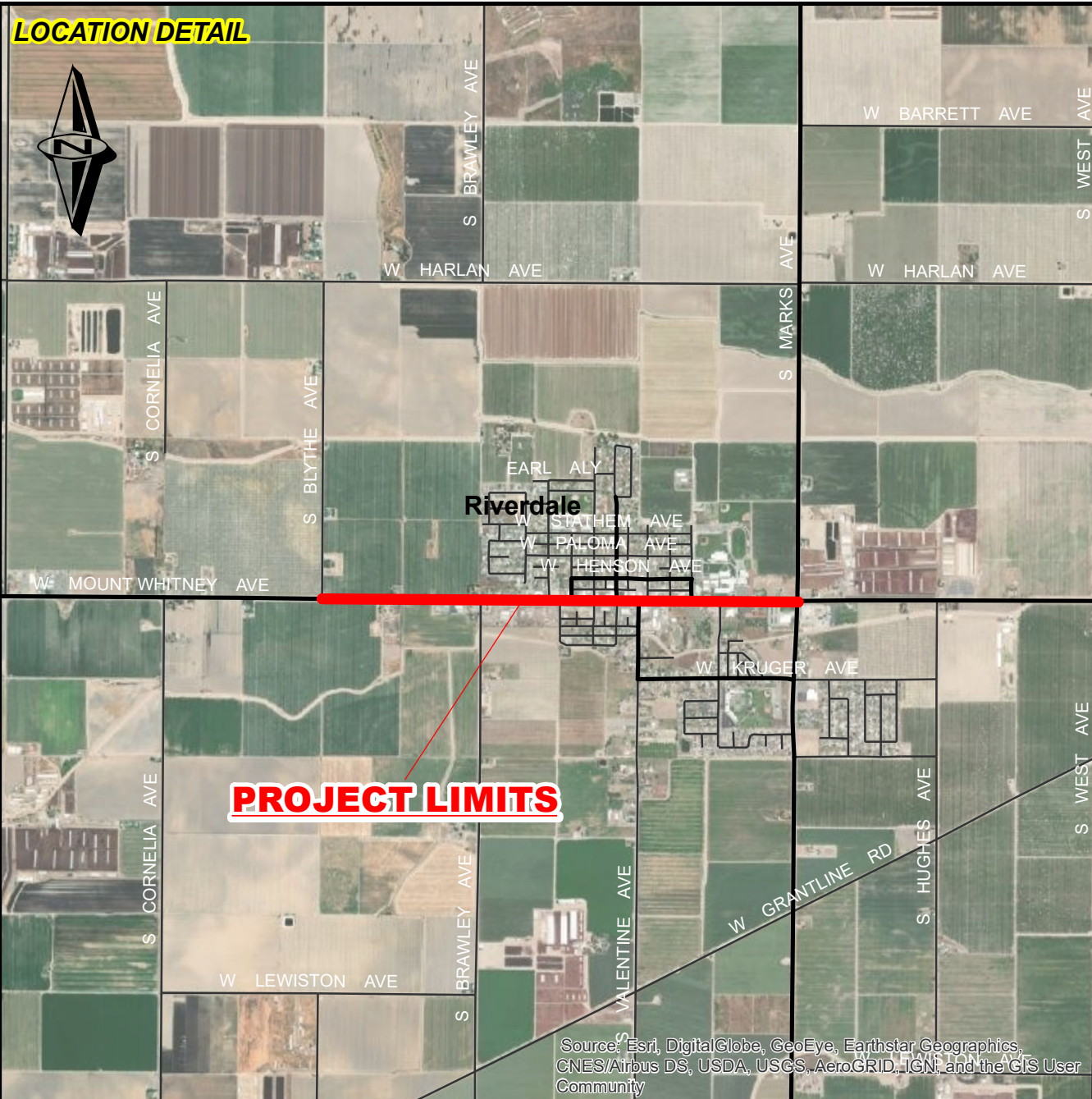


DEPARTMENT OF PUBLIC WORKS & PLANNING

**CMAQ CANDIDATE  
 ADAMS AVE FROM DEL REY AVE TO ACADEMY AVE  
 SHOULDER IMPROVEMENTS**



**LOCATION DETAIL**

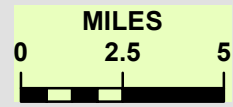
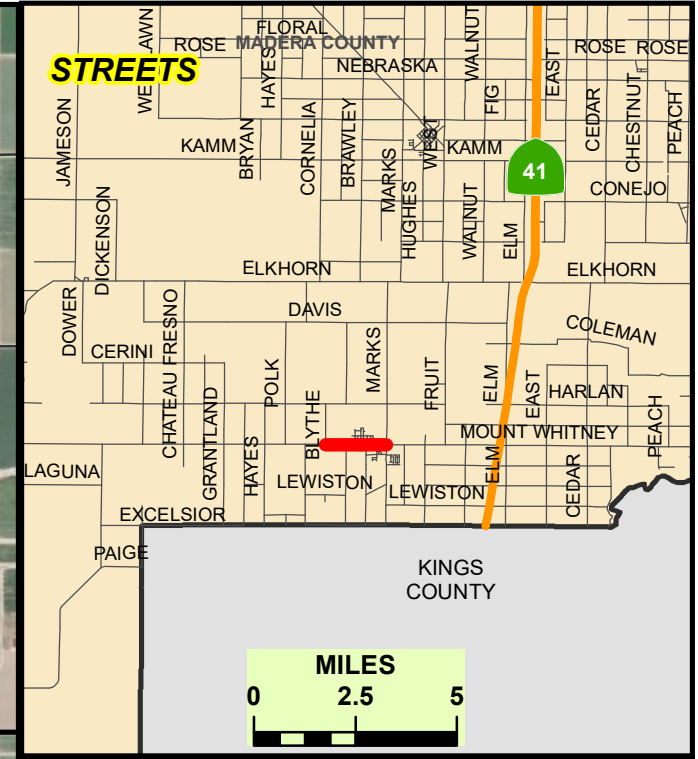


**PROJECT LIMITS**

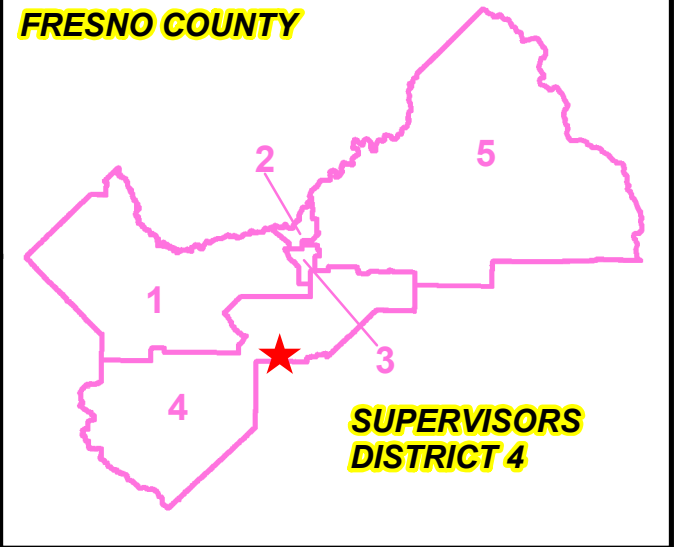
**Riverdale**

Source: Esri, DigitalGlobe, GeoEye, Earthstar Geographics, CNES/Airbus DS, USDA, USGS, AeroGRID, IGN, and the GIS User Community

**STREETS**



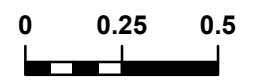
**FRESNO COUNTY**



**SUPERVISORS DISTRICT 4**

Prepared By: Diana Nuttman, Staff Analyst  
 Date: 08/03/2021  
 Agency: County of Fresno  
 Department: Public Works & Planning  
 Division: Design

**SCALE IN MILES**



**DEPARTMENT OF PUBLIC WORKS & PLANNING**

**STBG CANDIDATE - MT WHITNEY AVE  
 BLYTHE AVE TO MARKS AVE  
 ROAD RECONSTRUCTION AND SHOULDER WIDENING**

2220 TULARE STREET, 6TH FLOOR, FRESNO, CA 93721  
 Phone: (559) 600-4109 | Fax: (559) 600-4544