



Sustainable Groundwater Management Act

Board of Supervisors
September 27, 2016

Sustainable Groundwater Management Act (SGMA)

- Adopted in 2014
- Gives local public agencies the ability to form Groundwater Sustainability Agencies (GSAs) to comply with SGMA
 - Local public agencies defined as those with water supply, water management, or land use responsibilities within the groundwater basin – Water Code §10721(n)
- Counties are backstop to local agencies
- Requires GSAs to adopt and implement Groundwater Sustainability Plans (GSPs)
- State will intervene if locals and counties fail

Sustainable Groundwater Management

State's high priority groundwater basins must achieve sustainability by 2040. Sustainability defined as not causing the following undesirable results:

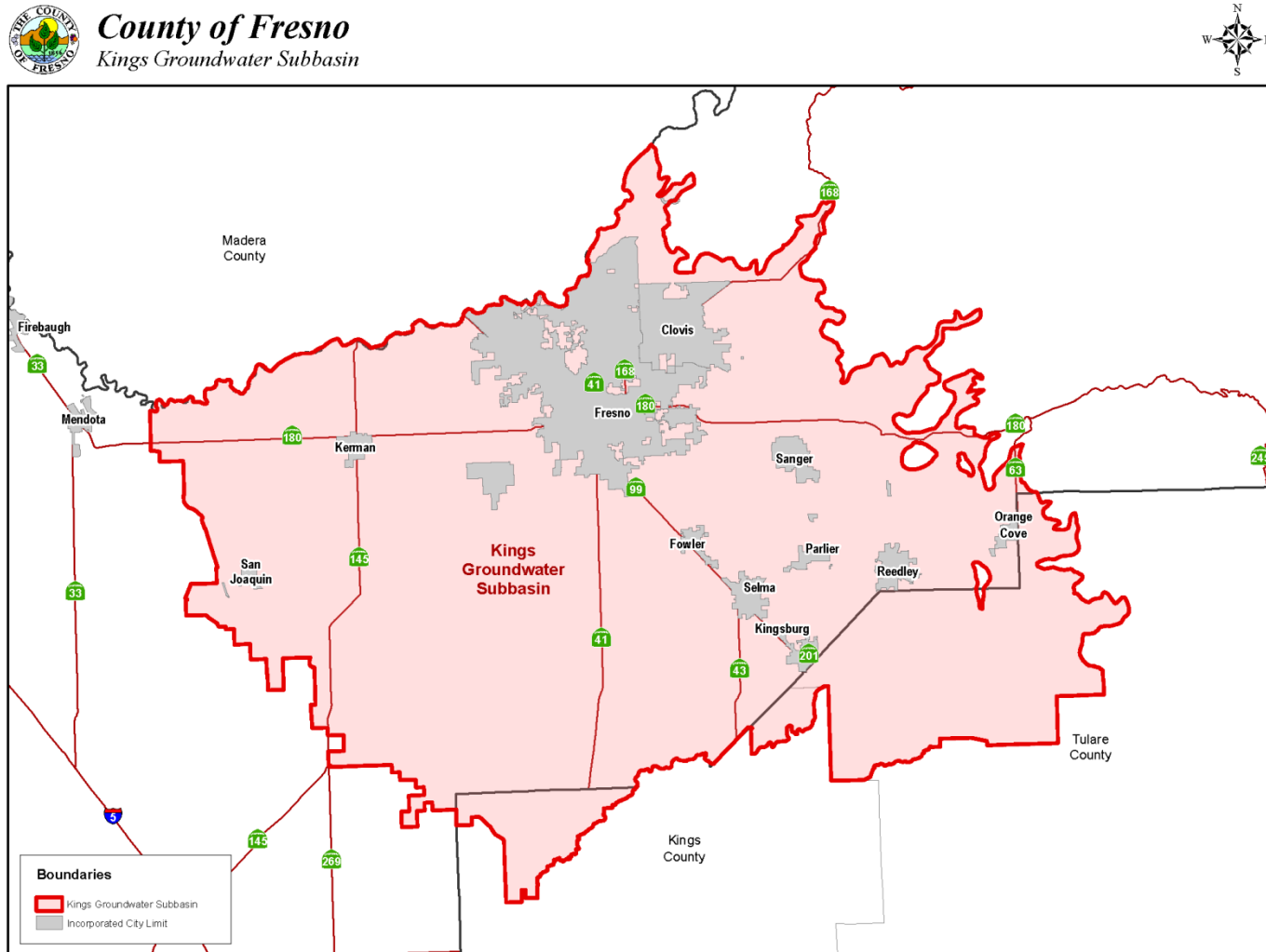
- Chronic lowering of groundwater levels
- Reductions in groundwater storage
- Seawater intrusion
- Degraded water quality
- Land subsidence
- Surface water depletions that have adverse impacts on beneficial uses

Sustainable Groundwater Management

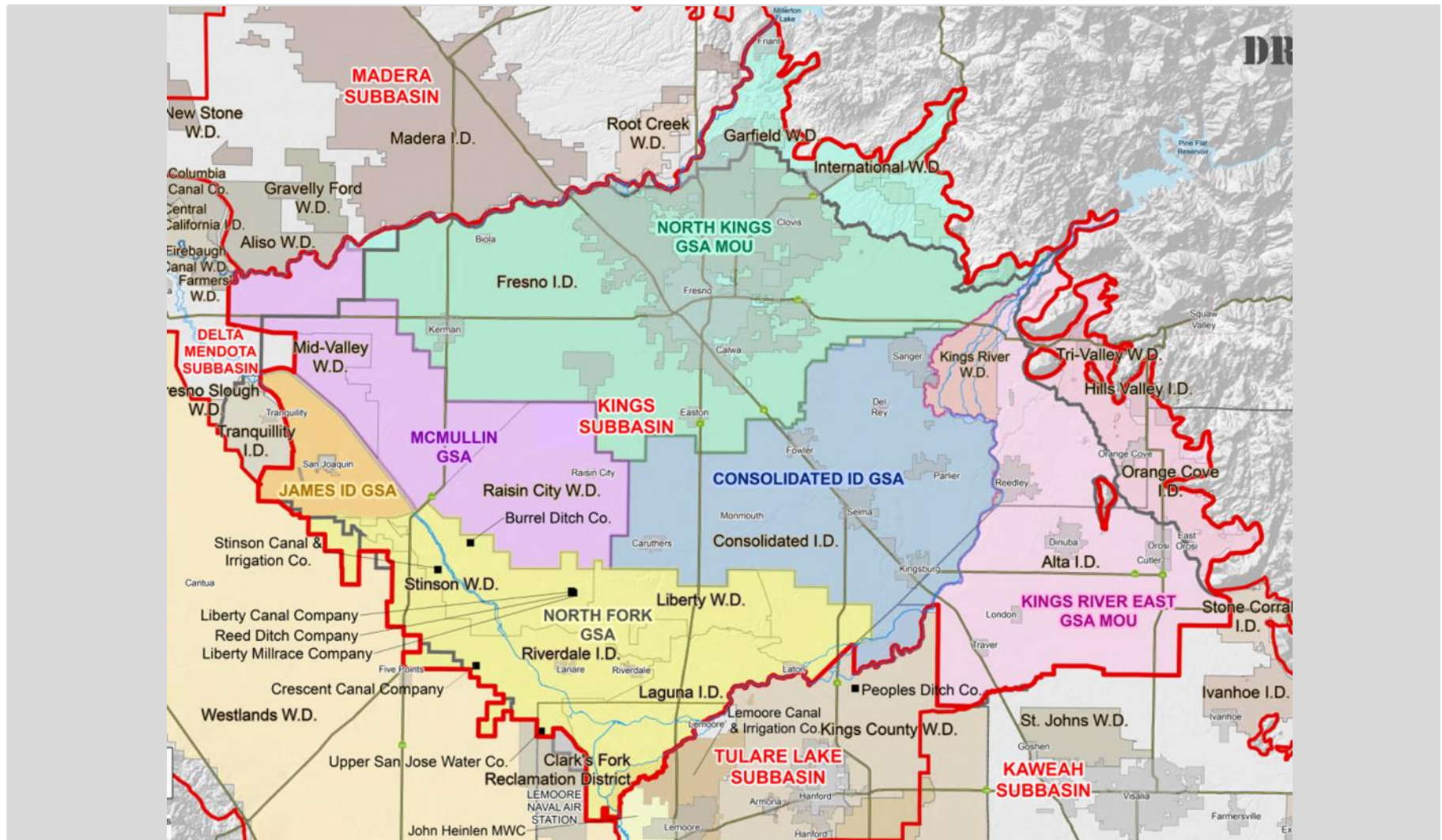
- State Water Resources Control Board may intervene in a basin if GSA not formed or fails to adopt / implement a compliant GSP
- Designate the basin as “probationary”
- Interim plan until GSA formed and compliant GSP is developed

Deadline	Cause of Intervention
June 30, 2017	No Groundwater Sustainability Agency (GSA)
Jan. 31, 2020	Groundwater Sustainability Plan (GSP) required to be submitted to DWR. DWR reviews for compliance
Jan. 31, 2025	GSP is inadequate / inadequate progress toward sustainability

Current GSA Formation Efforts Within the Kings Groundwater Subbasin



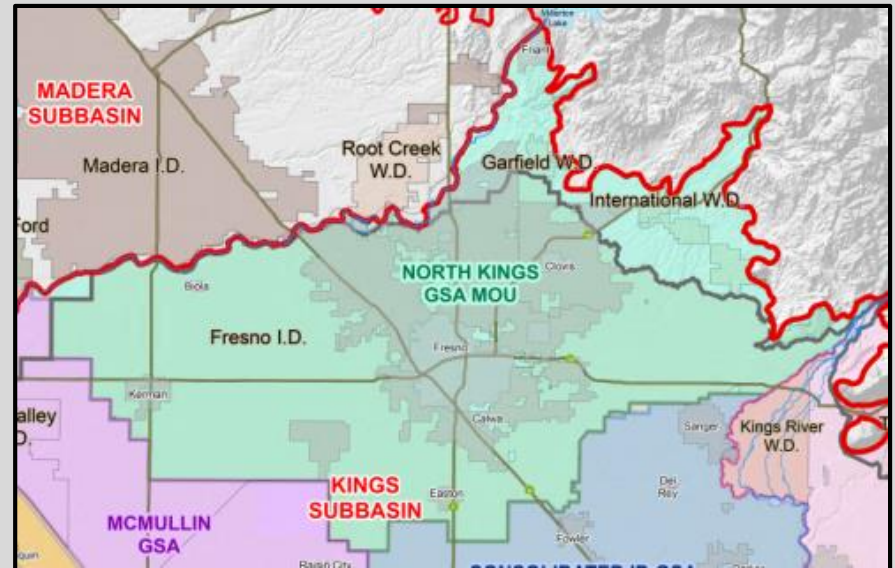
Current GSA Formation Efforts Within the Kings Groundwater Subbasin



Current GSA Formation Efforts Within the Kings Groundwater Subbasin

North Kings GSA

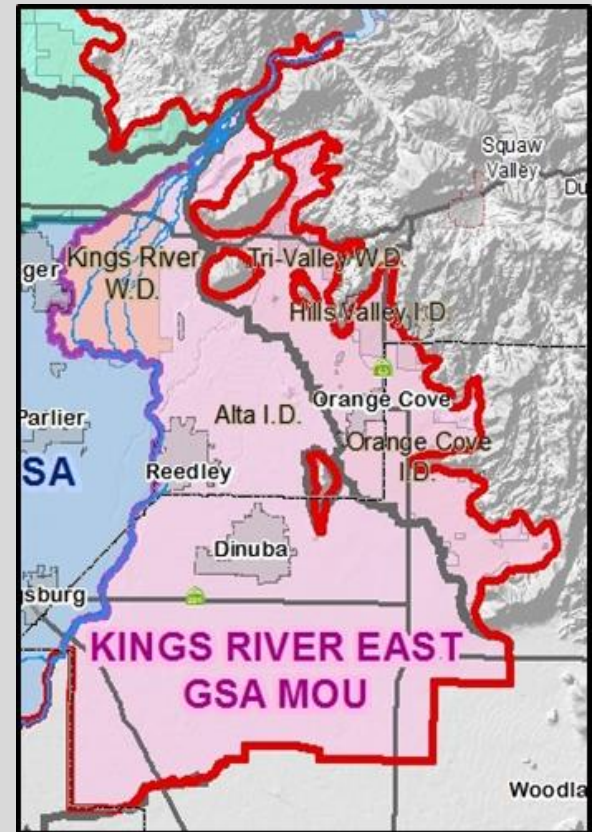
- Joint Powers Authority proposed to serve as the GSA
- 7 member governing Board
- Fresno County will appoint one member of the governing Board
- County's contribution estimated to be \$21,532.50 for FY 2016-17
- County's contribution rate set at 15.95% and capped at \$308,582 through January 2020.



Current GSA Formation Efforts Within the Kings Groundwater Subbasin

Kings River East GSA

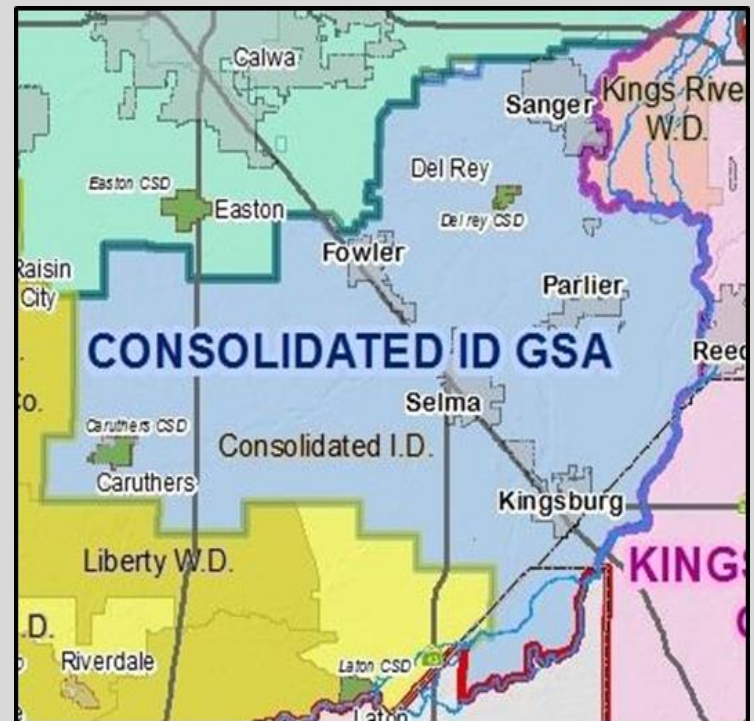
- Agency formation through special act legislation (SB 37 Vidak) signed by the governor this month
- 15 participants, 7-member governing Board
- Fresno County will appoint one member of the governing Board
- Notice of Intent to form a GSA filed with DWR
- Considered the exclusive GSA for the area



Current GSA Formation Efforts Within the Kings Groundwater Subbasin

Consolidated GSA

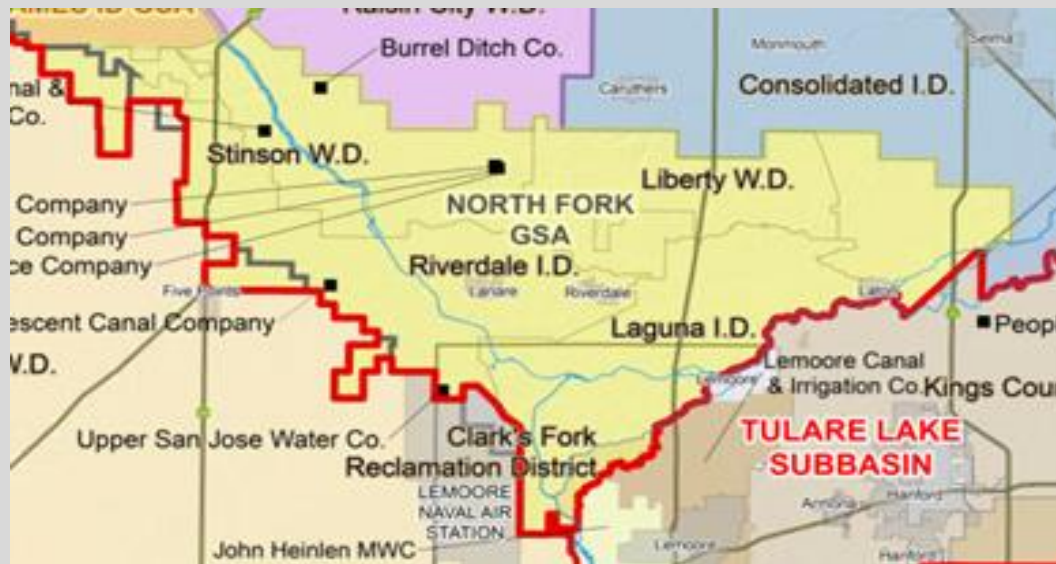
- Consolidated Irrigation District intends to file to become a GSA
- Consolidated ID working to develop agreements with the cities within their jurisdictional boundary
- County seeking to enter into an MOU with Consolidated ID



Current GSA Formation Efforts Within the Kings Groundwater Subbasin

North Fork Kings GSA

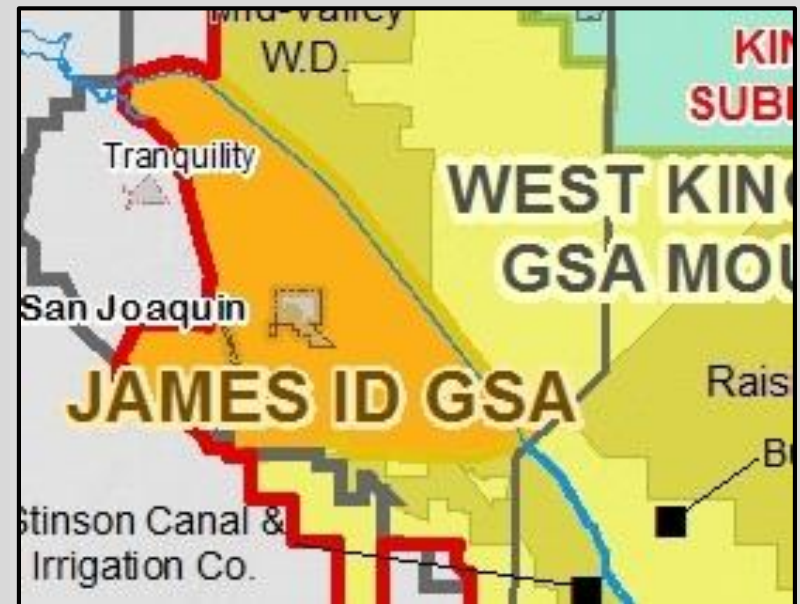
- Agency formation through special act legislation (SB 564 Cannella) signed by the governor this month
- 15 participants 7- member governing Board
- Fresno County will appoint one member of the governing Board



Current GSA Formation Efforts Within the Kings Groundwater Subbasin

James ID GSA

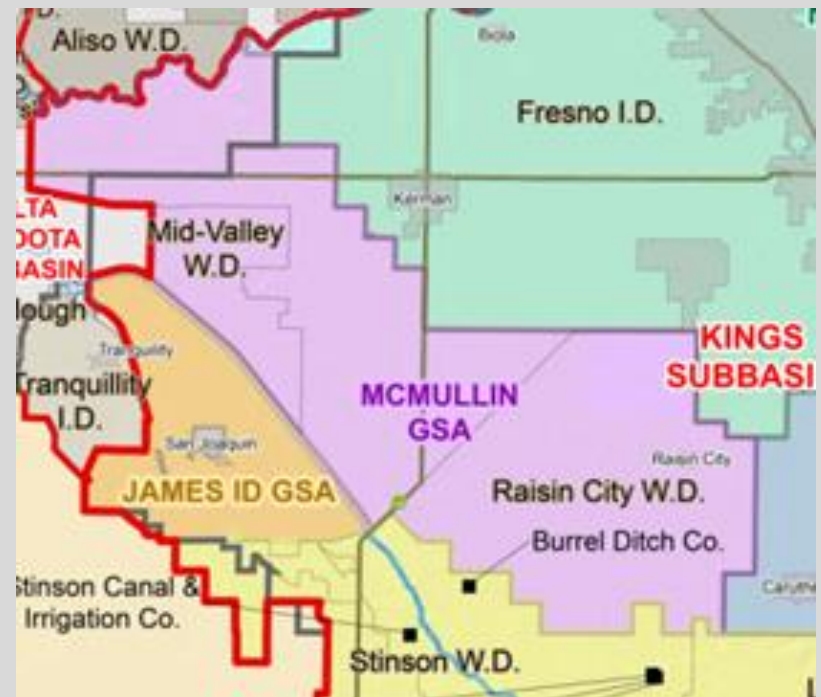
- Considered the exclusive GSA for the area
- MOU between Fresno County and the James ID executed May 2016



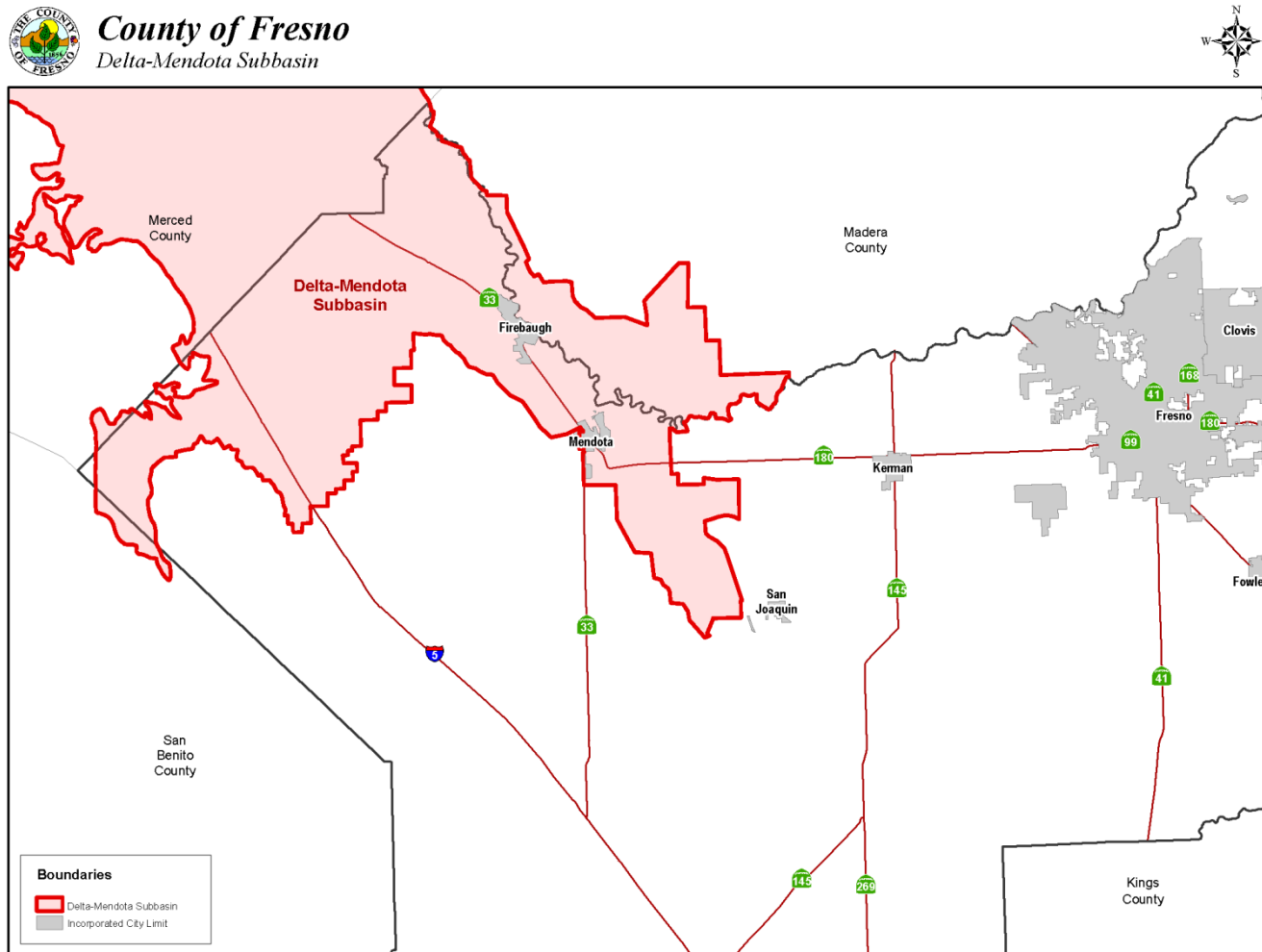
Current GSA Formation Efforts Within the Kings Groundwater Subbasin

McMullin Area

- County has received a request from Mid-Valley Water District and Raisin City Water District to explore the formation of a Joint Powers Authority



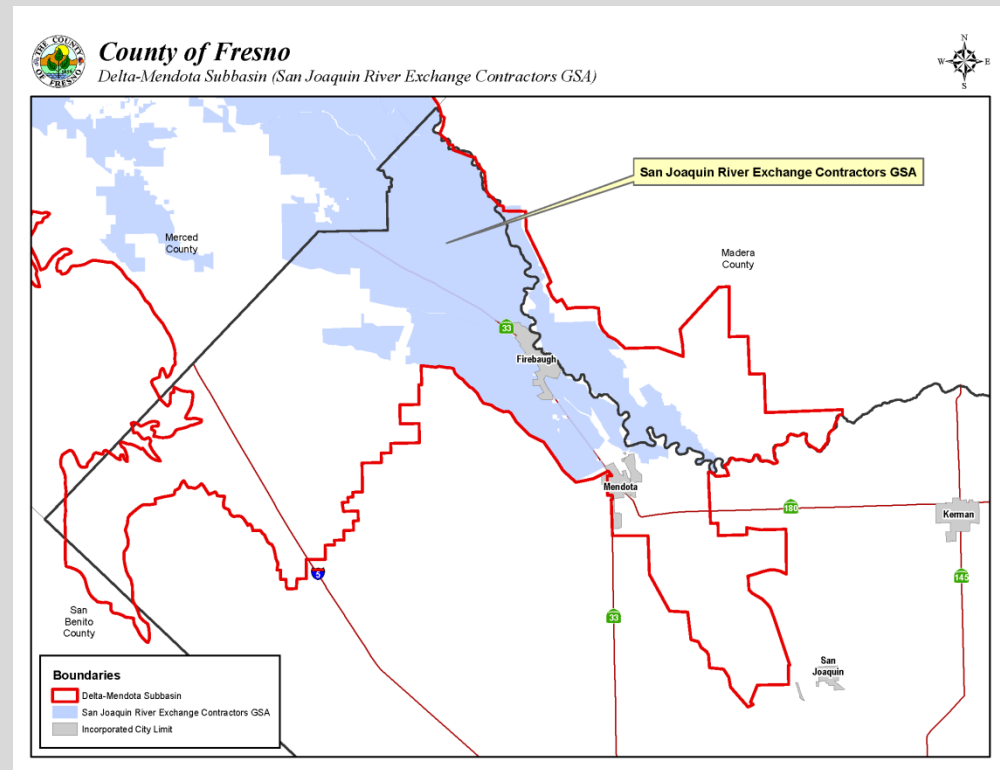
Current GSA Formation Efforts Within the Delta-Mendota Groundwater Subbasin



Current GSA Formation Efforts Within the Delta-Mendota Groundwater Subbasin

San Joaquin River Exchange Contractors Water Authority (SJRECWA)

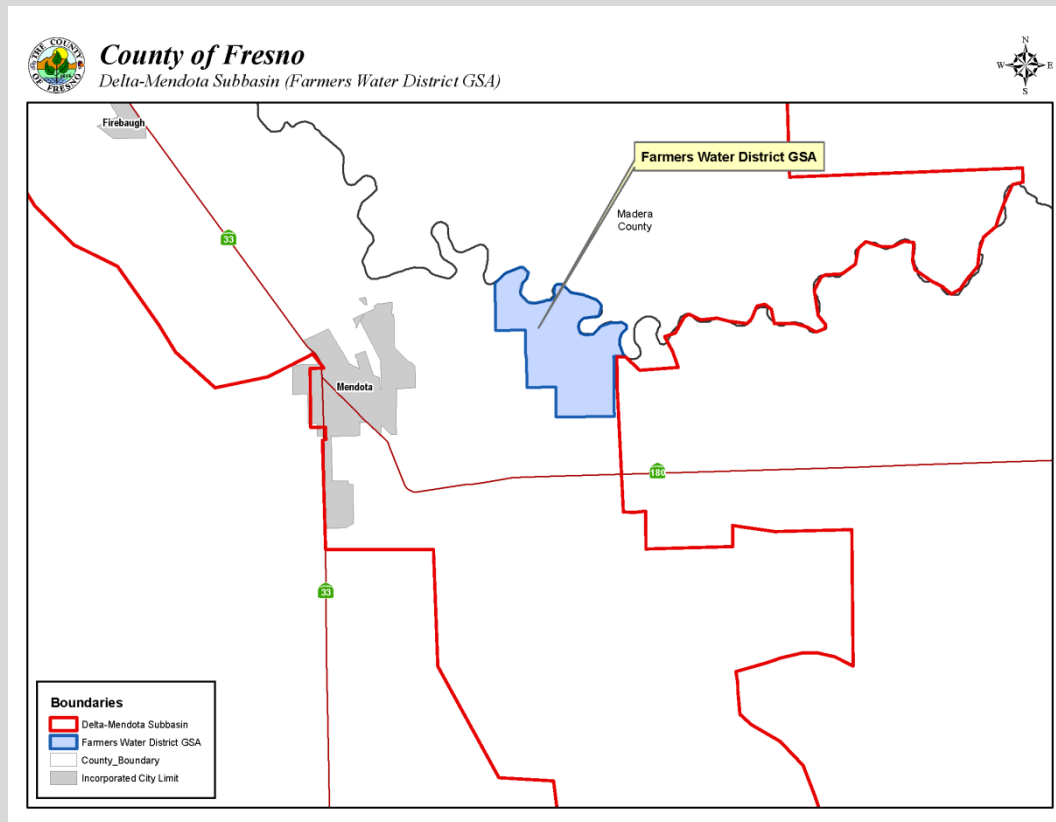
- Considered exclusive GSA for the area
- MOU between the County and SJRECWA executed March 2016



Current GSA Formation Efforts Within the Delta-Mendota Groundwater Subbasin

Farmers Water District

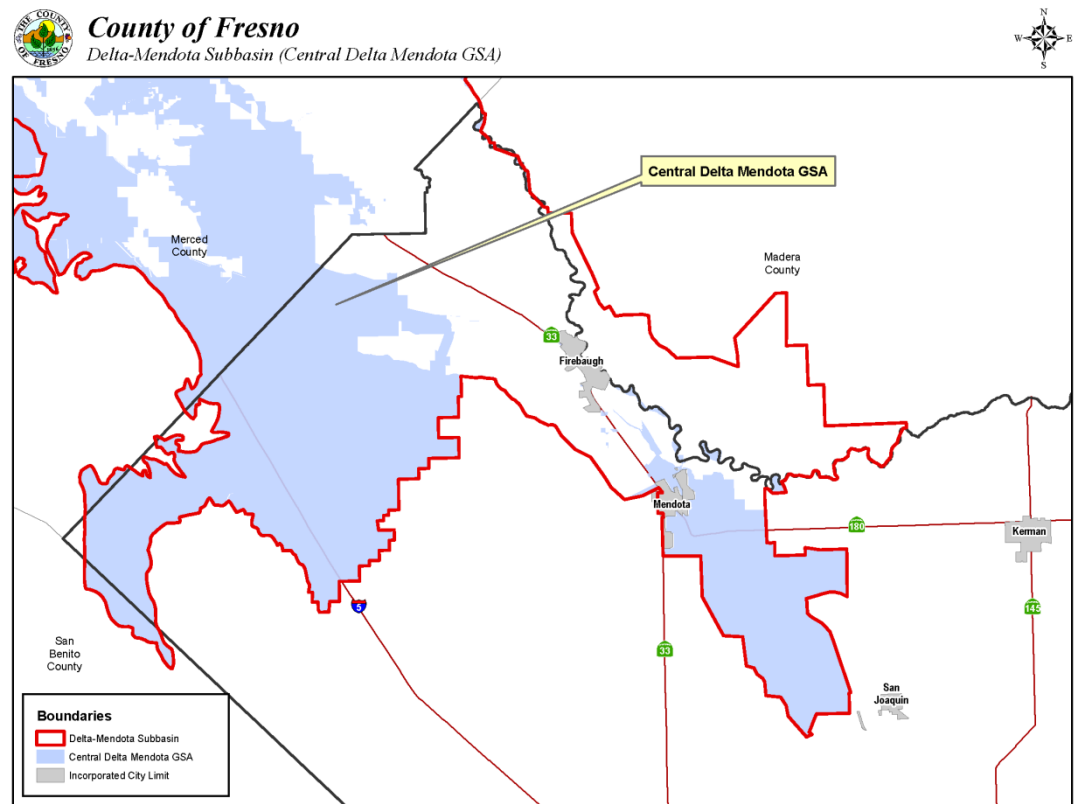
- Considered exclusive GSA for the area
- MOU between the County and Farmers Water District executed August 2016



Current GSA Formation Efforts Within the Delta-Mendota Groundwater Subbasin

Central Delta-Mendota GSA

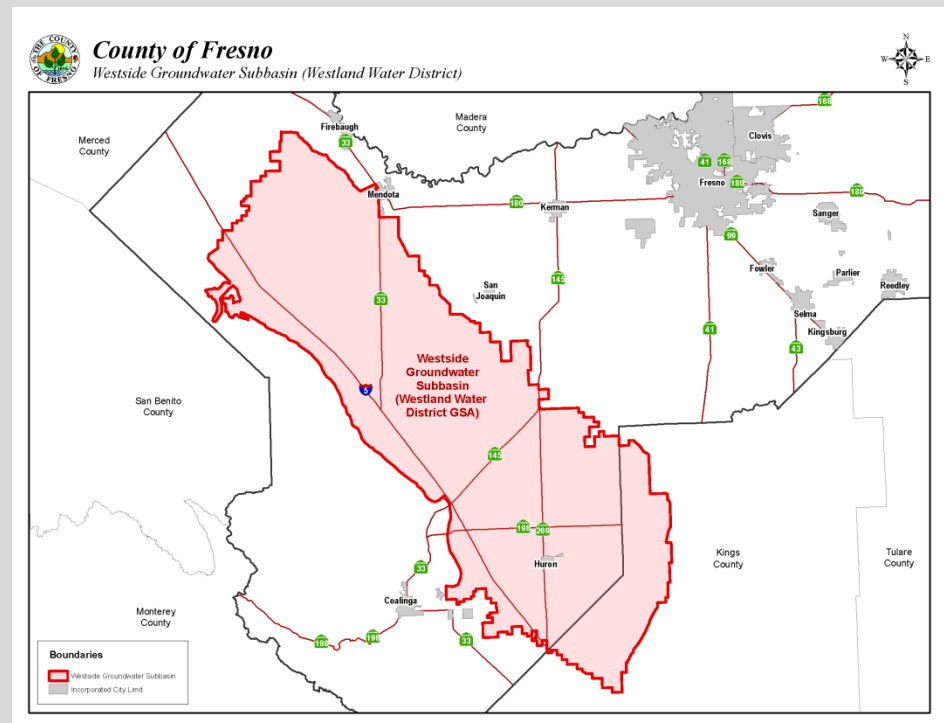
- 14 participating agencies working on a Memorandum of Agreement (MOA)
- MOA would form a steering committee
- Envisioned that each member would appoint a representative to the steering committee



Current GSA Formation Efforts Within the Westside Groundwater Subbasin

Westlands Water District GSA

- Notice of Intent to form a GSA filed with DWR
- Considered exclusive GSA for the area on November 1, 2016, if no other overlapping notice is filed
- MOU between the County and Westlands to go to respective Boards in October 2016





Implementation of the Sustainable Groundwater Management Act