

Fresno County Childcare Subsidy Pilot Program (AB 258)



Who?

- Child Care & Development Local Planning Councils (LPC) were established by the state legislature in 1991 in every county in California
 - Mandated to identify priorities for the local distribution state funding for child care services for low income children and families
 - Stems from a partnership between FCSS and BOS; ½ members appointed by FCSS and ½ appointed by BOS; reports to CDE-EESD are also vetted by BOS
 - FCSS is the fiscal agent and provides oversight for the LPC in Fresno County

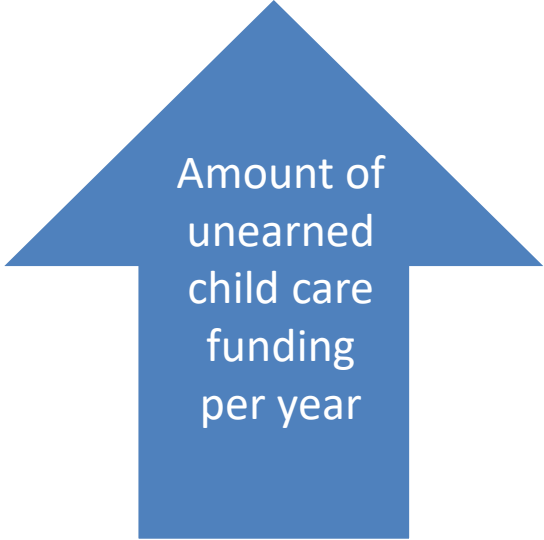


Who?

- The Fresno County Child Care & Development Local Planning Council (LPC) is responsible for the facilitation, implementation, and on-going evaluation of the Fresno County Childcare Subsidy Pilot
 - The LPC is partially funded by California Department of Education and Fresno County Superintendent of Schools (FCSS) – thus, FCSS will be fiscally responsible for implementation of the Pilot




Why?



Amount of
unearned
child care
funding
per year

In 2014-15, Fresno County returned nearly \$10 million, and in 2015-16 nearly \$13 million of CDE administered child care funding

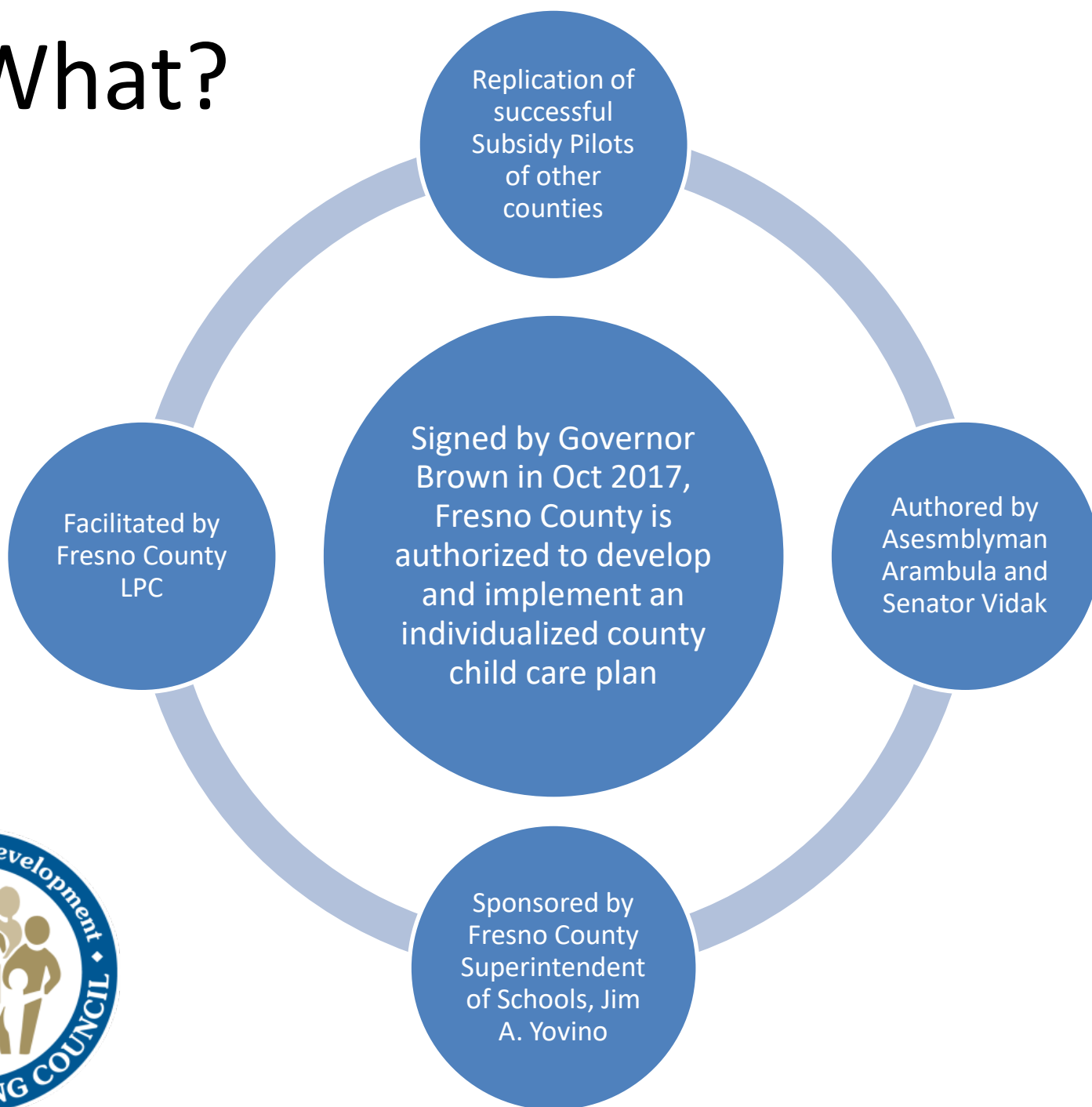


The
number of
children
who are
served

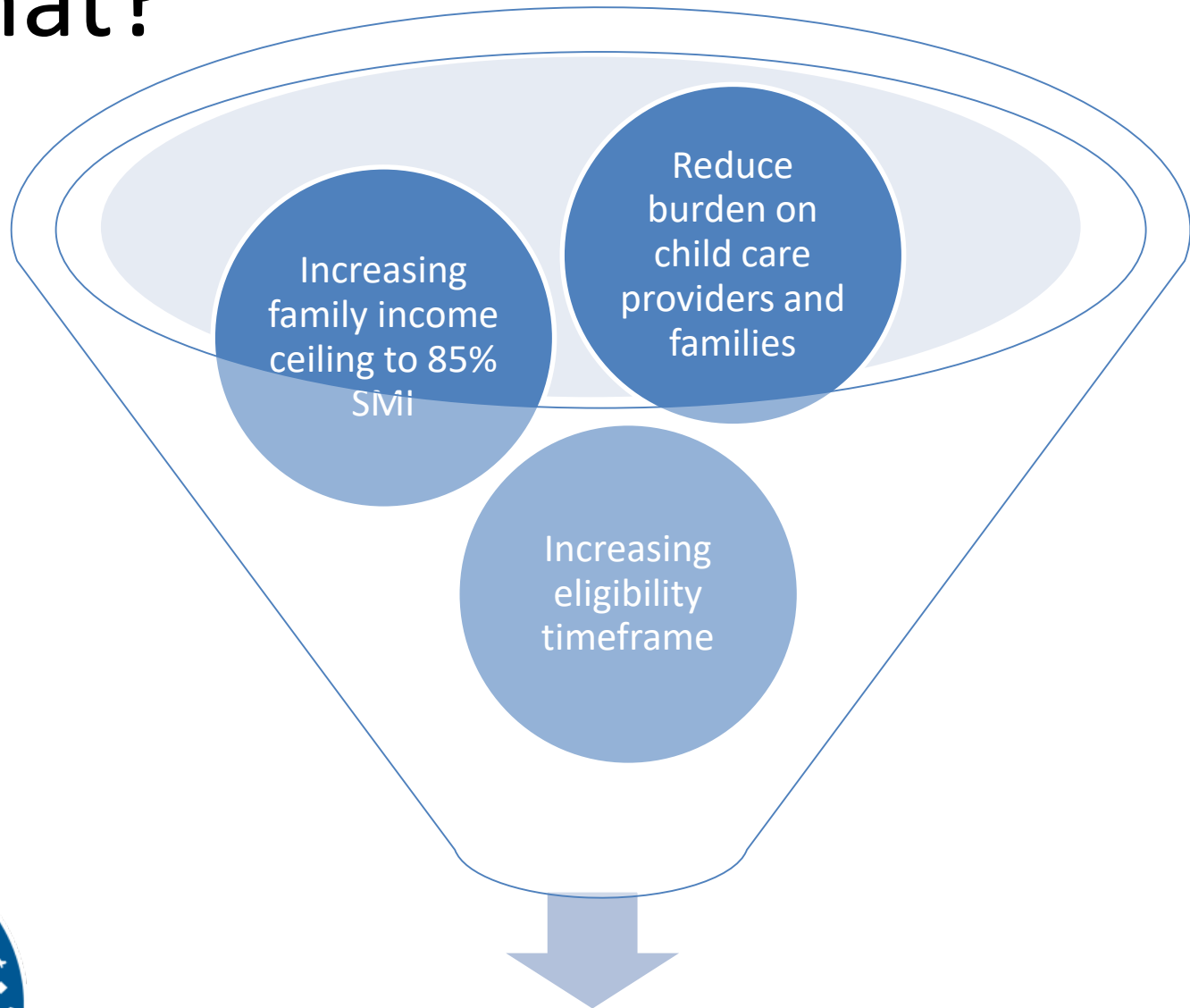
As a result, less children are served (more than 1,300 could have been served per year)



What?



What?



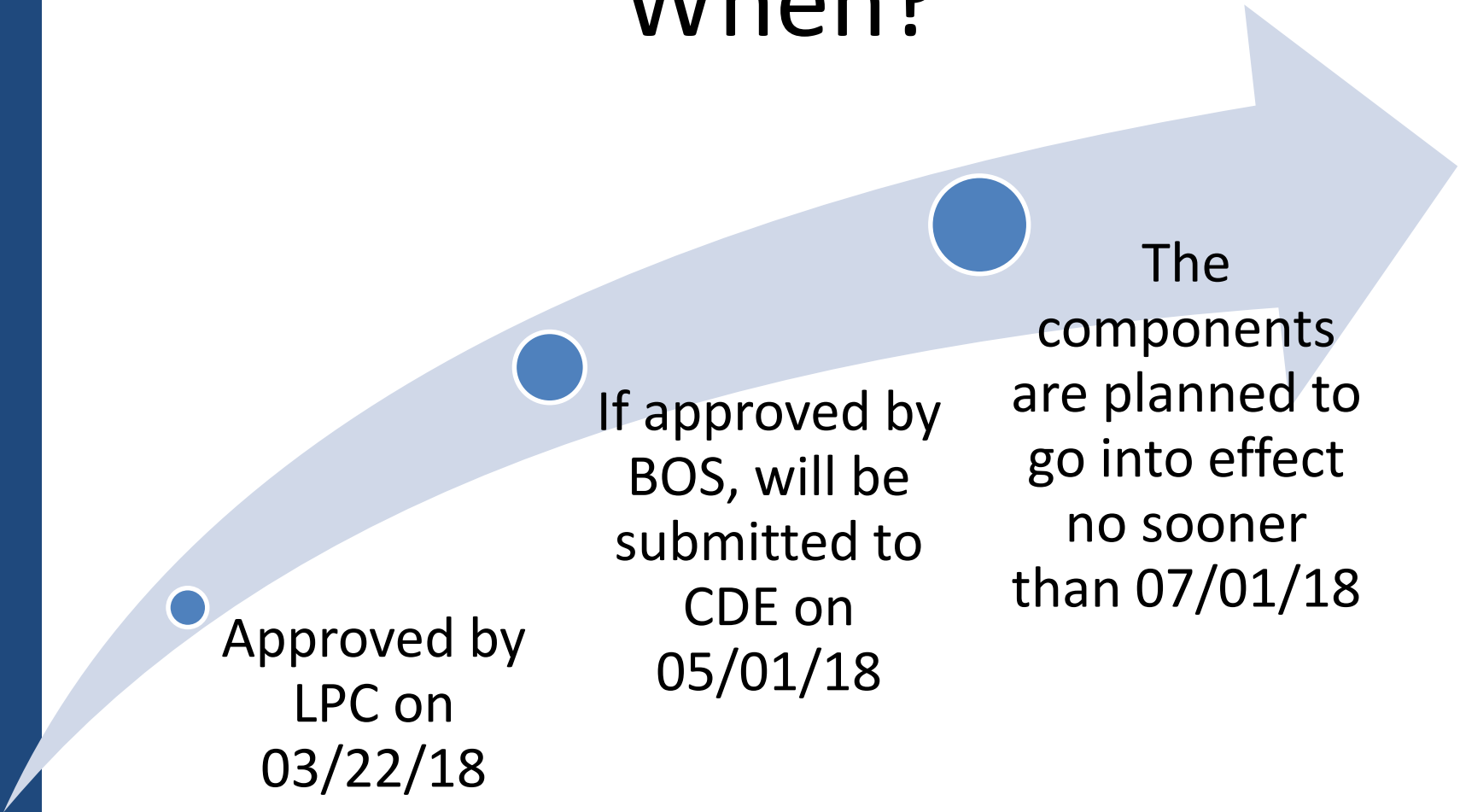
Serve more children of low-income, working families

How?

- Develop an “implementation plan” which must be approved by LPC, BOS, and ultimately CDE
 - Plan Development Committee (composed of child care providers who are funded by CDE and LPC members) helped draft the plan
 - Plan template developed by previously approved Pilot counties, and consists of:
 - Local data
 - Proposed modifications
 - Outcomes and evaluation plan
- The LPC is responsible for collecting data and conducting an evaluation of the Pilot – and reporting results to CDE and ultimately the legislature



When?



Approved by
LPC on
03/22/18

If approved by
BOS, will be
submitted to
CDE on
05/01/18

The
components
are planned to
go into effect
no sooner
than 07/01/18

