

BEFORE THE BOARD OF SUPERVISORS
OF THE COUNTY OF FRESNO
STATE OF CALIFORNIA

IN THE MATTER OF REVISING THE)
COUNTY MAINTAINED ROAD MILEAGE)

RESOLUTION

WHEREAS, Section 2121 of the Streets and Highways Code provides that in May of each year, each County shall submit to the California Department of Transportation any additions to or subtractions from its mileage of maintained County roads, specifying the termini and mileage of each route added or subtracted; and

WHEREAS, the Department of Transportation certified to the State Controller in the year 2017 that the total mileage of maintained Fresno County roads for the year ending December 31, 2016 was approximately 3,505.15 miles.

NOW THEREFORE IT BE RESOLVED, that the total mileage of maintained County roads as of December 31, 2017 be declared as approximately 3,495.98 miles, in accordance with the adjustments to the tabulation marked Exhibit A, and as indicated on the set of map excerpts marked Exhibit B. Both Exhibits are hereby incorporated as a part of this Resolution by reference thereto.

BE IT FURTHER RESOLVED AND ORDERED, that duplicate copies of the hereinabove said Exhibits A and B shall be filed in the office of the Director of the Department of Public Works and Planning of the County of Fresno.

///

///

///

///

///

///

1 THE FOREGOING, was passed and adopted by the following vote of the Board of
2 Supervisors of the County of Fresno this 8th day of May 2018, to wit:

3
4 AYES: Supervisors Borgeas, Magsig, Mendes, Pacheco, Quintero

5 NOES: None

6 ABSENT: None

7 ABSTAINED: None

8

9

BY Sal Quintero
Sal Quintero, Chairperson of the Board of
Supervisors of the County of Fresno

10

11

12 ATTEST:
13 BERNICE E. SEIDEL
14 Clerk of the Board of Supervisors
County of Fresno, State of California

14

15 BY Rubén Cuyab
Deputy

16

17

18

19

20

21

22

23

24

25

26

27

28

EXHIBIT A

SUMMARY OF CHANGES

2016 MAINTAINED MILEAGE BALANCE FORWARD:

3505.15

ROAD	START	END	LENGTH	MAP NO.	MEMO:
------	-------	-----	--------	---------	-------

REDUCTIONS:

ANNEXATIONS:

CHERRY	NORTH	0.047 S/O NORTH	0.047	10N53	Annexed to City of Fresno 01/05/2017
NORTH	0.051 W/O CHERRY	CHERRY	0.051	10N53	Annexed to City of Fresno 01/05/2017
CENTRAL	MARY	EAST	0.255	10N53	Annexed to City of Fresno 02/02/2017
EAST	0.567 N/O CENTRAL (C.L.)	0.374 N/O CENTRAL (C.L.)	0.193	10N53	Annexed to City of Fresno 02/02/2017
POLK	0.183 N/O SHIELDS	0.246 N/O SHIELDS	0.063	10N42	Annexed to City of Fresno 02/13/2017
ALLUVIAL	0.250 W/O CHESTNUT (C.L.)	CHESTNUT	0.250	10N33	Annexed to City of Fresno 04/28/2017
BRAWLEY	0.224 S/O SSR 180	0.370 S/O SSR 180	0.126	10N52	Annexed to City of Fresno 05/15/2017
BRAWLEY	0.370 S/O SSR 180	MADISON	0.130	10N52	Annexed to City of Fresno 05/15/2017
MADISON	0.043 E/O VALENTINE	VALENTINE	0.043	10N52	Annexed to City of Fresno 05/15/2017
MADISON	VALENTINE	BRAWLEY	0.501	10N52	Annexed to City of Fresno 05/15/2017
VALENTINE	SSR 180	0.244 S/O SR 180	0.244	10N52	Annexed to City of Fresno 05/15/2017
VALENTINE	0.045 N/O MADISON	MADISON	0.045	10N52	Annexed to City of Fresno 05/15/2017
WHITESBRIDGE	VALENTINE	0.254 W/O VALENTINE	0.254	10N52	Annexed to City of Fresno 05/17/2017
ARMSTRONG	OLIVE	FLORADORA	0.256	10N44	Annexed to City of Fresno 05/17/2017
FLORADORA	0.127 E/O FOWLER	ARMSTRONG	0.373	10N44	Annexed to City of Fresno 05/17/2017
OLIVE	0.128 E/O FOWLER	ARMSTRONG	0.374	10N44	Annexed to City of Fresno 05/17/2017
ASHLAN	0.125 E/O LEONARD	0.250 E/O LEONARD	0.125	10N44	Annexed to City of Clovis 07/17/2017
FLORAL	0.500 E/O DE WOLF	0.625 E/O DE WOLF (SELMA C.L.)	0.125	10P24	Annexed to City of Selma 07/28/2017
ANNADALE	0.187 E/O CHESTNUT	0.311 E/O CHESTNUT	0.124	10N53	Annexed to City of Fresno 07/30/1985(Correction)
WELDON	FELAND	END MAINT RD	0.066	10N42	Annexed to City of Fresno 11/24/1981(Correction)
WILLOW	COPPER	1.150 N/O COPPER (SLAXO)	1.150	10N33	Annexed to City of Fresno 04/09/2012(Correction)
CHURCH	FIG	FAIR VIEW (FRESNO)	0.253	10N53	Annexed to City of Fresno 10/30/2017
CHURCH	FAIR VIEW (FRESNO)	0.120 W/O FAIR VIEW (C.L.)	0.120	10N52	Annexed to City of Fresno 10/30/2017
FIG	CHURCH	JENSEN	0.502	10N53	Annexed to City of Fresno 10/30/2017
JENSEN	FIG	0.379 E/O WALNUT (KNIGHT)	0.379	10N53	Annexed to City of Fresno 10/30/2017
DOCKERY	END MAINT RD	MOUNTAIN VIEW	0.291	10P24	Annexed to City of Selma 11/09/2017
DOCKERY	MOUNTAIN VIEW	END MAINT RD	0.369	10P24	Annexed to City of Selma 11/09/2017
MOUNTAIN VIEW	0.246 W/O DOCKERY	DOCKERY	0.246	10P24	Annexed to City of Selma 11/09/2017
MOUNTAIN VIEW	DOCKERY	VAN HORN	0.176	10P24	Annexed to City of Selma 11/09/2017
MOUNTAIN VIEW	VAN HORN	SSR 99	0.110	10P25	Annexed to City of Selma 11/09/2017

ROAD	START	END	LENGTH	MAP NO.	MEMO:
VAN HORN	GOLDEN STATE	END MAINT RD	0.290	10P25	Annexed to City of Selma 11/09/2017
VAN HORN	MOUNTAIN VIEW	0.140 S/O MOUNTAIN VIEW	0.140	10P25	Annexed to City of Selma 11/09/2017
VAN HORN	0.140 S/O MOUNTAIN VIEW	0.375 N/O KAMM	0.491	10P25	Annexed to City of Selma 11/09/2017

Total Annexed: 8.16

VACATIONS:

BEHYMER	DE WOLF	LEONARD	0.500	10N34	Vacated BOS 07/11/2017
DE WOLF	SHEPHERD	BEHYMER	1.075	10N34	Vacated BOS 07/11/2017
LEONARD	BEHYMER	END MAINT RD	0.246	10N34	Vacated BOS 07/11/2017
H	SECOND	HOWARD	0.109	9N45	Vacated BOS 10/25/2017

Total Vacated: 1.93

TOTAL REDUCTIONS: 10.09

ADDITIONS:

CORRECTIONS:

MOUNTAIN VIEW W/B (LANE 2 ONLY)	0.050	W/O GOLDEN STATE	GOLDEN STATE	0.050	10P25	N/O Section line (Lane 2) is within County's Jurisdiction
MOUNTAIN VIEW W/B (LANE 2 ONLY)	GOLDEN STATE		INDIANOLA	0.373	10P25	N/O Section line (Lane 2) is within County's Jurisdiction
MOUNTAIN VIEW W/B (LANE 2 ONLY)	INDIANOLA		BETHEL	0.503	10P25	N/O Section line (Lane 2) is within County's Jurisdiction

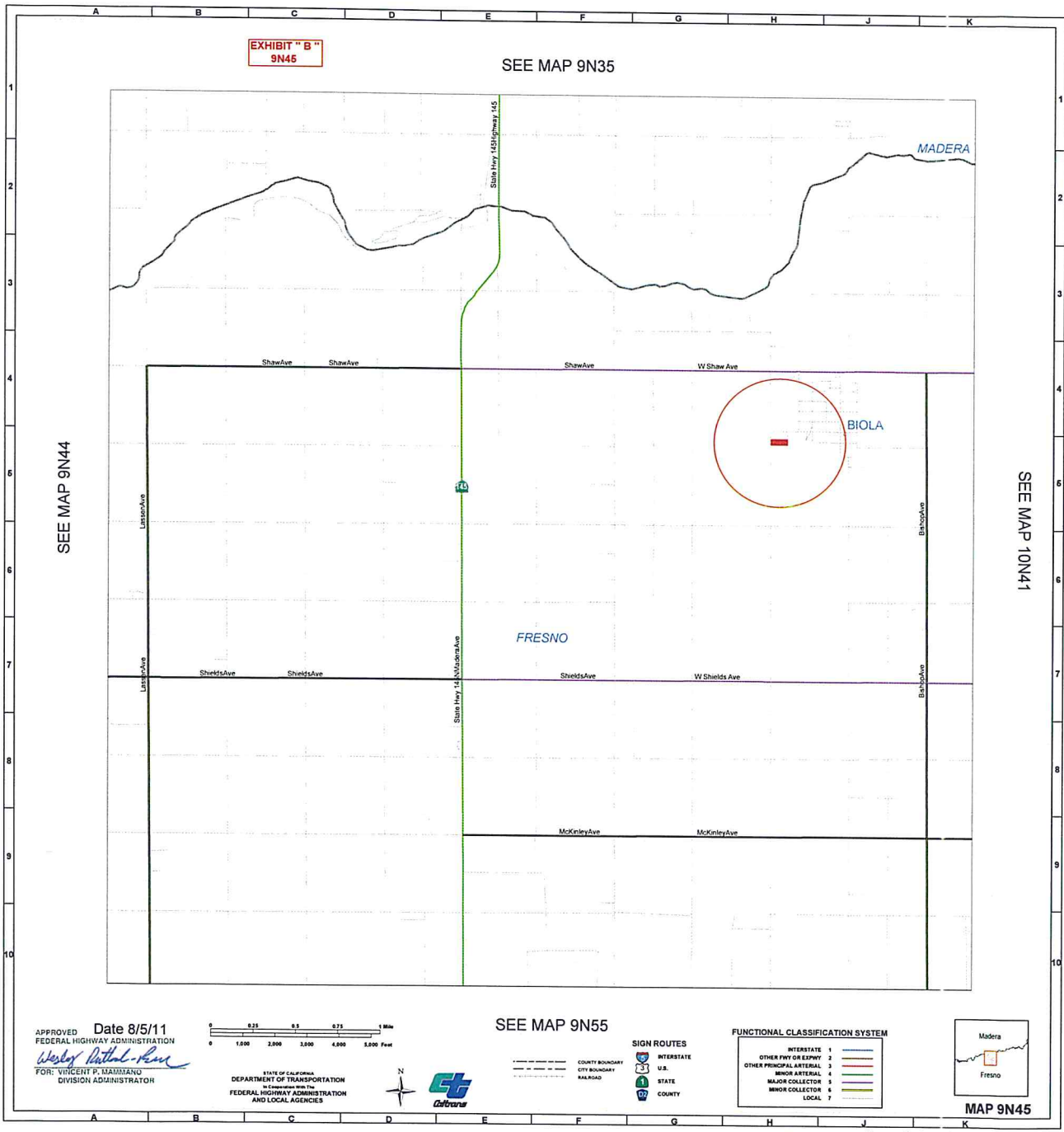
Total Corrected:

TOTAL ADDITIONS: 0.93

TOTAL 2017 MAINTAINED MILEAGE : 3495.98

Abbreviations:

C.L. = City Limits or County Line	N/O = North of
FR = Frontage	E/O = East of
CO = County	W/O = West of
RD = Road	E/B = East Bound
SR = State Route	W/B = West Bound
ALIGN - Alignment	N/B = North Bound
S/O = South of	S/B = South Bound



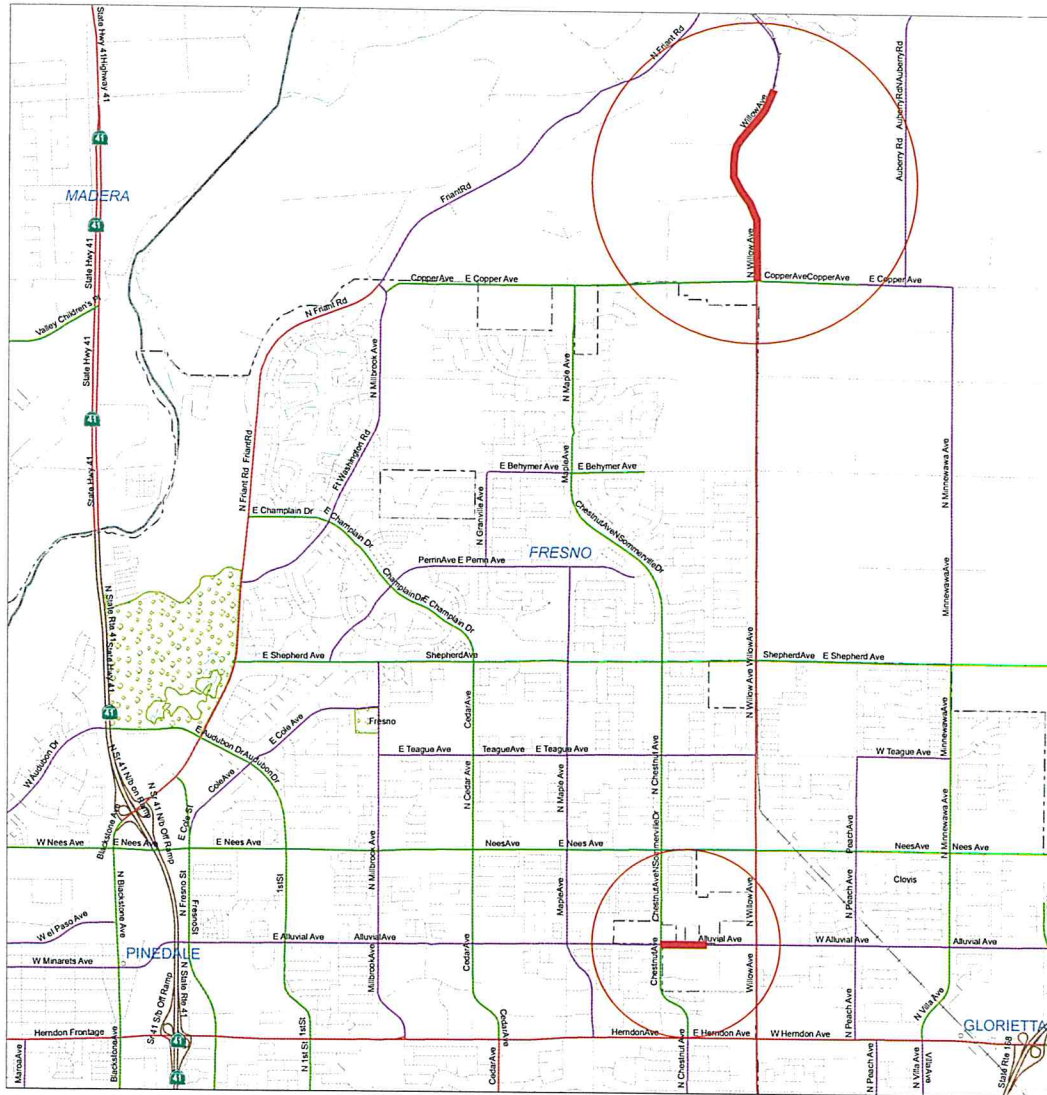
Fresno - Madera CALIFORNIA ROAD SYSTEM

EXHIBIT "B"
10N33

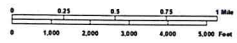
SEE MAP 10N23

SEE MAP 10N32

SEE MAP 10N34



APPROVED Date 8/5/11
FEDERAL HIGHWAY ADMINISTRATION
Wesley Patrick-Rose
FOR: VINCENT P. MAMMANO
DIVISION ADMINISTRATOR



STATE OF CALIFORNIA
DEPARTMENT OF TRANSPORTATION
In Cooperation with the
FEDERAL HIGHWAY ADMINISTRATION
AND LOCAL AGENCIES



SEE MAP 10N43

SIGN ROUTES
INTERSTATE
U.S.
STATE
COUNTY

FUNCTIONAL CLASSIFICATION SYSTEM
INTERSTATE 1
OTHER FWY OR EXPWY 2
OTHER PRINCIPAL ARTERIAL 3
MINOR ARTERIAL 4
MAJOR COLLECTOR 5
MINOR COLLECTOR 6
LOCAL 7



MAP 10N33

Fresno - Madera CALIFORNIA ROAD SYSTEM

