

BEFORE THE BOARD OF SUPERVISORS
OF THE COUNTY OF FRESNO
STATE OF CALIFORNIA

IN THE MATTER OF THE)	RESOLUTION AMENDING RESOLUTION)
ESTABLISHMENT OF LOCAL)	ESTABLISHING DRAINAGE COSTS AND)
DRAINAGE FEES)	FEES FOR LOCAL DRAINAGE AREAS)
)	AND THE STORM DRAINAGE AND)
)	FLOOD CONTROL MASTER PLAN)

WHEREAS, the Board of Supervisors of the County of Fresno ("County") has enacted Chapter 17.64, Title 17 of the Fresno County Ordinance Code, which Ordinance is hereby incorporated herein by this reference, creating and establishing the authority for imposing and charging fees for the construction of planned local storm drainage facilities pursuant to the adopted Storm Drainage and Flood Control Master Plan; and

WHEREAS, an amended Storm Drainage and Flood Control Master Plan Map (Exhibit "A" hereto) specifying public facilities and improvements, existing and proposed, which are necessary to provide drainage service and flood control within the respective local drainage areas specified therein has been presented to the Board of Supervisors of the County; and

WHEREAS, a study has been conducted of the impacts of contemplated future development on the existing storm drainage services and facilities in the local drainage areas of the Fresno Metropolitan Flood Control District ("District") and the County listed in Exhibit "B" attached hereto, along with an analysis of new, improved or expanded public facilities, the estimated costs of those improvements, and the schedule of per gross-acre fees calculated to raise the sum of money necessary to pay the estimated total cost of local drainage facilities in said local drainage areas; and

WHEREAS, this study was available at the District's office for public inspection and review ten (10) days prior to this public hearing and notice was given in compliance with the requirements therefore, and

WHEREAS, a public hearing was held pursuant to the public notice cited herein at a regularly scheduled meeting of the Board of Supervisors of the County; and

///

1 WHEREAS, the Board of Supervisors of the County finds as follows:

2 A. The purpose of this fee is to finance facilities within the County and District required for
3 the removal of surface and storm water; attributable to development; to obviate the menace to the public
4 health, safety and welfare arising from inadequate provision for removal of surface and storm waters
5 occurring as the result of development of property; to prevent deterioration of property values and
6 impairment of conditions making for desirable residential, commercial or industrial development, as the
7 case may be, which would result from the failure to construct planned local drainage facilities relative to
8 development of property; and to prevent deterioration of public streets and other public facilities which
9 would result from failure to construct planned local drainage facilities concurrently with development.

10 B. The fees collected pursuant to Chapter 17.64, Title 17 of the Fresno County Code and
11 this Resolution shall be used to finance only the public facilities described or identified in Exhibit "A",
12 attached hereto;

13 C. After considering said Map and said study and analysis prepared by the District, entitled
14 "Storm Drainage and Flood Control Master Plan", and that prepared by the Fresno County Department
15 of Public Works and Planning entitled "Fresno County General Plan", and the various Community and
16 Specific Plans; and the information and testimony received at this public hearing, the Board of
17 Supervisors approves said Map and said study, and incorporates such herein. The Board further finds
18 that all development in the subject area will generate the needs, as described in this recital for storm
19 drainage facilities within the impacted area as described in Exhibit "A", and generates an unmet need for
20 storm drainage facilities and services within the impacted area;

21 D. There is a need in this described impact area for storm drainage facilities which have not
22 been constructed or have been constructed, and development will contribute its fair share towards these
23 facility costs through this fee, and said facilities have been called for in, or are consistent with, the
24 County's General Plan;

25 E. The facts and evidence presented establish that there is a reasonable relationship
26 between the need for the described public facilities and the impacts of the types of development as
27 described in Exhibit "A" and Exhibit "B" for which the corresponding fee set forth in Exhibit "B" is charged.
28 There is a reasonable relationship between the fee's use and the development of the lands in the service

1 area for which the fee is charged, as these reasonable relationships or nexuses are described in more
2 detail in the study and Map referred to above;

3 F. The Storm Drainage and Flood Control Master Plan Map attached hereto as Exhibit "A"
4 and the storm drainage fees set forth in Exhibit "B", as adopted by Paragraphs 2 and 3 herein below,
5 revise the Storm Drainage and Flood Control Master Plan, are in conformity with the County's General
6 Plan and are in compliance with Section 66483 of the California Government Code.

7 G. The cost estimates set forth in Exhibit "B" are reasonable cost estimates for constructing
8 these facilities and the fee schedule is predicated on said estimates and is to generate fees by
9 development which will not exceed the total of these costs.

10 NOW, THEREFORE, it is hereby resolved by the Board of Supervisors of the County of Fresno
11 that:

12 1. The above recitals are true and correct, and this Board of Supervisors so finds and
13 determines.

14 2. The Storm Drainage and Flood Control Master Plan is hereby amended to include that
15 Storm Drain and Flood Control Master Plan Map attached hereto as Exhibit "A" as supported by Exhibit
16 "B".

17 3. The schedule of drainage fees for those respective local drainage areas listed in Exhibit
18 "B" hereto is hereby amended as set forth in said Exhibit "B". The District shall prepare and provide to
19 the County a 2018 Schedule of Drainage Fees for each of its local drainage areas, which shall include
20 the amendments adopted hereby. Fees shall be paid in accordance with the Drainage Fee Ordinances
21 according to said 2018 Drainage Fee Schedule.

22 4. The fee shall be solely used to pay: (a) costs related to the design, administration and
23 construction of the described public storm water facilities; (b) for reimbursing the District for the
24 development's fair share of those capital improvements constructed by the District; or (c) to reimburse
25 other developers who have constructed public facilities in each service area where those facilities were
26 beyond that needed to mitigate the impacts of the other developers' project or projects and where
27 reimbursement is provided for under the Drainage Fee Ordinance or the Fresno County Ordinance.

28 ///

1 5. The District, pursuant to Chapter 17.64 of Title 17 of the Fresno County Ordinance Code,
2 shall review the estimated cost of the described capital improvements for which this fee is charged, the
3 continued or expanded need therefore, and the reasonable relationship between such facility needs and
4 the varying types and development. The Manager shall report the findings to the Board of Supervisors
5 and recommend any adjustment to this fee or other action as may be needed.

6 6. Pursuant to California Government Code 66022, any judicial action or proceeding to
7 attack, review, set aside, void or annul this Resolution shall be brought within 120 days of the effective
8 date hereof, which shall be 60 days after the date of adoption hereof. Administrative appeal is mandatory
9 prerequisite to any such judicial action or proceeding. Such appeal shall be made in writing to the Director
10 of the Department of Public Works and Planning of the County of Fresno. Such appeal must be made
11 within 60 days after the effective date hereof. The Director shall set the matter for hearing, conduct the
12 hearing and render a decision within 40 days after such appeal is filed.

13 7. The Ordinances of the County of Fresno has an administrative mechanism whereby a
14 property owner who seeks to develop property within the boundaries of the County and the District can
15 challenge the fees imposed thereunder only by first paying said fees under protest. Developers of
16 property within the District shall adhere to the applicable Ordinance of the County of Fresno under which
17 it is required that drainage fees must be paid before development is allowed, and such fee may be paid
18 under protest.

19 ///

20 ///

21 ///

22 ///

23 ///

24 ///

25 ///

26 ///

27 ///

28 ///

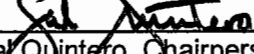
1 THE FOREGOING, was passed and adopted by the following vote of the Board of Supervisors of
2 the County of Fresno this 8th day of May 2018, to wit:

3
4 AYES: Supervisors Borgeas, Magsig, Mendes, Pacheco, Quintero

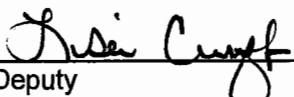
5 NOES: None

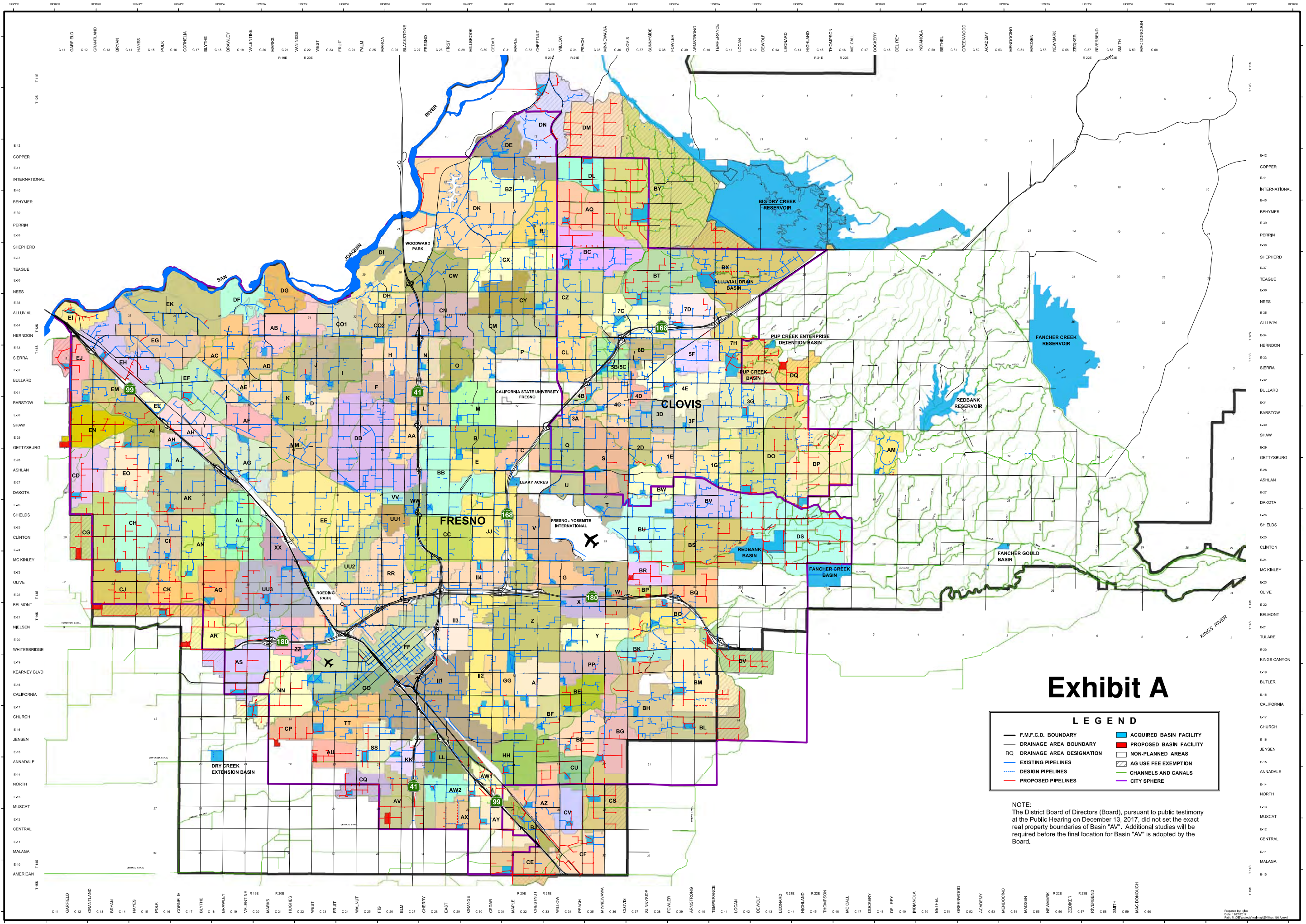
6 ABSENT: None

7 ABSTAINED: None
8
9
10

11 BY 
12 Sal Quintero, Chairperson of the Board of
13 Supervisors of the County of Fresno

14 **ATTEST:**
15 Bernice E. Seidel
16 Clerk of the Board of Supervisors
17 County of Fresno, State of California

18 BY 
19 Deputy
20
21
22
23
24
25
26
27
28



County of Fresno

2018 DRAINAGE FEE SCHEDULE

EFFECTIVE DATE: March 1, 2018

Exhibit "B"

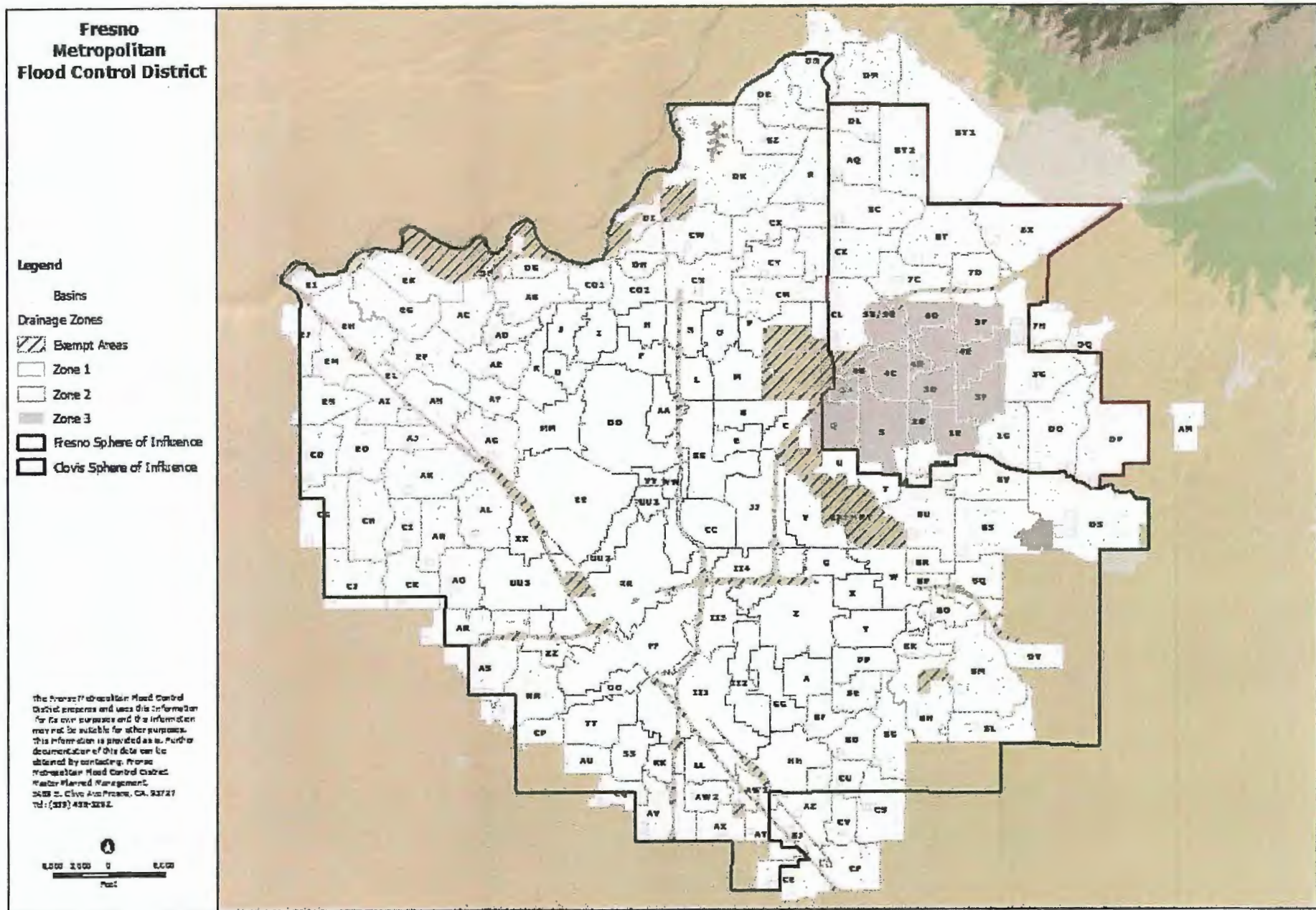
Fresno Metropolitan Flood Control District



2018 DRAINAGE FEE SCHEDULE

Fresno County

Effective Date: 3/1/2018



DRAINAGE FEE SCHEDULE FOR ZONE 1: PLANNED LOCAL DRAINAGE AREAS

Area		AE-5, A-L, D	A1, A2, RR	R-1-E, R-1-EH, R-A	R-1-A, R-1-AH	R-1-B, R-1-C, RE	R-1 40%	R-1 45%	R-1 50%	R-2, M-H	R-3	R-4, T-P	M-1, M-2, M-3, C-R, M-1-P, S-L	C-P, C-M, R-P	C-1, C-2, C-3, C-4, C-5, C-6, C-L, P	Total Cost
R	BASIN	\$1,410	\$1,510	\$2,020	\$2,420	\$2,820	\$3,020	\$3,180	\$3,330	\$3,330	\$3,730	\$4,530	\$6,500	\$7,060	\$7,570	\$2,891,960
	PIPE	\$1,840	\$2,080	\$2,760	\$2,990	\$3,250	\$3,380	\$3,490	\$3,580	\$3,580	\$3,840	\$4,100	\$4,760	\$5,030	\$5,310	\$2,780,680
	TOTAL	\$3,250	\$3,690	\$4,780	\$5,410	\$6,070	\$6,400	\$6,670	\$6,910	\$6,910	\$7,570	\$8,630	\$11,360	\$12,090	\$12,880	\$5,672,640
AB	BASIN	\$870	\$990	\$1,250	\$1,490	\$1,740	\$1,860	\$1,960	\$2,060	\$2,060	\$2,300	\$2,800	\$4,070	\$4,350	\$4,670	\$1,501,130
	PIPE	\$1,030	\$1,170	\$1,550	\$1,680	\$1,830	\$1,900	\$1,960	\$2,010	\$2,010	\$2,160	\$2,300	\$2,670	\$2,830	\$2,980	\$1,470,000
	TOTAL	\$1,900	\$2,160	\$2,800	\$3,170	\$3,570	\$3,760	\$3,920	\$4,070	\$4,070	\$4,460	\$5,100	\$6,740	\$7,180	\$7,650	\$2,971,130
AC	BASIN	\$640	\$730	\$920	\$1,100	\$1,280	\$1,370	\$1,440	\$1,520	\$1,520	\$1,700	\$2,060	\$3,000	\$3,210	\$3,440	\$1,095,117
	PIPE	\$890	\$1,010	\$1,340	\$1,460	\$1,580	\$1,650	\$1,740	\$1,740	\$1,740	\$1,870	\$1,990	\$2,320	\$2,450	\$2,580	\$1,164,819
	TOTAL	\$1,530	\$1,740	\$2,260	\$2,560	\$2,860	\$3,020	\$3,140	\$3,260	\$3,260	\$3,570	\$4,050	\$5,320	\$5,660	\$6,020	\$2,259,936
AD	BASIN	\$990	\$1,130	\$1,420	\$1,700	\$1,990	\$2,130	\$2,240	\$2,340	\$2,340	\$2,620	\$3,190	\$4,640	\$4,970	\$5,330	\$731,166
	PIPE	\$580	\$760	\$1,010	\$1,100	\$1,200	\$1,240	\$1,290	\$1,320	\$1,320	\$1,410	\$1,510	\$1,730	\$1,850	\$1,960	\$442,643
	TOTAL	\$1,670	\$1,890	\$2,430	\$2,800	\$3,190	\$3,370	\$3,530	\$3,660	\$3,660	\$4,030	\$4,700	\$6,390	\$6,820	\$7,290	\$1,173,809
AE	BASIN	\$1,430	\$1,630	\$2,040	\$2,440	\$2,860	\$3,060	\$3,210	\$3,370	\$3,370	\$3,770	\$4,580	\$6,670	\$7,140	\$7,650	\$2,008,950
	PIPE	\$620	\$700	\$940	\$1,020	\$1,100	\$1,150	\$1,180	\$1,220	\$1,220	\$1,300	\$1,390	\$1,610	\$1,710	\$1,800	\$705,970
	TOTAL	\$2,050	\$2,330	\$2,980	\$3,460	\$3,960	\$4,210	\$4,390	\$4,590	\$4,590	\$5,070	\$5,970	\$8,280	\$8,850	\$9,450	\$2,714,920
AF	BASIN	\$650	\$740	\$930	\$1,110	\$1,300	\$1,390	\$1,470	\$1,540	\$1,540	\$1,720	\$2,090	\$3,040	\$3,260	\$3,490	\$1,094,720
	PIPE	\$500	\$570	\$760	\$820	\$890	\$930	\$960	\$980	\$980	\$1,050	\$1,120	\$1,310	\$1,380	\$1,460	\$510,250
	TOTAL	\$1,150	\$1,310	\$1,690	\$1,930	\$2,190	\$2,320	\$2,430	\$2,520	\$2,520	\$2,770	\$3,210	\$4,350	\$4,640	\$4,950	\$1,604,970
AG	BASIN	\$440	\$510	\$630	\$760	\$890	\$950	\$1,000	\$1,050	\$1,050	\$1,170	\$1,420	\$2,070	\$2,220	\$2,380	\$1,235,580
	PIPE	\$1,340	\$1,520	\$2,010	\$2,190	\$2,370	\$2,470	\$2,550	\$2,610	\$2,610	\$2,800	\$2,990	\$3,470	\$3,670	\$3,880	\$2,273,570
	TOTAL	\$1,780	\$2,030	\$2,640	\$2,950	\$3,260	\$3,420	\$3,550	\$3,660	\$3,660	\$3,970	\$4,410	\$5,540	\$5,890	\$6,260	\$3,510,150
AH	BASIN	\$1,100	\$1,260	\$1,580	\$1,880	\$2,200	\$2,360	\$2,480	\$2,600	\$2,600	\$2,910	\$3,540	\$5,140	\$5,510	\$5,900	\$3,479,440
	PIPE	\$2,060	\$2,320	\$3,080	\$3,350	\$3,640	\$3,780	\$3,910	\$4,010	\$4,010	\$4,300	\$4,590	\$5,330	\$5,630	\$5,940	\$3,742,290
	TOTAL	\$3,160	\$3,580	\$4,660	\$5,230	\$5,840	\$6,140	\$6,390	\$6,610	\$6,610	\$7,210	\$8,130	\$10,470	\$11,140	\$11,840	\$7,221,730
AI	BASIN	\$1,440	\$1,650	\$2,060	\$2,470	\$2,890	\$3,090	\$3,250	\$3,410	\$3,410	\$3,810	\$4,630	\$6,740	\$7,220	\$7,740	\$2,336,450
	PIPE	\$2,570	\$2,900	\$3,860	\$4,190	\$4,550	\$4,730	\$4,880	\$5,010	\$5,010	\$5,370	\$5,730	\$6,660	\$7,040	\$7,430	\$2,734,830
	TOTAL	\$4,010	\$4,550	\$5,920	\$6,660	\$7,440	\$7,820	\$8,130	\$8,420	\$8,420	\$9,180	\$10,360	\$13,400	\$14,260	\$15,170	\$5,071,280
AJ	BASIN	\$1,490	\$1,690	\$2,130	\$2,540	\$2,970	\$3,180	\$3,340	\$3,510	\$3,510	\$3,920	\$4,770	\$6,940	\$7,430	\$7,970	\$1,344,160
	PIPE	\$590	\$670	\$880	\$960	\$1,040	\$1,090	\$1,120	\$1,150	\$1,150	\$1,230	\$1,320	\$1,530	\$1,620	\$1,700	\$433,080
	TOTAL	\$2,080	\$2,360	\$3,010	\$3,500	\$4,010	\$4,270	\$4,460	\$4,660	\$4,660	\$5,150	\$6,090	\$8,470	\$9,050	\$9,670	\$1,777,240
AK	BASIN	\$760	\$870	\$1,090	\$1,310	\$1,530	\$1,640	\$1,720	\$1,800	\$1,800	\$2,020	\$2,450	\$3,570	\$3,820	\$4,100	\$2,329,830
	PIPE	\$1,820	\$2,060	\$2,730	\$2,970	\$3,220	\$3,350	\$3,460	\$3,550	\$3,550	\$3,800	\$4,060	\$4,710	\$4,990	\$5,260	\$4,133,220
	TOTAL	\$2,580	\$2,930	\$3,820	\$4,280	\$4,750	\$4,990	\$5,180	\$5,350	\$5,350	\$5,820	\$6,510	\$8,280	\$8,810	\$9,360	\$6,463,050
AL	BASIN	\$880	\$1,000	\$1,250	\$1,500	\$1,750	\$1,870	\$1,970	\$2,070	\$2,070	\$2,310	\$2,810	\$4,090	\$4,380	\$4,690	\$2,139,050
	PIPE	\$1,880	\$2,120	\$2,820	\$3,060	\$3,320	\$3,460	\$3,570	\$3,660	\$3,660	\$3,920	\$4,190	\$4,860	\$5,150	\$5,430	\$3,514,500
	TOTAL	\$2,760	\$3,120	\$4,070	\$4,560	\$5,070	\$5,330	\$5,540	\$5,730	\$5,730	\$6,230	\$7,000	\$8,950	\$9,530	\$10,120	\$5,653,550
AM	BASIN	\$2,370	\$2,370	\$2,970	\$3,550	\$4,150	\$4,450	\$4,670	\$4,900	\$4,900	\$5,480	\$6,670	\$9,700	\$10,390	\$11,130	\$1,260,966
	PIPE	\$5,950	\$5,950	\$7,900	\$8,590	\$9,330	\$9,700	\$10,010	\$10,280	\$10,280	\$11,010	\$11,750	\$13,650	\$14,440	\$15,230	\$2,886,860
	TOTAL	\$8,320	\$8,320	\$10,870	\$12,140	\$13,480	\$14,150	\$14,680	\$15,180	\$15,180	\$16,490	\$18,420	\$23,350	\$24,830	\$26,360	\$4,147,826

DRAINAGE FEE SCHEDULE FOR ZONE 1: PLANNED LOCAL DRAINAGE AREAS

		AE-5, A-1, O	A1, A2, RR	R-1-E, R-1-EH, R-A	R-1-A, R-1-AH	R-1-B, R-1-C, RE	R-1 40%	R-1 45%	R-1 50%	R-2, M-H	R-3	R-4, T-P	M-1, M-2, M-3, C-R, M-1-P, S-L	C-P, C-M, R-P	C-1, C-2, C-3, C-4, C-5, C-6, C-L, P	Total Cost
Area																
AN	BASIN	\$1,340	\$1,520	\$1,910	\$2,290	\$2,670	\$2,860	\$3,010	\$3,150	\$3,150	\$3,530	\$4,290	\$6,240	\$6,680	\$7,170	\$1,888,310
	PIPE	\$1,710	\$1,940	\$2,570	\$2,790	\$3,030	\$3,150	\$3,250	\$3,340	\$3,340	\$3,580	\$3,820	\$4,440	\$4,690	\$4,950	\$2,040,880
	TOTAL	\$3,050	\$3,460	\$4,480	\$5,080	\$5,700	\$6,010	\$6,260	\$6,490	\$6,490	\$7,110	\$8,110	\$10,680	\$11,370	\$12,120	\$3,929,190
AO	BASIN	\$1,330	\$1,510	\$1,900	\$2,270	\$2,650	\$2,840	\$2,980	\$3,130	\$3,130	\$3,500	\$4,260	\$6,190	\$6,630	\$7,110	\$2,387,070
	PIPE	\$3,070	\$3,470	\$4,600	\$5,000	\$5,430	\$5,640	\$5,830	\$5,980	\$5,980	\$6,410	\$6,840	\$7,940	\$8,400	\$8,860	\$4,133,060
	TOTAL	\$4,400	\$4,980	\$6,500	\$7,270	\$8,080	\$8,480	\$8,810	\$9,110	\$9,110	\$9,910	\$11,100	\$14,130	\$15,030	\$15,970	\$6,520,130
AQ	BASIN	\$1,750	\$1,750	\$2,200	\$2,630	\$3,070	\$3,290	\$3,450	\$3,620	\$3,620	\$4,050	\$4,930	\$7,170	\$7,680	\$8,230	\$2,482,069
	PIPE	\$3,670	\$3,670	\$4,870	\$5,300	\$5,750	\$5,980	\$6,170	\$6,340	\$6,340	\$6,790	\$7,240	\$8,410	\$8,900	\$9,350	\$4,414,462
	TOTAL	\$5,420	\$5,420	\$7,070	\$7,930	\$8,820	\$9,270	\$9,620	\$9,960	\$9,960	\$10,840	\$12,170	\$15,580	\$16,580	\$17,620	\$6,896,531
AR	BASIN	\$1,370	\$1,560	\$1,960	\$2,340	\$2,740	\$2,930	\$3,080	\$3,230	\$3,230	\$3,620	\$4,400	\$6,400	\$6,850	\$7,340	\$2,806,570
	PIPE	\$3,820	\$4,320	\$5,730	\$6,220	\$6,760	\$7,030	\$7,260	\$7,450	\$7,450	\$7,980	\$8,520	\$9,890	\$10,460	\$11,040	\$4,646,790
	TOTAL	\$5,190	\$5,880	\$7,690	\$8,560	\$9,500	\$9,960	\$10,340	\$10,680	\$10,680	\$11,600	\$12,920	\$16,290	\$17,310	\$18,380	\$7,653,360
AS	BASIN	\$1,080	\$1,230	\$1,540	\$1,850	\$2,160	\$2,310	\$2,430	\$2,550	\$2,550	\$2,850	\$3,470	\$5,040	\$5,400	\$5,790	\$3,376,140
	PIPE	\$3,260	\$3,690	\$4,890	\$5,320	\$5,770	\$6,000	\$6,200	\$6,360	\$6,360	\$6,820	\$7,270	\$8,450	\$8,940	\$9,430	\$7,213,740
	TOTAL	\$4,340	\$4,920	\$6,430	\$7,170	\$7,930	\$8,310	\$8,630	\$8,910	\$8,910	\$9,670	\$10,740	\$13,490	\$14,340	\$15,220	\$10,589,880
AU	BASIN	\$2,820	\$3,210	\$4,030	\$4,820	\$5,640	\$6,040	\$6,350	\$6,660	\$6,660	\$7,450	\$9,050	\$13,170	\$14,100	\$15,120	\$2,440,610
	PIPE	\$2,760	\$3,120	\$4,140	\$4,500	\$4,890	\$5,080	\$5,250	\$5,390	\$5,390	\$5,770	\$6,160	\$7,150	\$7,570	\$7,980	\$1,956,500
	TOTAL	\$5,580	\$6,330	\$8,170	\$9,320	\$10,530	\$11,120	\$11,600	\$12,050	\$12,050	\$13,220	\$15,210	\$20,320	\$21,670	\$23,100	\$4,397,110
AV	BASIN	\$1,060	\$1,210	\$1,510	\$1,810	\$2,110	\$2,260	\$2,380	\$2,500	\$2,500	\$2,790	\$3,390	\$4,940	\$5,290	\$5,670	\$3,574,160
	PIPE	\$4,350	\$4,910	\$6,520	\$7,090	\$7,700	\$8,000	\$8,260	\$8,480	\$8,480	\$9,090	\$9,700	\$11,260	\$11,910	\$12,570	\$8,325,130
	TOTAL	\$5,410	\$6,120	\$8,030	\$8,900	\$9,810	\$10,260	\$10,640	\$10,980	\$10,980	\$11,880	\$13,090	\$16,200	\$17,200	\$18,240	\$11,899,290
AW1	BASIN	\$950	\$1,090	\$1,360	\$1,630	\$1,910	\$2,040	\$2,150	\$2,250	\$2,250	\$2,520	\$3,060	\$4,450	\$4,770	\$5,110	\$1,403,090
	PIPE	\$4,850	\$5,480	\$7,270	\$7,900	\$8,580	\$8,920	\$9,210	\$9,450	\$9,450	\$10,130	\$10,810	\$12,550	\$13,280	\$14,010	\$3,954,090
	TOTAL	\$5,800	\$6,570	\$8,630	\$9,530	\$10,490	\$10,960	\$11,360	\$11,700	\$11,700	\$12,650	\$13,870	\$17,000	\$18,050	\$19,120	\$5,357,180
AW2	BASIN	\$720	\$830	\$1,040	\$1,240	\$1,450	\$1,550	\$1,630	\$1,710	\$1,710	\$1,910	\$2,320	\$3,380	\$3,620	\$3,880	\$1,124,260
	PIPE	\$990	\$1,120	\$1,480	\$1,610	\$1,750	\$1,820	\$1,880	\$1,930	\$1,930	\$2,060	\$2,200	\$2,560	\$2,710	\$2,860	\$850,940
	TOTAL	\$1,710	\$1,950	\$2,520	\$2,850	\$3,200	\$3,370	\$3,510	\$3,640	\$3,640	\$3,970	\$4,520	\$5,940	\$6,330	\$6,740	\$1,975,200
AX	BASIN	\$1,290	\$1,470	\$1,850	\$2,210	\$2,590	\$2,770	\$2,910	\$3,050	\$3,050	\$3,420	\$4,150	\$6,040	\$6,470	\$6,930	\$2,047,230
	PIPE	\$2,220	\$2,510	\$3,330	\$3,620	\$3,930	\$4,080	\$4,220	\$4,330	\$4,330	\$4,640	\$4,950	\$5,750	\$6,080	\$6,410	\$1,947,650
	TOTAL	\$3,510	\$3,980	\$5,180	\$5,830	\$6,520	\$6,850	\$7,130	\$7,380	\$7,380	\$8,060	\$9,100	\$11,790	\$12,550	\$13,340	\$3,994,880
AY	BASIN	\$1,440	\$1,640	\$2,060	\$2,460	\$2,880	\$3,080	\$3,240	\$3,400	\$3,400	\$3,800	\$4,620	\$6,730	\$7,200	\$7,720	\$2,626,250
	PIPE	\$1,870	\$2,110	\$2,800	\$3,040	\$3,300	\$3,430	\$3,540	\$3,640	\$3,640	\$3,900	\$4,160	\$4,830	\$5,110	\$5,390	\$1,885,870
	TOTAL	\$3,310	\$3,750	\$4,860	\$5,500	\$6,180	\$6,510	\$6,780	\$7,040	\$7,040	\$7,700	\$8,780	\$11,560	\$12,310	\$13,110	\$4,512,120
AZ	BASIN	\$470	\$530	\$670	\$800	\$930	\$1,000	\$1,050	\$1,100	\$1,100	\$1,230	\$1,500	\$2,180	\$2,330	\$2,500	\$1,246,020
	PIPE	\$1,740	\$1,960	\$2,610	\$2,830	\$3,080	\$3,200	\$3,300	\$3,390	\$3,390	\$3,630	\$4,500	\$6,760	\$7,090	\$7,520	\$2,699,370
	TOTAL	\$2,210	\$2,490	\$3,280	\$3,630	\$4,010	\$4,200	\$4,350	\$4,490	\$4,490	\$4,860	\$5,370	\$6,680	\$7,090	\$7,520	\$3,945,390
BC	BASIN	\$1,610	\$1,830	\$2,300	\$2,750	\$3,220	\$3,440	\$3,620	\$3,800	\$3,800	\$4,250	\$5,170	\$7,520	\$8,050	\$8,630	\$4,386,809
	PIPE	\$2,620	\$2,960	\$3,930	\$4,270	\$4,630	\$4,820	\$4,970	\$5,100	\$5,100	\$5,470	\$5,840	\$6,780	\$7,170	\$7,570	\$5,620,988
	TOTAL	\$4,230	\$4,790	\$6,230	\$7,020	\$7,850	\$8,260	\$8,590	\$8,900	\$8,900	\$9,720	\$11,010	\$14,300	\$15,220	\$16,200	\$10,007,797

DRAINAGE FEE SCHEDULE FOR ZONE 1: PLANNED LOCAL DRAINAGE AREAS

Area		AE-5, A-1, O	A1, A2, RR	R-1-E, R-1-EH, R-A	R-1-A, R-1-AH	R-1-B, R-1-C, RE	R-1 40%	R-1 45%	R-1 50%	R-2, M-H	R-3	R-4, T-P	M-1, M-2, M-3, C-R, M-1-P, S-L	C-P, C-M, R-P	C-1, C-2, C-3, C-4, C-5, C-6, C-L, P	Total Cost
BD	BASIN	\$1,110	\$1,260	\$1,590	\$1,900	\$2,220	\$2,370	\$2,500	\$2,620	\$2,620	\$2,930	\$3,560	\$5,180	\$5,550	\$5,950	\$1,840,680
	PIPE	\$2,120	\$2,400	\$3,180	\$3,460	\$3,750	\$3,900	\$4,030	\$4,130	\$4,130	\$4,430	\$4,730	\$5,490	\$5,810	\$6,130	\$2,357,880
	TOTAL	\$3,230	\$3,660	\$4,770	\$5,360	\$5,970	\$6,270	\$6,530	\$6,750	\$6,750	\$7,360	\$8,290	\$10,670	\$11,360	\$12,080	\$4,198,560
BE	BASIN	\$1,180	\$1,350	\$1,690	\$2,030	\$2,370	\$2,540	\$2,670	\$2,800	\$2,800	\$3,130	\$3,800	\$5,530	\$5,920	\$6,350	\$1,085,590
	PIPE	\$1,590	\$1,790	\$2,380	\$2,580	\$2,810	\$2,920	\$3,010	\$3,090	\$3,090	\$3,310	\$3,540	\$4,110	\$4,340	\$4,580	\$1,244,830
	TOTAL	\$2,770	\$3,140	\$4,070	\$4,610	\$5,180	\$5,460	\$5,680	\$5,890	\$5,890	\$6,440	\$7,340	\$9,640	\$10,260	\$10,930	\$2,330,420
BF	BASIN	\$1,650	\$1,880	\$2,350	\$2,810	\$3,290	\$3,520	\$3,700	\$3,880	\$3,880	\$4,340	\$5,280	\$7,660	\$8,230	\$8,820	\$1,418,810
	PIPE	\$1,120	\$1,260	\$1,680	\$1,820	\$1,980	\$2,060	\$2,130	\$2,180	\$2,180	\$2,340	\$2,500	\$2,900	\$3,070	\$3,230	\$784,970
	TOTAL	\$2,770	\$3,140	\$4,030	\$4,630	\$5,270	\$5,580	\$5,830	\$6,060	\$6,060	\$6,680	\$7,780	\$10,580	\$11,300	\$12,050	\$2,203,780
BG	BASIN	\$1,430	\$1,630	\$2,040	\$2,440	\$2,850	\$3,050	\$3,210	\$3,360	\$3,360	\$3,760	\$4,580	\$6,660	\$7,130	\$7,640	\$3,294,140
	PIPE	\$2,440	\$2,750	\$3,650	\$3,970	\$4,310	\$4,480	\$4,630	\$4,750	\$4,750	\$5,090	\$5,430	\$6,310	\$6,680	\$7,040	\$3,795,220
	TOTAL	\$3,870	\$4,380	\$5,690	\$6,410	\$7,160	\$7,530	\$7,840	\$8,110	\$8,110	\$8,850	\$10,010	\$12,970	\$13,810	\$14,680	\$7,089,360
BH	BASIN	\$890	\$1,010	\$1,270	\$1,510	\$1,770	\$1,890	\$1,990	\$2,090	\$2,090	\$2,340	\$2,840	\$4,130	\$4,430	\$4,740	\$1,751,900
	PIPE	\$3,010	\$3,400	\$4,510	\$4,910	\$5,330	\$5,540	\$5,720	\$5,870	\$5,870	\$6,290	\$6,710	\$7,800	\$8,250	\$8,700	\$5,266,000
	TOTAL	\$3,900	\$4,410	\$5,780	\$6,420	\$7,100	\$7,430	\$7,710	\$7,960	\$7,960	\$8,630	\$9,550	\$11,930	\$12,680	\$13,440	\$7,017,900
BJ	BASIN	\$690	\$780	\$980	\$1,180	\$1,380	\$1,470	\$1,550	\$1,620	\$1,620	\$1,820	\$2,210	\$3,210	\$3,440	\$3,690	\$856,090
	PIPE	\$2,250	\$2,540	\$3,370	\$3,670	\$3,980	\$4,140	\$4,270	\$4,390	\$4,390	\$4,700	\$5,020	\$5,830	\$6,160	\$6,500	\$1,548,230
	TOTAL	\$2,940	\$3,320	\$4,350	\$4,850	\$5,360	\$5,610	\$5,820	\$6,010	\$6,010	\$6,520	\$7,230	\$9,040	\$9,600	\$10,190	\$2,404,320
BK	BASIN	\$1,700	\$1,940	\$2,430	\$2,910	\$3,410	\$3,640	\$3,830	\$4,020	\$4,020	\$4,490	\$5,470	\$7,950	\$8,510	\$9,130	\$1,735,600
	PIPE	\$2,000	\$2,260	\$3,000	\$3,250	\$3,530	\$3,670	\$3,790	\$3,890	\$3,890	\$4,170	\$4,450	\$5,170	\$5,470	\$5,770	\$1,296,270
	TOTAL	\$3,700	\$4,200	\$5,430	\$6,160	\$6,940	\$7,310	\$7,620	\$7,910	\$7,910	\$8,660	\$9,920	\$13,120	\$13,980	\$14,900	\$3,031,870
BL	BASIN	\$1,320	\$1,510	\$1,890	\$2,260	\$2,650	\$2,830	\$2,980	\$3,130	\$3,130	\$3,500	\$4,250	\$6,190	\$6,620	\$7,100	\$3,719,340
	PIPE	\$3,220	\$3,640	\$4,830	\$5,240	\$5,700	\$5,920	\$6,110	\$6,270	\$6,270	\$6,720	\$7,180	\$8,330	\$8,820	\$9,300	\$5,776,030
	TOTAL	\$4,540	\$5,150	\$6,720	\$7,500	\$8,350	\$8,750	\$9,090	\$9,400	\$9,400	\$10,220	\$11,430	\$14,520	\$15,440	\$16,400	\$9,495,370
BM	BASIN	\$650	\$740	\$930	\$1,110	\$1,300	\$1,390	\$1,460	\$1,540	\$1,540	\$1,720	\$2,090	\$3,040	\$3,250	\$3,490	\$2,652,540
	PIPE	\$3,310	\$3,740	\$4,970	\$5,400	\$5,860	\$6,090	\$6,290	\$6,460	\$6,460	\$6,920	\$7,380	\$8,580	\$9,070	\$9,570	\$9,969,040
	TOTAL	\$3,960	\$4,480	\$5,900	\$6,510	\$7,160	\$7,480	\$7,750	\$8,000	\$8,000	\$8,640	\$9,470	\$11,620	\$12,320	\$13,060	\$12,621,580
BO	BASIN	\$1,090	\$1,250	\$1,560	\$1,870	\$2,190	\$2,340	\$2,460	\$2,580	\$2,580	\$2,890	\$3,510	\$5,110	\$5,470	\$5,870	\$1,016,954
	PIPE	\$2,220	\$2,510	\$3,330	\$3,620	\$3,930	\$4,090	\$4,220	\$4,330	\$4,330	\$4,640	\$4,950	\$5,750	\$6,090	\$6,420	\$1,588,183
	TOTAL	\$3,310	\$3,760	\$4,890	\$5,490	\$6,120	\$6,430	\$6,680	\$6,910	\$6,910	\$7,530	\$8,460	\$10,860	\$11,560	\$12,290	\$2,605,137
BP	BASIN	\$2,650	\$3,020	\$3,790	\$4,530	\$5,300	\$5,670	\$5,970	\$6,260	\$6,260	\$7,000	\$8,510	\$12,380	\$13,260	\$14,210	\$1,740,120
	PIPE	\$2,690	\$3,040	\$4,040	\$4,390	\$4,760	\$4,950	\$5,110	\$5,250	\$5,250	\$5,630	\$6,000	\$6,970	\$7,380	\$7,780	\$979,880
	TOTAL	\$5,340	\$6,060	\$7,830	\$8,920	\$10,060	\$10,620	\$11,080	\$11,510	\$11,510	\$12,630	\$14,510	\$19,350	\$20,640	\$21,990	\$2,720,000
BQ	BASIN	\$1,110	\$1,260	\$1,580	\$1,890	\$2,220	\$2,370	\$2,490	\$2,610	\$2,610	\$2,920	\$3,560	\$5,170	\$5,540	\$5,940	\$2,168,110
	PIPE	\$2,850	\$3,220	\$4,280	\$4,650	\$5,050	\$5,240	\$5,420	\$5,560	\$5,560	\$5,960	\$6,360	\$7,380	\$7,810	\$8,240	\$3,562,850
	TOTAL	\$3,960	\$4,480	\$5,860	\$6,540	\$7,270	\$7,610	\$7,910	\$8,170	\$8,170	\$8,880	\$9,920	\$12,550	\$13,350	\$14,180	\$5,730,960
BR	BASIN	\$1,740	\$1,980	\$2,480	\$2,970	\$3,470	\$3,720	\$3,910	\$4,100	\$4,100	\$4,580	\$5,570	\$8,110	\$8,680	\$9,310	\$2,214,270
	PIPE	\$2,350	\$2,650	\$3,520	\$3,820	\$4,150	\$4,320	\$4,460	\$4,570	\$4,570	\$4,900	\$5,230	\$6,080	\$6,430	\$6,780	\$1,659,050
	TOTAL	\$4,090	\$4,630	\$6,000	\$6,790	\$7,620	\$8,040	\$8,370	\$8,670	\$8,670	\$9,480	\$10,800	\$14,190	\$15,110	\$16,090	\$3,873,320

DRAINAGE FEE SCHEDULE FOR ZONE 1: PLANNED LOCAL DRAINAGE AREAS

Area		AE-5, A-L, O	A1, A2, RR	R-1-E, R-1-EH, R-A	R-1-A, R-1-AH	R-1-B, R-1-C, RE	R-1 40%	R-1 45%	R-1 50%	R-2, M-H	R-3	R-4, T-P	M-1, M-2, M-3, C-R, M-1-P, S-L	C-P, C-M, R-P	C-1, C-2, C-3, C-4, C-5, C-6, C-L, P	Total Cost
BS	BASIN	\$1,230	\$1,400	\$1,760	\$2,100	\$2,460	\$2,630	\$2,770	\$2,910	\$2,910	\$3,250	\$3,950	\$5,750	\$6,150	\$6,600	\$3,736,510
	PIPE	\$3,990	\$4,510	\$5,990	\$6,510	\$7,070	\$7,350	\$7,590	\$7,790	\$7,790	\$8,350	\$8,900	\$10,340	\$10,940	\$11,540	\$8,884,650
	TOTAL	\$5,220	\$5,910	\$7,750	\$8,610	\$9,530	\$9,980	\$10,360	\$10,700	\$10,700	\$11,600	\$12,850	\$16,090	\$17,090	\$18,140	\$12,621,160
BT	BASIN	\$1,910	\$2,180	\$2,740	\$3,270	\$3,830	\$4,090	\$4,300	\$4,510	\$4,510	\$5,090	\$6,140	\$8,930	\$9,570	\$10,250	\$4,020,360
	PIPE	\$3,400	\$3,840	\$5,100	\$5,540	\$6,010	\$6,250	\$6,460	\$6,630	\$6,630	\$7,100	\$7,580	\$8,800	\$9,310	\$9,820	\$6,300,720
	TOTAL	\$5,310	\$6,020	\$7,840	\$8,810	\$9,840	\$10,340	\$10,760	\$11,140	\$11,140	\$12,150	\$13,720	\$17,730	\$18,880	\$20,070	\$10,321,080
BU	BASIN	\$400	\$450	\$570	\$680	\$800	\$850	\$900	\$940	\$940	\$1,050	\$1,280	\$1,860	\$1,990	\$2,130	\$1,790,200
	PIPE	\$1,380	\$1,560	\$2,080	\$2,260	\$2,450	\$2,550	\$2,630	\$2,700	\$2,700	\$2,890	\$3,090	\$3,580	\$3,790	\$4,000	\$3,647,720
	TOTAL	\$1,780	\$2,010	\$2,650	\$2,940	\$3,250	\$3,400	\$3,530	\$3,640	\$3,640	\$3,940	\$4,370	\$5,440	\$5,780	\$6,130	\$5,437,920
BV	BASIN	\$750	\$850	\$1,070	\$1,280	\$1,490	\$1,600	\$1,680	\$1,760	\$1,760	\$1,970	\$2,400	\$3,490	\$3,730	\$4,000	\$999,921
	PIPE	\$2,440	\$2,760	\$3,670	\$3,980	\$4,330	\$4,500	\$4,640	\$4,760	\$4,760	\$5,110	\$5,450	\$6,330	\$6,700	\$7,060	\$2,807,417
	TOTAL	\$3,190	\$3,610	\$4,740	\$5,260	\$5,820	\$6,100	\$6,320	\$6,520	\$6,520	\$7,080	\$7,850	\$9,820	\$10,430	\$11,060	\$3,807,338
BW	BASIN	\$970	\$1,110	\$1,390	\$1,660	\$1,940	\$2,080	\$2,190	\$2,300	\$2,300	\$2,570	\$3,120	\$4,540	\$4,860	\$5,210	\$1,211,930
	PIPE	\$1,090	\$1,240	\$1,640	\$1,780	\$1,940	\$2,010	\$2,080	\$2,130	\$2,130	\$2,290	\$2,440	\$2,830	\$3,000	\$3,160	\$1,082,900
	TOTAL	\$2,060	\$2,350	\$3,030	\$3,440	\$3,880	\$4,090	\$4,270	\$4,430	\$4,430	\$4,860	\$5,560	\$7,370	\$7,860	\$8,370	\$2,294,830
BX	BASIN	\$2,130	\$2,130	\$2,670	\$3,200	\$3,740	\$4,000	\$4,210	\$4,410	\$4,410	\$4,930	\$6,000	\$8,730	\$9,350	\$10,020	\$7,690,715
	PIPE	\$2,660	\$2,660	\$3,530	\$3,840	\$4,160	\$4,330	\$4,470	\$4,590	\$4,590	\$4,920	\$5,250	\$6,090	\$6,450	\$6,800	\$8,068,477
	TOTAL	\$4,790	\$4,790	\$6,200	\$7,040	\$7,900	\$8,330	\$8,680	\$9,000	\$9,000	\$9,850	\$11,250	\$14,820	\$15,800	\$16,820	\$15,759,192
*Note: A surcharge fee is in effect in addition to the rates per Board Resolution No. 2008-590 adopted December 17, 2008.																
BY1	BASIN	\$840	\$960	\$1,200	\$1,440	\$1,680	\$1,800	\$1,890	\$1,980	\$1,980	\$2,220	\$2,690	\$3,920	\$4,200	\$4,500	\$2,309,150
	PIPE	\$580	\$660	\$880	\$950	\$1,030	\$1,070	\$1,110	\$1,140	\$1,140	\$1,220	\$1,300	\$1,510	\$1,600	\$1,690	\$1,581,240
	TOTAL	\$1,420	\$1,620	\$2,080	\$2,390	\$2,710	\$2,870	\$3,000	\$3,120	\$3,120	\$3,440	\$3,990	\$5,430	\$5,800	\$6,190	\$3,890,390
BY2	BASIN	\$1,540	\$1,760	\$2,210	\$2,640	\$3,080	\$3,300	\$3,470	\$3,640	\$3,640	\$4,070	\$4,950	\$7,200	\$7,710	\$8,270	\$3,650,760
	PIPE	\$4,150	\$4,690	\$6,220	\$6,760	\$7,340	\$7,630	\$7,880	\$8,090	\$8,090	\$8,670	\$9,250	\$10,740	\$11,360	\$11,980	\$8,193,890
	TOTAL	\$5,690	\$6,450	\$8,430	\$9,400	\$10,420	\$10,930	\$11,350	\$11,730	\$11,730	\$12,740	\$14,200	\$17,940	\$19,070	\$20,250	\$11,844,650
BZ	BASIN	\$1,840	\$2,100	\$2,640	\$3,150	\$3,690	\$3,940	\$4,150	\$4,350	\$4,350	\$4,870	\$5,920	\$8,610	\$9,220	\$9,880	\$2,324,242
	PIPE	\$2,630	\$2,970	\$3,950	\$4,290	\$4,660	\$4,840	\$5,000	\$5,130	\$5,130	\$5,500	\$5,870	\$6,820	\$7,210	\$7,610	\$2,834,949
	TOTAL	\$4,470	\$5,070	\$6,590	\$7,440	\$8,350	\$8,780	\$9,150	\$9,480	\$9,480	\$10,370	\$11,790	\$15,430	\$16,430	\$17,490	\$5,159,191
CD	BASIN	\$1,650	\$1,880	\$2,360	\$2,820	\$3,300	\$3,530	\$3,710	\$3,890	\$3,890	\$4,350	\$5,290	\$7,700	\$8,250	\$8,840	\$2,577,780
	PIPE	\$3,190	\$3,610	\$4,790	\$5,200	\$5,650	\$5,870	\$6,060	\$6,220	\$6,220	\$6,670	\$7,120	\$8,270	\$8,750	\$9,220	\$3,848,000
	TOTAL	\$4,840	\$5,490	\$7,150	\$8,020	\$8,950	\$9,400	\$9,770	\$10,110	\$10,110	\$11,020	\$12,410	\$15,970	\$17,000	\$18,060	\$6,425,780
CE	BASIN	\$960	\$1,090	\$1,370	\$1,640	\$1,920	\$2,050	\$2,160	\$2,270	\$2,270	\$2,530	\$3,080	\$4,480	\$4,800	\$5,140	\$2,837,320
	PIPE	\$3,780	\$4,270	\$5,660	\$6,150	\$6,680	\$6,950	\$7,170	\$7,360	\$7,360	\$7,890	\$8,420	\$9,780	\$10,350	\$10,910	\$6,190,690
	TOTAL	\$4,740	\$5,360	\$7,030	\$7,790	\$8,600	\$9,000	\$9,330	\$9,630	\$9,630	\$10,420	\$11,500	\$14,260	\$15,150	\$16,050	\$9,028,010
CF	BASIN	\$680	\$780	\$970	\$1,160	\$1,360	\$1,460	\$1,530	\$1,600	\$1,600	\$1,800	\$2,180	\$3,180	\$3,400	\$3,650	\$2,094,540
	PIPE	\$3,630	\$4,110	\$5,450	\$5,920	\$6,430	\$6,690	\$6,900	\$7,090	\$7,090	\$7,590	\$8,100	\$9,410	\$9,960	\$10,500	\$6,207,040
	TOTAL	\$4,310	\$4,890	\$6,420	\$7,080	\$7,790	\$8,150	\$8,430	\$8,690	\$8,690	\$9,390	\$10,280	\$12,590	\$13,360	\$14,150	\$8,301,580
CG	BASIN	\$2,020	\$2,310	\$2,890	\$3,460	\$4,050	\$4,330	\$4,550	\$4,770	\$4,770	\$5,340	\$6,490	\$9,450	\$10,120	\$10,840	\$3,819,720
	PIPE	\$3,420	\$3,860	\$5,130	\$5,570	\$6,050	\$6,290	\$6,500	\$6,670	\$6,670	\$7,150	\$7,630	\$8,860	\$9,370	\$9,880	\$5,396,070
	TOTAL	\$5,440	\$6,170	\$8,020	\$9,030	\$10,100	\$10,620	\$11,050	\$11,440	\$11,440	\$12,490	\$14,120	\$18,310	\$19,490	\$20,720	\$9,215,790

DRAINAGE FEE SCHEDULE FOR ZONE 1: PLANNED LOCAL DRAINAGE AREAS

Area		AE-5, A-L, O	A1, A2, RR	R-1-E, R-1-EH, R-A	R-1-A, R-1-AH	R-1-B, R-1-C, RE	R-1 40%	R-1 45%	R-1 50%	R-2, M-H	R-3	R-4, T-P	M-1, M-2, M-3, C-R, M-1-P, S-L	C-P, C-M, R-P	C-1, C-2, C-3, C-4, C-5, C-6, C-L, P	Total Cost
CH	BASIN	\$1,420	\$1,620	\$2,030	\$2,430	\$2,840	\$3,040	\$3,200	\$3,390	\$3,350	\$3,750	\$4,560	\$6,640	\$7,110	\$7,620	\$2,756,970
	PIPE	\$4,230	\$4,780	\$6,350	\$6,900	\$7,490	\$7,780	\$8,040	\$8,250	\$8,250	\$8,840	\$9,430	\$10,960	\$11,590	\$12,230	\$6,890,680
	TOTAL	\$5,650	\$6,400	\$8,380	\$9,330	\$10,330	\$10,820	\$11,240	\$11,600	\$11,600	\$12,590	\$13,990	\$17,600	\$18,700	\$19,850	\$9,647,650
CI	BASIN	\$1,460	\$1,660	\$2,080	\$2,490	\$2,910	\$3,120	\$3,280	\$3,440	\$3,440	\$3,850	\$4,680	\$6,810	\$7,290	\$7,810	\$1,428,100
	PIPE	\$2,990	\$3,380	\$4,490	\$4,870	\$5,290	\$5,500	\$5,680	\$5,830	\$5,830	\$6,250	\$6,670	\$7,740	\$8,190	\$8,640	\$2,444,720
	TOTAL	\$4,450	\$5,040	\$6,570	\$7,360	\$8,200	\$8,620	\$8,960	\$9,270	\$9,270	\$10,100	\$11,350	\$14,550	\$15,480	\$16,450	\$3,872,820
CJ	BASIN	\$2,130	\$2,420	\$3,040	\$3,640	\$4,250	\$4,550	\$4,790	\$5,020	\$5,020	\$5,610	\$6,830	\$9,930	\$10,630	\$11,400	\$4,046,710
	PIPE	\$3,100	\$3,510	\$4,660	\$5,060	\$5,500	\$5,710	\$5,900	\$6,050	\$6,050	\$6,490	\$6,920	\$8,040	\$8,510	\$8,970	\$5,011,360
	TOTAL	\$5,230	\$5,930	\$7,700	\$8,700	\$9,750	\$10,260	\$10,690	\$11,070	\$11,070	\$12,100	\$13,750	\$17,970	\$19,140	\$20,370	\$9,058,070
CK	BASIN	\$1,630	\$1,860	\$2,340	\$2,790	\$3,270	\$3,490	\$3,670	\$3,850	\$3,850	\$4,310	\$5,240	\$7,630	\$8,170	\$8,750	\$2,542,270
	PIPE	\$3,420	\$3,870	\$5,140	\$5,580	\$6,060	\$6,300	\$6,510	\$6,680	\$6,680	\$7,160	\$7,640	\$8,870	\$9,360	\$9,900	\$4,510,290
	TOTAL	\$5,050	\$5,730	\$7,480	\$8,370	\$9,330	\$9,790	\$10,180	\$10,530	\$10,530	\$11,470	\$12,880	\$16,500	\$17,550	\$18,650	\$7,052,560
CL	BASIN	\$770	\$880	\$1,100	\$1,310	\$1,540	\$1,640	\$1,730	\$1,810	\$1,810	\$2,030	\$2,470	\$3,590	\$3,840	\$4,120	\$2,007,780
	PIPE	\$1,130	\$1,280	\$1,690	\$1,840	\$2,000	\$2,080	\$2,150	\$2,200	\$2,200	\$2,360	\$2,520	\$2,920	\$3,090	\$3,260	\$2,144,570
	TOTAL	\$1,900	\$2,160	\$2,790	\$3,150	\$3,540	\$3,720	\$3,880	\$4,010	\$4,010	\$4,390	\$4,990	\$6,510	\$6,930	\$7,380	\$4,152,350
CM	BASIN	\$300	\$340	\$430	\$510	\$600	\$640	\$670	\$700	\$700	\$790	\$960	\$1,390	\$1,490	\$1,600	\$778,490
	PIPE	\$730	\$820	\$1,090	\$1,190	\$1,290	\$1,340	\$1,380	\$1,420	\$1,420	\$1,520	\$1,620	\$1,890	\$2,000	\$2,100	\$1,247,040
	TOTAL	\$1,030	\$1,160	\$1,520	\$1,700	\$1,890	\$1,980	\$2,050	\$2,120	\$2,120	\$2,310	\$2,580	\$3,280	\$3,490	\$3,700	\$2,025,530
*Note: A surcharge fee is in effect in addition to the rates per Board Resolution No. 1228 adopted October 10, 1983																
CN	BASIN	\$180	\$210	\$260	\$310	\$360	\$390	\$410	\$430	\$430	\$480	\$580	\$850	\$910	\$970	\$597,930
	PIPE	\$880	\$990	\$1,310	\$1,430	\$1,550	\$1,610	\$1,660	\$1,710	\$1,710	\$1,830	\$1,950	\$2,270	\$2,400	\$2,530	\$1,802,660
	TOTAL	\$1,060	\$1,200	\$1,570	\$1,740	\$1,910	\$2,000	\$2,070	\$2,140	\$2,140	\$2,310	\$2,530	\$3,120	\$3,310	\$3,500	\$2,400,590
*Note: A surcharge fee is in effect in addition to the rates per Board Resolution No. 1159 adopted September 14, 1981.																
CO1	BASIN	\$530	\$600	\$750	\$900	\$1,050	\$1,130	\$1,180	\$1,240	\$1,240	\$1,390	\$1,690	\$2,460	\$2,630	\$2,820	\$446,571
	PIPE	\$1,640	\$1,850	\$2,460	\$2,670	\$2,900	\$3,020	\$3,120	\$3,200	\$3,200	\$3,430	\$3,660	\$4,250	\$4,490	\$4,740	\$1,191,940
	TOTAL	\$2,170	\$2,450	\$3,210	\$3,570	\$3,950	\$4,150	\$4,300	\$4,440	\$4,440	\$4,820	\$5,350	\$6,710	\$7,120	\$7,560	\$1,638,511
CP	BASIN	\$2,560	\$2,920	\$3,660	\$4,380	\$5,120	\$5,480	\$5,760	\$6,050	\$6,050	\$6,760	\$8,220	\$11,960	\$12,810	\$13,730	\$1,968,200
	PIPE	\$3,980	\$4,500	\$5,970	\$6,490	\$7,040	\$7,320	\$7,560	\$7,760	\$7,760	\$8,320	\$8,880	\$10,310	\$10,910	\$11,500	\$2,454,770
	TOTAL	\$6,540	\$7,420	\$9,630	\$10,870	\$12,160	\$12,800	\$13,320	\$13,810	\$13,810	\$15,080	\$17,100	\$22,270	\$23,720	\$25,230	\$4,442,970
CQ	BASIN	\$2,180	\$2,490	\$3,120	\$3,730	\$4,360	\$4,670	\$4,910	\$5,150	\$5,150	\$5,760	\$7,000	\$10,180	\$10,900	\$11,690	\$2,316,260
	PIPE	\$3,210	\$3,620	\$4,810	\$5,230	\$5,680	\$5,900	\$6,090	\$6,250	\$6,250	\$6,700	\$7,150	\$8,300	\$8,790	\$9,270	\$2,554,480
	TOTAL	\$5,390	\$6,110	\$7,930	\$8,960	\$10,040	\$10,570	\$11,000	\$11,400	\$11,400	\$12,460	\$14,150	\$18,480	\$19,690	\$20,960	\$4,870,740
CS	BASIN	\$490	\$560	\$700	\$840	\$980	\$1,050	\$1,110	\$1,160	\$1,160	\$1,300	\$1,580	\$2,300	\$2,460	\$2,640	\$1,926,400
	PIPE	\$2,670	\$3,020	\$4,010	\$4,350	\$4,730	\$4,910	\$5,070	\$5,210	\$5,210	\$5,580	\$5,960	\$6,920	\$7,320	\$7,720	\$5,796,190
	TOTAL	\$3,160	\$3,580	\$4,710	\$5,190	\$5,710	\$5,960	\$6,180	\$6,370	\$6,370	\$6,880	\$7,540	\$9,220	\$9,780	\$10,360	\$7,722,590
CU	BASIN	\$1,270	\$1,440	\$1,810	\$2,160	\$2,530	\$2,710	\$2,850	\$2,990	\$2,990	\$3,340	\$4,060	\$5,910	\$6,330	\$6,780	\$1,849,140
	PIPE	\$2,290	\$2,590	\$3,440	\$3,740	\$4,060	\$4,220	\$4,360	\$4,470	\$4,470	\$4,790	\$5,110	\$6,280	\$6,630	\$6,980	\$1,857,680
	TOTAL	\$3,560	\$4,030	\$5,250	\$5,900	\$6,590	\$6,930	\$7,210	\$7,460	\$7,460	\$8,130	\$9,170	\$11,850	\$12,610	\$13,410	\$3,706,820
CV	BASIN	\$1,010	\$1,150	\$1,450	\$1,730	\$2,020	\$2,160	\$2,280	\$2,390	\$2,390	\$2,670	\$3,250	\$4,720	\$5,060	\$5,420	\$1,588,000
	PIPE	\$860	\$970	\$1,290	\$1,410	\$1,530	\$1,590	\$1,640	\$1,680	\$1,680	\$1,800	\$1,920	\$2,230	\$2,360	\$2,490	\$751,080
	TOTAL	\$1,870	\$2,120	\$2,740	\$3,140	\$3,550	\$3,750	\$3,920	\$4,070	\$4,070	\$4,470	\$5,170	\$6,950	\$7,420	\$7,910	\$2,339,080

DRAINAGE FEE SCHEDULE FOR ZONE 1: PLANNED LOCAL DRAINAGE AREAS

Area		AE-5, A-L, O	A1, A2, RR	R-1-E, R-1-EH, R-A	R-1-A, R-1-AH	R-1-B, R-1-C, RE	R-1 40%	R-1 45%	R-1 50%	R-2, M-H	R-3	R-4, T-P	N-1, M-2, M-3, C-R, M-1-P, S-L	C-P, C-M, R-P	C-1, C-2, C-3, C-4, C-5, C-6, C-L, P	Total Cost
CW	BASIN	\$530	\$600	\$760	\$900	\$1,060	\$1,130	\$1,190	\$1,250	\$1,250	\$1,400	\$1,700	\$2,470	\$2,650	\$2,840	\$1,325,139
	PIPE	\$620	\$700	\$920	\$1,000	\$1,090	\$1,130	\$1,170	\$1,200	\$1,200	\$1,290	\$1,370	\$1,590	\$1,690	\$1,780	\$1,036,749
	TOTAL	\$1,150	\$1,300	\$1,680	\$1,900	\$2,150	\$2,260	\$2,360	\$2,450	\$2,450	\$2,690	\$3,070	\$4,060	\$4,340	\$4,620	\$2,361,888
CX	BASIN	\$750	\$850	\$1,070	\$1,280	\$1,500	\$1,600	\$1,690	\$1,770	\$1,770	\$1,980	\$2,400	\$3,500	\$3,750	\$4,020	\$1,327,077
	PIPE	\$1,190	\$1,350	\$1,790	\$1,940	\$2,110	\$2,190	\$2,260	\$2,320	\$2,320	\$2,490	\$2,660	\$3,090	\$3,270	\$3,440	\$1,744,171
	TOTAL	\$1,940	\$2,200	\$2,860	\$3,220	\$3,610	\$3,790	\$3,950	\$4,090	\$4,090	\$4,470	\$5,060	\$6,590	\$7,020	\$7,460	\$3,071,248
CY	BASIN	\$650	\$740	\$920	\$1,100	\$1,290	\$1,380	\$1,450	\$1,520	\$1,520	\$1,700	\$2,070	\$3,010	\$3,230	\$3,460	\$971,280
	PIPE	\$1,000	\$1,130	\$1,500	\$1,630	\$1,770	\$1,840	\$1,900	\$1,950	\$1,950	\$2,090	\$2,230	\$2,590	\$2,740	\$2,890	\$1,201,510
	TOTAL	\$1,650	\$1,870	\$2,420	\$2,730	\$3,060	\$3,220	\$3,350	\$3,470	\$3,470	\$3,790	\$4,300	\$5,600	\$5,970	\$6,350	\$2,172,790
CZ	BASIN	\$520	\$590	\$740	\$880	\$1,030	\$1,110	\$1,160	\$1,220	\$1,220	\$1,370	\$1,660	\$2,420	\$2,590	\$2,770	\$1,440,920
	PIPE	\$1,150	\$1,300	\$1,720	\$1,870	\$2,100	\$2,110	\$2,180	\$2,240	\$2,240	\$2,400	\$2,560	\$2,970	\$3,140	\$3,310	\$2,555,610
	TOTAL	\$1,670	\$1,890	\$2,460	\$2,750	\$3,060	\$3,220	\$3,340	\$3,460	\$3,460	\$3,770	\$4,220	\$5,390	\$5,730	\$6,080	\$3,996,530
DE	BASIN	\$1,310	\$1,500	\$1,880	\$2,250	\$2,630	\$2,810	-	-	\$3,100	\$3,470	\$4,220	\$6,140	\$6,570	\$7,040	\$2,464,230
	PIPE	\$2,220	\$2,510	\$3,330	\$3,620	\$3,930	\$4,090	-	-	\$4,330	\$4,640	\$4,950	\$5,750	\$6,080	\$6,420	\$3,333,241
	TOTAL	\$3,530	\$4,010	\$5,210	\$5,870	\$6,560	\$6,900	-	-	\$7,430	\$8,110	\$9,170	\$11,890	\$12,650	\$13,460	\$5,797,471
*Note: A surcharge fee is in effect in addition to the rates per Board Resolution No. 2006-486 adopted January 25, 2006.																
DF	BASIN	\$570	\$650	\$820	\$970	\$1,140	\$1,220	\$1,280	\$1,350	\$1,350	\$1,510	\$1,830	\$2,660	\$2,850	\$3,060	\$165,172
	PIPE	\$1,070	\$1,210	\$1,610	\$1,750	\$1,900	\$1,970	\$2,040	\$2,090	\$2,090	\$2,240	\$2,390	\$2,780	\$2,940	\$3,100	\$283,883
	TOTAL	\$1,640	\$1,860	\$2,430	\$2,720	\$3,040	\$3,190	\$3,320	\$3,440	\$3,440	\$3,750	\$4,220	\$5,440	\$5,790	\$6,160	\$449,055
DG	BASIN	\$720	\$830	\$1,040	\$1,240	\$1,450	\$1,550	\$1,630	\$1,710	\$1,710	\$1,910	\$2,320	\$3,380	\$3,620	\$3,880	\$447,419
	PIPE	\$1,260	\$1,430	\$1,900	\$2,060	\$2,240	\$2,320	\$2,400	\$2,460	\$2,460	\$2,640	\$3,270	\$3,650	\$3,460	\$3,650	\$720,114
	TOTAL	\$1,980	\$2,260	\$2,940	\$3,300	\$3,690	\$3,870	\$4,030	\$4,170	\$4,170	\$4,550	\$5,140	\$6,650	\$7,080	\$7,530	\$1,167,533
DH	BASIN	\$860	\$980	\$1,230	\$1,470	\$1,720	\$1,840	\$1,930	\$2,030	\$2,030	\$2,270	\$2,760	\$4,010	\$4,290	\$4,600	\$1,590,510
	PIPE	\$960	\$1,080	\$1,440	\$1,560	\$1,690	\$1,760	\$1,820	\$1,870	\$1,870	\$2,000	\$2,130	\$2,480	\$2,620	\$2,770	\$1,109,580
	TOTAL	\$1,820	\$2,060	\$2,670	\$3,030	\$3,410	\$3,600	\$3,750	\$3,900	\$3,900	\$4,270	\$4,890	\$6,490	\$6,910	\$7,370	\$2,700,090
DI	BASIN	\$460	\$520	\$650	\$780	\$920	\$980	\$1,030	\$1,080	\$1,080	\$1,210	\$1,470	\$2,140	\$2,290	\$2,450	\$219,705
	PIPE	\$750	\$850	\$1,120	\$1,220	\$1,330	\$1,380	\$1,420	\$1,460	\$1,460	\$1,570	\$1,670	\$1,940	\$2,050	\$2,170	\$326,191
	TOTAL	\$1,210	\$1,370	\$1,770	\$2,000	\$2,250	\$2,360	\$2,450	\$2,540	\$2,540	\$2,780	\$3,140	\$4,080	\$4,340	\$4,620	\$545,896
DK	BASIN	\$200	\$230	\$290	\$340	\$400	\$430	\$450	\$470	\$470	\$530	\$640	\$930	\$1,000	\$1,070	\$918,510
	PIPE	\$1,390	\$1,570	\$2,090	\$2,270	\$2,460	\$2,560	\$2,650	\$2,710	\$2,710	\$2,910	\$3,100	\$3,610	\$3,810	\$4,020	\$5,401,110
	TOTAL	\$1,590	\$1,800	\$2,380	\$2,610	\$2,860	\$2,990	\$3,100	\$3,180	\$3,180	\$3,440	\$3,740	\$4,540	\$4,810	\$5,090	\$6,319,620
DL	BASIN	\$2,220	\$2,220	\$2,790	\$3,330	\$3,900	\$4,170	\$4,390	\$4,600	\$4,600	\$5,150	\$6,260	\$9,100	\$9,740	\$10,450	\$2,295,553
	PIPE	\$3,090	\$3,090	\$4,100	\$4,450	\$4,840	\$5,030	\$5,190	\$5,330	\$5,330	\$5,710	\$6,090	\$7,080	\$7,480	\$7,890	\$2,766,492
	TOTAL	\$5,310	\$5,310	\$6,890	\$7,780	\$8,740	\$9,200	\$9,580	\$9,930	\$9,930	\$10,860	\$12,350	\$16,180	\$17,220	\$18,340	\$5,062,045
DM	BASIN	\$1,520	\$1,740	\$2,180	\$2,600	\$3,040	\$3,260	\$3,420	\$3,590	\$3,590	\$4,020	\$4,890	\$7,110	\$7,610	\$8,160	\$3,575,530
	PIPE	\$3,900	\$4,410	\$5,850	\$6,350	\$6,900	\$7,170	\$7,410	\$7,600	\$7,600	\$8,150	\$8,690	\$10,100	\$10,680	\$11,270	\$7,757,310
	TOTAL	\$5,420	\$6,150	\$8,030	\$8,950	\$9,940	\$10,430	\$10,830	\$11,190	\$11,190	\$12,170	\$13,580	\$17,210	\$18,290	\$19,430	\$11,332,840
DN	BASIN	\$2,040	\$2,320	\$2,920	\$3,490	\$4,080	\$4,360	\$4,590	\$4,810	\$4,810	\$5,380	\$6,550	\$9,520	\$10,200	\$10,930	\$4,505,120
	PIPE	\$3,350	\$3,790	\$5,030	\$5,460	\$5,930	\$6,170	\$6,370	\$6,530	\$6,530	\$7,000	\$7,470	\$9,680	\$9,180	\$9,680	\$6,269,020
	TOTAL	\$5,390	\$6,110	\$7,950	\$8,950	\$10,010	\$10,530	\$10,960	\$11,340	\$11,340	\$12,380	\$14,020	\$18,200	\$19,380	\$20,610	\$10,774,140
*Note: A surcharge fee is in effect in addition to the rates per Board Resolution No. 2016-840 adopted January 13, 2016.																

DRAINAGE FEE SCHEDULE FOR ZONE 1: PLANNED LOCAL DRAINAGE AREAS

Area		AE-5, A-1, O	A1, A2, RR	R-1-E, R-1-EH, R-A	R-1-A, R-1-AH	R-1-B, R-1-C, RE	R-1 40%	R-1 45%	R-1 50%	R-2, M-H	R-3	R-4, T-P	M-1, M-2, M-3, C-R, M-1-P, S-L	C-P, C-M, R-P	C-1, C-2, C-3, C-4, C-5, C-6, C-L, P	Total Cost
DO	BASIN	\$1,510	\$1,510	\$1,890	\$2,260	\$2,650	\$2,830	\$2,980	\$3,120	\$3,120	\$3,490	\$4,250	\$6,180	\$6,620	\$7,090	\$3,920,734
	PIPE	\$3,170	\$3,170	\$4,200	\$4,570	\$4,960	\$5,160	\$5,320	\$5,460	\$5,460	\$5,860	\$6,250	\$7,260	\$7,680	\$8,100	\$6,524,973
	TOTAL	\$4,680	\$4,680	\$6,090	\$6,830	\$7,610	\$7,990	\$8,300	\$8,580	\$8,580	\$9,350	\$10,500	\$13,440	\$14,300	\$15,190	\$10,445,707
*Note: A surcharge fee is in effect in addition to the rates per Board Resolution No. 2014-806 adopted December 10, 2014.																
DP	BASIN	\$1,330	\$1,520	\$1,900	\$2,270	\$2,660	\$2,850	\$2,990	\$3,140	\$3,140	\$3,510	\$4,270	\$6,210	\$6,650	\$7,130	\$4,998,170
	PIPE	\$4,260	\$4,820	\$6,400	\$6,950	\$7,550	\$7,850	\$8,100	\$8,310	\$8,310	\$8,910	\$9,510	\$11,040	\$11,680	\$12,320	\$11,949,550
	TOTAL	\$5,590	\$6,340	\$8,300	\$9,220	\$10,210	\$10,700	\$11,090	\$11,450	\$11,450	\$12,420	\$13,780	\$17,250	\$18,330	\$19,450	\$16,947,720
DQ	BASIN	\$4,890	\$5,570	\$6,990	\$8,360	\$9,770	\$10,460	\$10,990	\$11,530	\$11,530	\$12,900	\$15,680	\$22,820	\$24,430	\$26,190	\$4,023,780
	PIPE	\$3,760	\$4,250	\$5,640	\$6,130	\$6,660	\$6,920	\$7,140	\$7,330	\$7,330	\$7,860	\$8,380	\$9,740	\$10,300	\$10,870	\$2,878,420
	TOTAL	\$8,650	\$9,820	\$12,630	\$14,490	\$16,430	\$17,380	\$18,130	\$18,860	\$18,860	\$20,760	\$24,060	\$32,560	\$34,730	\$37,060	\$6,702,200
DS	BASIN	\$1,860	\$2,120	\$2,660	\$3,180	\$3,710	\$3,970	\$4,180	\$4,380	\$4,380	\$4,900	\$5,960	\$8,670	\$9,280	\$9,950	\$8,105,540
	PIPE	\$3,590	\$4,060	\$5,380	\$6,350	\$7,850	\$8,600	\$9,200	\$9,500	\$9,500	\$10,500	\$12,500	\$18,290	\$19,830	\$20,370	\$12,669,090
	TOTAL	\$5,450	\$6,180	\$8,040	\$9,030	\$10,060	\$10,570	\$11,000	\$11,380	\$11,380	\$12,400	\$13,960	\$17,960	\$19,110	\$20,320	\$20,774,630
DV	BASIN	\$510	\$580	\$730	\$870	\$1,020	\$1,090	\$1,150	\$1,210	\$1,210	\$1,350	\$1,640	\$2,390	\$2,550	\$2,740	\$1,059,690
	PIPE	\$4,160	\$4,700	\$6,240	\$6,780	\$7,360	\$7,650	\$7,900	\$8,110	\$8,110	\$8,690	\$9,270	\$10,770	\$11,390	\$12,020	\$5,030,260
	TOTAL	\$4,670	\$5,280	\$6,970	\$7,650	\$8,380	\$8,740	\$9,050	\$9,320	\$9,320	\$10,040	\$10,910	\$13,160	\$13,940	\$14,760	\$6,089,950
EF	BASIN	\$1,200	\$1,370	\$1,720	\$2,060	\$2,410	\$2,580	\$2,710	\$2,840	\$2,840	\$3,180	\$3,860	\$5,620	\$6,020	\$6,450	\$2,422,760
	PIPE	\$740	\$840	\$1,110	\$1,210	\$1,320	\$1,370	\$1,410	\$1,450	\$1,450	\$1,550	\$1,660	\$1,920	\$2,040	\$2,150	\$1,177,970
	TOTAL	\$1,940	\$2,210	\$2,830	\$3,270	\$3,730	\$3,950	\$4,120	\$4,290	\$4,290	\$4,730	\$5,520	\$7,540	\$8,060	\$8,600	\$3,600,730
EG	BASIN	\$550	\$630	\$790	\$940	\$1,100	\$1,180	\$1,240	\$1,300	\$1,300	\$1,450	\$1,760	\$2,570	\$2,750	\$2,940	\$1,332,951
	PIPE	\$2,140	\$2,410	\$3,200	\$3,480	\$3,480	\$3,930	\$4,060	\$4,160	\$4,160	\$4,460	\$4,760	\$5,530	\$5,850	\$6,170	\$3,817,089
	TOTAL	\$2,690	\$3,040	\$3,990	\$4,420	\$4,580	\$5,110	\$5,300	\$5,460	\$5,460	\$5,910	\$6,520	\$8,100	\$8,600	\$9,110	\$5,150,040
EH	BASIN	\$1,060	\$1,210	\$1,520	\$1,810	\$2,120	\$2,270	\$2,380	\$2,500	\$2,500	\$2,800	\$3,400	\$4,950	\$5,300	\$5,680	\$3,283,480
	PIPE	\$2,740	\$3,100	\$4,110	\$4,470	\$4,850	\$5,040	\$5,210	\$5,350	\$5,350	\$5,730	\$6,110	\$7,100	\$7,510	\$7,920	\$5,378,100
	TOTAL	\$3,800	\$4,310	\$5,630	\$6,280	\$6,970	\$7,310	\$7,590	\$7,850	\$7,850	\$8,530	\$9,510	\$12,050	\$12,810	\$13,600	\$8,661,580
EI	BASIN	\$2,270	\$2,580	\$3,240	\$3,880	\$4,530	\$4,850	\$5,100	\$5,350	\$5,350	\$5,990	\$7,280	\$10,590	\$11,340	\$12,150	\$1,895,560
	PIPE	\$2,010	\$2,270	\$3,010	\$3,270	\$3,550	\$3,700	\$3,820	\$3,920	\$3,920	\$4,200	\$4,480	\$5,200	\$5,500	\$5,800	\$997,230
	TOTAL	\$4,280	\$4,850	\$6,250	\$7,150	\$8,080	\$8,550	\$8,920	\$9,270	\$9,270	\$10,190	\$11,760	\$15,790	\$16,840	\$17,950	\$2,892,790
EJ	BASIN	\$2,790	\$3,190	\$4,000	\$4,780	\$5,590	\$5,980	\$6,290	\$6,590	\$6,590	\$7,380	\$8,970	\$13,050	\$13,970	\$14,980	\$2,845,960
	PIPE	\$3,110	\$3,520	\$4,670	\$5,080	\$5,510	\$5,790	\$5,920	\$6,070	\$6,070	\$6,510	\$6,940	\$8,070	\$8,530	\$9,000	\$2,739,160
	TOTAL	\$5,900	\$6,710	\$8,670	\$9,860	\$11,100	\$11,770	\$12,210	\$12,660	\$12,660	\$13,890	\$15,910	\$21,120	\$22,500	\$23,980	\$5,585,120
EK	BASIN	\$400	\$450	\$570	\$680	\$800	\$850	\$890	\$940	\$940	\$1,050	\$1,280	\$1,860	\$1,990	\$2,130	\$632,917
	PIPE	\$1,780	\$2,010	\$2,670	\$2,900	\$3,150	\$3,280	\$3,380	\$3,470	\$3,470	\$3,720	\$3,970	\$4,610	\$4,880	\$5,150	\$2,364,725
	TOTAL	\$2,180	\$2,460	\$3,240	\$3,580	\$3,950	\$4,130	\$4,270	\$4,410	\$4,410	\$4,770	\$5,250	\$6,470	\$6,870	\$7,280	\$2,997,643
EL	BASIN	\$1,600	\$1,820	\$2,280	\$2,730	\$3,200	\$3,420	\$3,600	\$3,770	\$3,770	\$4,220	\$5,130	\$7,460	\$7,990	\$8,560	\$770,910
	PIPE	\$1,490	\$1,680	\$2,230	\$2,420	\$2,630	\$2,740	\$2,820	\$2,900	\$2,900	\$3,110	\$3,310	\$3,850	\$4,070	\$4,300	\$397,750
	TOTAL	\$3,090	\$3,500	\$4,510	\$5,150	\$5,830	\$6,160	\$6,420	\$6,670	\$6,670	\$7,330	\$8,440	\$11,310	\$12,060	\$12,860	\$1,168,660
EM	BASIN	\$1,490	\$1,700	\$2,130	\$2,550	\$2,980	\$3,190	\$3,350	\$3,520	\$3,520	\$3,930	\$4,780	\$6,960	\$7,450	\$7,990	\$1,944,610
	PIPE	\$2,680	\$3,030	\$4,020	\$4,370	\$4,750	\$4,930	\$5,100	\$5,230	\$5,230	\$5,610	\$5,980	\$6,950	\$7,350	\$7,750	\$2,690,350
	TOTAL	\$4,170	\$4,730	\$6,150	\$6,920	\$7,730	\$8,120	\$8,450	\$8,750	\$8,750	\$9,540	\$10,760	\$13,910	\$14,800	\$15,740	\$4,634,960

DRAINAGE FEE SCHEDULE FOR ZONE 1: PLANNED LOCAL DRAINAGE AREAS

Area		AE-5, A-L, O	A1, A2, R2	R-1-E, R-1-EH, R-A	R-1-A, R-1-AH	R-1-B, R-1-C, RE	R-1 40%	R-1 45%	R-1 50%	R-2, M-H	R-3	R-4, T-P	M-1, M-2, M-3, C-R, M-1-P, S-L	C-P, C-M, R-P	C-1, C-2, C-3, C-4, C-5, C-6, C-L, P	Total Cost
EN	BASIN	\$1,430	\$1,630	\$2,040	\$2,440	\$2,860	\$3,060	\$3,210	\$3,370	\$3,370	\$3,770	\$4,580	\$6,670	\$7,140	\$7,660	\$2,114,525
	PIPE	\$4,190	\$4,730	\$6,280	\$6,820	\$7,410	\$7,700	\$7,960	\$8,160	\$8,160	\$8,750	\$9,340	\$10,840	\$11,470	\$12,100	\$5,170,357
	TOTAL	\$5,620	\$6,360	\$8,320	\$9,260	\$10,270	\$10,760	\$11,170	\$11,530	\$11,530	\$12,520	\$13,920	\$17,510	\$18,610	\$19,760	\$7,284,882
EO	BASIN	\$1,350	\$1,540	\$1,930	\$2,310	\$2,700	\$2,890	\$3,040	\$3,190	\$3,190	\$3,570	\$4,340	\$6,310	\$6,750	\$7,240	\$2,182,432
	PIPE	\$3,110	\$3,510	\$4,670	\$5,070	\$5,510	\$5,720	\$5,910	\$6,070	\$6,070	\$6,500	\$6,940	\$8,060	\$8,520	\$8,990	\$4,273,150
	TOTAL	\$4,460	\$5,050	\$6,600	\$7,380	\$8,210	\$8,610	\$8,950	\$9,260	\$9,260	\$10,070	\$11,280	\$14,370	\$15,270	\$16,230	\$6,455,582
NN	BASIN	\$700	\$800	\$1,000	\$1,200	\$1,400	\$1,500	\$1,580	\$1,650	\$1,650	\$1,850	\$2,250	\$3,270	\$3,500	\$3,750	\$1,758,140
	PIPE	\$2,950	\$3,340	\$4,430	\$4,820	\$5,230	\$5,440	\$5,610	\$5,760	\$5,760	\$6,180	\$6,590	\$7,650	\$8,100	\$8,540	\$5,754,110
	TOTAL	\$3,650	\$4,140	\$5,430	\$6,020	\$6,630	\$6,940	\$7,190	\$7,410	\$7,410	\$8,030	\$8,840	\$10,920	\$11,600	\$12,290	\$7,512,250
1G	BASIN	\$1,330	\$1,330	\$1,670	\$1,990	\$2,330	\$2,500	\$2,620	\$2,750	\$2,750	\$3,080	\$3,740	\$5,450	\$5,830	\$6,250	\$1,660,870
	PIPE	\$1,380	\$1,380	\$1,830	\$1,980	\$2,150	\$2,240	\$2,310	\$2,370	\$2,370	\$2,540	\$2,710	\$3,150	\$3,330	\$3,520	\$1,541,159
	TOTAL	\$2,710	\$2,710	\$3,500	\$3,970	\$4,480	\$4,740	\$4,930	\$5,120	\$5,120	\$5,620	\$6,450	\$8,600	\$9,160	\$9,770	\$3,202,029
3G	BASIN	\$2,130	\$2,430	\$3,050	\$3,650	\$4,270	\$4,560	\$4,800	\$5,030	\$5,030	\$5,630	\$6,850	\$9,960	\$10,670	\$11,430	\$4,649,160
	PIPE	\$2,260	\$2,560	\$3,390	\$3,690	\$4,010	\$4,160	\$4,300	\$4,410	\$4,410	\$4,730	\$5,050	\$5,860	\$6,200	\$6,540	\$4,154,740
	TOTAL	\$4,390	\$4,990	\$6,440	\$7,340	\$8,280	\$8,720	\$9,100	\$9,440	\$9,440	\$10,360	\$11,900	\$15,820	\$16,870	\$17,970	\$8,803,900
7C	BASIN	\$1,810	\$1,810	\$2,260	\$2,710	\$3,170	\$3,390	\$3,560	\$3,740	\$3,740	\$4,180	\$5,080	\$7,400	\$7,920	\$8,490	\$3,220,892
	PIPE	\$1,820	\$1,820	\$2,410	\$2,620	\$2,850	\$2,960	\$3,060	\$3,140	\$3,140	\$3,360	\$3,590	\$4,170	\$4,410	\$4,650	\$2,323,081
	TOTAL	\$3,630	\$3,630	\$4,670	\$5,330	\$6,020	\$6,350	\$6,620	\$6,880	\$6,880	\$7,540	\$8,670	\$11,570	\$12,330	\$13,140	\$5,543,973
7D	BASIN	\$1,690	\$1,920	\$2,410	\$2,880	\$3,370	\$3,610	\$3,790	\$3,980	\$3,980	\$4,450	\$5,410	\$7,870	\$8,430	\$9,030	\$2,955,400
	PIPE	\$1,660	\$1,880	\$2,490	\$2,710	\$2,940	\$3,060	\$3,160	\$3,240	\$3,240	\$3,470	\$3,710	\$4,300	\$4,550	\$4,800	\$2,016,120
	TOTAL	\$3,350	\$3,800	\$4,900	\$5,590	\$6,310	\$6,670	\$6,950	\$7,220	\$7,220	\$7,920	\$9,120	\$12,170	\$12,980	\$13,830	\$4,971,520
*Note: A surcharge fee is in effect in addition to the rates per Board Resolution No. 2005-480 adopted November 16, 2005.																
7H	BASIN	\$1,610	\$1,840	\$2,310	\$2,760	\$3,230	\$3,450	\$3,630	\$3,810	\$3,810	\$4,260	\$5,180	\$7,540	\$8,070	\$8,650	\$3,659,000
	PIPE	\$3,030	\$3,430	\$4,550	\$4,940	\$5,370	\$5,580	\$5,760	\$5,920	\$5,920	\$6,340	\$6,760	\$7,860	\$8,310	\$8,770	\$4,870,870
	TOTAL	\$4,640	\$5,270	\$6,860	\$7,700	\$8,600	\$9,030	\$9,390	\$9,730	\$9,730	\$10,600	\$11,940	\$15,400	\$16,380	\$17,420	\$8,529,870
*Note: A surcharge fee is in effect in addition to the rates per Board Resolution No. 2005-480 adopted November 16, 2005.																

DRAINAGE FEE SCHEDULE FOR ZONE 2: PLANNED LOCAL DRAINAGE AREAS

Area	AE-5, A-L, O	A1, A2, RR	R-1-E, R-1-EH, R-A	R-1-A, R-1-AH	R-1-B, R-1-C, RE	R-1 40%	R-1 45%	R-1 50%	R-2, M-H	R-3	R-4, T-P	** J, M-2, M-3, C-R, M-1-P, S-L	C-P, C-M, R-P	C-1, C-2, C-3, C-4, C-5, C-6, C-L, P	Total Cost
Zone 2	BASIN	\$610	\$700	\$870	\$1,040	\$1,220	\$1,310	\$1,370	\$1,440	\$1,610	\$1,960	\$2,850	\$3,050	\$3,270	\$68,731,015
	PIPE	\$1,480	\$1,670	\$2,220	\$2,410	\$2,610	\$2,720	\$2,810	\$2,880	\$3,090	\$3,290	\$3,830	\$4,050	\$4,270	\$116,729,243
	TOTAL	\$2,090	\$2,370	\$3,090	\$3,450	\$3,830	\$4,030	\$4,180	\$4,320	\$4,700	\$5,250	\$6,680	\$7,100	\$7,540	\$185,460,258

Planned Local Drainage Areas: Zone 2

Area	Basin Cost	Pipe Cost	Total	Area	Basin Cost	Pipe Cost	Total	Area	Basin Cost	Pipe Cost	Total
A	\$1,919,667	\$1,062,326	\$2,981,993	X	\$1,432,285	\$449,059	\$1,881,344	OO	\$1,561,845	\$722,427	\$2,284,272
B	\$851,913	\$140,986	\$992,899	Y	\$1,038,356	\$2,267,715	\$3,306,071	PP	\$1,274,060	\$1,175,222	\$2,449,282
C	\$479,953	\$319,598	\$799,551	Z	\$1,105,955	\$2,528,057	\$3,634,012 **	RR	\$4,719,275	\$17,602,417	\$22,321,692
D	\$801,394	\$694,153	\$1,495,547	AA	\$941,661	\$1,186,976	\$2,128,637	SS	\$1,811,129	\$2,200,730	\$4,011,859
E	\$616,828	\$226,879	\$843,707	BB	\$469,078	\$822,774	\$1,291,852	TT	\$1,389,683	\$1,441,094	\$2,830,777
F	\$253,137	\$302,016	\$555,153	CC	\$440,132	\$2,085,646	\$2,525,778	UU1	\$474,282	\$769,970	\$1,244,252
G	\$1,123,777	\$157,007	\$1,280,784	CO2	\$874,040	\$1,424,260	\$2,298,300	UU2	\$1,229,583	\$1,683,909	\$2,913,492
H	\$99,858	\$214,682	\$314,540	DD	\$1,642,464	\$7,519,802	\$9,162,266	UU3	\$2,477,959	\$7,192,061	\$9,670,020
I	\$227,828	\$254,359	\$482,187	EE	\$754,118	\$3,356,664	\$4,110,782	VV	\$34,124	\$119,582	\$153,706
J	\$1,504,470	\$346,121	\$1,850,591	FF	\$1,430,542	\$9,484,710	\$10,915,252	WW	\$18,653	\$360,044	\$378,697
K	\$778,589	\$679,595	\$1,458,184	GG	\$1,918,839	\$1,418,733	\$3,337,572	XX	\$1,025,092	\$2,158,267	\$3,183,359
L	\$537,389	\$491,234	\$1,028,623	HH	\$3,185,427	\$4,502,078	\$7,687,505	ZZ	\$2,119,189	\$2,374,123	\$4,493,312
M	\$802,300	\$259,796	\$1,062,096	III	\$3,757,976	\$16,004,994	\$19,762,970				
N	\$407,405	\$437,326	\$844,731	II2	\$6,544,284	\$1,234,305	\$7,778,589				
O	\$865,371	\$193,195	\$1,058,566	II3	\$1,325,872	\$1,191,807	\$2,517,679				
P	\$669,066	\$278,425	\$947,491	II4	\$1,778,852	\$1,105,876	\$2,884,728				
T	\$1,488,906	\$1,943,916	\$3,432,822	JJ	\$1,579,931	\$3,836,869	\$5,416,800				
U	\$1,020,891	\$658,754	\$1,679,645	KK	\$1,422,053	\$1,491,780	\$2,913,833				
V	\$630,005	\$1,726,395	\$2,356,400	LL	\$1,633,707	\$2,791,939	\$4,425,646				
W	\$1,737,142	\$2,881,294	\$4,618,436	MM	\$504,680	\$957,296	\$1,461,976				

z ** Note: A surcharge fee is in effect in addition to the rates per Board Resolution No. 1386 adopted October 13, 1987.

DRAINAGE FEE SCHEDULE FOR ZONE 3: PLANNED LOCAL DRAINAGE AREAS

Area		AE-5, A-L, O	A1, A2, RR	R-1-E, R-1-EH, R-A	R-1-A, R-1-AH	R-1-B, R-1-C, RE	R-1 40%	R-1 45%	R-1 50%	R-2, M-H	R-3	R-4, T-P	M-1, M-2, M-3, C-R, M-1-P, S-1	C-P, C-M, R-P	C-1, C-2, C-3, C-4, C-5, C-6, C-L, P	Total Cost
Zone 3	BASIN	\$1,190	\$1,190	\$1,490	\$1,780	\$2,090	\$2,230	\$2,350	\$2,460	\$2,460	\$2,750	\$3,350	\$4,870	\$5,210	\$5,590	\$19,205,863
	PIPE	\$1,890	\$1,890	\$2,510	\$2,730	\$2,960	\$3,080	\$3,180	\$3,260	\$3,260	\$3,500	\$3,730	\$4,340	\$4,590	\$4,840	\$22,085,509
	TOTAL	\$3,080	\$3,080	\$4,000	\$4,510	\$5,050	\$5,310	\$5,530	\$5,720	\$5,720	\$6,250	\$7,080	\$9,210	\$9,800	\$10,430	\$41,291,372

Planned Local Drinage Areas: Zone 3

Area	Basin Cost	Pipe Cost	Total
Q	\$293,655	\$427,641	\$721,296
S	\$931,088	\$2,124,469	\$3,055,557
1E	\$1,689,187	\$925,282	\$2,614,469
2D	\$618,300	\$1,117,604	\$1,735,904
3A	\$845,790	\$783,260	\$1,629,050
3D	\$1,181,858	\$1,043,289	\$2,225,147
3F	\$862,762	\$1,224,098	\$2,086,860
4B	\$961,583	\$826,244	\$1,787,827
4C	\$1,001,364	\$2,423,300	\$3,424,664
4D	\$3,321,389	\$873,053	\$4,194,442
4E	\$2,420,366	\$2,116,810	\$4,537,176
5B/5C	\$3,311,968	\$2,165,483	\$5,477,451
5F	\$1,274,564	\$1,550,385	\$2,824,949
6D	\$1,303,823	\$1,607,529	\$2,911,352