

## 2018 Drainage and Surcharge Fee Amendments

<b>2018 Drainage Fee Amendments</b>				
	<b><u>Drainage Areas Within Zone 1 (Full Cost Areas)</u></b>	<b><u>Percent Change</u></b>	<b><u>Majority Zone Use</u></b>	<b><u>Comments</u></b>
1	"AE" (Valentine and Barstow)	+2.43	R-1-40%	Unit Cost Update
2	"AH" (Cornelia and Gettysburg)	+2.75	M-1	Unit Cost Update
3	"AI" (Blythe and Belmont)	+6.54	R-1-40%	Unit Cost Update
4	"AL" (Brawley and Weldon)	+7.89	C-1	Unit Cost Update, HST/CA-99 Area Adjustment
5	"AN" (Cornelia and Hedges)	+3.98	R-1-40%	Unit Cost Update
6	"AO" (Blythe and Belmont)	+9.28	R-1-40%	Unit Cost Update
7	"AR" (Cornelia and Whites Bridge)	+7.67	M-1	Unit Cost Update
8	"AS" (Valentine and California)	+4.14	R-1 40%	Unit Cost Update
9	"AU" (West and Annadale)	+7.54	R-1 40%	Unit Cost Update
10	"AV" (Fig and Central)	+14.25	M-1	Unit Cost Update, Remaster Plan Drainage Area, Proposed Basin Relocation Basin no longer shared w/FID
11	"AW1" (Orange and North)	+6.38	M-1	Unit Cost Update
12	"AW2" (Cherry and North)	+6.45	M-1	Unit Cost Update, Higher Completed Contract Costs
13	"AY" (Cedar and Central)	+10.20	M-1	Unit Cost Update, Excavation not completed by HST
14	"AZ" (Chestnut and Muscat)	+4.38	M-1	Unit Cost Update
15	"BD" (Willow and Vine)	+6.45	R-1-40%	Unit Cost Update
16	"BE" (Willow and Belgravia)	+5.00	R-1-40%	Unit Cost Update
17	"BF" (Chestnut and Church)	+4.30	R-1 40%	Unit Cost Update
18	"BG" (Peach and Annadale)	+5.91	R-1 40%	Unit Cost Update
19	"BJ" (Maple and Golden State)	+5.12	M-1	Unit Cost Update
20	"BK" (Clovis and Montecito)	+3.33	C-1	Unit Cost Update
21	"BL" (Armstrong and Church)	+5.20	C-1	Unit Cost Update
22	"BM" (Fowler and Butler)	+3.17	R-1-40%	Unit Cost Update
23	"BP" (Sunnyside and Harvey)	+5.11	M-1	Unit Cost Update
24	"BQ" (Fowler and Belmont)	+2.95	M-1	Unit Cost Update
25	"BR" (Clovis and Olive)	+8.82	M-1	Unit Cost Update

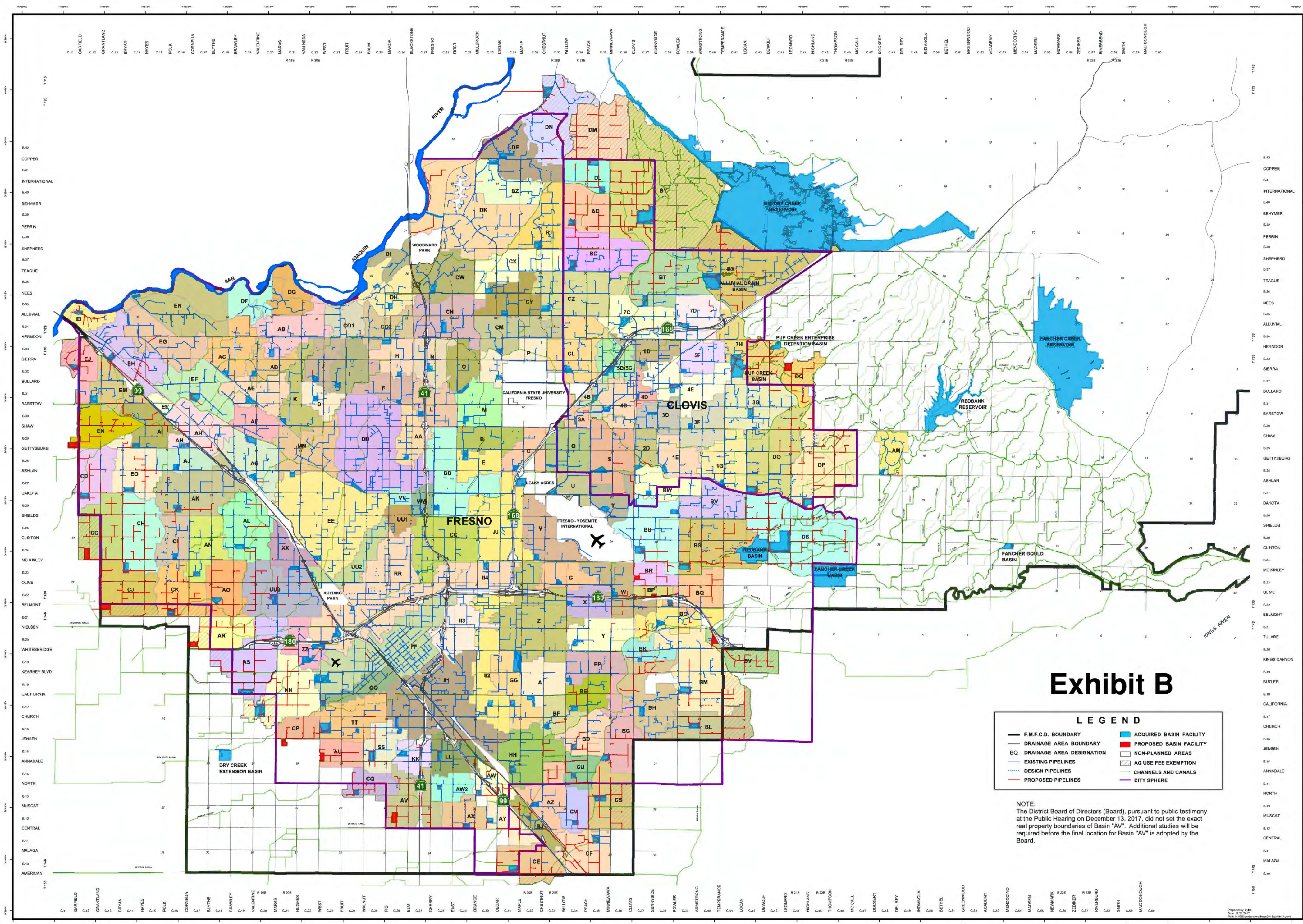
## **2018 Drainage and Surcharge Fee Amendments**

26	"BS" (Fowler and Floradora)	+6.17	R-1-40%	Unit Cost Update
27	"BT" (Sunnyside and Nees)	+5.30	R-1-40%	Unit Cost Update
28	"BU" (Clovis and Clinton)	+5.63	M-1	Unit Cost Update
29	"BY <sub>1</sub> " (Sunnyside and Behymer)	+7.89	R-1-40%	Unit Cost Update
30	"BY <sub>2</sub> " (Sunnyside and Behymer)	+10.85	R-1-40%	Unit Cost Update
31	"CD" (Garfield and Dakota)	+8.17	R-1-40%	Unit Cost Update
32	"CF" (Peach and Central)	+8.63	M-1	Unit Cost Update
33	"CG" (Garfield and McKinley)	+7.82	R-1-40%	Unit Cost Update
34	"CH" (Bryan and McKinley)	+9.18	R-1-40%	Unit Cost Update
35	"CK" (Polk and Belmont)	+5.27	R-1-40%	Unit Cost Update
36	"CP" (Marks and Jensen)	+7.93	R-1-40%	Unit Cost Update
37	"CQ" (Walnut and North)	+7.53	R-1-40%	Unit Cost Update
38	"CS" (Minnewawa and North)	+9.76	M-1	Unit Cost Update
39	"CU" (Willow and North)	+8.12	M-1	Unit Cost Update
40	"CV" (Willow and Central)	+5.62	M-1	Unit Cost Update
41	"DK" (Friant and Champlain)	+2.05	R-1-40%	Unit Cost Update
42	"DM" (Peach and Copper)	+8.65	R-1-40%	Unit Cost Update
43	"DN" (Friant and Willow)	+7.34	R-1-40%	Unit Cost Update, Contract Costs
44	"DP" (Highland and Dakota)	+9.97	R-1-40%	Unit Cost Update, Basin Redesign
45	"DQ" (Leonard and Sierra)	+6.43	R-1-40%	Unit Cost Update
46	"DS" (Leonard and Clinton)	+7.64	R-1-40%	Unit Cost Update
47	"DV" (Temperance and Kings Canyon)	+10.73	C-1	Unit Cost Update

## **2018 Drainage and Surcharge Fee Amendments**

48	"EF" (Cornelia and Dante)	+3.99	C-1	Unit Cost Update
49	"EH" (Golden State and Herndon)	+3.88	M-1	Unit Cost Update
50	"EJ" (Garfield and Sample)	+7.33	R-1-40%	Unit Cost Update
51	"EL" (Barcus and Barstow)	+5.70	M-1	Unit Cost Update
52	"EM" (Grantland and Barstow)	+11.39	R-1-40%	Unit Cost Update, HST/CA-99 Area Adjustment
53	"NN" (Valentine and Church)	+5.31	R-1-40%	Unit Cost Update
54	"7H" (Temperance and Bullard)	+6.24	R-1-40%	Unit Cost Update
	<b><u>ZONE 2 AREAS</u></b>	+2.03	R-1-40%	Unit Cost Update
<b><u>2018 Surcharge Fee Adjustments</u></b>				
	<b><u>Surcharge Areas</u></b>	<b><u>Percent Change</u></b>	<b><u>Majority Zone Use</u></b>	<b><u>Comments</u></b>
1	"BX" (Locan and Nees)	+6.00	C-P,C-M,R-P	Unit Cost Update
2	"DN" (Friant and Willow)	+3.20	R 1 40%	Unit Cost Update
3	"DO" (Locan and Ashlan)	+9.00	R-1-40%	Unit Cost Update





## Exhibit B

F.M.F.C.D. BOUNDARY

DRAINAGE AREA BOUNDARY

DRAINAGE AREA DESIGNATION

EXISTING PIPELINES

DESIGN PIPELINES

PROPOSED PIPELINES

ACQUIRED BASIN FACILITY

PROPOSED BASIN FACILITY

NON-PLANNED AREAS

AG USE FEE EXEMPTION

CHANNELS AND CANALS

CITY SPHERE

NOTE:  
The District Board of Directors (Board), pursuant to public testimony at the Public Hearing on December 13, 2017, did not set the exact real property boundaries of Basin "AV". Additional studies will be required before the final location for Basin "AV" is adopted by the Board.

Prepared by: [illegible]  
Date: 10/2/2017  
File: [illegible]