



# 2017 Fresno County Annual Crop & Livestock Report



...celebrating the Fresno-Kings  
Cattlemen's Association





# County of Fresno

## DEPARTMENT OF AGRICULTURE

**LES WRIGHT**

AGRICULTURAL COMMISSIONER/  
SEALER OF WEIGHTS & MEASURES

Karen Ross, Secretary  
California Department of Food and Agriculture

The Honorable Board of Supervisors  
County of Fresno

Sal Quintero, Chairman  
Andreas Borgeas Nathan Magsig  
Buddy Mendez Brian Pacheco  
Jean M. Rousseau,  
County Administrative Officer

It is my pleasure to submit the 2017 Fresno County Agricultural Crop and Livestock Report. In each of our annual reports, the Department likes to highlight a segment of our history; and this edition will feature the Fresno-Kings Cattlemen's Association. This report is primarily prepared pursuant to the provisions of Section 2279 of the California Food and Agriculture Code; and reflects the production value of \$7,028,024,100 for Fresno County ...an increase of 13.58% or \$840 million over the previous year.

Fresno County's agricultural strength is based on the diversity of crops produced and the accurate reporting of said crops. Included in the 2017 report are nearly 400 commodities of which 73 have a value in excess of one million dollars. Granted individual commodities may have trouble from year-to-year... but overall, we continue to supply the highest quality of food and fiber nationwide and abroad (to more than 97 countries around the world).

Once again, almonds continue to be the leading agricultural commodity in Fresno County. Total almond gross value for 2017 is \$1,220,082,000, which represents 17.4% of the total gross value of the crop and livestock report. The total gross value of grapes remained in the number two spot at \$951,231,000; followed by number three poultry at \$605,610,000.

Of special interest, the pistachio nut crop was valued at \$517,033,000 an increase of 104.22% over the 2016 value. The increase was due to both an increase of production acres and a higher price. In addition, fresh mandarins increased 124.54% or \$230,750,000 for a total gross value of \$427,734,000. The increase is also a reflection of higher production acres and increased price.

It is important to note the figures provided in this report reflect gross values and do not represent or reflect net profit or loss by individual growers, or the industry as a whole. Growers do not have control over input cost (such as fuel, labor, or packaging); and they cannot significantly affect market price.

We truly appreciate the many producers, processors, and agencies (both private and public) that supported our efforts in completing this report. In addition, a hearty thank-you goes out to my entire staff- especially Fred Rinder, Scotti Walker, Angel Gibson, Shoua VangXiong, Vera Scott-Slater and district staff. Without their hard work and valuable input, this report would not be possible.

Sincerely,

Les Wright  
Agricultural Commissioner/Sealer





*"If you're not at the table, you're on the menu"*

- J. D. Alexander  
National Cattlemen's Association President

## TABLE OF CONTENTS

	Page
Fresno County's 10 Leading Crops .....	1
Fresno-Kings County Cattlemen's Association .....	2
Million Dollar Crops .....	5
2017 Crop Highlights .....	6
Field Crops.....	9
Seed Crops .....	11
Vegetable Crops .....	12
Fruit and Nut Crops .....	15
Nursery Products .....	20
Fresno State – Young Cattlemen's Association .....	21
Livestock and Poultry .....	22
Livestock and Poultry Products .....	24
Apiary Products and Pollination Services .....	25
Industrial Crops .....	26
Fresno-Kings Counties CattleWomen .....	27
Sustainable Agriculture .....	29
Fresno County's 2017 Export Activity .....	31
Statistical Comparison .....	32
Growth in Fresno County Agriculture .....	33
Percentage by Crop Category .....	34

This report is also available at our internet site:

<http://www.co.fresno.ca.us/fresnoag>



# Fresno County's Top 10 Crops

Crop	2017 Rank	2017 Dollar Value	2016 Rank	2007 Rank	1997 Rank
Almonds	1	\$1,220,082,000	1	2	5
Grapes	2	951,231,000	2	1	1
Poultry *	3	605,610,000	3	4	3
Pistachios	4	517,043,000	7	18	26
Milk	5	441,214,000	6	3	6
Mandarins	6	427,934,000	11	+	+
Cattle & Calves	7	423,819,000	4	6	7
Tomatoes	8	295,092,000	5	5	4
Peaches	9	211,639,000	10	8	12
Oranges	10	203,505,000	9	9	9

*Includes commodity totals reported in the 'Other' category such as organic, by-products, processed etc.*

*\* Includes Turkeys, Chickens, Ducks, Geese, Gamebirds & Eggs*

*+ Not previously separated for ranking purposes*



# Fresno-Kings County Cattlemen's Association

Fresno-Kings County Cattlemen's Association is one of thirty-eight affiliates of the California Cattlemen's Association. California Cattlemen's Association (CCA) is headquartered in downtown Sacramento, just blocks from the state capitol, where issues are represented by a full-time CCA staff on behalf of California ranchers. As a non-profit trade association, CCA represents ranchers and beef producers in legislative and regulatory affairs. CCA is funded almost entirely by voluntary dues, who in turn determine the direction and policy of the organization. CCA is an affiliate of the National Cattlemen's Association with offices in Washington, D.C. and Denver, Co. Because of the tremendous natural resource base on which our members depend for their livelihoods, CCA lobbies the California state legislature, congress, and federal and state agencies on a wide range of issues including:

- Food safety and inspection
- Federal and state endangered species
- Beef quality assurance
- Noxious weeds
- Williamson Act
- Conservation programs

CCA also funds litigation and research to support California's beef cattle industry, and maintains a political action committee to support those candidates favorable to family ranchers and beef producers. CCA is extremely proud of its long-standing record of credibility, accomplishment and positive working relationship with policymakers throughout California and Washington, D.C., in representing beef cattle producers, the stewards of an American tradition. As environmentalists, food producers, business owners and taxpayers, CCA members look forward to continuing these relationships with federal, state and local government institutions.

Domestic cattle have been an important component of California's economic and social fabric since the establishment of the first Spanish mission in San Diego in the early 1700's. BY 1834, California's missions operated a herd of beef cattle estimated at 400,000 head. Under Mexican rule, large "ranchos" were established, and cattle hides and tallow fueled the state's economy. The Gold Rush during the 1800's brought hundreds of thousands of new citizens to the state, as well as new demand for beef. Many of today's ranches were established prior to or just following the discovery of gold at Sutter's Mill in 1848



# Fresno-Kings County Cattlemen's Association

Today, California's ranching enterprises are as diverse as any in the world. Ranchers own and/or manage approximately 38 million acres of privately and publicly owned rangelands. Most California ranches are family owned and operated, and many have been in the same family for four or five generations. The long-term success of ranching operations requires the careful stewardship of animals and the environment.



Regional and operational factors, as well as cattle breed, nutritional requirements, reproductive status and behavioral characteristics influence beef cattle production in California. California's geographical diversity, along with its climatic and environmental variability, has resulted in the state's highly complex livestock production industry.





## **Fresno Kings County Cattlemen's Association Board of Directors 2018**



President: Mark Thompson

Vice President: Jayne Robinson

Treasurer: Ed Huff	Director: Hal Stainbrook
Secretary: Tara Roth	Director: Monte Person
Director: Steve McDonald	Director: Brooke Helsel
Director: Randy Perry	Honorary Director: Neil McDougald
Director: Geoff Gates	Honorary Director: Cindy Tews

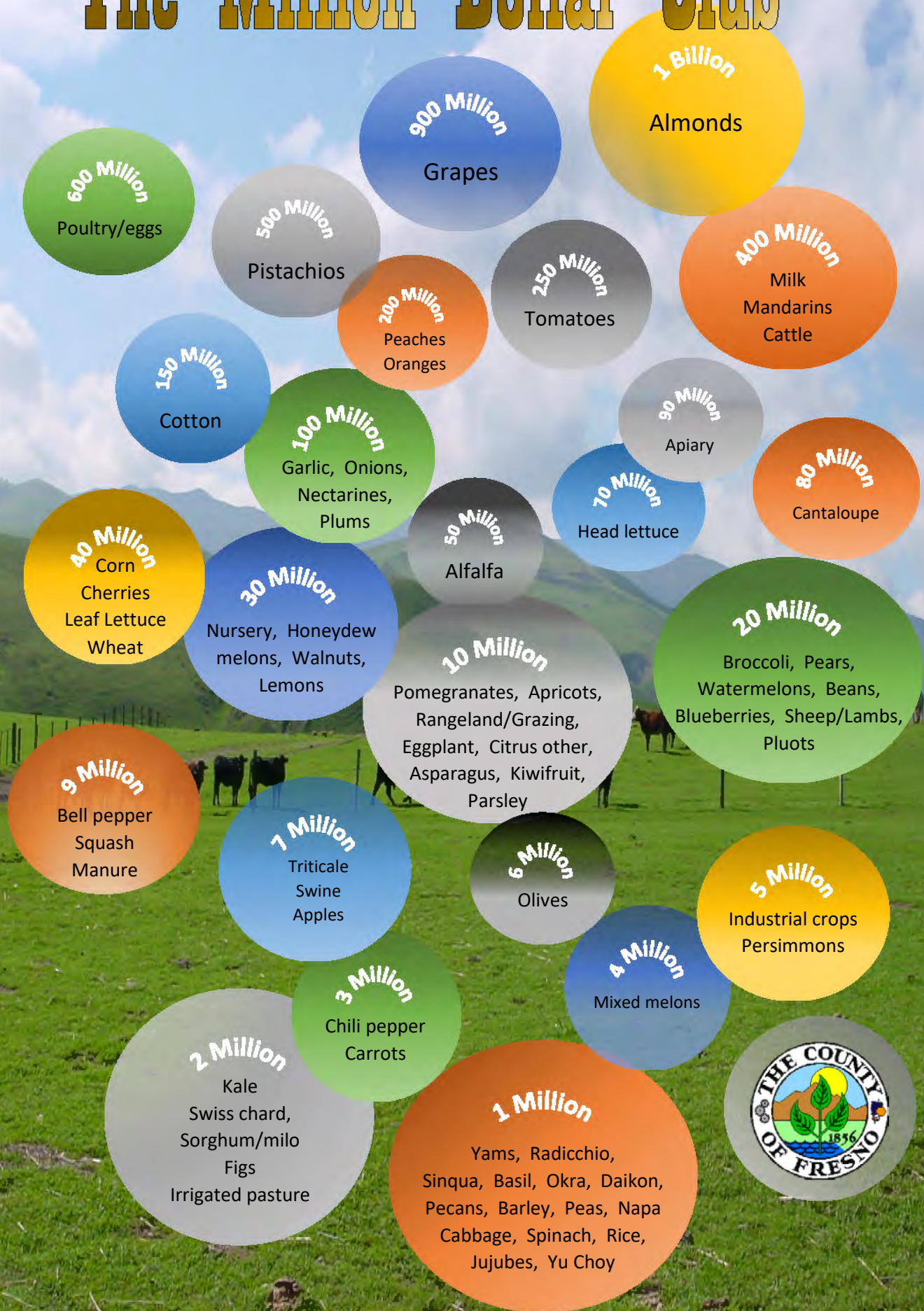
### **CATTLEMEN OF THE YEAR**

Clarence Akers	Brad Harlan	Neil Perkins	Walt Weldon
Chan Baker	Floyd Harlan	Randy Perry	Vernon Wynn
Ike Ball	Greg Harlan	Mike Pestorich	Darrell Zwang
Calvin Bell	Jess Jennings	Jay Robinson	All Past Winners
Azelea Biglioni	George Johnson	Dennis Roth	Tim Burk
Virginia Birdwell	Robert O. Johnson	Bonner Sample	John Harris
Morgan Blasingame	Sasha Lassotovitch	W.C. Jack Sample	Clarence Costa
Lawrence Cobb	Philip Martin	Walt Sechler	Mike Urrutia
Dan Forbes	Steven McDonald	Edwin Simpson	Bob Ferrera
Ted Forbes	Alan Milnes	Bob Simmons	Bob Hanson
Buster Ford	Aaron Nelson	Dr. William Smith	Phil Tews
C.F. Bunky Giles	Jim Nunez	Jess Tolle	Harry Habib
Kris Gudel	Harry Papadackis	Jim Tolle	Lawrence Coelho

**We would like to thank the Fresno-Kings County Cattlemen's Association and the Fresno Kings Counties CattleWomen for the contribution of so many beautiful photos to this report.**



# The Million Dollar Club





## 2017 CROP HIGHLIGHTS

### FIELD CROPS:

The total gross returns for field crops increased by 40.08 percent, from \$230,614,000 in 2016 to \$323,047,000 in 2017. The total value for all cotton also grew to \$170,105,000, which was an increase of \$66,901,000 dollars from the 2016 value mainly due to the increase in pima cotton acreage and value. The 2017 Pima acreage increased by a whopping 75.49 percent, this along with an increase in yield and price caused the total value to increase by 84.64 percent. The Upland variety of cotton did not do as well, the acreage decreased by 37.98 percent to 5,210 acres. Alfalfa hay acreage was also down this year by 3,666 acres, which lead to a decrease in the total value of 16.82 percent to \$38,200,000. Wheat hay increased again this year by \$7,975,000 to \$14,223,000, due to a small increase in acreage, combined with a yield per acre that more than doubled. Corn silage held steady with just a small decrease in harvested acreage and price per ton. Harvest acreage for wheat grain fell slightly to 25,600 acres, the yield per acre increased by 51.75 percent, leading to a total value of \$8,594,000.

### SEED CROPS:

The total gross returns for all seed crops increased by 29.19 percent or \$6,274,000 to \$27,765,000 for 2017. Certified alfalfa seed acreage decreased by 1,300 acres or 19.85 percent, which caused the total gross value to fall by \$3,015,000 to the 2017 total value of \$11,795,000.

### VEGETABLE CROPS:

For the second year in a row, vegetable crops total value decreased, from \$1,105,362,000 in 2016, to \$990,326,000 in 2017, or 10.4 percent. The total acreage in vegetable crops fell by 10,579 acres to 184,686 acres. Tomatoes fell from the number five spot to number eight on Fresno County's 10 Leading Crop list, due mainly to a large decrease in acreage harvested for processing tomatoes. Standard tomato harvested acreage increased, but with a decrease in both yield and price per ton, the total value fell 65.44 percent to \$24,759,000. Spring Head lettuce values were up a whopping 168.15 percent due to an unseasonably warm winter and heavy rainstorms that delayed planting in Oxnard, Santa Maria, and the Salinas Valley. Broccoli was another crop that was hit by the bad weather in the spring of 2017; the acreage fell by 20.41 percent to 3,840, while the value per ton increased by 14.56 percent. 2012 was the last year that garlic did not appear on the Fresno County's Top Ten list; a combination of a decrease in yield and price per ton had the gross value for fresh and processed garlic falling to \$144,450,000 from 2016's value of \$220,500,000. Harvested acreage fell in all the melon categories this year. The total melon acreage in the county fell by 2,701 acres, or 10.86 percent and the total value also decreased by 11.22 percent to the 2017 total of \$148,536,000.



### **FRUIT AND NUT CROPS:**

Fruit and nut crops increased in total gross value by \$788,778,000, to \$4,033,301,000, the first time it has surpassed the **four billion dollar** mark. For the fifth year in a row now almonds surpassed the billion dollar mark and held on to the number one spot on the Fresno County's Top Ten ranking. Grapes held onto the number two spot on the list, even though the acreage dropped by 14,175 acres or 7.96 percent. Raisin variety grapes all had an increase in the value per ton except for those packed for the fresh table market. The production per acre fell to 8.25 tons, from 9.38 or a 12.05 percent decrease. The only category within raisin variety grapes that showed an increase in the value per ton was the dried category, which increased the 2017 total value to \$232,200,000. Table variety grapes showed an increase in acreage and total tons per acre. Table variety grapes packed for the fresh market also increased in value (66.54%) due to the tons utilized increasing from 133,000 tons to 209,000 tons, along with an increase of \$97.00 in the value per ton. Oranges fell to the tenth place on the Top Ten list, even though both total acres harvested and total combined value increased to \$203,319,000. Both Navel and Valencia variety oranges showed a decrease in the production per acre, but an increase in the value per ton for those sold as fresh. Total value of peaches increased to \$202,970,000 while both Cling and Freestone types showed a decrease in production per acre. Pistachios increased in value to \$517,033,000 and moved up three spots to the number four spot on the Top Ten list. Cherries showed an increase in harvested acreage and production per acre, while the value per ton fell by 7.86 percent to \$3,389.00 dollars per ton. Walnut total production actually stayed the same (14,600 tons), but with an increase of \$203.00 per ton the total value increased to \$32,164,000.

### **NURSERY:**

The value of nursery products fell by \$77,939,000, to a total of \$38,247,000 in 2017 due in large part to shifting business patterns. Herbaceous Ornamentals, which includes (aquatic plants, potted plants, bedding plants, decorative plants, flats, annuals perennials and grasses), increased in value by 3.54 percent to \$4,267,000. Ornamental trees and shrubs increased across all categories; the total acres increased by 5 acres and the total value increased to \$10,846,000.

### **LIVESTOCK AND POULTRY:**

The total gross returns for livestock and poultry in 2017 was \$1,007,996,000 that was an increase of 5.64 percent or \$53,773,000 from the 2016 total of \$954,225,000. Cattle and calves decreased in value slightly by only 0.25 percent to \$423,819,000, due to a continued decrease in prices across all categories. Even though most categories decreased in value, slaughter stock sold increased by 3.16 percent, due to an increase in number of head sold and a \$0.02 increase in the price per hundredweight. Hogs and pigs decreased in value by 41.33 percent, due to a decrease in number of head sold and price per hundredweight. The value of sheep and lambs increased by \$3,559,000 due to an increase in the prices paid per hundredweight for both categories, along with increases



**LIVESTOCK AND POULTRY (continued):**

in the amount sold. The poultry and miscellaneous other category which includes chickens, turkeys, ducks, deer, geese, gamebirds, fish, goats, beneficial insects and vermiculture increased by \$56,423,000 from last year to \$552,252,000.

**LIVESTOCK AND POULTRY PRODUCTS:**

The total value for livestock and poultry products increased by \$88,445,000 or 21.41 percent to \$501,577,000. Milk increased in total value by 14.86 percent as the price of both marketed and manufacturing milk increased. The price of market milk increased from \$13.79 per hundredweight to \$16.42. Manure also increased up 6.31% to \$9,277,000.

**APIARY PRODUCTS AND POLLINATION SERVICES:**

Gross returns for apiary and pollination services was \$95,584,000 in 2017 up \$5,206,100 from 2016. Honey increased in total value by 40.02 percent due to an increase in the price received and the number of pounds sold. The total value of all pollination services increased by \$1,973,100, mostly due to the increase in the Trees, Fruit and Nut pollination value.

**INDUSTRIAL CROPS:**

Industrial crops increased in value 24.79% percent to \$5,909,100 from last year's value of \$4,735,200. The value of timber was up due to the substantial increase in total board feet that was harvested, which increased by 128,739,200 board feet. The "Other" category which includes poles, posts and split products, bark, biomass, compost, cones, ground cover, mulch, pomace, and wood fines fell to \$2,788,000 dollars.



Cattle typically graze lower elevation forage in the spring, and are then moved to higher elevation pastures during the summer months. Ranchers in the inter mountain areas generally harvest and store forage during the summer for winter-feeding. During the fall, cattle may graze crop residue, residual rangeland, or pasture forage. Cattle may be fed hay or some are transported out of the region during the winter months



**FRESNO COUNTY**
**FIELD CROPS**

CROP	YEAR	HARVESTED ACREAGE	PRODUCTION			VALUE				
			PER	TOTAL	UNIT	PER				
			ACRE			UNIT	TOTAL			
Corn										
	Silage	2017	24,857	20.41	507,000	ton	\$	45.00 <sup>a</sup>	\$	22,815,000
		2016	24,868	22.97	571,000	ton	\$	42.00 <sup>a</sup>	\$	23,982,000
Cotton										
	Upland Lint	2017	5,210	1,027.00 <sup>b</sup>	10,700 <sup>c</sup>	bale	\$	0.95 <sup>d</sup>	\$	5,123,000
		2016	8,400	1,710.00 <sup>b</sup>	29,000 <sup>c</sup>	bale	\$	0.81 <sup>d</sup>	\$	11,839,000
	Seed	2017			4,130	ton	\$	271.00	\$	1,119,000
		2016			10,400	ton	\$	259.00	\$	2,694,000
	Pima Lint	2017	69,845	1,470.00 <sup>b</sup>	205,000 <sup>c</sup>	bale	\$	1.40 <sup>d</sup>	\$	144,648,000
		2016	39,800	1,453.00 <sup>b</sup>	116,000 <sup>c</sup>	bale	\$	1.34 <sup>d</sup>	\$	78,342,000
	Seed	2017			79,400	ton	\$	242.00	\$	19,215,000
		2016			45,500	ton	\$	227.00	\$	10,329,000
Cotton Total <sup>e</sup>		2017	75,055						\$	170,105,000
		2016	48,200						\$	103,204,000
Hay										
	Alfalfa	2017	32,593	6.14	200,000	ton	\$	191.00	\$	38,200,000
		2016	36,259	7.57	275,000	ton	\$	167.00	\$	45,925,000
	Wheat	2017	20,400	4.71	96,100	ton	\$	148.00	\$	14,223,000
		2016	18,980	2.11	40,050	ton	\$	156.00	\$	6,248,000
	Other <sup>f</sup>	2017	1,182	2.08	2,460	ton	\$	124.00	\$	305,000
		2016	15,080	3.07	46,300	ton	\$	141.00	\$	6,528,000
Pasture and Range										
	Rangeland Grazing	2017	840,000			acre	\$	17.00	\$	14,280,000
		2016	840,000			acre	\$	17.00	\$	14,280,000
Wheat										
	Grain	2017	25,600	1.73	44,300	ton	\$	194.00	\$	8,594,000
		2016	27,310	1.14	31,100	ton	\$	219.00	\$	6,811,000



# FRESNO COUNTY

## FIELD CROPS

CROP	YEAR	HARVESTED ACREAGE	PRODUCTION		UNIT	VALUE			
			PER ACRE	TOTAL		PER UNIT	TOTAL		
Silage	2017	18,615	21.06	392,000	ton	\$ 38.00	\$		14,896,000
	2016	7,874	14.47	114,000	ton	\$ 29.00	\$		3,306,000
Other <sup>g</sup>	2017	59,240					\$		39,629,000
	2016	34,670					\$		20,330,000
Total	2017	1,097,542					\$		323,047,000
	2016	1,053,240					\$		230,614,000

a Field price

b Pounds of lint per acre

c 500 pounds lint per bale

d Price per pound, 504 pounds gross weight per bale

e Does not include cotton seed for planting

f Includes hay from: oats, sudan grass and winter forage

g Includes alfalfa (silage and grain), barley (forage and grain), beans (dried), cotton by-products, field stubble (includes acres not included in total field crop acreage), irrigated pasture, oat silage, rice (grain, bran and mixed feed), safflower, sorghum (silage and grain), straw, triticale (forage and grain), winter forage, **ORGANIC**: corn grain, oat hay, wheat grain





# FRESNO COUNTY

## SEED CROPS

CROP	YEAR	HARVESTED ACREAGE	PRODUCTION		UNIT	VALUE		
			PER ACRE	TOTAL		PER UNIT	TOTAL	
Alfalfa Certified	2017	5,250	685	3,596,000	lb	\$	3.28	\$ 11,795,000
	2016	6,550	675	4,421,000	lb	\$	3.35	\$ 14,810,000
Vegetable <sup>a</sup>	2017	1,570					\$	8,315,000
	2016	1,370					\$	5,893,000
Other <sup>b</sup>	2017	2,700					\$	7,655,000
	2016	1,340					\$	788,000
Total	2017	9,520					\$	27,765,000
	2016	9,260					\$	21,491,000

a Kale, lettuce (head & leaf), mizuna, mustard and onion

b Alfalfa non-certified, cotton (certified and non-certified), and wheat



California has more than 100 million acres of land, 38 million of which are range and pasture lands. Of these 38 million acres, approximately half are owned by the federal government, making many California ranchers heavily dependent on the availability of federal grazing permits.



**FRESNO COUNTY**
**VEGETABLE CROPS**

CROP	YEAR	HARVESTED ACREAGE	PRODUCTION		UNIT	VALUE		
			PER ACRE	TOTAL		PER UNIT	TOTAL	
Asparagus	2017	970	3.44	3,340	ton	\$ 3,387.00	\$ 11,313,000	
	2016	1,210	3.44	4,160	ton	\$ 3,875.00	\$ 16,120,000	
Broccoli <sup>a</sup>	2017	3,840	6.65	25,500	ton	\$ 1,133.00	\$ 28,892,000	
	2016	4,825	6.30	30,400	ton	\$ 989.00	\$ 30,066,000	
Corn, Sweet	2017	5,872	8.07	47,400	ton	\$ 487.00	\$ 23,084,000	
	2016	3,998	10.66	42,600	ton	\$ 331.00	\$ 14,101,000	
Eggplant <sup>b</sup>	2017	940	17.98	16,900	ton	\$ 839.00	\$ 14,179,000	
	2016	920	14.57	13,400	ton	\$ 759.00	\$ 10,171,000	
Garlic								220,500,000
Fresh/Processed	2017	25,060	5.39	135,000	ton	\$ 1,070.00	\$ 144,450,000	
	2016	21,468	6.85	147,000	ton	\$ 1,500.00	\$	
<b>Head Lettuce</b>								
Naked				8,600	ton			
Wrapped				38,900	ton			
Bulk				4,600	ton			
Spring	2017	3,420	15.23	52,100	ton	\$ 842.00	\$ 43,868,000	
Season Total	2016	3,090	13.43	41,500	ton	\$ 314.00	\$ 13,031,000	
Naked				9,500	ton			
Wrapped				41,000	ton			
Bulk				26,500	ton			
Fall	2017	4,130	18.64	77,000	ton	\$ 390.00	\$ 30,030,000	
Season Total	2016	3,420	20.06	68,600	ton	\$ 446.00	\$ 30,596,000	
<b>Head Lettuce</b>	<b>2017</b>	<b>7,550</b>		<b>129,100</b>			<b>\$ 73,898,000</b>	
<b>Totals</b>	<b>2016</b>	<b>6,510</b>		<b>110,100</b>			<b>\$ 43,627,000</b>	
Lettuce Leaf <sup>c</sup>	2017	3,940	9.16	36,100	ton	\$ 1,050.00	\$ 37,905,000	
	2016	4,394	15.73	69,100	ton	\$ 526.00	\$ 36,347,000	
<b>Melons</b>								
Cantaloupe <sup>a</sup>	2017	13,820	16.06	222,000	ton	\$ 369.00	\$ 81,918,000	
	2016	14,400	17.29	249,000	ton	\$ 339.00	\$ 84,411,000	
Honeydew <sup>a</sup>	2017	4,910	17.23	84,600	ton	\$ 416.00	\$ 35,194,000	
	2016	5,220	19.92	104,000	ton	\$ 515.00	\$ 53,560,000	



## FRESNO COUNTY

## VEGETABLE CROPS

CROP	YEAR	HARVESTED ACREAGE	PRODUCTION		UNIT	VALUE		
			PER ACRE	TOTAL		PER UNIT	TOTAL	
Mixed Melons	2017	669	15.55	10,400	ton	\$ 473.00	\$ 4,919,000	
	2016	1,960	14.59	28,600	ton	\$ 396.00	\$ 11,326,000	
Watermelon	2017	2,780	20.07	55,800	ton	\$ 475.00	\$ 26,505,000	
	2016	3,300	25.64	84,600	ton	\$ 213.00	\$ 18,020,000	
<b>Melon Total</b>	<b>2017</b>	<b>22,179</b>					<b>\$ 148,536,000</b>	
	<b>2016</b>	<b>24,880</b>					<b>\$ 167,317,000</b>	
<b>Onions</b>								
Fresh/Processed	2017	20,540	22.30	458,000	ton	\$ 279.00	\$ 127,782,000	
	2016	17,300	20.12	348,000	ton	\$ 263.00	\$ 91,524,000	
<b>Oriental Vegetables<sup>d</sup></b>	2017	1,252		12,620	ton	\$ 1,371.00	\$ 17,302,000	
	2016	1,130		13,700	ton	\$ 1,444.00	\$ 19,625,000	
<b>Pepper, Bell<sup>a</sup></b>	2017	650	18.15	11,800	ton	\$ 739.00	\$ 8,720,000	
	2016	450	17.13	7,710	ton	\$ 525.00	\$ 4,048,000	
<b>Pepper, Chili<sup>a</sup></b>	2017	590	13.25	7,820	ton	\$ 509.00	\$ 3,980,000	
	2016	1,150	16.61	19,100	ton	\$ 603.00	\$ 11,517,000	
<b>Squash<sup>e</sup></b>	2017	700	12.81	8,970	ton	\$ 985.00	\$ 8,836,000	
	2016	740	10.95	8,100	ton	\$ 577.00	\$ 4,674,000	
<b>Tomatoes</b>								
Standard and Cherry	2017	7,253	13.03	94,500	ton	\$ 262.00	\$ 24,759,000	
	2016	6,680	15.72	105,000	ton	\$ 689.00	\$ 72,345,000	
Processed	2017	73,390	51.70	3,794,000	ton	\$ 67.00	\$ 254,198,000	
	2016	90,380	49.44	4,468,000	ton	\$ 72.00	\$ 321,696,000	
<b>Tomatoes Total</b>	<b>2017</b>	<b>80,643</b>					<b>\$ 278,957,000</b>	
	<b>2016</b>	<b>97,060</b>					<b>\$ 394,041,000</b>	
<b>Other<sup>f</sup></b>	2017	9,960					\$ 62,492,000	
	2016	9,230					\$ 41,684,000	
<b>Total</b>	<b>2017</b>	<b>184,686</b>					<b>\$ 990,326,000</b>	
	<b>2016</b>	<b>195,265</b>					<b>\$ 1,105,362,000</b>	

<sup>a</sup> Includes fresh and processed

<sup>b</sup> Includes Chinese, Globe, Italian, Japanese, and mixed varieties

<sup>c</sup> Includes Red, Green, Butter, and Romaine varieties

# FRESNO COUNTY

## VEGETABLE CROPS

CROP	YEAR	HARVESTED ACREAGE	PRODUCTION		UNIT	VALUE	
			PER ACRE	TOTAL		PER UNIT	TOTAL

a Includes fresh and processed

b Includes Chinese, Globe, Italian, Japanese, and mixed varieties

c Includes Red, Green, Butter, and Romaine varieties

d Includes a choy, amaranth, bamboo, bitter melon, bok choy, chayote, daikon, doan gwa, gai choy, gailon, ginger, kabocha, lambsquarter, lemon grass, lo bok, long bean, malabar, mizuna, methi, moqua, mora, moringa (fruit and leaf), nagaimo, napa cabbage, ong choy, opo, sugar peas (fruit and leaf), snow pea (fruit & leaf), saluyote, sinqua, sugar cane, sour leaf, soy bean, taro (root and leaf), tatsoi, tong ho, yam (root and leaves), and yu choy

e Includes summer and winter varieties

f Includes arugula, succulent beans, succulent bean leaf, beets, cabbage (fresh and processed), carrots (fresh, processed), casava (root and leaf), cauliflower, celery, chamomile, collards, corn processed, cucumbers, dandelion green, gourd, gourd, jicama (yam beans), kale (fresh and processed), kohlrabi, leeks, mushrooms, mustard, okra, onions (green), parsnip, peas, peanuts, pennywort, pepper chili (leaf), potatoes, pumpkins (fresh & processed), purslane, radicchio, radish, rapini, rhubarb, rutabaga, salad mix, shallot, spinach, stevia, sunchokes, Swiss chard, tomatillo, turnips, watercress; **Herbs:** basil, chive, cilantro, dill, fennel, mint, oregano, parsley (fresh & dried), rosemary, tarragon, thyme, sage, misc; **ORGANIC:** corn sweet, garlic, leaf lettuce, onion (fresh and processed), pepper bell, squash (fresh and processed), tomato (processed) and watermelon





**FRESNO COUNTY**
**FRUIT AND NUT CROPS**

CROP	YEAR	HARVESTED ACREAGE	PRODUCTION		UNIT	VALUE	
			PER ACRE	TOTAL		PER UNIT	TOTAL
<b>Almonds <sup>a</sup></b>	2017	228,109	1.13	258,000	ton	\$ 4,526.00	\$ 1,167,708,000
	2016	215,317	1.17	252,000	ton	\$ 4,633.00	\$ 1,167,516,000
<b>Almond Hulls</b>	2017			429,000	ton	\$ 68.00	\$ 29,172,000
	2016			407,000	ton	\$ 64.00	\$ 26,048,000
<b>Almond Total</b>	<b>2017</b>						<b>\$ 1,196,880,000</b>
	<b>2016</b>						<b>\$ 1,193,564,000</b>
<b>Apples <sup>a</sup></b>	Fresh 2017	440	9.64	4,240	ton	\$ 1,492.00	\$ 6,326,000
	2016	664	9.22	6,120	ton	\$ 1,063.00	\$ 6,506,000
<b>Apricots <sup>a</sup></b>	2017	1,255	7.19	9,024	ton	\$ 1,550.00	\$ 13,987,000
	2016	1,309	9.93	13,000	ton	\$ 1,234.00	\$ 16,042,000
<b>Blueberries <sup>a</sup></b>	2017	1,190	3.45	4,100	ton	\$ 6,017.00	\$ 24,670,000
	2016	1,100	1.89	2,080	ton	\$ 3,786.00	\$ 7,875,000
<b>Cherries <sup>e</sup></b>	2017	3,951	3.42	13,500	ton	\$ 3,389.00	\$ 45,752,000
	2016	3,914	2.22	8,690	ton	\$ 3,678.00	\$ 31,962,000
<b>Lemons <sup>a</sup></b>	Fresh 2017	2,771	19.52	54,100	ton	\$ 580.00	\$ 31,378,000
	2016	2,844	13.41	38,100	ton	\$ 1,037.00	\$ 39,510,000



**FRESNO COUNTY**
**FRUIT AND NUT CROPS**

CROP	YEAR	HARVESTED ACREAGE	PRODUCTION		UNIT	VALUE		
			PER	TOTAL		PER		TOTAL
			ACRE			UNIT	UNIT	
Oranges								
Navel <sup>a</sup>	2017	26,423	13.08					
	2016	25,959	16.79					
Fresh	2017			297,000	ton	\$	626.00	\$ 185,922,000
	2016			388,000	ton	\$	430.00	\$ 166,840,000
Processed	2017			48,600	ton	\$	40.00	\$ 1,944,000
	2016			47,800	ton	\$	58.00	\$ 2,772,000
Valencia	2017	2,388	11.93					
	2016	2,050	17.70					
Fresh	2017			20,500	ton	\$	682.00	\$ 13,981,000
	2016			31,500	ton	\$	608.00	\$ 19,152,000
Processed	2017			8,000	ton	\$	184.00	\$ 1,472,000
	2016			4,780	ton	\$	180.00	\$ 860,000
Orange Total	2016	28,811						\$ 203,319,000
	2015	28,009						\$ 189,624,000
Mandarin/ Tangarine	2017	23,185	11.50	267,000	ton	\$	1,602.00	\$ 427,734,000
Tangarine <sup>a, f</sup>	2016	18,202	13.60	248,000	ton	\$	758.00	\$ 187,984,000
Citrus, other <sup>a, b</sup>								
Fresh	2017	1,771	12.95	22,900	ton	\$	556.00	\$ 12,932,000
	2016	1,317	10.60	14,000	ton	\$	618.00	\$ 8,652,000





**FRESNO COUNTY**
**FRUIT AND NUT CROPS**

CROP	YEAR	HARVESTED ACREAGE	PRODUCTION		UNIT	VALUE		
			PER ACRE	TOTAL		PER UNIT	TOTAL	
Grapes								
Raisin	2017	83,278	8.25					
Varieties <sup>a</sup>	2016	82,282	9.38					
Crushed	2017			67,600	ton	\$	299.00	\$ 20,212,000
	2016			122,000	ton	\$	187.00	\$ 22,814,000
Dried	2017			129,000 <sup>c</sup>	ton	\$	1,800.00	\$ 232,200,000
	2016			133,000 <sup>c</sup>	ton	\$	1,100.00	\$ 146,300,000
Fresh	2017			11,200	ton	\$	1,498.00	\$ 16,778,000
	2016			17,600	ton	\$	1,526.00	\$ 26,858,000
Juice	2017			1,350	ton	\$	833.00	\$ 1,125,000
	2016			7,200	ton	\$	722.00	\$ 5,198,000
Table Varieties	2017	20,970	13.23					
	2016	20,260	7.28					
Crushed	2017			18,600	ton	\$	259.00	\$ 4,817,000
	2016			12,400	ton	\$	184.00	\$ 2,282,000
Fresh	2017			209,000	ton	\$	1,719.00	\$ 359,271,000
	2016			133,000	ton	\$	1,622.00	\$ 215,726,000
Dried	2017			10,600 <sup>c</sup>	ton	\$	1,322.00	\$ 14,013,000
	2016			452 <sup>c</sup>	ton	\$	1,175.00	\$ 531,000
Wine Varieties <sup>a</sup>	2017	59,654	13.33					
	2016	75,533	10.00					
Crushed	2017			736,000	ton	\$	308.00	\$ 226,688,000
	2016			689,000	ton	\$	306.00	\$ 210,834,000
Juice	2017			59,200	ton	\$	1,019.00	\$ 60,325,000
	2016			66,400	ton	\$	1,178.00	\$ 78,219,000
Grape Total	2017	163,902					\$	935,429,000
	2016	178,075					\$	708,762,000

**FRESNO COUNTY**
**FRUIT AND NUT CROPS**

CROP	YEAR	HARVESTED ACREAGE	PRODUCTION		UNIT	VALUE		
			PER ACRE	TOTAL		PER UNIT	TOTAL	
Kiwifruit	2017	1,560	3.09	4,820	ton	\$ 2,321.00	\$ 11,187,000	
	2016	587	1.77	1,040	ton	\$ 1,273.00	\$ 1,324,000	
Nectarines <sup>a</sup>	2017	9,582	7.95	76,200	ton	\$ 1,641.00	\$ 125,044,000	
	2016	9,652	10.46	101,000	ton	\$ 1,218.00	\$ 123,018,000	
<b>Peaches</b>								
Cling <sup>a</sup>	2017	1,609	17.13	27,600	ton	\$ 454.00	\$ 12,530,000	
	2016	1,354	18.17	24,600	ton	\$ 491.00	\$ 12,079,000	
Freestone <sup>a</sup>	2017	13,217	8.70	115,000	ton	\$ 1,656.00	\$ 190,440,000	
	2016	13,174	10.93	144,000	ton	\$ 1,238.00	\$ 178,272,000	
<b>Peaches Total</b>	<b>2017</b>	<b>14,826</b>					<b>\$ 202,970,000</b>	
	<b>2016</b>	<b>14,528</b>					<b>\$ 190,351,000</b>	
Pears, all <sup>a</sup>	2017	878	23.23	20,400	ton	\$ 1,326.00	\$ 27,050,000	
	2016	1,202	19.30	23,200	ton	\$ 1,263.00	\$ 29,302,000	
Persimmons	2017	889	7.73	6,870	ton	\$ 835.00	\$ 5,737,000	
	2016	470	4.52	2,120	ton	\$ 1,302.00	\$ 2,760,000	
Pistachios <sup>a</sup>	2017	101,910	1.19	121,000	ton	\$ 4,273.00	\$ 517,033,000	
	2016	93,986	1.54	145,000	ton	\$ 1,746.00	\$ 253,170,000	
Plums <sup>a</sup>	2017	9,548	7.72	73,700	ton	\$ 1,368.00	\$ 100,822,000	
	2016	9,336	9.15	85,400	ton	\$ 1,540.00	\$ 131,516,000	
Plums, dried <sup>a</sup>	2017	977	2.19	2,140	ton	\$ 2,200.00	\$ 4,708,000	
	2016	969	2.98	2,890	ton	\$ 2,176.00	\$ 6,289,000	
Pluots <sup>a, f</sup>	2017	1,262	8.72	11,000	ton	\$ 1,836.00	\$ 20,196,000	
	2016	1,200	8.31	9,970	ton	\$ 1,970.00	\$ 19,641,000	
Pomegranates <sup>a</sup>	2017	3,568	10.48	37,400	ton	\$ 444.00	\$ 16,606,000	
	2016	3,880	10.06	39,030	ton	\$ 362.00	\$ 14,129,000	





FRESNO COUNTY

FRUIT AND NUT CROPS

CROP	YEAR	HARVESTED ACREAGE	PRODUCTION		UNIT	VALUE	
			PER ACRE	TOTAL		PER UNIT	TOTAL
Walnuts <sup>a</sup>	2017	8,422	1.73	14,600	\$	2,203.00	\$ 32,164,000
	2016	8,026	1.82	14,600	\$	2,000.00	\$ 29,200,000
Other <sup>d</sup>	2017	10,887					\$ 71,377,000
	2016	7,409					\$ 56,658,000
Total	2017	619,694					\$ 4,033,301,000
	2016	601,996					\$ 3,247,839,000

<sup>a</sup> Additional acreage that is included in other fruit and nut crops: 411 acres apples (processed), 99 apricots (dried), 21 acres raisin grapes (processed), 523 acres wine grapes (fresh & dried). 533 acres peaches freestone (processed), 57 peaches cling (fresh); **ORGANIC:** 3,398 acres almonds, 31.4 apples, 10.6 acres apricots, 48 acres blueberries, 2,341 acres raisin grapes (fresh, crushed and dried), 1 acres wine grapes (crushed), .1 acre lemons, 10 acres mandarins (fresh), 176 acres nectarines, 18.8 acres navel oranges (fresh), 17 acres other citrus, 359 acres peaches freestone (fresh & processed), 35 acres pears, 3.14 acres pistachios, 99.25 acres plums (fresh & dried), 26.75 acres pluots, 169 acres pomegranates, 65 acres walnuts

<sup>b</sup> Includes citron, lime, grapefruit, pomelo and tangelo

<sup>c</sup> Tonage is reported as dried tons

<sup>d</sup> Includes almonds (shells, inedibles), apples (processed), apricots (juice & culls), blackberries, boysenberries, dates, figs (fresh, dried and substandard), grape raisins (processed & by-products), grape (leaves), grape wine (dried, fresh), guava, jojoba bean, jujubes, kumquats, lemons (processed), mulberry, olives (oil & canned), other citrus (processed), peach (freestone-processed & cling-fresh), pecans, quince, raspberries and strawberries; **ORGANIC:** almonds (meats and hulls), apples, apricots, blueberries, figs (dried, substandard), grape, raisin (fresh, dried & crushed), grape wine (crushed), lemons, mandarins, nectarines, orange navel (fresh), other citrus, peaches freestone (fresh, processed), pears, pistachios, plums (fresh & dried), pluots, pomegranates (fresh), walnuts

<sup>e</sup> Includes conventional and organic

<sup>f</sup> Includes pluot, plumcot or other interspecific varieties acres; conventional and organic



## FRESNO COUNTY

### NURSERY PRODUCTS

CROP	YEAR	ACRES	QUANTITY	UNIT	VALUE
Herbaceous	2017	16	4,172,000	<sup>b</sup>	\$ 4,267,000
Ornamentals <sup>a</sup>	2016	16	3,816,000	<sup>b</sup>	\$ 4,121,000
Ornamental Trees	2017	31	1,212,000	plants	\$ 10,846,000
and Shrubs	2016	26	416,000	plants	\$ 4,931,000
Other <sup>c</sup>	2017	334	257,625,000	units	\$ 23,134,000
	2016	328	253,464,000	units	\$ 107,134,000
Total	2017	381			\$ 38,247,000
	2016	370			\$ 116,186,000

a Includes aquatic plants, potted plants, bedding plants, decorative plants, flats, annuals, perennials and grasses

b Includes flats, dozens, cans, seedlings and single plants and trees

c Includes bareroot fruit trees, Christmas trees, citrus (budwood and trees), grape (rootings and cuttings), vegetable transplants, and turf (in square feet)





# Fresno State - Young Cattlemen's Association

The Young Cattlemen's Association functions as a student club or organization within the Department of Animal Sciences and Agricultural Education Department at California State University, Fresno. The students in this group are involved in helping to organize and conduct all of the activities that are part of the beef program at Fresno State. In addition, they participate with a number of local agricultural groups or organizations including both the Fresno-Kings and Madera County Cattlemen's Associations. Both of these organizations have been supportive of this group since its inception.



Fresno State students were instrumental in the development of the Young Cattlemen's Club or Association on a statewide basis. Fresno State students have been very involved in the statewide group over the years and many of the Fresno State students have served as statewide officers.

The purpose and goals of the organization include:

- ✓ Provide students an opportunity to gain additional education, leadership and career enhancement.
- ✓ Provide students an opportunity to interact with other students that are also interested in the beef industry.
- ✓ Provide students an opportunity to develop contacts and relationships with producers that are engaged in the beef, meats and livestock industries.
- ✓ Create additional opportunities for students in terms of career enhancement.



**FRESNO COUNTY**
**LIVESTOCK AND POULTRY**

ITEM	YEAR	PRODUCTION		UNIT	VALUE		
		NO. OF	TOTAL		PER	TOTAL	
		HEAD	LIVEWEIGHT		UNIT		
<b>Cattle and Calves</b>							
<b>Beef</b>							
Breeding Stock							
Common	2017	1,220		head	\$ 2,226.00	\$	2,716,000
	2016	1,200		head	\$ 2,241.00	\$	2,689,000
Registered	2017	310		head	\$ 3,822.00	\$	1,185,000
	2016	300		head	\$ 4,665.00	\$	1,400,000
Feeders	2017	27,000	141,000	cwt	\$ 118.00	\$	16,638,000
	2016	26,700	140,000	cwt	\$ 123.00	\$	17,220,000
Calves	2017	27,000	81,000	cwt	\$ 145.20	\$	11,761,000
	2016	26,700	80,000	cwt	\$ 152.40	\$	12,192,000
Slaughter Stock	2017	317,000	1,443,000 <sup>a</sup>	cwt	\$ 121.25	\$	174,964,000
	2016	304,000	1,399,000 <sup>a</sup>	cwt	\$ 121.23	\$	169,601,000
<b>Dairy</b>							
Breeding Stock	2017	83,800		head	\$ 1,609.00	\$	134,834,000
	2016	73,200		head	\$ 1,831.00	\$	134,029,000
Feeders	2017	53,100	313,000	cwt	\$ 80.58	\$	25,222,000
	2016	54,900	342,000	cwt	\$ 90.01	\$	30,783,000
Calves	2017	100,000	301,000	cwt	\$ 103.61	\$	31,187,000
	2016	89,000	267,000	cwt	\$ 113.52	\$	30,310,000
Cull Stock	2017	30,700	400,000	cwt	\$ 63.28	\$	25,312,000
	2016	31,700	413,000	cwt	\$ 64.53	\$	26,651,000
<b>Cattle and Calves</b>	<b>2017</b>					<b>\$</b>	<b>423,819,000</b>
<b>Total</b>	<b>2016</b>					<b>\$</b>	<b>424,875,000</b>



# FRESNO COUNTY

## LIVESTOCK AND POULTRY

		PRODUCTION				VALUE		
		NO. OF	TOTAL	PER				
ITEM	YEAR	HEAD	LIVEWEIGHT	UNIT	UNIT		TOTAL	
Hogs and Pigs								
Market Pigs and	2017	36,700	91,000	cwt	\$	80.38	\$ 7,315,000	
Slaughter Stock	2016	43,100	108,000	cwt	\$	115.44	\$ 12,468,000	
Sheep and Lambs								
Slaughter Stock								
Lambs	2017	72,500	92,800	cwt	\$	252.00	\$ 23,386,000	
	2016	71,000	90,900	cwt	\$	219.00	\$ 19,907,000	
Sheep	2017	8,500	13,600	cwt	\$	90.00	\$ 1,224,000	
	2016	8,300	13,300	cwt	\$	86.00	\$ 1,144,000	
Poultry and	2017						\$ 552,252,000	
Misc. Other <sup>b</sup>	2016						\$ 495,829,000	
Total	2017						\$ 1,007,996,000	
	2016						\$ 954,223,000	

a Net gain

b Includes chickens, deer, ducks, fish, gamebirds (chukar, guinea hen, pheasant, pigeon and quail); geese, goats, insects (beneficial); and turkeys



# FRESNO COUNTY

## LIVESTOCK AND POULTRY PRODUCTS

CROP	YEAR	PRODUCTION	UNIT	VALUE		
				PER UNIT		TOTAL
Manure <sup>a</sup>	2017	2,161,000	ton	\$	4.27	\$ 9,227,000
	* 2016	1,933,000	ton	\$	4.49	\$ 8,679,000
<b>Milk</b>						
Manufacturing	2017	15,600	cwt	\$	18.46	\$ 288,000
	2016	28,200	cwt	\$	15.79	\$ 445,000
Market <sup>b</sup>	2017	26,853,000	cwt	\$	16.42	\$ 440,926,000
	2016	27,823,000	cwt	\$	13.79	\$ 383,679,000
<b>Milk Total</b>	<b>2017</b>					<b>\$ 441,214,000</b>
	<b>2016</b>					<b>\$ 384,124,000</b>
<b>Other</b>	<sup>c</sup> 2017					\$ 55,408,000
	2016					\$ 24,288,000
<b>Total</b>	<b>2017</b>					<b>\$ 505,849,000</b>
	* <b>2016</b>					<b>\$ 417,091,000</b>

a Includes cow and poultry manure

b Includes cow milk (conventional and organic) and goat milk

c Includes chicken, duck, and turkey commercial and hatching eggs, goose feathers/down and wool

\* REVISED



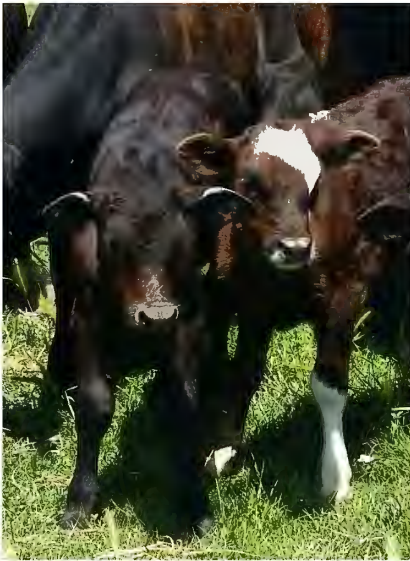
The Cattlemen's and Cattlewomen's support youth in agriculture through various programs, events, scholarships and other 4-H, FFA and Young Cattlemen's functions all year round. Above, Courtney Blasingame (left) and Cindy Tews (right) present toolboxes to two deserving showmen at the Big Fresno Fair. Sponsors have presented more than 130 toolboxes over the past three years at the Fresno Fair Junior Livestock Auction.

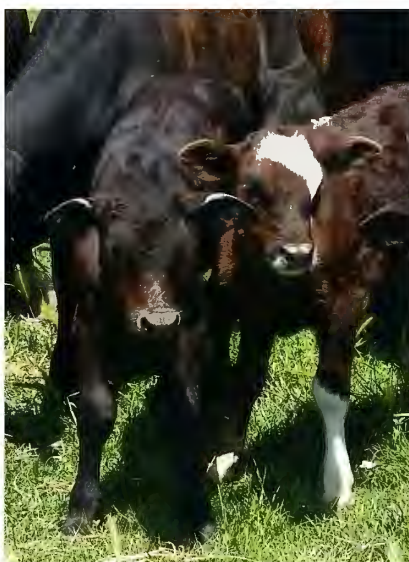


**FRESNO COUNTY**

**APIARY PRODUCTS AND POLLINATION SERVICES**

ITEM	YEAR	PRODUCTION TOTAL	UNIT	VALUE	
				PER UNIT	TOTAL
Apiary Products <sup>a</sup>					
Honey	2017	3,341,000	lb	\$ 2.46	\$ 8,219,000
	2016	2,822,000	lb	\$ 2.08	\$ 5,870,000
Beeswax	2017	405,000	lb	\$ 3.15	\$ 1,276,000
	2016	101,000	lb	\$ 3.88	\$ 392,000
Pollination <sup>b</sup>					
Seed <sup>c</sup>	2017			\$	993,000
	2016			\$	1,102,000
Trees, Fruit and Nut <sup>d</sup>	2017			\$	83,668,000
	2016			\$	76,509,000
Melon <sup>e</sup>	2017			\$	1,168,000
	2016			\$	6,443,000
Vegetable <sup>f</sup>	2017			\$	260,000
	2016			\$	61,900
Total	2017			\$	95,584,000
	2016			\$	90,377,900





<sup>a</sup> Reflects bee colonies registered in Fresno County by commercial and semi-commercial beekeepers:  
2017-69,747 colonies; 2016 – 62,186 colonies

<sup>b</sup> Reflects value of pollination by all bee colonies located in Fresno County for pollination services during 2017

<sup>c</sup> Alfalfa, kale, lettuce, onion and misc. vegetable

<sup>d</sup> Almond, apple, blackberry, blueberry, cherry, kiwifruit, pear, plum, pluot, pomegranate and prune

<sup>e</sup> Cantaloupe, honeydew, watermelons and mixed melons

<sup>f</sup> Bell pepper, chili pepper, cucumber and squash



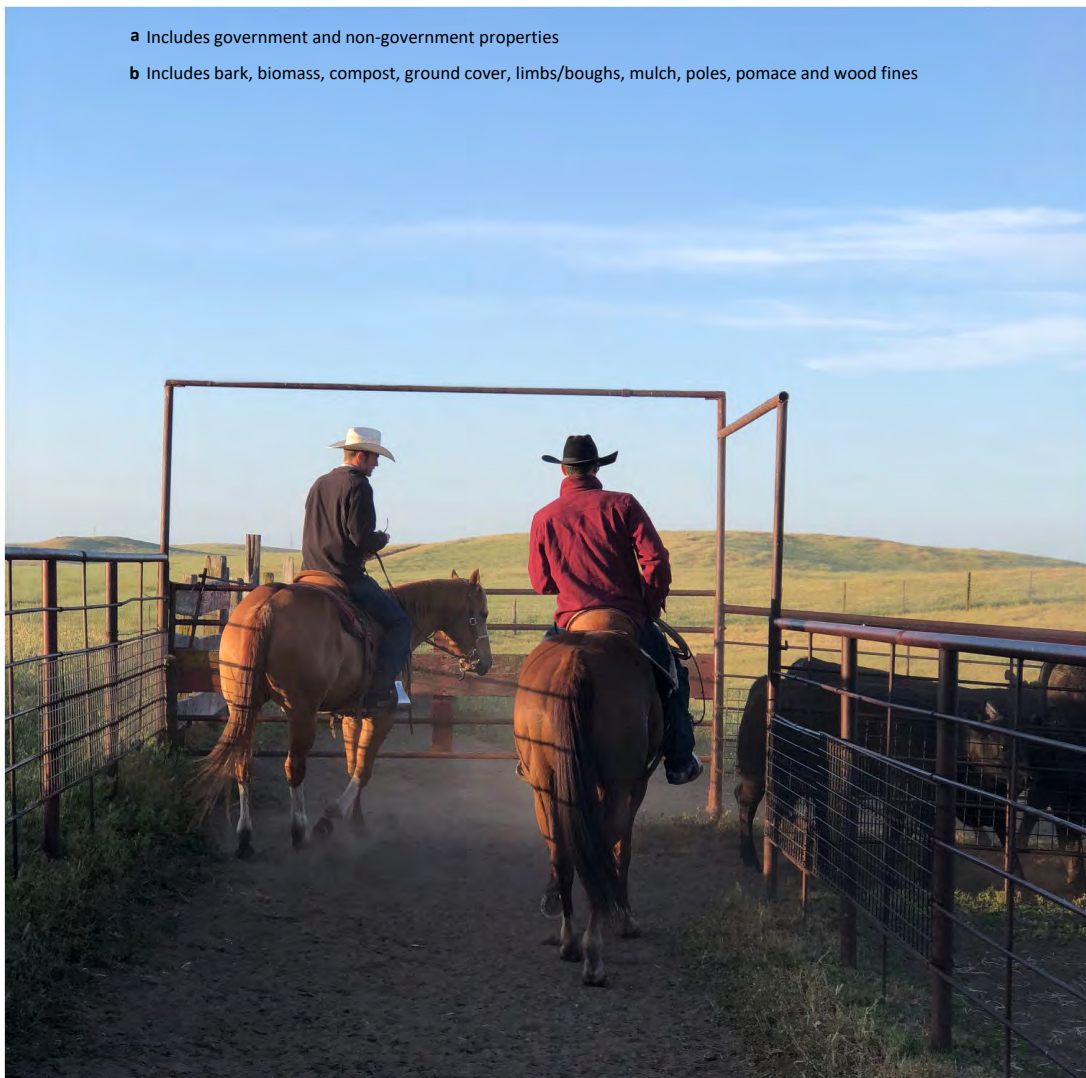
## FRESNO COUNTY

### INDUSTRIAL CROPS

CROP	YEAR	PRODUCTION	UNIT	VALUE	
Timber <sup>a</sup>	2017	192,413,000	board feet	\$	3,115,000
	2016	63,673,800	board feet	\$	1,417,000
Firewood	2017	1,213	cord	\$	6,100
	2016	1,440	cord	\$	7,200
Other <sup>b</sup>	2017			\$	2,788,000
	2016			\$	3,311,000
Total	2017			\$	5,909,100
	2016			\$	4,735,200

<sup>a</sup> Includes government and non-government properties

<sup>b</sup> Includes bark, biomass, compost, ground cover, limbs/boughs, mulch, poles, pomace and wood fines



Fresno County has all aspects of the cattle industry - cow-calf operations, stocker operations, feedlots, and processing/packing plants - and produces both grain-finished and grass-finished beef.



# Fresno-Kings Counties CattleWomen

On the night of April 21st, 1956, while a group of ladies were waiting for their husbands to break from a Cattlemen's meeting in Clovis, the Fresno Kings Counties CowBelles were founded.

The goal of the Fresno-Kings Counties CowBelles, a non-profit organization later renamed Fresno-Kings Counties CattleWomen, is to promote friendship and better public relations for the cattle and agricultural industries, to educate the public about the benefits of beef and beef by-products, and to assist and cooperate with both the Cattlemen's and CattleWomen's Associations on the County, State, and National Levels.

Throughout the years, the organization has done much to achieve these goals by educating students in the classroom and on the ranch, providing scholarships for agriculture-oriented students, cooking demonstrations at fairs, providing recipes to consumers, and presenting the Beef Industry in a favorable light.

Fresno-Kings Counties CattleWomen educates local communities about the importance of agriculture and nutrition. They encourage future leaders by supporting organizations such as the Future Farmers of America, 4-H Clubs and beef exhibitors at the Fresno District Fair; as well as supporting and informing future business leaders, government officials and citizens. They also participate in local events such as Kings and Fresno counties Farm Days, the Central California Blood Center Rodeo Blood Drive, but most importantly, annually giving \$10,000 in scholarships to hard working, aspiring students pursuing a career in beef and other agricultural related fields.





## **Fresno Kings Counties CattleWomen**

### **Board of Directors 2018**

President: Cortney Blasingame

Vice President: Brooke Helsel

Secretary: Brenda Armstrong

Board Member: Suzanne Ward

Treasurer: Kate Horstmann

Board Member: Kris Weber

Board Member: Lynn Tweedy

Board Member: Amy Lynn Alkire

### **COWBELLES OF THE YEAR**

*These ladies have devoted their time and efforts to the organization and its goals. They were nominated by the previous year's CowBelle of the Year*

1961 Minnie Johnson	1980 Jo Zwang	1999 Patty Holman
1962 Leona Simpson	1981 Sally Sharer (Tuttle)	2000 Martha Holmes
1963 Ella Craven	1982 Gerry Freeman	2001 Shirley Jennings
1964 Ardella Long	1983 Judy Estill	2002 Peggy Rocha
1965 Virginia Perkins	1984 Doris Johnson	2003 Laura Johnson
1966 Azalea Biglione	1985 Frances Peterson	2004 Brooke Prewitt
1967 Ethel Baker	1986 Marion Long	2005 Susan Johnson
1968 Libby Forbes	1987 Marilyn Dale	2006 Betsy Cockrell
1969 Margaret Tolle	1988 Lucy Cobb	2007 Sue Ann Johnson
1970 Marian Weldon	1989 Jean Bell	2008 Terrie Valdero
1971 Jean Evans	1990 Lillian Chester	2009 All Past CowBelles
1972 Sophia Blasingame Ayers	1991 Lee Lassatovitch	2010 Suzanne Ward
1973 Mary Leshner	1992 Jean Grant	2011 Mary Lou Slender
1974 Opal Johnson	1993 Nada Gerard	2012 Jana Triffon
1975 Mary Enos	1994 LeeAnn Ketscher	2013 Lynn Tweedy
1976 Ramona Hacker (Montross)	1995 Nettie Drake	2015 Brenda Armstrong
1977 Mary Tolle	1996 Sally Behling	2016 Kate Horstmann
1978 Betty Robinson	1997 Michelle McDonald	2017 Brooke Helsel
1979 Joye Forbes	1998 Robin Rogers-Dale	

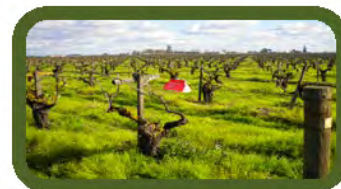


## FRESNO COUNTY

### SUSTAINABLE AGRICULTURE

#### 2017 BIOLOGICAL CONTROL ACTIVITIES

PEST	B.C. AGENT/MECHANISM	ACTIVITY
Glassy-winged sharpshooter, <i>Homalodisca vitripennis</i>	- <i>Gonatocerus triguttatus</i> - <i>Gonatocerus morrilli</i> - <i>Gonatocerus morgani</i>	CDFA released parasitoids species and monitored for evidence GWSS egg parasitism



#### 2016 DETECTION ACTIVITIES

<u>INSECT</u>	<u>TRAPS DEPLOYED</u>	<u>RESULTS</u>
European Grapevine Moth, <i>Lobesia botrana</i>	7458	
Glassy-winged sharpshooter, <i>Homalodisca vitripennis</i>	3427	Multiple residential/commercial captures (properties treated)
Asian citrus psyllid, <i>Diaphorina citri</i>	3432	15 captures
Light brown apple moth, <i>Epiphyas postvittana</i>	717	
Mediterranean fruit fly, <i>Ceratitis capitata</i>	716	
Gypsy moth, <i>Lymantria dispar</i>	482	
Oriental fruit fly, <i>Bactrocera dorsalis</i>	718	
Melon fruit fly, <i>Bactrocera cucurbitae</i>	369	
Japanese beetle, <i>Popillia japonica</i>	353	
Apple maggot, <i>Rhagoletis pomonella</i>	40	
Western cherry fruit fly, <i>Rhagoletis indifferens</i>	32	

**FRESNO COUNTY****SUSTAINABLE AGRICULTURE (continued)**

PEST	ACTIVITY	RESULT
Glassy-winged sharpshooter	7,265 - Bulk citrus inspections	None detected

**2017 PEST ERADICATION/MANAGEMENT ACTIVITIES****ERADICATION**

Rush Skeletonweed - 780 acres surveyed  
52 acres infested  
4.05 net acres treated  
Pink Bollworm - 74,355 cotton acres  
0 Plowdown non-compliance

**MANAGEMENT**

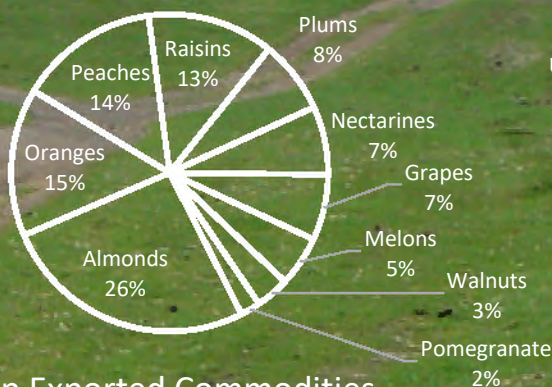
Perennial Pepperweed - 2,905 acres surveyed / 367.25 acres infested  
24.65 net acres treated  
Glassy-winged sharpshooter - 5,610 properties treated





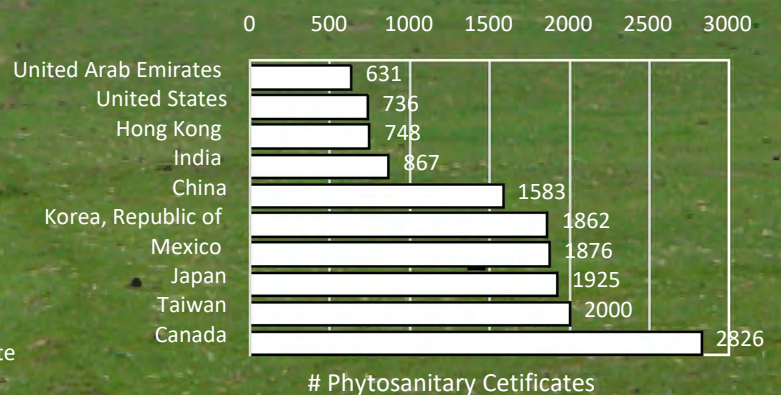
# Fresno County Exports

In 2017, 18,604 phytosanitary certificates were issued for 133 commodities to markets in 97 countries around the world. In addition, 5,332 acres of export seed fields were inspected and certified during the 2017 crop season.



Top Exported Commodities

Top 10 Export Shipments



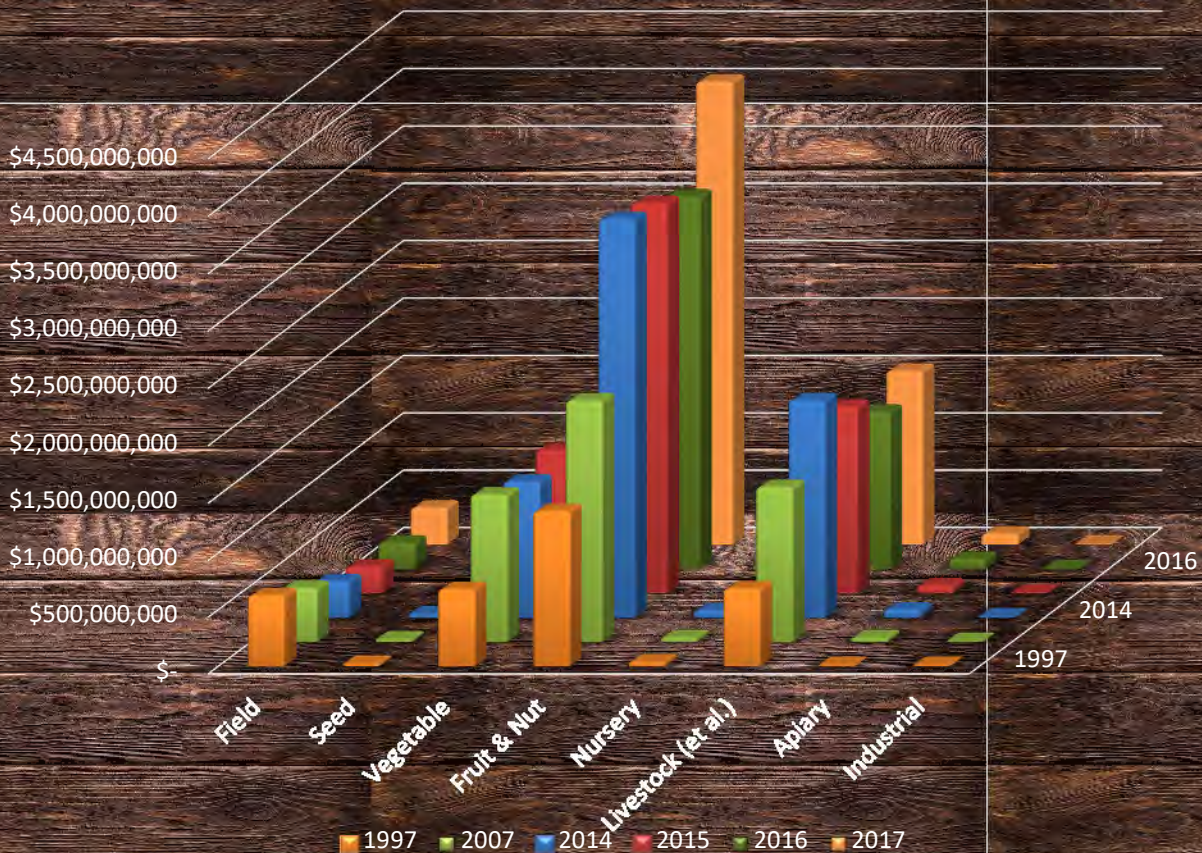
# Phytosanitary Cetificates



# Fresno County Gross Production by Year

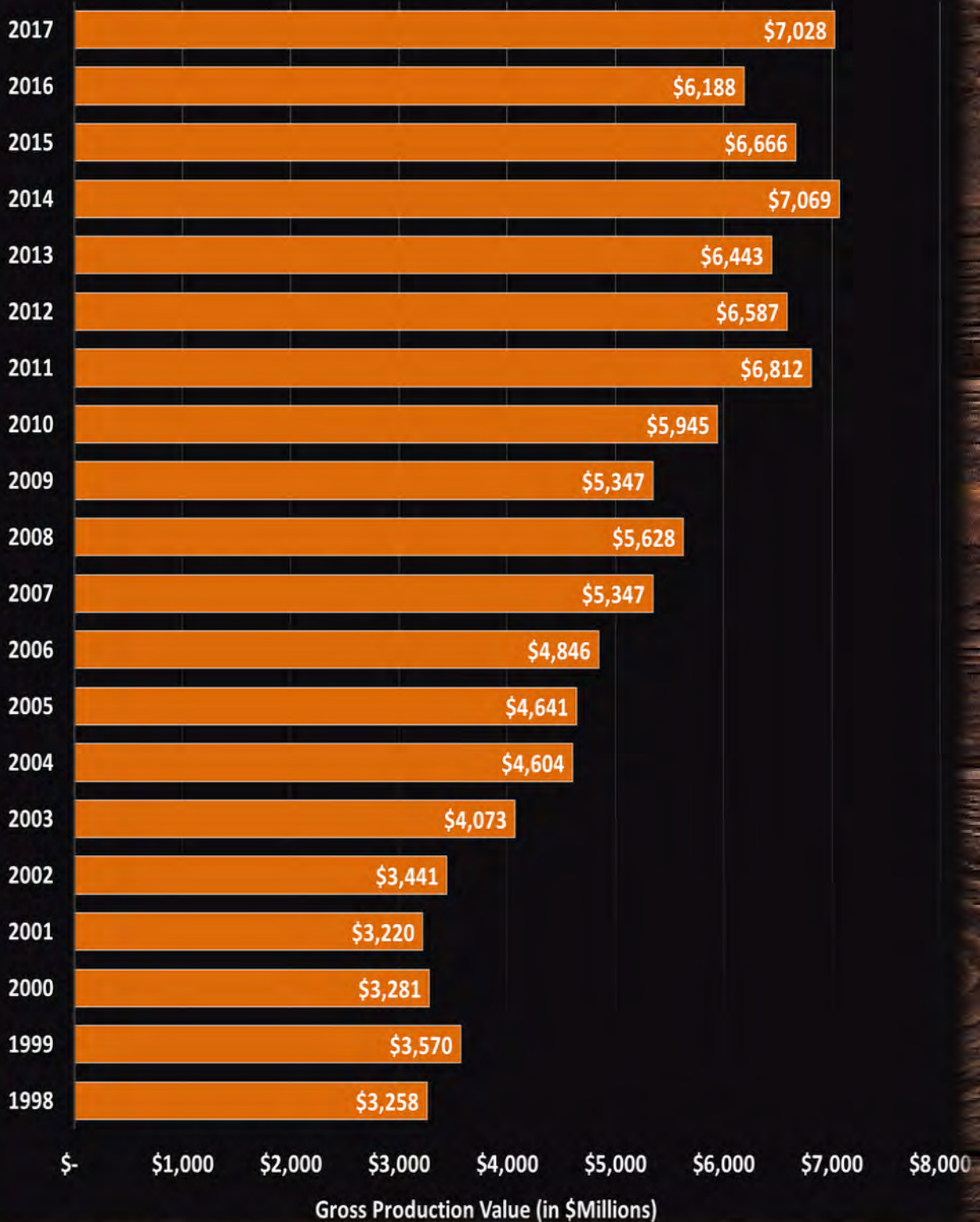
CROPS	1997	2007	2014	2015	2016	2017
Field	\$ 626,737,000	\$ 477,240,000	\$ 321,504,000	\$ 235,683,000 *	\$ 230,614,000	\$ 323,047,000
Seed	\$ 24,075,000	\$ 25,009,000	\$ 33,883,000	\$ 23,446,000	\$ 21,491,000	\$ 27,765,000
Vegetable	\$ 681,390,000	\$ 1,293,100,000	\$ 1,192,387,000	\$ 1,251,412,000	\$ 1,105,362,000	\$ 990,326,000
Fruit & Nut	\$ 1,362,559,800	\$ 2,112,735,000	\$ 3,478,342,000 *	\$ 3,403,549,000 *	\$ 3,247,839,000	\$ 4,033,301,000
Nursery	\$ 36,837,200	\$ 39,576,000	\$ 62,725,000	\$ 46,637,000	\$ 116,186,000	\$ 38,247,000
Livestock (et al.)	\$ 685,664,000 *	\$ 1,359,101,000	\$ 1,900,774,000	\$ 1,631,094,000	\$ 1,371,314,000 *	\$ 1,513,845,000
Apiary	\$ 8,486,000	\$ 37,234,000	\$ 72,480,000	\$ 70,745,000	\$ 90,377,900	\$ 95,584,000
Industrial	\$ 10,694,500	\$ 3,403,000	\$ 7,341,000	\$ 3,349,000	\$ 4,735,200	\$ 5,909,100
<b>TOTAL</b>	<b>\$ 3,436,443,500 *</b>	<b>\$ 5,347,398,000</b>	<b>\$ 7,069,436,000</b>	<b>\$ 6,665,915,000</b>	<b>\$ 6,187,919,100 *</b>	<b>\$ 7,028,024,100</b>

\*Revised





## GROWTH OF FRESNO COUNTY AGRICULTURE OVER 20 YEARS 1998 through 2017





**RELATIONSHIP IN TERMS OF TOTAL VALUE  
FOR 2017 CROP YEAR  
\$7,028,024,100**

