

BEFORE THE BOARD OF SUPERVISORS
OF THE
COUNTY OF FRESNO, STATE OF CALIFORNIA

IN THE MATTER OF FUTURES)
PLANNING OBJECTIVES RELATING)
TO THE FRESNO METROPOLITAN)
FLOOD CONTROL DISTRICT)

Resolution

WHEREAS, Fresno County recognizes the importance of collaborating with the Fresno Metropolitan Flood Control District and other partner agencies to achieve the future infrastructure needs in our region, and

WHEREAS, on April 26, 2002 the County of Fresno, City of Fresno, City of Clovis, Fresno Irrigation District, Greater Fresno Area Chamber of Commerce, Building Industry Association of the San Joaquin Valley and the Fresno County Economic Development Corporation jointly participated in a "Futures" Planning Workshop hosted by the Fresno Metropolitan Flood Control District, and

WHEREAS, the objective of the "Futures" Workshop was to recognize and define the role, value and connectedness of the Flood Control District to the local public interests and agencies for the present and future, and

WHEREAS, Flood Control District was recognized as one of the County's strategic partners, with regional focus which can address multiple needs including infrastructure, quality of life and community aesthetics, water resources and economic development, and

WHEREAS, the Workshop participants identified the need for design storm standards review, timely site acquisitions, expedited site landscaping, increased Flood Control District inclusion in land use planning, increased regional infrastructure planning and broader public information on infrastructure and resources, and

WHEREAS, the Workshop determined that the Flood Control District is, and

1 must remain strongly connected to local interests and agencies, but must remain
2 sufficiently independent to continue its results based focus

3 NOW, THEREFORE, BE IT RESOLVED, that the Fresno County Board of
4 Supervisors hereby finds and determines that the interests of the County of Fresno,
5 and its partners local interests and agencies, can be furthered by the Fresno
6 Metropolitan Flood Control District, in partnership with such interests and agencies,
7 achieving the following objectives when consistent with the County's General Plan

8 1 Assist partner agencies in serving their constituents by

- 9
- 10 • Providing Surface Water Storage Capabilities,
 - 11 • Providing Parks and Recreation Facilities when Supported by the
 - 12 Primary Land Use Agencies,
 - 13 • Providing Groundwater Recharge Capabilities,
 - 14 • Expediting Completion of Planned FMFCD Systems,
 - 15 • Convening Long-term Infrastructure Planning Process,
 - 16 • Staying Connected to Regional Partners,
 - 17 • Being a Catalyst for Economic Development, and

18 2 Insure a productive future for the region by continuing as

- 19
- 20 • A Partner in Regional Long Term Infrastructure Planning,
 - 21 • A Leader in Water Quality Management,
 - 22 • A Key Partner in Water Resources Program Structure,
 - 23 • A Key Partner in Water Conservation Program,
 - 24 • A Partner in Regional Public Education,
 - 25 • A Partner in Vertical Connectedness on Statewide Water/Regulatory
 - 26 Issues,
 - 27 • A Key Partner in Multiple Use of District Basins/Assets, and

28 BE IT FURTHER RESOLVED, that the County of Fresno will assist and support
the Fresno Metropolitan Flood Control District in the pursuit and achievement of these
objectives by participating in the following actions and strategies, and further, as
agreed to by the County and the Flood Control District siting of all basins and other
infrastructure outside of the existing city spheres of influence shall be presented to the
Board of Supervisors for approval, and for other unincorporated lands the County shall
request the process be initiated consistent with the County General Plan

ACTIONS

- Investigate Scope, Function and Potential Structure of a Water Resource Joint Powers Entity,
- Conduct Policy Discussion of Urban Drainage System Design Standards,
- Initiate Long-term Infrastructure Planning Process, Addressing Area, Time and Linkage to Economic Development Strategies,
- Initiate Cooperative Multi-Agency Public Education Programs
- Accelerate Completion of Planned Facilities,
- Secure Inclusion of District in Regional Long Term Land Use and Capital Projects Planning,
- Accelerate the Landscaping of Recharge Basins (Urban Lakes),

STRATEGIES

- District to Serve as a Facilitators of Regional Capital Improvement Planning,
- District to Initiate Policy Level Review of Urban Drainage System Design Standards,
- Accelerate Landscaping of Recharge Basins,
- Expand Public Education Programs to Incorporate Multi-Agency Regional Message Priorities,
- Restore Program Dialogue at the Policy Level,
- Pursue Cooperative Approach to Planning of Regional Infrastructure Systems,
- Expand Planning Dialogue on Desired Multiple Uses of District Basins/Reservoirs,
- Pursue Dialogue of Water Resource Joint Powers Entity,
- Engage Business/Civic Community in Systems Planning and Implementation,
- Continue Regional Focus and Collaboration Regarding Flood Control Drainage and Water Resource Programs,
- Streamline Capital/Infrastructure Programs Interface Among Agencies,
- Initiate Multi-Agency Planning of Infrastructure Financing Strategies

///

///

///

///

///

1 THE FOREGOING resolution was PASSED and ADOPTED by the following vote of
2 the Board of Supervisors of the County of Fresno this 1st day of October 2002, to-wit
3
4
5

6 AYES Supervisors Arambula, Case, Anderson, Waterston

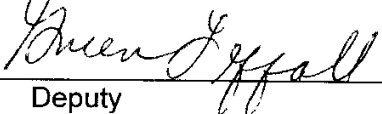
7 NOES None

8 VACANT: District 1

9
10 
11 CHAIRMAN, BOARD OF SUPERVISORS

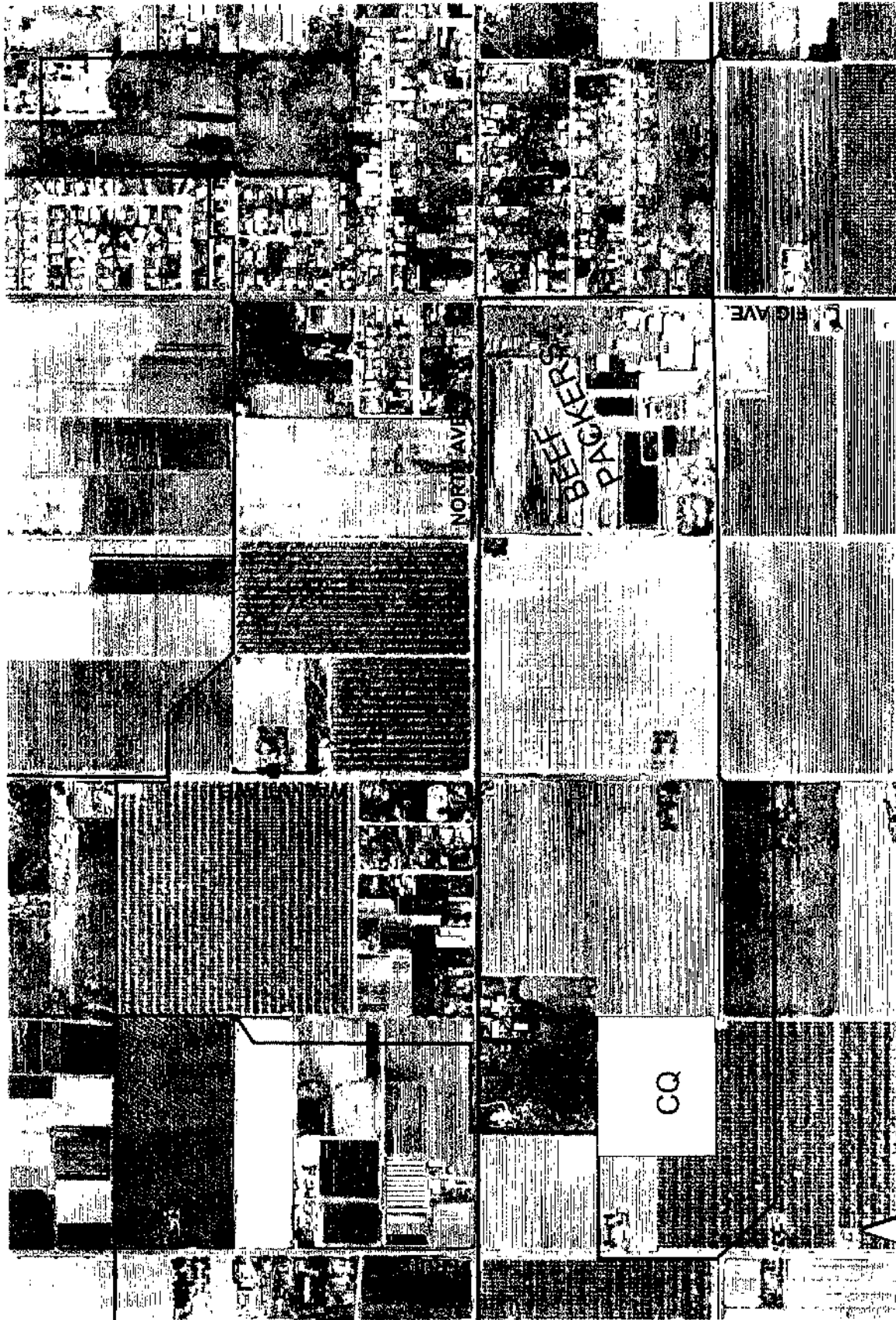
12 ATTEST

13 Bernice E. Seidel, Clerk to Board of Supervisors

14 By 
15 Deputy

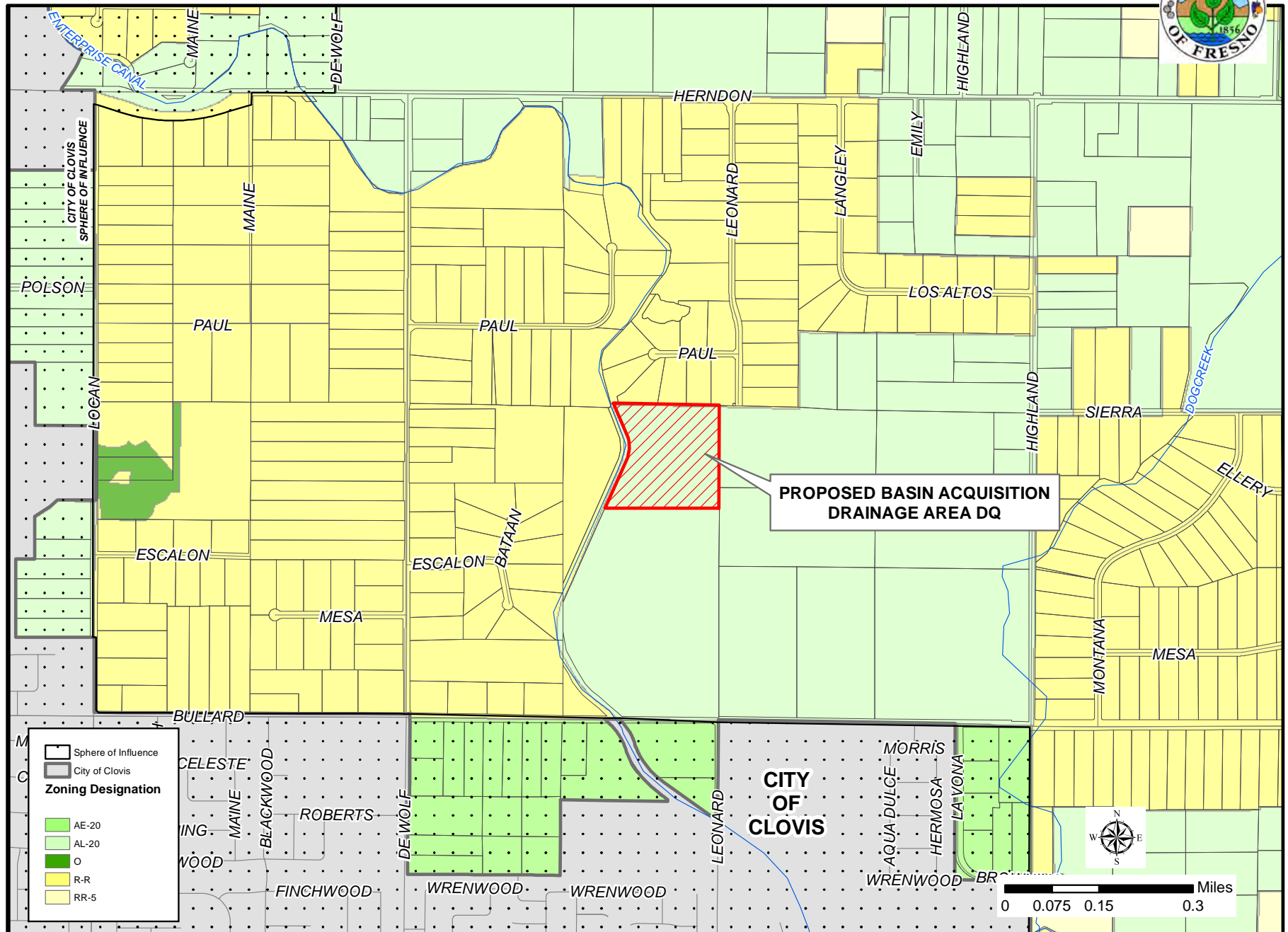
16
17
18
19
20
21
22
23
24
25 File #
26 Agenda #10
27 Resolution #02-509
28

DRAINAGE AREA "CQ"



- Basin
- Drainage Boundary
- City Sphere

BASIN DQ ACQUISITION





Fresno Metropolitan Flood Control District
Capturing Stormwater since 1956

December 14, 2018

Bernard Jimenez
County of Fresno
2281 Tulare Street #300
Fresno, CA 93721

File 170.3061
320.10 "DQ"

RECEIVED
DEC 19 2018

Fresno County
Dept. of Public Works & Planning
Administration

Dear Bernard,

**Request to add an Item to Board of Supervisors Agenda,
Fresno Metropolitan Flood Control District Master Plan Basin "DQ"**

The District is initiating the process of acquiring land to construct a storm water retention basin designated in the Fresno Metropolitan Flood Control District's (District) Master Plan as Basin "DQ", as shown on Exhibit No. 1. Basin "DQ" is located east of the City of Clovis (City), west of the Leonard Avenue alignment, north of Bullard Avenue, and adjacent to the Enterprise Canal. The property designated for the basin is just outside the City's Sphere of Influence (SOI) and has a Williamson Act contract.

The District would like to begin the process to acquire land for Basin "DQ". However, the District recognizes that the Fresno County Board of Supervisors has expressed concerns for basin sites that are located outside the SOI and in Agricultural Preserves. Due to the Board of Supervisors' concerns, the District's Board of Directors has requested staff present its proposal to purchase a basin located outside the boundary of the SOI, based on supporting engineering analysis that justifies that it was not feasible to relocate the basin site inside the SOI.

At its April 12, 2002 meeting, the County Board of Supervisors unanimously passed a Resolution, providing as a general policy, that infrastructure be located within the SOI. The Resolution asked that approval be given for acquisition outside of the SOI, but also provided for exceptions that would allow alternate locations. Most recently, in consideration of the basin purchase, District staff once again analyzed several options to determine the best location for this basin and it was determined that the Master Plan site for Basin "DQ" was the most suitable location.

The Governor's signing of the Sustainable Groundwater Management Act of 2014 (SGMA) has altered the way County, agricultural and development interests must interact to accomplish the common goal of groundwater sustainability. In October 2016, local agencies formed the North Kings Groundwater Sustainability Agency (NKGSA) in accordance with SGMA. It has become a priority of these parties to review projects in light of the need to increase the ability to recharge the aquifer with stormwater and surface water.

Bernard Jimenez
December 13, 2018
Page 2

Basin "DQ" will become an active component of sustainability by capturing and conserving stormwater and other surface waters for groundwater replenishment. The proposed Basin "DQ" site is located east of and adjacent to the Enterprise Canal. While the basin site is outside of the Fresno Irrigation District's (FID) boundary, it could become another element in the path towards sustainability due to its planned location. Basin "DQ" will provide for urban storm water storage, groundwater recharge, if connected to the Enterprise Canal, relief to the Enterprise Canal, and the capture and passage of rural stream flows generated from the upstream portion of an existing unnamed Pup Creek Tributary under the Enterprise Canal. Basin "DQ", along with many other District basins, will become an important component in the NKGSA's plan for groundwater sustainability.

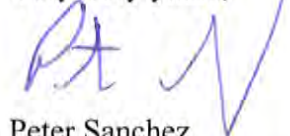
The District understands the County's concern for impacts to property outside the SOI to accommodate urban interests. However, the location of the basin site was studied and justified based on its particular circumstances related to the rural stream flows, the lack of an alternate location inside the SOI and the hydraulic needs of the Master Plan, not including the SGMA component.

To begin this process, staff met with Supervisor Nathan Magsig to discuss the District's intention to begin the acquisition of Basin "DQ". Supervisor Magsig was supportive of the proposed basin location and requested the District continue discussions with FID and the North Kings GSA towards inclusion of this basin in the regional groundwater recharge efforts.

With this letter, the District requests that you place an item on the Agenda to inform the Board of Supervisors of the District's intention to acquire the Master Planned basin site for Basin "DQ" and, preferably, receive their concurrence.

We recognize and appreciate your Board's continuing interest in and support for an effective flood control system and its groundwater recharge element. We appreciate your help in the review of this site and the County's support of our efforts to serve the drainage, flood control and groundwater recharge needs of our mutual constituents. We look forward to working with you in pursuit of this common objective.

Very truly yours,



Peter Sanchez
District Engineer-Assistant General Manager

PS/NL/Irl

Attachment(s)

NOTE: THIS MAP IS SCHEMATIC.
DISTANCES, AMOUNT OF CREDITABLE
FACILITIES, AND LOCATION OF INLET
BOUNDARIES ARE APPROXIMATE.



LEGEND

--- Drainage Area Boundary



Master Plan Basin Site



**DRAINAGE AREA
BOUNDARY**
DRAINAGE AREA "DQ"



EXHIBIT NO. 1 FRESNO METROPOLITAN FLOOD CONTROL DISTRICT

Prepared by: keithr

Date: 10/22/2018

Path: K:\Autocad\DWGS\0EXHIBIT\WP-STUDY\DQ Basin Site.mxd