

BEFORE THE BOARD OF SUPERVISORS
OF THE COUNTY OF FRESNO
STATE OF CALIFORNIA

IN THE MATTER OF: AMENDING)
ESTABLISHED DRAINAGE COSTS AND) RESOLUTION
FEES FOR THE LOCAL DRAINAGE AND)
FLOOD CONTROL MASTER PLAN)

WHEREAS, the Board of Supervisors of the County of Fresno ("County") has enacted Chapter 17.64, Title 17 of the Fresno County Ordinance Code, which Ordinance is hereby incorporated herein by this reference, creating and establishing the authority for imposing and charging fees for the construction of planned local storm drainage facilities pursuant to the adopted Storm Drainage and Flood Control Master Plan; and

WHEREAS, an amended Storm Drainage and Flood Control Master Plan Map (Exhibit A hereto) specifying public facilities and improvements, existing and proposed, which are necessary to provide drainage service and flood control within the respective local drainage areas specified therein has been presented to the Board of Supervisors of the County; and

WHEREAS, a study has been conducted of the impacts of contemplated future development on the existing storm drainage services and facilities in the local drainage areas of the Fresno Metropolitan Flood Control District ("District") and the County listed in Exhibit B attached hereto, along with an analysis of new, improved or expanded public facilities, the estimated costs of those improvements, and the schedule of per gross-acre fees calculated to raise the sum of money necessary to pay the estimated total cost of local drainage facilities in said local drainage areas; and

WHEREAS, this study was available at the District's office for public inspection and review ten (10) days prior to this public hearing and notice was given in compliance with the requirements therefore, and

1 WHEREAS, a public hearing was held pursuant to the public notice cited herein at a
2 regularly scheduled meeting of the Board of Supervisors of the County; and

3 WHEREAS, the Board of Supervisors of the County finds as follows:

4 A. The purpose of this fee is to finance facilities within the County and District required
5 for the removal of surface and storm water; attributable to development; to obviate the menace to
6 the public health, safety and welfare arising from inadequate provision for removal of surface and
7 storm waters occurring as the result of development of property; to prevent deterioration of
8 property values and impairment of conditions making for desirable residential, commercial or
9 industrial development, as the case may be, which would result from the failure to construct
10 planned local drainage facilities relative to development of property; and to prevent deterioration of
11 public streets and other public facilities which would result from failure to construct planned local
12 drainage facilities concurrently with development.

13 B. The fees collected pursuant to Chapter 17.64, Title 17 of the Fresno County Code
14 and this Resolution shall be used to finance only the public facilities described or identified in
15 Exhibit A, attached hereto;

16 C. After considering said Map and said study and analysis prepared by the District,
17 entitled "Storm Drainage and Flood Control Master Plan", and that prepared by the Fresno County
18 Department of Public Works and Planning entitled "Fresno County General Plan", and the various
19 Community and Specific Plans; and the information and testimony received at this public hearing,
20 the Board of Supervisors approves said Map and said study, and incorporates such herein. The
21 Board further finds that all development in the subject area will generate the needs, as described
22 in this recital for storm drainage facilities within the impacted area as described in Exhibit A, and
23 generates an unmet need for storm drainage facilities and services within the impacted area;

24 D. There is a need in this described impact area for storm drainage facilities which
25 have not been constructed or have been constructed, and development will contribute its fair share
26 towards these facility costs through this fee, and said facilities have been called for in, or are
27 consistent with, the County's General Plan;

28

1 E. The facts and evidence presented establish that there is a reasonable relationship
2 between the need for the described public facilities and the impacts of the types of development as
3 described in Exhibit A and Exhibit B for which the corresponding fee set forth in Exhibit B is
4 charged. There is a reasonable relationship between the fee's use and the development of the
5 lands in the service area for which the fee is charged, as these reasonable relationships or
6 nexuses are described in more detail in the study and Map referred to above;

7 F. The Storm Drainage and Flood Control Master Plan Map attached hereto as Exhibit
8 A and the storm drainage fees set forth in Exhibit B, as adopted by Paragraphs 2 and 3 herein
9 below, revise the Storm Drainage and Flood Control Master Plan, are in conformity with the
10 County's General Plan and are in compliance with Section 66483 of the California Government
11 Code.

12 G. The cost estimates set forth in Exhibit B are reasonable cost estimates for
13 constructing these facilities and the fee schedule is predicated on said estimates and is to
14 generate fees by development which will not exceed the total of these costs.

15 NOW, THEREFORE, it is hereby resolved by the Board of Supervisors of the County of
16 Fresno that:

17 1. The above recitals are true and correct, and this Board of Supervisors so finds and
18 determines.

19 2. The Storm Drainage and Flood Control Master Plan is hereby amended to include
20 that Storm Drain and Flood Control Master Plan Map attached hereto as Exhibit A as supported by
21 Exhibit B.

22 3. The schedule of drainage fees for those respective local drainage areas listed in
23 Exhibit B hereto is hereby amended as set forth in said Exhibit B. The District shall prepare and
24 provide to the County a 2019 Schedule of Drainage Fees for each of its local drainage areas,
25 which shall include the amendments adopted hereby. Fees shall be paid in accordance with the
26 Drainage Fee Ordinances according to said 2019 Drainage Fee Schedule.

27 4. The fee shall be solely used to pay: (a) costs related to the design, administration
28 and construction of the described public storm water facilities; (b) for reimbursing the District for

1 the development's fair share of those capital improvements constructed by the District; or (c) to
2 reimburse other developers who have constructed public facilities in each service area where
3 those facilities were beyond that needed to mitigate the impacts of the other developers' project or
4 projects and where reimbursement is provided for under the Drainage Fee Ordinance or the
5 Fresno County Ordinance.

6 5. The District, pursuant to Chapter 17.64 of Title 17 of the Fresno County Ordinance
7 Code, shall review the estimated cost of the described capital improvements for which this fee is
8 charged, the continued or expanded need therefore, and the reasonable relationship between
9 such facility needs and the varying types and development. The Manager shall report the findings
10 to the Board of Supervisors and recommend any adjustment to this fee or other action as may be
11 needed.

12 6. Pursuant to California Government Code 66022, any judicial action or proceeding to
13 attack, review, set aside, void or annul this Resolution shall be brought within 120 days of the
14 effective date hereof, which shall be 60 days after the date of adoption hereof. Administrative
15 appeal is a mandatory prerequisite to any such judicial action or proceeding. Such appeal shall be
16 made in writing to the Director of the Department of Public Works and Planning of the County of
17 Fresno. Such appeal must be made within 60 days after the effective date hereof. The Director
18 shall set the matter for hearing, conduct the hearing and render a decision within 40 days after
19 such appeal is filed.

20 7. The Ordinances of the County of Fresno has an administrative mechanism whereby
21 a property owner who seeks to develop property within the boundaries of the County and the
22 District can challenge the fees imposed thereunder only by first paying said fees under protest.
23 Developers of property within the District shall adhere to the applicable Ordinance of the County of
24 Fresno under which it is required that drainage fees must be paid before development is allowed,
25 and such fee may be paid under protest.

26 ///

27 ///

28

1 THE FOREGOING, was passed and adopted by the following vote of the Board of
2 Supervisors of the County of Fresno this 12th day of March, 2019 to wit:

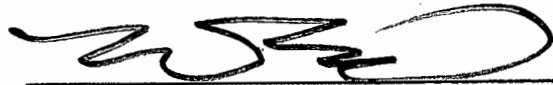
3
4 AYES: Supervisors Magsig, Mendes, Pacheco, Quintero

5 NOES: None

6 ABSENT: None

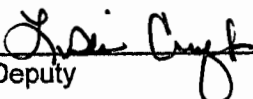
7 ABSTAINED: None

8 VACANT: District 2

9
10
11 

12 Nathan Magsig, Chairperson of the Board of
Supervisors of the County of Fresno

13
14 ATTEST:
15 Bernice E. Seidel
16 Clerk of the Board of Supervisors
County of Fresno, State of California

17
18 By: 
Deputy

2019 Drainage Fee Schedule with Amendments (County Schedule)

County schedule includes both City of Fresno and Clovis schedules

Effective Date: March 1, 2019

Exhibit “B”

Fresno Metropolitan Flood Control District

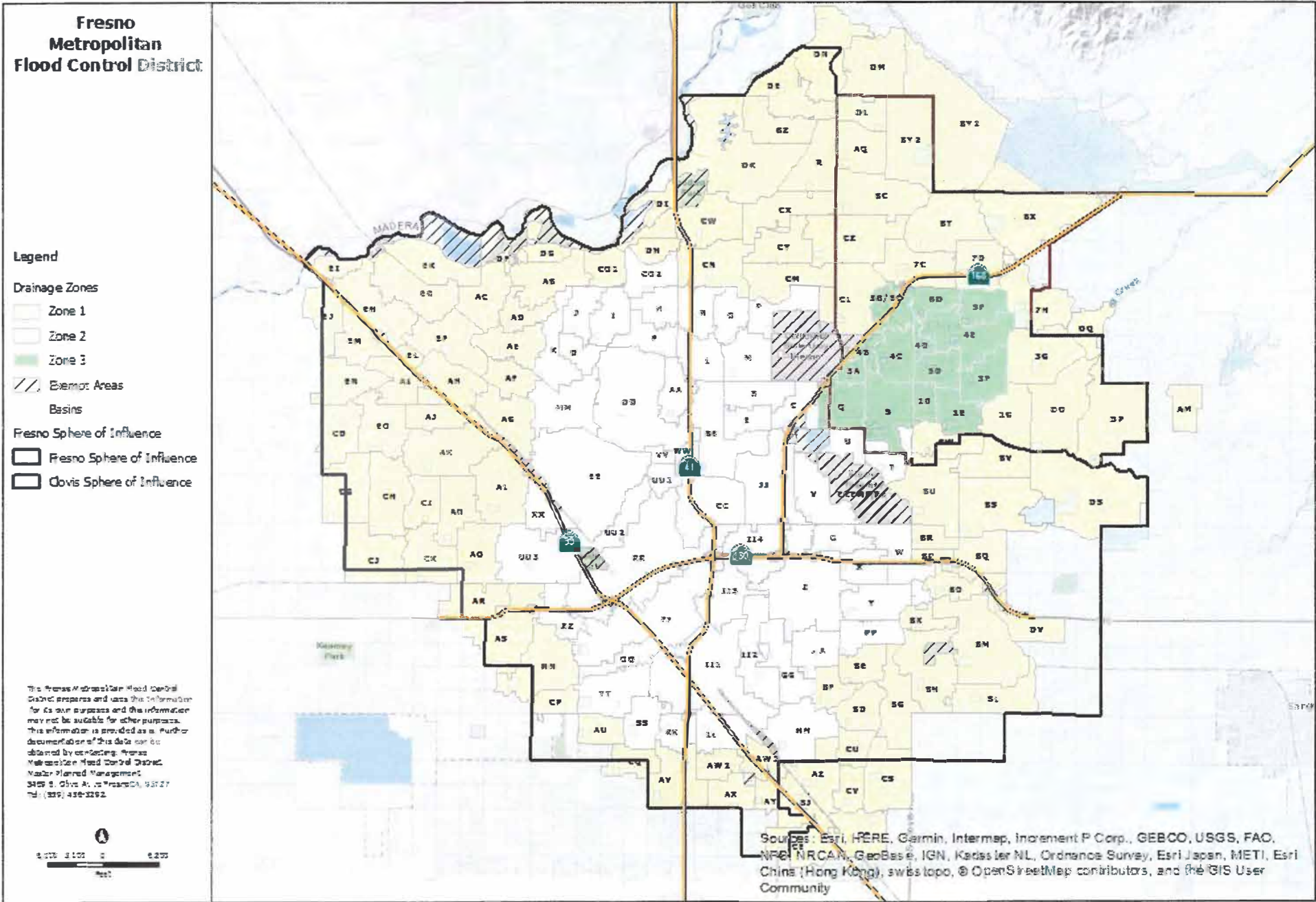


2019 DRAINAGE FEE SCHEDULE

Fresno County

Effective Date: 3/1/2019

Faint, illegible text, possibly a signature or stamp.



DRAINAGE FEE SCHEDULE FOR ZONE 1: PLANNED LOCAL DRAINAGE AREAS

Area		AE-S, A-L, O	A1, A2, RR	R-1-E, R-1-EH, R-A	R-1-A, R-1-AH	R-1-B, R-1-C, RE	R-1 40%	R-1 45%	R-1 50%	R-2, M-H	R-3	R-4, T-P	M-1, M-2, M-3, C-R, M-1-P, S-L	C-P, C-M, R-P	C-1, C-2, C-3, C-4, C-5, C-6, C-L, P	Total Cost
R	BASIN	\$1,410	\$1,610	\$2,020	\$2,420	\$2,820	\$3,020	\$3,180	\$3,330	\$3,330	\$3,730	\$4,530	\$6,600	\$7,060	\$7,570	\$2,891,960
	PIPE	\$1,840	\$2,080	\$2,760	\$2,990	\$3,250	\$3,380	\$3,490	\$3,580	\$3,580	\$3,840	\$4,100	\$4,760	\$5,030	\$5,310	\$2,780,680
	TOTAL	\$3,250	\$3,690	\$4,780	\$5,410	\$6,070	\$6,400	\$6,670	\$6,910	\$6,910	\$7,570	\$8,630	\$11,360	\$12,090	\$12,880	\$5,672,640
AB	BASIN	\$870	\$990	\$1,250	\$1,490	\$1,740	\$1,860	\$1,960	\$2,060	\$2,060	\$2,300	\$2,800	\$4,070	\$4,350	\$4,670	\$1,501,130
	PIPE	\$1,030	\$1,170	\$1,550	\$1,680	\$1,830	\$1,900	\$1,960	\$2,010	\$2,010	\$2,160	\$2,300	\$2,670	\$2,830	\$2,980	\$1,470,000
	TOTAL	\$1,900	\$2,160	\$2,800	\$3,170	\$3,570	\$3,760	\$3,920	\$4,070	\$4,070	\$4,460	\$5,100	\$6,740	\$7,180	\$7,650	\$2,971,130
AC	BASIN	\$640	\$730	\$920	\$1,100	\$1,280	\$1,370	\$1,440	\$1,520	\$1,520	\$1,700	\$2,060	\$3,000	\$3,210	\$3,440	\$1,095,117
	PIPE	\$890	\$1,010	\$1,340	\$1,460	\$1,580	\$1,650	\$1,700	\$1,740	\$1,740	\$1,870	\$1,990	\$2,320	\$2,450	\$2,580	\$1,164,819
	TOTAL	\$1,530	\$1,740	\$2,260	\$2,560	\$2,860	\$3,020	\$3,140	\$3,260	\$3,260	\$3,570	\$4,050	\$5,320	\$5,660	\$6,020	\$2,259,936
AD	BASIN	\$1,270	\$1,440	\$1,810	\$2,160	\$2,530	\$2,710	\$2,850	\$2,990	\$2,990	\$3,340	\$4,060	\$5,910	\$6,330	\$6,790	\$1,030,450
	PIPE	\$480	\$540	\$720	\$780	\$840	\$880	\$910	\$930	\$930	\$1,000	\$1,060	\$1,230	\$1,310	\$1,380	\$330,500
	TOTAL	\$1,750	\$1,980	\$2,530	\$2,940	\$3,370	\$3,590	\$3,760	\$3,920	\$3,920	\$4,340	\$5,120	\$7,140	\$7,640	\$8,170	\$1,360,950
AE	BASIN	\$1,590	\$1,810	\$2,270	\$2,720	\$3,180	\$3,400	\$3,570	\$3,750	\$3,750	\$4,190	\$5,100	\$7,420	\$7,940	\$8,510	\$2,234,730
	PIPE	\$620	\$710	\$940	\$1,020	\$1,110	\$1,150	\$1,190	\$1,220	\$1,220	\$1,310	\$1,390	\$1,620	\$1,710	\$1,810	\$707,470
	TOTAL	\$2,210	\$2,520	\$3,210	\$3,740	\$4,290	\$4,550	\$4,760	\$4,970	\$4,970	\$5,500	\$6,490	\$9,040	\$9,650	\$10,320	\$2,942,200
AF	BASIN	\$720	\$820	\$1,020	\$1,220	\$1,430	\$1,530	\$1,610	\$1,690	\$1,690	\$1,890	\$2,300	\$3,340	\$3,580	\$3,830	\$1,202,410
	PIPE	\$500	\$570	\$760	\$820	\$890	\$930	\$960	\$980	\$980	\$1,050	\$1,120	\$1,300	\$1,380	\$1,460	\$510,250
	TOTAL	\$1,220	\$1,390	\$1,780	\$2,040	\$2,320	\$2,460	\$2,570	\$2,670	\$2,670	\$2,940	\$3,420	\$4,640	\$4,960	\$5,290	\$1,712,660
AG	BASIN	\$480	\$540	\$680	\$820	\$950	\$1,020	\$1,070	\$1,130	\$1,130	\$1,260	\$1,530	\$2,230	\$2,380	\$2,560	\$1,321,630
	PIPE	\$1,370	\$1,550	\$2,060	\$2,230	\$2,430	\$2,520	\$2,600	\$2,670	\$2,670	\$2,860	\$3,060	\$3,550	\$3,760	\$3,960	\$2,312,910
	TOTAL	\$1,850	\$2,090	\$2,740	\$3,050	\$3,380	\$3,540	\$3,670	\$3,800	\$3,800	\$4,120	\$4,590	\$5,780	\$6,140	\$6,520	\$3,634,540
AH	BASIN	\$1,240	\$1,420	\$1,780	\$2,130	\$2,490	\$2,660	\$2,800	\$2,940	\$2,940	\$3,280	\$3,990	\$5,810	\$6,220	\$6,670	\$3,927,550
	PIPE	\$2,080	\$2,360	\$3,130	\$3,400	\$3,690	\$3,840	\$3,960	\$4,070	\$4,070	\$4,360	\$4,650	\$5,400	\$5,710	\$6,030	\$3,793,200
	TOTAL	\$3,320	\$3,780	\$4,910	\$5,530	\$6,180	\$6,500	\$6,760	\$7,010	\$7,010	\$7,640	\$8,640	\$11,210	\$11,930	\$12,700	\$7,720,750
AI	BASIN	\$1,550	\$1,770	\$2,220	\$2,650	\$3,100	\$3,320	\$3,490	\$3,660	\$3,660	\$4,090	\$4,980	\$7,240	\$7,750	\$8,310	\$2,469,880
	PIPE	\$2,970	\$3,350	\$4,450	\$4,840	\$5,250	\$5,460	\$5,640	\$5,780	\$5,780	\$6,200	\$6,620	\$7,680	\$8,130	\$8,570	\$3,150,850
	TOTAL	\$4,520	\$5,120	\$6,670	\$7,490	\$8,350	\$8,780	\$9,130	\$9,440	\$9,440	\$10,290	\$11,600	\$14,920	\$15,880	\$16,880	\$5,620,730
AJ	BASIN	\$1,630	\$1,860	\$2,330	\$2,780	\$3,260	\$3,490	\$3,660	\$3,840	\$3,840	\$4,300	\$5,230	\$7,610	\$8,140	\$8,730	\$1,472,810
	PIPE	\$590	\$670	\$880	\$960	\$1,040	\$1,090	\$1,120	\$1,150	\$1,150	\$1,230	\$1,320	\$1,530	\$1,620	\$1,700	\$433,080
	TOTAL	\$2,220	\$2,530	\$3,210	\$3,740	\$4,300	\$4,580	\$4,780	\$4,990	\$4,990	\$5,530	\$6,550	\$9,140	\$9,760	\$10,430	\$1,905,890
AK	BASIN	\$930	\$1,060	\$1,340	\$1,600	\$1,870	\$2,000	\$2,100	\$2,200	\$2,200	\$2,470	\$3,000	\$4,360	\$4,670	\$5,010	\$2,842,220
	PIPE	\$1,700	\$1,920	\$2,550	\$2,770	\$3,010	\$3,120	\$3,230	\$3,310	\$3,310	\$3,550	\$3,790	\$4,400	\$4,650	\$4,910	\$3,853,570
	TOTAL	\$2,630	\$2,980	\$3,890	\$4,370	\$4,880	\$5,120	\$5,330	\$5,510	\$5,510	\$6,020	\$6,790	\$8,760	\$9,320	\$9,920	\$6,695,790
AL	BASIN	\$990	\$1,120	\$1,410	\$1,690	\$1,970	\$2,110	\$2,220	\$2,330	\$2,330	\$2,600	\$3,170	\$4,610	\$4,930	\$5,290	\$2,407,930
	PIPE	\$1,930	\$2,180	\$2,890	\$3,140	\$3,410	\$3,550	\$3,670	\$3,760	\$3,760	\$4,030	\$4,300	\$5,000	\$5,290	\$5,580	\$3,608,710
	TOTAL	\$2,920	\$3,300	\$4,300	\$4,830	\$5,380	\$5,660	\$5,890	\$6,090	\$6,090	\$6,630	\$7,470	\$9,610	\$10,220	\$10,870	\$6,016,640
AM	BASIN	\$2,370	\$2,370	\$2,970	\$3,550	\$4,150	\$4,450	\$4,670	\$4,900	\$4,900	\$5,480	\$6,670	\$9,700	\$10,390	\$11,130	\$1,260,966
	PIPE	\$5,950	\$5,950	\$7,900	\$8,590	\$9,330	\$9,700	\$10,010	\$10,280	\$10,280	\$11,010	\$11,750	\$13,650	\$14,440	\$15,230	\$2,886,860
	TOTAL	\$8,320	\$8,320	\$10,870	\$12,140	\$13,480	\$14,150	\$14,680	\$15,180	\$15,180	\$16,490	\$18,420	\$23,350	\$24,830	\$26,360	\$4,147,826

DRAINAGE FEE SCHEDULE FOR ZONE 1: PLANNED LOCAL DRAINAGE AREAS

Area		AE-5, A-L, O	A1, A2, RR	R-1-E, R-1-EH, R-A	R-1-A, R-1-AH	R-1-B, R-1-C, RE	R-1 40%	R-1 45%	R-1 50%	R-2, M-H	R-3	R-4, T-P	M-1, M-2, M-3, C-R, M-1-P, S-L	C-P, C-M, R-P	C-1, C-2, C-3, C-4, C-5, C-6, C-L, P	Total Cost
AN	BASIN	\$1,540	\$1,750	\$2,200	\$2,630	\$3,080	\$3,290	\$3,460	\$3,630	\$3,630	\$4,060	\$4,940	\$7,180	\$7,690	\$8,240	\$2,172,480
	PIPE	\$1,740	\$1,970	\$2,610	\$2,840	\$3,090	\$3,210	\$3,310	\$3,400	\$3,400	\$3,640	\$3,890	\$4,510	\$4,780	\$5,040	\$2,076,950
	TOTAL	\$3,280	\$3,720	\$4,810	\$5,470	\$6,170	\$6,500	\$6,770	\$7,030	\$7,030	\$7,700	\$8,830	\$11,690	\$12,470	\$13,280	\$4,249,430
AO	BASIN	\$1,500	\$1,710	\$2,140	\$2,560	\$3,000	\$3,210	\$3,370	\$3,540	\$3,540	\$3,960	\$4,810	\$7,000	\$7,490	\$8,030	\$2,696,550
	PIPE	\$3,330	\$3,760	\$5,000	\$5,430	\$5,900	\$6,130	\$6,330	\$6,490	\$6,490	\$6,960	\$7,430	\$8,630	\$9,130	\$9,630	\$4,489,140
	TOTAL	\$4,830	\$5,470	\$7,140	\$7,990	\$8,900	\$9,340	\$9,700	\$10,030	\$10,030	\$10,920	\$12,240	\$15,630	\$16,620	\$17,660	\$7,185,690
AQ	BASIN	\$1,750	\$1,750	\$2,200	\$2,630	\$3,070	\$3,290	\$3,450	\$3,620	\$3,620	\$4,050	\$4,930	\$7,170	\$7,680	\$8,230	\$2,482,069
	PIPE	\$3,670	\$3,670	\$4,870	\$5,300	\$5,750	\$5,980	\$6,170	\$6,340	\$6,340	\$6,790	\$7,240	\$8,410	\$8,900	\$9,390	\$4,414,462
	TOTAL	\$5,420	\$5,420	\$7,070	\$7,930	\$8,820	\$9,270	\$9,620	\$9,960	\$9,960	\$10,840	\$12,170	\$15,580	\$16,580	\$17,620	\$6,896,531
AR	BASIN	\$1,500	\$1,710	\$2,150	\$2,570	\$3,000	\$3,210	\$3,380	\$3,540	\$3,540	\$3,960	\$4,820	\$7,010	\$7,510	\$8,050	\$3,077,960
	PIPE	\$4,180	\$4,730	\$6,280	\$6,820	\$7,410	\$7,700	\$7,950	\$8,160	\$8,160	\$8,750	\$9,330	\$10,840	\$11,460	\$12,090	\$5,312,950
	TOTAL	\$5,680	\$6,440	\$8,430	\$9,390	\$10,410	\$10,910	\$11,330	\$11,700	\$11,700	\$12,710	\$14,150	\$17,850	\$18,970	\$20,140	\$8,390,910
AS	BASIN	\$1,200	\$1,360	\$1,710	\$2,040	\$2,390	\$2,560	\$2,690	\$2,820	\$2,820	\$3,160	\$3,840	\$5,580	\$5,980	\$6,410	\$3,737,240
	PIPE	\$3,530	\$3,990	\$5,290	\$5,750	\$6,490	\$6,700	\$6,880	\$7,370	\$7,370	\$7,870	\$8,880	\$9,140	\$9,670	\$10,190	\$7,801,710
	TOTAL	\$4,730	\$5,350	\$7,000	\$7,790	\$8,630	\$9,050	\$9,390	\$9,700	\$9,700	\$10,530	\$11,710	\$14,720	\$15,650	\$16,600	\$11,538,950
AU	BASIN	\$3,160	\$3,600	\$4,510	\$5,400	\$6,310	\$6,750	\$7,100	\$7,450	\$7,450	\$8,330	\$10,130	\$14,740	\$15,780	\$16,910	\$2,730,670
	PIPE	\$3,010	\$3,410	\$4,520	\$4,910	\$5,340	\$5,550	\$5,730	\$5,880	\$5,880	\$6,300	\$6,720	\$7,810	\$8,260	\$8,710	\$2,135,640
	TOTAL	\$6,170	\$7,010	\$9,030	\$10,310	\$11,650	\$12,300	\$12,830	\$13,330	\$13,330	\$14,630	\$16,850	\$22,550	\$24,040	\$25,620	\$4,866,310
AV	BASIN	\$1,150	\$1,310	\$1,650	\$1,970	\$2,310	\$2,470	\$2,600	\$2,720	\$2,720	\$3,050	\$3,700	\$5,390	\$5,770	\$6,180	\$3,893,190
	PIPE	\$4,750	\$5,370	\$7,130	\$7,750	\$8,410	\$8,740	\$9,030	\$9,270	\$9,270	\$9,930	\$10,600	\$12,310	\$13,020	\$13,730	\$9,084,310
	TOTAL	\$5,900	\$6,680	\$8,780	\$9,720	\$10,720	\$11,210	\$11,630	\$11,990	\$11,990	\$12,980	\$14,300	\$17,700	\$18,790	\$19,910	\$12,977,500
AW1	BASIN	\$1,110	\$1,270	\$1,590	\$1,900	\$2,220	\$2,380	\$2,500	\$2,620	\$2,620	\$2,930	\$3,570	\$5,190	\$5,560	\$5,960	\$1,635,430
	PIPE	\$5,060	\$5,720	\$7,590	\$8,250	\$8,960	\$9,310	\$9,610	\$9,870	\$9,870	\$10,570	\$11,280	\$13,100	\$13,860	\$14,620	\$4,130,170
	TOTAL	\$6,170	\$6,990	\$9,180	\$10,150	\$11,180	\$11,690	\$12,110	\$12,490	\$12,490	\$13,500	\$14,850	\$18,290	\$19,420	\$20,580	\$5,765,600
AW2	BASIN	\$860	\$970	\$1,220	\$1,460	\$1,710	\$1,830	\$1,920	\$2,020	\$2,020	\$2,260	\$2,750	\$3,990	\$4,280	\$4,580	\$1,324,460
	PIPE	\$990	\$1,120	\$1,490	\$1,620	\$1,760	\$1,820	\$1,880	\$1,930	\$1,930	\$2,070	\$2,210	\$2,570	\$2,720	\$2,870	\$851,760
	TOTAL	\$1,850	\$2,090	\$2,710	\$3,080	\$3,470	\$3,650	\$3,800	\$3,950	\$3,950	\$4,330	\$4,960	\$6,560	\$7,000	\$7,450	\$2,176,220
AX	BASIN	\$1,290	\$1,470	\$1,850	\$2,210	\$2,590	\$2,770	\$2,910	\$3,050	\$3,050	\$3,420	\$4,150	\$6,040	\$6,470	\$6,930	\$2,047,230
	PIPE	\$2,220	\$2,510	\$3,330	\$3,620	\$3,930	\$4,080	\$4,220	\$4,330	\$4,330	\$4,640	\$4,950	\$5,750	\$6,080	\$6,410	\$1,947,650
	TOTAL	\$3,510	\$3,980	\$5,180	\$5,830	\$6,520	\$6,850	\$7,130	\$7,380	\$7,380	\$8,060	\$9,100	\$11,790	\$12,550	\$13,340	\$3,994,880
AY	BASIN	\$1,600	\$1,820	\$2,290	\$2,730	\$3,200	\$3,420	\$3,600	\$3,770	\$3,770	\$4,220	\$5,130	\$7,470	\$7,990	\$8,570	\$2,914,960
	PIPE	\$2,000	\$2,260	\$3,000	\$3,260	\$3,540	\$3,680	\$3,800	\$3,900	\$3,900	\$4,180	\$4,460	\$5,180	\$5,480	\$5,780	\$2,020,550
	TOTAL	\$3,600	\$4,080	\$5,290	\$5,990	\$6,740	\$7,100	\$7,400	\$7,670	\$7,670	\$8,400	\$9,590	\$12,650	\$13,470	\$14,350	\$4,935,510
AZ	BASIN	\$500	\$570	\$710	\$850	\$990	\$1,060	\$1,120	\$1,170	\$1,170	\$1,310	\$1,590	\$2,320	\$2,480	\$2,660	\$1,325,440
	PIPE	\$1,800	\$2,030	\$2,700	\$2,930	\$3,190	\$3,310	\$3,420	\$3,510	\$3,510	\$3,760	\$4,020	\$4,660	\$4,930	\$5,200	\$2,797,470
	TOTAL	\$2,300	\$2,600	\$3,410	\$3,780	\$4,180	\$4,370	\$4,540	\$4,680	\$4,680	\$5,070	\$5,610	\$6,980	\$7,410	\$7,860	\$4,122,910
BC	BASIN	\$1,610	\$1,830	\$2,300	\$2,750	\$3,220	\$3,440	\$3,620	\$3,800	\$3,800	\$4,250	\$5,170	\$7,520	\$8,050	\$8,630	\$4,386,809
	PIPE	\$2,620	\$2,960	\$3,930	\$4,270	\$4,630	\$4,820	\$4,970	\$5,100	\$5,100	\$5,470	\$5,840	\$6,780	\$7,170	\$7,570	\$5,620,988
	TOTAL	\$4,230	\$4,790	\$6,230	\$7,020	\$7,850	\$8,260	\$8,590	\$8,900	\$8,900	\$9,720	\$11,010	\$14,300	\$15,220	\$16,200	\$10,007,797

DRAINAGE FEE SCHEDULE FOR ZONE 1: PLANNED LOCAL DRAINAGE AREAS

Area		AE-5, A-L, O	A1, A2, RR	R-1-E, R-1-EH, R-A	R-1-A, R-1-AH	R-1-B, R-1-C, RE	R-1 40%	R-1 45%	R-1 50%	R-2, M-H	R-3	R-4, T-P	M-1, M-2, M-3, C-R, M-1-P, S-L	C-P, C-M, R-P	C-1, C-2, C-3, C-4, C-5, C-6, C-L, P	Total Cost
BD	BASIN	\$1,240	\$1,410	\$1,770	\$2,120	\$2,480	\$2,650	\$2,790	\$2,920	\$2,920	\$3,270	\$3,970	\$5,780	\$6,190	\$6,630	\$2,053,800
	PIPE	\$2,250	\$2,550	\$3,380	\$3,670	\$3,990	\$4,150	\$4,280	\$4,390	\$4,390	\$4,710	\$5,020	\$5,840	\$6,170	\$6,510	\$2,505,510
	TOTAL	\$3,490	\$3,960	\$5,150	\$5,790	\$6,470	\$6,800	\$7,070	\$7,310	\$7,310	\$7,980	\$8,990	\$11,620	\$12,360	\$13,140	\$4,559,310
BE	BASIN	\$1,300	\$1,490	\$1,870	\$2,230	\$2,610	\$2,790	\$2,940	\$3,080	\$3,080	\$3,440	\$4,190	\$6,090	\$6,520	\$6,990	\$1,195,560
	PIPE	\$1,680	\$1,890	\$2,510	\$2,730	\$2,970	\$3,080	\$3,180	\$3,270	\$3,270	\$3,500	\$3,740	\$4,340	\$4,590	\$4,840	\$1,315,270
	TOTAL	\$2,980	\$3,380	\$4,380	\$4,960	\$5,580	\$5,870	\$6,120	\$6,350	\$6,350	\$6,940	\$7,930	\$10,430	\$11,110	\$11,830	\$2,510,830
BF	BASIN	\$1,780	\$2,030	\$2,550	\$3,050	\$3,560	\$3,810	\$4,010	\$4,200	\$4,200	\$4,700	\$5,720	\$8,320	\$8,910	\$9,550	\$1,535,550
	PIPE	\$1,160	\$1,310	\$1,740	\$1,890	\$2,050	\$2,130	\$2,200	\$2,260	\$2,260	\$2,420	\$2,580	\$3,000	\$3,170	\$3,340	\$811,360
	TOTAL	\$2,940	\$3,340	\$4,290	\$4,940	\$5,610	\$5,940	\$6,210	\$6,460	\$6,460	\$7,120	\$8,300	\$11,320	\$12,080	\$12,890	\$2,346,910
BG	BASIN	\$1,550	\$1,760	\$2,210	\$2,640	\$3,090	\$3,310	\$3,480	\$3,650	\$3,650	\$4,080	\$4,960	\$7,220	\$7,730	\$8,280	\$3,561,230
	PIPE	\$2,590	\$2,920	\$3,880	\$4,220	\$4,580	\$4,760	\$4,920	\$5,050	\$5,050	\$5,410	\$5,770	\$6,700	\$7,090	\$7,480	\$4,025,800
	TOTAL	\$4,140	\$4,680	\$6,090	\$6,860	\$7,670	\$8,070	\$8,400	\$8,700	\$8,700	\$9,490	\$10,730	\$13,920	\$14,820	\$15,760	\$7,587,030
BH	BASIN	\$890	\$1,020	\$1,280	\$1,530	\$1,790	\$1,910	\$2,010	\$2,110	\$2,110	\$2,360	\$2,870	\$4,170	\$4,470	\$4,790	\$1,787,440
	PIPE	\$3,200	\$3,620	\$4,800	\$5,220	\$5,670	\$5,890	\$6,090	\$6,250	\$6,250	\$6,690	\$7,140	\$8,300	\$8,780	\$9,260	\$5,629,640
	TOTAL	\$4,090	\$4,640	\$6,080	\$6,750	\$7,460	\$7,800	\$8,100	\$8,360	\$8,360	\$9,050	\$10,010	\$12,470	\$13,250	\$14,050	\$7,417,080
BJ	BASIN	\$800	\$920	\$1,150	\$1,370	\$1,610	\$1,720	\$1,810	\$1,900	\$1,900	\$2,120	\$2,580	\$3,750	\$4,020	\$4,310	\$999,620
	PIPE	\$2,430	\$2,740	\$3,640	\$3,960	\$4,300	\$4,470	\$4,610	\$4,730	\$4,730	\$5,070	\$5,410	\$6,290	\$6,650	\$7,020	\$1,670,500
	TOTAL	\$3,230	\$3,660	\$4,790	\$5,330	\$5,910	\$6,190	\$6,420	\$6,630	\$6,630	\$7,190	\$7,990	\$10,040	\$10,670	\$11,330	\$2,670,120
BK	BASIN	\$1,950	\$2,220	\$2,780	\$3,330	\$3,890	\$4,160	\$4,380	\$4,590	\$4,590	\$5,140	\$6,250	\$9,090	\$9,730	\$10,430	\$1,983,540
	PIPE	\$2,100	\$2,370	\$3,150	\$3,420	\$3,710	\$3,860	\$4,090	\$4,380	\$4,090	\$4,380	\$4,680	\$5,430	\$5,750	\$6,060	\$1,361,170
	TOTAL	\$4,050	\$4,590	\$5,930	\$6,750	\$7,600	\$8,020	\$8,360	\$8,680	\$8,680	\$9,520	\$10,930	\$14,520	\$15,480	\$16,490	\$3,344,710
BL	BASIN	\$1,400	\$1,600	\$2,010	\$2,400	\$2,810	\$3,000	\$3,160	\$3,310	\$3,310	\$3,700	\$4,500	\$6,550	\$7,020	\$7,520	\$3,940,310
	PIPE	\$3,540	\$4,000	\$5,310	\$5,770	\$6,260	\$6,510	\$6,720	\$6,900	\$6,900	\$7,390	\$7,890	\$9,160	\$9,690	\$10,220	\$6,349,180
	TOTAL	\$4,940	\$5,600	\$7,320	\$8,170	\$9,070	\$9,510	\$9,880	\$10,210	\$10,210	\$11,090	\$12,390	\$15,710	\$16,710	\$17,740	\$10,289,490
BM	BASIN	\$690	\$790	\$990	\$1,180	\$1,380	\$1,480	\$1,550	\$1,630	\$1,630	\$1,820	\$2,210	\$3,220	\$3,450	\$3,700	\$2,815,650
	PIPE	\$3,420	\$3,860	\$5,130	\$5,570	\$6,050	\$6,290	\$6,490	\$6,660	\$6,660	\$7,140	\$7,620	\$8,850	\$9,360	\$9,880	\$10,293,560
	TOTAL	\$4,110	\$4,650	\$6,120	\$6,750	\$7,430	\$7,770	\$8,040	\$8,290	\$8,290	\$8,960	\$9,830	\$12,070	\$12,810	\$13,580	\$13,109,210
BO	BASIN	\$1,090	\$1,250	\$1,560	\$1,870	\$2,190	\$2,340	\$2,460	\$2,580	\$2,580	\$2,890	\$3,510	\$5,110	\$5,470	\$5,870	\$1,016,954
	PIPE	\$2,220	\$2,510	\$3,330	\$3,620	\$3,930	\$4,090	\$4,220	\$4,330	\$4,330	\$4,640	\$4,950	\$5,750	\$6,090	\$6,420	\$1,588,183
	TOTAL	\$3,310	\$3,760	\$4,890	\$5,490	\$6,120	\$6,430	\$6,680	\$6,910	\$6,910	\$7,530	\$8,460	\$10,860	\$11,560	\$12,290	\$2,605,137
BP	BASIN	\$2,970	\$3,380	\$4,240	\$5,070	\$5,930	\$6,350	\$6,670	\$7,000	\$7,000	\$7,830	\$9,520	\$13,850	\$14,830	\$15,900	\$1,947,150
	PIPE	\$2,980	\$3,360	\$4,460	\$4,850	\$5,270	\$5,470	\$5,650	\$5,800	\$5,800	\$6,220	\$6,630	\$7,710	\$8,150	\$8,600	\$1,083,020
	TOTAL	\$5,950	\$6,740	\$8,700	\$9,920	\$11,200	\$11,820	\$12,320	\$12,800	\$12,800	\$14,050	\$16,150	\$21,560	\$22,980	\$24,500	\$3,030,170
BQ	BASIN	\$1,230	\$1,400	\$1,750	\$2,100	\$2,450	\$2,620	\$2,760	\$2,890	\$2,890	\$3,240	\$3,930	\$5,720	\$6,130	\$6,570	\$2,400,450
	PIPE	\$3,010	\$3,400	\$4,520	\$4,520	\$5,330	\$5,490	\$5,720	\$5,870	\$5,870	\$6,300	\$6,720	\$7,800	\$8,250	\$8,700	\$3,769,410
	TOTAL	\$4,240	\$4,800	\$6,270	\$7,010	\$7,780	\$8,160	\$8,480	\$8,760	\$8,760	\$9,540	\$10,650	\$13,520	\$14,380	\$15,270	\$6,169,860
BR	BASIN	\$1,930	\$2,200	\$2,760	\$3,300	\$3,870	\$4,140	\$4,350	\$4,560	\$4,560	\$5,100	\$6,200	\$9,020	\$9,660	\$10,360	\$2,463,970
	PIPE	\$2,640	\$2,980	\$3,960	\$4,300	\$4,670	\$4,860	\$5,020	\$5,150	\$5,150	\$5,520	\$5,890	\$6,840	\$7,230	\$7,630	\$1,866,450
	TOTAL	\$4,570	\$5,180	\$6,720	\$7,600	\$8,540	\$9,000	\$9,370	\$9,710	\$9,710	\$10,620	\$12,090	\$15,860	\$16,890	\$17,990	\$4,330,420

DRAINAGE FEE SCHEDULE FOR ZONE 1: PLANNED LOCAL DRAINAGE AREAS

Area		AE-5, A-L, O	A1, A2, RR	R-1-E, R-1-EH, R-A	R-1-A, R-1-AH	R-1-B, R-1-C, RE	R-1 40%	R-1 45%	R-1 50%	R-2, M-H	R-3	R-4, T-P	M-1, M-2, M-3, C-R, M-1-P, S-L	C-P, C-M, R-P	C-1, C-2, C-3, C-4, C-5, C-6, C-L, P	Total Cost
BS	BASIN	\$1,340	\$1,520	\$1,910	\$2,290	\$2,670	\$2,860	\$3,010	\$3,150	\$3,150	\$3,530	\$4,290	\$6,240	\$6,680	\$7,160	\$4,028,600
	PIPE	\$4,190	\$4,740	\$6,290	\$6,840	\$7,420	\$7,720	\$7,970	\$8,180	\$8,180	\$8,770	\$9,350	\$10,860	\$11,490	\$12,120	\$9,322,520
	TOTAL	\$5,530	\$6,260	\$8,200	\$9,130	\$10,090	\$10,580	\$10,980	\$11,330	\$11,330	\$12,300	\$13,640	\$17,100	\$18,170	\$19,280	\$13,351,120
BT	BASIN	\$2,060	\$2,350	\$2,940	\$3,520	\$4,120	\$4,410	\$4,630	\$4,860	\$4,860	\$5,440	\$6,610	\$9,620	\$10,300	\$11,040	\$4,327,200
	PIPE	\$3,640	\$4,110	\$5,460	\$5,930	\$6,440	\$6,690	\$6,910	\$7,090	\$7,090	\$7,600	\$8,110	\$9,420	\$9,970	\$10,510	\$6,745,800
	TOTAL	\$5,700	\$6,460	\$8,400	\$9,450	\$10,560	\$11,100	\$11,540	\$11,950	\$11,950	\$13,040	\$14,720	\$19,040	\$20,270	\$21,550	\$11,073,000
BU	BASIN	\$450	\$520	\$650	\$770	\$910	\$970	\$1,020	\$1,070	\$1,070	\$1,190	\$1,450	\$2,110	\$2,260	\$2,430	\$2,033,280
	PIPE	\$1,460	\$1,650	\$2,190	\$2,380	\$2,590	\$2,690	\$2,780	\$2,850	\$2,850	\$3,050	\$3,260	\$3,790	\$4,000	\$4,220	\$3,849,510
	TOTAL	\$1,910	\$2,170	\$2,840	\$3,150	\$3,500	\$3,660	\$3,800	\$3,920	\$3,920	\$4,240	\$4,710	\$5,900	\$6,260	\$6,650	\$5,882,790
BV	BASIN	\$750	\$850	\$1,070	\$1,280	\$1,490	\$1,600	\$1,680	\$1,760	\$1,760	\$1,970	\$2,400	\$3,490	\$3,730	\$4,000	\$999,921
	PIPE	\$2,440	\$2,760	\$3,670	\$3,980	\$4,330	\$4,500	\$4,640	\$4,760	\$4,760	\$5,110	\$5,450	\$6,330	\$6,700	\$7,060	\$2,807,417
	TOTAL	\$3,190	\$3,610	\$4,740	\$5,260	\$5,820	\$6,100	\$6,320	\$6,520	\$6,520	\$7,080	\$7,850	\$9,820	\$10,430	\$11,060	\$3,807,338
BW	BASIN	\$970	\$1,110	\$1,390	\$1,660	\$1,940	\$2,080	\$2,190	\$2,300	\$2,300	\$2,570	\$3,120	\$4,540	\$4,860	\$5,210	\$1,211,930
	PIPE	\$1,090	\$1,240	\$1,640	\$1,780	\$1,940	\$2,010	\$2,080	\$2,130	\$2,130	\$2,290	\$2,440	\$2,830	\$3,000	\$3,160	\$1,082,900
	TOTAL	\$2,060	\$2,350	\$3,030	\$3,440	\$3,880	\$4,090	\$4,270	\$4,430	\$4,430	\$4,860	\$5,560	\$7,370	\$7,860	\$8,370	\$2,294,830
BX	BASIN	\$2,130	\$2,130	\$2,670	\$3,200	\$3,740	\$4,000	\$4,210	\$4,410	\$4,410	\$4,930	\$6,000	\$8,730	\$9,350	\$10,020	\$7,690,715
	PIPE	\$2,660	\$2,660	\$3,530	\$3,840	\$4,160	\$4,330	\$4,470	\$4,590	\$4,590	\$4,920	\$5,250	\$6,090	\$6,450	\$6,800	\$8,068,477
	TOTAL	\$4,790	\$4,790	\$6,200	\$7,040	\$7,900	\$8,330	\$8,680	\$9,000	\$9,000	\$9,850	\$11,250	\$14,820	\$15,800	\$16,820	\$15,759,192
*Note: A surcharge fee is in effect in addition to the rates per Board Resolution No. 2008-590 adopted December 17, 2008 & Board Resolution No. 2017-884 adopted December 12, 2017																
BY1	BASIN	\$990	\$1,130	\$1,420	\$1,690	\$1,980	\$2,120	\$2,230	\$2,340	\$2,340	\$2,620	\$3,180	\$4,630	\$4,960	\$5,310	\$2,725,800
	PIPE	\$630	\$710	\$940	\$1,020	\$1,110	\$1,150	\$1,190	\$1,220	\$1,220	\$1,310	\$1,400	\$1,620	\$1,720	\$1,810	\$1,697,060
	TOTAL	\$1,620	\$1,840	\$2,360	\$2,710	\$3,090	\$3,270	\$3,420	\$3,560	\$3,560	\$3,930	\$4,580	\$6,250	\$6,680	\$7,120	\$4,422,860
BY2	BASIN	\$1,640	\$1,870	\$2,340	\$2,800	\$3,280	\$3,510	\$3,690	\$3,870	\$3,870	\$4,330	\$5,260	\$7,660	\$8,200	\$8,790	\$3,880,580
	PIPE	\$4,530	\$5,120	\$6,800	\$7,390	\$8,020	\$8,340	\$8,610	\$8,840	\$8,840	\$9,470	\$10,110	\$11,740	\$12,420	\$13,100	\$8,955,900
	TOTAL	\$6,170	\$6,990	\$9,140	\$10,190	\$11,300	\$11,850	\$12,300	\$12,710	\$12,710	\$13,800	\$15,370	\$19,400	\$20,620	\$21,890	\$12,836,480
BZ	BASIN	\$2,660	\$3,030	\$3,800	\$4,550	\$5,320	\$5,690	\$5,980	\$6,280	\$6,280	\$7,020	\$8,540	\$12,420	\$13,300	\$14,250	\$3,377,720
	PIPE	\$1,900	\$2,140	\$2,840	\$3,090	\$3,350	\$3,490	\$3,600	\$3,700	\$3,700	\$3,960	\$4,230	\$4,910	\$5,190	\$5,480	\$2,044,840
	TOTAL	\$4,560	\$5,170	\$6,640	\$7,640	\$8,670	\$9,180	\$9,580	\$9,980	\$9,980	\$10,980	\$12,770	\$17,330	\$18,490	\$19,730	\$5,422,560
CD	BASIN	\$1,860	\$2,120	\$2,660	\$3,180	\$3,710	\$3,970	\$4,180	\$4,380	\$4,380	\$4,900	\$5,960	\$8,670	\$9,290	\$9,950	\$2,902,450
	PIPE	\$3,460	\$3,910	\$5,180	\$5,630	\$6,120	\$6,360	\$6,570	\$6,740	\$6,740	\$7,220	\$7,710	\$8,950	\$9,470	\$9,990	\$4,166,290
	TOTAL	\$5,320	\$6,030	\$7,840	\$8,810	\$9,830	\$10,330	\$10,750	\$11,120	\$11,120	\$12,120	\$13,670	\$17,620	\$18,760	\$19,940	\$7,068,740
CE	BASIN	\$960	\$1,090	\$1,370	\$1,640	\$1,920	\$2,050	\$2,160	\$2,270	\$2,270	\$2,530	\$3,080	\$4,480	\$4,800	\$5,140	\$2,837,320
	PIPE	\$3,780	\$4,270	\$5,660	\$6,150	\$6,680	\$6,950	\$7,170	\$7,360	\$7,360	\$7,890	\$8,420	\$9,780	\$10,350	\$10,910	\$6,190,690
	TOTAL	\$4,740	\$5,360	\$7,030	\$7,790	\$8,600	\$9,000	\$9,330	\$9,630	\$9,630	\$10,420	\$11,500	\$14,260	\$15,150	\$16,050	\$9,028,010
CF	BASIN	\$770	\$870	\$1,090	\$1,310	\$1,530	\$1,640	\$1,720	\$1,810	\$1,810	\$2,020	\$2,460	\$3,580	\$3,830	\$4,100	\$2,358,200
	PIPE	\$3,940	\$4,450	\$5,910	\$6,420	\$6,970	\$7,250	\$7,480	\$7,680	\$7,680	\$8,230	\$8,780	\$10,200	\$10,790	\$11,380	\$6,725,840
	TOTAL	\$4,710	\$5,320	\$7,000	\$7,730	\$8,500	\$8,890	\$9,200	\$9,490	\$9,490	\$10,250	\$11,240	\$13,780	\$14,620	\$15,480	\$9,084,040
CG	BASIN	\$2,210	\$2,520	\$3,160	\$3,780	\$4,420	\$4,730	\$4,970	\$5,210	\$5,210	\$5,830	\$7,090	\$10,320	\$11,050	\$11,840	\$4,170,650
	PIPE	\$3,730	\$4,210	\$5,590	\$6,080	\$6,600	\$6,860	\$7,090	\$7,270	\$7,270	\$7,790	\$8,320	\$9,660	\$10,220	\$10,780	\$5,883,840
	TOTAL	\$5,940	\$6,730	\$8,750	\$9,860	\$11,020	\$11,590	\$12,060	\$12,480	\$12,480	\$13,620	\$15,410	\$19,980	\$21,270	\$22,620	\$10,054,490

DRAINAGE FEE SCHEDULE FOR ZONE 1: PLANNED LOCAL DRAINAGE AREAS

Area		AE-5, A-L, O	A1, A2, RR	R-1-E, R-1-EH, R-A	R-1-A, R-1-AH	R-1-B, R-1-C, RE	R-1 40%	R-1 45%	R-1 50%	R-2, M-H	R-3	R-4, T-P	M-1, M-2, M-3, C-R, M-1-P, S-L	C-P, C-M, R-P	C-1, C-2, C-3, C-4, C-5, C-6, C-L, P	Total Cost
CH	BASIN	\$1,590	\$1,810	\$2,270	\$2,720	\$3,180	\$3,400	\$3,580	\$3,750	\$3,750	\$4,200	\$5,110	\$7,430	\$7,950	\$8,520	\$3,084,520
	PIPE	\$4,630	\$5,240	\$6,950	\$7,550	\$8,200	\$8,530	\$8,800	\$9,030	\$9,030	\$9,680	\$10,330	\$12,000	\$12,690	\$13,390	\$7,545,020
	TOTAL	\$6,220	\$7,050	\$9,220	\$10,270	\$11,380	\$11,930	\$12,380	\$12,780	\$12,780	\$13,880	\$15,440	\$19,430	\$20,640	\$21,910	\$10,629,540
CI	BASIN	\$1,790	\$2,040	\$2,560	\$3,060	\$3,580	\$3,830	\$4,030	\$4,220	\$4,220	\$4,720	\$5,740	\$8,360	\$8,950	\$9,590	\$1,754,120
	PIPE	\$2,890	\$3,270	\$4,340	\$4,710	\$5,120	\$5,320	\$5,490	\$5,640	\$5,640	\$6,040	\$6,450	\$7,490	\$7,920	\$8,360	\$2,365,330
	TOTAL	\$4,680	\$5,310	\$6,900	\$7,770	\$8,700	\$9,150	\$9,520	\$9,860	\$9,860	\$10,760	\$12,190	\$15,850	\$16,870	\$17,950	\$4,119,450
CJ	BASIN	\$1,970	\$2,250	\$2,820	\$3,370	\$3,940	\$4,220	\$4,430	\$4,650	\$4,650	\$5,200	\$6,320	\$9,200	\$9,850	\$10,560	\$3,749,440
	PIPE	\$3,750	\$4,240	\$5,630	\$6,120	\$6,640	\$6,900	\$7,130	\$7,320	\$7,320	\$7,840	\$8,370	\$9,720	\$10,280	\$10,840	\$6,058,140
	TOTAL	\$5,720	\$6,490	\$8,450	\$9,490	\$10,580	\$11,120	\$11,560	\$11,970	\$11,970	\$13,040	\$14,690	\$18,920	\$20,130	\$21,400	\$9,807,580
CK	BASIN	\$1,840	\$2,090	\$2,630	\$3,140	\$3,670	\$3,930	\$4,130	\$4,330	\$4,330	\$4,850	\$5,890	\$8,570	\$9,180	\$9,840	\$2,852,920
	PIPE	\$3,820	\$4,320	\$5,730	\$6,230	\$6,760	\$7,030	\$7,260	\$7,450	\$7,450	\$7,980	\$8,520	\$9,890	\$10,470	\$11,040	\$5,026,520
	TOTAL	\$5,660	\$6,410	\$8,360	\$9,370	\$10,430	\$10,960	\$11,390	\$11,780	\$11,780	\$12,830	\$14,410	\$18,460	\$19,650	\$20,880	\$7,879,440
CL	BASIN	\$770	\$880	\$1,100	\$1,310	\$1,540	\$1,640	\$1,730	\$1,810	\$1,810	\$2,030	\$2,470	\$3,590	\$3,840	\$4,120	\$2,007,780
	PIPE	\$1,130	\$1,280	\$1,690	\$1,840	\$2,000	\$2,080	\$2,150	\$2,200	\$2,200	\$2,360	\$2,520	\$2,920	\$3,090	\$3,260	\$2,144,570
	TOTAL	\$1,900	\$2,160	\$2,790	\$3,150	\$3,540	\$3,720	\$3,880	\$4,010	\$4,010	\$4,390	\$4,990	\$6,510	\$6,930	\$7,380	\$4,152,350
CM	BASIN	\$330	\$370	\$470	\$560	\$650	\$700	\$730	\$770	\$770	\$860	\$1,050	\$1,520	\$1,630	\$1,750	\$853,400
	PIPE	\$730	\$820	\$1,090	\$1,180	\$1,280	\$1,330	\$1,380	\$1,410	\$1,410	\$1,520	\$1,620	\$1,880	\$1,990	\$2,100	\$1,242,530
	TOTAL	\$1,060	\$1,190	\$1,560	\$1,740	\$1,930	\$2,030	\$2,110	\$2,180	\$2,180	\$2,380	\$2,670	\$3,400	\$3,620	\$3,850	\$2,095,930
*Note: A surcharge fee is in effect in addition to the rates per Board Resolution No. 1228 adopted October 10, 1983.																
CN	BASIN	\$190	\$220	\$280	\$330	\$390	\$410	\$430	\$460	\$460	\$510	\$620	\$900	\$960	\$1,030	\$636,150
	PIPE	\$880	\$990	\$1,320	\$1,430	\$1,550	\$1,620	\$1,670	\$1,710	\$1,710	\$1,840	\$1,960	\$2,270	\$2,410	\$2,540	\$1,808,510
	TOTAL	\$1,070	\$1,210	\$1,600	\$1,760	\$1,940	\$2,030	\$2,100	\$2,170	\$2,170	\$2,350	\$2,580	\$3,170	\$3,370	\$3,570	\$2,444,660
*Note: A surcharge fee is in effect in addition to the rates per Board Resolution No. 1159 adopted September 14, 1981.																
CO1	BASIN	\$530	\$600	\$750	\$900	\$1,050	\$1,130	\$1,180	\$1,240	\$1,240	\$1,390	\$1,690	\$2,460	\$2,630	\$2,820	\$446,571
	PIPE	\$1,640	\$1,850	\$2,460	\$2,670	\$2,900	\$3,020	\$3,120	\$3,200	\$3,200	\$3,430	\$3,660	\$4,250	\$4,490	\$4,740	\$1,191,940
	TOTAL	\$2,170	\$2,450	\$3,210	\$3,570	\$3,950	\$4,150	\$4,300	\$4,440	\$4,440	\$4,820	\$5,350	\$6,710	\$7,120	\$7,560	\$1,638,511
CP	BASIN	\$2,860	\$3,260	\$4,090	\$4,890	\$5,720	\$6,120	\$6,440	\$6,750	\$6,750	\$7,550	\$9,180	\$13,360	\$14,310	\$15,340	\$2,220,950
	PIPE	\$4,340	\$4,900	\$6,510	\$7,070	\$7,680	\$7,980	\$8,240	\$8,460	\$8,460	\$9,070	\$9,670	\$11,240	\$11,890	\$12,540	\$2,675,490
	TOTAL	\$7,200	\$8,160	\$10,600	\$11,960	\$13,400	\$14,100	\$14,680	\$15,210	\$15,210	\$16,620	\$18,850	\$24,600	\$26,200	\$27,880	\$4,896,440
CQ	BASIN	\$2,440	\$2,780	\$3,490	\$4,170	\$4,880	\$5,220	\$5,490	\$5,760	\$5,760	\$6,440	\$7,830	\$11,400	\$12,200	\$13,080	\$2,593,170
	PIPE	\$3,470	\$3,930	\$5,210	\$5,660	\$6,150	\$6,390	\$6,600	\$6,770	\$6,770	\$7,260	\$7,750	\$9,000	\$9,520	\$10,040	\$2,767,540
	TOTAL	\$5,910	\$6,710	\$8,700	\$9,830	\$11,030	\$11,610	\$12,090	\$12,530	\$12,530	\$13,700	\$15,580	\$20,400	\$21,720	\$23,120	\$5,360,710
CS	BASIN	\$570	\$640	\$810	\$970	\$1,130	\$1,210	\$1,270	\$1,330	\$1,330	\$1,490	\$1,810	\$2,640	\$2,830	\$3,030	\$2,211,050
	PIPE	\$2,920	\$3,300	\$4,380	\$4,760	\$5,170	\$5,370	\$5,550	\$5,690	\$5,690	\$6,100	\$6,510	\$7,560	\$8,000	\$8,430	\$6,334,060
	TOTAL	\$3,490	\$3,940	\$5,190	\$5,730	\$6,300	\$6,580	\$6,820	\$7,020	\$7,020	\$7,590	\$8,320	\$10,200	\$10,830	\$11,460	\$8,545,110
CU	BASIN	\$1,430	\$1,630	\$2,040	\$2,440	\$2,860	\$3,060	\$3,210	\$3,370	\$3,370	\$3,770	\$4,580	\$6,670	\$7,140	\$7,650	\$2,102,470
	PIPE	\$2,480	\$2,800	\$3,710	\$4,040	\$4,380	\$4,550	\$4,700	\$4,830	\$4,830	\$5,170	\$5,520	\$6,410	\$6,780	\$7,150	\$2,021,380
	TOTAL	\$3,910	\$4,430	\$5,750	\$6,480	\$7,240	\$7,610	\$7,910	\$8,200	\$8,200	\$8,940	\$10,100	\$13,080	\$13,920	\$14,800	\$4,123,850
CV	BASIN	\$1,170	\$1,330	\$1,670	\$2,000	\$2,340	\$2,500	\$2,630	\$2,760	\$2,760	\$3,090	\$3,760	\$5,460	\$5,850	\$6,270	\$1,823,790
	PIPE	\$920	\$1,040	\$1,380	\$1,500	\$1,630	\$1,700	\$1,750	\$1,800	\$1,800	\$1,930	\$2,060	\$2,390	\$2,530	\$2,670	\$797,770
	TOTAL	\$2,090	\$2,370	\$3,050	\$3,500	\$3,970	\$4,200	\$4,380	\$4,560	\$4,560	\$5,020	\$5,820	\$7,850	\$8,380	\$8,940	\$2,621,560

DRAINAGE FEE SCHEDULE FOR ZONE 1: PLANNED LOCAL DRAINAGE AREAS

Area		AE-5, A-L, O	A1, A2, RR	R-1-E, R-1-EH, R-A	R-1-A, R-1-AH	R-1-B, R-1-C, RE	R-1 40%	R-1 45%	R-1 50%	R-2, M-H	R-3	R-4, T-P	M-1, M-2, M-3, C-R, M-1-P, S-L	C-P, C-M, R-P	C-1, C-2, C-3, C-4, C-5, C-6, C-L, P	Total Cost
CW	BASIN	\$580	\$660	\$830	\$990	\$1,160	\$1,240	\$1,300	\$1,360	\$1,360	\$1,530	\$1,860	\$2,700	\$2,890	\$3,100	\$1,424,230
	PIPE	\$600	\$670	\$890	\$970	\$1,060	\$1,100	\$1,130	\$1,160	\$1,160	\$1,250	\$1,330	\$1,540	\$1,630	\$1,720	\$1,004,420
	TOTAL	\$1,180	\$1,330	\$1,720	\$1,960	\$2,220	\$2,340	\$2,430	\$2,520	\$2,520	\$2,780	\$3,190	\$4,240	\$4,520	\$4,820	\$2,428,650
CX	BASIN	\$750	\$850	\$1,070	\$1,280	\$1,500	\$1,600	\$1,690	\$1,770	\$1,770	\$1,980	\$2,400	\$3,500	\$3,750	\$4,020	\$1,327,077
	PIPE	\$1,190	\$1,350	\$1,790	\$1,940	\$2,110	\$2,190	\$2,260	\$2,320	\$2,320	\$2,490	\$2,660	\$3,090	\$3,270	\$3,440	\$1,744,171
	TOTAL	\$1,940	\$2,200	\$2,860	\$3,220	\$3,610	\$3,790	\$3,950	\$4,090	\$4,090	\$4,470	\$5,060	\$6,590	\$7,020	\$7,460	\$3,071,248
CY	BASIN	\$670	\$770	\$960	\$1,150	\$1,350	\$1,440	\$1,510	\$1,590	\$1,590	\$1,780	\$2,160	\$3,140	\$3,370	\$3,610	\$1,033,430
	PIPE	\$1,000	\$1,130	\$1,500	\$1,630	\$1,770	\$1,840	\$1,900	\$1,950	\$1,950	\$2,090	\$2,230	\$2,590	\$2,740	\$2,890	\$1,212,950
	TOTAL	\$1,670	\$1,900	\$2,460	\$2,780	\$3,120	\$3,280	\$3,410	\$3,540	\$3,540	\$3,870	\$4,390	\$5,730	\$6,110	\$6,500	\$2,246,380
CZ	BASIN	\$520	\$590	\$740	\$880	\$1,030	\$1,110	\$1,160	\$1,220	\$1,220	\$1,370	\$1,660	\$2,420	\$2,590	\$2,770	\$1,440,920
	PIPE	\$1,150	\$1,300	\$1,720	\$1,870	\$2,030	\$2,110	\$2,180	\$2,240	\$2,240	\$2,400	\$2,560	\$2,970	\$3,140	\$3,310	\$2,555,610
	TOTAL	\$1,670	\$1,890	\$2,460	\$2,750	\$3,060	\$3,220	\$3,340	\$3,460	\$3,460	\$3,770	\$4,220	\$5,390	\$5,730	\$6,080	\$3,996,530
DE	BASIN	\$1,310	\$1,500	\$1,880	\$2,250	\$2,630	\$2,810	-	-	\$3,100	\$3,470	\$4,220	\$6,140	\$6,570	\$7,040	\$2,464,230
	PIPE	\$2,220	\$2,510	\$3,330	\$3,620	\$4,930	\$4,090	-	-	\$4,330	\$4,640	\$4,950	\$5,750	\$6,080	\$6,420	\$3,333,241
	TOTAL	\$3,530	\$4,010	\$5,210	\$5,870	\$6,560	\$6,900	-	-	\$7,430	\$8,110	\$9,170	\$11,890	\$12,650	\$13,460	\$5,797,471
*Note: A surcharge fee is in effect in addition to the rates per Board Resolution No. 2006-486 adopted January 25, 2006.																
DF	BASIN	\$570	\$650	\$820	\$970	\$1,140	\$1,220	\$1,280	\$1,350	\$1,350	\$1,510	\$1,830	\$2,660	\$2,850	\$3,060	\$165,172
	PIPE	\$1,070	\$1,210	\$1,610	\$1,750	\$1,900	\$1,970	\$2,040	\$2,090	\$2,090	\$2,240	\$2,390	\$2,780	\$2,940	\$3,100	\$283,883
	TOTAL	\$1,640	\$1,860	\$2,430	\$2,720	\$3,040	\$3,190	\$3,320	\$3,440	\$3,440	\$3,750	\$4,220	\$5,440	\$5,790	\$6,160	\$449,055
DG	BASIN	\$720	\$830	\$1,040	\$1,240	\$1,450	\$1,550	\$1,630	\$1,710	\$1,710	\$1,910	\$2,320	\$3,380	\$3,620	\$3,880	\$447,419
	PIPE	\$1,260	\$1,430	\$1,900	\$2,060	\$2,240	\$2,320	\$2,400	\$2,460	\$2,460	\$2,640	\$2,820	\$3,270	\$3,460	\$3,650	\$720,114
	TOTAL	\$1,980	\$2,260	\$2,940	\$3,300	\$3,690	\$3,870	\$4,030	\$4,170	\$4,170	\$4,550	\$5,140	\$6,650	\$7,080	\$7,530	\$1,167,533
DH	BASIN	\$860	\$980	\$1,230	\$1,470	\$1,720	\$1,840	\$1,930	\$2,030	\$2,030	\$2,270	\$2,760	\$4,010	\$4,290	\$4,600	\$1,590,510
	PIPE	\$960	\$1,080	\$1,440	\$1,560	\$1,690	\$1,760	\$1,820	\$1,870	\$1,870	\$2,000	\$2,130	\$2,480	\$2,620	\$2,770	\$1,109,580
	TOTAL	\$1,820	\$2,060	\$2,670	\$3,030	\$3,410	\$3,600	\$3,750	\$3,900	\$3,900	\$4,270	\$4,890	\$6,490	\$6,910	\$7,370	\$2,700,090
DI	BASIN	\$460	\$520	\$650	\$780	\$920	\$980	\$1,030	\$1,080	\$1,080	\$1,210	\$1,470	\$2,140	\$2,290	\$2,450	\$219,705
	PIPE	\$750	\$850	\$1,120	\$1,220	\$1,330	\$1,380	\$1,420	\$1,460	\$1,460	\$1,570	\$1,670	\$1,940	\$2,050	\$2,170	\$326,191
	TOTAL	\$1,210	\$1,370	\$1,770	\$2,000	\$2,250	\$2,360	\$2,450	\$2,540	\$2,540	\$2,780	\$3,140	\$4,080	\$4,340	\$4,620	\$545,896
DK	BASIN	\$200	\$230	\$280	\$340	\$400	\$420	\$450	\$470	\$470	\$520	\$640	\$930	\$990	\$1,060	\$918,510
	PIPE	\$1,440	\$1,630	\$2,160	\$2,350	\$2,550	\$2,650	\$2,730	\$2,810	\$2,810	\$3,010	\$3,210	\$3,730	\$3,940	\$4,160	\$5,592,390
	TOTAL	\$1,640	\$1,860	\$2,440	\$2,690	\$2,950	\$3,070	\$3,180	\$3,280	\$3,280	\$3,530	\$3,850	\$4,660	\$4,930	\$5,220	\$6,510,900
DL	BASIN	\$2,220	\$2,530	\$3,170	\$3,800	\$4,440	\$4,750	\$5,000	\$5,240	\$5,240	\$5,860	\$7,130	\$10,370	\$11,100	\$11,900	\$2,600,180
	PIPE	\$3,010	\$3,410	\$4,520	\$4,910	\$5,330	\$5,550	\$5,730	\$5,880	\$5,880	\$6,300	\$6,720	\$7,810	\$8,260	\$8,710	\$2,482,590
	TOTAL	\$5,230	\$5,940	\$7,690	\$8,710	\$9,770	\$10,300	\$10,730	\$11,120	\$11,120	\$12,160	\$13,850	\$18,180	\$19,360	\$20,610	\$5,082,770
DM	BASIN	\$1,680	\$1,920	\$2,400	\$2,870	\$3,360	\$3,590	\$3,780	\$3,960	\$3,960	\$4,430	\$5,390	\$7,840	\$8,400	\$9,000	\$3,946,340
	PIPE	\$4,260	\$4,810	\$6,390	\$6,950	\$7,540	\$7,840	\$8,100	\$8,310	\$8,310	\$8,910	\$9,500	\$11,040	\$11,670	\$12,310	\$8,478,450
	TOTAL	\$5,940	\$6,730	\$8,790	\$9,820	\$10,900	\$11,430	\$11,880	\$12,270	\$12,270	\$13,340	\$14,890	\$18,880	\$20,070	\$21,310	\$12,424,790
DN	BASIN	\$2,250	\$2,560	\$3,210	\$3,840	\$4,490	\$4,810	\$5,060	\$5,300	\$5,300	\$5,930	\$7,210	\$10,490	\$11,230	\$12,040	\$4,950,190
	PIPE	\$3,620	\$4,090	\$5,430	\$5,900	\$6,400	\$6,660	\$6,870	\$7,060	\$7,060	\$7,560	\$8,070	\$9,910	\$9,910	\$10,460	\$6,772,860
	TOTAL	\$5,870	\$6,650	\$8,640	\$9,740	\$10,890	\$11,470	\$11,930	\$12,360	\$12,360	\$13,490	\$15,280	\$19,860	\$21,140	\$22,500	\$11,723,050
*Note: A surcharge fee is in effect in addition to the rates per Board Resolution No. 2017-884 adopted December 12, 2017 & Board Resolution No. 2018-000 adopted December 12, 2018.																

DRAINAGE FEE SCHEDULE FOR ZONE 1: PLANNED LOCAL DRAINAGE AREAS

Area		AE-5, A-L, O	A1, A2, RR	R-1-E, R-1-EH, R-A	R-1-A, R-1-AH	R-1-B, R-1-C, RE	R-1 40%	R-1 45%	R-1 50%	R-2, M-H	R-3	R-4, T-P	M-1, M-2, M-3, C-R, M-1-P, S-L	C-P, C-M, R-P	C-1, C-2, C-3, C-4, C-5, C-6, C-L, P	Total Cost
DO	BASIN	\$1,680	\$1,920	\$2,410	\$2,880	\$3,370	\$3,600	\$3,790	\$3,980	\$3,980	\$4,450	\$5,410	\$7,870	\$8,420	\$9,030	\$5,141,700
	PIPE	\$2,530	\$2,860	\$3,800	\$4,120	\$4,480	\$4,660	\$4,810	\$4,930	\$4,930	\$5,290	\$5,640	\$6,550	\$6,930	\$7,310	\$5,992,700
	TOTAL	\$4,210	\$4,780	\$6,210	\$7,000	\$7,850	\$8,260	\$8,600	\$8,910	\$8,910	\$9,740	\$11,050	\$14,420	\$15,350	\$16,340	\$11,134,400
*Note: A surcharge fee is in effect in addition to the rates per Board Resolution No. 2018-887 adopted February 14, 2018 & Board Resolution No. 2018-000 adopted December 12, 2018.																
DP	BASIN	\$1,480	\$1,690	\$2,120	\$2,540	\$2,970	\$3,180	\$3,340	\$3,500	\$3,500	\$3,920	\$4,760	\$6,930	\$7,420	\$7,960	\$5,577,100
	PIPE	\$4,500	\$5,080	\$6,750	\$7,330	\$7,960	\$8,280	\$8,550	\$8,770	\$8,770	\$9,400	\$10,030	\$11,650	\$12,330	\$13,000	\$12,610,270
	TOTAL	\$5,980	\$6,770	\$8,870	\$9,870	\$10,930	\$11,460	\$11,890	\$12,270	\$12,270	\$13,320	\$14,790	\$18,580	\$19,750	\$20,960	\$18,187,370
DQ	BASIN	\$5,310	\$6,050	\$7,590	\$9,070	\$10,610	\$11,360	\$11,940	\$12,520	\$12,520	\$14,010	\$17,030	\$24,780	\$26,530	\$28,440	\$4,386,050
	PIPE	\$3,890	\$4,400	\$5,840	\$6,340	\$7,160	\$6,890	\$7,390	\$7,590	\$7,590	\$8,130	\$8,670	\$10,080	\$10,660	\$11,240	\$2,776,580
	TOTAL	\$9,200	\$10,450	\$13,430	\$15,410	\$17,500	\$18,520	\$19,330	\$20,110	\$20,110	\$22,140	\$25,700	\$34,860	\$37,190	\$39,680	\$7,162,630
DS	BASIN	\$1,940	\$2,210	\$2,770	\$3,310	\$3,870	\$4,140	\$4,350	\$4,570	\$4,570	\$5,110	\$6,210	\$9,040	\$9,680	\$10,370	\$8,454,150
	PIPE	\$3,910	\$4,420	\$5,870	\$6,380	\$6,930	\$7,200	\$7,440	\$7,630	\$7,630	\$8,180	\$8,730	\$10,140	\$10,730	\$11,310	\$13,825,680
	TOTAL	\$5,850	\$6,630	\$8,640	\$9,690	\$10,800	\$11,340	\$11,790	\$12,200	\$12,200	\$13,290	\$14,940	\$19,180	\$20,410	\$21,680	\$22,279,830
DV	BASIN	\$600	\$680	\$860	\$1,020	\$1,200	\$1,280	\$1,350	\$1,410	\$1,410	\$1,580	\$1,920	\$2,800	\$3,000	\$3,210	\$1,243,160
	PIPE	\$4,510	\$5,100	\$6,770	\$7,360	\$7,990	\$8,310	\$8,580	\$8,800	\$8,800	\$9,440	\$10,070	\$11,690	\$12,370	\$13,050	\$5,461,480
	TOTAL	\$5,110	\$5,780	\$7,630	\$8,380	\$9,190	\$9,590	\$9,930	\$10,210	\$10,210	\$11,020	\$11,990	\$14,490	\$15,370	\$16,260	\$6,704,640
EF	BASIN	\$1,340	\$1,530	\$1,920	\$2,300	\$2,690	\$2,870	\$3,020	\$3,170	\$3,170	\$3,550	\$4,310	\$6,270	\$6,720	\$7,200	\$2,706,110
	PIPE	\$750	\$850	\$1,130	\$1,230	\$1,330	\$1,390	\$1,430	\$1,470	\$1,470	\$1,580	\$1,680	\$1,950	\$2,070	\$2,180	\$1,195,850
	TOTAL	\$2,090	\$2,380	\$3,050	\$3,530	\$4,020	\$4,260	\$4,450	\$4,640	\$4,640	\$5,130	\$5,990	\$8,220	\$8,790	\$9,380	\$3,901,960
EG	BASIN	\$550	\$630	\$790	\$940	\$1,100	\$1,180	\$1,240	\$1,300	\$1,300	\$1,450	\$1,760	\$2,570	\$2,750	\$2,940	\$1,332,951
	PIPE	\$2,140	\$2,410	\$3,200	\$3,480	\$3,480	\$3,930	\$4,060	\$4,160	\$4,160	\$4,460	\$4,760	\$5,530	\$5,850	\$6,170	\$3,817,089
	TOTAL	\$2,690	\$3,040	\$3,990	\$4,420	\$4,580	\$5,110	\$5,300	\$5,460	\$5,460	\$5,910	\$6,520	\$8,100	\$8,600	\$9,110	\$5,150,040
EH	BASIN	\$1,060	\$1,210	\$1,520	\$1,810	\$2,120	\$2,270	\$2,380	\$2,500	\$2,500	\$2,800	\$3,400	\$4,950	\$5,300	\$5,680	\$3,283,480
	PIPE	\$2,740	\$3,100	\$4,110	\$4,470	\$4,850	\$5,040	\$5,210	\$5,350	\$5,350	\$5,730	\$6,110	\$7,100	\$7,510	\$7,920	\$5,378,100
	TOTAL	\$3,800	\$4,310	\$5,630	\$6,280	\$6,970	\$7,310	\$7,590	\$7,850	\$7,850	\$8,530	\$9,510	\$12,050	\$12,810	\$13,600	\$8,661,580
EI	BASIN	\$2,680	\$3,050	\$3,830	\$4,580	\$5,360	\$5,730	\$6,030	\$6,320	\$6,320	\$7,070	\$8,600	\$12,510	\$13,390	\$14,350	\$2,230,420
	PIPE	\$1,830	\$2,070	\$2,750	\$2,990	\$3,240	\$3,370	\$3,480	\$3,570	\$3,570	\$3,830	\$4,090	\$4,740	\$5,020	\$5,290	\$907,300
	TOTAL	\$4,510	\$5,120	\$6,580	\$7,570	\$8,600	\$9,100	\$9,510	\$9,890	\$9,890	\$10,900	\$12,690	\$17,250	\$18,410	\$19,640	\$3,137,720
EJ	BASIN	\$3,160	\$3,610	\$4,530	\$5,410	\$6,330	\$6,770	\$7,120	\$7,470	\$7,470	\$8,350	\$10,160	\$14,780	\$15,820	\$16,960	\$3,223,510
	PIPE	\$3,340	\$3,780	\$5,020	\$5,450	\$5,920	\$6,150	\$6,350	\$6,520	\$6,520	\$6,990	\$7,460	\$8,660	\$9,160	\$9,660	\$2,941,170
	TOTAL	\$6,500	\$7,390	\$9,550	\$10,860	\$12,250	\$12,920	\$13,470	\$13,990	\$13,990	\$15,340	\$17,620	\$23,440	\$24,980	\$26,620	\$6,164,680
EK	BASIN	\$400	\$450	\$570	\$680	\$800	\$850	\$890	\$940	\$940	\$1,050	\$1,280	\$1,860	\$1,990	\$2,130	\$632,917
	PIPE	\$1,780	\$2,010	\$2,670	\$2,900	\$3,150	\$3,280	\$3,380	\$3,470	\$3,470	\$3,720	\$3,970	\$4,610	\$4,880	\$5,150	\$2,364,726
	TOTAL	\$2,180	\$2,460	\$3,240	\$3,580	\$3,950	\$4,130	\$4,270	\$4,410	\$4,410	\$4,770	\$5,250	\$6,470	\$6,870	\$7,280	\$2,997,643
EL	BASIN	\$1,920	\$2,180	\$2,740	\$3,280	\$3,830	\$4,100	\$4,310	\$4,520	\$4,520	\$5,060	\$6,150	\$8,940	\$9,580	\$10,270	\$924,060
	PIPE	\$1,490	\$1,680	\$2,240	\$2,430	\$2,640	\$2,740	\$2,830	\$2,900	\$2,900	\$3,110	\$3,320	\$3,860	\$4,080	\$4,300	\$398,470
	TOTAL	\$3,410	\$3,860	\$4,970	\$5,710	\$6,470	\$6,840	\$7,140	\$7,420	\$7,420	\$8,170	\$9,470	\$12,800	\$13,660	\$14,570	\$1,322,530
EM	BASIN	\$1,660	\$1,890	\$2,370	\$2,830	\$3,310	\$3,550	\$3,730	\$3,910	\$3,910	\$4,380	\$5,320	\$7,740	\$8,290	\$8,880	\$2,163,370
	PIPE	\$2,760	\$3,110	\$4,130	\$4,490	\$4,880	\$5,070	\$5,240	\$5,370	\$5,370	\$5,760	\$6,140	\$7,140	\$7,550	\$7,960	\$2,764,100
	TOTAL	\$4,420	\$5,000	\$6,500	\$7,320	\$8,190	\$8,620	\$8,970	\$9,280	\$9,280	\$10,140	\$11,460	\$14,880	\$15,840	\$16,840	\$4,927,470

DRAINAGE FEE SCHEDULE FOR ZONE 1: PLANNED LOCAL DRAINAGE AREAS

Area		AE-5, A-L, O	A1, A2, RR	R-1-E, R-1-EH, R-A	R-1-A, R-1-AH	R-1-B, R-1-C, RE	R-1 40%	R-1 45%	R-1 50%	R-2, M-H	R-3	R-4, T-P	M-1, M-2, M-3, C-R, M-1-P, S-L	C-P, C-M, R-P	C-1, C-2, C-3, C-4, C-5, C-6, C-L, P	Total Cost
EN	BASIN	\$1,430	\$1,630	\$2,040	\$2,440	\$2,860	\$3,060	\$3,210	\$3,370	\$3,370	\$3,770	\$4,580	\$6,670	\$7,140	\$7,660	\$2,114,525
	PIPE	\$4,190	\$4,730	\$6,280	\$6,820	\$7,410	\$7,700	\$7,960	\$8,160	\$8,160	\$8,750	\$9,340	\$10,840	\$11,470	\$12,100	\$5,170,357
	TOTAL	\$5,620	\$6,360	\$8,320	\$9,260	\$10,270	\$10,760	\$11,170	\$11,530	\$11,530	\$12,520	\$13,920	\$17,510	\$18,610	\$19,760	\$7,284,882
EO	BASIN	\$2,520	\$2,880	\$3,610	\$4,310	\$5,040	\$5,400	\$5,680	\$5,950	\$5,950	\$6,660	\$8,100	\$11,780	\$12,610	\$13,520	\$4,179,720
	PIPE	\$2,140	\$2,420	\$3,220	\$3,500	\$3,800	\$3,950	\$4,070	\$4,180	\$4,180	\$4,480	\$4,780	\$5,550	\$5,880	\$6,200	\$2,962,960
	TOTAL	\$4,660	\$5,300	\$6,830	\$7,810	\$8,840	\$9,350	\$9,750	\$10,130	\$10,130	\$11,140	\$12,880	\$17,330	\$18,490	\$19,720	\$7,142,680
NN	BASIN	\$800	\$910	\$1,140	\$1,370	\$1,600	\$1,710	\$1,800	\$1,890	\$1,890	\$2,110	\$2,570	\$3,730	\$4,000	\$4,280	\$2,006,460
	PIPE	\$3,260	\$3,690	\$4,890	\$5,320	\$5,770	\$6,000	\$6,200	\$6,360	\$6,360	\$6,820	\$7,270	\$8,450	\$8,940	\$9,430	\$6,353,980
	TOTAL	\$4,060	\$4,600	\$6,030	\$6,690	\$7,370	\$7,710	\$8,000	\$8,250	\$8,250	\$8,930	\$9,840	\$12,180	\$12,940	\$13,710	\$8,360,440
1G	BASIN	\$1,330	\$1,330	\$1,670	\$1,990	\$2,330	\$2,500	\$2,620	\$2,750	\$2,750	\$3,080	\$3,740	\$5,450	\$5,830	\$6,250	\$1,660,870
	PIPE	\$1,380	\$1,380	\$1,830	\$1,980	\$2,150	\$2,240	\$2,310	\$2,370	\$2,370	\$2,540	\$2,710	\$3,150	\$3,330	\$3,520	\$1,541,159
	TOTAL	\$2,710	\$2,710	\$3,500	\$3,970	\$4,480	\$4,740	\$4,930	\$5,120	\$5,120	\$5,620	\$6,450	\$8,600	\$9,160	\$9,770	\$3,202,029
3G	BASIN	\$2,130	\$2,430	\$3,050	\$3,650	\$4,270	\$4,560	\$4,800	\$5,030	\$5,030	\$5,630	\$6,850	\$9,960	\$10,670	\$11,430	\$4,649,160
	PIPE	\$2,260	\$2,560	\$3,390	\$3,690	\$4,010	\$4,160	\$4,300	\$4,410	\$4,410	\$4,730	\$5,050	\$5,860	\$6,200	\$6,540	\$4,154,740
	TOTAL	\$4,390	\$4,990	\$6,440	\$7,340	\$8,280	\$8,720	\$9,100	\$9,440	\$9,440	\$10,360	\$11,900	\$15,820	\$16,870	\$17,970	\$8,803,900
7C	BASIN	\$1,810	\$1,810	\$2,260	\$2,710	\$3,170	\$3,390	\$3,560	\$3,740	\$3,740	\$4,180	\$5,080	\$7,400	\$7,920	\$8,490	\$3,220,892
	PIPE	\$1,820	\$1,820	\$2,410	\$2,620	\$2,850	\$2,960	\$3,060	\$3,140	\$3,140	\$3,360	\$3,590	\$4,170	\$4,410	\$4,650	\$2,323,081
	TOTAL	\$3,630	\$3,630	\$4,670	\$5,330	\$6,020	\$6,350	\$6,620	\$6,880	\$6,880	\$7,540	\$8,670	\$11,570	\$12,330	\$13,140	\$5,543,973
7D	BASIN	\$1,870	\$2,140	\$2,680	\$3,200	\$3,750	\$4,010	\$4,210	\$4,420	\$4,420	\$4,940	\$6,010	\$8,750	\$9,370	\$10,040	\$3,284,020
	PIPE	\$1,640	\$1,850	\$2,460	\$2,670	\$2,900	\$3,020	\$3,120	\$3,200	\$3,200	\$3,430	\$3,660	\$4,250	\$4,490	\$4,740	\$1,989,340
	TOTAL	\$3,510	\$3,990	\$5,140	\$5,870	\$6,650	\$7,030	\$7,330	\$7,620	\$7,620	\$8,370	\$9,670	\$13,000	\$13,860	\$14,780	\$5,273,360
*Note: A surcharge fee is in effect in addition to the rates per Board Resolution No. 2005-480 adopted November 16, 2005 & Board Resolution No. 2018-000 adopted December 12, 2018																
7H	BASIN	\$1,760	\$2,000	\$2,510	\$3,010	\$3,520	\$3,760	\$3,960	\$4,150	\$4,150	\$4,640	\$5,640	\$8,210	\$8,790	\$9,420	\$3,986,560
	PIPE	\$3,240	\$3,660	\$4,860	\$5,280	\$5,730	\$5,960	\$6,150	\$6,320	\$6,320	\$6,770	\$7,220	\$8,390	\$8,880	\$9,360	\$5,201,620
	TOTAL	\$5,000	\$5,660	\$7,370	\$8,290	\$9,250	\$9,720	\$10,110	\$10,470	\$10,470	\$11,410	\$12,860	\$16,600	\$17,670	\$18,780	\$9,188,180
*Note: A surcharge fee is in effect in addition to the rates per Board Resolution No. 2005-480 adopted November 16, 2005.																

DRAINAGE FEE SCHEDULE FOR ZONE 2: PLANNED LOCAL DRAINAGE AREAS

Area	AE-5, A-L, O	A1, A2, RR	R-1-E, R-1-EH, R-A	R-1-A, R-1-AH	R-1-B, R-1-C, RE	R-1 40%	R-1 45%	R-1 50%	R-2, M-H	R-3	R-4, T-P	M-1, M-2, M-3, C-R, M-1-P, S-L	C-P, C-M, R-P	C-1, C-2, C-3, C-4, C-5, C-6, C-L, P	Total Cost
Zone 2															
BASIN	\$660	\$750	\$940	\$1,120	\$1,310	\$1,410	\$1,480	\$1,550	\$1,550	\$1,730	\$2,110	\$3,070	\$3,280	\$3,520	\$73,987,655
PIPE	\$1,490	\$1,690	\$2,240	\$2,430	\$2,640	\$2,750	\$2,840	\$2,910	\$2,910	\$3,120	\$3,330	\$3,870	\$4,090	\$4,310	\$117,952,531
TOTAL	\$2,150	\$2,440	\$3,180	\$3,550	\$3,950	\$4,160	\$4,320	\$4,460	\$4,460	\$4,850	\$5,440	\$6,940	\$7,370	\$7,830	\$191,940,186

Planned Local Drainage Areas: Zone 2

Area	Basin Cost	Pipe Cost	Total	Area	Basin Cost	Pipe Cost	Total	Area	Basin Cost	Pipe Cost	Total
A	\$2,007,154	\$1,139,822	\$3,146,976	X	\$1,618,049	\$449,059	\$2,067,108	OO	\$1,755,335	\$730,703	\$2,486,038
B	\$911,973	\$142,170	\$1,054,143	Y	\$1,086,679	\$2,324,360	\$3,411,039	PP	\$1,472,739	\$1,187,576	\$2,660,315
C	\$479,953	\$319,598	\$799,551	Z	\$1,107,403	\$2,528,057	\$3,635,460 **	RR	\$4,900,427	\$17,649,602	\$22,550,029
D	\$801,394	\$694,153	\$1,495,547	AA	\$965,261	\$1,205,417	\$2,170,678	SS	\$2,030,231	\$2,381,308	\$4,411,539
E	\$676,888	\$228,063	\$904,951	BB	\$487,096	\$822,774	\$1,309,870	TT	\$1,571,331	\$1,461,486	\$3,032,817
F	\$271,155	\$302,016	\$573,171	CC	\$492,811	\$2,085,646	\$2,578,457	UU1	\$474,282	\$817,914	\$1,292,196
G	\$1,141,795	\$157,007	\$1,298,802	CO2	\$892,058	\$1,424,260	\$2,316,318	UU2	\$1,409,984	\$1,679,734	\$3,089,718
H	\$99,858	\$214,682	\$314,540	DD	\$1,729,222	\$7,531,637	\$9,260,859	UU3	\$2,826,638	\$7,499,644	\$10,326,282
I	\$227,828	\$254,359	\$482,187	EE	\$754,118	\$3,357,071	\$4,111,189	VV	\$34,124	\$119,582	\$153,706
J	\$1,588,858	\$358,003	\$1,946,861	FF	\$1,430,542	\$9,501,599	\$10,932,141	WW	\$18,653	\$360,044	\$378,697
K	\$847,176	\$679,595	\$1,526,771	GG	\$2,106,941	\$1,428,508	\$3,535,449	XX	\$1,025,092	\$2,131,311	\$3,156,403
L	\$595,680	\$491,234	\$1,086,914	HH	\$3,399,247	\$4,592,465	\$7,991,712	ZZ	\$2,329,937	\$2,418,370	\$4,748,307
M	\$802,300	\$259,796	\$1,062,096	II1	\$4,072,032	\$16,039,997	\$20,112,029				
N	\$422,781	\$437,326	\$860,107	II2	\$6,895,010	\$1,242,412	\$8,137,422				
O	\$986,910	\$193,195	\$1,180,105	II3	\$1,551,864	\$1,233,424	\$2,785,288				
P	\$719,364	\$277,552	\$996,916	II4	\$1,983,997	\$1,106,558	\$3,090,555				
T	\$1,534,590	\$2,013,650	\$3,548,240	JJ	\$1,753,002	\$3,837,976	\$5,590,978				
U	\$1,197,090	\$660,279	\$1,857,369	KK	\$1,664,766	\$1,505,479	\$3,170,245				
V	\$648,023	\$1,726,395	\$2,374,418	LL	\$1,846,807	\$2,871,654	\$4,718,461				
W	\$1,786,458	\$2,920,713	\$4,707,171	MM	\$554,749	\$957,296	\$1,512,045				

Z ** Note: A surcharge fee is in effect in addition to the rates per Board Resolution No. 1386 adopted October 13, 1987.

DRAINAGE FEE SCHEDULE FOR ZONE 3: PLANNED LOCAL DRAINAGE AREAS

Area		AE-5, A-L, O	A1, A2, RR	R-1-E, R-1-EH, R-A	R-1-A, R-1-AH	R-1-B, R-1-C, RE	R-1 40%	R-1 45%	R-1 50%	R-2, M-H	R-3	R-4, T-P	M-1, M-2, M-3, C-R, M-1-P, S-L	C-P, C-M, R-P	C-1, C-2, C-3, C-4, C-5, C-6, C-L, P	Total Cost
Zone 3	BASIN	\$1,270	\$1,450	\$1,810	\$2,170	\$2,540	\$2,720	\$2,860	\$3,000	\$3,000	\$3,350	\$4,070	\$5,930	\$6,350	\$6,800	\$23,429,460
	PIPE	\$1,470	\$1,660	\$2,200	\$2,390	\$2,600	\$2,700	\$2,790	\$2,860	\$2,860	\$3,070	\$3,270	\$3,800	\$4,020	\$4,240	\$19,375,810
	TOTAL	\$2,740	\$3,110	\$4,010	\$4,560	\$5,140	\$5,420	\$5,650	\$5,860	\$5,860	\$6,420	\$7,340	\$9,730	\$10,370	\$11,040	\$42,805,270

Planned Local Drinage Areas: Zone 3

Area	Basin Cost	Pipe Cost	Total
Q	\$413,775	\$411,805	\$825,580
S	\$1,317,413	\$2,163,855	\$3,481,268
1E	\$1,902,108	\$912,242	\$2,814,350
2D	\$774,974	\$1,253,973	\$2,028,947
3A	\$1,147,120	\$802,896	\$1,950,016
3D	\$1,353,893	\$1,032,196	\$2,386,089
3F	\$1,035,520	\$1,229,984	\$2,265,504
4B	\$1,231,705	\$862,090	\$2,093,795
4C	\$1,128,211	\$2,398,584	\$3,526,795
4D	\$3,532,013	\$890,546	\$4,422,559
4E	\$2,924,869	\$2,119,501	\$5,044,370
5B/5C	\$3,843,239	\$2,180,847	\$6,024,086
5F	\$1,460,952	\$1,530,399	\$2,991,351
6D	\$1,363,668	\$1,586,892	\$2,950,560

DRAINAGE FEE SCHEDULE FOR SURCHARGE AREAS: PLANNED LOCAL DRAINAGE AREAS

Area		AE-5, A-L, O	A1, A2, RR	R-1-E, R-1-EH, R-A	R-1-A, R-1-AH	R-1-B, R-1-C, RE	R-1 40%	R-1 45%	R-1 50%	R-2, M-H	R-3	R-4, T-P	M-1, M-2, M-3, C-R, M-1-P, S-L	C-P, C-M, R-P	C-1, C-2, C-3, C-4, C-5, C-6, C-L, P
W	TOTAL	-	-	-	-	-	-	-	-	-	-	-	\$11,075	-	-
	*Note: Resolution No. 885-BPBR														
Z	TOTAL	-	-	-	-	-	-	-	-	\$1,970	\$2,110	\$2,250	\$2,615	\$5,380	\$2,915
	*Note: Resolution No. 1227, 1386, 1268, 1265														
BX	TOTAL	-	\$270	\$360	\$390	\$430	\$445	\$445	\$445	\$470	\$510	\$540	\$630	\$660	\$700
	*Note: Resolution No. 2008-590														
BX	TOTAL	-	-	-	-	-	-	-	-	-	-	-	-	\$9,140	-
	*Note: Resolution No. 2017-864, 2017-884														
CM	TOTAL	\$90	\$105	\$135	\$145	\$160	\$165	\$165	\$165	\$175	\$185	\$200	\$235	\$485	\$260
	*Note: Resolution No. 1228														
CN	TOTAL	-	-	-	-	-	-	-	-	\$2,200	\$2,395	\$2,695	\$3,465	\$3,690	\$3,925
	*Note: Resolution No. 1159, 1422														
DE	TOTAL	-	-	-	-	-	\$790	\$790	\$790	\$840	\$900	-	\$1,120	\$1,250	\$1,250
	*Note: Resolution No. 2006-486														
DN	TOTAL	-	-	-	-	-	\$8,140	\$8,400	\$8,620	\$8,620	-	-	-	-	\$12,780
	*Note: Resolution No. 2016-840, 2017-884														
DO	TOTAL	-	-	-	-	-	-	-	\$3,550	\$3,550	\$3,800	\$4,050	\$4,710	\$4,980	\$5,250
	*Note: Resolution No. 2007-522, 2014-806, 2018-887														
7D	TOTAL	\$3,651	\$3,651	\$3,651	\$3,651	\$3,651	\$3,651	\$3,651	\$3,651	\$3,651	\$3,651	\$3,651	\$3,651	\$3,651	\$3,651
	*Note: Resolution No. 2005-480														
7H	TOTAL	\$3,372	\$3,372	\$3,372	\$3,372	\$3,372	\$3,372	\$3,372	\$3,372	\$3,372	\$3,372	\$3,372	\$3,372	\$3,372	\$3,372
	*Note: Resolution No. 2005-480														

