

BEFORE THE BOARD OF SUPERVISORS
OF THE COUNTY OF FRESNO
STATE OF CALIFORNIA

IN THE MATTER OF REVISING THE)
COUNTY MAINTAINED ROAD MILEAGE)

RESOLUTION

WHEREAS, Section 2121 of the Streets and Highways Code provides that in May of each year, each County shall submit to the California Department of Transportation any additions to or subtractions from its mileage of maintained County roads, specifying the termini and mileage of each route added or subtracted; and

WHEREAS, the Department of Transportation certified to the State Controller in the year 2018 that the total mileage of maintained Fresno County roads for the year ending December 31, 2017 was approximately 3,495.98 miles.

NOW THEREFORE IT BE RESOLVED, that the total mileage of maintained County roads as of December 31, 2018 be declared as approximately 3,488.48 miles, in accordance with the adjustments to the tabulation marked Exhibit A, and as indicated on the set of map excerpts marked Exhibit B. Both Exhibits are hereby incorporated as a part of this Resolution by reference thereto.

BE IT FURTHER RESOLVED AND ORDERED, that duplicate copies of the hereinabove said Exhibits A and B shall be filed in the office of the Director of the Department of Public Works and Planning of the County of Fresno.

\\

\\

\\

\\


1 THE FOREGOING, was passed and adopted by the following vote of the Board of Supervisors
2 of the County of Fresno this 7th day of May 2019, to wit:

3
4 AYES: Supervisors Brandau, Magsig, Mendes, Pacheco, Quintero

5 NOES: None

6 ABSENT: None

7 ABSTAINED: None
8

9
10 
11 Nathan Magsig, Chairman of the Board of
Supervisors of the County of Fresno

12 ATTEST:
13 Bernice E. Seidel
14 Clerk of the Board of Supervisors
County of Fresno, State of California

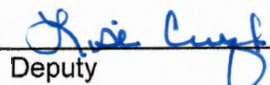
15
16 By 
17 Deputy

EXHIBIT A

SUMMARY OF CHANGES

2017 MAINTAINED MILEAGE BALANCE FORWARD:

3495.984

ROAD	START	END	LENGTH	MAP NO.	MEMO:
------	-------	-----	--------	---------	-------

REDUCTIONS:ANNEXATIONS:

DE WOLF	SHAW	0.255 N/O SHAW	0.255	10N44	Annexed to City of Clovis 02/15/2018 (01/29/18)
FOWLER N/B	0.222 S/O CHURCH	JENSEN	0.288	10N54	Annexed to City of Fresno 02/23/2018
JENSEN W/B	FOWLER	ARMSTRONG	0.501	10N54	Annexed to City of Fresno 02/23/2018
JENSEN E/B	FOWLER	ARMSTRONG	0.501	10N54	Annexed to City of Fresno 02/23/2018
ARMSTRONG	0.251 S/O CHURCH	JENSEN	0.258	10N54	Annexed to City of Fresno 02/23/2018
LEONARD	SHAW	0.256 N/O SHAW	0.256	10N44	Annexed to City of Clovis 03/19/2018
ASHLAN	0.252 W/O HIGHLAND	HIGHLAND	0.252	10N44	Annexed to City of Clovis 04/16/2018
ASHLAN	HIGHLAND	THOMPSON	0.477	10N44	Annexed to City of Clovis 04/16/2018
HIGHLAND	0.250 N/O DAKOTA	ASHLAN	0.252	10N44	Annexed to City of Clovis 04/16/2018
THOMPSON	0.188 N/O DAKOTA	ASHLAN	0.314	10N44	Annexed to City of Clovis 04/16/2018
KAMM	MENDOCINO	0.258 E/O MENDOCINO (C.L.)	0.258	10P25	Annexed to City of Kingsburg 05/02/2018
MENDOCINO	0.125 S/O CARUTHERS	0.250 S/O CARUTHERS	0.125	10P25	Annexed to City of Kingsburg 05/02/2018
MENDOCINO	KAMM	KINGSBURG U.L.	0.125	10P25	Annexed to City of Kingsburg 05/02/2018
BULLARD	0.140 E/O VAN NESS (C.L.)	VAN NESS	0.140	10N42	Annexed to City of Fresno 07/25/2018
VAN NESS	0.067 S/O BULLARD	BULLARD	0.067	10N42	Annexed to City of Fresno 07/25/2018
VAN NESS	BULLARD	FRESNO C.L.	0.030	10N42	Annexed to City of Fresno 07/25/2018
BELMONT W/B	0.220 E/O FOWLER	0.314 E/O FOWLER	0.094	10N44	Annexed to City of Fresno 08/15/2018
KAMM	0.071 E/O ACADEMY	0.246 E/O ACADEMY (C.L.)	0.175	10P25	Annexed to City of Kingsburg 05/02/2018
FOWLER	TEAGUE	COLE	0.241	10N34	Annexed to City of Clovis 09/10/2018
FOWLER	COLE	0.083 N/O COLE (C.L.)	0.083	10N34	Annexed to City of Clovis 09/10/2018
TEAGUE	0.244 W/O FOWLER	FOWLER	0.244	10N34	Annexed to City of Clovis 09/10/2018
BRYAN	0.500 N/O ASHLAN	0.600 N/O ASHLAN	0.100	10N41	Annexed to City of Fresno 09/17/2018
BRYAN	0.600 N/O ASHLAN	0.301 S/O SHAW	0.096	10N41	Annexed to City of Fresno 09/17/2018
HAYES	0.497 S/O SHAW	SHAW	0.497	10N42	Annexed to City of Fresno 09/17/2018
SHAW	HAYES	BRYAN	0.499	10N42	Annexed to City of Fresno 09/17/2018
ALLUVIAL	0.102 W/O PAULA	PAULA	0.102	10N33	Annexed to City of Fresno 10/10/2018
ALLUVIAL	PAULA	0.066 E/O PAULA	0.066	10N33	Annexed to City of Fresno 10/10/2018
ALLUVIAL	0.066 E/O PAULA	0.063 W/O WILLOW	0.058	10N33	Annexed to City of Fresno 10/10/2018
SHEPHERD	PREUSS	0.110 W/O SUNNYSIDE	0.262	10N34	Annexed to City of Clovis 12/19/2018
SUNNYSIDE	SHEPHERD	LEXINGTON	0.304	10N34	Annexed to City of Clovis 12/19/2018
SUNNYSIDE	LEXINGTON	PERRIN	0.202	10N34	Annexed to City of Clovis 12/19/2018
BUTTONWILLOW	0.129 N/O MANNING	MANNING	0.129	11P11	Annexed to City of Reedley 12/19/2018
MANNING	BUTTONWILLOW	REEDLEY U.L.	0.100	11P11	Annexed to City of Reedley 12/19/2018
MANNING	REEDLEY U.L.	0.248 W/O ZUMWALT	0.149	11P11	Annexed to City of Reedley 12/19/2018

ROAD	START	END	LENGTH	MAP NO.	MEMO:
			Total Annexed:	7.500	
VACATIONS:					
CORRECTIONS:					
			Total Vacated:	0.000	
			Total Corrections:	0.000	
			<u>TOTAL REDUCTIONS:</u>	<u>7.500</u>	
ADDITIONS:					
CORRECTIONS:					
RELINQUISHMENTS:					
			Total Corrections:	0.000	0.000
			Total Relinquishments:	0.000	
			<u>TOTAL ADDITIONS:</u>	<u>0.000</u>	
TOTAL 2018 MAINTAINED MILEAGE :				3488.484	

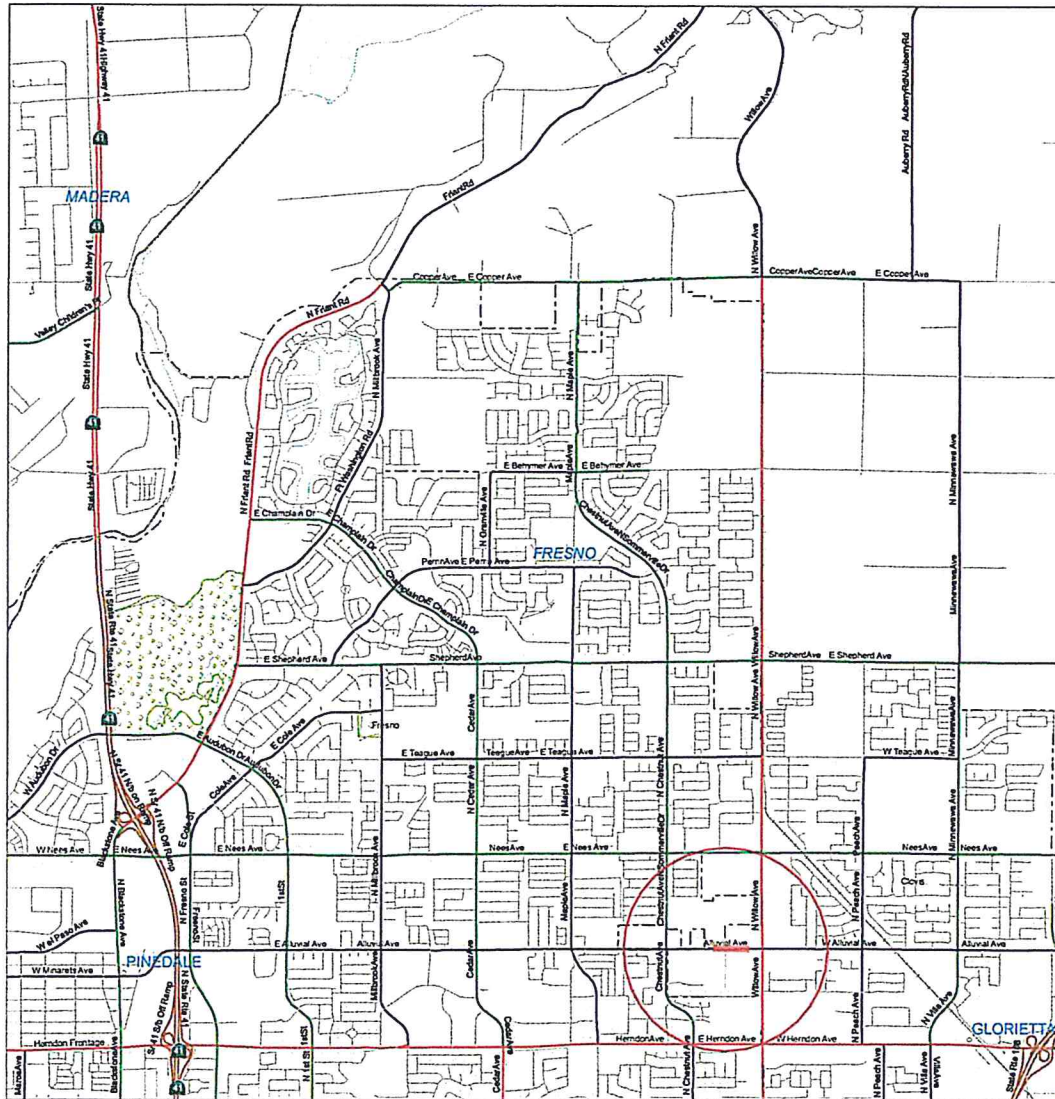
Abbreviations: C.L.= City Limits S/O = South of
U.L. -Urban Limits E/O = East of
N/O = North of W/O =West of

EXHIBIT "B"
10N33

SEE MAP 10N23

SEE MAP 10N32

SEE MAP 10N34



APPROVED Date 8/5/11
FEDERAL HIGHWAY ADMINISTRATION

FOR: VINCENT P. DALLMANN
DIVISION ADMINISTRATOR

0 0.75 1.5 2.25 3.0 3.75 4.5 5.25 6.0 Miles
0 1,000 2,000 3,000 4,000 5,000 Feet

STATE OF CALIFORNIA
DEPARTMENT OF TRANSPORTATION
In Cooperation with the
FEDERAL HIGHWAY ADMINISTRATION
AND LOCAL AGENCIES



SEE MAP 10N43

SIGN ROUTES



FUNCTIONAL CLASSIFICATION SYSTEM

INTERSTATE	1
OTHER FURY OR EQUIV	2
OTHER PRINCIPAL ARTERIAL	3
MINOR ARTERIAL	4
MAJOR COLLECTOR	5
MINOR COLLECTOR	6
LOCAL	7



MAP 10N33

Fresno - Madera CALIFORNIA ROAD SYSTEM

EXHIBIT "B"
10N34

SEE MAP 10N

SEE MAP 10N33

SEE MAP 10N35

FRESNO

APPROVED Date 8/5/11
FEDERAL HIGHWAY ADMINISTRATION

Wesley R. Patterson
FOR: VINCENT P. D'AMICO
DIVISION ADMINISTRATOR

0 0.75 1.5 3.0 4.5 6.0 Miles
0 1,000 2,000 3,000 4,000 5,000 Feet

STATE OF CALIFORNIA
DEPARTMENT OF TRANSPORTATION
In Cooperation with the
FEDERAL HIGHWAY ADMINISTRATION
AND LOCAL AGENCIES



SEE MAP 10N44

SIGN ROUTES
INTERSTATE
U.S.
STATE
COUNTY

FUNCTIONAL CLASSIFICATION SYSTEM
INTERSTATE 1
OTHER FHWY OR ESPWY 2
OTHER PRINCIPAL ARTERIAL 3
MINOR ARTERIAL 4
MAJOR COLLECTOR 5
MINOR COLLECTOR 6
LOCAL 7



MAP 10N34

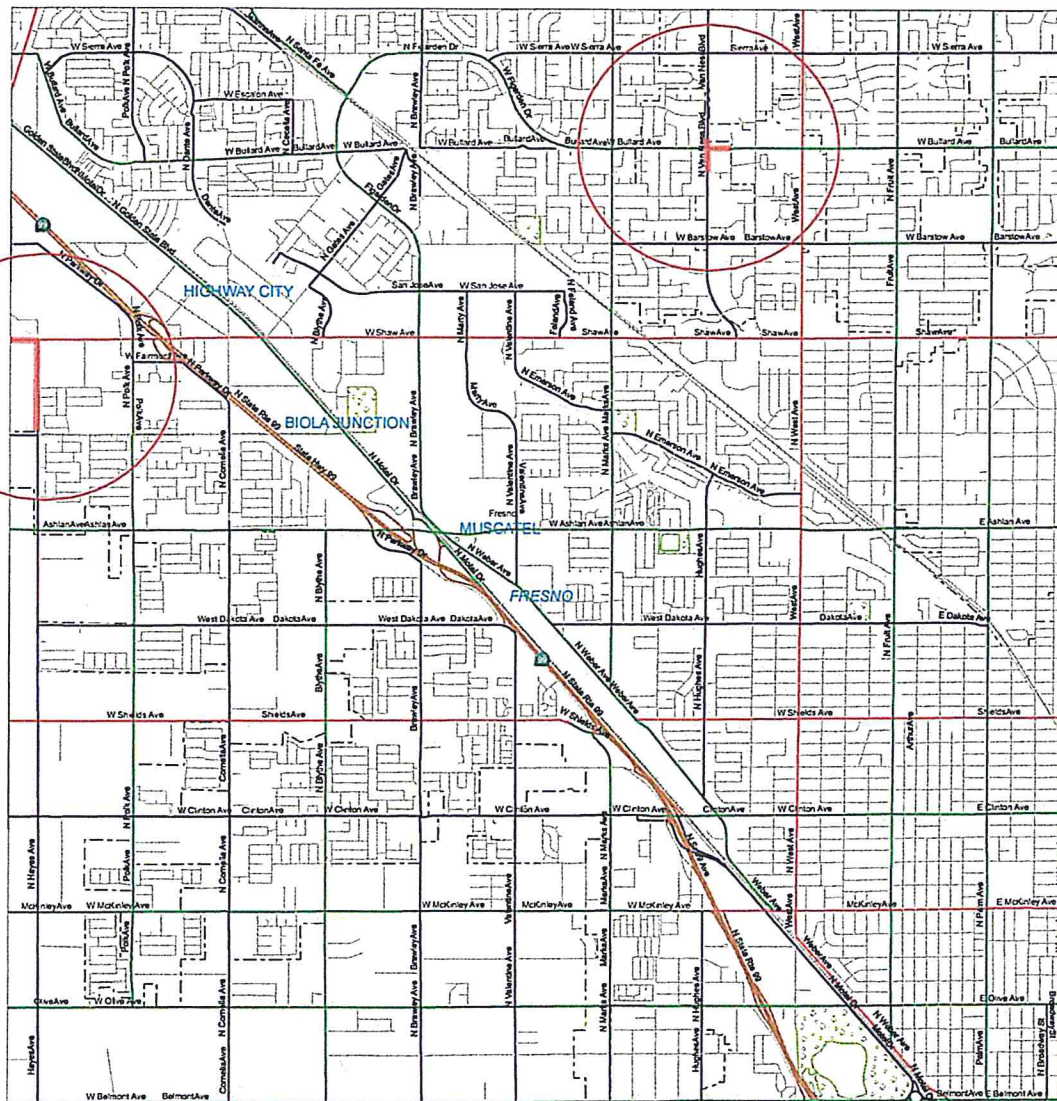
Fresno CALIFORNIA ROAD SYSTEM

EXHIBIT "B"
10N42

SEE MAP 10N32

SEE MAP 10N41

SEE MAP 10N43



APPROVED Date 8/5/11
FEDERAL HIGHWAY ADMINISTRATION
Walter R. R. R.
FOR: VINCENT P. GORMAN
DIVISION ADMINISTRATOR

0 0.25 0.5 1 Mile
0 1,000 2,000 3,000 4,000 5,000 Feet

STATE OF CALIFORNIA
DEPARTMENT OF TRANSPORTATION
IN COOPERATION WITH
FEDERAL HIGHWAY ADMINISTRATION
AND LOCAL AGENCIES



SEE MAP 10N52

SIGN ROUTES



FUNCTIONAL CLASSIFICATION SYSTEM

INTERSTATE	1
OTHER PRINCIPAL ARTERIAL	2
MINOR ARTERIAL	3
MAJOR COLLECTOR	4
MINOR COLLECTOR	5
LOCAL	6
LOCAL	7



MAP 10N42

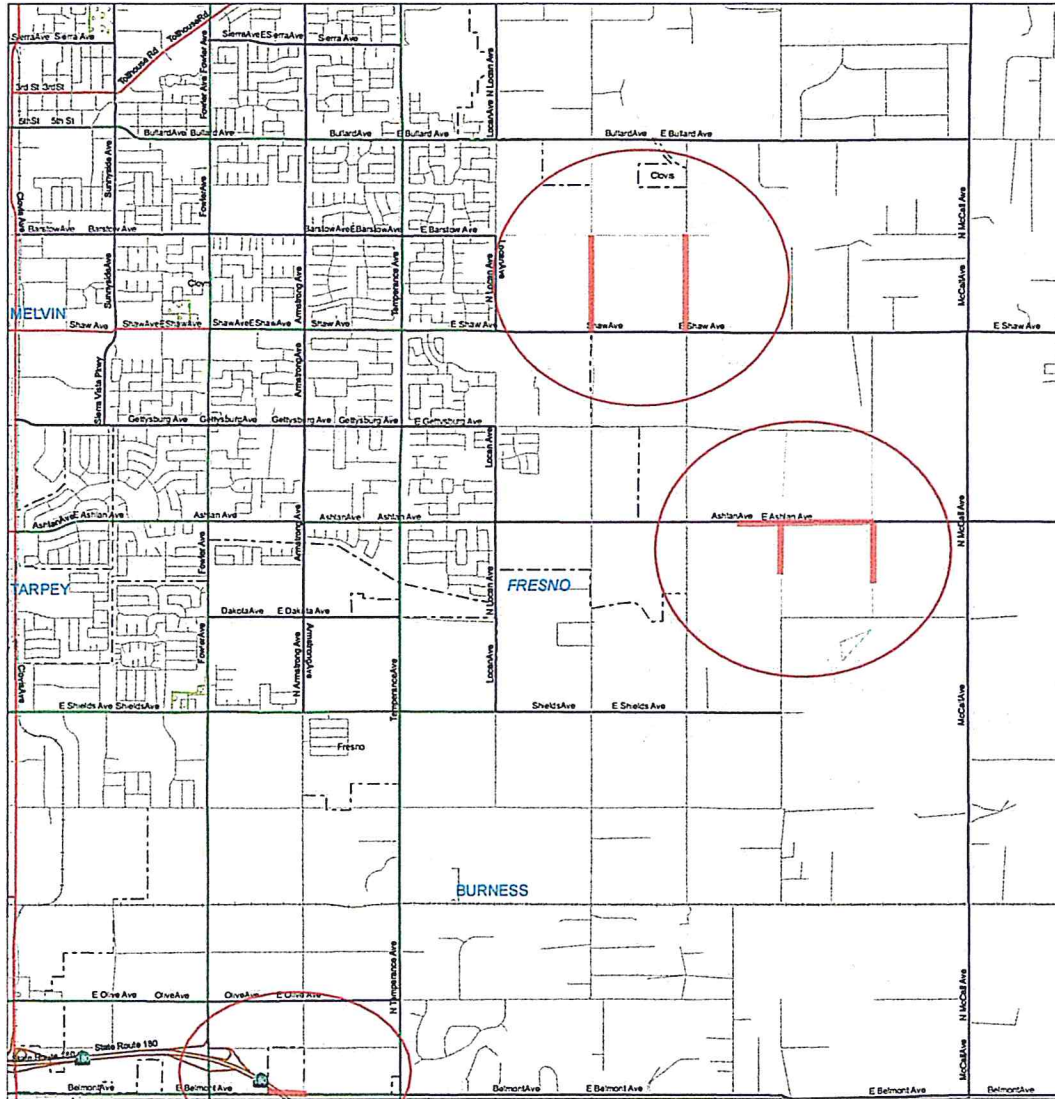
Fresno CALIFORNIA ROAD SYSTEM

EXHIBIT "B"
10N44

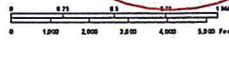
SEE MAP 10N34

SEE MAP 10N43

SEE MAP 10N45



APPROVED Date 8/5/11
FEDERAL HIGHWAY ADMINISTRATION
Wesley Rothel-Ross
FOR VINCENT P. TALLERICO
DIVISION ADMINISTRATOR



STATE OF CALIFORNIA
DEPARTMENT OF TRANSPORTATION
In cooperation with the
FEDERAL HIGHWAY ADMINISTRATION
AND LOCAL AGENCIES



SEE MAP 10N54

SIGN ROUTES
INTERSTATE
U.S.
STATE
COUNTY

FUNCTIONAL CLASSIFICATION SYSTEM

INTERSTATE	1
OTHER FHYO OR EXFHYO	2
OTHER PRINCIPAL ARTERIAL	3
MAJOR ARTERIAL	4
MINOR COLLECTOR	5
MINOR COLLECTOR	6
LOCAL	7



MAP 10N44

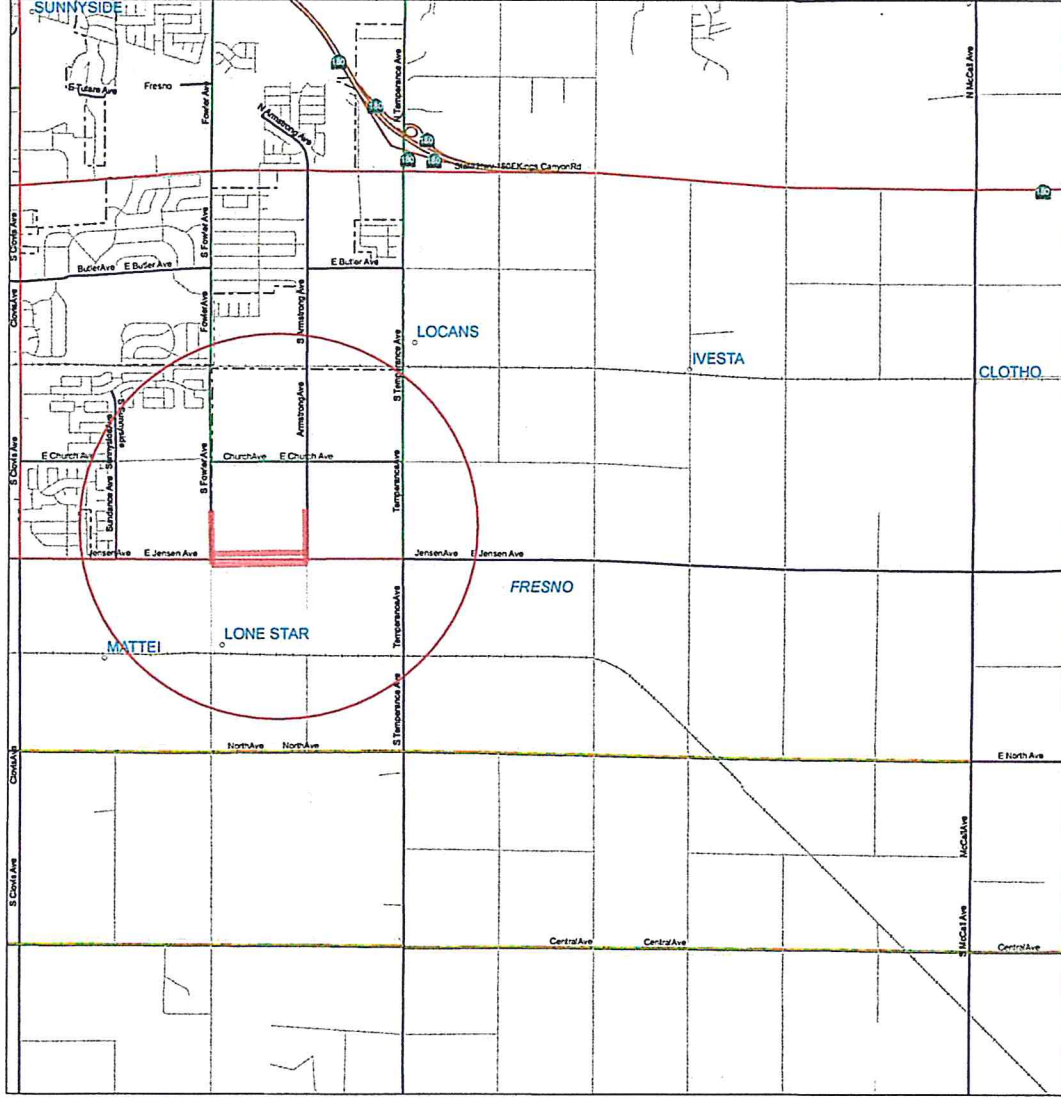
Fresno CALIFORNIA ROAD SYSTEM

EXHIBIT "B"
10N54

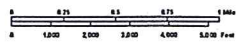
SEE MAP 10N44

SEE MAP 10N53

SEE MAP 10N55



APPROVED Date 8/5/11
FEDERAL HIGHWAY ADMINISTRATION
Walter R. Rasmussen
FOR VINCENT P. BARRON
DIVISION ADMINISTRATOR



STATE OF CALIFORNIA
DEPARTMENT OF TRANSPORTATION
In Cooperation with the
FEDERAL HIGHWAY ADMINISTRATION
AND LOCAL AGENCIES



SEE MAP 10P14

SHO ROUTES
INTERSTATE
U.S.
STATE
COUNTY

FUNCTIONAL CLASSIFICATION SYSTEM

INTERSTATE	1
OTHER FHWY OR EXPWAY	2
OTHER PRINCIPAL ARTERIAL	3
MINOR ARTERIAL	4
MAJOR COLLECTOR	5
MINOR COLLECTOR	6
LOCAL	7



MAP 10N54

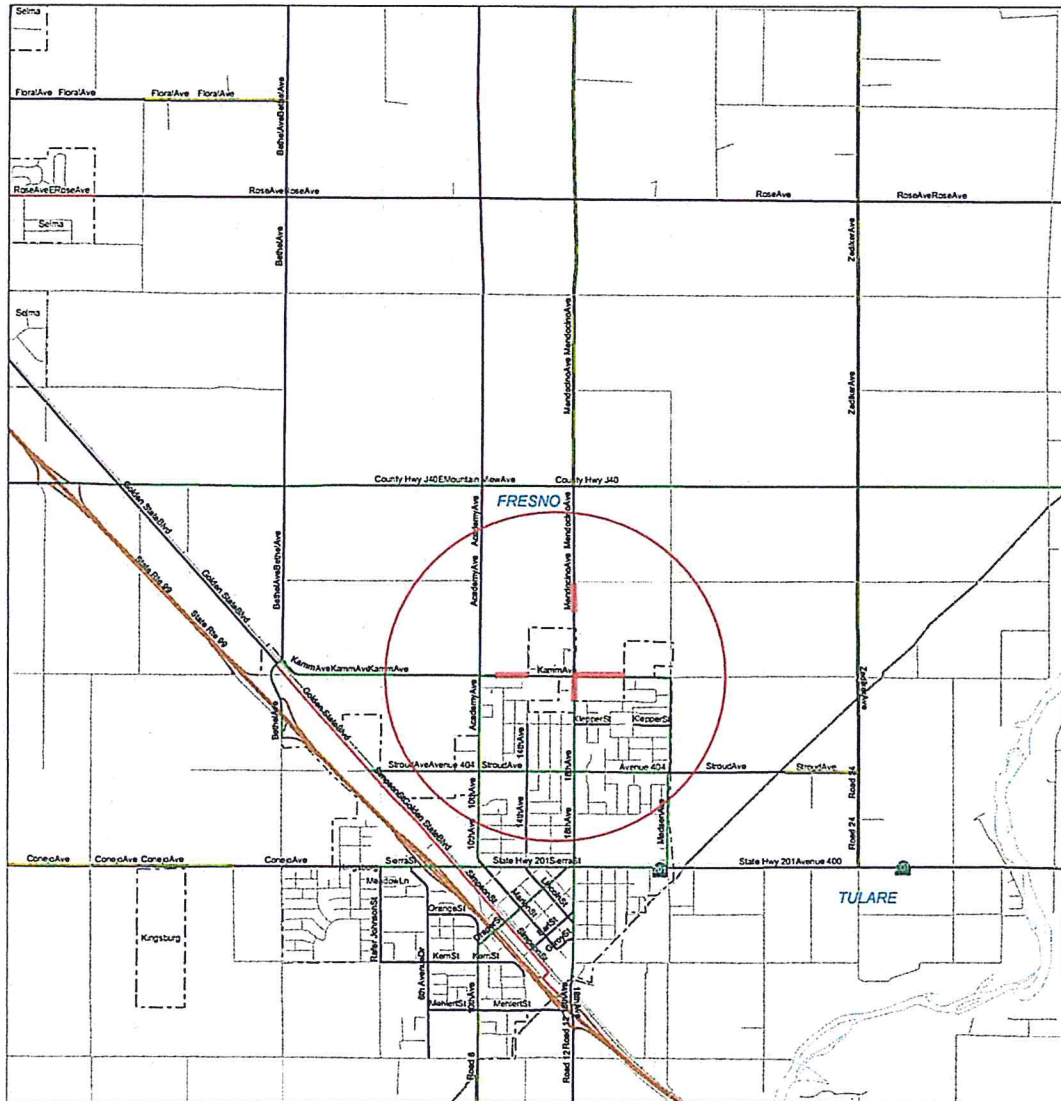
Fresno CALIFORNIA ROAD SYSTEM

EXHIBIT "B"
10P25

SEE MAP 10P15

SEE MAP 10P24

SEE MAP 11P21



APPROVED Date 8/5/11
FEDERAL HIGHWAY ADMINISTRATION
Wesley Rothel-Ross
FOR: VINCENT P. HANSHAW
DIVISION ADMINISTRATOR

0 0.25 0.5 0.75 1 Mile
0 1,000 2,000 3,000 4,000 5,000 Feet

STATE OF CALIFORNIA
DEPARTMENT OF TRANSPORTATION
In Cooperation with the
FEDERAL HIGHWAY ADMINISTRATION
AND LOCAL AGENCIES

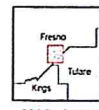


SEE MAP 10P35

SIGN ROUTES
INTERSTATE
U.S.
STATE
COUNTY

FUNCTIONAL CLASSIFICATION SYSTEM

CLASSIFICATION	LINE STYLE
INTERSTATE 1	Thick solid blue line
OTHER FHWY OR ESPWY 2	Thick solid red line
OTHER PRINCIPAL ARTERIAL 3	Thick solid green line
MAJOR ARTERIAL 4	Thick solid yellow line
MAJOR COLLECTOR 5	Thick solid orange line
MINOR COLLECTOR 6	Thick solid brown line
LOCAL 7	Thin solid black line



MAP 10P25

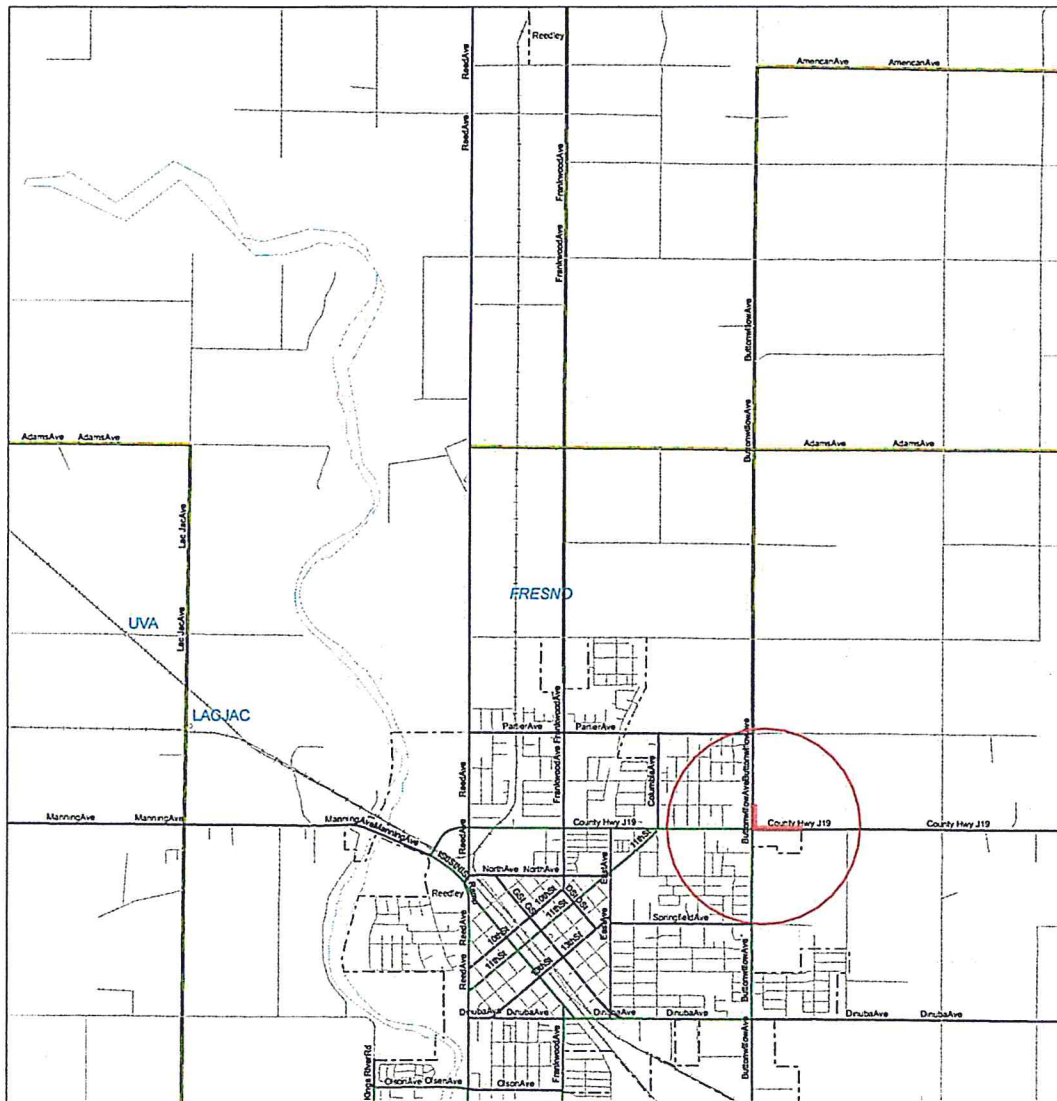
Fresno - Tulare CALIFORNIA ROAD SYSTEM

EXHIBIT "B"
11P11

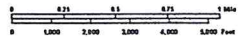
SEE MAP 11N51

SEE MAP 10P15

SEE MAP 11P12



APPROVED Date 8/5/11
FEDERAL HIGHWAY ADMINISTRATION
Wesley Rothel-Rose
FOR: VINCENT P. WANG
DIVISION ADMINISTRATOR



STATE OF CALIFORNIA
DEPARTMENT OF TRANSPORTATION
In Cooperation with the
FEDERAL HIGHWAY ADMINISTRATION
AND LOCAL AGENCIES



SEE MAP 11P21



FUNCTIONAL CLASSIFICATION SYSTEM

INTERSTATE	1
OTHER FWHY OR ESPHY	2
OTHER PRINCIPAL ARTERIAL	3
MINOR ARTERIAL	4
MAJOR COLLECTOR	5
MINOR COLLECTOR	6
LOCAL	7



MAP 11P11

Fresno CALIFORNIA ROAD SYSTEM