

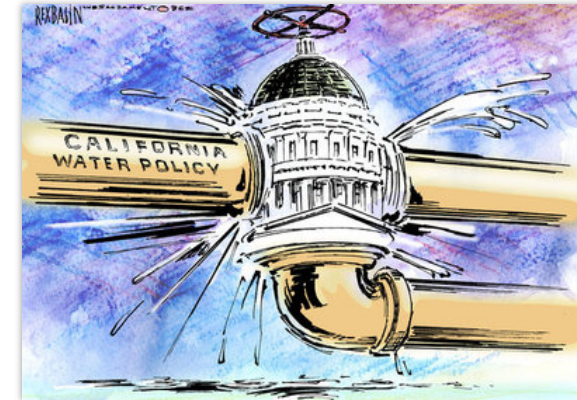


Sustainable Groundwater Management Act Update

Fresno County Board of Supervisors
May 14, 2019

What is the Sustainable Groundwater Management Act (SGMA)?

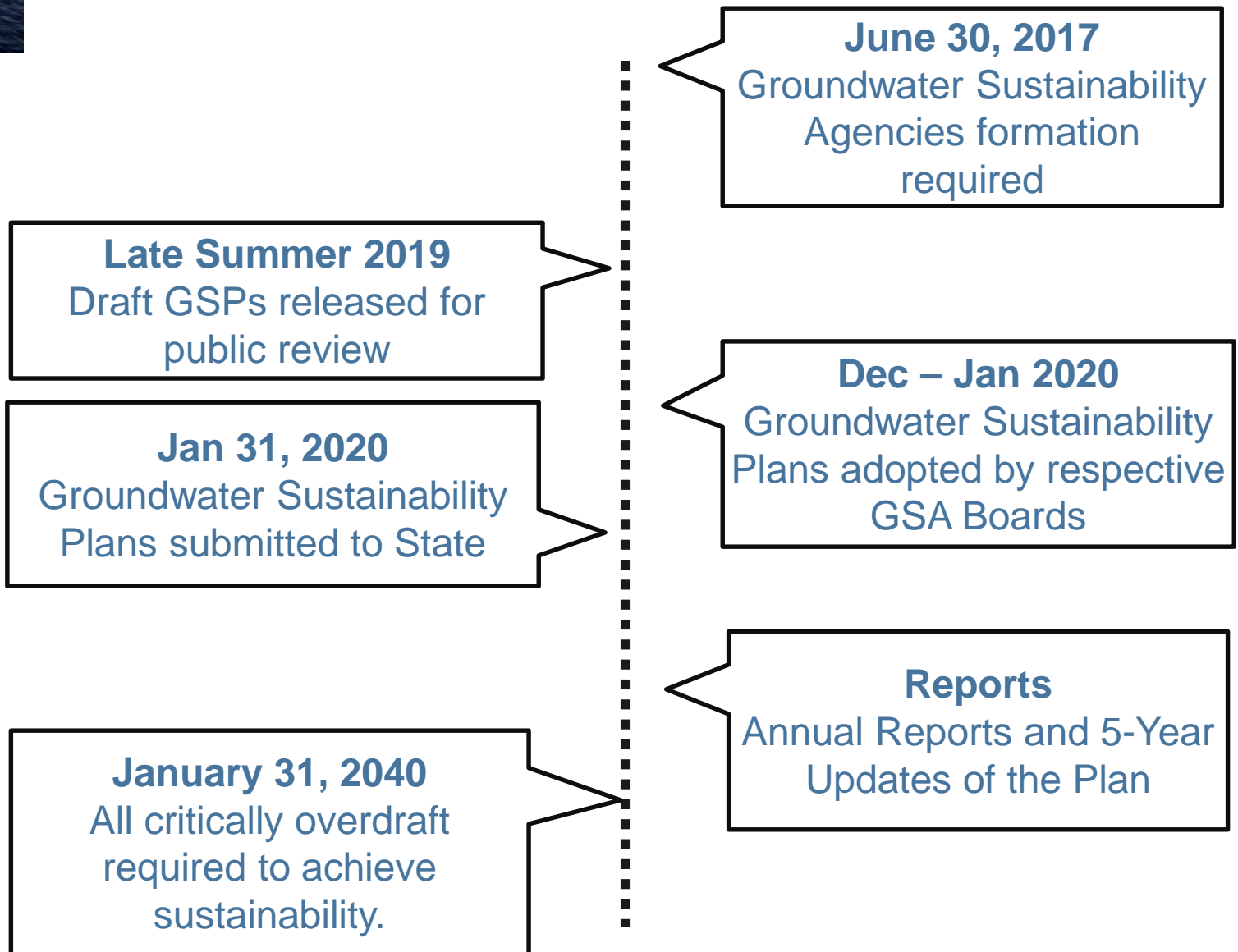
- Comprehensive legislation to manage groundwater to sustainable levels
- Adopted in 2014
- Gives local public agencies ability to form Groundwater Sustainability Agencies (GSAs) to comply with SGMA
- Local public agencies mean those with water supply, water management, or land use responsibilities within the groundwater basin – Water Code §10721(n)
- Counties are backstop to local agencies
- State will intervene if locals and counties fail



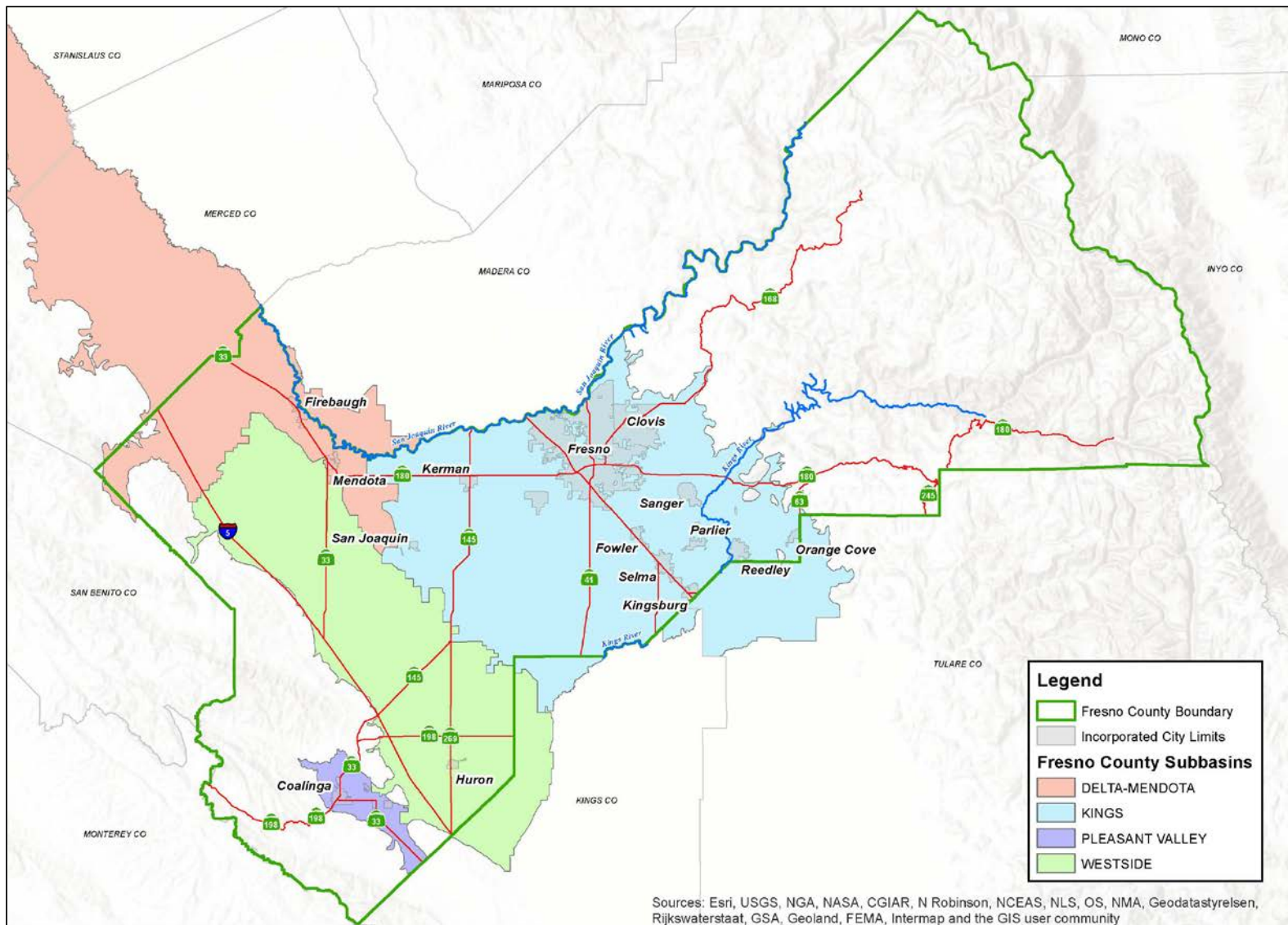
To avoid these results, GSAs are required to develop a GSP that includes:

- ✓ Description of plan area
- ✓ Groundwater conditions
- ✓ Water budget
- ✓ Managements areas
- ✓ Sustainability goals
- ✓ Description of undesirable results
- ✓ Measurable objectives
- ✓ Description of monitoring protocols and data management
- ✓ Description of projects to achieve sustainability

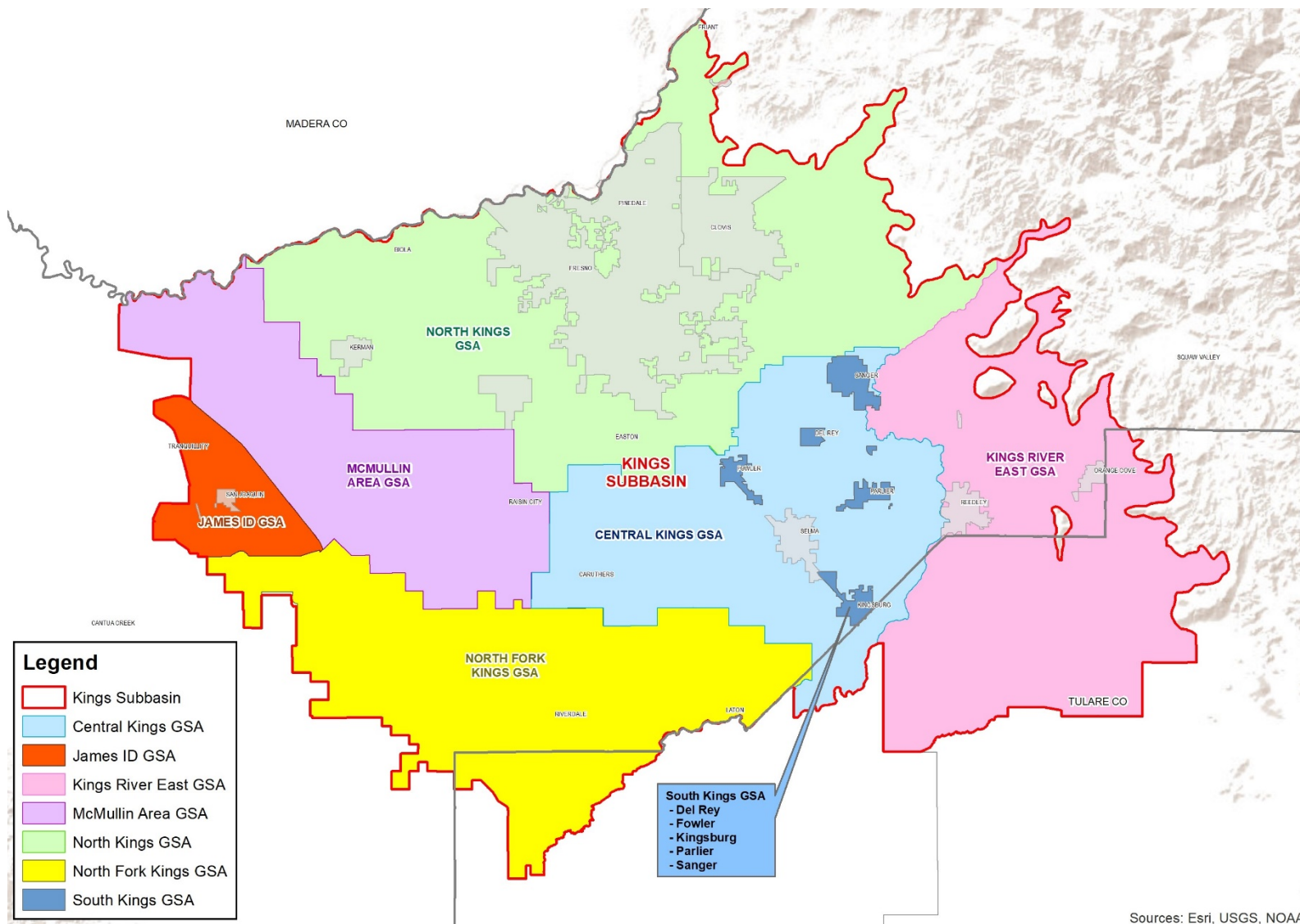
Timeline



Fresno County's Four Subbasins



Kings Subbasin GSAs



Kings Groundwater Subbasin

- Total Acreage: 981,000-acres of which approximately 831,000-acres are located within Fresno County
- Comprised of the following seven GSAs:
 - Central Kings GSA (MOU)
 - James Irrigation District GSA (MOU)
 - **Kings River East GSA** (SAD)
 - **McMullin Area GSA** (JPA)
 - **North Kings GSA** (JPA)
 - **North Fork Kings GSA** (SAD)
 - South Kings GSA

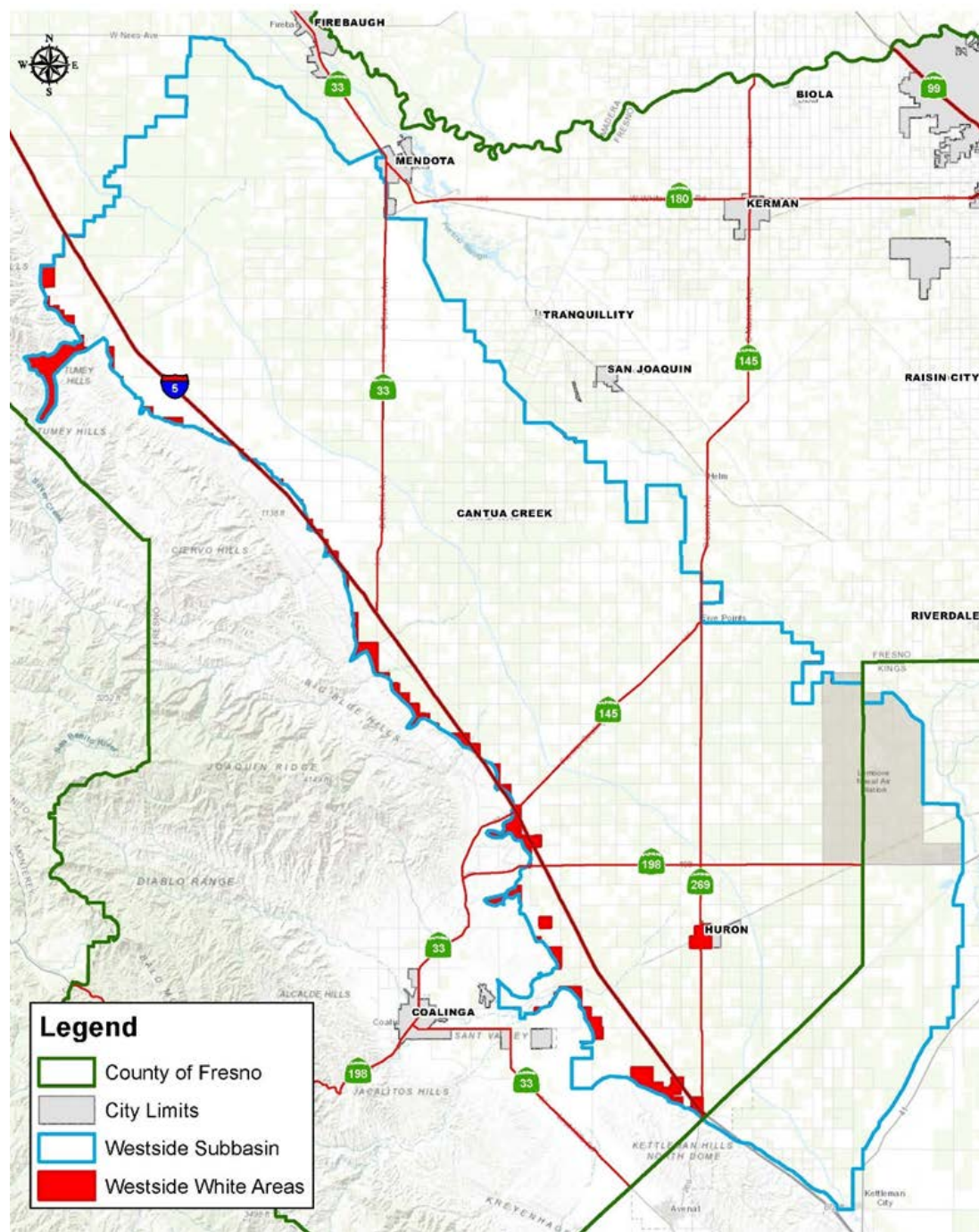
(Bold represents where the County serves as a member agency)
- Each GSA is working independently to prepare a GSP which will be coordinated and submitted together with a required coordination agreement

Kings Subbasin Key Issues

- Halt the overdraft and chronic lowering of groundwater levels;
- Planning and construction of necessary infrastructure for water storage, distribution and recharge;
- Identification and acquisition of additional surface water supplies;
- Expansion of groundwater monitoring networks to fill data gaps; and,
- Completion of required coordination agreement between the GSAs.



Westside Groundwater Subbasin



Westside Groundwater Basin

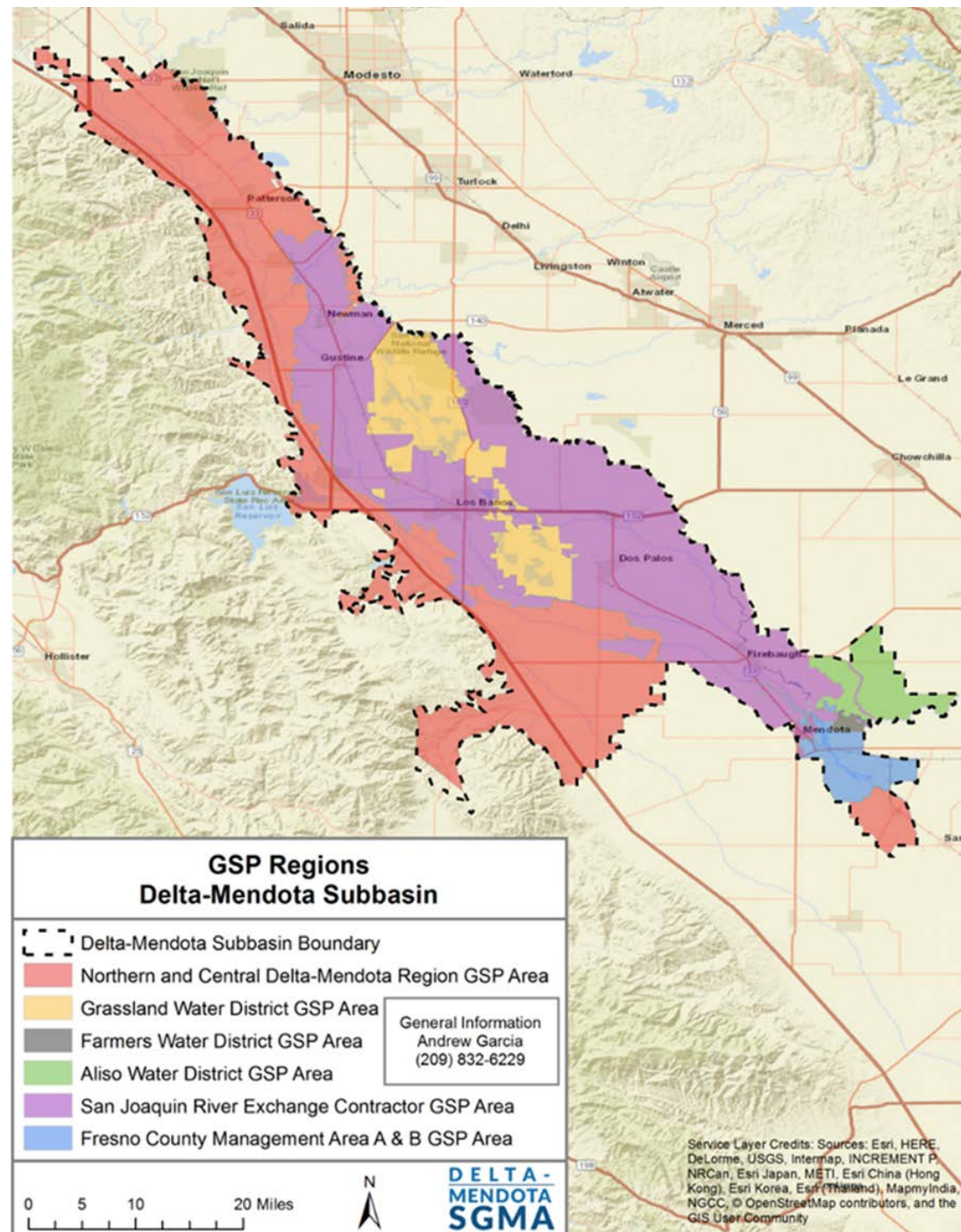
- Total Acreage: 622,000-acres of which 540,000-acrea are located within Fresno County, remainder in Kings County.
- Comprised of two GSAs:
 - **Fresno County**, which serves as the Exclusive GSA for the City of Huron and the unmanaged areas located outside of the Westlands Water District boundary, comprising approximately 10,183-acres.
 - **Westlands Water District**, comprised of the remaining 529,817-acres.
- Each GSA is working cooperatively on the preparation of a single GSP.

Westside Groundwater Basin Key Issues

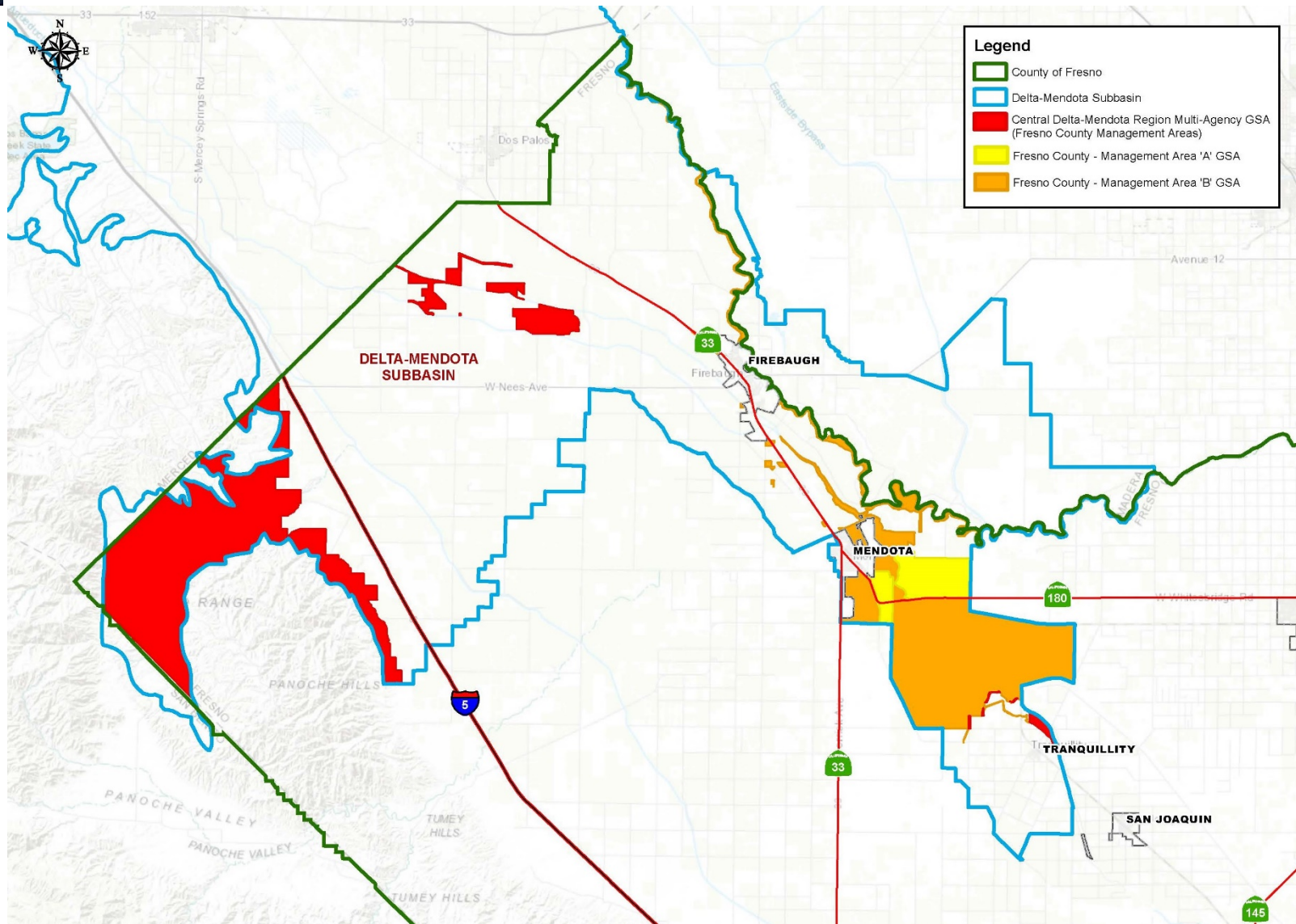
- Halt overdraft and chronic lowering of groundwater levels;
and,
- Address subsidence within the Subbasin.

Delta Mendota Subbasin

Delta-Mendota Subbasin



Delta-Mendota Subbasin within Fresno County

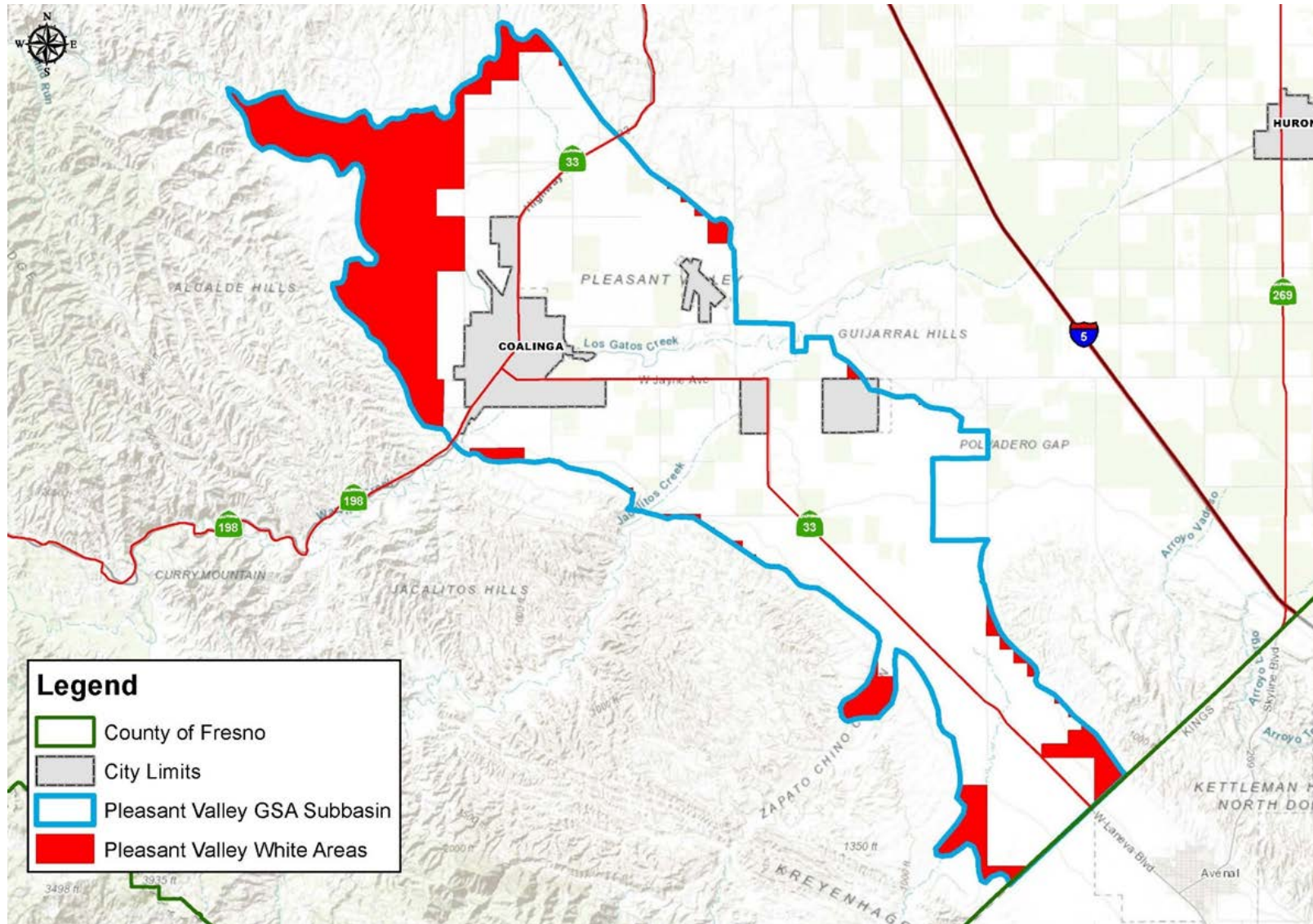


Delta-Mendota Subbasin

- Total Acreage: 747,000-acres of which 215,680 are located within Fresno County. Remaining acreage is within Madera, Merced, and Stanislaus Counties.
- Comprised of 23 GSAs, two of which Fresno County serves as the Exclusive GSA, and one within which the County is a participating agency through an Memorandum of Agreement.
- GSAs have been organized for the preparation of six GSPs which will be coordinated and submitted together with a required coordination agreement.

Delta-Mendota Subbasin Key Issues

- Halt overdraft and chronic lowering of groundwater levels;
- Mitigation of subsidence along the Delta-Mendota Canal;
- Acquisition of additional surface water supplies; and,
- Expansion of groundwater monitoring networks to fill data gaps.



Pleasant Valley Groundwater Subbasin

- Total Acreage: 48,000-acres of which approximately 9,300-acres will be managed by Fresno County under the proposed GSA.
- Once filed, the Subbasin will be comprised of three GSAs: the County of Fresno, the City of Coalinga, and the Pleasant Valley Water District.
- Expected that the three GSAs will work cooperatively on the preparation of a single GSP for the Subbasin.
- Key issues facing the subbasin have not yet been fully explored, but it is anticipated that the focus will be on halting overdraft and the chronic lowering of groundwater levels.
- GSP for Subbasin due January 31, 2024.

Focus of Staff Activity

- Assist in the completion and review of the various GSPs where the County is partner agency with other local agencies.
- Complete preparation of Fresno County Management Area A and B GSP where the County is the Exclusive GSA.
- Participate to complete the required coordination agreements.
- Conduct and/or participate in public outreach meetings to solicit and receive public comments on the various draft GSPs.
- Conduct and/or participate in all required public hearings before the various GSA Boards and your Board as part of the GSP adoption process.
- Partner with local agencies to assist in GSP implementation.
- Evaluate and recommend revisions as necessary to County General Plan policies, ordinances, and development standards to address consistency with adopted GSPs.
- Continue to monitor and participate in the State legislative process to leverage SGMA implementation resource assistance and funding.