

EXHIBIT A

ANNEXATION MAP NO. 10A OF COMMUNITY FACILITIES DISTRICT NO. 2006-01 (POLICE PROTECTION SERVICES), COUNTY OF FRESNO, STATE OF CALIFORNIA

IN THE COUNTY OF FRESNO, STATE OF CALIFORNIA

SITE #1

I HEREBY CERTIFY THAT THE WITHIN MAP SHOWS BOUNDARIES OF ANNEXATION NO. 10A OF COMMUNITY FACILITIES DISTRICT NO. 2006-01 (POLICE PROTECTION SERVICES), COUNTY OF FRESNO, STATE OF CALIFORNIA WAS APPROVED BY THE BOARD OF SUPERVISORS OF THE COUNTY OF FRESNO AT A REGULAR MEETING THEREOF HELD ON THE 24TH DAY OF APRIL, 2019 BY ITS RESOLUTION NO. 15-153.

FILED IN THE OFFICE OF THE CLERK TO THE BOARD OF SUPERVISORS THE 24TH DAY OF APRIL, 2019.

David Campbell, Deputy
CLERK TO THE BOARD OF SUPERVISORS
OF THE COUNTY OF FRESNO

FILED THE 29TH DAY OF APRIL, 2019, AT THE HOUR OF 3:47 O'CLOCK P.M. IN BOOK 45, AT PAGE(S) 58
MAPS OF ASSOCIATION AND COMMUNITY FACILITIES DISTRICTS AND AS ATTACHED NO. 10A-2006-01 IN THE OFFICE OF THE COUNTY RECORDER IN THE COUNTY OF FRESNO, STATE OF CALIFORNIA.
EXEMPT FROM SGL FEES PER
6C-27308.1(c)(3)

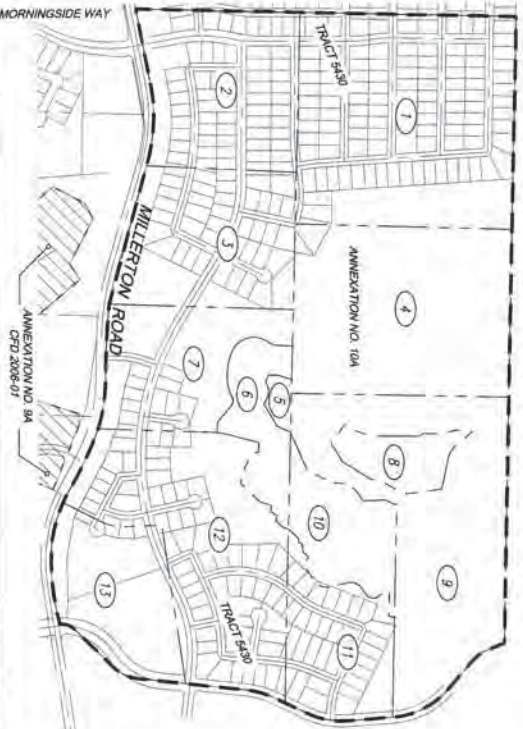
FILED, DEPOS, CDA
COUNTY ASSessor-RECORDER
OF THE COUNTY OF FRESNO

BY: *David Campbell*
DEPUTY RECORDER
COUNTY OF FRESNO

THE LINES AND BOUNDARIES OF EACH LOT OR PARCEL SHOWN IN THIS DRAWING SHALL BE THOSE LINES AND BOUNDARIES AS SHOWN ON THE FRESNO COUNTY ASSessor'S MAP FOR THOSE PARCELS LISTED IN THE FRESNO COUNTY ASSessor'S MAP SHALL BECOME THE LINES AND BOUNDARIES OF SUCH LOTS AND PARCELS.

THE BOARD OF SUPERVISORS OF THE COUNTY OF FRESNO APPROVED THE ORIGINAL DRAWING MAP OF THE DISTRICT, ENTITLED "MAP OF PROPOSED BOUNDARIES OF COMMUNITY FACILITIES DISTRICT NO. 2006-01 (POLICE PROTECTION SERVICES), COUNTY OF FRESNO, STATE OF CALIFORNIA", WHICH WAS FILED PURSUANT TO SECTION 21111 OF THE CALIFORNIA STATUTES AND REVENUE CODE, ON APRIL 1, 2006, IN BOOK 41, AT PAGE(S) 80 AND 81 OF MAPS OF ASSOCIATION AND COMMUNITY FACILITIES DISTRICTS, IN THE OFFICE OF THE COUNTY RECORDER OF THE COUNTY OF FRESNO, STATE OF CALIFORNIA, AS INSTRUMENT NO. 200600894X.

ASSET	ASSESSOR'S PARCEL NO.	SITE NO.	TRACT MAP NO.
1	200-02-125	1	540
2	200-540-015	1	540
3	200-540-015	1	540
4	200-02-475	1	540
5	200-540-185	1	-
6	200-540-385	1	-
7	200-540-385	1	540
8	200-02-055	1	-
9	200-02-055	1	540
10	200-02-055	1	540
11	200-02-055	1	540
12	200-540-075	1	540
13	200-540-085	1	540



COLLECT	DESCRIPTION
1	ASSESSMENT NUMBER
	LOT LINES
	CENTER LINE
	APN LINES
	PROPOSED ANNEXATION TO CTD NO. 2006-01
	EXISTING CTD NO. 2006-01



VICINITY MAP
NOT TO SCALE

PRECISION
CIVIL ENGINEERING, INC.
PLANNING • SURVEYING • CIVIL ENGINEERING
1534 O STREET, FRESNO, CALIFORNIA 93721
TEL: 559-449-4500 FAX: 559-449-4515
WWW.PRECISIONENG.NET

PROJECT TITLE:
MILLERTON SPECIFIC PLAN
SHEET DESCRIPTION:
ANNEXATION MAP NO. 10A SITE 1
CITY OF:
COUNTY OF:
FRESNO

PREPARED FOR:
ASSEMI GROUP
FRESNO, CA 93711
1396 W. HERDON SUITE 110
(559) 440-8308

DESIGNED BY:
RA
CHECKED BY:
DY
DATE:
3/29/19

SHEET NUMBER:
1 OF 15
JOB NUMBER:
19-046

EXHIBIT A

ANNEXATION MAP NO. 10A OF COMMUNITY FACILITIES DISTRICT NO. 2006-01 (POLICE PROTECTION SERVICES), COUNTY OF FRESNO, STATE OF CALIFORNIA

IN THE COUNTY OF FRESNO, STATE OF CALIFORNIA

SITE #2

I, HERBERT C. CROFT, COUNTY CLERK OF THE COUNTY OF FRESNO, DO HEREBY CERTIFY THAT THE WITHIN MAP SHOWING BOUNDARIES OF ANNEXATION NO. 10A OF COMMUNITY FACILITIES DISTRICT NO. 2006-01 (POLICE PROTECTION SERVICES), COUNTY OF FRESNO, STATE OF CALIFORNIA WAS APPROVED BY THE BOARD OF SUPERVISORS OF THE COUNTY OF FRESNO AT A REGULAR MEETING THEREOF HELD ON THE 25TH DAY OF APRIL 2019 BY ITS RESOLUTION NO. 15-138.

FILED IN THE OFFICE OF THE CLERK TO THE BOARD OF SUPERVISORS THIS 25TH DAY OF APRIL 2019.

Herbert C. Croft
COUNTY CLERK

THE MAP WAS FILED FOR RECORD IN THE OFFICE OF THE COUNTY RECORDER IN THE COUNTY OF FRESNO, STATE OF CALIFORNIA, ON APRIL 25, 2019, AT THE HOUR OF 3:47, CLOUTIER P. M. IN BOOK 445, PAGE 59.

EXEMPT FROM 582 FEES PER

CC 87588.1(c)(6)

FULL DUTY, ON
COUNTY ASSESSOR-RECORDER
OF THE COUNTY OF FRESNO

BY: *Angela Williams*
COUNTY RECORDER

THE LINES AND DIMENSIONS OF EACH LOT OR PARCEL SHOWN IN THIS MAP SHALL BE THOSE LINES AND DIMENSIONS AS SHOWN ON THE FRESNO COUNTY ASSESSOR'S MAP FOR THOSE PARCELS LISTED.

THE FRESNO COUNTY ASSESSOR'S MAP SHALL CONTAIN FOR ALL LOTS CONCERNING THE LINES AND DIMENSIONS OF EACH LOT AND PARCELS.

OBJECT	DESCRIPTION
1	ASSESSMENT NUMBER
	LOT LINES
	EDGE OF RIGHT-OF-WAY
	CENTER LINE
	APN LINES
	PROPOSED ANNEXATION TO CDD NO. 2006-01
	EXISTING CDD NO. 2006-01

ASSMT.	ASSESSOR'S PARCEL NO.	SITE NO.	TRACT MAP NO.
1	300-01-225	2	5430



VICINITY MAP
NOT TO SCALE

PRECISION
CIVIL ENGINEERING, INC.
PLANNING • SURVEYING • CIVIL ENGINEERING
1334 O STREET, FRESNO, CALIFORNIA 93721
TEL: 559-449-4500 FAX: 559-449-4515
WWW.PRECISIONENG.NET

PROJECT TITLE:
MILLERTON SPECIFIC PLAN
SHEET DESCRIPTION:
ANNEXATION MAP NO. 10A SITE 2
CITY OF:
COUNTY OF:
FRESNO

PREPARED FOR:
ASSEMI GROUP
FRESNO, CA 93711
1396 W. HERDON SUITE 110
(559) 440-8308

DESIGNED BY: RJA
CHECKED BY: DTY
DATE: 3/29/19

SHEET NUMBER:
1 OF 15
JOB NUMBER:
19-046

EXHIBIT A

ANNEXATION MAP NO. 10A OF COMMUNITY FACILITIES DISTRICT NO. 2006-01 (POLICE PROTECTION SERVICES), COUNTY OF FRESNO, STATE OF CALIFORNIA IN THE COUNTY OF FRESNO, STATE OF CALIFORNIA

SITE #3

I HEREBY CERTIFY THAT THE WITHIN MAP SHOWING BOUNDARIES OF ANNEXATION NO. 10A OF COMMUNITY FACILITIES DISTRICT NO. 2006-01 (POLICE PROTECTION SERVICES), COUNTY OF FRESNO, STATE OF CALIFORNIA WAS APPROVED BY THE BOARD OF SUPERVISORS OF THE COUNTY OF FRESNO AT A REGULAR MEETING HEREBY HELD ON THE 28TH DAY OF April 2019 BY ITS RESOLUTION NO. 15-182.

FILED IN THE OFFICE OF THE CLERK TO THE BOARD OF SUPERVISORS THE 22ND DAY OF April, 2019.

Debi Smith, Deputy
CLERK TO THE BOARD OF SUPERVISORS
OF THE COUNTY OF FRESNO

FILED THE 27TH DAY OF April, 2019, AT THE HOUR OF 3:47 O'CLOCK P.M. IN BOOK 445, AT PAGE(S) 60.
MAPS OF ASSIGNMENT AND COMMUNITY FACILITIES DISTRICTS AND AS INSTRUMENT NO. 2019-0045390 IN THE OFFICE OF THE COUNTY RECORDER IN THE COUNTY OF FRESNO, STATE OF CALIFORNIA.
EXEMPT FROM SBL FEES PER
CC 27388.1(2)(C)

FILED BY: JON
COUNTY ASSessor-RECORDER
OF THE COUNTY OF FRESNO

BY: *Wesley Sullivan* FRESNO COUNTY RECORDER
DEPUTY RECORDER

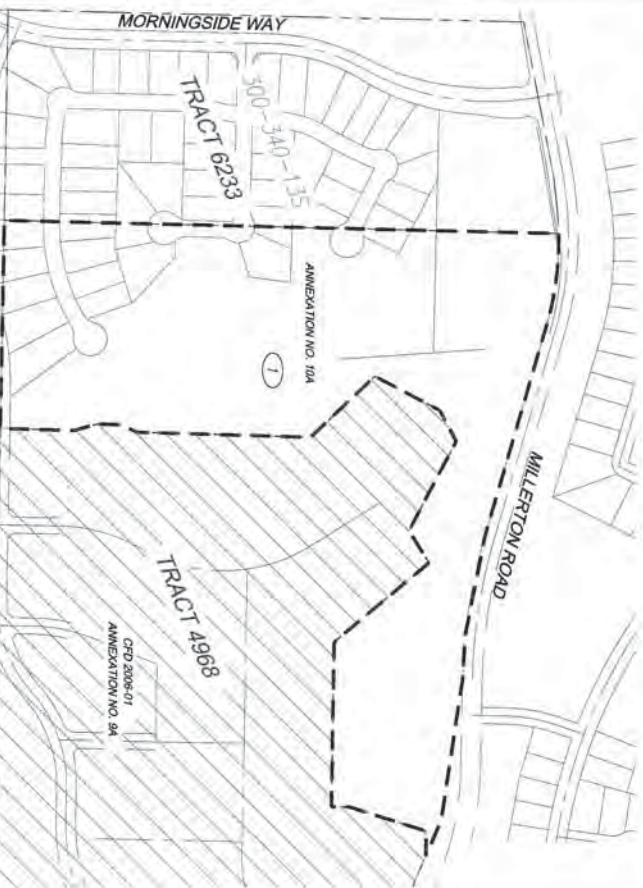
THE LINES AND PARCELS OF EACH LOT OR PARCEL SHOWN IN THIS MAP SHALL BE THOSE LINES AND PARCELS AS SHOWN ON THE FRESNO COUNTY ASSessor'S MAP FOR THOSE PARCELS LISTED.

THE FRESNO COUNTY ASSessor'S MAP SHALL GOVERN FOR ALL OTHERS CONCERNING THE LINES AND PARCELS OF SUCH LOTS AND PARCELS.

THE BOARD OF SUPERVISORS OF THE COUNTY OF FRESNO APPROVED THE ORIGINAL BOUNDARY MAP OF THE DISTRICT, ENTITLED "MAP OF PROPOSED BOUNDARIES OF COMMUNITY FACILITIES DISTRICT NO. 2006-01 (POLICE PROTECTION SERVICES), COUNTY OF FRESNO, STATE OF CALIFORNIA", WHICH WAS FILED PURSUANT TO SECTION 3111 OF THE CALIFORNIA STATUTES AND HIGGINS CODE, ON APRIL 1, 2006, IN BOOK 44, AT PAGE(S) 80 AND 81 OF MAPS OF ASSIGNMENT AND COMMUNITY FACILITIES DISTRICTS, IN THE OFFICE OF THE COUNTY RECORDER OF THE COUNTY OF FRESNO, STATE OF CALIFORNIA, AS INSTRUMENT NO. 200600894X.

LEGEND	
OBJECT	DESCRIPTION
①	ASSIGNMENT NUMBER
---	LOT LINES
---	CENTER LINE
---	APN LIMITS
---	PROPOSED ANNEXATION TO CFB NO. 2006-01
---	EXISTING CFB NO. 2006-01

ASSIGN	ASSIGNMENT PARCEL NO.	SITE NO.	TRACT MAP NO.
1	200-440-405	3	



VICINITY MAP

NOT TO SCALE

PRECISION
CIVIL ENGINEERING, INC.
PLANNING • SURVEYING • CIVIL ENGINEERING
1234 O STREET, FRESNO, CALIFORNIA 93721
TEL: 559-449-4500 FAX: 559-449-4515
WWW.PRECISIONENG.NET

PROJECT TITLE:
MILLERTON SPECIFIC PLAN
SHEET DESCRIPTION:
ANNEXATION MAP NO. 10A SITE 3
CITY OF:
COUNTY OF:
FRESNO

PREPARED FOR:
ASSEMI GROUP
FRESNO, CA 93711
1396 W. HERDON SUITE 110
(559) 440-8308

REVISIONS:
DRAWN BY: RA
CHECKED BY: DY
DATE: 3/29/19

SHEET NUMBER:
1 OF 145
JOB NUMBER:
19-045

EXHIBIT A

ANNEXATION MAP NO. 10A OF COMMUNITY FACILITIES DISTRICT NO. 2006-01 (POLICE PROTECTION SERVICES), COUNTY OF FRESNO, STATE OF CALIFORNIA

IN THE COUNTY OF FRESNO, STATE OF CALIFORNIA

SITE #4

I HEREBY CERTIFY THAT THE MAP SHOWING BOUNDARIES OF ANNEXATION NO. 10A OF COMMUNITY FACILITIES DISTRICT NO. 2006-01 (POLICE PROTECTION SERVICES), COUNTY OF FRESNO, STATE OF CALIFORNIA WAS APPROVED BY THE BOARD OF SUPERVISORS OF THE COUNTY OF FRESNO AT A REGULAR MEETING THEREOF HELD ON THE 28TH DAY OF APRIL, 2018 BY ITS RESOLUTION NO. 18-352.

FILED IN THE OFFICE OF THE CLERK TO THE BOARD OF SUPERVISORS THIS 12TH DAY OF APRIL, 2018.

David Smith, Deputy
CLERK TO THE BOARD OF SUPERVISORS
OF THE COUNTY OF FRESNO

THIS MAP WAS PREPARED BY THE CLERK OF THE BOARD OF SUPERVISORS OF THE COUNTY OF FRESNO, STATE OF CALIFORNIA, AND IS NOT A PROFESSIONAL ENGINEERING DRAWING. IT IS THE PROPERTY OF THE COUNTY OF FRESNO AND IS NOT TO BE REPRODUCED OR USED FOR ANY OTHER PURPOSE WITHOUT THE WRITTEN PERMISSION OF THE COUNTY OF FRESNO.

PAUL DUTCH, CHAIR
COUNTY ASSessor-RECORDS
OF THE COUNTY OF FRESNO

BY: *Angela Billings*
IDENTITY RECORDED
COUNTY ASSessor-RECORDS
OF THE COUNTY OF FRESNO

THE LINES AND DIMENSIONS OF EACH LOT OR PARCEL SHOWN IN THIS DRAWING SHALL BE THOSE LINES AND DIMENSIONS AS SHOWN ON THE FRESNO COUNTY ASSessor'S MAP FOR THOSE PARCELS LISTED

THE FRESNO COUNTY ASSessor'S MAP SHALL GOVERN FOR ALL DEEDS CONCERNING THE LINES AND DIMENSIONS OF SUCH LOTS AND PARCELS.

THE BOARD OF SUPERVISORS OF THE COUNTY OF FRESNO APPROVED THE ORIGINAL ANNEXATION MAP OF THE DISTRICT, ENTITLED "Map of PROPOSED BOUNDARIES OF COMMUNITY FACILITIES DISTRICT NO. 2006-01 (POLICE PROTECTION SERVICES), COUNTY OF FRESNO, STATE OF CALIFORNIA", WHICH WAS FILED PURSUANT TO SECTION 3111 OF THE CALIFORNIA STREETS AND HIGHWAYS CODE, ON APRIL 1, 2006, IN BOOK 41, AT PAGE(S) 80 AND 81 OF MAPS OF ASSessorMENT AND COMMUNITY FACILITIES DISTRICTS, IN THE OFFICE OF THE COUNTY RECORDER OF THE COUNTY OF FRESNO, STATE OF CALIFORNIA, AS INSTRUMENT NO. 200600594X.

LEGEND	
OBJECT	DESCRIPTION
1	ASSessorMENT NUMBER
	LOT LINES
	EXISTING LINES
	NEW LINES
	PROPOSED ANNEXATION TO DISTRICT NO. 2006-01
	EXISTING DISTRICT NO. 2006-01

ASSIGN	ASSessorMENT PARCEL NO.	SITE NO.	PROJECT MAP NO.
1	300-342-51	4	-



VICINITY MAP
NOT TO SCALE

EXHIBIT A

ANNEXATION MAP NO. 10A OF COMMUNITY FACILITIES DISTRICT NO. 2006-01 (POLICE PROTECTION SERVICES), COUNTY OF FRESNO, STATE OF CALIFORNIA

IN THE COUNTY OF FRESNO, STATE OF CALIFORNIA

SITE #5

I, JERRY CERRY, THE WRITER AND SAVING BOARDERS OF ANNEXATION NO. 10A OF COMMUNITY FACILITIES DISTRICT NO. 2006-01 (POLICE PROTECTION SERVICES), COUNTY OF FRESNO, STATE OF CALIFORNIA HAS APPROVED BY THE BOARD OF SUPERVISORS OF THE COUNTY OF FRESNO AT A REGULAR MEETING THEREIN HELD ON THE 23RD DAY OF April, 2013 BY ITS RESOLUTION NO. R-103.

FILED IN THE OFFICE OF THE CLERK TO THE BOARD OF SUPERVISORS THIS 23RD DAY OF April, 2013.

Shirley Long
CLERK TO THE BOARD OF SUPERVISORS
OF THE COUNTY OF FRESNO

FILE THIS 28TH OF April, 2013, AT THE HOUR OF 3:47 O'CLOCK P.M. IN BOOK 45, AT PAGE 62.
EXEMPT FROM \$62 FEES PER
GC 273881(2)(c)

FILED IN THE OFFICE OF THE CLERK TO THE BOARD OF SUPERVISORS
OF THE COUNTY OF FRESNO

By *Angela Bell*
COUNTY RECORDER

THE LINES AND DIMENSIONS OF EACH LOT OR PARCEL SHOWN IN THIS MAP SHALL BE THOSE LINES AND DIMENSIONS AS SHOWN ON THE FRESNO COUNTY ASSessor's MAP FOR THOSE PARCELS LISTED.

THE FRESNO COUNTY ASSessor's MAP SHALL CONTAIN THE LINES AND DIMENSIONS OF SUCH LOTS AND PARCELS.

LEGEND	
OBJECT	DESCRIPTION
①	ASSIGNMENT NUMBER
	LOT LINES
	CENTER LINE
	ADJ. LINES
	PROPOSED ANNEXATION TO DIST. NO. 2006-01
	EXISTING DIST. NO. 2006-01

ASST.	ASSIGNMENT NUMBER	SITE NO.	TRACT MAP NO.
1	200-340-15	5	623
2	200-342-20	5	4978



VICINITY MAP

NOT TO SCALE

PRECISION
CIVIL ENGINEERING, INC.
PLANNING • SURVEYING • CIVIL ENGINEERING
1234 O STREET, FRESNO, CALIFORNIA 93721
TEL: 559-449-4500 FAX: 559-449-4515
WWW.PRECISIONENG.NET

PROJECT TITLE:
MILLERTON SPECIFIC PLAN
SHEET DESCRIPTION:
ANNEXATION MAP NO. 10A SITE 5
CITY OF:
COUNTY OF:
FRESNO

PREPARED FOR:
ASSEM GROUP
FRESNO, CA 93711
1396 W. HERDON SUITE 110
(559) 440-8308

DESIGNED BY:
RA
CHECKED BY:
DY
DATE:
3/29/13

SHEET NUMBER:
1 OF 14
JOB NUMBER:
10406

EXHIBIT A

ANNEXATION MAP NO. 10A OF COMMUNITY FACILITIES DISTRICT NO. 2006-01 (POLICE PROTECTION SERVICES), COUNTY OF FRESNO, STATE OF CALIFORNIA IN THE COUNTY OF FRESNO, STATE OF CALIFORNIA

SITE #6

I, HERBERT COUNTY, and the within and bearing boundaries of ANNEXATION NO. 10A OF COMMUNITY FACILITIES DISTRICT NO. 2006-01 (POLICE PROTECTION SERVICES), COUNTY OF FRESNO, STATE OF CALIFORNIA, WAS APPROVED BY THE BOARD OF SUPERVISORS OF THE COUNTY OF FRESNO AT A REGULAR MEETING HELD ON THE 20TH DAY OF APRIL, 2019 BY ITS RESOLUTION NO. 15-183.

FILED IN THE OFFICE OF THE CLERK TO THE BOARD OF SUPERVISORS THE 22ND DAY OF APRIL, 2019.

Donna Lynn Smith
CLERK TO THE BOARD OF SUPERVISORS
OF THE COUNTY OF FRESNO

FILED THIS 24TH DAY OF APRIL, 2019, AT THE HOUR OF 3:47, JUDITH E. M. N. BOOK 45, AT PAGE 63.
WAS OF ASSessor AND COMMUNITY FACILITIES DISTRICT NO. 2006-01 IN THE OFFICE OF THE COUNTY RECORDER IN THE COUNTY OF FRESNO, STATE OF CALIFORNIA.
EXEMPT FROM S&L FEES PER
GC 27388.1(2)(c)

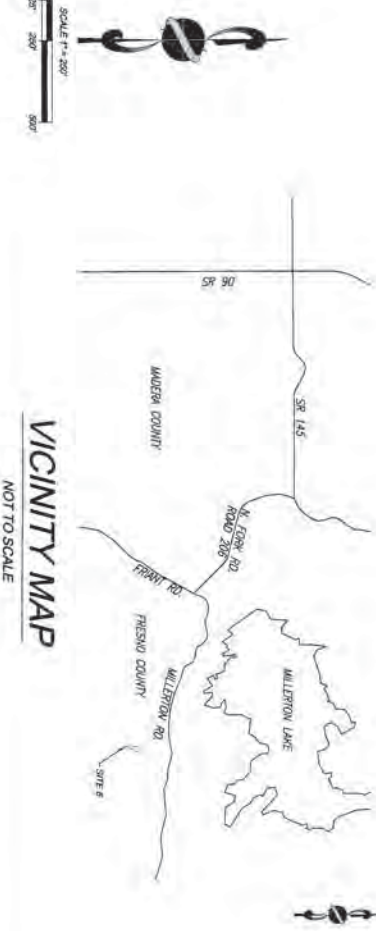
Angela Williams
COUNTY RECORDER
OF THE COUNTY OF FRESNO

THE LOTS AND PARCELS OF LAND SHOWN IN THIS MAP SHALL BE THOSE LOTS AND PARCELS AS SHOWN ON THE FRESNO COUNTY ASSESSOR'S MAP FOR THOSE PARCELS LISTED.

THE BOARD OF SUPERVISORS OF THE COUNTY OF FRESNO APPROVED THE OUTLINE BOUNDARY MAP OF THE DISTRICT, ENTITLED MAP OF PROPOSED BOUNDARIES OF COMMUNITY FACILITIES DISTRICT NO. 2006-01 (POLICE PROTECTION SERVICES), COUNTY OF FRESNO, STATE OF CALIFORNIA, WHICH WAS FILED PURSUANT TO SECTION 5111 OF THE CALIFORNIA STRAITS AND RECORDS CODE, ON JAN. 1, 2006, IN BOOK 41, AT PAGE 87 AND AT OF MAPS OF ASSessor AND COMMUNITY FACILITIES DISTRICTS, IN THE OFFICE OF THE COUNTY RECORDER OF THE COUNTY OF FRESNO, STATE OF CALIFORNIA, AS INSTRUMENT NO. 2006008945.

LEGEND	
OBJECT	DESCRIPTION
	ASSASSOR NUMBER
	LOT LINES
	CENTER LINE
	APN LINES
	PROPOSED ANNEXATION TO DIST. NO. 2006-01
	EXISTING DIST. NO. 2006-01

ASSASSOR	ASSASSOR'S PARCEL NO.	SITE NO.	TRACT MAP NO.
1	200-542-03	6	-



VICINITY MAP
NOT TO SCALE

SHEET NUMBER: 1 OF 15 JOB NUMBER: 19-046		PREPARED FOR: ASSEMI GROUP FRESNO, CA 93711 1396 W. HERDON SUITE 110 (559) 440-8308		PROJECT TITLE: MILLERTON SPECIFIC PLAN SHEET DESCRIPTION: ANNEXATION MAP NO. 10A SITE 6 CITY OF: COUNTY OF: FRESNO		PRECISION CIVIL ENGINEERING, INC. PLANNING • SURVEYING • CIVIL ENGINEERING 1234 O STREET, FRESNO, CALIFORNIA 93721 TEL: 559-449-4500 FAX: 559-449-4515 WWW.PRECISIONENG.NET	
DRAWN BY: RA CHECKED BY: DTY DATE: 3/28/19		REVISIONS:					

ANNEXATION MAP NO. 10A OF COMMUNITY FACILITIES DISTRICT NO. 2006-01
(POLICE PROTECTION SERVICES), COUNTY OF FRESNO, STATE OF CALIFORNIA

SITE #7

Shirley C. Deputy
CLERK TO THE BOARD OF SUPERVISORS
OF THE COUNTY OF FRESNO

PAUL DACTOS, CPA
COUNTY ASSESSOR-RETIREMENT
OF THE COUNTY OF FRESNO

DEPUTY DIRECTOR

THE FRESNO COUNTY ASSESSOR'S MAP SHALL GOVERN FOR ALL DETAIL CONCERNING THE LINES AND DIMENSIONS OF SUCH LOTS AND PARCELS.

AND COMMUNITY FACILITIES DISTRICTS, IN THE OFFICE OF THE COUNTY RECORDER OF THE COUNTY OF FRESNO, STATE OF CALIFORNIA, AS INSTRUMENT NO. 2006006934.



ASSMT.	ASSESSOR'S PARCEL NO.	SITE NO.	TRACT MAP NO.
1	30-542-105	7	6189
2	30-542-115	7	6189

NOT TO SCALE

ANNEXATION MAP NO. 10A OF COMMUNITY FACILITIES DISTRICT NO. 2006-01
(POLICE PROTECTION SERVICES), COUNTY OF FRESNO, STATE OF CALIFORNIA
IN THE COUNTY OF FRESNO, STATE OF CALIFORNIA

1. I HEREBY CERTIFY THAT THE MINOR AND SERVING MEMBERS OF ANCHORAGE NO. 104 OF COUNTY OF ALASKA DISTRICT NO. 2004-01 (POLICE PROTECTION SERVICES, COUNTY OF ALASKA, STATE OF CALIFORNIA WAS APPROVED BY THE BOARD OF SUPERVISORS OF THE COUNTY OF ALASKA AT A REGULAR MEETING THEREOF HELD ON THE 25th DAY OF April, 2019 BY ITS RESOLUTION NO. 18-182.

2. I, THE CLERK OF THE COURT OF THE COUNTY OF SUPERVISORS THE 25th DAY OF April, 2019.

FILE THE 26th April, 2019, AT THE HOUR OF 3:47 O'CLOCK P.M. IN ROOM 445 AT PARISH 65
 MAPS OF ASSIGNMENT AND COGNATEY AGAINST DOMESTICS AND AS INSTRUMENT NO 2019-00458198 IN THE OFFICE OF THE COUNTY RECORDER IN THE COUNTY OF PEARSON, STATE OF CALIFORNIA
EXEMPT FROM SGL FEES PER
 GC 27388.1(2)(c)
 FILE DUTIES CMA
 COUNTY ASSIGNOR-RECORDER
 OF THE COUNTY OF PEARSON

THE LINES AND DIMENSIONS OF EACH LOT OR PARCEL SHOWN IN THIS MAP/PLAN SHALL BE THOSE LINES AND DIMENSIONS AS SHOWN ON THE PRELIMINARY PLAT/ASSASSON'S MAP FOR THOSE PARCELS LISTED.

THE BOARD OF SUPERVISORS OF THE COUNTY OF FRESNO APPROVED THE GENERAL BUDGETARY MAP OF THE DISTRICT, ENTITLED MAP OF PROPOSED BOUNDARIES OF COUNTY FACILITIES DISTRICT NO. 2008-01 (PUBLIC PROTECTION SERVICES), COUNTY OF FRESNO, STATE OF CALIFORNIA, TO SECTION 3111 OF THE CALIFORNIA STREETS AND HIGHWAYS CODE, ON APRIL 3, 2008, IN ROOM 41, 47 FRESNO ST. AND 61 OF 4455 OF KASSIDIAN AND COUNTY FACILITIES DISTRICTS, IN THE OFFICE OF THE COUNTY RECORDER OF THE COUNTY OF FRESNO, STATE OF CALIFORNIA, AS INSTRUMENT NO. 2008088544.

ASSIST	ASSESSOR'S PARCEL NO.	SITE NO.	TRACT MAP NO.
1	300-542-12	8	6226



NOT TO SCALE

SHEET NUMBER: 1 OF 45 JOB NUMBER: 19-046		DATE: 3/28/19	DRAWN BY: DA	CHECKED BY: DY	REVISIONS:	PREPARED FOR:	PROJECT TITLE:	 PLANNING • SURVEYING • CIVIL ENGINEERING 1234 O STREET, FRESNO, CALIFORNIA 93731 TEL: 559-449-4500 FAX: 559-449-4515 WWW.PRECISIONENG.NET
						ASSEMI GROUP FRESNO, CA 93711 1396 W. HERDON SUITE 110 (559) 440-8308	MILLERTON SPECIFIC PLAN SHEET DESCRIPTION: ANNEXATION MAP NO. 10A SITE 8 CITY OF: COUNTY OF: FRESNO	

EXHIBIT A

ANNEXATION MAP NO. 10A OF COMMUNITY FACILITIES DISTRICT NO. 2006-01 (POLICE PROTECTION SERVICES), COUNTY OF FRESNO, STATE OF CALIFORNIA IN THE COUNTY OF FRESNO, STATE OF CALIFORNIA

SITE #9

I, HEREBY CERTIFY THAT THE WITHIN MAP SHOWING BOUNDARIES OF ANNEXATION NO. 10A OF COMMUNITY FACILITIES DISTRICT NO. 2006-01 (POLICE PROTECTION SERVICES), COUNTY OF FRESNO, STATE OF CALIFORNIA WAS APPROVED BY THE BOARD OF SUPERVISORS OF THE COUNTY OF FRESNO AT A REGULAR MEETING THEREOF HELD ON THE 24TH DAY OF APRIL, 2019 BY ITS RESOLUTION NO. 19-033.

FILED IN THE OFFICE OF THE CLERK TO THE BOARD OF SUPERVISORS THE 24TH DAY OF APRIL, 2019.

Chia-Ling Dapata
CLERK TO THE BOARD OF SUPERVISORS
OF THE COUNTY OF FRESNO

FILE THE 28TH DAY OF APRIL, 2019, AT THE HOUR OF 3:47 O'CLOCK P.M. IN BOOK 456, AT PAGE 616.
MAP OF ASSessor AND COMMUNITY FACILITIES DISTRICT NO. 2006-01 IN THE OFFICE OF THE COUNTY RECORDER IN THE COUNTY OF FRESNO, STATE OF CALIFORNIA.
**EXEMPT FROM S&L FEES PER
GC 27308.1(c)(2)(C)**

BY *Angela Williams* FRESNO COUNTY RECORDER
IDENTITY VERIFIED

THE LINES AND DIMENSIONS OF EACH LOT OR PARCEL SHOWN IN THIS DRAWING SHALL BE THOSE LINES AND DIMENSIONS AS SHOWN ON THE FRESNO COUNTY ASSESSOR'S MAP FOR THESE PARCELS LISTED.

THE FRESNO COUNTY ASSESSOR'S MAP SHALL GOVERN FOR ALL OTHER CONCERNING THE LINES AND DIMENSIONS OF SUCH LOTS AND PARCELS.

TRACT	DESCRIPTION
①	ASSIGNMENT NUMBER
	LOT LINES
	CENTER LINE
	ADJ. LINES
	PROPOSED ANNEXATION C/D NO. 2006-01
	EXISTING C/D NO. 2006-01

ASSIST.	ASSESSOR'S PARCEL NO.	SITE NO.	TRACT MAP NO.
1	300-542-11	9	454



VICINITY MAP
NOT TO SCALE

PREPARED FOR: ASSEMI GROUP FRESNO, CA 93711 1396 W. HERDON SUITE 110 (559) 440-8308		PROJECT TITLE: MILLERTON SPECIFIC PLAN	
SHEET DESCRIPTION: ANNEXATION MAP NO. 10A SITE 9		CITY OF: FRESNO	
REVISIONS: _____ _____ _____		DRAWN BY: RA CHECKED BY: DY DATE: 3/28/19	
SHEET NUMBER: 1 OF 45		K&B NUMBER: 19-046	

PRECISION
CIVIL ENGINEERING, INC.
PLANNING • SURVEYING • CIVIL ENGINEERING
1234 O STREET, FRESNO, CALIFORNIA 93721
TEL: 559-449-4500 FAX: 559-449-4515
WWW.PRECISIONENG.NET

EXHIBIT A

ANNEXATION MAP NO. 10A OF COMMUNITY FACILITIES DISTRICT NO. 2006-01 (POLICE PROTECTION SERVICES), COUNTY OF FRESNO, STATE OF CALIFORNIA

IN THE COUNTY OF FRESNO, STATE OF CALIFORNIA

SITE #10

I, HEREBY CERTIFY THAT THE WITHIN MAP SHOWS BOUNDARIES OF ANNEXATION NO. 10A OF COMMUNITY FACILITIES DISTRICT NO. 2006-01 (POLICE PROTECTION SERVICES) COUNTY OF FRESNO, STATE OF CALIFORNIA WAS APPROVED BY THE BOARD OF SUPERVISORS OF THE COUNTY OF FRESNO AT A REGULAR MEETING THEREOF HELD ON THE 24TH DAY OF APRIL, 2013 BY ITS RESOLUTION NO. R-152.

FILED IN THE OFFICE OF THE CLERK TO THE BOARD OF SUPERVISORS THIS 24TH DAY OF APRIL, 2013.

Debra L. Smith
CLERK TO THE BOARD OF SUPERVISORS
OF THE COUNTY OF FRESNO

THE HAS 24TH APRIL, 2013, AT THE HOUR OF 3:47 O'CLOCK P.M. IN BOOK 455, AT PAGE(S) 627
EXEMPT FROM 582 FEE'S PER
GC 27386.1 (2)(c)

PAUL DICKER, CPA
COUNTY ASSessor-RECORDER
OF THE COUNTY OF FRESNO

BY: *Angela Bullis*
DEPUTY RECORDER

THE LINES AND DIMENSIONS OF EACH LOT OR PARCEL SHOWN IN THIS PARCEL MAP SHALL BE THOSE LINES AND DIMENSIONS AS SHOWN ON THE FRESNO COUNTY ASSessor'S MAP FOR THOSE PARCELS LISTED.

THE FRESNO COUNTY ASSessor'S MAP SHALL GOVERN FOR ALL DEEDS CONCERNING THE LINES AND DIMENSIONS OF EACH LOT AND PARCELS.

THE BOARD OF SUPERVISORS OF THE COUNTY OF FRESNO APPROVED THE ORIGINAL BOUNDARY MAP OF THE DISTRICT, ENTITLED "MAP OF PROPOSED BOUNDARIES OF COMMUNITY FACILITIES DISTRICT NO. 2006-01 (POLICE PROTECTION SERVICES), COUNTY OF FRESNO, STATE OF CALIFORNIA", WHICH WAS FILED PURSUANT TO SECTION 3111 OF THE CALIFORNIA STREETS AND HIGHWAYS CODE, ON APRIL 1, 2006, IN BOOK 41, AT PAGE(S) 80 AND 81 OF MAPS OF ASSessor'S AND COMMUNITY FACILITIES DISTRICTS, IN THE OFFICE OF THE COUNTY RECORDER OF THE COUNTY OF FRESNO, STATE OF CALIFORNIA, AS INSTRUMENT NO. 200600596X.



LEGEND	
OBJECT	DESCRIPTION
①	ASSessor'S NAME
	LOT LINES
	EDGE OF RIGHT-OF-WAY
	CENTER LINE
	APN LINES
	PROPOSED ANNEXATION TO DISTRICT NO. 2006-01
	EXISTING DISTRICT NO. 2006-01

ASSUMT.	ASSessor'S PARCEL NO.	SITE NO.	TRACT MAP NO.
1	300-350-285	10	-



VICINITY MAP

NOT TO SCALE

PRECISION
CIVIL ENGINEERING, INC.
PLANNING • SURVEYING • CIVIL ENGINEERING
1234 O STREET, FRESNO, CALIFORNIA 93721
TEL: 559-449-4500 FAX: 559-449-4515
WWW.PRECISIONENG.NET

PROJECT TITLE:
MILLERTON SPECIFIC PLAN
SHEET DESCRIPTION:
ANNEXATION MAP NO. 10A SITE 10
CITY OF:
COUNTY OF:
FRESNO

PREPARED FOR:
ASSEMI GROUP
FRESNO, CA 93711
1396 W. HERDON SUITE 110
(559) 440-8308

DRAWN BY: RA
CHECKED BY: DY
DATE: 3/29/19

SHEET NUMBER:
140 OF 145
JOB NUMBER:
19-046

EXHIBIT A

ANNEXATION MAP NO. 10A OF COMMUNITY FACILITIES DISTRICT NO. 2006-01 (POLICE PROTECTION SERVICES), COUNTY OF FRESNO, STATE OF CALIFORNIA IN THE COUNTY OF FRESNO, STATE OF CALIFORNIA SITE #11

I HEREBY CERTIFY THAT THE WITHIN MAP SHOWING BOUNDARIES OF ANNEXATION NO. 10A OF COMMUNITY FACILITIES DISTRICT NO. 2006-01 (POLICE PROTECTION SERVICES), COUNTY OF FRESNO, STATE OF CALIFORNIA WAS APPROVED BY THE BOARD OF SUPERVISORS OF THE COUNTY OF FRESNO AT A REGULAR MEETING THEREOF HELD ON THE 24TH DAY OF April, 2019 BY ITS RESOLUTION NO. 19-108.

FILED IN THE OFFICE OF THE CLERK TO THE BOARD OF SUPERVISORS THIS 24TH DAY OF April, 2019.

Don Lutz, Deputy
CLERK TO THE BOARD OF SUPERVISORS
OF THE COUNTY OF FRESNO

THE FIRST OF April, 2019, AT THE HOUR OF 3:47, O'CLOCK P.M. IN BOOK 545, AT PAGE(S) 68,
MAPS OF ASSASSIN AND COMMUNITY FACILITIES DISTRICTS AND AS INCORPORATED IN 2019-0043378 IN THE OFFICE OF THE COUNTY RECORDER IN THE COUNTY OF FRESNO, STATE OF CALIFORNIA,
EXEMPT FROM 562 FRS PER
GC 27388.1(2)(c)

PAUL JONES, CIVIL
COUNTY ASSessor-RECORDER
OF THE COUNTY OF FRESNO

BY: *Angela H. H. H.* FRESNO COUNTY RECORDER
DEPUTY RECORDER

THE LINES AND DIMENSIONS OF EACH LOT OR PARCEL SHOWN IN THIS DRAWING SHALL BE THOSE LINES AND DIMENSIONS AS SHOWN ON THE FRESNO COUNTY ASSessor'S MAP FOR THESE PARCELS LISTED.

THE FRESNO COUNTY ASSessor'S MAP SHALL GOVERN FOR ALL DEEDS CONCERNING THE LINES AND DIMENSIONS OF SUCH LOTS AND PARCELS.

ANNEXATION NO. 24
CFD 2006-01

TRACT	DESCRIPTION
1	ASSASSIN NUMBER
	LOT LINES
	LINE OF RIGHT-OF-WAY
	CENTER LINE
	APN LINES
	PROPOSED ANNEXATION TO CFD NO. 2006-01
	EXISTING CFD NO. 2006-01

ASSANT	ASSASSIN'S PARCELS NO.	SITE NO.	TRACT MAP NO.
1	200-545-556 (PREVIOUS)	11	-



VICINITY MAP
NOT TO SCALE

PRECISION
CIVIL ENGINEERING, INC.
PLANNING • SURVEYING • CIVIL ENGINEERING
1234 O STREET, FRESNO, CALIFORNIA 93721
TEL: 559.449.4560 FAX: 559.449.4515
WWW.PRECISIONENG.NET

PROJECT TITLE:
MILLERTON SPECIFIC PLAN
SHEET DESCRIPTION:
ANNEXATION MAP NO. 10A SITE 11
CITY OF:
COUNTY OF:
FRESNO

PREPARED FOR:
ASSEMI GROUP
FRESNO, CA 93711
1396 W. HERDON SUITE 110
(559) 440-8308

DESIGNED BY: RA
CHECKED BY: DJV
DATE: 3/29/19

SHEET NUMBER:
144 OF 144
JOB NUMBER:
19-046

EXHIBIT A

ANNEXATION MAP NO. 10A OF COMMUNITY FACILITIES DISTRICT NO. 2006-01 (POLICE PROTECTION SERVICES), COUNTY OF FRESNO, STATE OF CALIFORNIA

IN THE COUNTY OF FRESNO, STATE OF CALIFORNIA

SITE #12

I HEREBY CERTIFY THAT THE WITHIN MAP SHOWING BOUNDARIES OF ANNEXATION NO. 10A OF COMMUNITY FACILITIES DISTRICT NO. 2006-01 (POLICE PROTECTION SERVICES), COUNTY OF FRESNO, STATE OF CALIFORNIA WAS APPROVED BY THE BOARD OF SUPERVISORS OF THE COUNTY OF FRESNO AT A REGULAR MEETING THEREOF HELD ON THE 24TH DAY OF APRIL, 2016 BY ITS RESOLUTION NO. 19-02.

FILED IN THE OFFICE OF THE CLERK TO THE BOARD OF SUPERVISORS THIS 25TH DAY OF APRIL, 2016.

David L. Smith, Deputy Clerk
CLERK TO THE BOARD OF SUPERVISORS
OF THE COUNTY OF FRESNO

FILE THIS MAP OF APRIL 2016 AT THE RATE OF \$3.47 PER PAGE (P. 1 & 2 IN BOOK 45, AT PAGES 6-9)
EXEMPT FROM 582 FEES PER GC 27386.1 (2)(c)
FILED IN THE OFFICE OF THE CLERK TO THE BOARD OF SUPERVISORS THIS 25TH DAY OF APRIL, 2016.

FILED IN THE OFFICE OF THE CLERK TO THE BOARD OF SUPERVISORS THIS 25TH DAY OF APRIL, 2016.

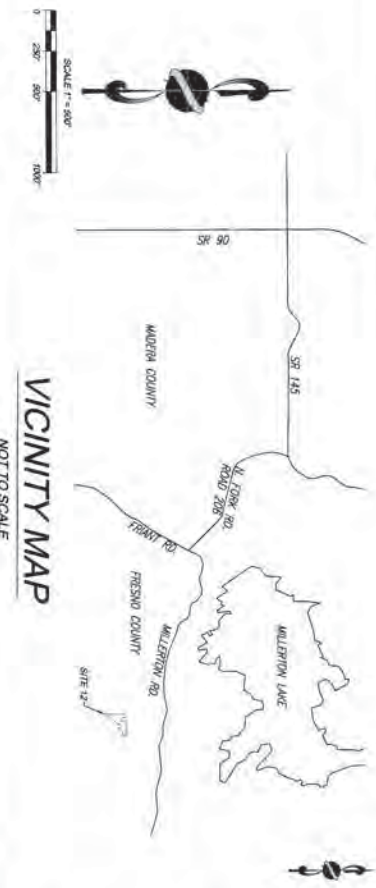
Angela Burdick
DEPUTY CLERK

THE LINES AND DIMENSIONS OF EACH LOT OR PARCEL SHOWN IN THIS MAP SHALL BE THOSE LINES AND DIMENSIONS AS SHOWN ON THE FRESNO COUNTY ASSESSOR'S MAP FOR THOSE PARCELS LISTED.

THE FRESNO COUNTY ASSESSOR'S MAP SHALL GOVERN FOR ALL DEEDS CONCERNING THE LINES AND DIMENSIONS OF SUCH LOTS AND PARCELS.

LEGEND	
OBJECT	DESCRIPTION
①	ASSESSMENT NUMBER
---	LOT LINES
---	CENTER LINE
---	MAP LIMITS
---	PROPOSED ANNEXATION TO CDP NO. 2006-01
---	EXISTING ANNEXATION CDP NO. 2006-01

ASST.	ASSESSOR'S PARCEL NO.	SITE NO.	TRACT MAP NO.
1	300-541-32	12	-
2	300-541-32	12	-
3	300-541-32	12	-



VICINITY MAP
NOT TO SCALE

PRECISION
CIVIL ENGINEERING, INC.
PLANNING • SURVEYING • CIVIL ENGINEERING
1234 O STREET, FRESNO, CALIFORNIA 93721
TEL: 559-449-4500 FAX: 559-449-4515
WWW.PRECISIONENG.NET

PROJECT TITLE:
MILLERTON SPECIFIC PLAN
SHEET DESCRIPTION:
ANNEXATION MAP NO. 10A SITE 12
CITY OF:
COUNTY OF:
FRESNO

PREPARED FOR:
ASSEMI GROUP
FRESNO, CA 93711
1396 W. HERDON SUITE 110
(559) 440-8308

REVISIONS:
DRAWN BY: RA
CHECKED BY: DY
DATE: 3/29/16

SHEET NUMBER:
1 OF 146
JOB NUMBER:
19-046

EXHIBIT A

ANNEXATION MAP NO. 10A OF COMMUNITY FACILITIES DISTRICT NO. 2006-01 (POLICE PROTECTION SERVICES), COUNTY OF FRESNO, STATE OF CALIFORNIA IN THE COUNTY OF FRESNO, STATE OF CALIFORNIA

SITE #13

I, HERBERT GENTRY, being duly sworn, depose and say that the within map showing boundaries of Annexation No. 10A of Community Facilities District No. 2006-01 (Police Protection Services), County of Fresno, State of California, was approved by the Board of Supervisors of the County of Fresno at a regular meeting thereof held on the 21st day of April, 2019, by its Resolution No. 19-038.

FILED IN THE OFFICE OF THE CLERK TO THE BOARD OF SUPERVISORS THE 21st DAY OF April, 2019.

Herbert Gentry
Clerk to the Board of Supervisors
of the County of Fresno

FILED THIS 24th day of April, 2019, AT THE HOUR OF 3:47 O'CLOCK P.M. IN BOOK 555, AT PAGE(S) 710.
WITNESSES MY HAND AND SEAL OF THE COUNTY OF FRESNO, CALIFORNIA, THIS 24th DAY OF April, 2019.
EXEMPT FROM S&L FEES PER GC 27388.1(2)(c)

FULL OFFICE, CHIEF
COUNTY ASSessor-RECORDER
OF THE COUNTY OF FRESNO

By *Angela B. Bickel*
Deputy Recorder
COUNTY OF FRESNO

THE LINES AND DIMENSIONS OF EACH LOT OR PARCEL SHOWN IN THIS DRAWING SHALL BE THOSE LINES AND DIMENSIONS AS SHOWN ON THE FRESNO COUNTY ASSESSOR'S MAP FOR THOSE PARCELS LISTED.

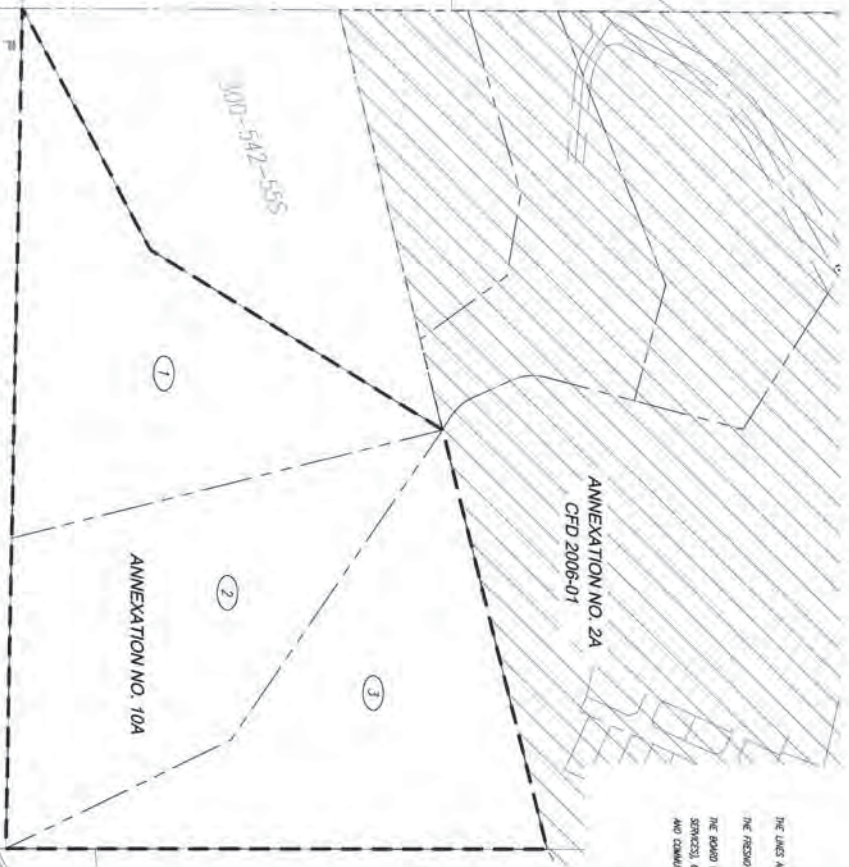
THE FRESNO COUNTY ASSESSOR'S MAP SHALL GOVERN FOR ALL DEEDS CONCERNING THE LINES AND DIMENSIONS OF SUCH LOTS AND PARCELS.

THE BOARD OF SUPERVISORS OF THE COUNTY OF FRESNO APPROVED THE ORIGINAL BOUNDARY MAP OF THE DISTRICT, ENTITLED "MAP OF PROPOSED BOUNDARIES OF COMMUNITY FACILITIES DISTRICT NO. 2006-01 (POLICE PROTECTION SERVICES), COUNTY OF FRESNO, STATE OF CALIFORNIA," WHICH WAS FILED PURSUANT TO SECTION 3111 OF THE CALIFORNIA STATUTES AND JUDICIAL CODE, ON APRIL 1, 2006, IN BOOK 41, AT PAGE(S) 80 AND 81 OF MAPS OF REASSESSMENT AND COMMUNITY FACILITIES DISTRICTS, IN THE OFFICE OF THE COUNTY RECORDER OF THE COUNTY OF FRESNO, STATE OF CALIFORNIA, AS INSTRUMENT NO. 2006009941.

ANNEXATION NO. 2A
CFD 2006-01

LEGEND	
COLLECT	DESCRIPTION
①	ASSESSMENT NUMBER
	LOT LINES
	EXTERIOR LINE
	ADJ. LINES
	PROPOSED ANNEXATION TO CTD NO. 2006-01
	EXISTING ANNEXATION CTD NO. 2006-01

ASSMT.	ASSESSOR'S PARCEL NO.	SITE NO.	TRACT MAP NO.
1	200-54-165	13	-
2	200-54-175	13	-
3	200-54-185	13	-



VICINITY MAP

NOT TO SCALE

PRECISION
CIVIL ENGINEERING, INC.
PLANNING • SURVEYING • CIVIL ENGINEERING
1234 O STREET, FRESNO, CALIFORNIA 93721
TEL: 559-449-4500 FAX: 559-449-4515
WWW.PRECISIONENG.NET

PROJECT TITLE: MILLERTON SPECIFIC PLAN
SHEET DESCRIPTION: ANNEXATION MAP NO. 10A SITE 13
CITY OF: FRESNO

PREPARED FOR:
ASSEMI GROUP
FRESNO, CA 93711
1396 W. HERDON SUITE 110
(559) 440-8308

DESIGNED BY: RA
CHECKED BY: DY
DATE: 3/29/19

SHEET NUMBER: 143 OF 146
JOB NUMBER: 19-046

EXHIBIT A

ANNEXATION MAP NO. 10A OF COMMUNITY FACILITIES DISTRICT NO. 2006-01 (POLICE PROTECTION SERVICES), COUNTY OF FRESNO, STATE OF CALIFORNIA IN THE COUNTY OF FRESNO, STATE OF CALIFORNIA SITE #14

I, HEREBY CERTIFY THAT THE INITIAL MAP SHOWING BOUNDARIES OF ANNEXATION NO. 10A OF COMMUNITY FACILITIES DISTRICT NO. 2006-01 (POLICE PROTECTION SERVICES), COUNTY OF FRESNO, STATE OF CALIFORNIA WAS APPROVED BY THE BOARD OF SUPERVISORS OF THE COUNTY OF FRESNO AT A REGULAR MEETING THEREOF HELD ON THE 24TH DAY OF April 2019 BY ITS RESOLUTION NO. R-188.

FILED IN THE OFFICE OF THE CLERK TO THE BOARD OF SUPERVISORS THE 24TH DAY OF April 2019.

David C. Smith
CLERK TO THE BOARD OF SUPERVISORS
OF THE COUNTY OF FRESNO

THE THIS 24TH OF April 2019, AT THE HOUR OF 3:47 O'CLOCK P.M. IN ROOM 45, AT PAGE(S) 21, MAPS OF ASSIGNMENT AND COMMUNITY FACILITIES DISTRICTS AND AS ASSIGNMENT NO. 2006-01 (POLICE PROTECTION SERVICES) IN THE COUNTY OF FRESNO, STATE OF CALIFORNIA, WAS EXEMPT FROM 582 FEE(S) 16K CC 273861(2)(c)

FILE, DISTRICT 20A
COUNTY ASSessor-RECORDER
OF THE COUNTY OF FRESNO

Angela Delapoe
CLERK TO THE BOARD OF SUPERVISORS
OF THE COUNTY OF FRESNO

THE LINES AND DIMENSIONS OF EACH LOT OR PARCEL SHOWN IN THIS DRAWING SHALL BE THOSE LINES AND DIMENSIONS AS SHOWN ON THE FRESNO COUNTY ASSessor'S MAP FOR THESE PARCELS LOCATED IN THE FRESNO COUNTY ASSessor'S MAP SHALL CONTAIN FOR ALL LOTS CONCERNING THE LINES AND DIMENSIONS OF SUCH LOTS AND PARCELS.

THE BOARD OF SUPERVISORS OF THE COUNTY OF FRESNO APPROVED THE ORIGINAL BOUNDARY MAP OF THE DISTRICT, DATED 11/11/06, AND PROPOSED BOUNDARIES OF COMMUNITY FACILITIES DISTRICT NO. 2006-01 (POLICE PROTECTION SERVICES), COUNTY OF FRESNO, STATE OF CALIFORNIA, WHICH WAS ALSO PRESENTED TO SECTION 3111 OF THE CALIFORNIA STREET AND HIGHWAYS CODE, ON APRIL 3, 2006, IN BOX 41, AT PAGE(S) 80 AND 81 OF MAPS OF ASSIGNMENT AND COMMUNITY FACILITIES DISTRICTS, IN THE OFFICE OF THE COUNTY RECORDER OF THE COUNTY OF FRESNO, STATE OF CALIFORNIA, AS ASSIGNMENT NO. 2006068941.

LEGEND	
OBJECT	DESCRIPTION
①	ASSIGNMENT NUMBER
	LOT LINES
	CENTER LINE
	ADJ. LOTS
	PROPOSED ANNEXATION TO CTD NO. 2006-01
	EXISTING ANNEXATION CTD NO. 2006-01

ASSIGN.	ASSIGNMENT/PARCEL NO.	SITE NO.	TRACT MAP NO.
1	200-44-41	14	
2	200-44-39	14	
3	200-44-40	14	



VICINITY MAP
NOT TO SCALE

EXHIBIT A

ANNEXATION MAP NO. 10A OF COMMUNITY FACILITIES DISTRICT NO. 2006-01 (POLICE PROTECTION SERVICES), COUNTY OF FRESNO, STATE OF CALIFORNIA

IN THE COUNTY OF FRESNO, STATE OF CALIFORNIA

SITE #15

I, HERBERT C. BERRY, CLERK OF THE BOARD OF SUPERVISORS OF THE COUNTY OF FRESNO, DO HEREBY CERTIFY THAT THE MAP SHOWING THE BOUNDARIES OF ANNEXATION NO. 10A OF COMMUNITY FACILITIES DISTRICT NO. 2006-01 (POLICE PROTECTION SERVICES), COUNTY OF FRESNO, STATE OF CALIFORNIA WAS APPROVED BY THE BOARD OF SUPERVISORS OF THE COUNTY OF FRESNO AT A REGULAR MEETING THEREOF HELD ON THE 21ST DAY OF APRIL, 2015 BY ITS RESOLUTION NO. 19-133.

FILED IN THE OFFICE OF THE CLERK TO THE BOARD OF SUPERVISORS THIS 22ND DAY OF APRIL, 2015.

Herbert C. Berry
CLERK TO THE BOARD OF SUPERVISORS
OF THE COUNTY OF FRESNO

FILED THIS 27TH DAY OF APRIL, 2015, AT THE HOUR OF 3:47, OFFICE OF PAUL D. DICKSON, JR., AT PARCELS 72.
MAPS OF ASSASSIN AND COMMUNITY FACILITIES DISTRICTS AND AS INSTRUMENT NO. 2006-01, THE OFFICE OF THE COUNTY RECORDER IN THE COUNTY OF FRESNO, STATE OF CALIFORNIA.
**EXEMPT FROM S&B FEES PER
GC 27388.1(2)(c)**

BY: *Paul D. Dickson, Jr.*
COUNTY ASSASSIN-RECORDER
OF THE COUNTY OF FRESNO

THE LINES AND DIMENSIONS OF EACH LOT OF PARCELS SHOWN IN THIS DRAWING SHALL BE THOSE LINES AND DIMENSIONS AS SHOWN ON THE FRESNO COUNTY ASSASSIN'S MAP FOR THOSE PARCELS LISTED.
THE FRESNO COUNTY ASSASSIN'S MAP SHALL GOVERN FOR ALL OTHERS CONCERNING THE LINES AND DIMENSIONS OF SUCH LOTS AND PARCELS.

THE BOARD OF SUPERVISORS OF THE COUNTY OF FRESNO APPROVED THE ORIGINAL BOUNDARY MAP OF THE DISTRICT, ENTITLED "MAP OF PROPOSED BOUNDARIES OF COMMUNITY FACILITIES DISTRICT NO. 2006-01 (POLICE PROTECTION SERVICES), COUNTY OF FRESNO, STATE OF CALIFORNIA", WHICH WAS FILED PURSUANT TO SECTION 2111 OF THE CALIFORNIA STATUTES AND HANDBOOK CODE, ON APRIL 1, 2006, IN BOOK 41, AT PAGE 87 AND IN DEEDS OF ASSASSIN AND COMMUNITY FACILITIES DISTRICTS, IN THE OFFICE OF THE COUNTY RECORDER OF THE COUNTY OF FRESNO, STATE OF CALIFORNIA, AS INSTRUMENT NO. 2006008641.

LEGEND	
OBJECT	DESCRIPTION
1	ASSASSIN'S MAP
	LOT LINES
	CENTER LINE
	ADJ. LINES
	PROPOSED ANNEXATION TO DISTRICT NO. 2006-01
	EXISTING ANNEXATION DISTRICT NO. 2006-01

ASSASSIN	ASSASSIN'S PARCEL NO.	SITE NO.	TRACT/MAP NO.
1	300-542-46	15	-



VICINITY MAP

NOT TO SCALE

PRECISION
CIVIL ENGINEERING, INC.
PLANNING • SURVEYING • CIVIL ENGINEERING
1334 O STREET, FRESNO, CALIFORNIA 93721
TEL: 559-449-4500 FAX: 559-449-4515
WWW.PRECISIONENG.NET

PROJECT TITLE:
MILLERTON SPECIFIC PLAN
SHEET DESCRIPTION:
ANNEXATION MAP NO. 10A SITE 15
CITY OF:
COUNTY OF:
FRESNO

PREPARED FOR:
ASSEMI GROUP
FRESNO, CA 93711
1396 W. HERDON SUITE 110
(559) 440-8308

REVISIONS:
DRAWN BY: RA
CHECKED BY: DY
DATE: 3/29/19

SHEET NUMBER:
145 OF 145
JOB NUMBER:
79-045

EXHIBIT A

The land referred to is situated in the County of Fresno, City of Friant, State of California, and is described as follows:

Parcels 1, 18, 19, and 20 of Parcel Map No. 3179 in the unincorporated area of the County of Fresno, State of California, according to the Amended Map thereof recorded in [Book 34, Page 94 of Parcel Maps](#), Fresno County Records.

EXCEPTING THEREFROM all oil, gas and minerals lying below a depth of 500 feet as conveyed to Carlsberg Resources Corporation, a California corporation, by Deed dated October 26, 1970, recorded October 30, 1970, in [Book 5832, Page 371](#) of Official Records, Instrument No. 76311.

APN: 300-032-12 as to Parcel 1	SITE 1
300-340-03 as to Parcel 18	
300-340-01 as to Parcel 19	SITE 2
300-021-27 as to Parcel 20	

EXHIBIT A

The land referred to is situated in the unincorporated area of the County of Fresno, State of California, and is described as follows:

PARCEL ONE: SITE 1

That portion of Parcel A of Lot Line Adjustment No. 01-17, recorded in Document No. [20020139830](#), Official Records Fresno County, situate in Section 10, Township 11 South, Range 21 East, Mount Diablo Base and Meridian, in the County of Fresno, State of California, according to the Official Plat thereof, being portions of Parcels 3 and 4, of Parcel Map No. 3179, according to the Amended Map thereof, recorded [in Book 34 of Parcel Maps, at Page 94](#), Fresno County Records, being more particularly described as follows:

Beginning at a point on the Southerly line of said Parcel 3, said point bears South 88° 10' 20" East, a distance of 85.41 feet from the Southwest corner of said Parcel 3; thence

- 1) North 03° 34' 40" West, a distance of 170.05 feet; thence
- 2) North 24° 30' 04" West, a distance of 35.61 feet; thence
- 3) North 07° 32' 54" West, a distance of 51.75 feet; thence
- 4) North 03° 32' 30" East, a distance of 54.49 feet; thence
- 5) North 14° 28' 23" West, a distance of 108.93 feet; thence
- 6) North 02° 57' 19" East, a distance of 104.61 feet; thence
- 7) South 39° 59' 09" East, a distance of 144.54 feet to the beginning of a tangent curve, concave Northeasterly, and having a radius of 117.50 feet; thence
- 8) Easterly along the arc of said tangent curve, through a central angle of 40° 11' 50", an arc distance of 82.43 feet; thence
- 9) South 80° 10' 59" East, a distance of 215.08 feet; thence
- 10) South 13° 35' 23" East, a distance of 115.70 feet; thence
- 11) South 06° 47' 35" East, a distance of 57.75 feet; thence
- 12) South 01° 39' 31" East, a distance of 73.06 feet; thence
- 13) South 26° 59' 18" West, a distance of 108.73 feet to said South line of Parcel 3; thence leaving said line
- 14) Continuing South 26° 59' 18" West, a distance of 40.43 feet to the beginning of a tangent curve, concave Southeasterly, and having a radius of 167.50 feet; thence
- 15) Southerly along the arc of said tangent curve, through a central angle of 21° 43' 59", an arc distance of 63.53 feet to a point of reverse curvature with a curve concave to the West, having a radius of 132.50 feet; thence
- 16) Southerly along the arc of said reverse curve, through a central angle of 25° 17' 33", an arc distance of 58.49 feet; thence
- 17) South 30° 32' 52" West, a distance of 134.54 feet to the beginning of a tangent curve, concave Northwesterly and having a radius of 132.50 feet; thence

- 18) Southwesterly along the arc of said tangent curve, through a central angle of 23° 00' 19", an arc distance of 53.19 feet; thence
- 19) South 53° 33' 10" West, a distance of 127.42 feet; thence
- 20) North 53° 43' 13" West, a distance of 160.87 feet; thence
- 21) North 34° 40' 56" East, a distance of 76.26 feet; thence
- 22) North 17° 08' 33" East, a distance of 120.61 feet; thence
- 23) North 00° 19' 55" East, a distance of 119.45 feet to the point of beginning.

This legal description is made pursuant to Certificate of Compliance Placer 06-32(A), recorded September 30, 2008, as Instrument No. [2008-140700](#) of Official Records.

ALSO EXCEPTING THEREFROM all oil, gas and minerals lying below a depth of 500 feet as conveyed to Carlsberg Resources Corporation, a California corporation, by Deed dated October 26, 1970, recorded October 30, 1970, in [Book 5832, Page 371 of Official Records, Document No. 76311](#)

APN: 300-032-65

PARCEL TWO:

SITE 1

That portion of Parcel B of Lot Line Adjustment No. 01-17, recorded in Document No. [20020139830](#), Official Records Fresno County, situate in Section 10, Township 11 South, Range 21 East, Mount Diablo Base and Meridian, in the County of Fresno, State of California, according to the Official Plat thereof, being a portion of Parcel 4, of Parcel Map No. 3179, according to the Amended Map thereof, recorded in Book 34 of Parcel Maps, at Page 94, Fresno County Records, being more particularly described as follows:

Beginning at the Southeast corner of said Parcel 4, said point also being on the centerline of an easement, a described by that Deed recorded on March 21, 1984, as Document No. [84027331 of Official Records of Fresno County](#); thence

- 1) North 88° 01' 09" West, along the South boundary line of said Parcel 4, a distance of 906.06 feet to the Northeast corner of said Parcel 16; thence
- 2) North 88° 00' 49" West, continuing along said South boundary line of Parcel 4, a distance of 52.26 feet; thence leaving said line
- 3) North 33° 37' 58" East, a distance of 48.65 feet; thence
- 4) South 86° 41' 49" East, a distance of 13.46 feet; thence
- 5) North 34° 59' 26" East, a distance of 28.87 feet; thence
- 6) North 81° 20' 15" East, a distance of 43.28 feet; thence
- 7) North 36° 39' 48" East, a distance of 45.81 feet; thence
- 8) South 52° 40' 26" East, a distance of 53.46 feet; thence
- 9) North 60° 12' 08" East, a distance of 121.33 feet; thence
- 10) North 36° 04' 52" East, a distance of 57.15 feet; thence
- 11) North 01° 54' 08" East, a distance of 51.42 feet; thence
- 12) North 15° 07' 29" West, a distance of 145.83 feet; thence
- 13) North 26° 37' 11" East, a distance of 45.12 feet; thence

- 14) North 52° 20' 01" East, a distance of 64.44 feet to the beginning of a tangent curve, concave Westerly, and having a radius of 55.00 feet; thence
- 15) Northerly along the arc of said tangent curve, through a central angle of 95° 37' 03", an arc distance of 91.79 feet; thence
- 16) North 43° 17' 02" West, a distance of 37.97 feet; thence
- 17) North 00° 06' 49" East, a distance of 31.30 feet; thence
- 18) South 88° 10' 20" East, a distance of 142.26 feet; thence
- 19) North 19° 34' 50" East, a distance of 42.00 feet to a point on the North line of said Parcel 4, said point being a distant 1093.32 feet from the Northwest corner of said Parcel 4; thence
- 20) South 88° 10' 20" East, along said North line, a distance of 629.32 feet to the Northeast corner of said Parcel 4; said corner being also on said centerline of said perpetual easement and right of way; thence continuing to follow said Easterly boundary along the subsequent courses and distances
- 21) South 03° 41' 33" East, along the Easterly boundary of said Parcel 4, a distance of 258.17 feet to the beginning of a tangent curve, concaving Westerly and having a radius of 500.00 feet; thence
- 22) Southwesterly along the arc of said tangent curve, through a central angle of 29° 26' 30", an arc distance of 256.93 feet along the East line of said Parcel 4; thence
- 23) South 25° 44' 57" West, a distance of 150.65 feet to the point of beginning.

This legal description is made pursuant to Certificate of Compliance Placer 06-32(B), recorded September 30, 2008, as Instrument No. [2008-140701](#) of Official Records.

ALSO EXCEPTING THEREFROM all oil, gas and minerals lying below a depth of 500 feet as conveyed to Carlsberg Resources Corporation, a California corporation, by Deed dated October 26, 1970, recorded October 30, 1970, in [Book 5832, Page 371](#) of Official Records, Document No. 76311

APN: 300-032-66

PARCEL THREE:

SITE 1

That certain real property situate in Section 10, Township 11 South, Range 21 East, Mount Diablo Base and Meridian, in the County of Fresno, State of California, according to the Official Plat thereof, being all of Parcel 2 and portions of Parcel 3, Parcel 4, Parcel 16 and Parcel 17, of Parcel Map No. 3179, according to the Amended Map thereof, recorded in Book 34 of Parcel Maps, at Page 94, Fresno County Records, being more particularly described as follows:

All of Parcel 2, together with Parcel 3 and Parcel 4 as shown on said Map, excepting therefrom the following described portion of said Parcel 3 and said Parcel 4:

Beginning at a point on the Southerly line of said Parcel 3, said point bears South 88° 10' 20" East, a distance of 85.41 feet from the Southwest corner of said Parcel 3; thence

- 1) North 03° 34' 40" West, a distance of 170.05 feet; thence
- 2) North 24° 30' 04" West, a distance of 35.61 feet; thence

- 3) North 07° 32' 54" West, a distance of 51.75 feet; thence
- 4) North 03° 32' 30" East, a distance of 54.49 feet; thence
- 5) North 14° 28' 23" West, a distance of 108.93 feet; thence
- 6) North 02° 57' 19" East, a distance of 104.61 feet; thence
- 7) South 39° 59' 09" East, a distance of 144.54 feet to the beginning of a tangent curve, concave Northeasterly and having a radius of 117.50 feet; thence
- 8) Easterly along the arc of said tangent curve, through a central angle of 40° 11' 50", an arc distance of 82.43 feet; thence
- 9) South 80° 10' 59" East, a distance of 215.08 feet; thence
- 10) South 13° 35' 23" East, a distance of 115.70 feet; thence
- 11) South 06° 47' 35" East, a distance of 57.75 feet; thence
- 12) South 01° 39' 31" East, a distance of 73.06 feet; thence
- 13) South 26° 59' 18" West, a distance of 108.73 feet to said South line of Parcel 3; thence leaving said line
- 14) Continuing South 26° 59' 18" West, a distance of 40.43 feet to the beginning of a tangent curve, concave Southeasterly and having a radius of 167.50 feet; thence
- 15) Southerly along the arc of said tangent curve, through a central angle of 21° 43' 59", an arc distance of 63.53 feet to a point of reverse curvature with a curve concave to the West, having a radius of 132.50 feet; thence
- 16) Southerly along the arc of said reverse curve, through a central angle of 25° 17' 33", an arc distance of 58.49 feet; thence
- 17) South 30° 32' 52" West, a distance of 134.54 feet to the beginning of a tangent curve, concave Northwesterly and having a radius of 132.50 feet; thence
- 18) Southwesterly along the arc of said tangent curve, through a central angle of 23° 00' 09", an arc distance of 53.19 feet; thence
- 19) South 53° 33' 10" West, a distance of 127.42 feet; thence
- 20) North 53° 43' 13" West, a distance of 160.87 feet; thence
- 21) North 34° 40' 56" East, a distance of 76.26 feet; thence
- 22) North 17° 08' 33" East, a distance of 120.61 feet; thence
- 23) North 00° 19' 55" East, a distance of 119.45 feet to the point of beginning.

ALSO EXCEPTING THEREFROM the following described portion of said Parcel 4:

Beginning at the Southeast corner of said Parcel 4, said point also being on the centerline of an easement, as described by that Deed recorded on March 21, 1984, as Document No. [84027331 of Official Records of Fresno County](#); thence

- 24) North 88° 01' 09" West, along the South boundary line of said Parcel 4, a distance of 960.06 feet to the Northeast corner of said Parcel 16; thence
- 25) North 88° 00' 49" West, continuing along said South boundary line of Parcel 4, a distance of 52.26 feet; thence leaving said line
- 26) North 33° 37' 58" East, a distance of 48.65 feet; thence
- 27) South 86° 41' 49" East, a distance of 13.46 feet; thence
- 28) North 34° 59' 26" East, a distance of 28.87 feet; thence

- 29) North 81° 20' 15" East, a distance of 43.28 feet; thence
- 30) North 36° 39' 48" East, a distance of 45.81 feet; thence
- 31) South 52° 40' 26" East, a distance of 53.46 feet; thence
- 32) North 60° 12' 08" East, a distance of 121.33 feet; thence
- 33) North 36° 04' 52" East, a distance of 57.15 feet; thence
- 34) North 01° 54' 08" East, a distance of 51.42 feet; thence
- 35) North 15° 07' 29" West, a distance of 145.83 feet; thence
- 36) North 26° 37' 11" East, a distance of 45.12 feet; thence
- 37) North 52° 20' 01" East, a distance of 64.44 feet to the beginning of a tangent curve, concave Westerly, and having a radius of 55.00 feet; thence
- 38) Northerly along the arc of said tangent curve, through a central angle of 95° 37' 03", an arc distance of 91.79 feet; thence
- 39) North 43° 17' 02" West, a distance of 37.97 feet; thence
- 40) North 00° 06' 49" East, a distance of 31.30 feet; thence
- 41) South 88° 10' 20" East, a distance of 142.26 feet; thence
- 42) North 19° 34' 50" East, a distance of 42.00 feet to a point on the North line of said Parcel 4, said point being a distant 1093.32 feet from the Northwest corner of said Parcel 4; thence
- 43) South 88° 10' 20" East, along said North line, a distance of 629.32 feet to the Northeast corner of said Parcel 4; said corner being also on said centerline of said perpetual easement and right of way; thence continuing to follow said Easterly boundary along the subsequent courses and distances
- 44) South 03° 41' 33" East, along the Easterly boundary of said Parcel 4, a distance of 258.17 feet to the beginning of a tangent curve, concaving Westerly and having a radius of 500.00 feet; thence
- 45) Southwesterly, along the arc of said tangent curve, through a central angle of 29° 26' 30", an arc distance of 256.93 feet along the East line of said Parcel 4; thence
- 46) South 25° 44' 57" West a distance of 150.65 feet to the point of beginning.

TOGETHER WITH the following described portion of said Parcel 17;

Beginning at the Northeast corner of said Parcel 17 of said Parcel Map; thence

- 47) South 02° 27' 56" West, along the East line of said Parcel 17, a distance of 449.00 feet; thence leaving said line
- 48) South 86° 19' 32" West, a distance of 40.44 feet; thence
- 49) North 54° 56' 18" West, a distance of 67.72 feet; thence
- 50) North 44° 26' 34" West, a distance of 80.51 feet; thence
- 51) North 78° 08' 56" West, a distance of 46.90 feet; thence
- 52) South 59° 51' 39" West, a distance of 46.99 feet; thence
- 53) South 79° 04' 36" West, a distance of 92.88 feet; thence
- 54) North 87° 42' 38" West, a distance of 68.89 feet; thence
- 55) North 73° 25' 16" West, a distance of 103.49 feet; thence

- 56) North 51° 58' 10" West, a distance of 38.42 feet to the beg of a tangent curve, concave Easterly and having a radius of 150.00 feet; thence
- 57) Northwesterly along the arc of said tangent curve, through a central angle of 78° 52' 27", an arc distance of 206.49 feet; thence
- 58) North 26° 54' 17" East, a distance of 73.98 feet; thence
- 59) North 02° 27' 46" East, a distance of 97.45 feet, to the North line of said Parcel 17; thence
- 60) South 88° 01' 49" East, along said North line, a distance of 551.50 feet to the point of beginning.

ALSO TOGETHER WITH the following described portion of said Parcel 16:

Beginning at the Northwest corner of said Parcel 16; thence

- 61) South 88° 40' 49" East, along the North line of said Parcel 16, a distance of 640.26 feet; thence leaving said line
- 62) South 18° 19' 33" West, a distance of 28.37 feet; thence
- 63) South 35° 29' 44" West, a distance of 30.20 feet; thence
- 64) South 49° 52' 55" West, a distance of 38.53 feet; thence
- 65) North 78° 11' 42" West, a distance of 27.37 feet; thence
- 66) South 40° 43' 47" West, a distance of 51.24 feet; thence
- 67) North 88° 40' 06" West, a distance of 41.90 feet; thence
- 68) South 15° 08' 58" West, a distance of 73.29 feet; thence
- 69) South 46° 09' 43" West, a distance of 55.48 feet; thence
- 70) South 36° 36' 49" West, a distance of 63.28 feet to the beginning point of a tangent curve concave Northerly and having a radius of 80.00 feet; thence
- 71) Westerly along the arc of said tangent curve, through a central angle of 80° 04' 45", an arc distance of 111.81 feet; thence
- 72) North 63° 18' 26" West, a distance of 68.81 feet; thence
- 73) North 67° 22' 27" West, a distance of 48.38 feet; thence
- 74) North 48° 13' 57" West, a distance of 30.67 feet; thence
- 75) North 17° 02' 16" West, a distance of 42.79 feet; thence
- 76) North 87° 28' 10" West, a distance of 57.59 feet; thence
- 77) South 15° 33' 44" West, a distance of 211.75 feet; thence
- 78) South 47° 56' 20" West, a distance of 64.91 feet to a point on the West line of said Parcel 16 distant 730.34 feet from the Southwest corner of said Parcel; thence
- 79) North 02° 27' 56" East, along said West line, a distance of 449.00 feet to the point of beginning.

This legal description is made pursuant to Certificate of Compliance Placer 06-33(A), recorded September 30, 2008, as Instrument No. [2008-140703](#) of Official Records.

ALSO EXCEPTING THEREFROM all oil, gas and minerals lying below a depth of 500 feet as conveyed to Carlsberg Resources Corporation, a California corporation, by Deed dated October

26, 1970, recorded October 30, 1970, in [Book 5832, Page 371](#) of Official Records, Document No. 76311

APN: 300-032-47;
300-032-68;
300-032-69;
300-340-16; and
300-340-36

PARCEL FOUR: SITE 1

That certain real property situate in Section 10, Township 11 South, Range 21 East, Mount Diablo Base and Meridian, in the County of Fresno, State of California, according to the Official Plat thereof, being a portion Parcel 17 of Parcel Map No. 3179, according to the Amended Map thereof, recorded in Book 34 of Parcel Maps, at Page 94, Fresno County Records, being more particularly described as follows:

All of said Parcel 17, excepting therefrom the following described portion:

Beginning at the Northeast corner of said Parcel 17, of said Parcel Map; thence

- 1) South 02° 27' 56" West, along the East line of said Parcel 17, a distance of 449.00 feet; thence leaving said line
- 2) South 86° 19' 32" West, a distance of 40.44 feet; thence
- 3) North 54° 56' 18" West, a distance of 67.72 feet; thence
- 4) North 44° 26' 34" West, a distance of 80.51 feet; thence
- 5) North 78° 08' 56" West, a distance of 46.90 feet; thence
- 6) South 59° 51' 39" West, a distance of 46.99 feet; thence
- 7) South 79° 04' 36" West, a distance of 92.88 feet; thence
- 8) North 87° 42' 38" West, a distance of 68.89 feet; thence
- 9) North 73° 25' 16" West, a distance of 103.49 feet; thence
- 10) North 51° 58' 10" West, a distance of 38.42 feet to the beginning of a tangent curve, concave Easterly and having a radius of 150.00 feet; thence
- 11) Northwesterly along the arc of said tangent curve, through a central angle of 78° 52' 27", an arc distance of 206.49 feet; thence
- 12) North 26° 54' 17" East, a distance of 73.98 feet; thence
- 13) North 02° 27' 46" East, a distance of 97.45 feet, to the North line of said Parcel 17; thence
- 14) South 88° 01' 49" East, along said North line, a distance of 551.50 feet to the point of beginning.

This legal description is made pursuant to Certificate of Compliance Placer 06-32(C), recorded September 30, 2008, as Instrument No. [2008-140702](#) of Official Records.

ALSO EXCEPTING THEREFROM all oil, gas and minerals lying below a depth of 500 feet as conveyed to Carlsberg Resources Corporation, a California corporation, by Deed dated October

26, 1970, recorded October 30, 1970, in [Book 5832, Page 371](#) of Official Records, Document No. 76311

APN: 300-340-30

PARCEL FIVE:

SITE 1

That certain real property situate in Section 10, Township 11 South, Range 21 East, Mount Diablo Base and Meridian, in the County of Fresno, State of California, according to the Official Plat thereof, being a portion of Parcel 15 and Parcel 16, of Parcel Map No. 3179, according to the Amended Map thereof, recorded in Book 34 of Parcel Maps, at Page 94, Fresno County Records, being more particularly described as follows:

Beginning at the Northwest corner of said Parcel 15; thence

- 1) South $01^{\circ} 09'$ East, along the North line of said Parcel 15, a distance of 960.06 feet to the Northeast corner of said Parcel, said point also being on the centerline of an easement as described by that Deed recorded on March 21, 1984, as Document No. [84027331](#) of Official Records Fresno County; thence continuing along the East line of said Parcel 15, following the subsequent courses and distances
- 2) South $25^{\circ} 44' 57''$ West, a distance of 80.81 feet to the beginning of a tangent curve, concave Easterly and having a radius of 500.00 feet; thence
- 3) Southerly along the arc of said tangent curve, through a central angle of $18^{\circ} 57' 19''$, an arc distance of 165.42 feet along said easement; thence
- 4) South $06^{\circ} 47' 38''$ West, a distance of 395.29 feet along said easement; thence
- 5) North $83^{\circ} 12' 22''$ West, a distance of 52.77 feet along said easement to a tangent curve, concave Southerly and having a radius of 206.00 feet; thence
- 6) Westerly along the arc of said tangent curve, through a central angle of $12^{\circ} 57' 42''$, an arc distance of 46.60 feet; thence leaving said East line
- 7) South $83^{\circ} 49' 56''$ West, a distance of 768.81 feet, to the West line of said Parcel 15; thence
- 8) North $02^{\circ} 28' 05''$ East, along said West line, a distance of 733.32 feet to the point of beginning.

TOGETHER WITH the following described portion of said Parcel 16:

All of said Parcel 16 excepting therefrom the following described portion:

Beginning at the Northwest corner of said Parcel 16; thence

- 9) South $88^{\circ} 00' 49''$ East, along the North line of said Parcel 16, a distance of 640.26 feet; thence leaving said line
- 10) South $18^{\circ} 19' 33''$ West, a distance of 28.37 feet; thence
- 11) South $35^{\circ} 29' 44''$ West, a distance of 30.20 feet; thence
- 12) South $49^{\circ} 52' 55''$ West, a distance of 38.53 feet; thence
- 13) North $78^{\circ} 11' 42''$ West, a distance of 27.37 feet; thence

- 14) South 40° 43' 47" West, a distance of 51.24 feet; thence
- 15) North 88° 40' 06" West, a distance of 41.90 feet; thence
- 16) South 15° 08' 58" West, a distance of 73.29 feet; thence
- 17) South 46° 09' 43" West, a distance of 55.48 feet; thence
- 18) South 36° 36' 49" West, a distance of 63.28 feet to the beginning point of a tangent curve concave Northeasterly and having a radius of 80.00 feet; thence
- 19) Westerly along the arc of said tangent curve, through a central angle of 80° 04' 45", an arc distance of 111.81 feet; thence
- 20) North 63° 18' 26" West, a distance of 68.81 feet; thence
- 21) North 67° 22' 27" West, a distance of 48.38 feet; thence
- 22) North 48° 13' 57" West, a distance of 30.67 feet; thence
- 23) North 17° 02' 16" West, a distance of 42.79 feet; thence
- 24) North 87° 28' 10" West, a distance of 57.59 feet; thence
- 25) South 15° 33' 44" West, a distance of 211.75 feet; thence
- 26) South 47° 56' 20" West, a distance of 64.91 feet to a point on the West line of said Parcel 16 distant 730.34 feet from the Southwest corner of said Parcel; thence
- 27) North 02° 27' 56" East, along said West line, a distance of 449.00 feet to the point of beginning

ALSO EXCEPTING the following described portion of said Parcel 16:

Beginning at the Southeast corner of said Parcel 16; thence

- 28) North 02° 28' 05" East, along the East line of said Parcel 16, a distance of 713.15 feet; thence leaving said line
- 29) South 83° 49' 56" West, a distance of 95.20 feet; thence
- 30) South 05° 05' 45" East, a distance of 182.13 feet; thence
- 31) South 04° 21' 10" West, a distance of 91.90 feet; thence
- 32) South 08° 43' 30" West, a distance of 28.62 feet; thence
- 33) South 15° 17' 15" West, a distance of 57.23 feet; thence
- 34) South 21° 23' 56" West, a distance of 54.53 feet; thence
- 35) South 46° 44' 14" West, a distance of 261.69 feet, to the Southerly boundary of said Parcel 16, said point also being the beginning of a non-tangent curve concave Northerly and having a radius of 886.91 feet, a radial to said point bears South 23° 15' 53" West; thence
- 36) Easterly, following the Southerly boundary of said Parcel 16, along the arc of said non-tangent curve, through a central angle of 14° 16' 48", an arc distance of 221.05 to the point of beginning.

This legal description is made pursuant to Certificate of Compliance Placer 06-33(B), recorded September 30, 2008, as Instrument No. [2008-140704](#) of Official Records.

ALSO EXCEPTING THEREFROM all oil, gas and minerals lying below a depth of 500 feet as conveyed to Carlsberg Resources Corporation, a California corporation, by Deed dated October

26, 1970, recorded October 30, 1970, in [Book 5832, Page 371](#) of Official Records, Document No. 76311

APN: 300-340-37

PARCEL SIX:

SITE 1

That certain real property situate in Section 10, Township 11 South, Range 21 East, Mount Diablo Base and Meridian, in the County of Fresno, State of California, according to the Official Plat thereof, being a portion of Parcel 15 and Parcel 16 of Parcel Map No. 3179, according to the Amended Map thereof, recorded in Book 34 of Parcel Maps, at Page 94, Fresno County Records, being more particularly described as follows:

All of said Parcel 15, excepting the following described portion:

Beginning at the Northwest corner of said Parcel 15; thence;

- 1) South 88° 01' 09" East, along the North line of said Parcel 15, a distance of 960.06 feet to the Northeast corner of said Parcel, said point also being on the centerline of an easement as described by that Deed recorded on March 21, 1984, as Document No. [84027331](#) of Official Records, Fresno County; thence continuing along the East line of said Parcel 15, following the subsequent courses and distances:
- 2) South 25° 44' 57" West, a distance of 80.81 feet to the beginning of a tangent curve, concave Easterly and having a radius of 500.00 feet; thence
- 3) Southerly along the arc of said tangent curve, through a central angle of 18° 57' 19", an arc distance of 165.42 feet along said easement; thence
- 4) South 06° 47' 38" West, a distance of 395.29 feet along said easement; thence
- 5) North 83° 12' 22" West, a distance of 52.77 feet along said easement to a tangent curve, concave Southerly and having a radius of 206.00 feet; thence
- 6) Westerly along the arc of said tangent curve, through a central angle of 12° 57' 42", an arc distance of 46.60 feet; thence leaving said line
- 7) South 83° 49' 56" West, a distance of 768.81 feet, to the West line of said Parcel 15; thence
- 8) North 02° 28' 05" East, along said West line, a distance of 733.32 feet to the point of beginning.

TOGETHER WITH the following described portion of said Parcel 16:

Beginning at the Southeast corner of said Parcel 16; thence

- 9) North 02° 28' 05" East, along the East line of said Parcel 16, a distance of 713.15 feet; thence leaving said line
- 10) South 83° 49' 56" West, a distance of 95.20 feet; thence
- 11) South 05° 05' 45" East, a distance of 182.13 feet; thence
- 12) South 04° 21' 10" West, a distance of 91.90 feet; thence
- 13) South 08° 43' 30" West, a distance of 28.62 feet; thence
- 14) South 15° 17' 15" West, a distance of 57.23 feet; thence

- 15) South $21^{\circ} 23' 56''$ West, a distance of 54.53 feet; thence
- 16) South $26^{\circ} 44' 14''$ West, a distance of 261.69 feet to the Southerly boundary of said Parcel 16, said point also being the beginning of a non-tangent curve concave Northerly and having a radius of 886.91 feet, a radial to said point bears South $23^{\circ} 15' 53''$ West; thence
- 17) Easterly following the Southerly boundary of said Parcel 16 along the arc of said non-tangent curve, through a central angle of $14^{\circ} 16' 48''$, an arc distance of 221.05 to the point of beginning.

This legal description is made pursuant to Certificate of Compliance Placer 06-33(C), recorded September 30, 2008, as Instrument No. [2008-140705](#) of Official Records.

ALSO EXCEPTING THEREFROM all oil, gas and minerals lying below a depth of 500 feet as conveyed to Carlsberg Resources Corporation, a California corporation, by Deed dated October 26, 1970, recorded October 30, 1970, in [Book 5832, Page 371](#) of Official Records, Document No. 76311

APN: 300-340-38

EXHIBIT A

The land referred to is situated in the unincorporated area of the County of Fresno, State of California, and is described as follows:

Tract I: **SITE 8**

The Northeast quarter of the Northwest quarter of Section 15, Township 11 South, Range 21 East, Mount Diablo Base and Meridian, in the County of Fresno, State of California, according to the Official Plat thereof.

APN: 300-542-12

Tract II: **SITE 9**

The South half of the Northwest quarter of Section 15, Township 11 South, Range 21 East, Mount Diablo Base and Meridian, in the County of Fresno, State of California, according to the Official Plat thereof.

APN: 300-542-13

Tract III: **SITE 5 / SITE 7**

Parcels 1, 3 and 4 of Parcel Map No. 5988, recorded in Book 41 of Parcel Maps, at Page 22, Fresno County Records.

EXCEPTING THEREFROM all oil, gas, minerals, hydrocarbons and kindred substances lying below a depth of 500 feet, but without the right of surface entry, as granted to Carlsberg Resources Corporation, a California corporation, by Deed recorded [October 30, 1970, in Book 5832, Page 371 of Official Records, Instrument No. 76311](#).

APN: 300-340-13
300-542-10
300-542-11

Tract IV: **SITE 3**

PARCEL 2 OF PARCEL MAP NO. 5988, ACCORDING TO THE MAP THEREOF RECORDED IN BOOK 41 PAGE 22 PARCEL MAPS, FRESNO COUNTY RECORDS; EXCEPTING THEREFROM ALL OIL, GAS, MINERALS, HYDROCARBONS AND KINDRED SUBSTANCES LYING BELOW A DEPTH OF 500 FEET BUT WITHOUT THE RIGHT OF SURFACE ENTRY, AS GRANTED TO CARLSBERG RESOURCES CORPORATION, A CALIFORNIA CORPORATION, BY DEED RECORDED OCTOBER 30, 1970, IN BOOK 5832 PAGE 371 OF OFFICIAL RECORDS, INSTRUMENT NO. 76311.

EXCEPTING THEREFROM A PORTION OF SAID PARCEL 2 BEING MORE PARTICULARLY DESCRIBED AS FOLLOWS:

COMMENCING AT THE SOUTHEAST CORNER OF SAID PARCEL 2;

THENCE ALONG THE EAST LINE OF SAID PARCEL 2 NORTH 01°47'08" EAST A DISTANCE OF 227.35 FEET TO THE TRUE POINT OF BEGINNING (P.O.B-1);

THENCE NORTH 15°24'03" WEST A DISTANCE OF 73.70 FEET;

THENCE NORTH 01°47'08" EAST PARALLEL WITH AND 21.78 FEET WESTERLY FROM EAST LINE OF SAID PARCEL 2, A DISTANCE OF 75.29 FEET;

THENCE NORTH 26°56'00" EAST A DISTANCE OF 51.24 FEET TO A POINT ON THE EAST LINE OF SAID PARCEL 2;

THENCE ALONG SAID EAST LINE SOUTH 01°47'08" WEST A DISTANCE OF 192.08 FEET TO THE TRUE POINT OF BEGINNING (P.O.B-1).

ALSO EXCEPTING THEREFROM A PORTION OF SAID PARCEL 2 BEING MORE PARTICULARLY DESCRIBED AS FOLLOWS:

COMMENCING AT THE SOUTHEAST CORNER OF SAID PARCEL 2;

THENCE ALONG THE EAST LINE OF SAID PARCEL 2 NORTH 01°47'08" EAST A DISTANCE OF 950.66 FEET TO THE TRUE POINT OF BEGINNING (P.O.B-2);

THENCE NORTH 43°29'57" WEST A DISTANCE OF 272.21 FEET;

THENCE NORTH 27°53'00" EAST A DISTANCE OF 224.53 FEET;

THENCE NORTH 62°31'36" EAST A DISTANCE OF 108.51 FEET TO A POINT ON THE EAST LINE OF SAID PARCEL 2;

THENCE ALONG SAID EAST LINE SOUTH 01°47'08" WEST A DISTANCE OF 446.20 FEET TO THE TRUE POINT OF BEGINNING (P.O.B-2).

TOGETHER WITH PORTIONS OF PARCELS 20 AND 21 OF PARCEL MAP NO. 5349 RECORDED IN BOOK 34 AT PAGES 19 AND 20 OF PARCEL MAPS, FRESNO COUNTY RECORDS, BEING MORE PARTICULARLY DESCRIBED AS FOLLOWS:

COMMENCING AT THE SOUTHEAST CORNER OF SAID PARCEL 2;

THENCE ALONG THE WEST LINE OF SAID PARCEL 2 NORTH 01°47'08" EAST A DISTANCE OF 1396.86 FEET TO THE TRUE POINT OF BEGINNING (P.O.B-3);

THENCE SOUTH 62°15'02" EAST A DISTANCE OF 311.63 FEET;

THENCE NORTH 58°08'13" EAST A DISTANCE OF 116.44 FEET;

THENCE SOUTH 39°59'15" EAST A DISTANCE OF 379.36 FEET;

THENCE SOUTH 88°45'40" EAST A DISTANCE OF 506.61 FEET;

THENCE NORTH 01°14'20" EAST A DISTANCE OF 57.39 FEET;

THENCE NORTH 17°48'29" EAST A DISTANCE OF 245.56 FEET;

THENCE NORTH 88°45'40" WEST A DISTANCE OF 75.50 FEET;

THENCE NORTH 66°34'29" WEST A DISTANCE OF 115.47 FEET;

THENCE NORTH 81°09'12" WEST A DISTANCE OF 441.68 FEET TO A POINT ON THE SOUTHERLY RIGHT OF WAY LINE OF MILLERTON ROAD AS DESCRIBED IN DOCUMENT NUMBER 23913, RECORDED IN BOOK 6568, PAGE 294, OFFICIAL RECORDS OF FRESNO COUNTY;

THENCE WESTERLY ALONG THE SAID SOUTHERLY RIGHT OF WAY LINE OF MILLERTON ROAD TO THE NORTHWEST CORNER OF LOT 21 OF SAID MAP;

THENCE ALONG THE WEST LINE OF SAID PARCEL 21 SOUTH 01°47'08" WEST A DISTANCE OF 171.32 FEET TO THE TRUE POINT OF BEGINNING (P.O.B-3).

EXCEPTING THEREFROM all oil, gas, minerals, hydrocarbons and kindred substances lying below a depth of 500 feet, but without the right of surface entry, as granted to Carlsberg Resources Corporation, a California corporation, by Deed recorded [October 30, 1970, in Book 5832, Page 371 of Official Records, Instrument No. 76311](#).

APN: 300-340-60 (new, not yet assessed)

EXHIBIT A

The land referred to is situated in the unincorporated area of the County of Fresno, State of California, and is described as follows:

Tract I: **SITE 14**

PARCEL 1:

THAT PORTION OF THE SOUTHEAST QUARTER OF SECTION 16, TOWNSHIP 11 SOUTH, RANGE 21 EAST, MOUNT DIABLO BASE AND MERIDIAN, ACCORDING TO THE UNITED STATES GOVERNMENT PLAT, DESCRIBED AS FOLLOWS

BEGINNING AT THE SOUTHWEST CORNER OF THE EAST HALF OF THE WEST HALF OF SAID SOUTHEAST QUARTER OF SECTION 16; THENCE NORTH $00^{\circ} 45' 27''$ EAST, ALONG THE WEST LINE OF THE EAST HALF OF THE WEST HALF OF SAID SOUTHEAST QUARTER OF SECTION 16, A DISTANCE OF 561.69 FEET; THENCE SOUTH $89^{\circ} 14' 33''$ EAST A DISTANCE OF 304.27 FEET TO THE TRUE POINT OF BEGINNING OF THIS DESCRIPTION; THENCE NORTH $21^{\circ} 51' 10''$ EAST A DISTANCE OF 118.88 FEET; THENCE NORTH $56^{\circ} 24' 02''$ EAST A DISTANCE OF 179.21 FEET; THENCE NORTH $33^{\circ} 56' 18''$ EAST A DISTANCE OF 399.53 FEET; THENCE NORTH $57^{\circ} 18' 52''$ EAST A DISTANCE OF 122.18 FEET; THENCE NORTH $38^{\circ} 37' 13''$ EAST A DISTANCE OF 684.84 FEET; THENCE NORTH $08^{\circ} 57' 22''$ EAST A DISTANCE OF 31.86 FEET; THENCE SOUTH $61^{\circ} 22' 23''$ EAST A DISTANCE OF 126.23 FEET TO THE POINT OF A CURVE, CONCAVE TO THE NORTHEAST, WITH A RADIUS OF 900.00 FEET, THENCE SOUTHEASTERLY ALONG SAID CURVE, THROUGH A CENTRAL ANGLE OF $22^{\circ} 42' 58''$, AN ARC DISTANCE OF 356.82 FEET; THENCE SOUTH $84^{\circ} 05' 21''$ EAST A DISTANCE OF 237.09 FEET; THENCE SOUTH $05^{\circ} 54' 39''$ WEST A DISTANCE OF 175.72 FEET; THENCE SOUTH $61^{\circ} 58' 27''$ WEST A DISTANCE OF 250.16 FEET; THENCE SOUTH $76^{\circ} 17' 09''$ WEST A DISTANCE OF 95.71 FEET; THENCE SOUTH $18^{\circ} 26' 44''$ WEST A DISTANCE OF 88.84 FEET; THENCE SOUTH $65^{\circ} 36' 00''$ WEST A DISTANCE OF 167.40 FEET; THENCE NORTH $85^{\circ} 38' 04''$ WEST A DISTANCE OF 156.14 FEET; THENCE SOUTH $40^{\circ} 46' 52''$ WEST DISTANCE OF 124.15 FEET; THENCE SOUTH $51^{\circ} 22' 50''$ WEST A DISTANCE OF 146.37 FEET; THENCE NORTH $77^{\circ} 07' 28''$ WEST A DISTANCE OF 219.61 FEET; THENCE SOUTH $39^{\circ} 42' 59''$ WEST A DISTANCE OF 156.83 FEET; THENCE SOUTH $06^{\circ} 13' 47''$ EAST A DISTANCE OF 62.96 FEET; THENCE SOUTH $53^{\circ} 59' 22''$ WEST A DISTANCE OF 77.43 FEET; THENCE SOUTH $47^{\circ} 32' 43''$ WEST A DISTANCE OF 258.78 FEET; THENCE SOUTH $71^{\circ} 13' 52''$ WEST A DISTANCE OF 121.62 FEET, THENCE NORTH $88^{\circ} 09' 34''$ WEST A DISTANCE OF 62.73 FEET, THENCE NORTH $34^{\circ} 29' 44''$ WEST A DISTANCE OF 60.87 FEET TO THE TRUE POINT OF BEGINNING.

APN: 300-542-39
300-542-40

PARCEL 2:

SITE 14

THAT PORTION OF THE SOUTHEAST QUARTER OF SECTION 16, TOWNSHIP 11 SOUTH, RANGE 21 EAST, MOUNT DIABLO BASE AND MERIDIAN, ACCORDING TO THE UNITED STATES GOVERNMENT PLAT, DESCRIBED AS FOLLOWS.

COMMENCING AT THE SOUTHWEST CORNER OF THE EAST HALF OF THE WEST HALF OF SAID SOUTHEAST QUARTER OF SECTION 16; THENCE NORTH $00^{\circ} 45' 27''$ EAST, ALONG THE WEST LINE OF THE EAST HALF OF THE WEST HALF OF SAID SOUTHEAST QUARTER OF SECTION 16, A DISTANCE OF 561.69 FEET; THENCE SOUTH $89^{\circ} 14' 33''$ EAST A DISTANCE OF 304.27 FEET, THENCE NORTH $21^{\circ} 51' 10''$ EAST A DISTANCE OF 118.88 FEET; THENCE NORTH $56^{\circ} 24' 02''$ EAST A DISTANCE OF 179.21 FEET; THENCE NORTH $33^{\circ} 56' 18''$ EAST A DISTANCE OF 399.53 FEET; THENCE NORTH $57^{\circ} 18' 52''$ EAST A DISTANCE OF 122.18 FEET; THENCE NORTH $38^{\circ} 37' 13''$ EAST A DISTANCE OF 684.84 FEET; THENCE NORTH $08^{\circ} 57' 22''$ EAST A DISTANCE OF 31.86 FEET TO THE TRUE POINT OF BEGINNING OF THIS DESCRIPTION; THENCE CONTINUING NORTH $08^{\circ} 57' 22''$ EAST A DISTANCE OF 161.08 FEET; THENCE NORTH $40^{\circ} 57' 32''$ EAST A DISTANCE OF 69.43 FEET; THENCE SOUTH $87^{\circ} 07' 00''$ EAST A DISTANCE OF 69.89 FEET TO A POINT ON A NON-TANGENT CURVE, CONCAVE TO THE SOUTHWEST, WITH A RADIUS OF 300.00 FEET (THE RADIAL TO SAID POINT BEARS NORTH $10^{\circ} 56' 13''$ WEST), THENCE SOUTHEASTERLY ALONG SAID CURVE, THROUGH A CENTRAL ANGLE OF $106^{\circ} 50' 52''$, AN ARC DISTANCE OF 559.45 FEET; THENCE SOUTH $05^{\circ} 54' 39''$ WEST A DISTANCE OF 52.82 FEET, THENCE NORTH $84^{\circ} 05' 21''$ WEST A DISTANCE OF 41.19 FEET TO THE POINT OF CURVATURE OF A CURVE, CONCAVE TO THE NORTHEAST, WITH A RADIUS OF 900.00 FEET; THENCE NORTHWESTERLY ALONG SAID CURVE, THROUGH A CENTRAL ANGLE OF $22^{\circ} 42' 58''$, AN ARC DISTANCE OF 356.82 FEET; THENCE NORTH $61^{\circ} 22' 23''$ WEST A DISTANCE OF 126.23 FEET TO THE TRUE POINT OF BEGINNING.

APN: 300-542-41

PARCEL 3:

SITE 15

THAT PORTION OF THE EAST HALF OF SECTION 16, TOWNSHIP 11 SOUTH, RANGE 21 EAST, MOUNT DIABLO BASE AND MERIDIAN, ACCORDING TO THE UNITED STATES GOVERNMENT PLAT, DESCRIBED AS FOLLOWS:

COMMENCING AT THE NORTHWEST CORNER OF THE EAST HALF OF THE WEST HALF OF THE SOUTHEAST QUARTER OF SAID SECTION 16; THENCE NORTH $69^{\circ} 57' 24''$ EAST A DISTANCE OF 446.22 FEET TO THE TRUE POINT OF BEGINNING OF THIS DESCRIPTION; THENCE SOUTH $64^{\circ} 45' 59''$ EAST, A DISTANCE OF 249.90 FEET; THENCE SOUTH $36^{\circ} 37' 58''$ EAST A DISTANCE OF 511.79 FEET; THENCE SOUTH $20^{\circ} 52' 54''$ WEST, A DISTANCE OF 305.34 FEET; THENCE NORTH $61^{\circ} 22' 23''$ WEST, A DISTANCE OF 198.44 FEET TO THE POINT OF CURVATURE OF A CURVE, CONCAVE TO THE NORTHEAST, WITH A RADIUS OF 560.00 FEET; THENCE NORTHWESTERLY AND NORTHEASTERLY ALONG SAID CURVE, THROUGH A CENTRAL ANGLE $84^{\circ} 03' 01''$, AN ARC DISTANCE OF 821.49 FEET TO THE TRUE POINT OF BEGINNING.

EXCEPTING THEREFROM THAT PORTION LYING NORTH OF SOUTH LINE OF THE NORTHEAST QUARTER OF SECTION 16, TOWNSHIP 11 SOUTH, RANGE 21 EAST, MOUNT DIABLO BASE AND MERIDIAN.

THIS LEGAL DESCRIPTION IS MADE PURSUANT TO THAT CERTAIN CERTIFICATE APPROVING A LOT LINE ADJUSTMENT, CERTIFICATE NO. 12-18, RECORDED MAY 24, 2013, AS [INSTRUMENT NO. 2013-0075084 OF OFFICIAL RECORDS](#).

APN: 300-542-48

Tract II: **SITE 12**

Portions of Section 15 and Section 16, Township 11 South, Range 21 East, Mount Diablo Base and Meridian, according to the Official Plat thereof, being more particularly described as follows:

Beginning at the Northwest corner of the Northeast quarter of said Section 16; thence

- 1) South 88° 20' 25" East, along the North line of said Northeast quarter, a distance of 1,509.93 feet to the Northwest corner of that Parcel of land described in Document No. 2006-0143583, Official Records of Fresno County; thence along the Westerly boundary of said Parcel following subsequent courses and distances
- 2) South 21° 41' 28" West, a distance of 670.08 feet;
- 3) South 35° 31' 20" East, a distance of 830.19 feet; thence
- 4) South 40° 21' 32" East, a distance of 60.00 feet; thence
- 5) North 49° 38' 28" East, a distance of 27.92 feet; thence
- 6) South 14° 49' 50" East, a distance of 871.78 feet; thence
- 7) South 31° 36' 17" East, a distance of 489.62 feet; thence
- 8) North 45° 31' 54" East, a distance of 531.57 feet to the East line of said Northeast quarter of Section 16; thence
- 9) South 01° 13' 22" West, along said East line, a distance of 439.13 feet to the Northwest corner of the Southwest quarter of said Section 15; thence
- 10) South 88° 13' 13" East, along the North line of said Southwest quarter, a distance of 755.75 feet to the centerline of White Fox Creek; thence along said centerline following the subsequent courses and distances
- 11) South 19° 56' 46" West, a distance of 72.49 feet; thence
- 12) North 85° 00' 30" West, a distance of 64.24 feet; thence

- 13) South 31° 16' 41" West, a distance of 173.07 feet; thence
- 14) South 07° 32' 49" West, a distance of 30.34 feet; thence
- 15) South 60° 14' 25" East, a distance of 15.12 feet; thence
- 16) North 51° 58' 21" East, a distance of 50.64 feet; thence
- 17) South 68° 02' 55" East, a distance of 20.01 feet; thence
- 18) South 08° 04' 11" East, a distance of 109.28 feet; thence
- 19) South 42° 12' 02" West, a distance of 12.77 feet; thence
- 20) North 87° 31' 46" West, a distance of 32.39 feet; thence
- 21) South 37° 15' 35" West, a distance of 11.40 feet; thence
- 22) South 17° 57' 04" East, a distance of 71.26 feet; thence
- 23) South 03° 52' 53" West, a distance of 37.55 feet; thence
- 24) South 37° 58' 25" West, a distance of 77.17 feet; thence
- 25) South 58° 06' 28" West, a distance of 52.04 feet; thence
- 26) North 55° 36' 08" West, a distance of 24.13 feet; thence
- 27) North 10° 41' 15" East, a distance of 88.28 feet; thence
- 28) North 35° 44' 47" West, a distance of 13.78 feet; thence
- 29) North 82° 10' 48" West, a distance of 56.38 feet; thence
- 30) South 70° 01' 31" West, a distance of 25.44 feet; thence
- 31) South 02° 10' 27" East, a distance of 47.81 feet; thence
- 32) South 87° 49' 33" West, a distance of 23.35 feet; thence
- 33) North 25° 34' 05" West, a distance of 33.23 feet; thence
- 34) North 45° 05' 04" West, a distance of 87.86 feet; thence
- 35) North 21° 03' 30" West, a distance of 82.48 feet; thence
- 36) South 66° 29' 29" West, a distance of 48.38 feet; thence
- 37) North 27° 08' 46" West, a distance of 61.63 feet; thence

- 38) South $54^{\circ} 42' 00''$ West, a distance of 49.76 feet; thence
- 39) North $80^{\circ} 26' 10''$ West, a distance of 123.11 feet; thence
- 40) South $62^{\circ} 09' 18''$ West, a distance of 30.53 feet; thence
- 41) South $02^{\circ} 44' 45''$ West, a distance of 47.97 feet; thence
- 42) South $41^{\circ} 03' 28''$ East, a distance of 73.48 feet; thence
- 43) South $24^{\circ} 09' 27''$ West, a distance of 53.77 feet; thence
- 44) South $75^{\circ} 42' 11''$ West, a distance of 52.74 feet; thence
- 45) South $35^{\circ} 36' 50''$ West, a distance of 206.11 feet to a point on the West line of said Southwest quarter of Section 15, said point being a distance of 721.70 feet Southerly of said Northwest corner of the Southwest quarter, thence leaving said West line and continuing along said centerline of White Fox Creek.
- 46) South $35^{\circ} 36' 50''$ West, a distance of 172.00 feet, thence leaving said centerline
- 47) South $02^{\circ} 29' 55''$ West, a distance of 186.99 feet to the Northeasterly corner of that Parcel of land described in Document No. [2002-0037453](#), Official Records of Fresno County, thence along the Northwesterly boundary of a said Parcel following the subsequent courses and distances
- 48) North $83^{\circ} 40' 49''$ West, a distance of 195.90 feet, thence
- 49) North $06^{\circ} 19' 11''$ East, a distance of 52.82 feet to the beginning of a tangent curve, concave to the Southwest, with a radius of 300.00 feet, thence along said curve
- 50) Northwesterly, through a central angle of $106^{\circ} 50' 52''$, an arc distance of 559.45 feet, thence
- 51) North $86^{\circ} 42' 28''$ West, 69.89 feet, thence
- 52) South $41^{\circ} 22' 04''$ West, 69.43 feet, thence
- 53) South $09^{\circ} 21' 54''$ West, a distance of 192.94 feet, thence
- 54) South $39^{\circ} 01' 45''$ West, a distance of 684.84 feet, thence
- 55) South $57^{\circ} 43' 24''$ West, a distance of 122.18 feet, thence
- 56) South $34^{\circ} 20' 50''$ West, a distance of 399.53 feet, thence
- 57) South $56^{\circ} 48' 34''$ West, a distance of 179.21 feet, thence
- 58) South $22^{\circ} 15' 42''$ West, a distance of 118.88 feet, thence

- 59) South 34° 05' 12" East, a distance of 60.87 feet, thence leaving said Northwesterly boundary
- 60) South 38° 49' 04" West, a distance of 106.13 feet, returning to said centerline of White Fox Creek, thence along said centerline following the subsequent courses and distances
- 61) South 10° 05' 17" West, a distance of 146.41 feet, thence
- 62) South 12° 27' 46" East, a distance of 128.54 feet, thence
- 63) South 20° 18' 39" West, a distance of 86.52 feet, thence
- 64) South 71° 09' 21" West, a distance of 160.16 feet, thence
- 65) South 57° 24' 44" West, a distance of 39.40 feet to the South line of the Southeast quarter of said Section 16; thence
- 66) North 88° 48' 08" West, along said South line, a distance of 70.53 feet to the Southwest corner of the East half of the West half of said Southeast quarter, thence
- 67) North 01° 09' 59" East, along the West line of said East half, a distance of 988.87 feet to the most Southwesterly corner of that Parcel of land described in Document No. [2002-0037456](#), Official Records of Fresno County, thence along the Easterly boundary of said Parcel following the subsequent courses and distances:
- 68) South 88° 17' 13" East, a distance of 172.04 feet, thence
- 69) North 50° 29' 02" East, a distance of 229.77 feet, thence
- 70) North 37° 55' 01" East, a distance of 582.64 feet, thence
- 71) North 44° 57' 55" East, a distance of 366.25 feet, thence
- 72) South 60° 57' 51" East, a distance of 178.34 feet, thence
- 73) North 21° 17' 26" East, a distance of 578.19 feet, thence
- 74) North 36° 13' 26" West, a distance of 681.91 feet, thence
- 75) North 00° 55' 14" West, a distance of 634.33 feet, thence
- 76) North 35° 39' 41" West, a distance of 126.89 feet, thence
- 77) North 49° 38' 17" East, a distance of 67.61 feet, thence
- 78) North 40° 21' 43" West, a distance of 119.90 feet to the beginning of a tangent curve, concave to the Southwest, with a radius of 360.00 feet, thence along said curve

- 79) Northwesterly, through a central angle of $16^{\circ} 11' 26''$, an arc distance of 101.73 feet, thence
- 80) North $06^{\circ} 09' 27''$ West, a distance of 306.42 feet, thence
- 81) North $88^{\circ} 20' 01''$ West, a distance of 298.19 feet, thence
- 82) South $45^{\circ} 06' 32''$ West, a distance of 167.09 feet, thence
- 83) North $88^{\circ} 57' 00''$ West, a distance of 84.95 feet, thence
- 84) South $03^{\circ} 16' 52''$ West, a distance of 127.97 feet, thence
- 85) South $06^{\circ} 39' 54''$ East, a distance of 61.17 feet, thence
- 86) South $02^{\circ} 53' 11''$ West, a distance of 363.84 feet, thence
- 87) North $63^{\circ} 00' 46''$ East, a distance of 442.99 feet, thence
- 88) South $35^{\circ} 42' 32''$ East, a distance of 146.77 feet, thence
- 89) South $39^{\circ} 24' 48''$ West, a distance of 98.07 feet, thence
- 90) South $53^{\circ} 32' 51''$ West, a distance of 704.59 feet, thence
- 91) South $01^{\circ} 09' 59''$ West, 397.31 feet to the Northwest corner of said East half; thence
- 92) North $88^{\circ} 34' 23''$ West, along the South line of said Northeast quarter of Section 16, a distance of 613.41 feet to the Southeasterly corner of that Parcel of land described in Document No. [2002-0037457](#), Official Records of Fresno County; thence along the Easterly boundary of said Parcel following the subsequent courses and distances:
- 93) North $20^{\circ} 25' 28''$ East, a distance of 413.22 feet, thence
- 94) North $14^{\circ} 51' 32''$ East, a distance of 626.05 feet, thence
- 95) North $36^{\circ} 58' 51''$ East, a distance of 273.76 feet, thence
- 96) South $76^{\circ} 43' 35''$ East, a distance of 83.61 feet, thence
- 97) North $11^{\circ} 58' 51''$ East, a distance of 745.82 feet, thence
- 98) North $48^{\circ} 42' 42''$ West, a distance of 398.99 feet, thence
- 99) North $74^{\circ} 41' 00''$ West, a distance of 139.69 feet, thence
- 100) South $29^{\circ} 28' 42''$ West, a distance of 611.16 feet to the West line of said Northeast quarter of Section 16; thence

- 101) North 01° 08' 39" East, along the West line of said Northeast quarter, a distance of 940.87 feet to the point of beginning.

This legal is made pursuant to that certain Certificate of Compliance recorded August 22, 2008 as Instrument No. [2008-0120599](#) of Official Records.

Together with that portion of the East half of Section 16, Township 11 South, Range 21 East, Mount Diablo Base and Meridian, according to the United States Government Plat, described as follows:

Beginning at the Northwest corner of the East half of the West half of the Southeast quarter of said Section 16; thence North 00° 45' 27" East a distance of 397.31 feet; thence North 53° 08' 19" East, a distance of 704.59 feet; thence North 39° 00' 16" East, a distance of 98.07 feet; thence North 36° 07' 04" West, a distance of 146.77 feet; thence South 62° 36' 14" West, a distance of 442.99 feet; thence North 02° 28' 39" East, a distance of 363.84 feet; thence North 07° 04' 26" West, a distance of 61.17 feet; thence North 02° 52' 20" East, a distance of 127.97 feet; thence South 89° 21' 32" East, a distance of 84.95 feet; thence North 44° 42' 00" East, a distance of 167.09 feet; thence South 88° 44' 33" East, a distance of 298.19 feet; thence South 06° 33' 59" East, a distance of 306.42 feet to a point on a non-tangent curve, concave to the Southwest, with a radius of 360.00 feet (the radial to said point bears North 33° 02' 19" East); thence Southeasterly along said curve, through a central angle of 16° 11' 26", an arc distance of 101.73 feet; thence South 40° 46' 15" East, a distance of 119.90 feet; thence South 49° 13' 45" West, a distance of 67.61 feet; thence South 36° 04' 13" East, a distance of 126.89 feet; thence South 01° 19' 46" East, a distance of 634.33 feet; thence South 36° 37' 58" East, a distance of 681.91 feet; thence South 20° 52' 54" West, a distance of 578.18 feet; thence North 61° 22' 23" West, a distance of 178.34 feet; thence South 44° 33' 23" West, a distance of 366.25 feet; thence South 37° 30' 29" West, a distance of 582.64 feet; thence South 50° 04' 30" West, a distance of 229.77 feet; thence North 88° 41' 45" West, a distance of 172.04 feet to a point on the West line of the East half of the West half of the Southeast quarter of said Section 16; thence North 00° 45' 27" East, along said West line of the East half of the West half of the Southeast quarter of Section 16, a distance of 1,637.46 feet to the point of beginning.

EXCEPTING THEREFROM that portion thereof described as follows:

Commencing at the Northwest corner of the East half of the West half of the Southeast quarter of said Section 16; thence North 69° 57' 24" East, a distance of 446.22 feet to the true point of beginning of this description; thence South 64° 45' 59" East, a distance of 249.90 feet; thence South 36° 37' 58" East, a distance of 511.79 feet; thence South 20° 52' 54" West, a distance of 305.34 feet; thence North 61° 22' 23" West, a distance of 198.44 feet to the point of curvature of a curve, concave to the Northeast, with a radius of 560.00 feet; thence Northwesterly and Northeasterly along said curve, through a central angle 84° 03' 01", an arc distance of 821.49 feet to the true point of beginning.

EXCEPTING THEREFROM that portion lying North of the South line of the Northeast quarter of Section 16, Township 11 South, Range 21 East, Mount Diablo Base and Meridian.

This legal description is made pursuant to that certain Certificate Approving a Lot Line Adjustment, Certificate No. 12-18 shown as Parcel C, recorded May 24, 2013, as Instrument No. [13-75084](#) of Official Records.

APN: 300-542-32
300-542-33
300-542-52

Tract III:

SITE 4

Portions of Section 15 and Section 16, Township 11 South, Range 21 East, Mount Diablo Base and Meridian, according to the Official Plat thereof, being more particularly described as follows:

Beginning at the Northwest corner of the Northeast quarter of said Section 16; thence

- 1) South 88° 20' 25" East, along the North line of said Northeast quarter, a distance of 1,509.93 feet to the Northwest corner of that parcel of land described in [Document No. 2006-0143583](#), Official Records of Fresno County; thence along the Westerly boundary of said Parcel following subsequent courses and distances
- 2) South 21° 41' 28" West, a distance of 670.08 feet;
- 3) South 35° 31' 20" East, a distance of 830.19 feet; thence
- 4) South 40° 21' 32" East, a distance of 60.00 feet; thence
- 5) North 49° 38' 28" East, a distance of 27.92 feet; thence
- 6) South 14° 49' 50" East, a distance of 871.78 feet; thence
- 7) South 31° 36' 17" East, a distance of 489.62 feet; thence
- 8) North 45° 31' 54" East, a distance of 531.57 feet to the East line of said Northeast quarter of Section 16; thence
- 9) South 01° 13' 22" West, along said East line, a distance of 439.13 feet to the Northwest corner of the Southwest quarter of said Section 15; thence
- 10) South 88° 13' 13" East, along the North line of said Southwest quarter, a distance of 755.75 feet to the centerline of White Fox Creek; thence along said centerline following the subsequent courses and distances
- 11) South 19° 56' 46" West, a distance of 72.49 feet; thence
- 12) North 85° 00' 30" West, a distance of 64.24 feet; thence
- 13) South 31° 16' 41" West, a distance of 173.07 feet; thence
- 14) South 07° 32' 49" West, a distance of 30.34 feet; thence
- 15) South 60° 14' 25" East, a distance of 15.12 feet; thence
- 16) North 51° 58' 21" East, a distance of 50.64 feet; thence

- 17) South 68° 02' 55" East, a distance of 20.01 feet; thence
- 18) South 08° 04' 11" East, a distance of 109.28 feet; thence
- 19) South 42° 12' 02" West, a distance of 12.77 feet; thence
- 20) North 87° 31' 46" West, a distance of 32.39 feet; thence
- 21) South 37° 15' 35" West, a distance of 11.40 feet; thence
- 22) South 17° 57' 04" East, a distance of 71.26 feet; thence
- 23) South 03° 52' 53" West, a distance of 77.17 feet; thence
- 24) South 37° 58' 25" West, a distance of 77.17 feet; thence
- 25) South 58° 06' 28" West, a distance of 52.04 feet; thence
- 26) North 55° 36' 08" West, a distance of 24.13 feet; thence
- 27) North 10° 41' 15" East, a distance of 88.28 feet; thence
- 28) North 35° 44' 47" West, a distance of 13.78 feet; thence
- 29) North 82° 10' 48" West, a distance of 56.38 feet; thence
- 30) South 70° 01' 31" West, a distance of 25.44 feet; thence
- 31) South 02° 10' 27" East, a distance of 47.81 feet; thence
- 32) South 87° 49' 33" West, a distance of 23.35 feet; thence
- 33) North 25° 34' 05" West, a distance of 33.23 feet; thence
- 34) North 45° 05' 04" West, a distance of 87.86 feet; thence
- 35) North 21° 03' 30" West, a distance of 82.48 feet; thence
- 36) South 66° 29' 29" West, a distance of 48.38 feet; thence
- 37) South 27° 08' 46" East, a distance of 61.63 feet; thence
- 38) South 54° 42' 00" West, a distance of 49.76 feet; thence
- 39) North 58° 26' 10" West, a distance of 123.11 feet; thence
- 40) South 62° 09' 18" West, a distance of 30.53 feet; thence
- 41) South 02° 44' 45" West, a distance of 47.97 feet; thence

- 42) South 41° 03' 28" East, a distance of 73.48 feet; thence
- 43) South 24° 09' 27" West, a distance of 53.77 feet; thence
- 44) South 75° 42' 11" West, a distance of 52.74 feet; thence
- 45) South 35° 36' 50" West, a distance of 206.11 feet to a point on the West line of said Southwest quarter of Section 15, said point being a distance of 721.70 feet Southwesterly of said Northwest corner of the Southwest quarter; thence leaving said West line and continuing along said centerline of White Fox Creek
- 46) South 35° 36' 50" West, a distance of 172.00 feet; thence leaving said centerline
- 47) South 02° 29' 55" West, a distance of 186.99 feet to the Northeasterly corner of that parcel of land described in [Document No. 2002-0037453](#), Official Records of Fresno County; thence along the Northwesterly boundary of a said Parcel following the subsequent courses and distances
- 48) North 83° 40' 49" West, a distance of 195.90 feet; thence
- 49) North 06° 19' 11" East, a distance of 52.82 feet to the beginning of a tangent curve, concave to the Southwest, with a radius of 300.00 feet; thence along said curve
- 50) Northwesterly, through a central angle of 106° 50' 52", an arc distance of 559.45 feet; thence
- 51) North 86° 42' 28" West, a distance of 69.89 feet; thence
- 52) South 41° 22' 04" West, a distance of 69.43 feet; thence
- 53) South 09° 21' 54" West, a distance of 192.94 feet; thence
- 54) South 39° 01' 45" West, a distance of 684.84 feet; thence
- 55) South 57° 43' 24" West, a distance of 122.18 feet; thence
- 56) South 34° 20' 50" West, a distance of 399.53 feet; thence
- 57) South 56° 48' 34" West, a distance of 179.21 feet; thence
- 58) South 22° 15' 42" West, a distance of 118.88 feet; thence
- 59) South 34° 05' 12" East, a distance of 60.87 feet; thence leaving said Northwesterly boundary
- 60) South 38° 49' 04" West, a distance of 106.13 feet, returning to said centerline of White Fox Creek; thence along said centerline following the subsequent courses and distances
- 61) South 10° 05' 17" West, a distance of 146.41 feet; thence

- 62) South 12° 27' 46" East, a distance of 128.54 feet; thence
- 63) South 20° 18' 39" West, a distance of 86.52 feet; thence
- 64) South 71° 09' 21" West, a distance of 160.16 feet; thence
- 65) South 57° 24' 44" West, a distance of 39.40 feet to the South line of the Southeast quarter of said 16; thence
- 66) North 88° 48' 08" West, along said South line, a distance of 70.53 feet to the Southwest corner of the East half of the West half of said Southeast quarter; thence
- 67) North 01° 09' 59" East, along the West line of said East half, a distance of 988.87 feet to the most Southerly corner of that parcel of land described in [Document No. 2002-0037456](#), Official Records of Fresno County; thence along the Easterly boundary of said Parcel following the subsequent courses and distances
- 68) South 88° 17' 13" East, a distance of 172.04 feet; thence
- 69) North 50° 29' 02" East, a distance of 229.77 feet; thence
- 70) North 37° 55' 01" East, a distance of 582.64 feet; thence
- 71) North 44° 57' 55" East, a distance of 366.25 feet; thence
- 72) South 60° 57' 51" East, a distance of 178.34 feet; thence
- 73) North 21° 17' 26" East, a distance of 578.19 feet; thence
- 74) North 36° 13' 26" West, a distance of 681.91 feet; thence
- 75) North 00° 55' 14" West, a distance of 634.33 feet; thence
- 76) North 35° 39' 41" West, a distance of 126.89 feet; thence
- 77) North 49° 38' 17" East, a distance of 67.61 feet; thence
- 78) North 40° 21' 43" West, a distance of 119.90 feet to the beginning of a tangent curve, concave to the Southwest, with a radius of 360.00 feet; thence along said curve
- 79) Northwesterly, through a central angle of 16° 11' 26", an arc distance of 101.73 feet; thence
- 80) North 86° 09' 27" West, a distance of 306.42 feet; thence
- 81) North 88° 20' 01" West, a distance of 298.19 feet; thence
- 82) South 45° 06' 32" West, a distance of 167.09 feet; thence

- 83) North 88° 57' 00" West, a distance of 84.95 feet; thence
- 84) South 03° 16' 52" West, a distance of 127.97 feet; thence
- 85) South 06° 39' 54" East, a distance of 61.17 feet; thence
- 86) South 02° 53' 11" West, a distance of 363.84 feet; thence
- 87) North 63° 00' 46" East, a distance of 442.99 feet; thence
- 88) South 35° 42' 32" East, a distance of 146.77 feet; thence
- 89) South 39° 24' 48" West, a distance of 98.07 feet; thence
- 90) South 53° 32' 51" West, a distance of 704.59 feet; thence
- 91) South 01° 09' 59" West, a distance of 397.31 feet to the Northwest corner of said East half; thence
- 92) North 88° 34' 23" West, along the South line of said Northeast quarter of Section 16, a distance of 613.41 feet to the Southeasterly corner of that parcel of land described in [Document No. 2002-0037457](#), Official Records of Fresno County; thence along the Easterly boundary of said Parcel following the subsequent courses and distances
- 93) North 20° 25' 28" East, a distance of 413.22 feet; thence
- 94) North 14° 51' 32" East, a distance of 626.05 feet; thence
- 95) North 36° 58' 51" East, a distance of 273.76 feet; thence
- 96) South 76° 43' 55" East, a distance of 83.61 feet; thence
- 97) North 11° 58' 51" East, a distance of 745.82 feet; thence
- 98) North 48° 42' 42" West, a distance of 398.99 feet; thence
- 99) North 74° 41' 00" West, a distance of 13969 feet; thence
- 100) South 29° 28' 42" West, a distance of 611.16 feet to the West line of said Northeast quarter of Section 16; thence
- 101) North 01° 08' 39" East, along the West line of said Northeast quarter, a distance of 940.87 feet to the point of beginning.

This legal is made pursuant to that certain Certificate of Correction recorded [August 22, 2008](#), as [Instrument No. 2008-0120599](#) of Official Records.

TOGETHER WITH that portion of the East half of Section 16, Township 11 South, Range 21 East, Mount Diablo Base and Meridian, according to the United States Government Plat, described as follows:

Beginning at the Northwest corner of the East half of the West half of the Southeast quarter of said Section 16; thence North 00° 45' 27" East, a distance of 397.31 feet; thence North 53° 08' 19" East, a distance of 704.59 feet; thence North 39° 00' 16" East, a distance of 98.07 feet; thence North 36° 07' 04" West, a distance of 146.77 feet; thence South 62° 36' 14" West, a distance of 442.99 feet; thence North 02° 28' 39" East, a distance of 363.84 feet; thence North 07° 04' 26" West, a distance of 61.17 feet; thence North 02° 52' 20" East, a distance of 127.97 feet; thence South 89° 21' 32" East, a distance of 84.95 feet; thence North 44° 42' 00" East, a distance of 167.09 feet; thence South 88° 44' 33" East, a distance of 298.19 feet; thence South 06° 33' 59" East, a distance of 306.42 feet to a point on a non-tangent curve, concave to the Southwest, with a radius of 360.00 feet (the radial to said point bears North 33° 02' 19" East); thence Southeasterly along said curve, through a central angle of 16° 11' 26", an arc distance of 101.73 feet; thence South 40° 46' 15" East, a distance of 119.90 feet; thence South 49° 13' 45" West, a distance of 67.61 feet; thence South 36° 04' 13" East, a distance of 126.89 feet; thence South 01° 19' 46" East, a distance of 634.33 feet; thence South 36° 37' 58" East, a distance of 681.91 feet; thence South 20° 52' 54" West, a distance of 578.18 feet; thence North 61° 22' 23" West, a distance of 178.34 feet; thence South 44° 33' 23" West, a distance of 366.25 feet; thence South 37° 30' 29" West, a distance of 582.64 feet; thence South 50° 04' 30" West, a distance of 229.77 feet; thence North 88° 41' 45" West, a distance of 172.04 feet to a point on the West line of the East half of the West half of the Southeast quarter of said Section 16; thence North 00° 45' 27" East, along said West line of the East half of the West half of the Southeast quarter of Section 16, a distance of 1,637.46 feet to the point of beginning.

EXCEPTING THEREFROM that portion lying South of the South line of the Northeast quarter of Section 16, Township 11 South, Range 21 East, Mount Diablo Base and Meridian.

ALSO that portion of the East half of Section 16, Township 11 South, Range 21 East, Mount Diablo Base and Meridian, according to the United States Government Plat, described as follows:

Commencing at the Northwest corner of the East half of the West half of the Southeast quarter of said Section 16; thence North 69° 57' 24" East, a distance of 446.22 feet to the true point of beginning of this description; thence South 64° 45' 59" East, a distance of 249.90 feet; thence South 36° 37' 58" East, a distance of 511.79 feet; thence South 20° 52' 54" West, a distance of 305.34 feet; thence North 61° 22' 23" West, a distance of 198.44 feet to the point of curvature of a curve, concave to the Northeast, with a radius of 560.00 feet; thence Northwesterly and Northeasterly along said curve, through a central angle 84° 03' 01", an arc distance of 821.49 feet to the true point of beginning.

EXCEPTING THEREFROM that portion lying South of the South line of the Northeast quarter of Section 16, Township 11 South, Range 21 East, Mount Diablo Base and Meridian.

This legal description is made pursuant to that certain Certificate approving a Lot Line Adjustment, Certificate No. 12-18, shown as Parcel A, recorded [May 24, 2013, as Instrument No. 2013-75084](#) of Official Records.

APN: 300-542-51

Tract IV:

PARCEL ONE:

SITE 5

That portion of the Northeast quarter of Section 16, Township 11 South, Range 21 East, Mount Diablo Base and Meridian, according to the Official Plat thereof, described as follows:

Beginning at the Northeast corner of said Northeast quarter of Section 16; thence South 00° 48' 55" West, along the East line of said Northeast quarter of Section 16, a distance of 117.01 feet to a point on a non-tangent curve, concave to the Northwest, with a radius of 720.00 feet (the radial of said point bears South 56° 21' 13" East); thence Southwesterly along said curve, through a central angle of 18° 39' 09", an arc distance of 234.40 feet; thence South 52° 17' 56" West, a distance of 203.01 feet to the point of curvature of a curve, concave to the Southeast, with a radius of 750.00 feet; thence Southwesterly along said curve, through a central angle of 33° 20' 47", an arc distance of 436.50 feet; thence South 18° 57' 09" West, a distance of 149.51 feet to the point of curvature of a curve, concave to the Northwest, with a radius of 650.00 feet; thence Southwesterly along said curve, through a central angle of 30° 22' 08", an arc distance of 344.52 feet; thence South 49° 14' 01" West, a distance of 11.58 feet; thence South 40° 45' 59" East, a distance of 35.89 feet to the point of curvature of a curve, concave to the Southwest, with a radius of 345.00 feet; thence Southeasterly along said curve, through a central angle of 25° 31' 42", an arc distance of 153.72 feet; thence South 15° 14' 17" East, a distance of 451.32 feet; thence North 74° 45' 43" East, a distance of 30.00 feet; thence South 89° 11' 05" East, a distance of 552.47 feet to a point on the East line of said Northeast quarter of Section 16; thence South 00° 48' 55" West, along said East line of the Northeast quarter of Section 16, a distance of 389.12 feet; thence South 45° 07' 27" West, a distance of 531.57 feet; thence North 32° 00' 44" West, a distance of 489.62 feet; thence North 15° 14' 17" West, a distance of 871.78 feet; thence South 49° 14' 01" West, a distance of 27.92 feet; thence North 40° 45' 59" West, a distance of 60.00 feet; thence North 35° 55' 47" West, a distance of 830.19 feet; thence North 21° 17' 01" East, a distance of 670.13 feet to a point on the North line of said Northeast quarter of Section 16; thence South 88° 44' 42" East, along said North line of the Northeast quarter of Section 16, a distance of 12,200.88 feet to the point of beginning.

This legal description is made pursuant to that certain Certificate approving a Lot Line Adjustment, Certificate No. Placer 01-15(A), recorded [September 30, 2002, as Instrument No. 02-170737](#) of Official Records.

APN: 300-542-05

PARCEL TWO:

SITE 6

That portion of the Northeast quarter of Section 16, Township 11 South, Range 21 East, Mount Diablo Base and Meridian, according to the United States Government Plat, described as follows:

Beginning at the Southwest corner of said Northeast quarter of Section 16; thence North 00° 44' 07" East, along the West line of said Northeast quarter of Section 16, a distance of 1,688.31 feet; thence North 29° 04' 10" East, a distance of 611.16 feet; thence South 75° 05' 32" East, a distance of 139.69 feet; thence South 49° 07' 14" East, a distance of 398.99 feet; thence South 11° 34' 19" West, a distance of 745.82 feet; thence North 77° 08' 07" West, a distance of 83.61 feet; thence South 36° 34' 19" West, a distance of 273.76 feet; thence South 14° 27' 00" West, a distance of 626.05 feet; thence South 20° 00' 56" West, a distance of 413.22 feet to a point on the South line of said Northeast quarter of Section 16; thence North 88° 58' 45" West, along

said South line of the Northeast quarter of Section 16, a distance of 63.38 feet to the point of beginning.

APN: 300-542-03

PARCEL THREE:

Easement appurtenant to Parcels One and Two:

A temporary easement for ingress and egress, access and public utility purposes, 60 feet in width, along the Northerly and Westerly boundaries of Fresno County, APN: 300-541-45 (now APN: 300-542-51), appurtenant to Fresno County APN: 300-541-05 and 300-531-03 (now APN: 300-542-05 and 300-542-03, respectively) (the Dominant Tenement) as described above, expiring upon Dominant tenement receiving alternative recorded access.

PARCEL FOUR:

Easement appurtenant to Parcel Two:

All easements and easement rights for ingress, egress, and utility purposes over and across the South 60 feet of Said Section 16, less any portion lying in Parcel 3 above, by that certain document entitled "Grant of Ingress, Egress, Access and Utility Easement and Agreement" by and among Millerton Investments, LLCC, a California limited liability company, as Grantor, and Grantor Real Estate Investments, LLC, a California limited liability company, as Grantee, which document recorded August 15, 2016 as Document No. [2016-0106338](#), Fresno County Records.

EXHIBIT A

The land referred to is situated in the unincorporated area of the County of Fresno, State of California, and is described as follows:

Tract I:

PARCEL A: SITE 11

PARCEL B OF LOT LINE ADJUSTMENT PLA NO. 17-15 AS APPROVED BY THE COUNTY OF FRESNO AND AS SET FORTH AS "PARCEL B" IN THAT CERTAIN GRANT DEED RECORDED NOVEMBER 9, 2018 AS DOCUMENT [NO. 2018-0136721](#), FRESNO COUNTY RECORDS, AND AS PER THAT CERTAIN "CERTIFICATE OF COMPLIANCE PLA NO. 17-15(A)" RECORDED NOVEMBER 21, 2018 AS DOCUMENT [NO. 2018-0140766](#), FRESNO COUNTY RECORDS, MORE PARTICULARLY DESCRIBED AS FOLLOWS:

THAT PORTION OF THE NORTHEAST QUARTER OF SECTION 15, TOWNSHIP 11 SOUTH, RANGE 21 EAST, MOUNT DIABLO BASE AND MERIDIAN, ACCORDING TO THE UNITED STATES GOVERNMENT TOWNSHIP PLATS.

COMMENCING AT: THE NORTH QUARTER CORNER OF SECTION 15, TOWNSHIP 11 SOUTH, RANGE 21 EAST; SAID POINT ALSO BEING THE NORTHWEST CORNER OF PARCEL 8 OF PARCEL MAP NO. 5768, RECORDED IN BOOK 42, AT PAGE 11, FRESNO COUNTY RECORDS

THENCE ALONG THE WEST LINE OF THE NORTHEAST QUARTER OF SAID SECTION 15 SOUTH 00°33'18" WEST, A DISTANCE OF 1273.96 FEET TO THE TRUE POINT OF BEGINNING;

THENCE NORTH 80°08'35" EAST, A DISTANCE OF 587.98 FEET; THENCE NORTH 88°30'13" EAST, A DISTANCE OF 206.18 FEET; THENCE SOUTH 68°45'04" EAST, A DISTANCE OF 51.98 FEET; THENCE SOUTH 46°00'21" EAST, A DISTANCE OF 91.22 FEET; THENCE SOUTH 34°45'34" EAST, A DISTANCE OF 193.97 FEET; TO A POINT ON THE NORTH LINE OF LOT 6 OF SAID TRACT 5768; THENCE ALONG SAID NORTH LINE NORTH 76°19'09" EAST, A DISTANCE OF 288.47 FEET TO THE NORTHEAST CORNER OF SAID LOT 6; THENCE SOUTH 32°03'11" WEST, A DISTANCE OF 1054.47 FEET; THENCE SOUTH 62°22'46" EAST, A DISTANCE OF 839.49 FEET TO THE CENTER QUARTER CORNER OF SAID SECTION 15; THENCE NORTH 00°33'18" EAST, A DISTANCE OF 1350.27 FEET TO THE TRUE POINT OF BEGINNING.

EXCEPTING THEREFROM ALL OIL, GAS, MINERALS, HYDROCARBONS AND KINDRED SUBSTANCES LYING BELOW A DEPTH OF 500 FEET BUT WITHOUT THE RIGHT OF SURFACE ENTRY, AS GRANTED TO CARLSBERG RESOURCES CORPORATION, A CALIFORNIA CORPORATION, BY DEED RECORDED OCTOBER 30, 1970, IN [BOOK 5832, PAGE 371 OF OFFICIAL RECORDS, DOCUMENT NO. 76311](#).

APN: 300-542-55 (new, not yet assessed) Being 300-542-15 and a portion of 300-542-14

SITE 10

PARCEL B:

A PORTION OF PARCELS 12 AND 13 OF PARCEL MAP NO. 5349, RECORDED IN [BOOK 34 PAGES 19 AND 20 OF PARCEL MAPS](#), FRESNO COUNTY RECORDS, DESCRIBED AS FOLLOWS:

COMMENCING AT THE NORTHWEST CORNER OF SAID PARCEL 13; THENCE ALONG THE NORTH LINE OF PARCEL 13 THE FOLLOWING COURSES: NORTH 81° 46' 53" EAST, 105.43 FEET; THENCE ALONG A CURVE TO THE LEFT HAVING A RADIUS OF 4702.75 FEET, A CENTRAL ANGLE OF 6° 07' 30" AND AN ARC LENGTH OF 502.73 FEET; THENCE NORTH 75° 39' 23" EAST, 189.27 FEET TO THE TRUE POINT OF BEGINNING; THENCE SOUTH 41° 59' 11" EAST, 409.72 FEET AND LEAVING SAID NORTH LINE; THENCE ALONG A CURVE TO THE RIGHT HAVING A RADIUS OF 300.00 FEET, A CENTRAL ANGLE OF 69° 35' 16" AND AN ARC LENGTH OF 364.36 FEET; THENCE ALONG A REVERSE CURVE TO THE LEFT HAVING A RADIUS OF 735.00 FEET, A CENTRAL ANGLE OF 40° 46' 43" AND AN ARC LENGTH OF 523.11 FEET; THENCE ALONG A REVERSE CURVE TO THE RIGHT HAVING A RADIUS OF 300.00 FEET, A CENTRAL ANGLE OF 26° 10' 58" AND AN ARC LENGTH OF 137.09 FEET TO A POINT ON THE SOUTH LINE OF SAID PARCEL 12; THENCE SOUTH 76° 52' 19" EAST, 291.28 FEET ALONG THE SOUTH LINE OF PARCEL 12; THENCE SOUTH 88° 04' 56" EAST, 250.24 FEET TO THE SOUTHEAST CORNER OF PARCEL 12; THENCE NORTH 2° 22' 34" EAST, 1272.83 FEET TO THE NORTHEAST CORNER OF PARCEL 12; THENCE ALONG THE NORTH LINE OF PARCELS 12 AND 13 THE FOLLOWING COURSES: NORTH 75° 52' 38" WEST, 378.90 FEET; THENCE ALONG A CURVE TO THE LEFT HAVING A RADIUS OF 955.59 FEET, A CENTRAL ANGLE OF 19° 41' 20" AND AN ARC LENGTH OF 328.38 FEET TO THE NORTHWEST CORNER OF PARCEL 12; THENCE CONTINUING WESTERLY ALONG SAID 955.59 FOOT RADIUS CURVE THROUGH A CENTRAL ANGLE OF 8° 46' 39" AND AN ARC LENGTH OF 146.39 FEET; THENCE SOUTH 75° 39' 23" WEST, 2.12 FEET TO THE POINT OF BEGINNING.

EXCEPTING THEREFROM ALL OIL, GAS, MINERALS, HYDROCARBONS AND KINDRED SUBSTANCES LYING BELOW A DEPTH OF 500 FEET BUT WITHOUT THE RIGHT OF SURFACE ENTRY, AS GRANTED TO CARLSBERG RESOURCES CORPORATION, A CALIFORNIA CORPORATION, BY DEED RECORDED OCTOBER 30, 1970, IN [BOOK 5832, PAGE 371 OF OFFICIAL RECORDS](#), DOCUMENT NO. 76311.

APN: 300-350-28

PARCEL C:

PARCEL A OF LOT LINE ADJUSTMENT PLA NO. 17-15 AS APPROVED BY THE COUNTY OF FRESNO AND AS SET FORTH AS "PARCEL A" IN THAT CERTAIN GRANT DEED RECORDED NOVEMBER 9, 2018 AS DOCUMENT [NO. 2018-0136721](#), FRESNO COUNTY RECORDS, AND AS PER THAT CERTAIN "CERTIFICATE OF COMPLIANCE PLA NO. 17-15(A)" RECORDED NOVEMBER 21, 2018 AS DOCUMENT [NO. 2018-0140765](#), FRESNO COUNTY RECORDS, MORE PARTICULARLY DESCRIBED AS FOLLOWS:

THAT PORTION OF THE NORTHEAST QUARTER OF SECTION 15, TOWNSHIP 11 SOUTH, RANGE 21 EAST, MOUNT DIABLO BASE AND MERIDIAN, ACCORDING TO THE UNITED STATES GOVERNMENT TOWNSHIP PLATS.

COMMENCING AT: THE NORTH QUARTER CORNER OF SECTION 15, TOWNSHIP 11 SOUTH, RANGE 21 EAST; SAID POINT ALSO BEING THE NORTHWEST CORNER OF LOT 8 PARCEL MAP NO 5768 RECORDED IN BOOK 42 AT PAGES 11, FRESNO COUNTY RECORDS AND THE TRUE POINT OF BEGINNING;

THENCE ALONG THE WEST LINE OF THE NORTHEAST QUARTER OF SAID SECTION 15 SOUTH 00°03'18"EAST A DISTANCE OF 1273.96 FEET, THENCE NORTH 80°08'35" EAST A DISTANCE OF 587.98 FEET, THENCE NORTH 88°30' 13" EAST, A DISTANCE OF 206.18 FEET, THENCE SOUTH 68°45'04" EAST A DISTANCE OF 51.98 FEET, THENCE SOUTH 46°00'21" EAST, A DISTANCE OF 91.22 FEET; THENCE SOUTH 34°45'34" EAST A DISTANCE OF 193.97 FEET, TO A POINT ON THE NORTH LINE OF LOT 6 OF SAID PARCEL MAP; THENCE ALONG SAID NORTH LINE NORTH 76°19'09" EAST A DISTANCE OF 288.47 FEET, TO THE NORTHWEST CORNER OF LOT 3 OF SAID PARCEL MAP; THENCE ALONG THE NORTH LINE OF SAID LOT 3 NORTH 76°18'06" EAST A DISTANCE OF 1330.33 FEET TO A POINT ON THE SOUTHEAST CORNER OF LOT #1 OF TRACT 4870 RECORDED IN BOOK 81, AT PAGES 47 THRU 58 OFFICIAL RECORDS OF FRESNO COUNTY; THENCE ALONG THE EAST LINE OF SAID LOT 1, NORTH 00°17'41" EAST, A DISTANCE OF 402.56 FEET; THENCE NORTH 63°25'09" WEST, A DISTANCE OF 77.84 FEET; THENCE SOUTH 24°45'45" WEST, A DISTANCE OF 422.52 FEET, THENCE NORTH 64°58'41" WEST A DISTANCE OF 183.00 FEET; THENCE SOUTH 24°45'45" WEST, A DISTANCE OF 32.21 FEET; THENCE NORTH 65°14'15" WEST, A DISTANCE OF 25.00 FEET; THENCE NORTH 65°14'15" WEST, A DISTANCE OF 25.00 FEET; THENCE NORTH 76°57'50" WEST, A DISTANCE OF 340.35 FEET; THENCE NORTH 89°37'41" WEST, A DISTANCE OF 47.50 FEET; THENCE SOUTH 73°55'37" WEST, A DISTANCE OF 47.50 FEET; THENCE SOUTH 60°31'20" WEST, A DISTANCE OF 763.50 FEET; THENCE NORTH 23°12'06" WEST, A DISTANCE OF 153.00 FEET; THENCE NORTH 25°14'22" EAST, A DISTANCE OF 17.93 FEET TO THE BEGINNING OF A NON-TANGENT CURVE, CONCAVE NORTHEASTERLY, HAVING A RADIUS OF 47.00 FEET, A RADIAL LINE TO SAID POINT BEARS SOUTH 31°01'11" WEST, THENCE NORTHWESTERLY, ALONG SAID CURVE THRU A CENTRAL ANGLE OF 51°22'16" AN ARC LENGTH OF 42.14 FEET; THENCE NORTH 75°14'53" WEST, A DISTANCE OF 172.00 FEET; THENCE NORTH 42°03'17" WEST, A DISTANCE OF 122.00 FEET TO THE BEGINNING OF A NON-TANGENT CURVE, CONCAVE NORTHWEST, HAVING A RADIUS OF 325.00 FEET, A RADIAL LINE TO SAID POINT BEARS SOUTH 38°40'33" EAST, THENCE SOUTHWESTERLY, ALONG SAID CURVE THRU A CENTRAL ANGLE OF 44°09'24" AN ARC LENGTH OF 250.47 FEET; THENCE NORTH 84°31'09" WEST, A DISTANCE OF 250.50 FEET TO THE POINT OF BEGINNING OF A TANGENT CURVE, CONCAVE NORTHEAST, HAVING A RADIUS OF 247.00 FEET, THENCE NORTHWESTERLY, ALONG SAID CURVE THRU A CENTRAL ANGLE OF 27°33'44" AN ARC LENGTH OF 118.82 FEET; THENCE NORTH 56°57'26" WEST, A DISTANCE OF 31.23 FEET; THENCE SOUTH 81°09'05" WEST, A DISTANCE OF 44.66 FEET TO THE POINT OF BEGINNING OF A NON TANGENT CURVE, CONCAVE TO THE NORTHWEST, HAVING A RADIUS 842.00 FEET, A RADIAL LINE TO SAID POINT BEARS SOUTH 49°43'08" EAST, THENCE NORTHEASTERLY, ALONG SAID CURVE THRU A CENTRAL ANGLE OF 11°43'19" AN ARC LENGTH OF 172.26 FEET; THENCE NORTH 28°33'33" EAST, A DISTANCE OF 141.20 FEET TO THE POINT OF BEGINNING OF A TANGENT CURVE, CONCAVE SOUTHEAST, HAVING A RADIUS OF 558.00 FEET, THENCE NORTHEASTERLY, ALONG SAID CURVE THRU A CENTRAL ANGLE OF 33°31'37" AN ARC LENGTH OF 326.52 FEET; THENCE NORTH 62°05'10" EAST, A DISTANCE OF 499.60 FEET; THENCE NORTH 58°03'28" WEST A DISTANCE OF 278.41 FEET TO A POINT ON THE NORTH

LINE OF SAID SECTION 15; THENCE ALONG THE NORTH LINE OF SAID SECTION 15, NORTH 88°45'40" WEST, A DISTANCE OF 622.83 FEET MORE OR LESS TO THE TRUE POINT OF BEGINNING.

EXCEPTING THEREFROM ALL OIL, GAS, MINERALS, HYDROCARBONS AND KINDRED SUBSTANCES LYING BELOW A DEPTH OF 500 FEET BUT WITHOUT THE RIGHT OF SURFACE ENTRY, AS GRANTED TO CARLSBERG RESOURCES CORPORATION, A CALIFORNIA CORPORATION, BY DEED RECORDED OCTOBER 30, 1970, IN [BOOK 5832 PAGE 371 OF OFFICIAL RECORDS, INSTRUMENT NO. 76311](#)

APN: 300-542-54 (new, not yet assessed) Being a portion of 300-542-14

Tract II:

SITE 13

Parcels 3, 4, and 5 of Parcel Map No. 5768, according to the Map thereof recorded in [Book 42 Page 11 of Parcel Maps](#), Fresno County Records.

EXCEPTING THEREFROM all oil, gas, minerals, hydrocarbons and kindred substances lying below a depth of 500 feet but without the right of surface entry, as granted to Carlsberg Resources Corporation, a California corporation, by Deed recorded October 30, 1970, in [Book 5832, Page 371 of Official Records, Document No. 76311](#).

APN: 300-542-16
300-542-17
300-542-18