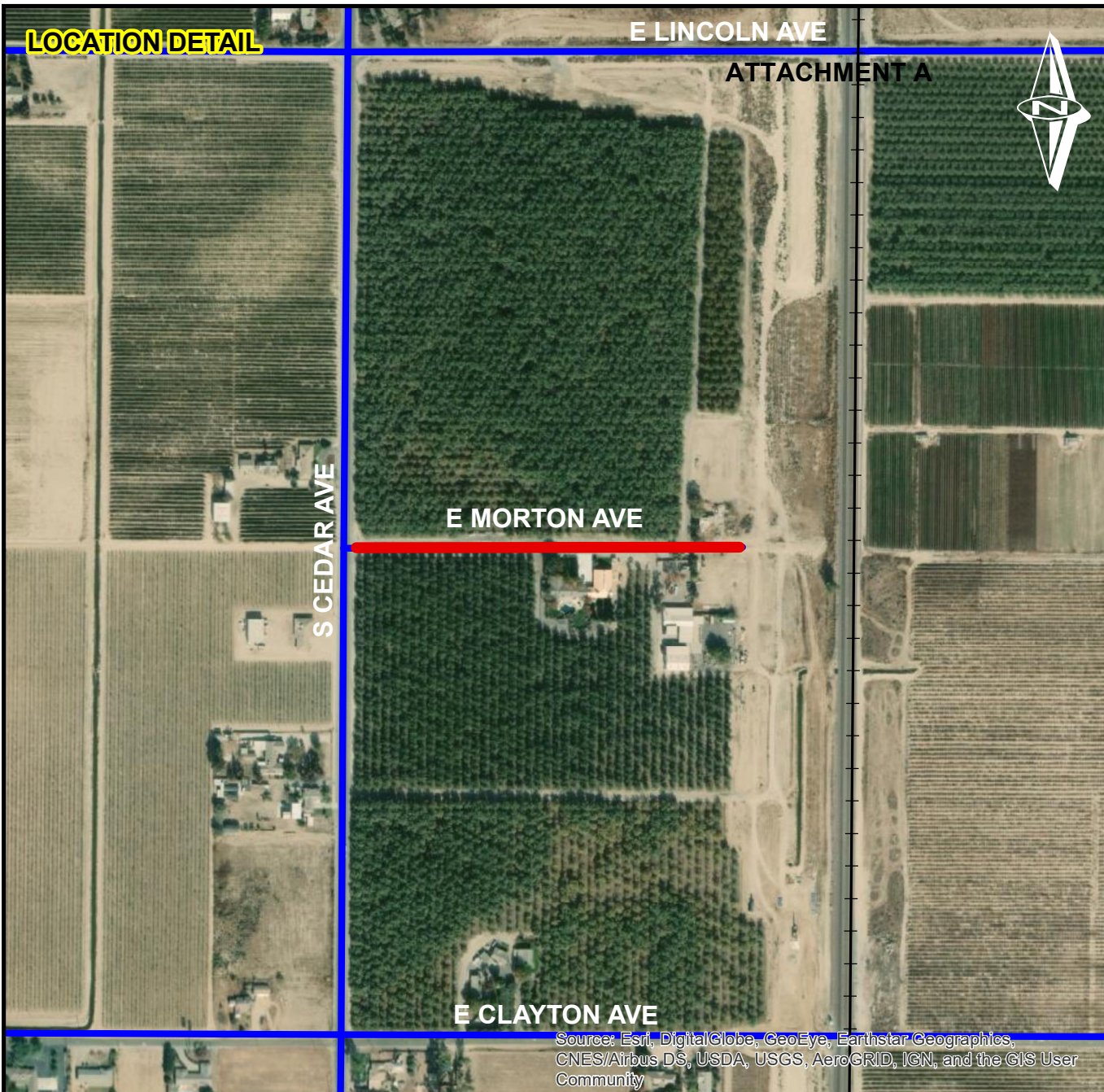
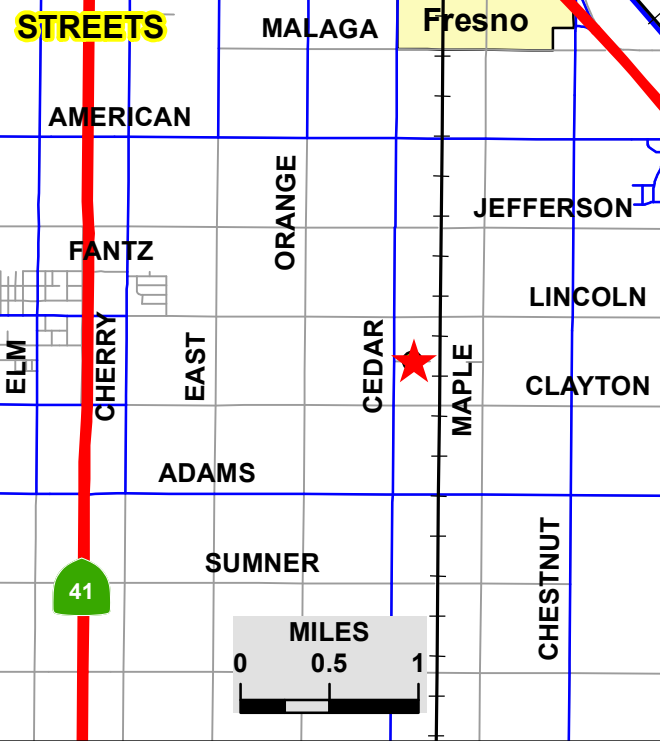


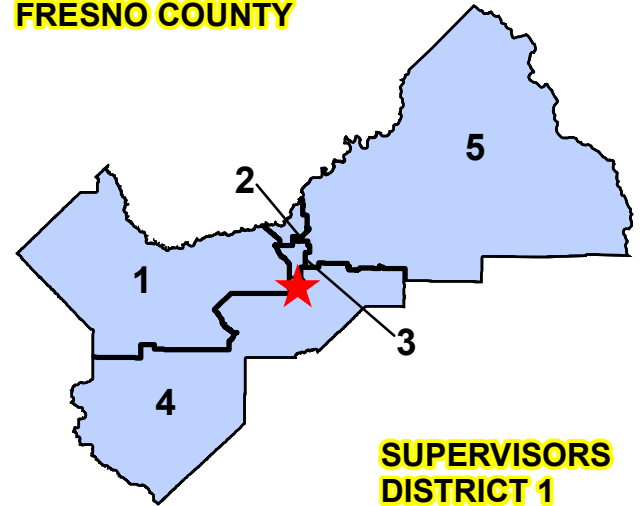
LOCATION DETAIL



Source: Esri, DigitalGlobe, GeoEye, Earthstar Geographics, CNES/Airbus DS, USDA, USGS, AeroGRID, IGN, and the GIS User Community



FRESNO COUNTY



SUPERVISORS DISTRICT 1

	DATE:	SCALE IN FEET
DESIGNED: C.M.	02/24/2021	
DRAWN: C.M.	02/24/2021	
STATE BRIDGE NO.	N/A	



DEPARTMENT OF PUBLIC WORKS & PLANNING

**MORTON AVENUE ROAD VACATION
SOUTH CEDAR AVE TO END OF MAINTAINED RD**