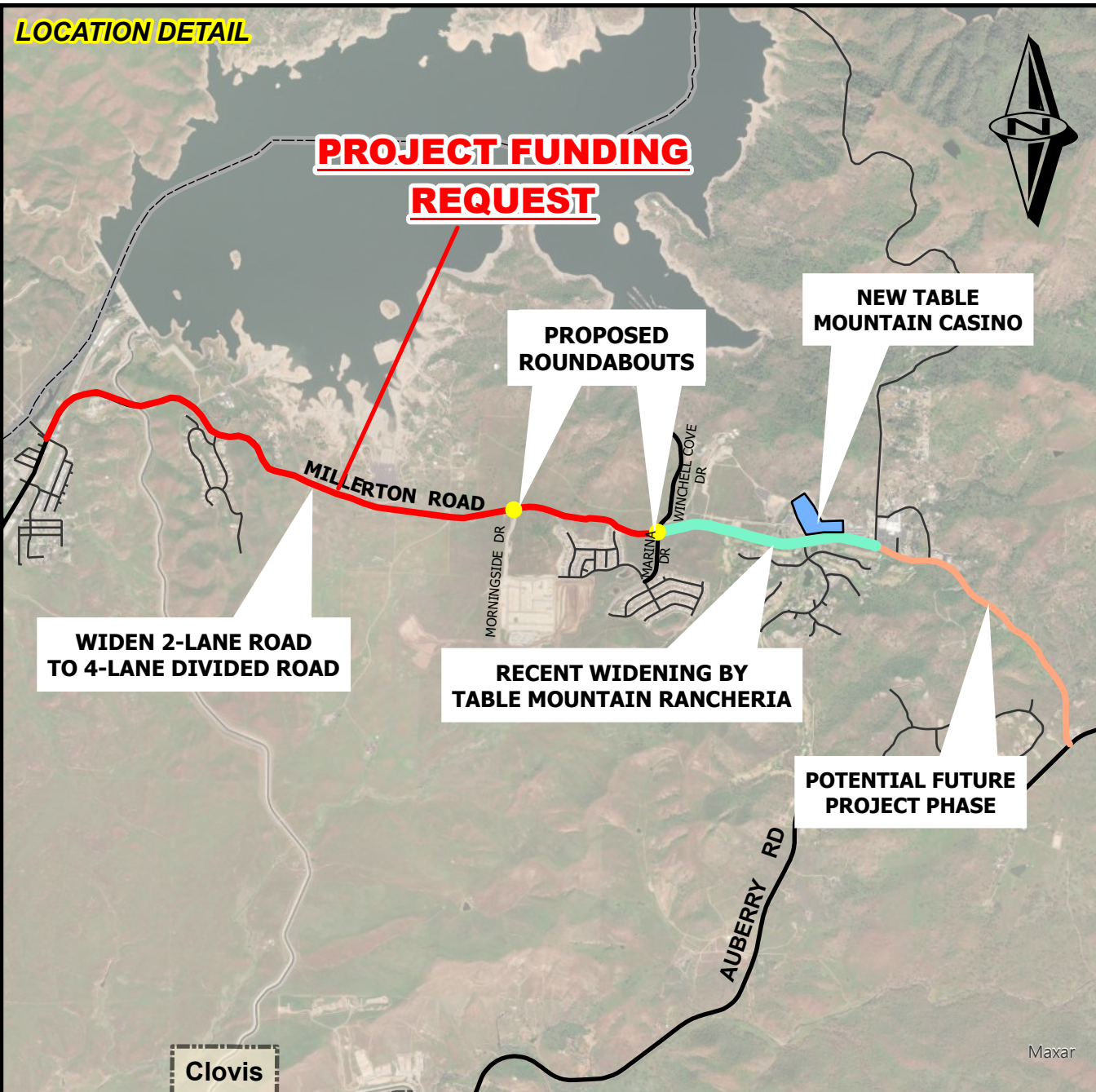


LOCATION DETAIL



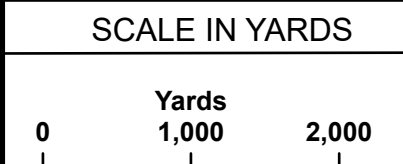
STREETS



FRESNO COUNTY



Prepared By: Diana Nuttman, Staff Analyst
 Date: 01/29/2025 (revised)
 Agency: County of Fresno
 Department: Public Works & Planning
 Division: Design



DEPARTMENT OF PUBLIC WORKS & PLANNING

**ATTACHMENT A
 MILLERTON ROAD WIDENING
 AND SAFETY IMPROVEMENTS**

2220 TULARE STREET, 6TH FLOOR, FRESNO, CA 93721
 Phone: (559) 600-4109 | Fax: (559) 600-4544